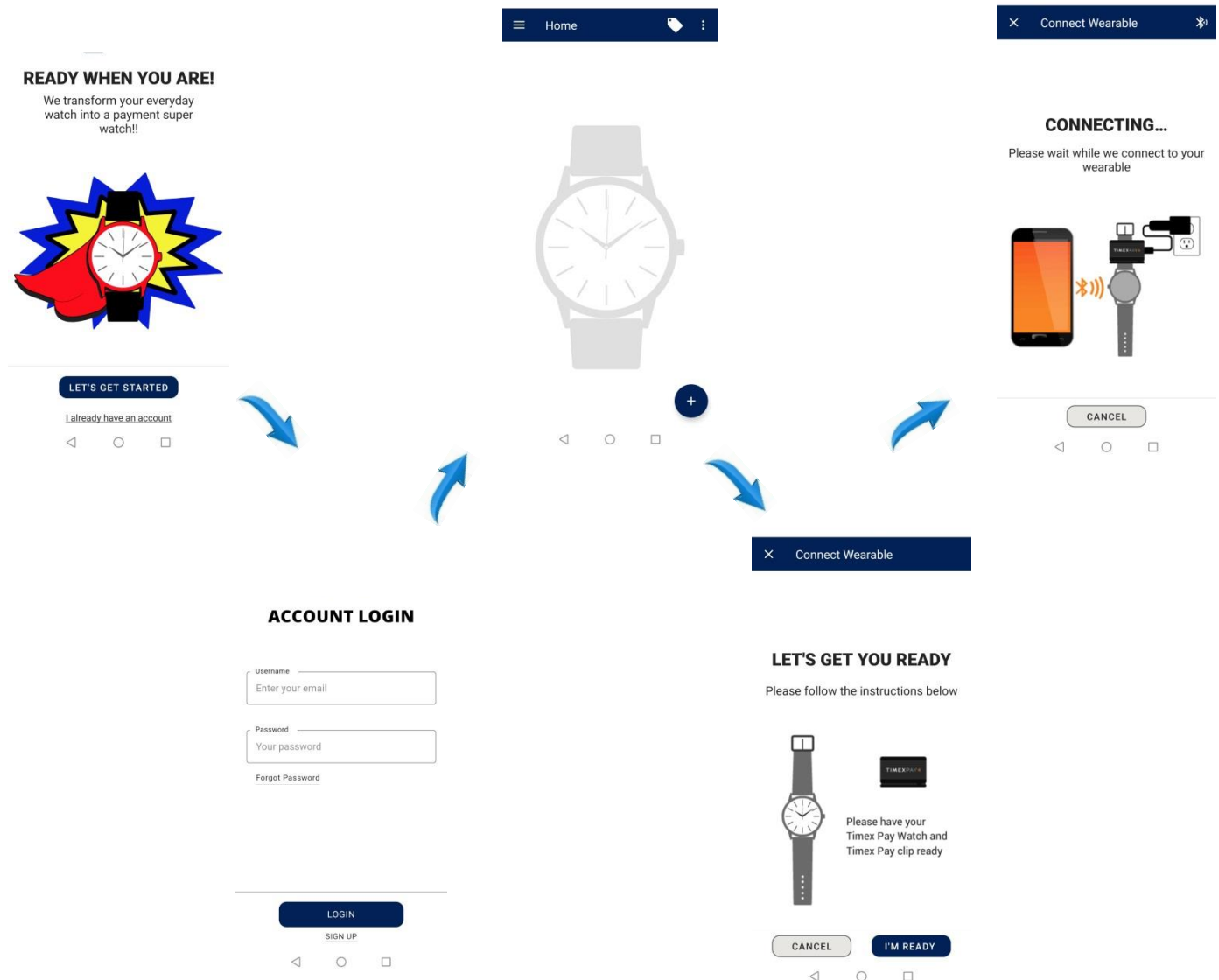


1. Download the “Tappy “ mobile application from Google Play / Apple Store and follow the on-screen instructions
2. Register a new account or login to your existing account using the registration/login screen on the mobile application
3. Connect Wearable
  - a. Attach the UPPU clip on the wearable carefully as depicted on the NFC indicator
  - b. Connect the UPPU to a USB power source with the cable included, ensure the light indicator is turned on
  - c. Add your wearable to your account by tapping (+) button on the home screen and press “Next” to proceed. The pairing will happen automatically if only one UPPU clip is visible within range.
  - d. You may be presented with a list of UPPU clips to select, if there are multiple clips visible within range. Match the Bluetooth name with the name on the sticker on the back of the Timex clip. If there is only one UPPU in the vicinity, the app will automatically pair with it
  - e. Once successful, you should see “Wearable Connected” with the picture of the wearable.
  - f. Please refer to FAQ for troubleshooting any issues.



#### 4. Add card

- a. Please ensure you have the wearable connected (Refer to section 3) before proceeding to add a card
- b. Tap on “Add a Card” on the bottom of the last screen
- c. Follow the instructions on the mobile application
- d. Once the card is added, you may be required to authenticate with your bank for security reasons to activate and use the wearable for contactless payments
- e. Please refer to FAQ for troubleshooting any issues.

#### 5. Delete card from wearable

- a. Please ensure you have the wearable connected (Refer to section 3)
- b. Navigate to: Settings -> Linked Credit Cards -> Select the card to delete by swiping through the carousel
- c. Tap on the 3-dot's in the top-right and choose the “Delete Card” option.
- d. Please refer to FAQ for troubleshooting any issues.

#### 6. Remove Wearable

- a. A wearable can be removed (Unpair) by navigating to home screen and tapping on the 3-dot's in the top-right. Then choose "Remove Wearable" option.
- b. A confirmation dialog will be displayed, and the user must select YES for the wearable to be removed.
- c. Please refer to FAQ for troubleshooting any issues.

#### 7. Pay with Wearable

- a. Please ensure you have added a card (Refer to section 4) to the wearable before proceeding to pay with your wearable
- b. It is as simple as bringing your wearable closer to, or tap on the POS terminal
- c. Please refer to FAQ for troubleshooting any issues.



Item	Description	Remark
LED indicator	Bluetooth connection indicator	1PCS · Green Blinks when not connected, always on after connection
Wireless communication	Bluetooth	2.4G
	RFID	13.56Mhz
Power consumption	Working current	90mA
	Stand-by current	40mA
	DC input	MICROUSB-5V
Working environment	Operating temperature	10°C-- 50°C
	Storage temperature	10°C--50°C
	Relative humidity	5% ~ 95%, no solidification
Switch machine	System boot method	Power-up default boot
Size(L x W x H)		34mm*30mm*13.7mm
Weight		13 g

## FCC compliance statement

This device complies with Part 15 of the FCC Rules. Operation is subject to the following two conditions: (1) this device may not cause harmful interference, and (2) this device must accept any interference received, including interference that may cause undesired operation.

changes or modifications not expressly approved by the party responsible for compliance could void the user's authority to operate the equipment.

This equipment has been tested and found to comply with the limits for a Class B digital device, pursuant to Part 15 of the FCC Rules. These limits are designed to provide reasonable protection against harmful interference in a residential installation. This equipment generates, uses and can radiate radio frequency energy and, if not installed and used in accordance with the instructions, may cause harmful interference to radio communications. However, there is no guarantee that interference will not occur in a particular installation.

If this equipment does cause harmful interference to radio or television reception, which can be determined by turning the equipment off and on, the user is encouraged to try to correct the interference by one or more of the following measures:

- Reorient or relocate the receiving antenna.
- Increase the separation between the equipment and receiver.
- Connect the equipment into an outlet on a circuit different from that to which the receiver is connected.
- Consult the dealer or an experienced radio/TV technician for help.

## ISED compliance statement

This device contains licence-exempt transmitter(s)/receiver(s) that comply with Innovation, Science and Economic Development Canada's licence-exempt RSS(s). Operation is subject to the following two conditions:

- (1) This device may not cause interference.
  - (2) This device must accept any interference, including interference that may cause undesired operation of the device.
- L'émetteur/récepteur exempt de licence contenu dans le présent appareil est conforme aux CNR d'Innovation, Sciences et Développement économique Canada applicables aux appareils radio exempts de licence. L'exploitation est autorisée aux deux conditions suivantes :

- (1) L'appareil ne doit pas produire de brouillage;
- (2) L'appareil doit accepter tout brouillage radioélectrique subi, même si le brouillage est susceptible d'en compromettre le fonctionnement.

## ISED Radiation Exposure statement

This equipment complies with IC RSS-102 radiation exposure limits set forth for an uncontrolled environment. Cet équipement est conforme aux limites d'exposition aux radiations IC CNR-102 établies pour un environnement non contrôlé.