
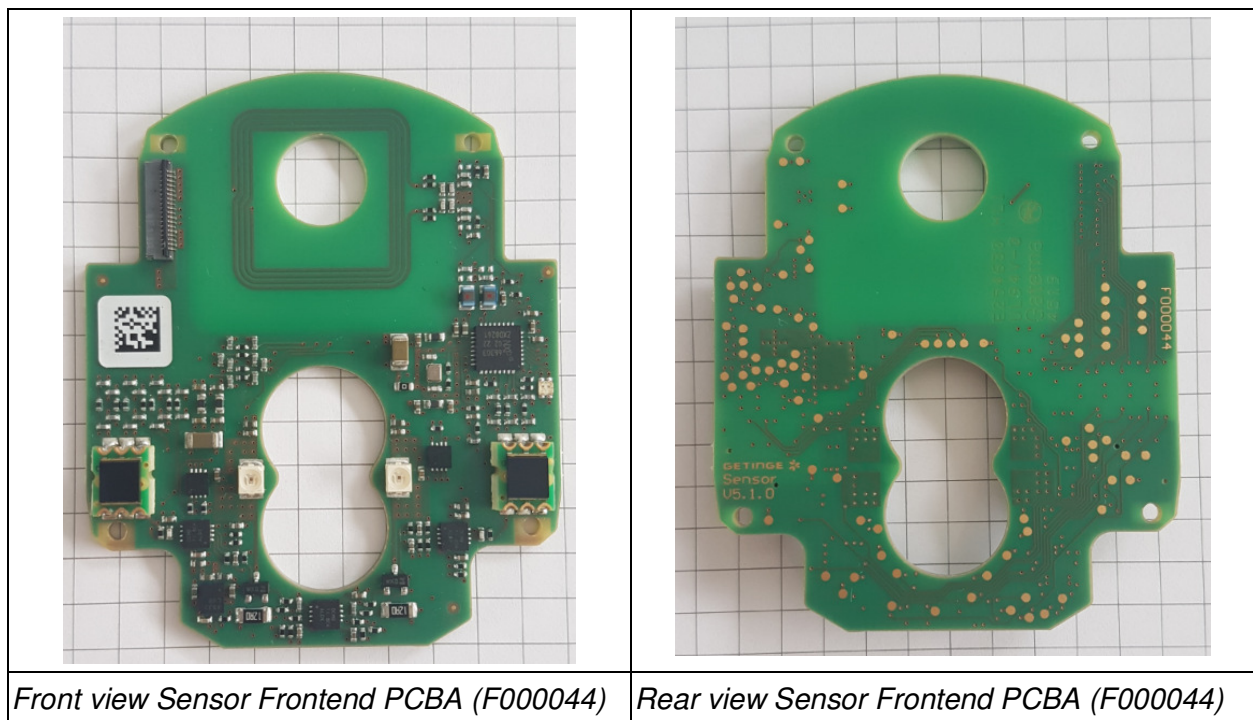


<b>Internal Photos of NICCI NFC Unit PCBAs</b>		<b>GETINGE</b>  <a href="http://www.getinge.com/">http://www.getinge.com/</a> Pulsion Medical Systems SE Hans-Riedl-Str. 21 85622 Feldkirchen Germany
Name of EUT: NICCI <i>NFC Unit</i> <ul style="list-style-type: none"> <li>• <i>Sensor Frontend PCBA (F000044)</i></li> <li>• <i>Controller PCBA (F000043)</i></li> </ul> <i>Here with NICCI Mouse Sensor, used for testing to bring EUT into operation.</i>	Author: G. Grichtmaier	
	Page: 1 of 2	
Version: V01_00	Date: 31.08.2020	

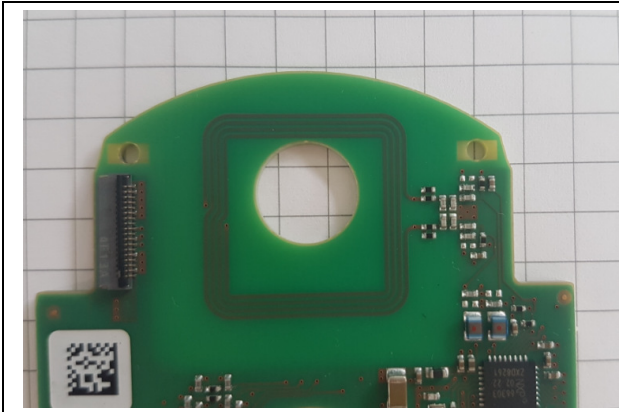
### Advance information

The NICCI *NFC Unit* consists of the *Sensor Frontend PCBA (F000044)* and of the *Controller PCBA (F000043)*.

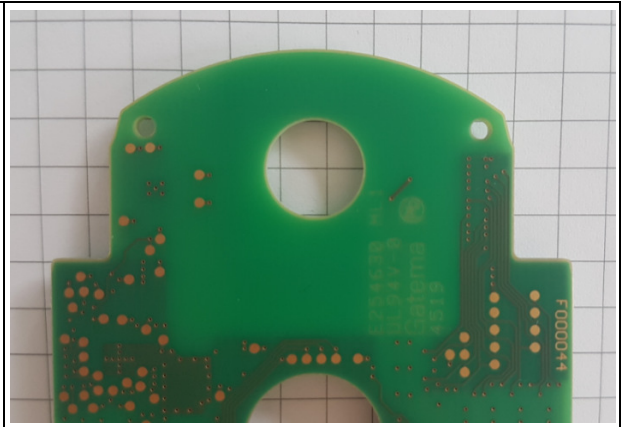
These parts are integrated in the NICCI Mouse Sensor.



**Figure 1: Sensor Frontend PCBA (F000044)**

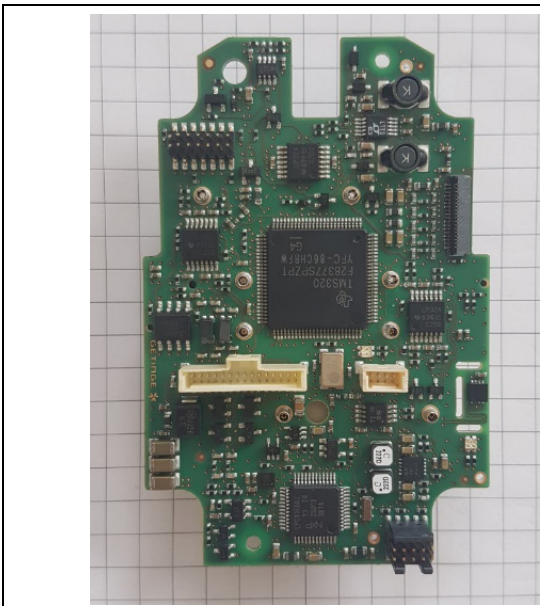


*Front view of Sensor Frontend PCBA with integral antenna*

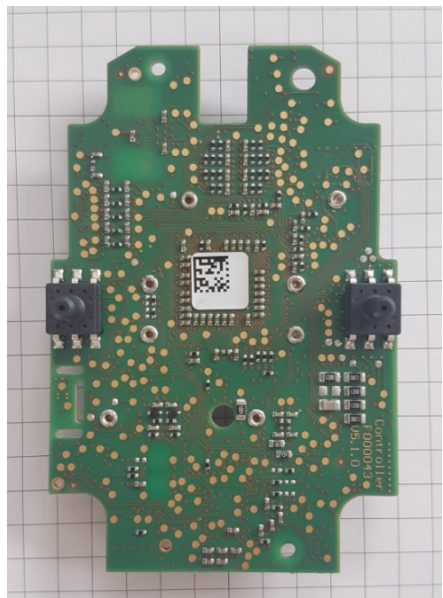


*Rear view of Sensor Frontend PCBA with integral antenna*

**Figure 2: Sensor Frontend PCBA (F000044) – Antenna**



*Front view of Controller PCBA (F000043)*

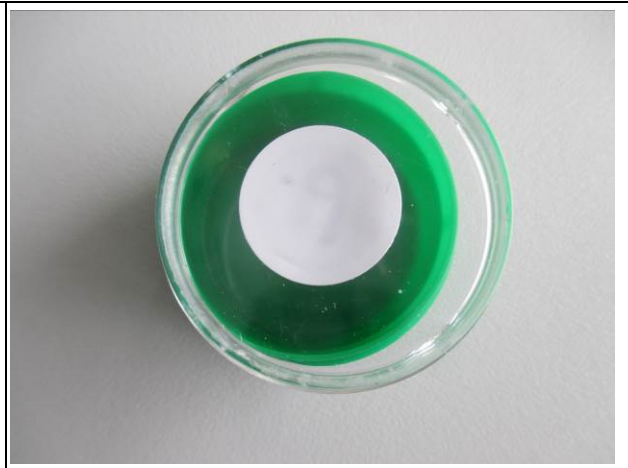


*Rear view of Controller PCBA (F000043)*

**Figure 3: Controller PCBA (F000043)**



*Front view of tag (ICODE DNA)*



*Rear view of tag (ICODE DNA)*

**Figure 4: Front view of NFC Tag, used together with the NICCI NFC Unit (EUT)**