

1 VERSIONING

Date	Author	Release	Company	Comment
27/06/2020	NEMES Gabor	0.1	Acrelec	Creation
17/11/2020	NEMES Gabor	0.2	Acrelec	Updated POE connection diagram Added connection diagram for 12V PSU

2 SCOPE OF THE DOCUMENT

The topic of this document is to provide instructions for installing the Drive ID inside the drive thru box.

3 PACKAGING

3.1 CONTENT OF THE PACKAGING / INSTALLATION KIT

1x HAROUTE0026	Drive ID	DRIVE ID GATEWAY
	POE injector	
	Fixation screws	
	3M fastener	
	Ethernet cable	

4 IMPORTANT MEASURES

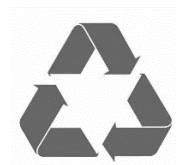
Handling of Drive ID:

 **DO NOT**



The Drive ID Box must not be moved if it is connected electrically.

 **DO**



All packaging must be recycled.



Unpack it in the presence of an Operations Manager.

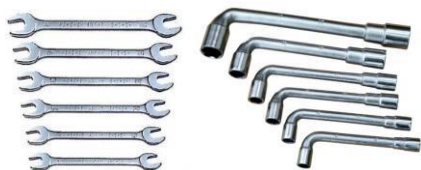
5 MEANS FOR INTERVENTION

5.1 NUMBER OF TECHNICIANS / NUMBER OF DAYS

At least 1 person, and about 30 min per Drive ID Box.

5.2 TOOLS NEEDED

If the device is installed outside of a speaker post or canopy



Spanner



Percussion + drill bit



Cutter



Level

5.3 TOOLS NEEDED

If the device is installed inside of a speaker post or canopy



Cutter

6 POSITION PRE-REQUISITES

- The device must be placed perpendicular to the Drive-Thru lane
- The front of the device must face the Drive Thru lane
- The device should be approximately 6ft away from the driver
- The device should be installed between 4.5 - 5.5 ft from the ground
- There should be no metal between the device and the driver

7 MOUNTING STEPS EXTERNAL INSTALLATION

7.1 WARNING / SAFETY

IMPORTANT: prior to any manipulation of the devices, shut off the main power supply at the main circuit breaker.

7.2 SUMMARY OF STEPS

If the speaker post enclosure or canopy is entirely made out of metal, the Drive ID device must be installed on the exterior of the stanchion. Follow the steps below:

STEP 1: Open the Speaker post /canopy

STEP 2: Drill 4 mounting holes

STEP 3: Drill hole for ethernet cable

STEP 4: Maintain device position

STEP 5: Fix and secure device

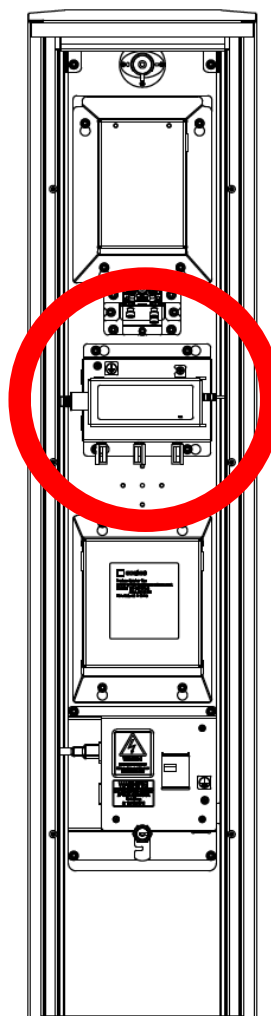
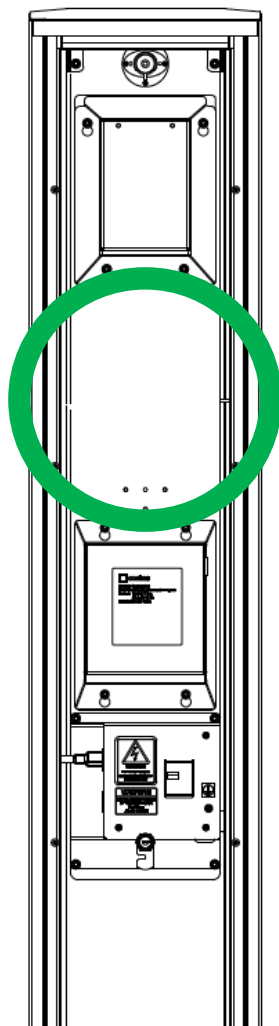
STEP 6: Connect cabling

STEP 7: Verify solution with the smart phone app

STEP 8: The installation is finished

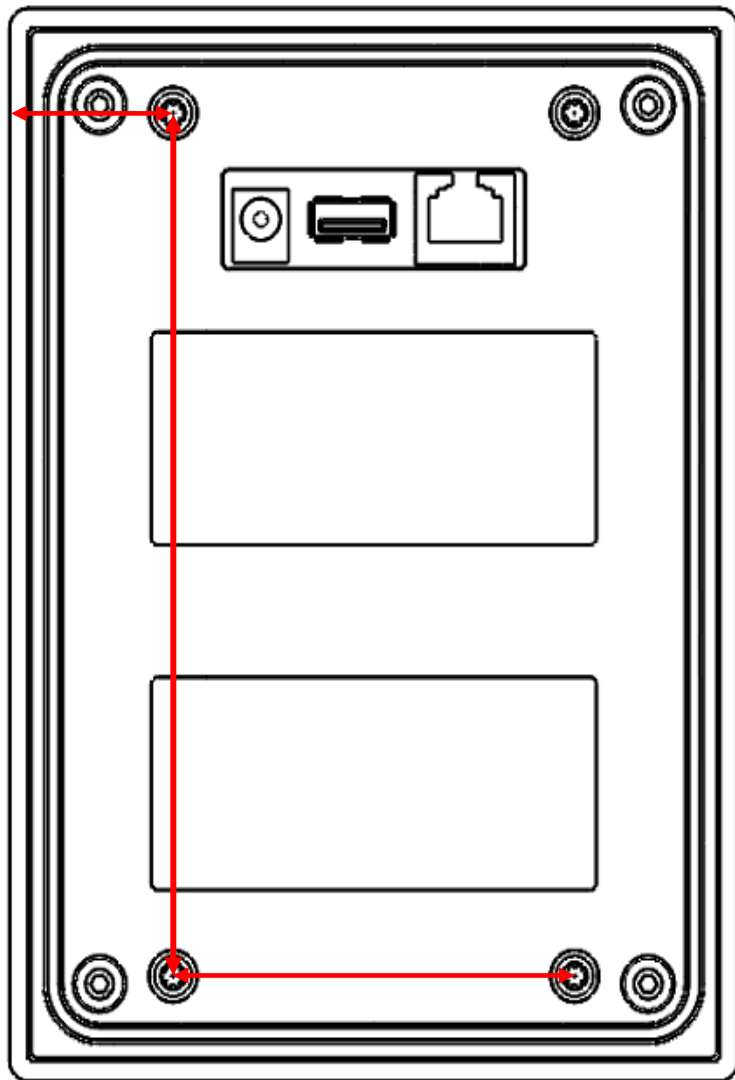
7.3 STEP 1 OPEN THE SPEAKER POST / CANOPY

Make sure that no existing components will be damaged. Ensure there's enough space to run the network cable, before start drilling.



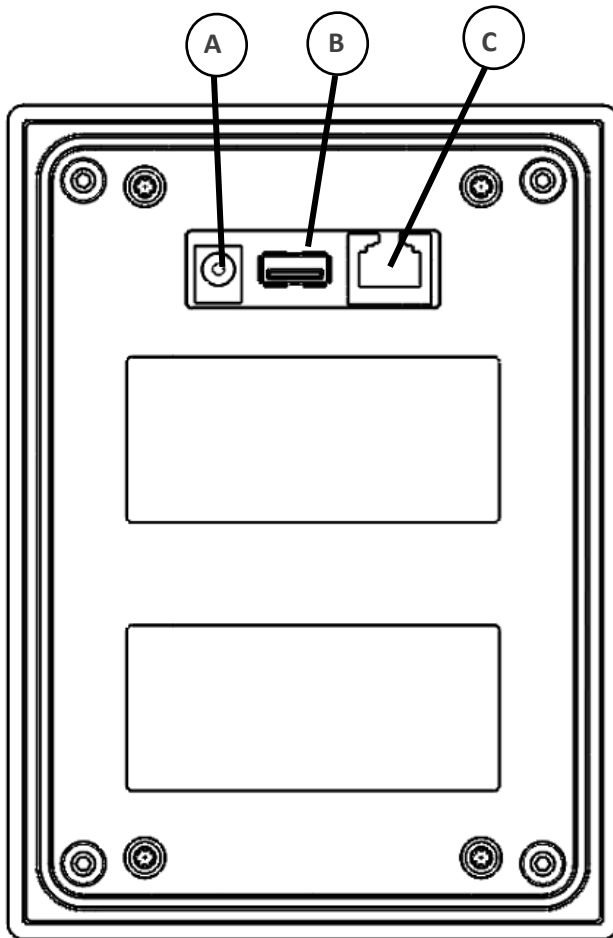
7.4 STEP 2 DRILL MOUNTING HOLES

To fix the device 4 mounting holes needs to be drilled on the enclosure.



7.5 STEP 3 DRILL HOLE FOR ETHERNET CABLE

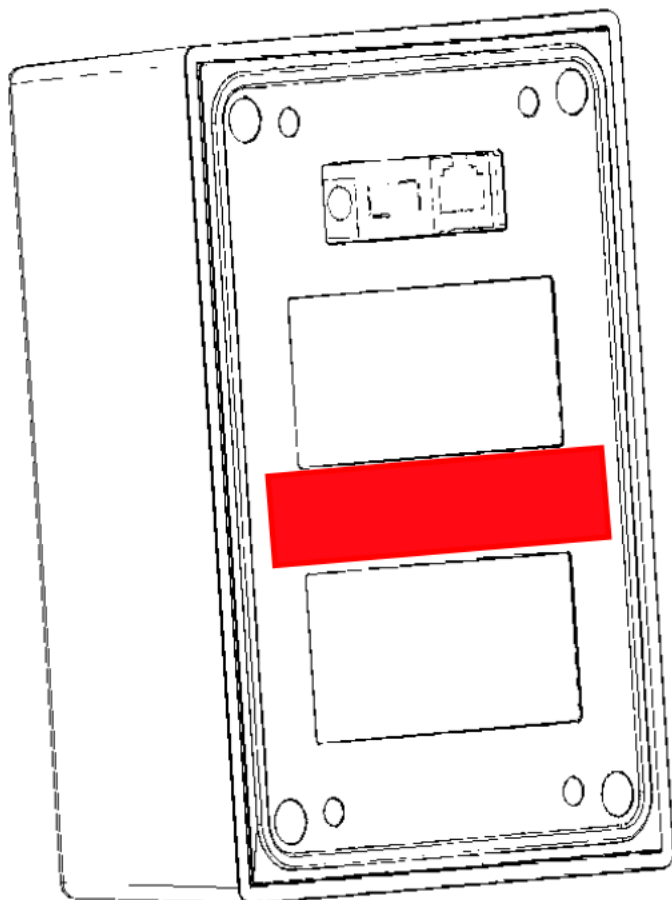
As the device is fixed on the exterior of the speaker post a hole needs to be drilled on the speaker post to connect to the restaurant network. The opening needs to have at least 15mm diameter to allow the RJ45 connector to pass through.



- A** Jack 12V DC: power connector. Connect the Drive ID Box to the 12V power supply inside the Drive Thru Box.
- B** USB connector: connect the scanner that is already used inside the Drive Thru Box.
- C** Network connector: use the spare network cable inside the Drive Thru Box to connect the Drive ID Box to the restaurant network.

7.6 STEP 4 TEMPORARILY FIX THE DEVICE WITH DOUBLE TAPE

To ease screwing of the device and to maintain proper position, apply double sided tape between the two sticker holders.



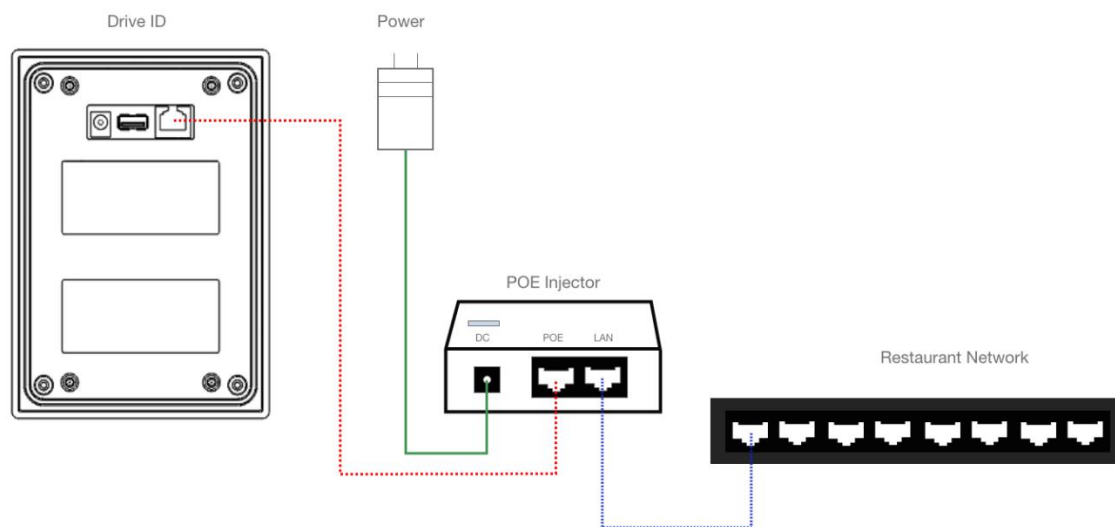
7.7 STEP 5 FIX AND SECURE DEVICE

Use attached self-tapping screws to fix device.

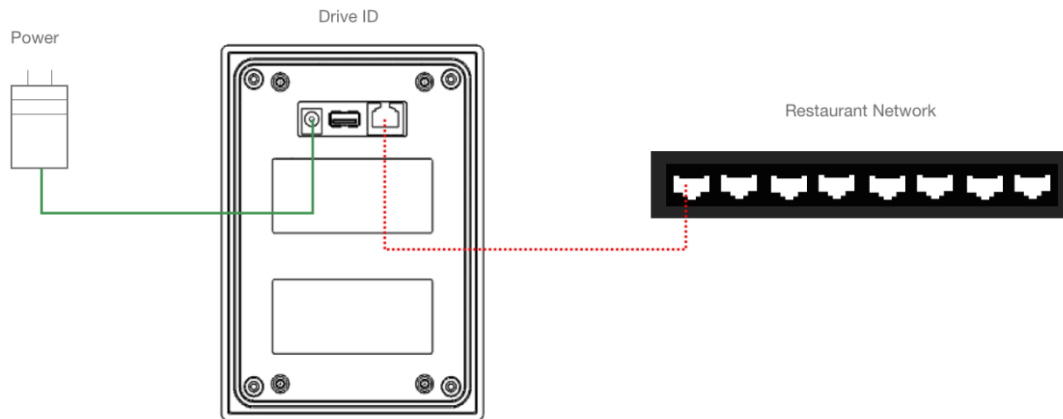
7.8 STEP 6 CONNECT CABLING

Once the device is fixed, connect the ethernet cable to RJ45 port on the back of the device. Follow below cabling diagram to ensure that the device is both powered and connected to the restaurant network.

Connection diagram – POE (Power Over Ethernet) injector



Connection diagram – 12V power supply

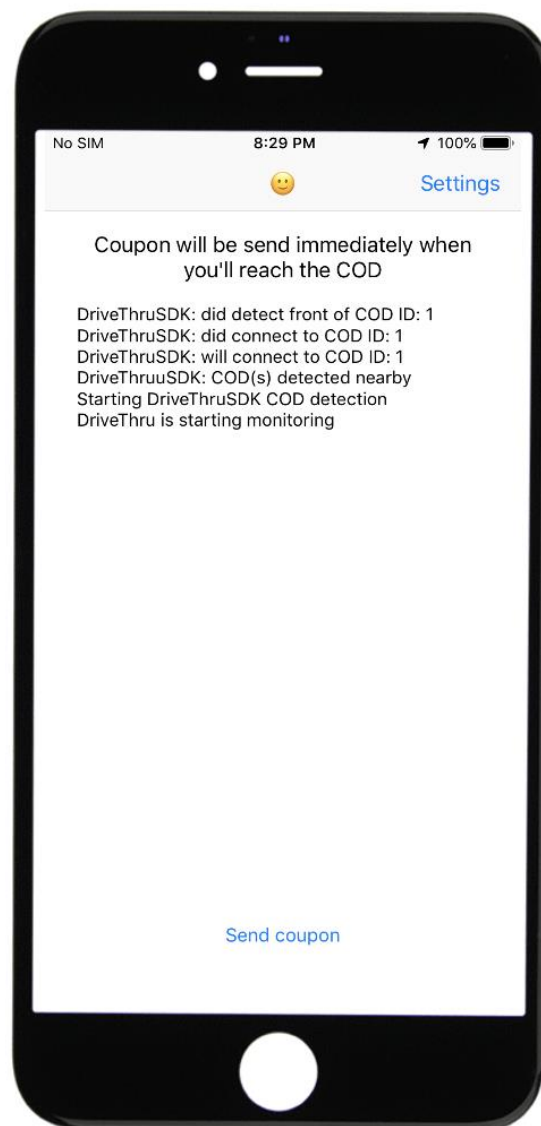


7.9 STEP 8 TEST DEVICE WITH SMARTPHONE APP

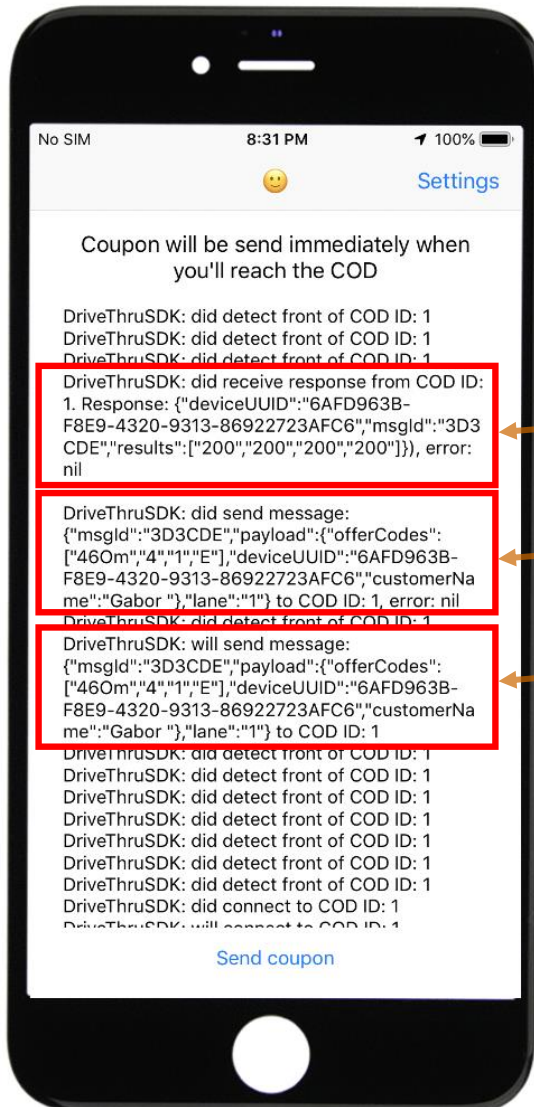
Once the device is installed test it with the smart phone application



Open the SBL–DriveThru-
POC application



When the app is opened
it automatically searches
for antennas



Confirmation of the message successfully received. No errors were detected.

Message sent with detailed information

Before sending the message

8 MOUNTING STEPS INTERNAL INSTALLATION

8.1 *WARNING / SAFETY*

IMPORTANT: prior to any manipulation of the devices, shut off the main power supply at the main circuit breaker.

8.2 *SUMMARY OF STEPS*

STEP 1: Open the Speaker post

STEP 2: Apply double tape

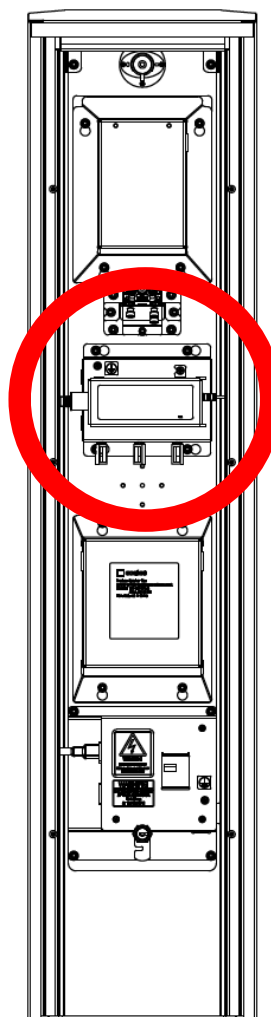
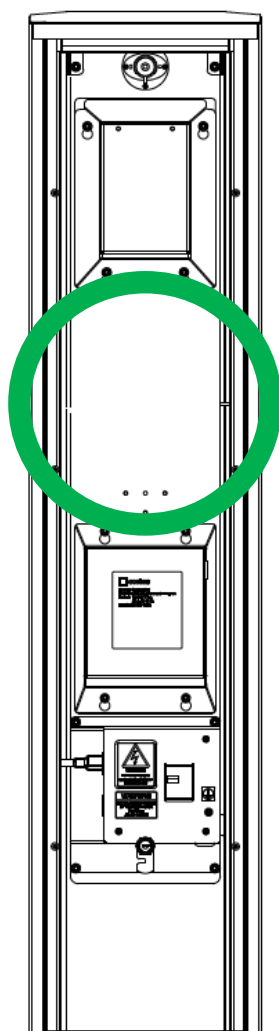
STEP 3: Fix and secure the device

STEP 4: Connect cabling

STEP 5: Verify solution with smart phone app

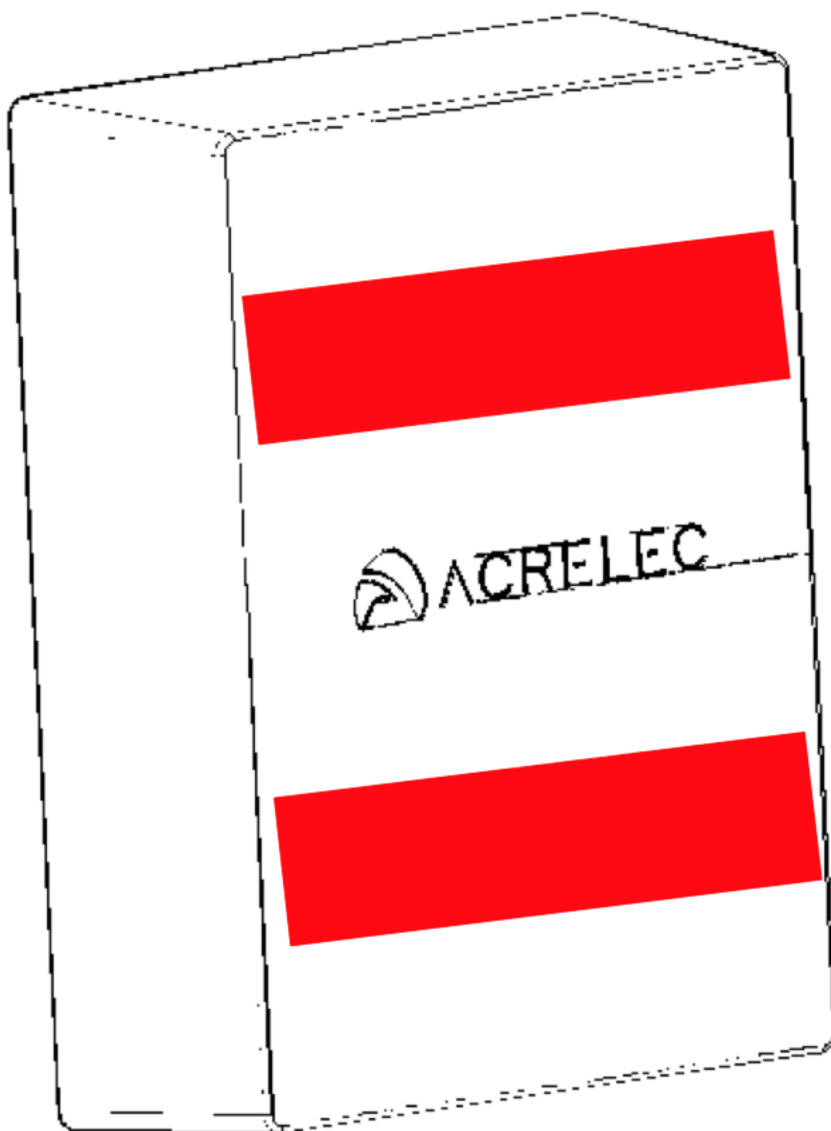
8.3 STEP 1 OPEN THE SPEAKER POST / CANOPY

Make sure there is enough room to install device inside. Pay attention to existing components.



8.4 STEP 2 APPLY DOUBLE SIDED TAPE

To fix the device put two stripes of double sided on the front of the device. Wipe the inside of the enclosure where the device will be affixed. There should be no dust/dirt between the tape and the enclosure.



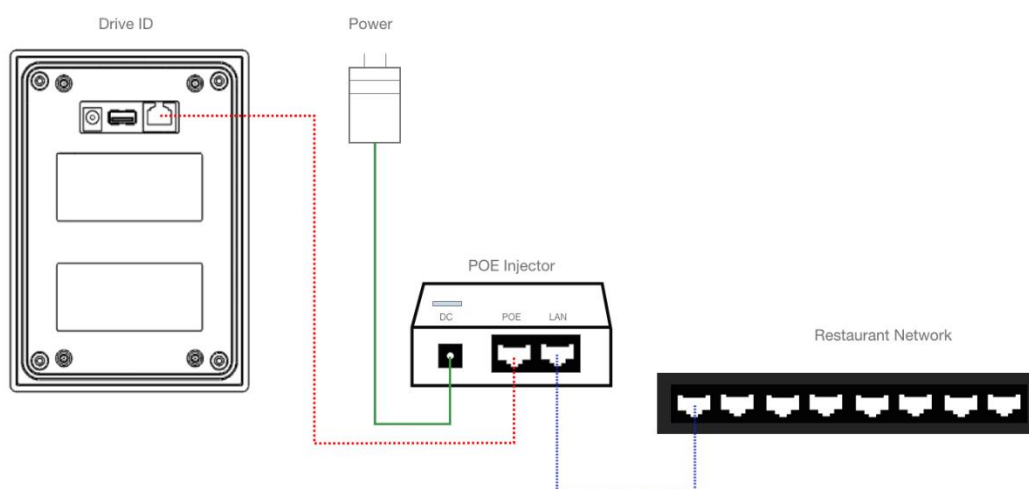
8.5 STEP3 ATTACH DEVICE

Once the surface is cleaned and tape is applied attach device to the enclosure. Press on both top and bottom of the back of enclosure for 30 seconds.

8.6 STEP 4 CONNECT CABLING

Once the device is fixed, connect the ethernet cable to RJ45 port on the back of the device. Follow below cabling diagram to ensure that the device is both powered and connected to the restaurant network.

Connection diagram

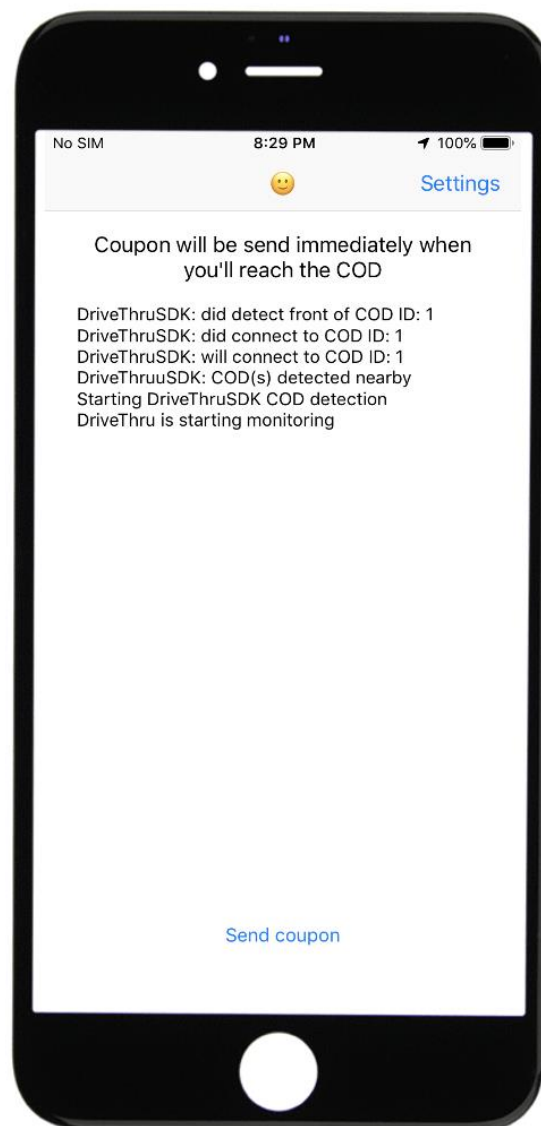


8.7 STEP 5 TEST DEVICE WITH SMARTPHONE APP

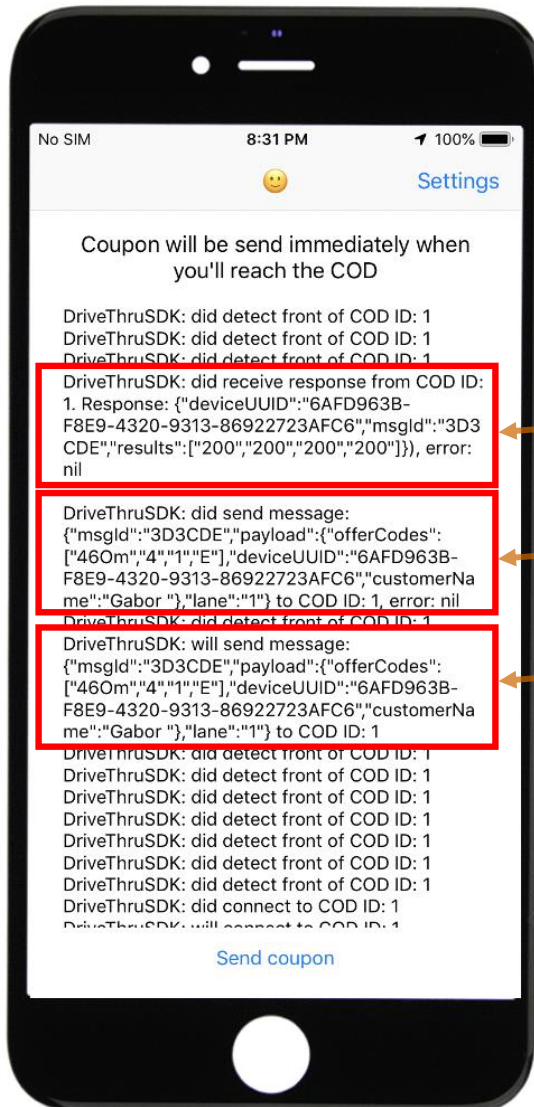
Once the device is installed test it with the smart phone application



Open the SBL–DriveThru-
POC application



When the app is opened
it automatically searches
for antennas



Confirmation of the message successfully received. No errors were detected. Message sent with detailed information

Before sending the message

9 COPYRIGHTS

© 2021, AKSOR – All rights reserved

No part of this publication may be reproduced, photocopied, stored on a retrieval system, or transmitted without the express prior written consent of the publisher.

Information in this document is subject to change without notice. AKSOR shall not be liable for errors contained herein.

AKSOR SAS
3 rue Louis de Broglie
77400 St-Thibault des Vignes
France

FCC Warning:

This equipment has been tested and found to comply with the limits for a Class B digital device, Pursuant to part 15 of the FCC Rules. These limits are designed to provide reasonable protection against harmful interference in a residential installation. This equipment generates, uses and can radiate radio frequency energy and, if not installed and used in accordance with the instructions, may cause harmful interference to radio communications. However, there is no guarantee that interference will not occur in a particular installation. If this equipment does cause harmful interference to radio or television reception, which can be determined by turning the equipment off and on, the user is encouraged to try to correct the interference by one or more of the following measures:

- Reorient or relocate the receiving antenna.
- Increase the separation between the equipment and receiver.
- Connect the equipment into an outlet on a circuit different from that to which the receiver is connected.
- Consult the dealer or an experienced radio/TV technician for help.

Caution: Any changes or modifications to this device not explicitly approved by manufacturer could void your authority to operate this equipment.

This device complies with part 15 of the FCC Rules. Operation is subject to the following two conditions: (1) This device may not cause harmful interference, and (2) this device must accept any interference received, including interference that may cause undesired operation.

This equipment complies with FCC radiation exposure limits set forth for an uncontrolled environment. This equipment should be installed and operated with minimum distance 20cm between the radiator and your body.

ISED Statement

- English: This device complies with Industry Canada license-exempt RSS standard(s). Operation is subject to the following two conditions: (1) This device may not cause interference, and (2) This device must accept any interference, including interference that may cause undesired operation of the device.

The digital apparatus complies with Canadian CAN ICES-3 (B)/NMB-3(B).

- French: Le présent appareil est conforme aux CNR d'Industrie Canada applicables aux appareils radio exempts de licence. L'exploitation est autorisée aux deux conditions suivantes: (1) l'appareil ne doit pas produire de brouillage, et (2) l'utilisateur de l'appareil doit accepter tout brouillage radioélectrique subi, même si le brouillage est susceptible d'en compromettre le fonctionnement. L'appareil numérique du CIEM conforme canadien peut - 3 (b) / nmb - 3 (b).

This device meets the exemption from the routine evaluation limits in section 2.5 of RSS 102 and compliance with RSS 102 RF exposure, users can obtain Canadian information on RF exposure and compliance.

Cet appareil est conforme à l'exemption des limites d'évaluation courante dans la section 2.5 du CNR - 102 et conformité avec RSS 102 de l'exposition aux RF, les utilisateurs peuvent obtenir des données canadiennes sur l'exposition aux champs RF et la conformité.

This equipment complies with Canada radiation exposure limits set forth for an uncontrolled environment.

This equipment should be installed and operated with minimum distance 20cm between the radiator & your body.

Cet équipement est conforme Canada limites d'exposition aux radiations dans un environnement non contrôlé.

Cet équipement doit être installé et utilisé à une distance minimale de 20 cm entre le radiateur et votre corps.