

148.5mm

안내 및 주의사항

제품 전원 공급 시 주의사항

1. 제품의 원활한 사용을 위해 QC 2.0 또는 QC 3.0 차량용 시가잭 사용을 권장해드립니다.

무선 충전 관련 안내 사항

1. 두께 3mm, 최대 5mm 이내의 보호 케이스 사용을 권장하고, 일부 케이스에 따라 무선충전이 제한될 수 있습니다.

2. 3단 발 조절을 활용하여, 스마트폰을 오그랩 발의 중앙에 맞춰주세요. (스마트폰 코일과 무선충전기 코일의 위치를 맞추면 충전 효율을 최대 20% 높일 수 있습니다.)

3. 무선 충전 미지원 스마트폰의 경우 2초간 경고음 또는 발동작 이상이 발생할 수 있는데, 그 경우는 아래의 경우와 같습니다.

- 무선 충전을 미지원하는 스마트폰
- 메탈 소재로 제작된 스마트폰
- 메탈 소재인 스마트폰 케이스

4. 차량 내부 온도가 높아질 경우 제품에 이상이 발생할 수 있습니다. 그 경우는 아래의 경우와 같습니다.

- 30°C 이상 : 충전 효율 감소
- 60°C 전후 : 무선 충전 중단
- 80°C 전후 : 오그랩 발 동작 중지

Guide and Caution

Power supply precautions

1. For smooth usage, we recommend using a QC 2.0 and QC 3.0 Cigar Jack.

Wireless charging guidelines

1. For phones with cases, cases with a thickness of 3mm to 5mm is recommended. For some cases the wireless charging function may be limited.

2. Use the three-way adjustments of the O-Grab Bal. Place the smartphone in the center of the O-Grab Bal cradle. (The right positioning of the phone can increase the charging efficiency by 20%)

3. For smartphones that do not support wireless charging, please note that a 2 seconds warning tone may occur or that the product may have functional abnormality. Abnormal functionality may occur in the following cases:

- Smartphones that do not support wireless charging
- Smartphones made out of metal
- Smartphone cases made out of metal

4. Please note that in case of high temperatures in the vehicle, the heat may cause the product to malfunction. Take caution in the following cases:

- Temperature above 30°C: decrease of charging Percentage
- Temperature approx. 60°C: interruption of wireless charging
- Temperature approx. 80°C: O-Grab Bal stops operating

O-Grab bal 제품 사용 설명서 입니다.
Fast Wireless Charger This is your product user manual.

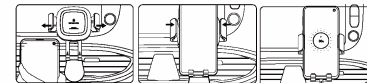
오그랩 발 무선 충전 거치대 장착 방법
O-Grab Bal wireless charging mounting manual

따로 조립 필요 없이 바로 무선 충전 거치대를 사용하세요.
The wireless charging mount can be used right away without any additional assembly.



1. 차량 송풍구에 오그랩 발을 끼워 넣습니다.
1. Insert/place the O-Grab Bal holding clip in the air vent of the vehicle.
2. 송풍구 거치대의 조임부를 돌려 송풍구에 단단하게 고정합니다.
2. Rotate the fastener on the clip to secure the grip in the air vent.
3. 케이블을 꽂으면 오그랩 발을 사용할 준비가 완료됩니다.
3. Plug in the cable and the O-Grab Bal is ready to use.

스마트폰 거치 방법 How to mount the smartphone

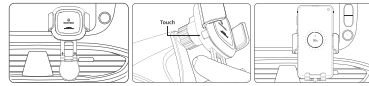


1. 홀더가 열려있는 오그랩 발 제품에 폰을 올려줍니다.
1. Place the smartphone in the mount when the holder is open.
2. FOD 센서가 스마트폰을 감지해 홀더가 자동으로 닫힙니다.
2. The FOD sensor will detect the smartphone and the holder then closes automatically.
3. 홀더가 닫히며 스마트폰이 거치되고 충전이 시작됩니다.
3. When the holder is closed the phone has been mounted and charging will start automatically.

105mm

148.5mm

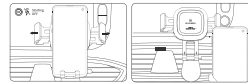
[오그랩 발 홀더가 닫혀있는 경우]
[In case the O-Grab Bal holder is closed]



1. 오그랩 발 제품 왼쪽 하단에 있는 터치센서를 눌러 홀더를 열어줍니다.
1. Press the touch sensor button on the left side of the mount in order to open the holder.
2. 스마트폰을 거치하여 충전을 시작합니다.
2. Mount the smartphone and it will start charging.

스마트폰 탈거 방법 How to demount the smartphone

[자동차 시동을 끄면 바로 전력이 차단되는 경우]
[In case the mount power turns off after the engine is turned off]



1. 자동차 시동을 끄면 바로 홀더가 열립니다.
1. The holder will open automatically as soon as the car engine is turned off.
2. 홀더가 열리면 스마트폰을 꺼냅니다.
2. When the holder opens please take out the smartphone.

[자동차 시동을 꺼도 전력이 남아있는 차량]
[In case the mount power is still on even when turning off the car engine]



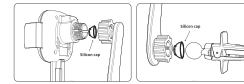
1. 오그랩 발 본체 좌측 하단에 있는 센서를 터치해줍니다.
1. Touch the sensor on the left side of the main body of the mount.
2. 홀더가 열리면 스마트폰을 꺼냅니다.
2. When the holder opens please take out the smartphone.

발 받침대 조절 안내 Guide to adjusting the O-Grab Bal cradle



1. 오그랩 발 받침대는 총 3단계로 조절이 가능합니다.
1. It is possible to adjust the O-Grab Bal cradle in three ways
2. 스마트폰이 제품의 중앙에 올 수 있도록 당기거나 밀어서 조절해주세요.
2. To center the smartphone in the cradle, please pull or slide the smartphone to the desired position.

실리콘 캡 위치 안내 Location of the silicone caps



1. 실리콘 캡은 본체와 에어업 연결부, 에어업과 송풍구 거치대 연결부 총 2곳에 위치해 있습니다.
1. The silicone caps are located in two places: At the connection between the main body of the mount and the Air-up, and the connection between the Air-Up and the air vent clip.

신지모루 고객센터 문의 1899-7390
신지모루 홈페이지 <http://www.sinjimoru.co.kr/>

105mm

FCC Information to User

This equipment has been tested and found to comply with the limits for a Class B digital device, pursuant to Part 15 of the FCC Rules. These limits are designed to provide reasonable protection against harmful interference in a residential installation. This equipment generates, uses and can radiate radio frequency energy and, if not installed and used in accordance with the instructions, may cause harmful interference to radio communications. However, there is no guarantee that interference will not occur in a particular installation. If this equipment does cause harmful interference to radio or television reception, which can be determined by turning the equipment off and on, the user is encouraged to try to correct the interference by one of the following measures:

- Reorient or relocate the receiving antenna.
- Increase the separation between the equipment and receiver.
- Connect the equipment into an outlet on a circuit different from that to which the receiver is connected.
- Consult the dealer or an experienced radio/TV technician for help.

Caution

Modifications not expressly approved by the party responsible for compliance could void the user's authority to operate the equipment.

FCC Compliance Information : This device complies with Part 15 of the FCC Rules. Operation is subject to the following two conditions: (1) This device may not cause harmful interference, and (2) this device must accept any interference received, including interference that may cause undesired operation.