

Federal Communications Commission
7435 Oakland Mills Road
Columbia MD 21046

Date: August 14, 2024
Subject: Requesting Class II permissive change for FCC ID: 2AVMJX6

To Whom It May Concern:

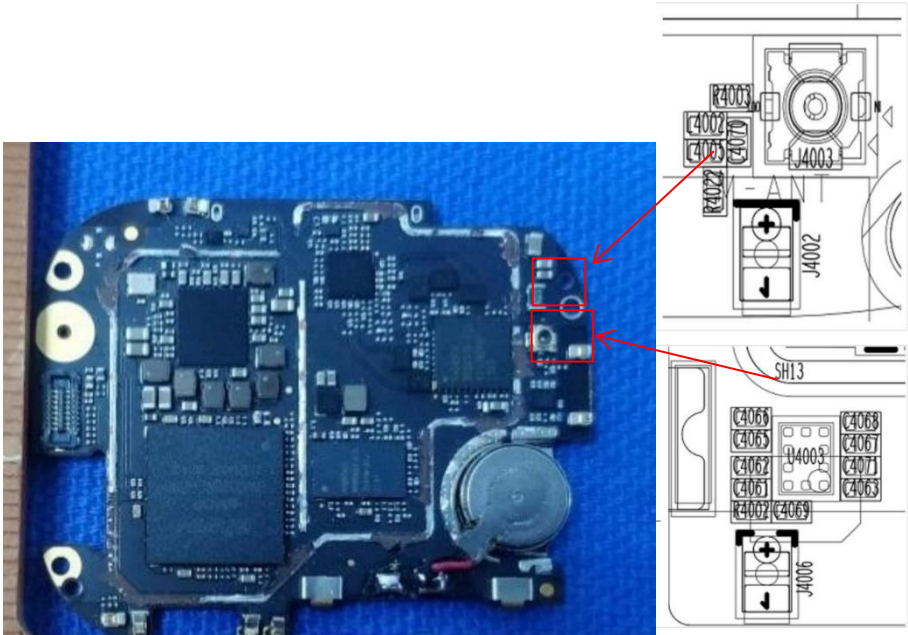
The purpose of this letter is to request a Class II Permissive change for FCC ID: 2AVMJX6, original granted on 10/18/2022.

Applicant: XPLORE Technologies AS

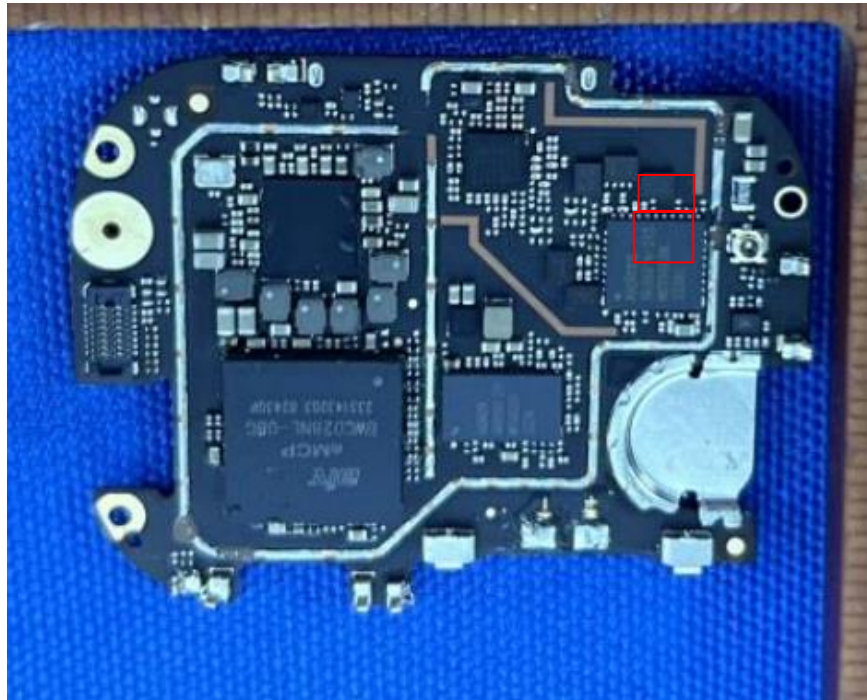
- A. DESCRIPTION OF PRODUCT CHANGES
- 1. Changed manufacturer for the capacitor (C4071, C4062);
 - 2. Changed manufacturer for the capacitor (R4002, R4003);
 - 3. Removed the inductor(L4005);
 - 4. More details as bellows;

Placement		Model	Parameter	Supplier	Remark
C4071	0 Ω	RC0201JR-070RL	RES-DISCRETE, 0201, 0ohm, +/-5%, 1/20W	Yageo	
		0201WMJ0000TEE	RES-DISCRETE, 0201, 0ohm, +/-5%, 1/20W	uniohm	new supplier
R4002	15NH	SDCL0603Q15NJT02B01	IND_RF, 0201, 15nH, 0. 85ohm, 0. 16A, +/-5%	Sunlord	
		SDCL0603Q15NJT02B03	IND_RF, 0201, 15nH, 0. 7ohm, 0. 25A, +/-3%	Sunlord	new supplier
C4062	22PF	V220J0201C0G500NAT	CAP-CERAMIC, 0201, C0G, 50V, 22pF, +/-5%	微容	
		C0201C0G220J500NTA	CAP-CERAMIC, 0201, C0G, 50V, 22pF, +/-5%	宇阳	new supplier
R4003	0 Ω	RC0201JR-070RL	RES-DISCRETE, 0201, 0ohm, +/-5%, 1/20W	Yageo	
		0201WMJ0000TEE	RES-DISCRETE, 0201, 0ohm, +/-5%, 1/20W	uniohm	new supplier
L4005	removed				

Original



New



B. PERFORMANCE DIFFERENCES

Description	Re-testing item	Remark
LTE ERP/EIRP/Radiated spurious emission	Need testing	Such LTE antenna (including antenna match circuit) change will affect LTE radiated section, Therefore, additional ERP/EIRP/Radiated spurious emission testing is necessary
SAR	Need testing	<p>a. Such LTE antenna (including antenna match circuit) change will affect LTE radiated section, so LTE SAR testing is necessary.</p> <p>b. Only LTE antenna (including antenna match circuit) change, WLAN/BT and the device appearance without any change, so WLAN/BT SAR testing is not necessary.</p>
External Photos	No need	No any change for appearance
Internal Photos	Provided	LTE antenna port (including antenna match circuit) change, provide new internal photos is necessary.
Test Setup Photos PCT	Provided	
SAR Test Setup Photos	Provided	
Schematic	Provided	LTE antenna port (including

		antenna match circuit) change, provide new internal photos is necessary.
Part List	Provided	LTE antenna port (including antenna match circuit) change, provide new internal photos is necessary.
User Manual	Provided	Update SAR values in User manual
Antenna Information	Provided	LTE antenna modify and provide revised is necessary.

C. CONCLUSION

This radio continues to meet all FCC standard requirements, including RF Exposure, thus this change does meet requirements a Class II Permissive Change.

Please contact me if you have any questions or need further information regarding this application.

Sincerely,



Name / Title: Sanghyo Kim / Director
Company: XPLOA Technologies AS
Address: Nedre Slottsgate 8 Oslo 0157 Norway
Phone: +44-7479553848
Fax: +44-2081236688
E-Mail: sanghyo.kim@xplora.com