

Kid Smart watch User Manual

AI voice by iFLY

Focus on Smart Kid's device, Follow Kid's demand, Care about children's Education, Ensure Children's safety

Please read the user manual carefully before using, so that you can install it correctly and use it quickly. The color of the product shall be subject to the actual product

Packaging accessories

Watch	1pcs	Charging cable	1pcs	Card	
User manual	1set	Screwdriver	1pcs	Protective film	

Specifications

Name: Kids Smartwatch

Battery: Lithium polymer 3.8V

Input charging: DC5V 1A

Working temperature: 0℃--35℃

Relative humidity: Non-condensing condition 5%--93%

1 Preparation before use

Check whether the model of the equipment is correct and whether the accessories are complete.

Select the nano SIM card of, 4G network, and refer to the opinions of dealers for details. (please POWER-OFF before installing the card)

The watch SIM card needs to activate GPRS function and call display function.

Install the app client on the mobile terminal. For details of the client, please ask your dealer

Barcode

2 Install nano SIM card

Select the nano SIM card of 2G \ 4G network. This card needs to open the call display, GPRS data for Internet and call function. Note that the SIM card should be installed and then turned on when the power is turned off to prevent the SIM card from being burned out.



3 Install SIM card

Install SIM card in power-off status



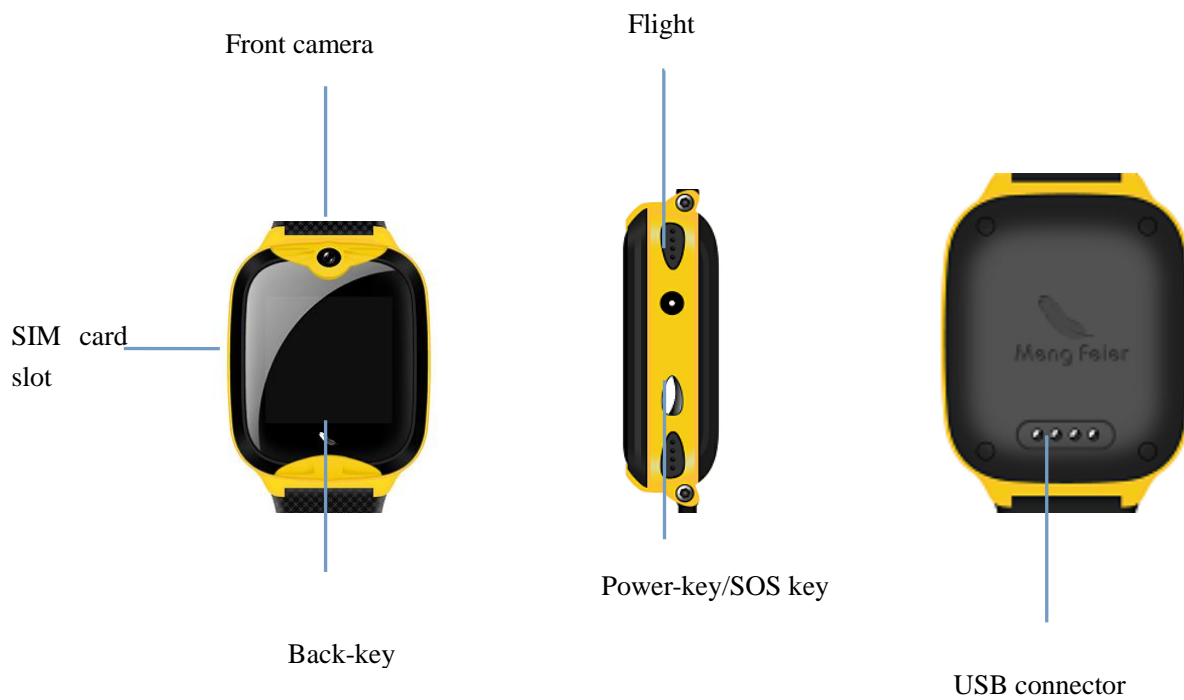
Note: remove the card plug to install the card. Avoid to water inside please tighten the screw on the card plug. Otherwise it will cause the watch to be unable to use normally

After installing the SIM card, press the figure above to install the SIM card trim in place, and then press and hold the power-key to start the phone.

4 Power-off

Power-off: the watch can only be remote to power-off through the app or enter the setting interface in the normal working state. If the watch is not installed with card or connected with app, you can enter the setting interface to power-off. Take care not to remove the SIM card directly when it is turned on to prevent the card from burning.

5 Watch information



Button operation instruction

Power-key: When the watch is off, Long time press and hold the power-key to power on

The watch is connected to Internet when it is turned on and the app has set the SOS number. Long press and cycle to dial three numbers. If there is no answer, cycle to dial twice.

Back key: short press to return to the previous interface

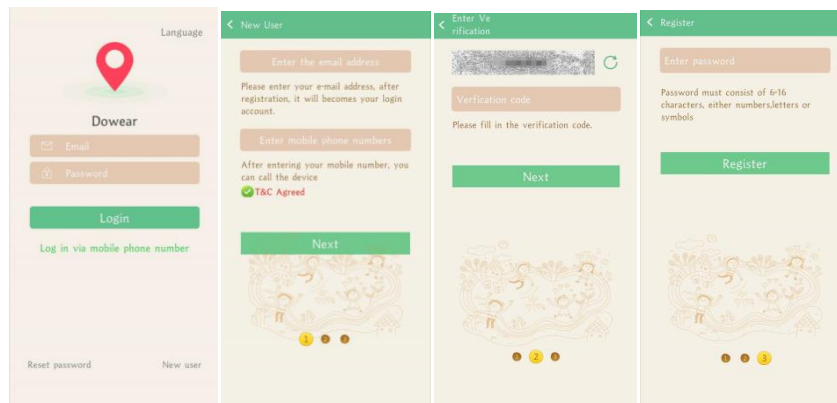
6 Download APP

6.1 Scan QR code to download watch app DOWEAR 2. App QR code can also be found in watch app download interface.



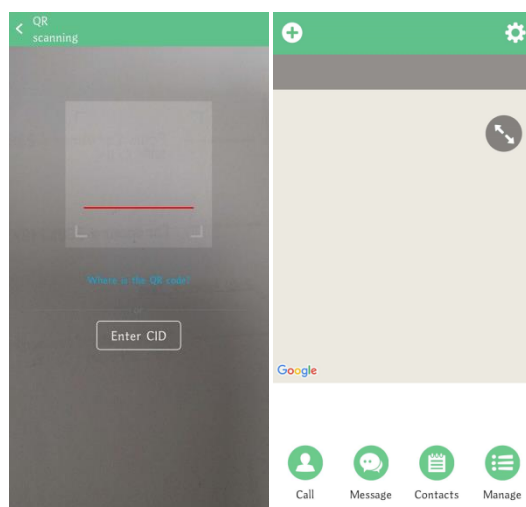
6.2 Register and Log-in

Create a Account and Log-in under the APP instruction



6.3 App account binding watch device

After the account registration is successful, bind the watch, scan the registration QR code pasted on the watch or manually input the 15 digit registration code. If the registration barcode pasted on the watch is lost, you can also find the registration code in the watch app download interface. Then go to binding settings.



7 Function Instruction

Base station, GPS, WiFi Positioning: view real-time location by App map

Weather forecast: watch can automatically update weather information

Footsteps: Record history tracks

Safety area: We can set three safety fences , and there will it will alarm when out of the fence.

Alarm: can set 3 alarm clocks

Phonebook: can set 15 contact phone numbers.

Chat: Click to chat with app, and send voice and picture to mobile phone. Note: the watch cannot send micro information to the mobile app, which can send micro information to the watch.

Camera: take photo/video/or turn-on camera automatically by open the back case.

Dialing: watch can dial independently, app can turn on or off this function

Video call: click in to select single chat or group chat to have video chat with app, and group chat can be up to 8 people together.

Gallery: Enter to review the photos taken by the watch. Photos can be shared, deleted and modified.

Settings: volume settings (media volume, alarm volume, ringing tone volume, call volume)

Brightness setting, sleep, restart, shutdown, device information (wireless upgrade, model, version number, IMEI)

Desktop style (single palace, four Palace), cleaning tools (cleaning background applications, cleaning cache)

More (Bluetooth, flashlight, mobile network, date and time settings, language).

Barcode

1. Scan code to download: Click to display QR code, scan code to download DOWEAR app.

2、CID code: confirm the register number

Early Education

1、Comment: click in and click "start" in the interface to start the game. The difficulty of the game is divided into three levels: simple, general and difficult. Click the setting button in the interface to set.

2、Pocket story: enter to listen to children's stories.

Touch to make friends: Click to enter the interface. Touch two watches to make friends. After making friends successfully, the picture will light up.

It can make four friends maximum. Click your friend's Avatar to chat with your friend, and send voice and pictures to your friend. Long press messages sent by friends to delete and delete all. Long press "friends picture" to delete friends.

and other third-party applications, which can be installed by issuing installation instructions on the app.

SOS: Set 3 emergency contact numbers. In case of emergency, the watch will press and hold the SOS key for 3 seconds, then it will give an alarm and call 3 numbers in a circle. When there is no answer, the cycle of dialing ends in two rounds.

Voice monitoring: through app settings, the watch actively dials the set number (generally the

parent number), and the mobile phone can realize one-way listening to the watch end

Non-disturbed time: three time periods can be set. The watch can block all phones and other sounds during the time period (valid from Monday to Friday).

SMS reminder setting: it can control whether the watch opens the SMS function of relevant alarm information (normal charging for SMS)

Family member: display all family member accounts which bound

Remote shutdown: the watch can be remote to power-off through app after it is turned on and working normally.

8 Troubleshooting

The watch cannot be connected to the server when it is turned on at the first time. The app sends an instruction to show that the device is not connected to the Internet. Please check:

1)Check SIM card is from mobile card, Unicom card or telecom card.

2)Check if it activate the internet data

3)The server parameters are IP and port. If the IMEI is correct, the IMEI barcode pasted on the watch must be consistent with the IMEI written by the watch factory.

If you don't understand, you can ask the agent.

5) There are two situations when registering: A. prompt that the equipment number does not exist or that the equipment number has been registered, and you must find an agent to handle it; B.

prompt that the account number has been registered, that is, the account number has been registered, and the customer only needs to change an account number to register again.

FCC Statement

This device complies with part 15 of the FCC rules. Operation is subject to the following two conditions: (1) this device may not cause harmful interference, and (2) this device must accept any interference received, including interference that may cause undesired operation.

Changes or modifications not expressly approved by the party responsible for compliance could void the user's authority to operate the equipment.

NOTE: This equipment has been tested and found to comply with the limits for a Class B digital device, pursuant to part 15 of the FCC Rules. These limits are designed to provide reasonable protection against harmful interference in a residential installation. This equipment generates uses and can radiate radio frequency energy and, if not installed and used in accordance with the instructions, may cause harmful interference to radio communications. However, there is no guarantee that interference will not occur in a particular installation. If this equipment does cause harmful interference to radio or television reception, which can be determined by turning the equipment off and on, the user is encouraged to try to correct the interference by one or more of the following measures:

- Reorient or relocate the receiving antenna.
- Increase the separation between the equipment and receiver.
- Connect the equipment into an outlet on a circuit different from that to which the receiver is connected.
- Consult the dealer or an experienced radio/TV technician for help.

Specific Absorption Rate (SAR) information:

This device meets the government's requirements for exposure to radio waves. The guidelines are based on standards that were developed by independent scientific organizations through periodic and thorough evaluation of scientific studies. The standards include a substantial safety margin designed to assure the safety of all persons regardless of age or health. FCC RF Exposure Information and Statement the SAR limit of USA (FCC) is 1.6 W/kg averaged over one gram of tissue. Device types: This device has also been tested against this SAR limit. This device was tested for typical body-worn operations with the back of the device kept 10mm from the body. To maintain compliance with FCC RF exposure requirements, use accessories that maintain an 10mm separation distance between the user's body and the back of the device. The use of belt clips, holsters and similar accessories should not contain metallic components in its assembly. The use of accessories that do not satisfy these requirements may not comply with FCC RF exposure requirements, and should be avoided.

IC Statement

- English:

This device complies with Industry Canada licence-exempt RSS standard(s).

Operation is subject to the following two conditions: (1) This device may not cause interference, and (2) This device must accept any interference, including interference that may cause undesired operation of the device.

The digital apparatus complies with Canadian CAN ICES-3 (B)/NMB-3(B).

- French:

Le présent appareil est conforme aux CNR d'Industrie Canada applicables aux appareils radio exempts de licence. L'exploitation est autorisée aux deux conditions suivantes:

(1) l'appareil ne doit pas produire de brouillage, et (2) l'utilisateur de l'appareil doit accepter tout brouillage radioélectrique subi, même si le brouillage est susceptible d'en compromettre le fonctionnement.

IC RF Exposure Information

This equipment complies with IC radiation exposure limits set forth for an uncontrolled

environment and meets RSS-102 of the IC radio frequency (RF) Exposure rules. This equipment

has very low levels of RF energy that are deemed to comply without testing of specific absorption ratio (SAR).

Cet équipement est conforme aux limites d'exposition aux rayonnements énoncées pour un environnement non contrôlé et respecte les règles d'exposition aux fréquences radioélectriques

(RF) CNR-102 de l'IC. Cet équipement émet une énergie RF très faible qui est considérée

conforme sans évaluation du débit d'absorption spécifique (DAS).