

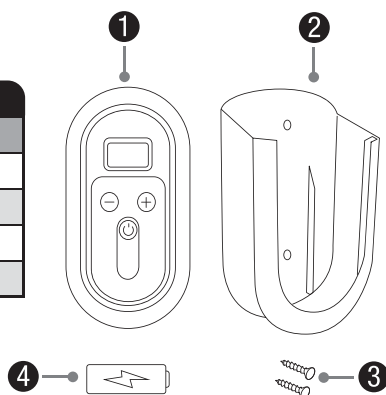
INSTALLATION INSTRUCTIONS



UNIVERSAL REMOTE FOR ADJUSTABLE FLOW PUMPS

Item #45041

Contents - #45041	
No.	Description
1.	Universal Remote
2.	Mounting Holster
3.	(2) Mounting Screws
4.	Battery (23A, 12V)



Instructions

INSTALLATION AND OPERATION

- Using a Phillips Head Screwdriver, remove the four screws on the back of the universal remote (Ex. 1).
- Remove the back cover from the remote and place the included battery in the battery compartment (Ex. 2).
- Replace back cover and re-install the four screws to secure.

NOTE: In order to control the flow of your Aquascape Adjustable Flow Pump without the use of a smartphone or tablet, you will need to pair the universal remote to your pump receiver.

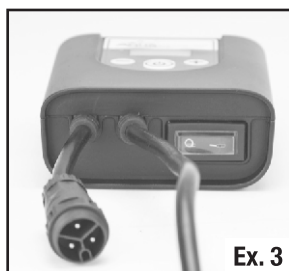
- The Smart Control Receiver includes a switch that allows the pump to be operated in the two following modes (Ex. 3).

☒ Position 1 – Operated by Universal Remote or Aquascape Smart Control App

☐ Position 2 – Bypass control and operate at full flow-rate

- Ensure that the receiver is set to Position 1 ☒ before beginning the pairing process (Ex. 3).
- Plug the Smart Control Receiver into an outdoor rated GFCI.

NOTE: If the receiver is plugged in and working, unplug the unit and plug it back into the outlet.



- Press and hold the “+” and “-” buttons simultaneously for more than 3 seconds (Ex. 4) to engage the pairing mode (indicated by flashing numbers on the display of the remote).

NOTE: Depending on whether you have a Smart Control Receiver (#45038) or Smart Control Receiver Large (#45039), you will need to select the proper number setting on the remote to continue pairing.

- Smart Control Receiver (#45038) – Set remote to “2”
- Smart Control Receiver Large (#45039) – Set remote to “1”

- Use the “+” and “-” buttons on the remote to select the proper number setting for your receiver
- After selecting the correct number on the remote, press the power button on the remote to complete pairing the remote to the receiver.

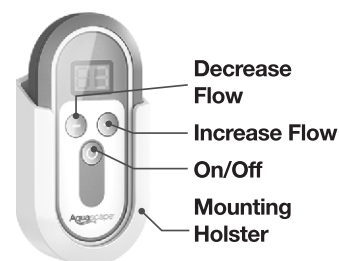
NOTE: Complete remote pairing process within 1 minute of connecting the receiver to the power source.

- The universal remote allows for flow adjustment between settings 1 and 10 and well as the ability to turn the pump on/off (Ex. 5).

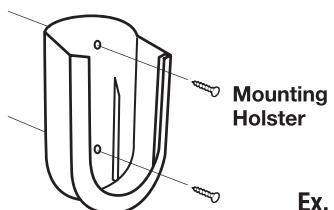
- For more control, including dynamic scheduling, connect the Smart Control Receiver to the Aquascape Smart Control App and control the pump from your smartphone or tablet (See Smart Control Receiver instructions for more information).

NOTE: The Universal Remote has an approximate range of 150 feet/45 meters. The range may be reduced if there are obstacles between the remote and receiver. To control your pump from anywhere, use the Aquascape Smart Control App.

- A mounting holster is included which provides a location to store the remote control. The holster includes an adhesive backing as well as two screws for quick and easy mounting (Ex. 6).
- Mount or store the remote in an area that is protected from the elements.



Ex. 5



Ex. 6

Troubleshooting

- Remote not controlling the receiver
 - Ensure the receiver switch is set to the correct position
 - Ensure remote battery is functioning
 - Re-pair the remote to the receiver

This device complies with part 15 of the FCC Rules. Operation is subject to the following two conditions: (1) This device may not cause harmful interference, and (2) this device must accept any interference received, including interference that may cause undesired operation.

Caution: Changes or modifications to this unit not expressly approved by the party responsible for compliance could void the user's authority to operate the equipment.

NOTE: This equipment has been tested and found to comply with the limits for a Class B digital device, pursuant to part 15 of the FCC Rules. These limits are designed to provide reasonable protection against harmful interference in a residential installation. This equipment generates, uses and can radiate radio frequency energy and, if not installed and used in accordance with the instructions, may cause harmful interference to radio communications. However, there is no guarantee that interference will not occur in a particular installation. If this equipment does cause harmful interference to radio or television reception, which can be determined by turning the equipment off and on, the user is encouraged to try to correct the interference by one or more of the following measures:

- Reorient or relocate the receiving antenna.
- Increase the separation between the equipment and receiver.
- Connect the equipment into an outlet on a circuit different from that to which the receiver is connected.
- Consult the dealer or an experienced radio/TV technician for help.

☐ MPE caution (for mobile device under Part 15.247 & 15.407 device)

To satisfy FCC RF exposure requirements, a separation distance of 20 cm or more should be maintained between the antenna of this device and persons during device operation.

To ensure compliance, operations at closer than this distance is not recommended

Guangdong Hailea Group Co., Ltd.

Factory Address: Hailea Industrial Zone, Hailea Road,
Raoping County, Guangdong Province, 515700, China
Tel: +86-768-8888888 Fax: +86-768-8883813
www.hailea.com E-mail: info@hailea.com

制造商: 广东海利集团有限公司

☛ 国家高新技术企业

☑ ISO9001 国际质量管理体系认证

☑ ISO14001 环境管理体系认证

☑ OHSAS18001 职业健康安全管理体系认证

Hailea Group Co., Ltd. Guangdong Oversea Sales Branch

24/F, East Tower, Twin City International Plaza, No.
263, Huasui Road, Zhujiang New Town, Guangzhou
City, Guangdong Province, 510623, China
Tel: +86-20-3837 2888 Fax: +86-20-3837 2791

企业标准号: Q/HL 04

工厂: 广东省饶平县海利路海利工业园

☎ 0768-8888888

销售热线: 0768-8885828 传真: 0768-8883813

E-mail: jungd@hailea.com

www.hailea.com