

无线收音麦克风

说明书

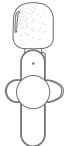


产品介绍

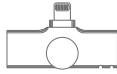
感谢您选择我们的产品。

本产品为智能无线麦克风，可提供专业级别的录音输出。即插即用，无需APP。多种用途：可实现网络直播、视频Vlog拍摄、节目访谈、采访录音、视频教学等场合的使用。

无线收音麦克风由两部分构成，麦克风发射端，lightning接收端。（如下图所示）

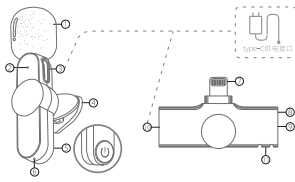


(麦克风发射端)



(lightning接收端)

ID图示



- 防风网
- 麦克风夹
- 手机lightning接口
- 接收端Type-C充电接口
- 挂绳孔
- 麦克风指示灯
- 开关机键
- 接收端指示灯
- 挂绳孔
- 麦克风Type-C充电接口
- 麦克风音量键
- 接收端复位键

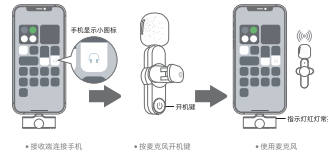
*麦克风内置电池，需要充电才能使用，lightning接收端手机充电（使用Type-C接口为手机充电接口）

使用方法

第一步：首先把接收端lightning一头接入手机的lightning接口，手机显示小图标表示连接成功。

第二步：单击麦克风的开机键，指示灯亮绿灯，即开机成功。

第三步：接收端红灯常亮，手机打开相机、直播视频等APP即可使用麦克风收音。



UI功能

麦克风发射端

功能/状态	操作	灯效
开机	长按开盖	绿灯亮
关机	短按开盖为	红灯闪烁
充电	Type-C充电	红灯常亮、快速红灯灭
充电指示		绿灯慢闪
配对成功		绿灯常亮
低电量警告	电量低于20%	红灯慢闪
复位	按一下复位键	绿灯慢闪

lightning接收端

功能/状态	操作	灯效
开机	插入设备充电	红灯亮
关机	拔掉设备充电	灯灭
充电指示		红灯慢闪
配对成功		红灯亮

包装清单

包装清单内容

- 1) 麦克风发射端
- 2) lightning接收端
- 3) Type-C充电线
- 4) 用户说明书
- 5) 收纳袋

合格证

检验员

本产品经检验合格

保修卡

产品编号: _____

检验员: _____

检验日期: _____

Wireless Microphone

User Manual

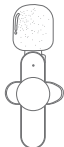


Introduction

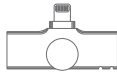
Thanks for choosing our product.

This product is a smart wireless microphone that provides professional-grade recording output. Plug and play, no app required. Multiple uses: It can be used in online live broadcast, video Vlog shooting, program interview, recording, video teaching and other occasions.

The wireless Microphone consists of two parts, one is Microphone transmitter, the other one is lightning receiver. (See as below picture)

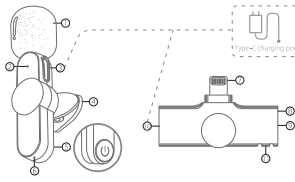


(Microphone transmitter)



(lightning receiver)

ID Diagram



- Windproof net
- Microphone clip
- lightning part to connect phone
- Type-C port of receiver
- Microphone indicator
- Switch key
- Receiver indicator
- Rope Hole
- Microphone Type-C charging port
- Microphone reset key
- Reset key of receiver

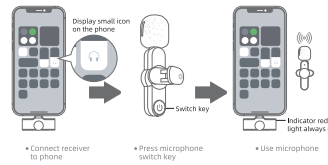
*The microphone is equipped with a built-in battery, which can be used only after being charged. The power of lightning receiver is supplied by phone. (@ Type-C port is for phone charging.)

How to use

Step 1: Connect the lightning receiver to phone with lightning port. The connection is successful if the phone displays a small icon.

Step 2: Press switch key of microphone, the indicator light turns green, and then power is turned on.

Step 3: The indicator red light of receiver keeps always on, then open the phone camera, live App or other Apps, and then to use the microphone to receive sound.



About UI

Microphone Transmitter

Function	How to use	Light
Power on	Press switch key once	Green light on
Power off	Press switch key about 2 seconds	Green light on for 1 second and light off when fully charged
Charging	Charging with Type-C cable	Red light flashes when charging and light off when fully charged
Pairing		Green light flashes slowly
Paired		Green light keeps on
Low battery alarm	Battery is below 20%	Blue light flashes slowly
Reset	Press reset key once	Blue light flashes slowly

lightning Receiver

Function	How to use	Light
Power on	Plug in the device	Red light on
Power off	Plug off the device	Light off
Pairing		Red light flashes slowly
Paired		Red light on

Packing List

Content of packing

- 1) Microphone transmitter
- 2) lightning receiver
- 3) Type-C charging cable
- 4) User manual
- 5) Storage bag

Model No.: EP033-Lighting
FCC ID: 2AVLI-LIGHTING



FCC Requirement

changes or modifications not expressly approved by the party responsible for compliance could void the user's authority to operate the equipment.

This device complies with Part 15 of the FCC Rules. Operation is subject to the following two conditions:

- (1) this device may not cause harmful interference, and
- (2) this device must accept any interference received, including interference that may cause undesired operation.

Note: This equipment has been tested and found to comply with the limits for a Class B digital device, pursuant to Part 15 of the FCC Rules. These limits are designed to provide reasonable protection against harmful interference in a residential installation. This equipment generates, uses, and can radiate radio frequency energy, and if not installed and used in accordance with the instructions, may cause harmful interference to radio communications. However, there is no guarantee that interference will not occur in a particular installation. If this equipment does cause harmful interference to radio or television reception, which can be determined by turning the equipment off and on, the user is encouraged to try to correct the interference by one or more of the following measures:

- Reorient or relocate the receiving antenna.
- Increase the separation between the equipment and receiver.
- Connect the equipment into an outlet on a circuit different from that to which the receiver is connected.
- Consult the dealer or an experienced radio/TV technician for help.