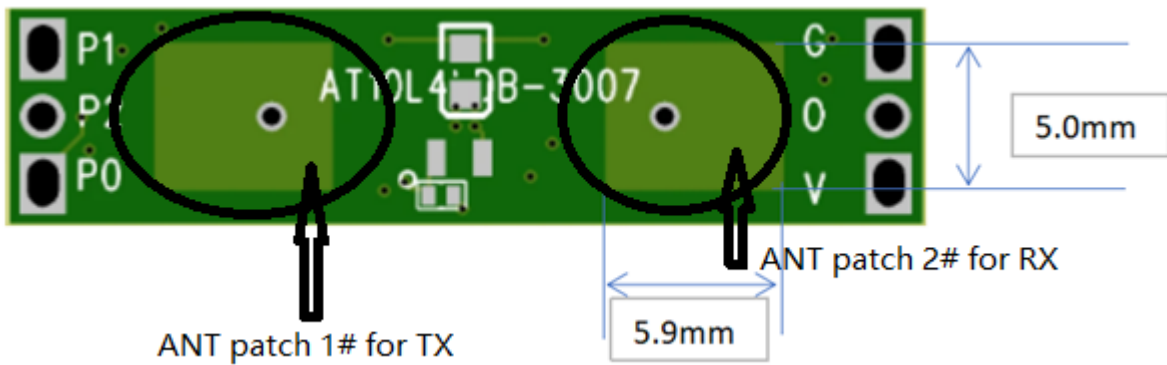
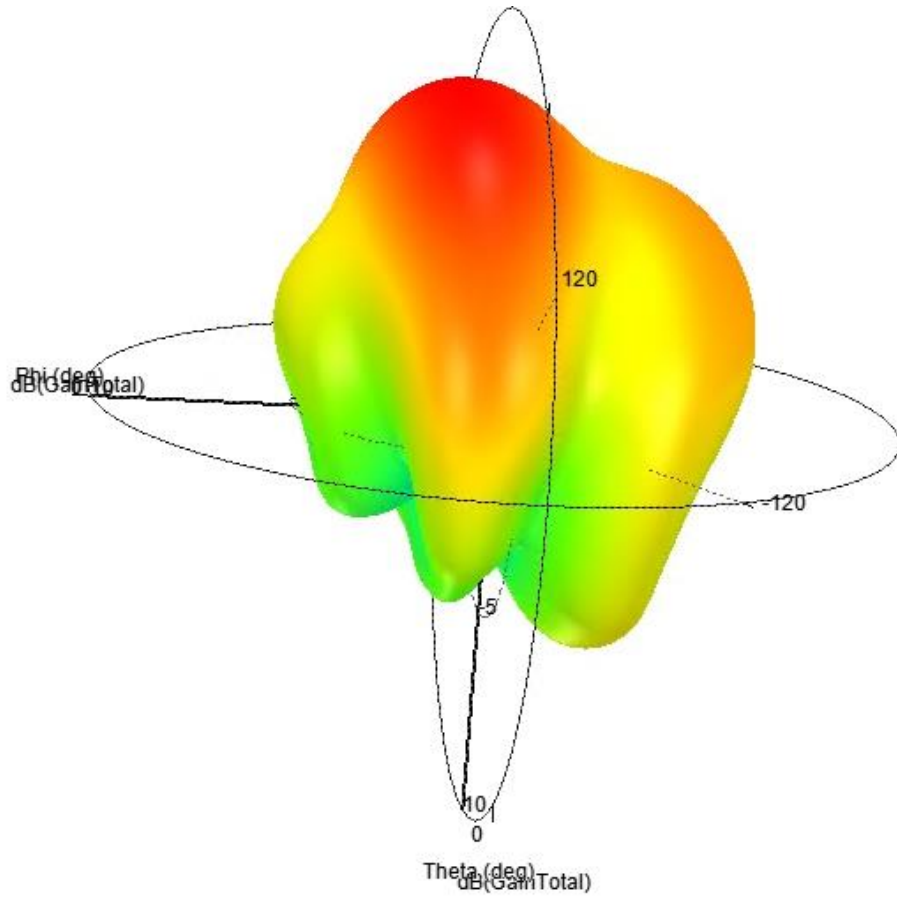
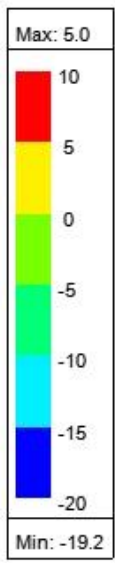


## Antenna Specifications

Design Specifications	Typical
Antenna Type*	Patch
Working Frequency	10.525 GHz
Antenna Gain	≤ 5 dBi (Max. ANT gain: 5dBi)
Antenna Efficiency	≥ 52%
VSWR	≤ 1.7
Impedance	50 ohm
Overall Dimensions*	5.9mm*5mm



ANT patch 1# and ANT patch 2#, having the same size, make up the antenna system of EUT. Refer to above table and picture for the dimensions of antenna of EUT.



3D antenna gain