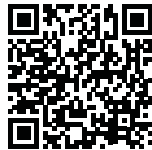


For more information about our Smart WiFi Light Bulbs and to access our user guides please visit:



feit.com/ LED LAMP

Alexa and all related logos are trademarks of Amazon.com, Inc. or its affiliates.

©2018 Google LLC All rights reserved. Google Assistant, Google Play, Google and their respective logos are registered trademarks of Google LLC.

App Store is a service mark of Apple Inc.

## LED LAMP

### Installation Guide

#### 1 DOWNLOAD AND INSTALL THE FEIT ELECTRIC APP

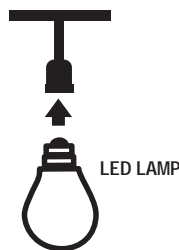
- Search for the Feit Electric App in the App Store or Google Play Store.
- Download and install the Feit Electric App on your smart device.
- Setup an account or login to your existing account



#### 2 INSTALL YOUR LIGHT BULB

- Install your light bulb(s) into a socket

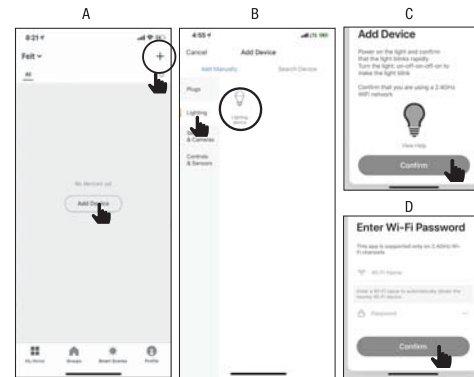
NOTE: Constant power to the bulb(s) is required at all times



#### 3 ADDING YOUR SMART WI-FI BULB USING THE FEIT ELECTRIC APP

- Tap **+** in the upper right corner. Note: if this is the first device you are setting up you can also select Add Device (A).
- Tap **Lighting** and select **Lighting device** (B).
- Power On the bulb(s) and confirm the bulb(s) is blinking. Then tap **Confirm** (C).
- You will be prompted to confirm your WiFi network and enter password. Then tap **Confirm** (D).

Be sure to connect to a 2.4 GHz WiFi network that covers your installation location.



NOTE: If the bulb(s) is not blinking, turn the bulb(s) ON-OFF-ON-OFF-ON.

#### 4 STATUS MENU

- The status menu will appear. Wait until it's completed.

NOTE: If unsuccessful, the "Failed to Add" screen will appear. Close the app and repeat the previous steps. If successful, continue to step 5.



#### 5 NAMING DEVICES

- To name the bulb(s) tap the **Pen** icon, enter the new name and tap **Done**. The bulb(s) is now ready to be controlled with the Feit Electric App.



For full user guide and setup instructions, please visit [www.feit.com](http://www.feit.com)

#### RF exposure statement

This equipment complies with the FCC RF radiation exposure limits set forth for an uncontrolled environment. This equipment should be installed and operated with a minimum distance of 20cm between the radiator and any part of your body.

This equipment meets the exemption from the routine evaluation limits in section 2.5 of RSS-102. It should be installed and operated with a minimum distance of 20cm between the radiator and any part of your body.

Cet équipement est conforme à l'exemption des limites d'évaluation habituelle de la section 2.5 de la norme RSS-102. Il doit être installé et utilisé à une distance minimale de 20 cm entre le radiateur et toute partie de votre corps.

#### FCC Warning

This device complies with Part 15 of the FCC Rules. Operation is subject to the following two conditions:

(1) This device may not cause harmful interference, and (2) this device must accept any interference received, including interference that may cause undesired operation.

**NOTE 1:** This equipment has been tested and found to comply with the limits for a Class B digital device, pursuant to part 15 of the FCC Rules. These limits are designed to provide reasonable protection against harmful interference in a residential installation. This equipment generates uses and can radiate radio frequency energy and, if not installed and used in accordance with the instructions, may cause harmful interference to radio communications. However, there is no guarantee that interference will not occur in a particular installation. If this equipment does cause harmful interference to radio or television reception, which can be determined by turning the equipment off and on, the user is encouraged to try to correct the interference by one or more of the following measures:

- Reorient or relocate the receiving antenna.
- Increase the separation between the equipment and receiver.
- Connect the equipment into an outlet on a circuit different from that to which the receiver is connected.
- Consult the dealer or an experienced radio/TV technician for help.

**NOTE 2:** Any changes or modifications to this unit not expressly approved by the party responsible for compliance could void the user's authority to operate the equipment.

#### IC WARNING

This device contains licence-exempt transmitter(s) that comply with Innovation, Science and Economic Development Canada's licence-exempt RSS(s). Operation is subject to the following two conditions:

- (1) This device may not cause interference.
- (2) This device must accept any interference, including interference that may cause undesired operation of the device.

L'émetteur/récepteur exempt de licence contenu dans le présent appareil est conforme aux CNR d'Innovation, Sciences et Développement économique Canada applicables aux appareils radio exempts de licence. L'exploitation est autorisée aux deux conditions suivantes:

1. L'appareil ne doit pas produire de brouillage;
2. L'appareil doit accepter tout brouillage radioélectrique subi, même si le brouillage est susceptible d'en compromettre le fonctionnement.