



深圳信诺山通信技术有限公司

Shenzhen Signalsen Telecom Technology Co., Ltd

WIFI 天线规格书

物料编号: W01-1Y150B-Z11

客户: 一诺成		项目名:	
频段: BT/WIFI		日期: 2022.11.14	版本: R:A
研发	结构:	审核:	批准:
	射频:	审核:	
客户审核:		客户批准:	

Manufacturer: SHENZHEN YNC ELECTRONIC CO., LTD
Model: KIDS707A

contents

contents	2
1. PROJECT INFORMATION AND ELECTRICAL SPECIFICATION	3
1-1 Project picture	3
1-2 Frequency Band:	3
1-3 Impedance matching	3
2.VSWR	3
2-1 Measuring Method:	3
2-2 S11 parameter values	4
3. EFFICIENCY AND GAIN	4
3-1 Efficiency/Peak Gain- WIFI	5
4. THE PRODUCTION INDEX	8
5.STRUCTURAL DRAWINGS	9

1. Project information and Electrical Specification

Those specifications were specially defined for WIFI model, and all characteristics were measured under the model's handset testing jig .

1-1 Project picture

1-2 Frequency Band:

Frequency Band	MHz
BT/WiFi	2400-2500

1-3 Impedance matching

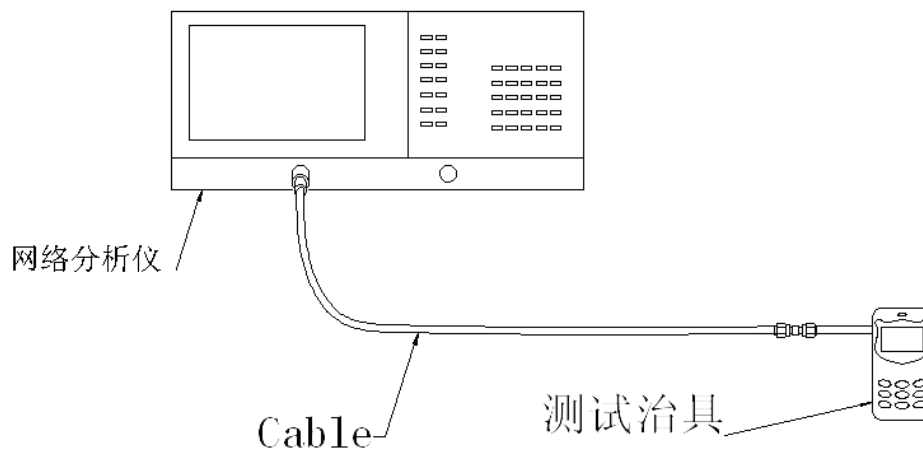
天线原匹配

2.VSWR

2-1 Measuring Method:

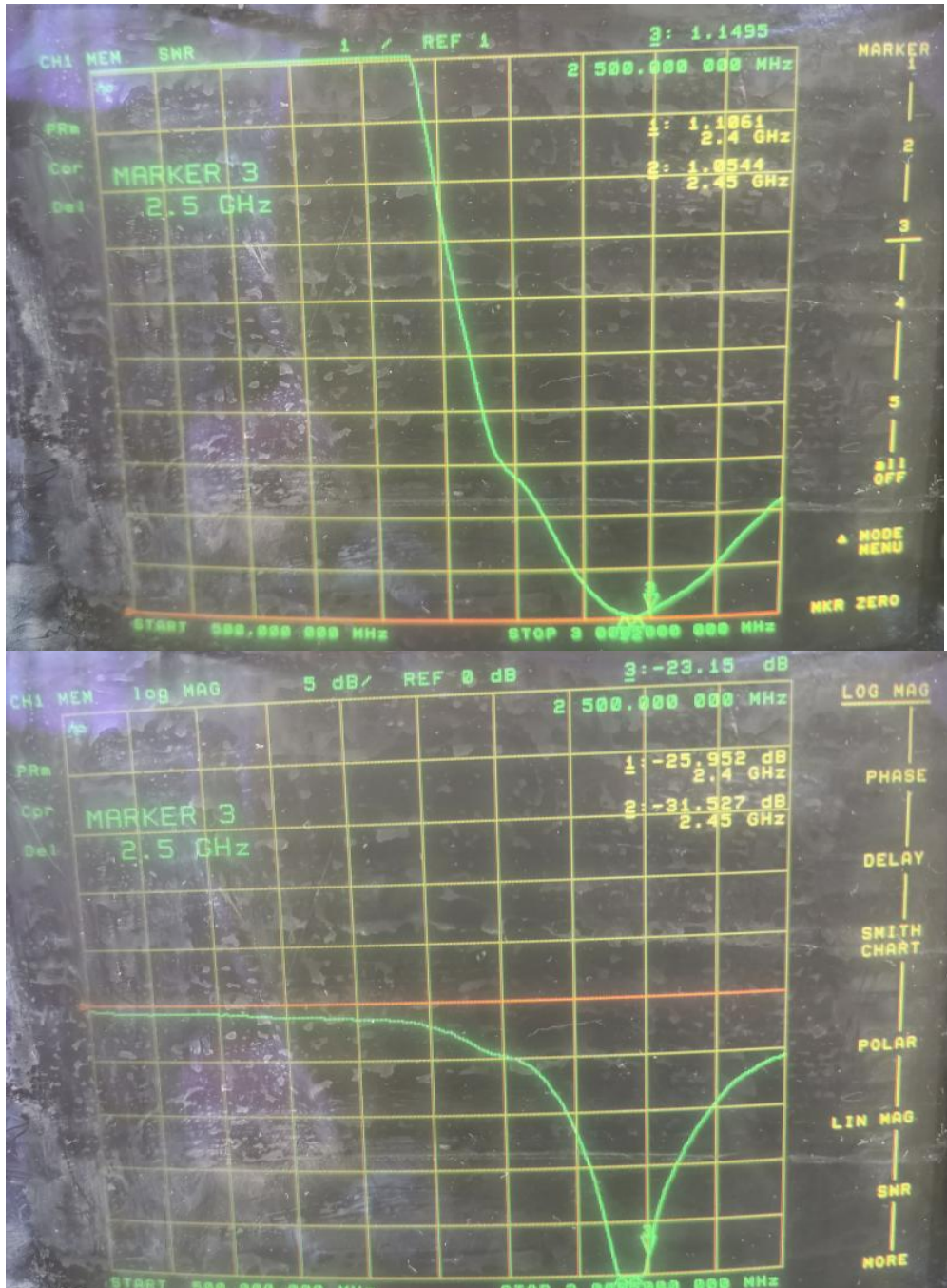
- 1. A 50 Ω coaxial cable is connected to the antenna. Then this cable is connected to a network analyzer to measure the VSWR,*
- 2. Keeping this jig away from metal at least 20cm.*

测试示意图如下:



2-2 S11 parameter values

频率 (MHZ)	2400	2450	2500
VSWR	1.10	1.05	1.14
R. L	-25.95	-31.52	-23.15



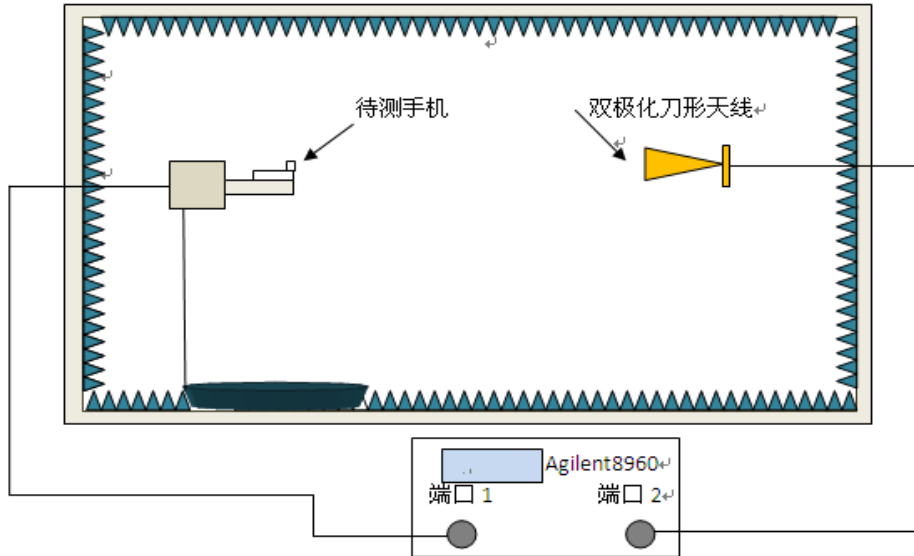
3. Efficiency and Gain

*measuring and test instruments:

微波暗室, Agilent 网络分析仪, Agilent 频谱分析仪, 8960 综合测试仪, 标准天线
 Microwave anechoic chamber, Agilent network analyzer, Agilent spectrum analyzer,
 8960 comprehensive tester, standard antenna

***test method:**

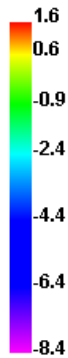
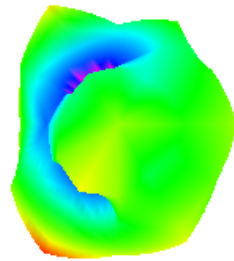
equipment 以 H 面放于转台中心位置固定，与喇叭天线中心位置在同一个水平线上。
It is fixed in the center position of the turntable with plane H, and is on the same horizontal line with the center position of the horn antenna.



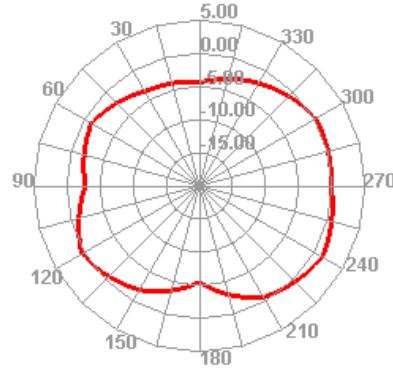
3-1 Efficiency/Peak Gain

Freq (MHz)	Effi (%)	Effi (dB)	Gain (dBi)
2400	73.28	-1.35	1.59
2410	66.56	-1.77	1.55
2420	71.82	-1.44	1.61
2430	65.79	-1.82	1.65
2440	67.83	-1.69	1.99
2450	68.16	-1.66	2.15
2460	68.81	-1.62	2.16
2470	66.25	-1.79	1.89
2480	70.58	-1.51	2.05
2490	70.85	-1.5	2.22
2500	74	-1.31	2.28

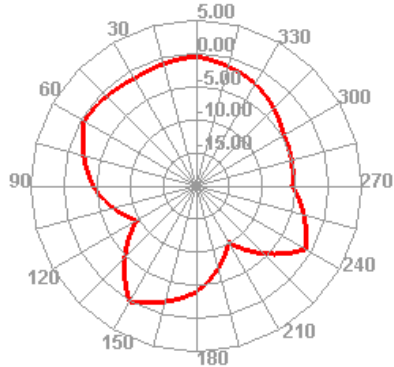
2400.000MHz



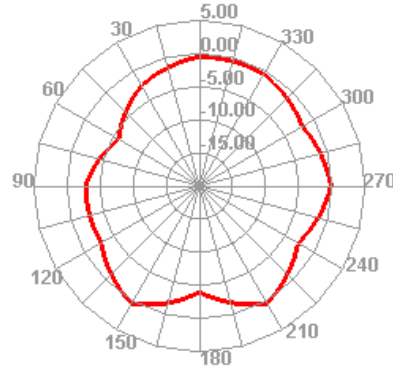
2400.000MHz H



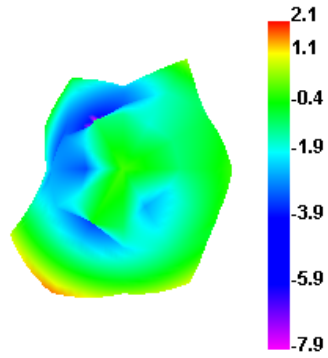
2400.000MHz E1



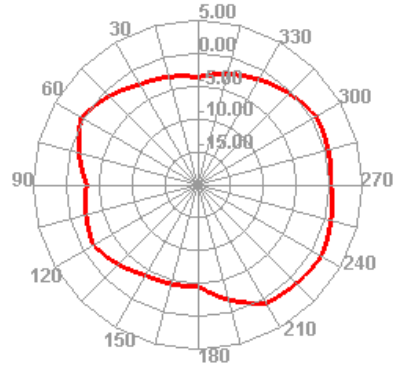
2400.000MHz E2



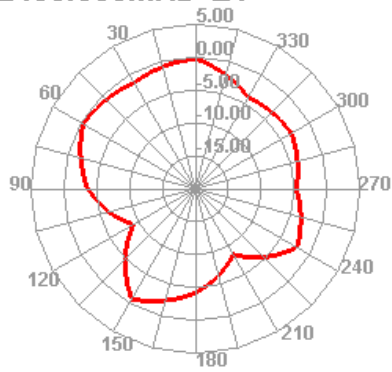
2450.000MHz



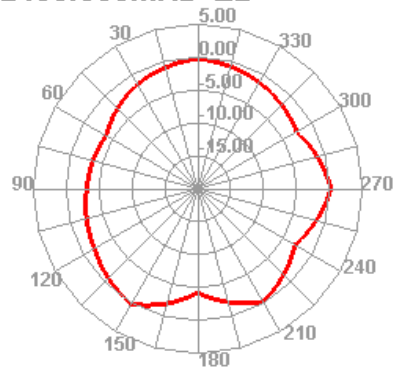
2450.000MHz H



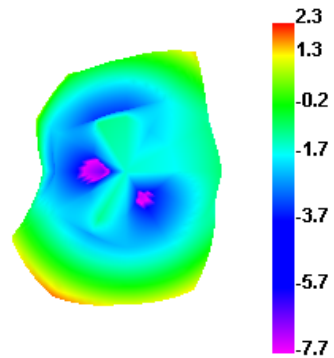
2450.000MHz E1



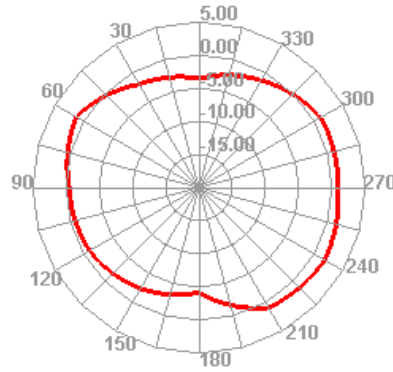
2450.000MHz E2



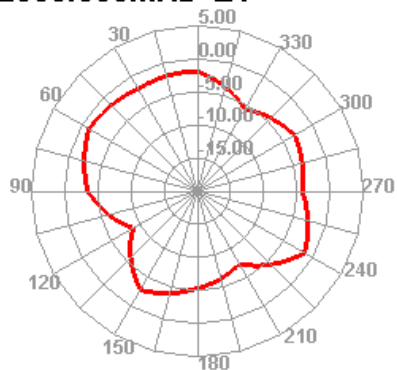
2500.000MHz



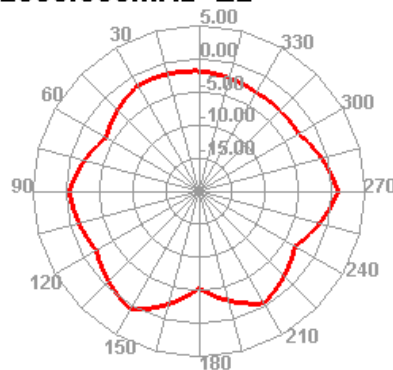
2500.000MHz H



2500.000MHz E1



2500.000MHz E2



5. Structural drawings

