

承 认 书

SPECIFICATION FOR APPROVAL

客户名称

CUSTOMER NAME: 创维/SKYWORTH

产品名称/Product Name

PRODUCT NAME: Z10 外置天线 2.4~5.8GHz0mmRF4 代黑色 2.4G/5G 双频

天线/External antenna Generation 4 Black Dual frequency antenna

客户料号/Customer item No

CUSTOMER P/N: N012102-000274-001

	MANUFACTURER SIGNATURE	CUSTOMER SIGNATURE
CHECKED BY:	颜培浩/Yan peihao	
APPROVED BY:	冯娟/Feng Juan	
DATE:	2022.07.18	

地址:深圳市宝安区 28 区大宝路金富来大厦 A 座 401-407 /Address:401-407, block a, jinfulai building, Dabao Road, 28 District, Bao'an District, Shenzhen

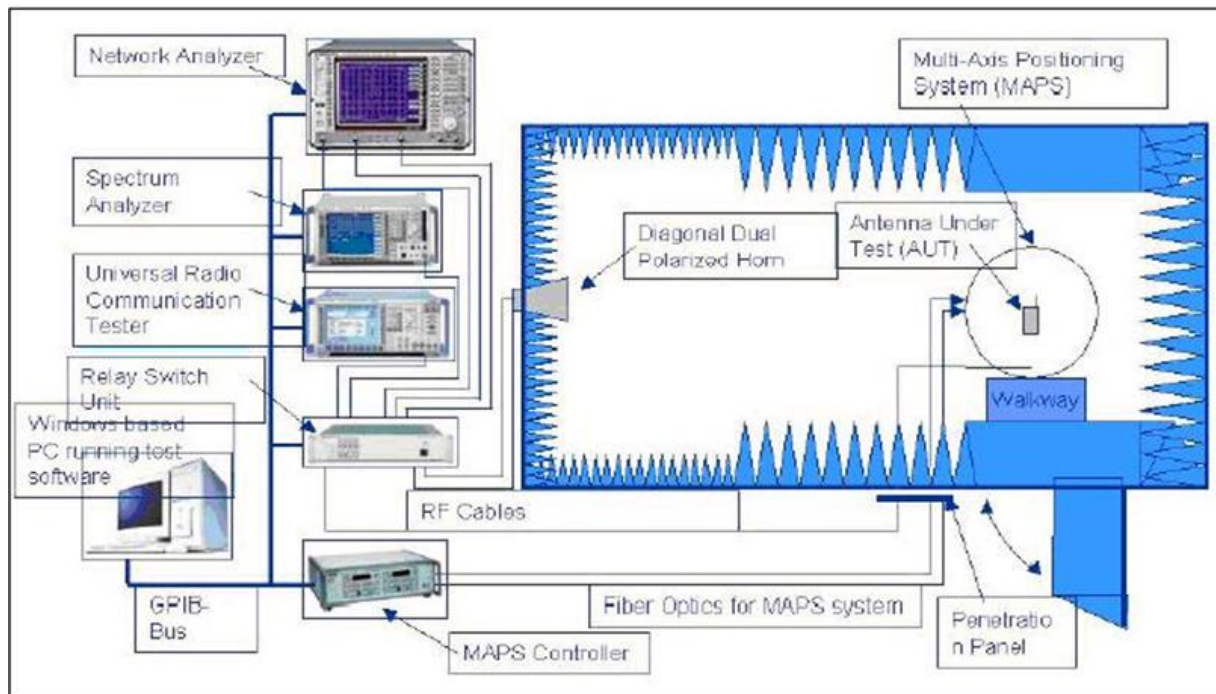
电话: 0755-27728733 /Telephone

传真: 0755-27805416 /Fax

Contents

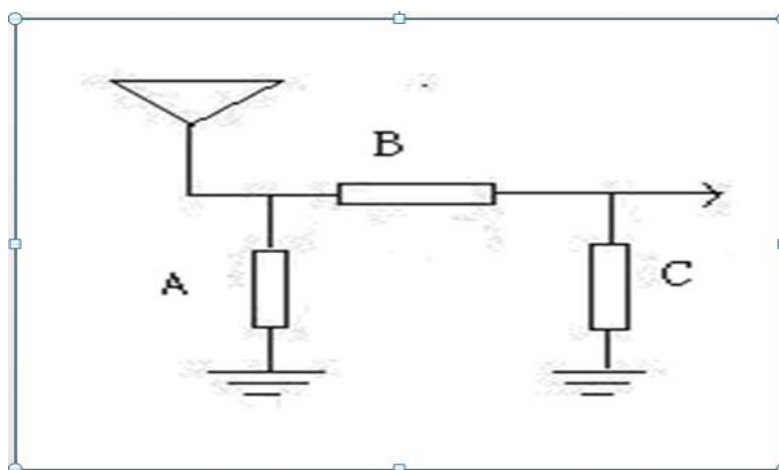
<i>Item</i>	<i>Description</i>
1.	测试仪器及环境/Test instrument and environment
2.	匹配电路/Matching circuit
3.	整机与天线图片/Pictures of complete machine and antenna
4.	天线 S11, ReturnLoss, Smith 圆图/antenna Circular diagram
5.	WIFI 有源测试数据/Active test data
6.	天线效率增益/ Antenna efficiency gain
7.....	天线线样图/Antenna line sample

1. 测试仪器及环境: CTIA 743 暗室, 5071/CMW500, 测试设备背向放置离标准喇叭天线 4 米转台处/Test instrument and environment darkroom Test equipment backPlace it on the turntable 4m away from the standard horn antenna



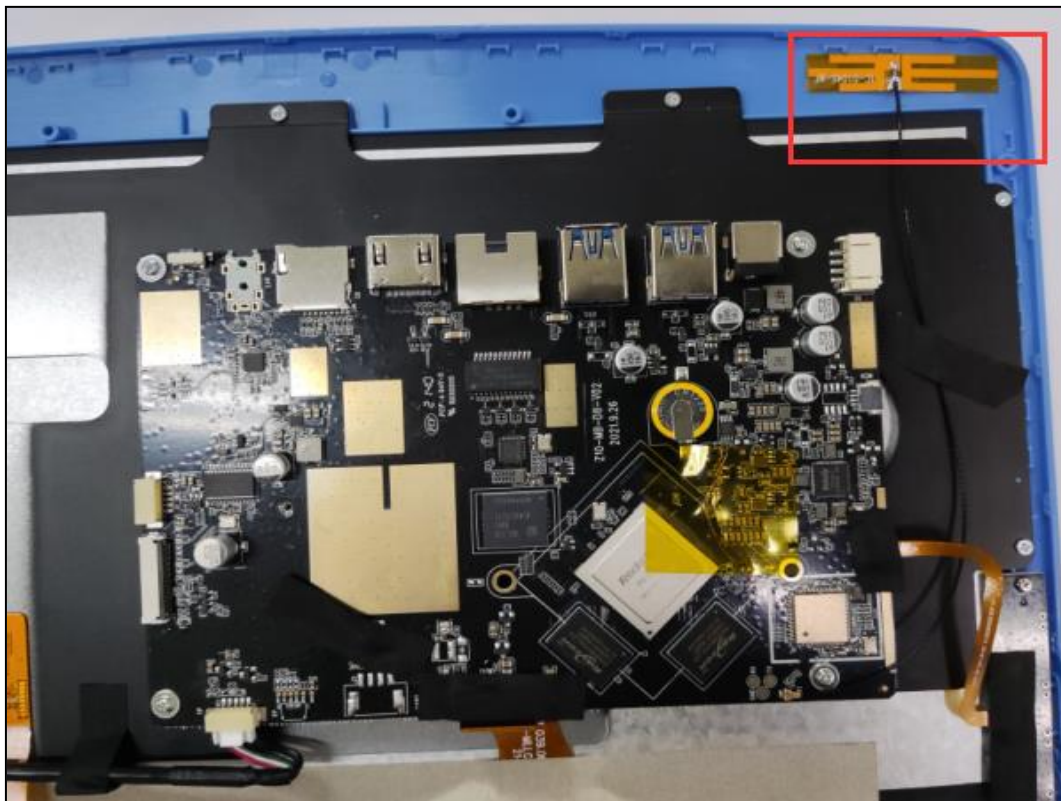
2. 匹配电路/ matching circuit

匹配电路无更改。/Matching circuit: no change

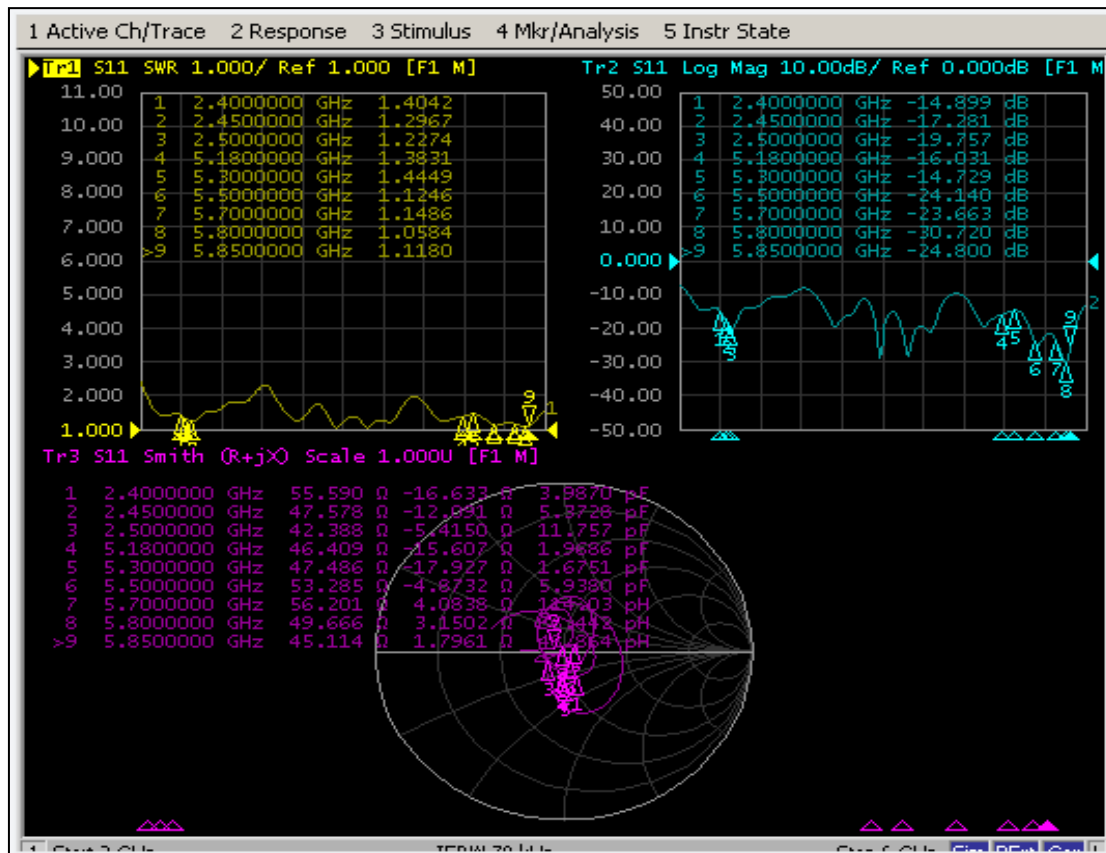


匹配电路 /Matching circuit	A	B	C
---------------------------	---	---	---

3. 整机与天线位置图片/Picture of complete machine and antenna position



4.天线 S11, ReturnLoss, Smith 圆图/ antennaCircular diagram



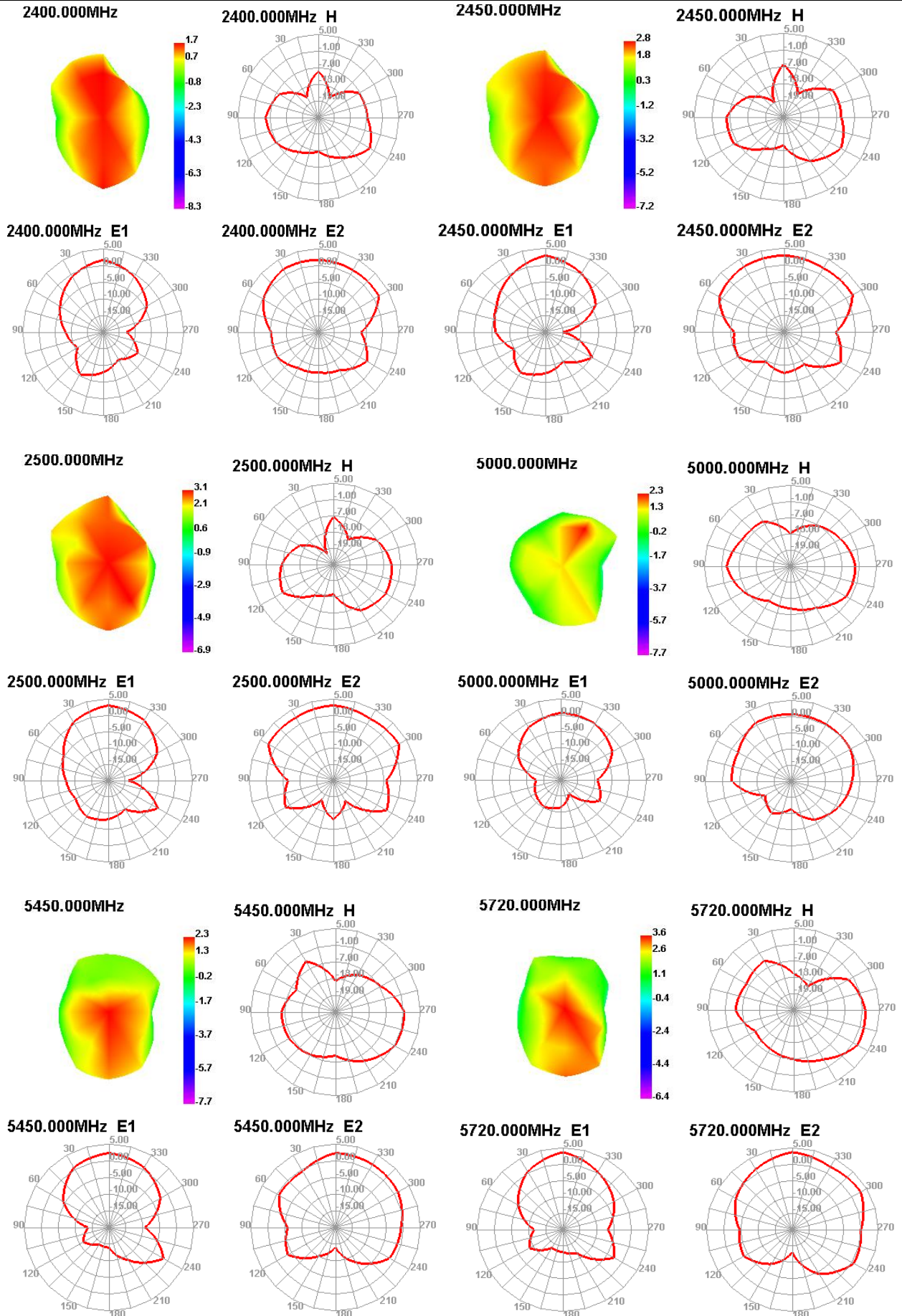
5.WIFI 有源测试数据/Active test data

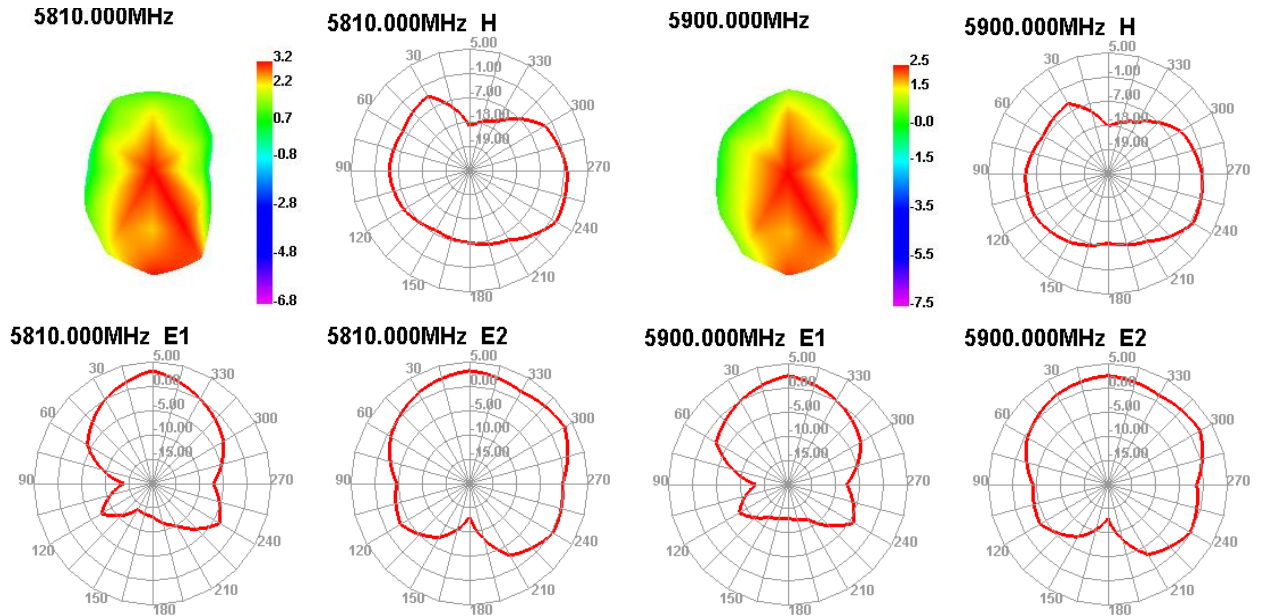
WIFI2.4G b模			
Test	WIFI		
Result	1	6	11
TRP (dBm) 11Mbps	14.61	14.08	15.13
TIS (dBm) 11Mbps			-82.21
WIFI2.4G g模			
Test	WIFI		
Result	1	6	11
TRP (dBm) 54Mbps	13.62	13.19	14.12
TIS (dBm) 54Mbps			-72.21
WIFI2.4G N模			
Test	WIFI		
Result	1	6	11
TRP (dBm) MCS7	13.23	13.06	13.72
TIS (dBm) MCS7			-70.19

WIFI 5G a模			
Test	WIFI		
Result	36	149	161
TRP (dBm) 6MBps	12.13	11.23	11.26
Test	WIFI		
TIS (dBm) 54MBps			-70.26
WIFI 5G g模			
Test	WIFI		
Result	36	149	161
TRP (dBm) 54MBps	11.26	11.25	11.19
Test	WIFI		
TIS (dBm) 54MBps			-69.73
WIFI 5G N模			
Test	WIFI		
Result	36	149	161
TRP (dBm) MCS7	10.79	11.37	11.06
Test	WIFI		
TIS (dBm) MCS7			-69.46

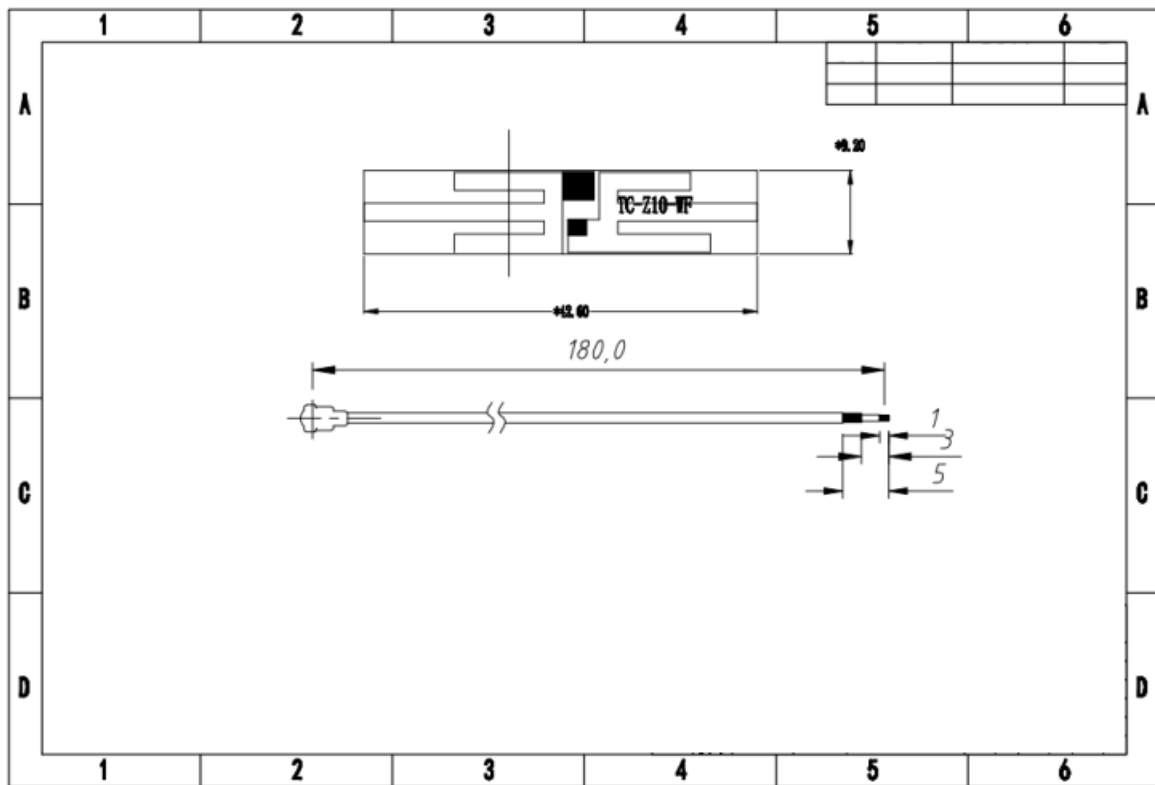
6.天线效率增益/Antenna efficiency gain

Freq (MHz)	Effi (%)	Gain (dBi)	Freq (MHz)	Effi (%)	Gain (dBi)
2400	48.86	1.74	5000	47.48	2.26
2405	48.94	1.82	5045	47.68	2.27
2410	48.52	1.85	5090	53.33	2.39
2415	49.15	1.95	5135	53.95	2.42
2420	50.5	2.09	5180	49.44	1.5
2425	51.11	2.21	5225	50.18	1.71
2430	51.56	2.31	5270	48.8	1.78
2435	53.45	2.52	5315	49.07	2.04
2440	49.61	2.64	5360	49.99	2.24
2445	50.03	2.73	5405	53.82	2.74
2450	50.66	2.83	5450	52.01	2.28
2455	49.84	2.79	5495	47.97	2.34
2460	49.83	2.72	5540	47.68	2.71
2465	50.16	2.68	5585	53.09	3.07
2470	50.55	2.71	5630	61.07	3.27
2475	51.88	2.78	5675	60.62	3.25
2480	53.82	2.87	5720	62.62	3.65
2485	55.85	3.04	5765	63.62	3.59
2490	56.14	2.98	5810	63.04	3.18
2495	56.17	2.93	5855	63.83	3.02
2500	56.96	3.06	5900	57.07	2.49





7.天线线样图/Antenna line sample



天线制造商：深圳通诚无限科技有限公司/Antenna manufacturer:Shenzhen Tongcheng infinite Technology Co., Ltd

天线类型：单极/对称偶极子 FPC 软板电路板天线/Antenna type:Monopole / symmetrical dipole FPC flexible board circuit board antenna

天线尺寸：42.6X9.2mm/Antenna size

天线型号：TC-Z10-WF/Antenna model