

Bluetooth Gaming Earbuds

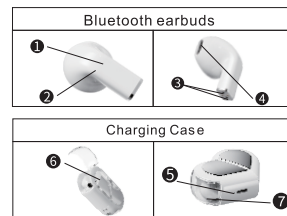
User Manual



NOTES!

1. To make safety, we strongly recommend you to read the manual and operate strictly according to requirements.
2. Please use standard charger to charge the earphone in case of causing battery damaged.
3. Repeat charging or discharging the earphone will cause battery performance reduction. It is normal for rechargeable battery.
4. Please keep away from fire when using the earphone.
5. Please do not make the ports blocked, such as charging port, LED and earphone etc.
6. Please don't use the earphone at high volume or for a long time to avoid affecting the user's hearing.
7. Please don't disassemble the earphone for any reason in case of damaging the product.
8. Please don't clean the earphone with oil or other corrosive cleaning agents.
9. Please don't use the earphone in potentially dangerous places.

Overview & Introduction



- | | |
|------------------------------|-------------------|
| ① Touch keys | ② Indicator light |
| ③ Earphone charging ports | ④ Speaker |
| ⑤ Charging case charge port | ⑥ Change Logo |
| ⑦ LED light of charging case | |

ACCESSORIES

- | | |
|---------------------|-----------------|
| Bluetooth earbuds*2 | User manual * 1 |
| Charging case * 1 | USB cable * 1 |

QUICK PAIRING

First Step

Press the charging case cover opening button, take out L/R earbuds and wear L/R properly. You will hear "di" prompt sound in 1-3 seconds, indicating that the L/R earbuds have paired successfully.

Second Step

Open mobile phone's bluetooth setting and search "K520" from the Bluetooth menu of mobile phone to connect pairing successfully. Note: the earbuds will connect to the last paired device automatically when they are turned on again next time.

Touch Control

- Play/Pause
When music, click L or R one time
- Next track
When music, click R two times
- Previous track
When music, click L two times
- Answer/Hang up
When incoming call/phone talking, click L or R one time
- Reject call
When incoming call, click L or R two times
- Voice assistant
When connection, keep click on L or R for 3 seconds
- Left click 3 times to increase volume
Right click 3 times to decrease the volume

Charging Instruction

1. Charge the Earbuds

Open the charging case cover, put R earbuds into charging case properly, the charging case indicator flashes once. Put L earbuds into charging case properly and charging case indicator will also flash once, then breathing light cycle is on. The indicator light goes off after the earbuds are fully charged.

2. Charge the Charging Case

The charging case indicator light flashes, indicating low power. Please make sure to use safety standard 5V/2A power adapter to charge the earphone. During charging, the indicator light is breathing on and then long-on after fully charged.

Click the light effect switch to turn on, click again to turn off. The light effect will be off automatically in 3 minutes after turn on.

Specifications

Model No.: K520
 Bluetooth Version: 5.3+EDR
 Bluetooth Protocol: HFP/HSP/A2DP/AVRCP
 Earphone battery: 25mA
 Charging box battery: 230mA
 Music/Talking Time: > 5 hours
 Standby Time: > 100 hours
 Charging Time: 1 hour
 Charging Times: Charging case charge earphone > 3 times

Notes!
 The product parameters will be different depending on the model, use mode, environment, etc.

FCC ID: 2AVJD-K520

FCC STATEMENT

1. This device complies with Part 15 of the FCC Rules. Operation is subject to the following two conditions:
 (1) This device may not cause harmful interference.
 (2) This device must accept any interference received, including interference that may cause undesired operation.
2. Changes or modifications not expressly approved by the party responsible for compliance could void the user's authority to operate the equipment.

NOTE: This equipment has been tested and found to comply with the limits for a Class B digital device, pursuant to Part 15 of the FCC Rules. These limits are designed to provide reasonable protection against harmful interference in a residential installation. This equipment generates uses and can radiate radio frequency energy and, if not installed and used in accordance with the instructions, may cause harmful interference to radio communications. However, there is no guarantee that interference will not occur in a particular installation. If this equipment does cause harmful interference to radio or television reception, which can be determined by turning the equipment off and on, the user is encouraged to try to correct the interference by one or more of the following measures:

- Reorient or relocate the receiving antenna.
 - Increase the separation between the equipment and receiver.
 - Connect the equipment into an outlet on a circuit different from that to which the
 - Consult the dealer or an experienced radio/TV technician for help.
 - RF warning statement
- The device has been evaluated to meet general RF exposure requirement. The device can be used in portable exposure condition without restriction.

50*70mm