



**DOC JOHNSON**  
**OptiMALE™**  
 Men's Sexual Health + Wellness  
**P-Curve**  
 Multi-Function • Rechargeable  
 Wireless • Silicone



**Instruction Manual**

**OPERATING INSTRUCTIONS**

**To Operate P-Curve:**

- **To power on/off** } Press and hold  button until LED begins to flash. Press and hold until LED goes out to power off.
- **To cycle through vibrating functions using the power button** } Press  without holding.
- **To cycle through vibrating functions using the remote control** } Press button on remote without holding.
- Power button LED on the P-Curve will flash and intensify with different vibration patterns. **Pressing and holding remote button will pause vibration without powering off massager.**

**To Charge P-Curve:**

- Plug wide USB end of charger into a USB power source, and insert charger into the small port on rear base. LED flashes while properly connected and charging, and displays a solid light when charging is complete. **Charging Time: 2 hours**  
**Usage Time: 2 hours**

**CARE INSTRUCTIONS**

To clean, spray with Doc Johnson Toy Cleaner or wash with a mild soap and warm water. Allow to dry completely before storing separately from other toys in a cool, dry place. Use with water-based lubricant/glide.

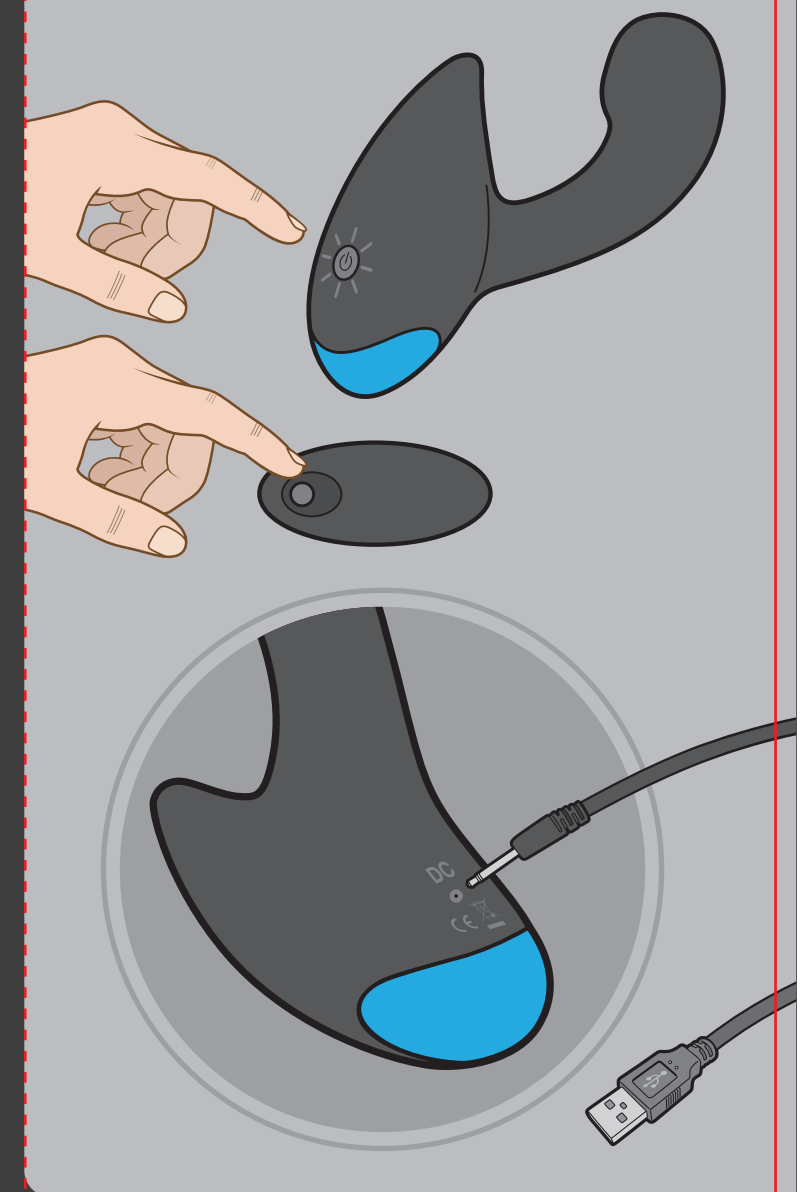
\*Doc Johnson Toy Cleaner sold separately.

**Approximate Product Dimensions:**

Prostate Massager Total Length: 5.5 in. (13.97 cm)  
 Insertable Length: 3.5 in. (8.89 cm)  
 Width: 1.25 in. (3.18 cm)  
 Circumference: 4 in. (10.16 cm)

**Warning for Vibrating Products:** To avoid injury or aggravation of pre-existing conditions, this product should not be used on swollen or inflamed areas or skin lacerations. No medical claims are warranted or implied by the use of this product.

For warranty information, go to [DOCJOHNSON.COM](http://DOCJOHNSON.COM)



**Socialize with the Doc**  
[www.docjohnson.com/social-media](http://www.docjohnson.com/social-media)

**DOCJOHNSON.com**

INS-0691-12  
 R0621

Die #: Date: 6/7/2021 Artist: LM YOUNG

Item #: INS-0691-12 Substrate: Paper



INKS: CMYK

COATING:

TREATMENTS:

**\* PLEASE REFER TO LAYERS IN THE FILES FOR TREATMENTS \***

This device complies with Part 15 of the FCC Rules. Operation is subject to the following two conditions: (1) this device may not cause harmful interference, and (2) this device must accept any interference received, including interference that may cause undesired operation

NOTE: This equipment has been tested and found to comply with the limits for a Class B digital device, pursuant to Part 15 of the FCC Rules. These limits are designed to provide reasonable protection against harmful interference in a residential installation. This equipment generates, uses and can radiate radio frequency energy and, if not installed and used in accordance with the instructions, may cause harmful interference to radio communications. However, there is no guarantee that interference will not occur in a particular installation.

If this equipment does cause harmful interference to radio or television reception, which can be determined by turning the equipment off and on, the user is encouraged to try to correct the interference by one or more of the following measures:

- Reorient or relocate the receiving antenna.
- Increase the separation between the equipment and receiver.
- Connect the equipment into an outlet on a circuit different from that to which the receiver is connected.
- Consult the dealer or an experienced radio/TV technician for help.

Warning: changes or modifications not expressly approved by the party responsible for compliance could void the user's authority to operate the equipment