

Appendix E: Reference level measurement

Test Result

Test Mode	Antenna	Freq(MHz)	Max.Point[MHz]	Result[dBm]
BLE_1M	Ant1	2402	2401.76	1.53
		2440	2439.76	1.75
		2480	2479.75	0.53
BLE_2M	Ant1	2402	2401.50	-0.79
		2440	2439.50	-0.54
		2480	2479.50	-1.79

Test Graphs



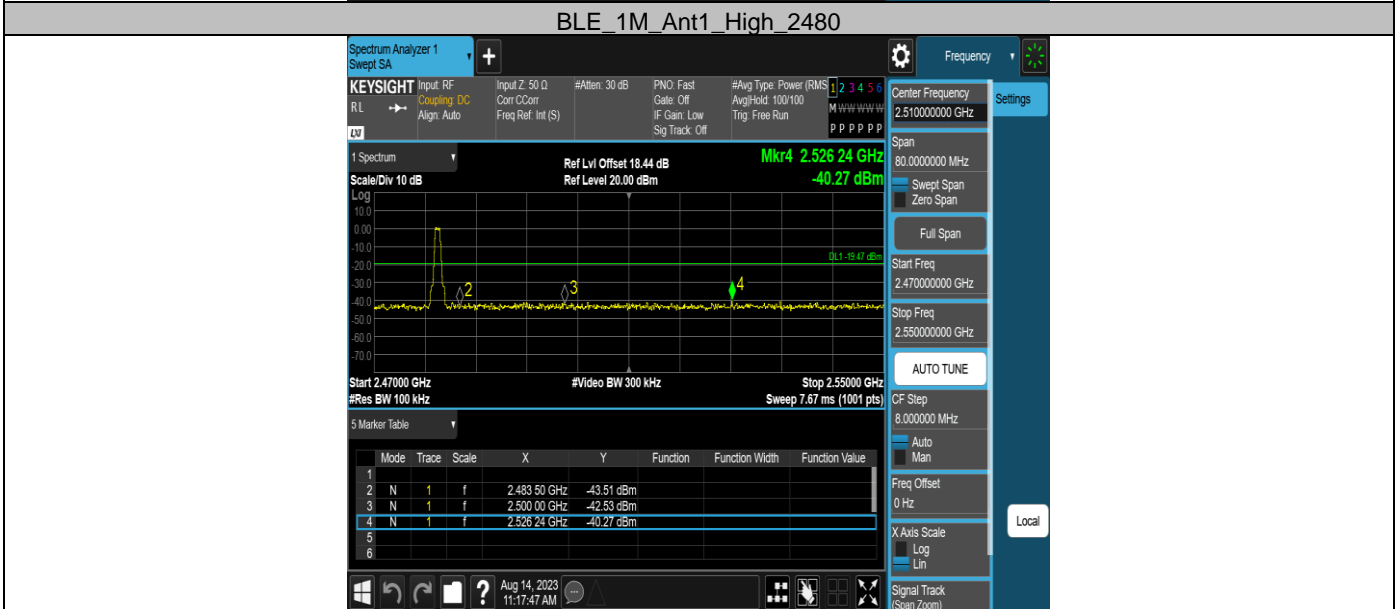
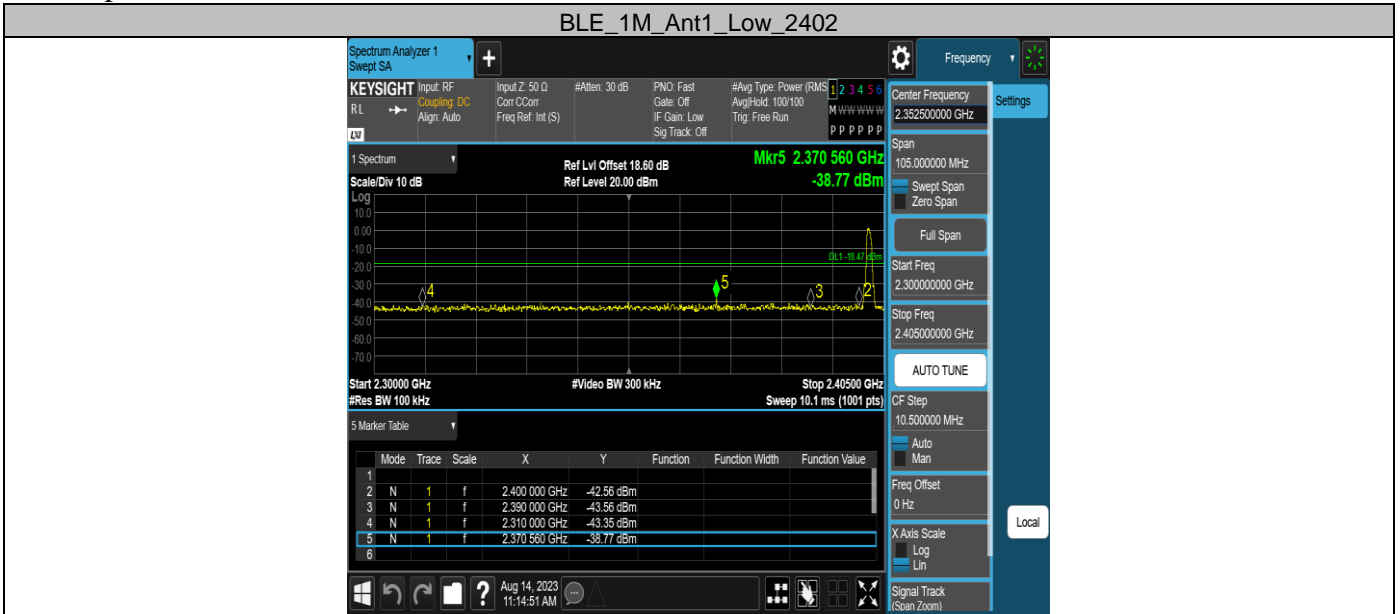


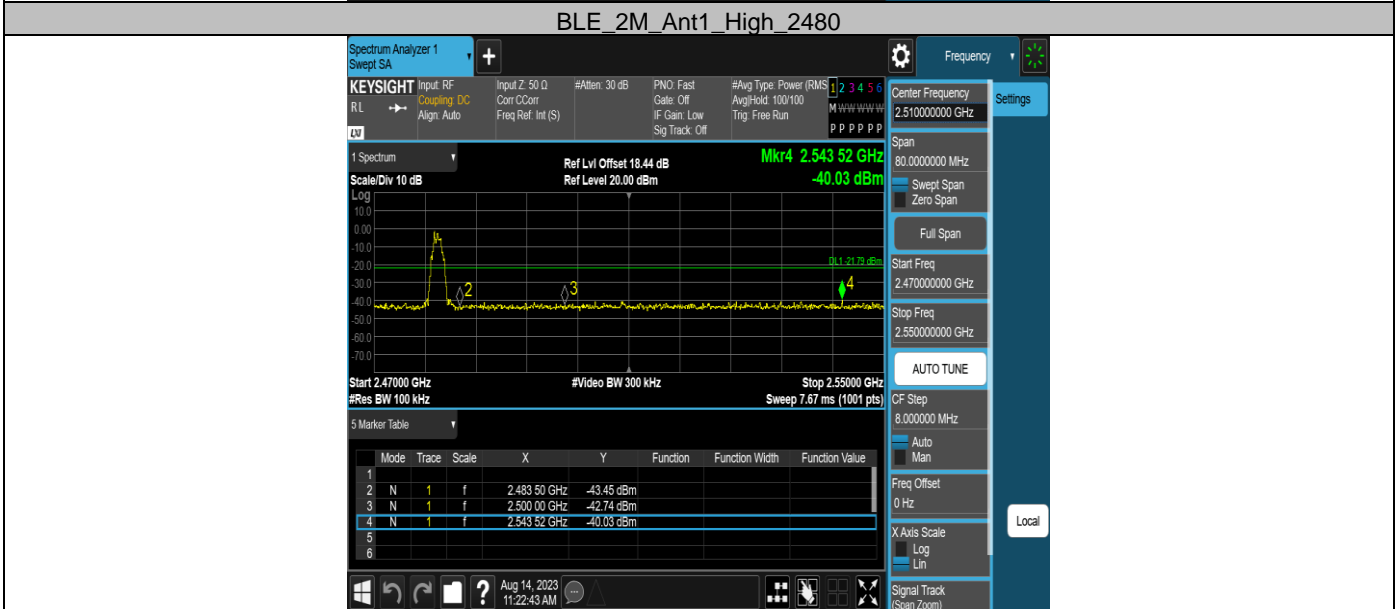
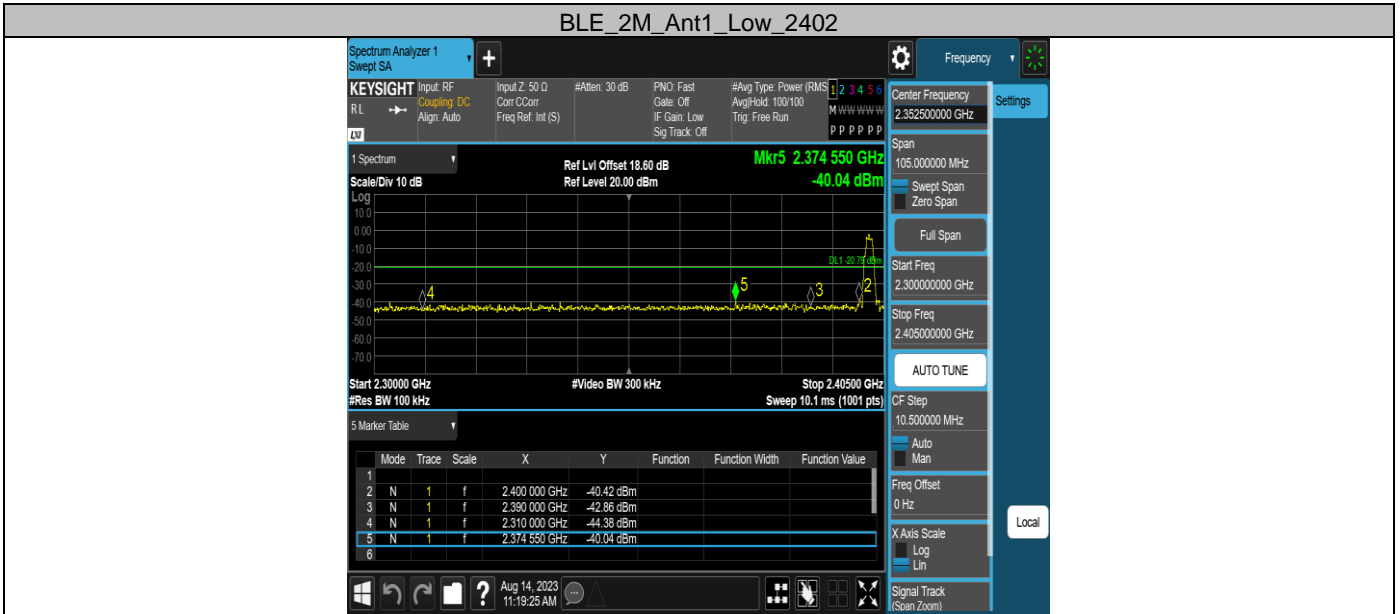
Appendix F: Band edge measurements

Test Result

Test Mode	Antenna	Ch Name	Frequency [MHz]	Ref Level [dBm]	Result [dBm]	Limit [dBm]	Verdict
BLE_1M	Ant1	Low	2402	1.53	-38.77	≤ -18.47	PASS
		High	2480	0.53	-40.27	≤ -19.47	PASS
BLE_2M	Ant1	Low	2402	-0.79	-40.04	≤ -20.79	PASS
		High	2480	-1.79	-40.03	≤ -21.79	PASS

Test Graphs

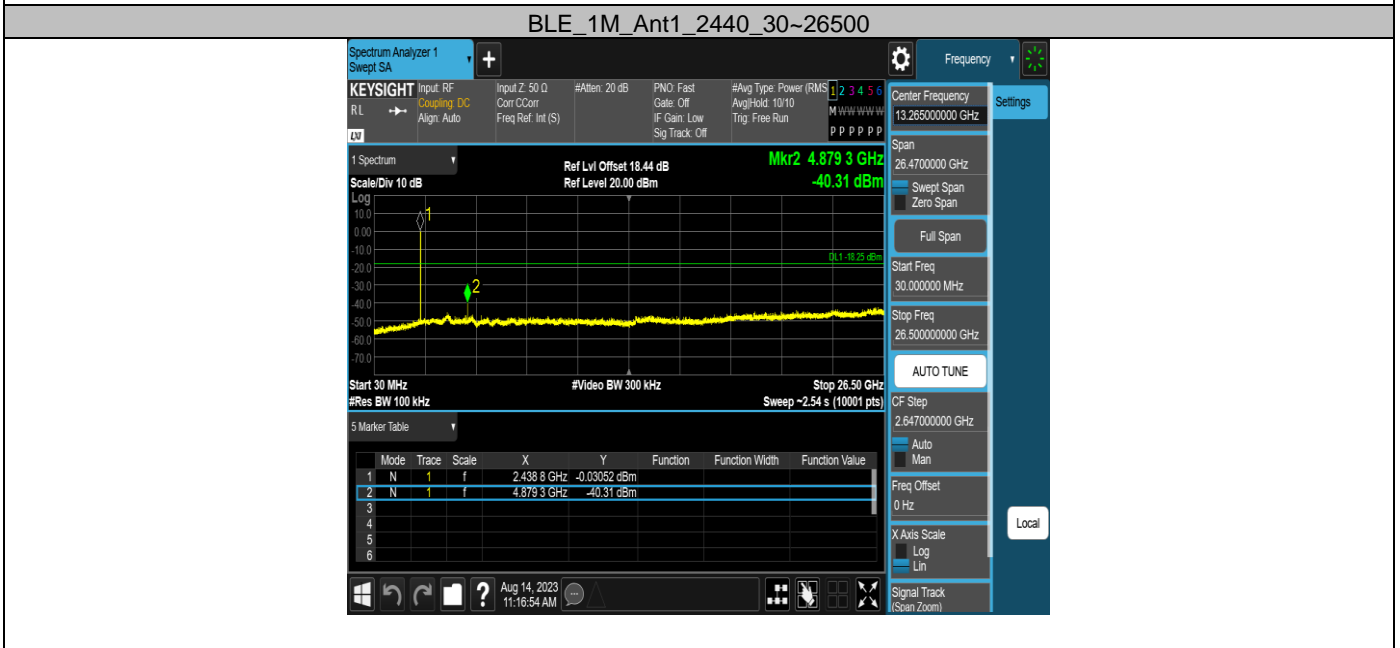
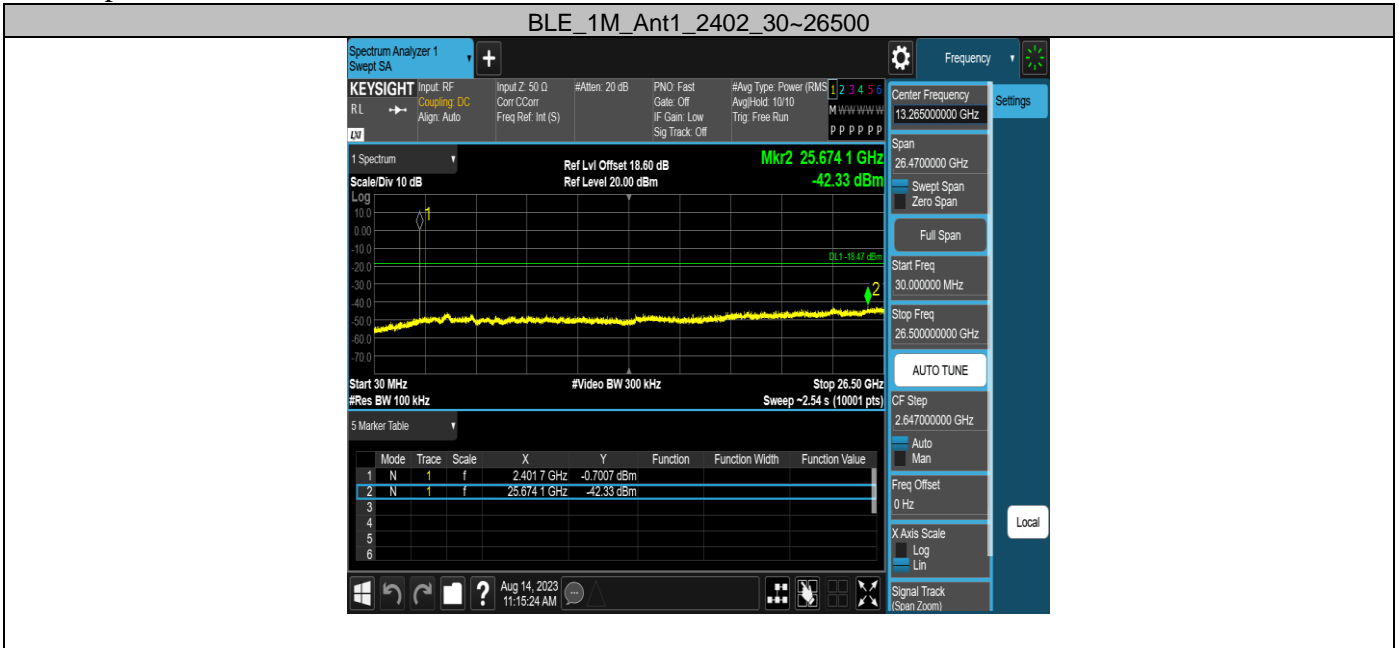


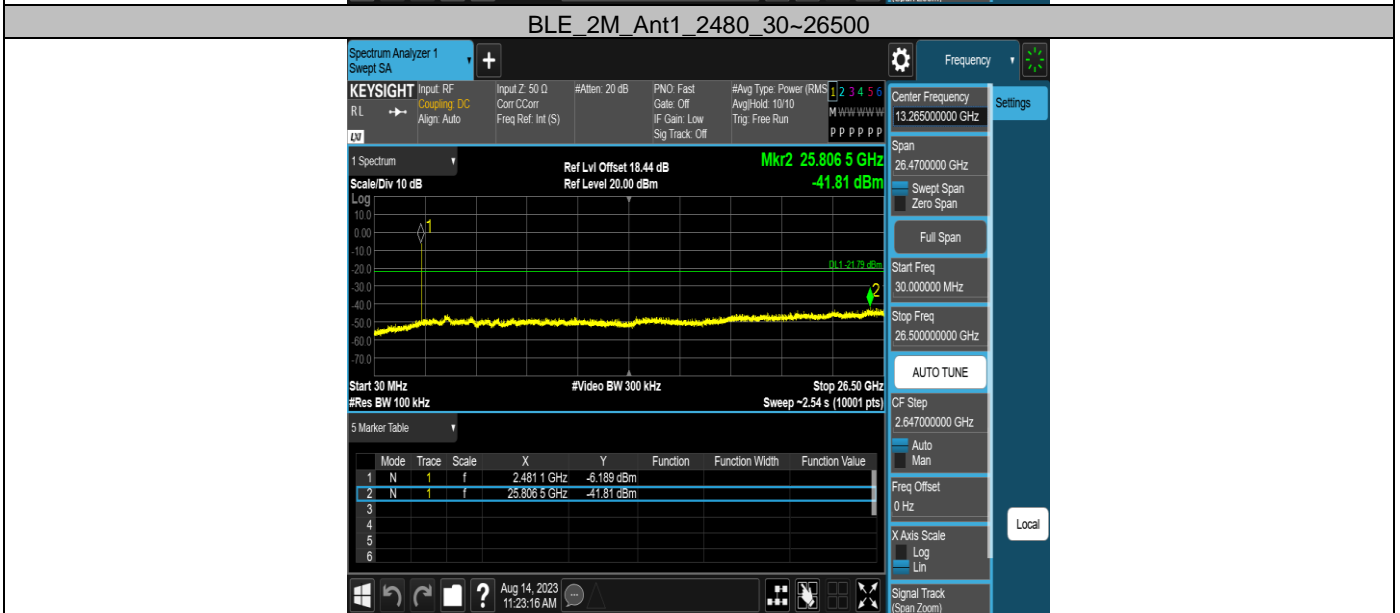
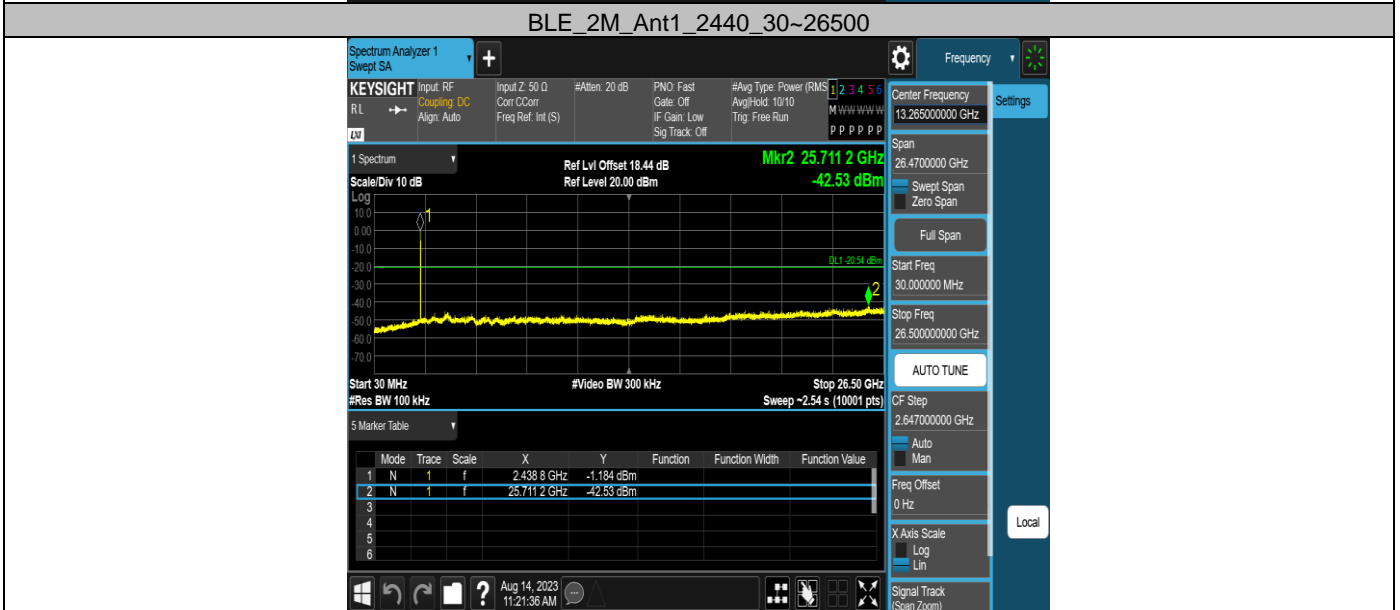
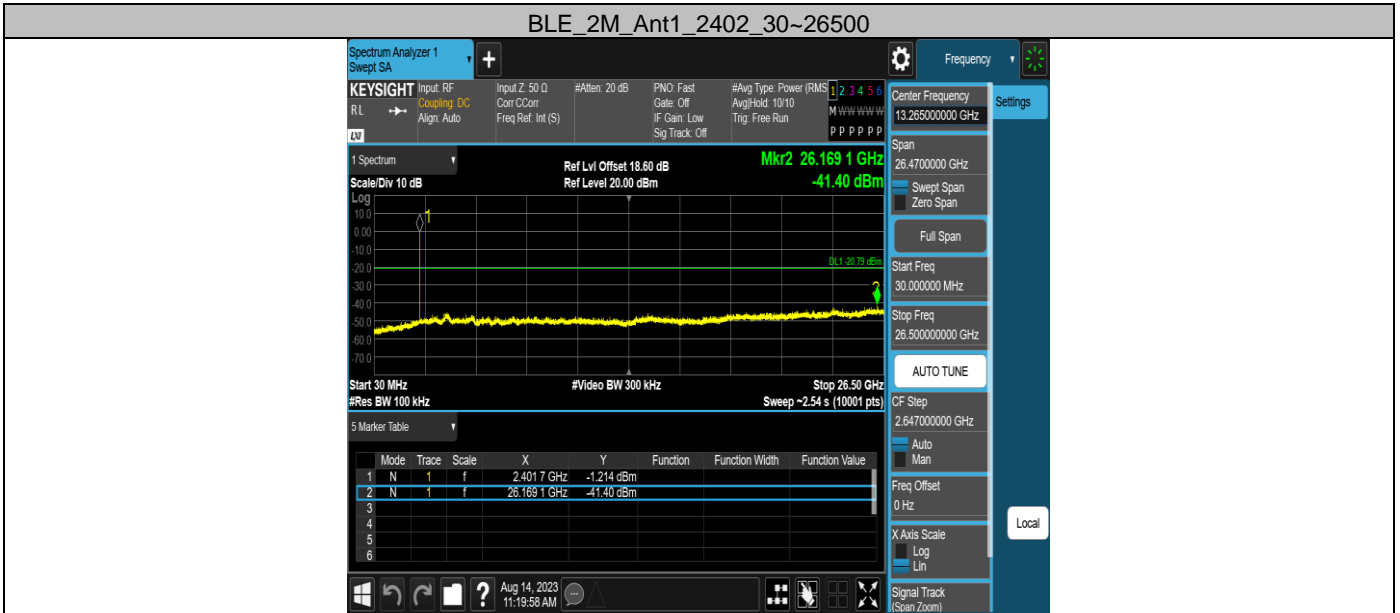


Appendix G: Conducted Spurious Emission Test Result

Test Mode	Antenna	Frequency[MHz]	Freq Range [MHz]	Ref Level [dBm]	Result [dBm]	Limit[dBm]	Verdict
BLE_1M	Ant1	2402	30~26500	1.53	-42.33	≤-18.47	PASS
		2440	30~26500	1.75	-40.31	≤-18.25	PASS
		2480	30~26500	0.53	-42.42	≤-19.47	PASS
BLE_2M	Ant1	2402	30~26500	-0.79	-41.4	≤-20.79	PASS
		2440	30~26500	-0.54	-42.53	≤-20.54	PASS
		2480	30~26500	-1.79	-41.81	≤-21.79	PASS

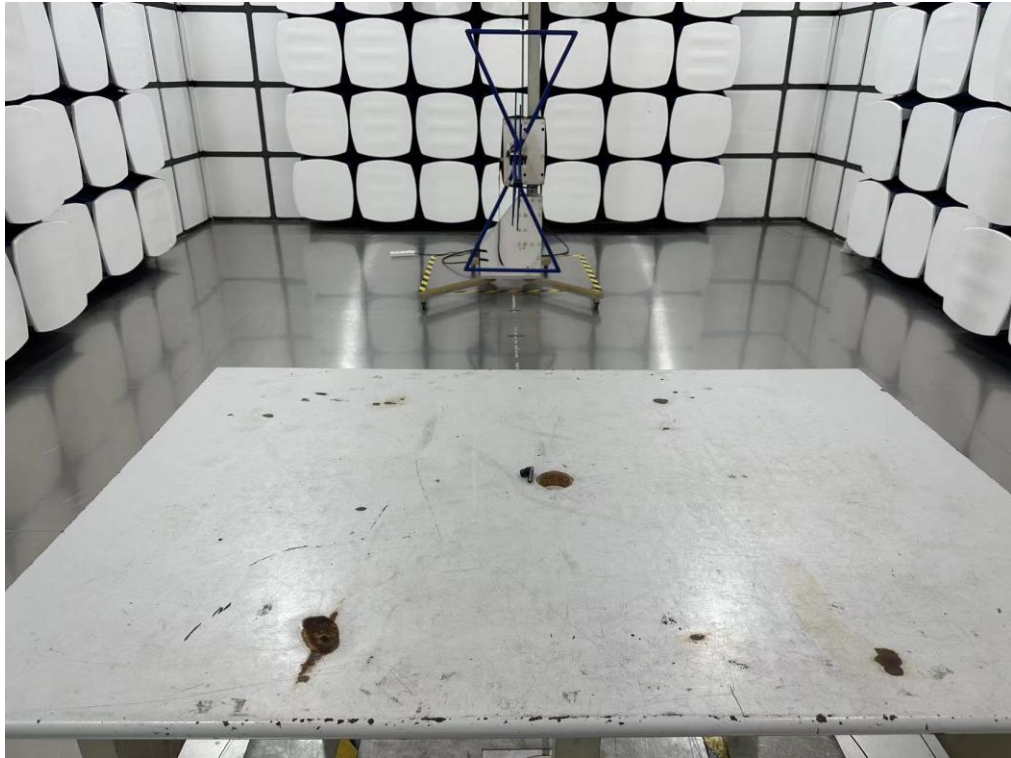
Test Graphs



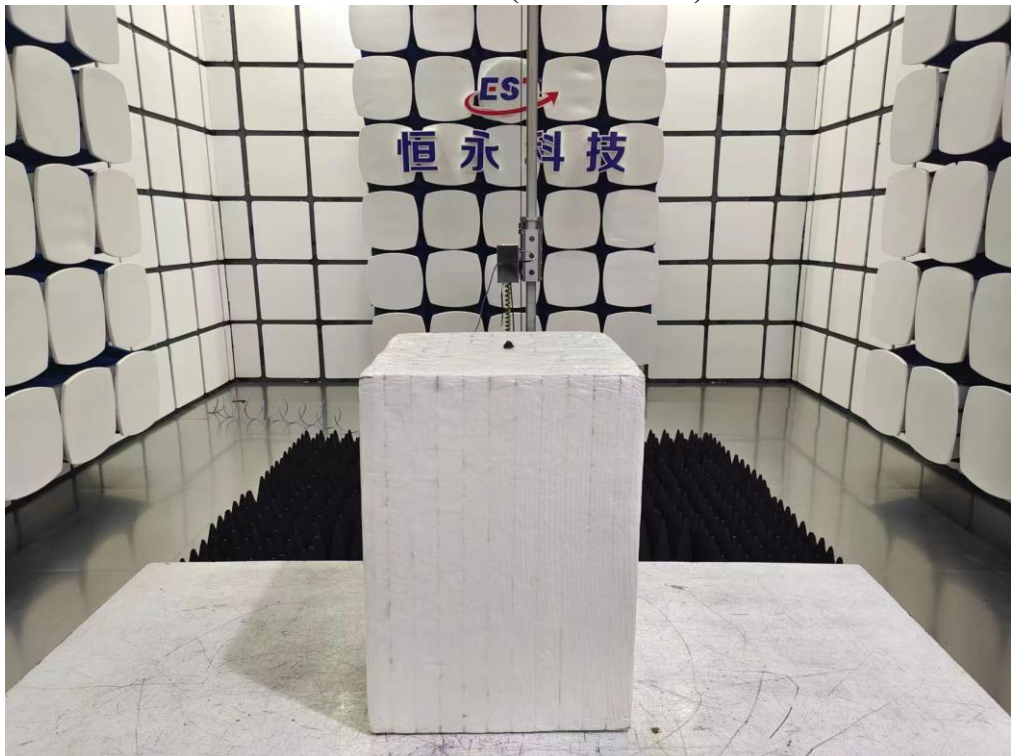


11. TEST SETUP PHOTO

Radiated Test (Below 1GHz)



Radiated Test (Above 1GHz)



12. EUT PHOTO

External Photos
M/N: TW210



External Photos
M/N: TW210



External Photos
M/N: TW210



External Photos
M/N: TW210



External Photos
M/N: TW210



Right Earbuds



External Photos
M/N: TW210



External Photos
M/N: TW210



External Photos
M/N: TW210

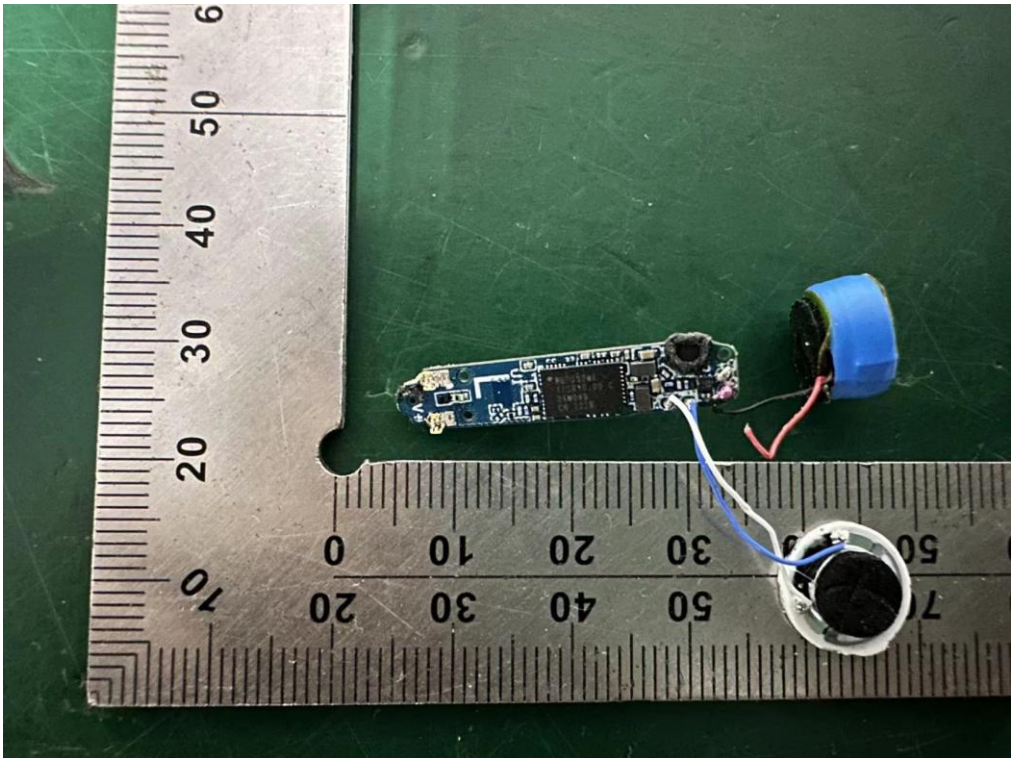
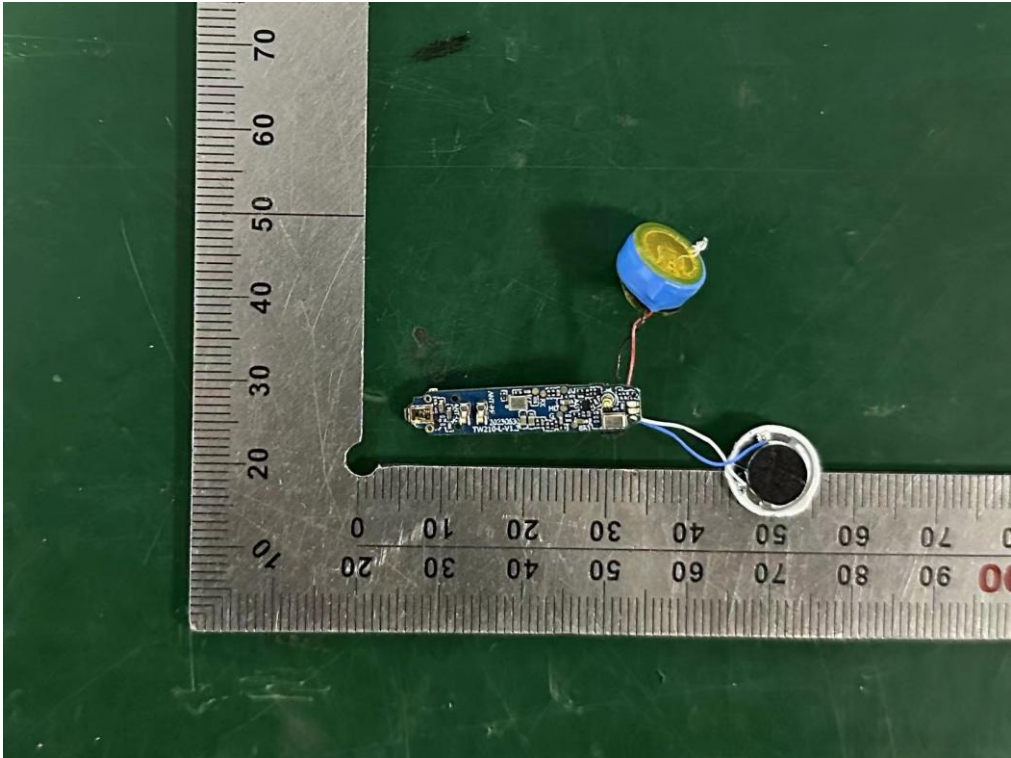


Left Earbuds

Internal Photos
M/N: TW210

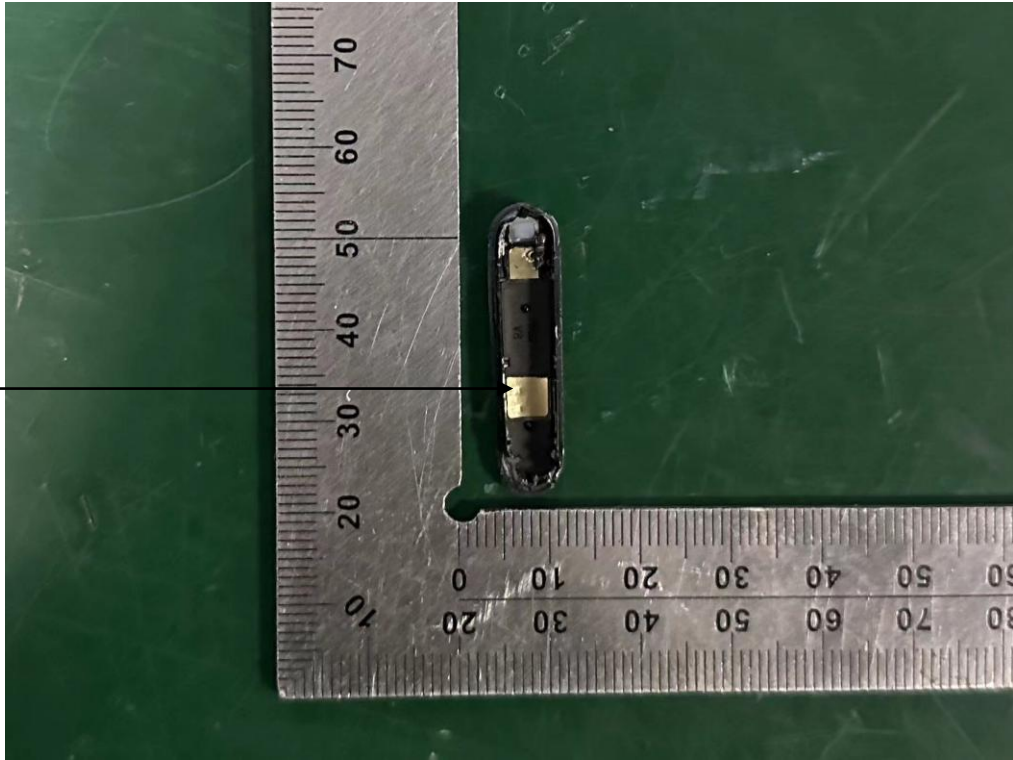


Internal Photos
M/N: TW210



Internal Photos
M/N: TW210

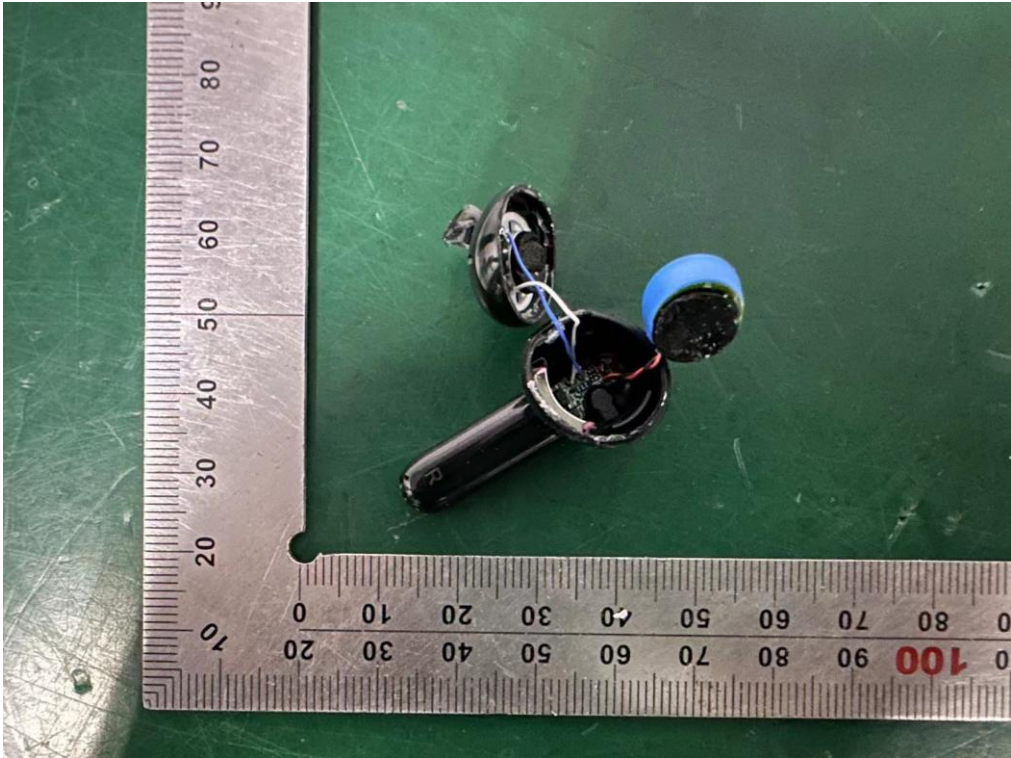
Bluetooth
Antenna



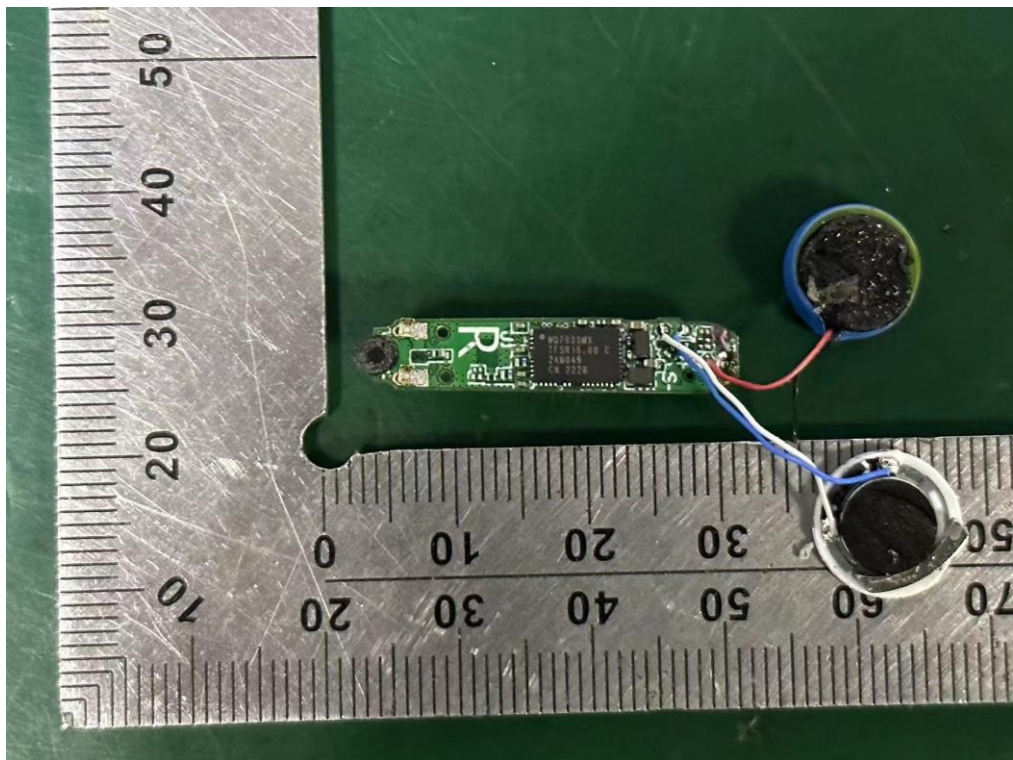
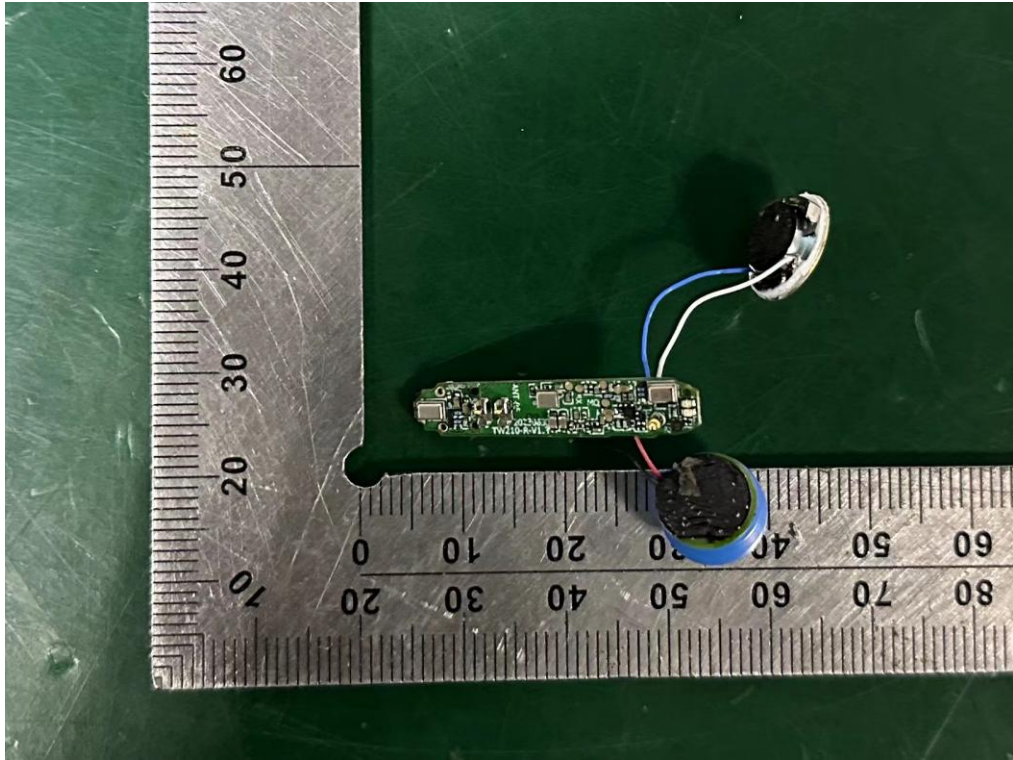
Right Earbuds



Internal Photos
M/N: TW210



Internal Photos
M/N: TW210



End of Test Report