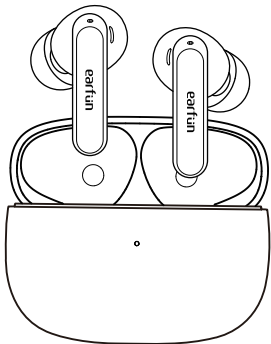


earfun

EarFun Air 2

True Wireless Earbuds



BC

User Manual

English	01
日本語	12
Deutsch	23
Español	34
Polski	45
繁體中文	56

1 EarFun Audio App

Download the EarFun Audio app for an enhanced experience.

- Equalizer tuning, customizing touch controls
- Firmware updates, earbuds and charging case battery status
- Less data tracking, personalized device name
- Built-in feedback, and more

EarFun Audio



Download on the
Google Play

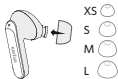


Download on the
App Store



Please update your earbuds firmware to the latest version via the EarFun Audio App for the best user experience. If earbuds can't connect to the app, reinstall or update the app in the app store.

2 How to Fit



XS
S
M
L



1. Choose the best-sized ear tip

2. Insert

3. Rotate

Note:

1. Please choose the suitable ear tip for the best sound and secure fit.
2. Select the left or right earbud and insert to the corresponding ear.
3. Rotate the earbud back and forth for the ear tip to create a comfortable seal.

3 What's in the Box

EarFun Air 2



Charging Case



Ear Tips (XS, S, M, L)



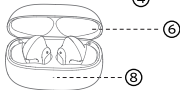
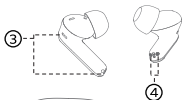
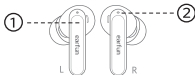
USB-C Cable



User Manual



4 Product Diagram



- ① Touch control zone
- ② Earbuds LED indicator
- ③ Microphone
- ④ Charging contactors
- ⑤ USB-C charging port
- ⑥ Charging case
- ⑦ Charging case button
- ⑧ Battery level indicators

5 Pairing Your Earbuds

1. First-time Pairing with Device

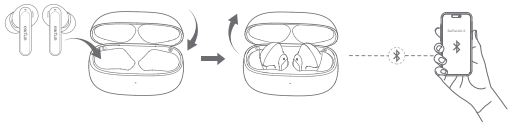
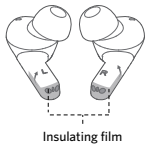
Step 1. Remove the insulating film on both earbuds.

Step 2. Put both earbuds back into the charging case and close the charging case.

Step 3: Open the charging case, and the earbuds will automatically power on and enter into pairing mode.

Step 4: Activate Bluetooth on your Bluetooth-enabled device and search for other Bluetooth devices.

Step 5: Select "EarFun Air 2" from the list of Bluetooth devices shown (if a password is needed, type '0000').



Notes:

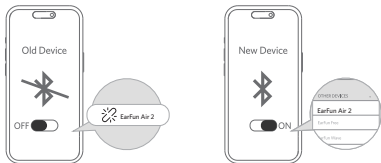
- The earbuds will automatically connect with the previously paired device when the case is open.
- Each earbud could be used independently.

2. Connect to a New Device

Option A

Step 1. Unpair the earbuds from the Bluetooth-enabled device that's connected. The earbuds will disconnect from the current device and go into pairing mode to be paired again.

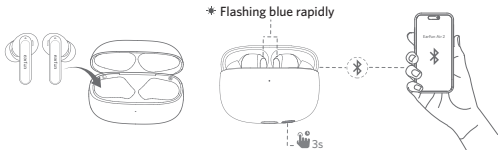
Step 2. Search on the new device and connect.



Option B

Step 1. Put both earbuds back into the charging case and make sure they are being charged, keep the cover open and then press and hold the charging case button for 3 seconds until the LED indicators on earbuds start flashing blue rapidly.

Step 2. Search on the new device and connect.



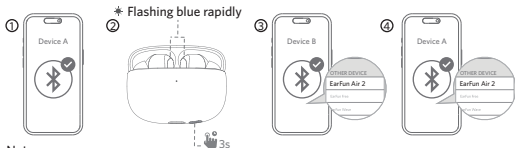
3. Pairing and Connecting two Bluetooth devices simultaneously

Step1. Pair with the first device and stay connected

Step2. Keep the earbuds in the charging case, then press and hold the charging case button for 3 seconds until the LED indicator on earbuds flash blue rapidly. The earbuds will enter pairing mode and will disconnected from the first device.

Step3. Search on the second device to connect the earbuds.

Step4. Manually reconnect the earbuds on the first device.



Note:

- The earbuds will automatically connect to both devices after finishing setting up the multipoint connection.

6 Functions

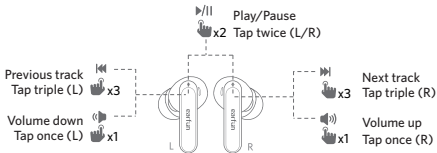
- Open the charging case, the earbuds will automatically power on.
- Place the earbuds back into the charging case and close the case, then the earbuds will automatically power off.



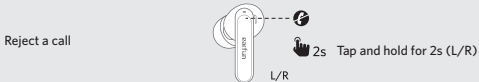
Note:

- If the earbuds are not connected to any device, they will automatically power off after 10 minutes for saving the battery life.

Playing music

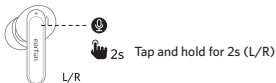



Hands free conversation



Activate the voice assistant

Voice assistant



 Game Mode: Please enable in EarFun Audio app

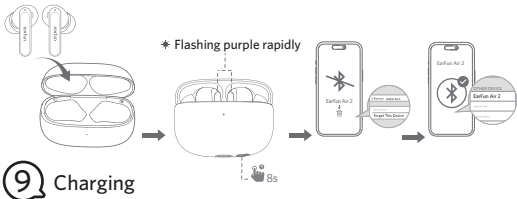
Earbuds LED Indicator

Power on	Blue indicator flashes for 1s
Power off	Red indicator flashes for 1s
Pairing mode	Indicator flashes blue
Successfully connected	Indicator turns off
Factory reset	Indicator flashes in purple

Reset and Reconnecting

If you fail to establish a connection between two earbuds or between the earbuds and Bluetooth devices, please try the following steps:

1. Put both earbuds into the charging case.
2. Keep the charging case open, then press and hold the button on the case for at least 8s until both earbuds flash purple. The earbuds have been reset successfully.
3. Delete the previous connection from the Bluetooth device and reactivate Bluetooth to reconnect "EarFun Air 2".



9 Charging

1. Dry the earbuds, charging contactors and USB port completely before charging.
2. Open or close the charging case to activate the case battery level LED indicator.
3. Put earbuds back into the charging case and the earbuds will start charging.
4. Fully charge both the earbuds and the charging case before first use.



Battery level :


Green	30%-100%
Orange	10%-30%
Red	<10% Please charge

Wireless charging supported (Wireless charging pad not included)



Red - Charging
Green - Charging complete

10 Specifications

Bluetooth version	V5.3
Bluetooth frequency	2.402GHz-2.480GHz
Bluetooth profile	A2DP, AVRCP, HFP, HSP
Bluetooth transmitted power	<7dBm (for EU)
Maximum working range	15m(without obstacle)
Battery capacity	40mAh x 2(earbuds); 400mAh(charging case)
Charging time	1 hour(for earbuds) 2 hours(for charging case via USB-C) 3.5 hours(for charging case via wireless charger)
Playtime	Up to 7.5 hours, Totally 33 hours with the charging case (varies by volume level and audio content)
Input	5V  1A
Dimensions	62.1mm x 47.5mm x 25mm
Weight	45g

11 Troubleshooting

Q: Can I use both earphones separately?

A: Yes, each earbud can be used independently.

Q: The earphones are turning on, but it doesn't connect to my device?

A: To connect the earbuds to your device, please ensure the insulating films on both earbuds were removed first, then check if the Bluetooth is enabled. If the earbuds still don't connect to your device, please perform a reset or contact our customer support.

Q: Why is the connection not stable and cuts out intermittently?

A: Please make sure there are no objects between the earphones and your Bluetooth device and make sure there is no radio or WIFI interference nearby.

Q: What is the range of Bluetooth earphones?

A: Bluetooth earphones have maximum range of 49 feet (15m, no obstacle). However, the actual range will depend on usage and environment.

Q: Is there volume control on the earphones?

A: Yes, 1x tap on the left earbud decreases the volume and 1x tap on the right earbud increases it.

Q: My earphones will not switch on.

A: Please recharge them and make sure they have enough battery power. If they are fully charged and still nothing happens or if you are not able to charge them, please contact our customer support.

Q: Is the charging case waterproof?

A: No, the earbuds are sweat and waterproof but the charging case is not.

Q: Will the earbuds shut off automatically?

A: The earbuds will stay on as long as they are connected to a device. If no audio is playing, they will enter power-saving mode and wake up once audio playback resumes. If the earbuds are not connected to any devices they will automatically power off after 10 minutes.

Customer Service

For FAQs and more information:

Please send an email to: service@myearfun.com

www.myearfun.com

FCC Statement

Changes or modifications not expressly approved by the party responsible for compliance could void the user's authority to operate the equipment.

This equipment has been tested and found to comply with the limits for a Class B digital device, pursuant to Part 15 of the FCC Rules. These limits are designed to provide reasonable protection against harmful interference in a residential installation. This equipment generates uses and can radiate radio frequency energy and, if not installed and used in accordance with the instructions, may cause harmful interference to radio communications.

However, there is no guarantee that interference will not occur in a particular installation. If this equipment does cause harmful interference to radio or television reception, which can be determined by turning the equipment off and on, the user is encouraged to try to correct the interference by one or more of the following measures:

- Reorient or relocate the receiving antenna.
- Increase the separation between the equipment and receiver.
- Connect the equipment into an outlet on a circuit different from that to which the receiver is connected.
- Consult the dealer or an experienced radio/TV technician for help.

This device complies with part 15 of the FCC rules. Operation is subject to the following two conditions:

- (1) This device may not cause harmful interference.
- (2) This device must accept any interference received, including interference that may cause undesired operation.

RF Exposure Compliance

This equipment complies with FCC radiation exposure limits set forth for an uncontrolled environment. This transmitter must not be co-located or operating in conjunction with any other antenna or transmitter.

CAUTION

Risk of explosion if the battery is replaced by an incorrect type

Disposal of a battery into fire or a hot even, or mechanically crushing or cutting of a battery, that can result in an explosion;

Leaving a battery in an extremely high temperature surrounding environment that can result in an explosion or the leakage of flammable liquid or gas;

A battery subjected to extremely low air pressure that may result in an explosion or the leakage of flammable liquid or gas.



To prevent possible hearing damage, do not listen at high volume levels for long periods.

BLUETOOTH

The Bluetooth word mark and logos are registered trademarks owned by Bluetooth SIG, Inc. and any use of such marks by Earfun Technology (HK) Limited is under license.

Other trademarks and trade names are those of their respective owners.

EU Declaration of Conformity

Earfun Technology (HK) Limited hereby declares that this equipment is in compliance with the essential requirements and other relevant provisions of Directive 2014/53/EU and RoHS 2011/65/EU Directive. The declaration of conformity may be consulted in the support section of our Web site, accessible from www.myearfun.com

UK Declaration of Conformity

Hereby, [Earfun Technology (HK) Limited] declares that the radio equipment type [TW210] is in compliance with UK Radio Equipment Regulations (SI 2017/1206). The full text of the declaration of conformity is available at the following internet address: www.myearfun.com

NCC聲明：

取得審驗證明之低功率射頻器材，非經核准，公司、商號或使用者均不得擅自變更頻率、加大功率或變更原設計之特性及功能。低功率射頻器材之使用不得影響飛航安全及干擾合法通信；經發現有干擾現象時，應立即停用，並改善至無干擾時方得繼續使用。前述合法通信，指依電信管理法規定作業之無線電通信。低功率射頻器材須忍受合法通信或工業、科學及醫療用電波輻射性電機設備之干擾。

ISED Compliance Statements

This device contains licence-exempt transmitter(s)/receiver(s) that comply with Innovation, Science and Economic Development Canada's licence-exempt RSS(s). Operation is subject to the following two conditions:

(1) This device may not cause interference.

(2) This device must accept any interference, including interference that may cause undesired operation of the device.

This equipment complies with IC RSS-102 radiation exposure limits set forth for an uncontrolled environment.

L'émetteur/récepteur exempt de licence contenu dans le présent appareil est conforme aux CNR d'Innovation, Sciences et Développement économique Canada applicables aux appareils radio exempts de licence. L'exploitation est autorisée aux deux conditions suivantes :

(1) L'appareil ne doit pas produire de brouillage;

(2) L'appareil doit accepter tout brouillage radioélectrique subi, même si le brouillage est susceptible d'en compromettre le fonctionnement.

Cet équipement est conforme aux limites d'exposition aux radiations IC CNR-102 établies pour un environnement non contrôlé.

型號/MODEL: TW210

FCC ID: 2AVIT-TW210

HVIN: TW210

IC: 25936-TW210



® 210-218081