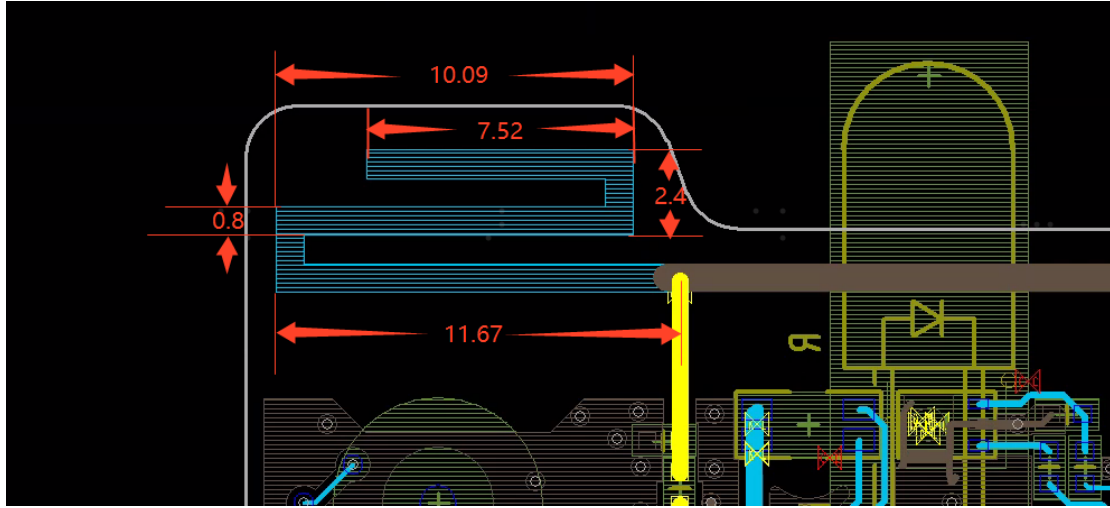


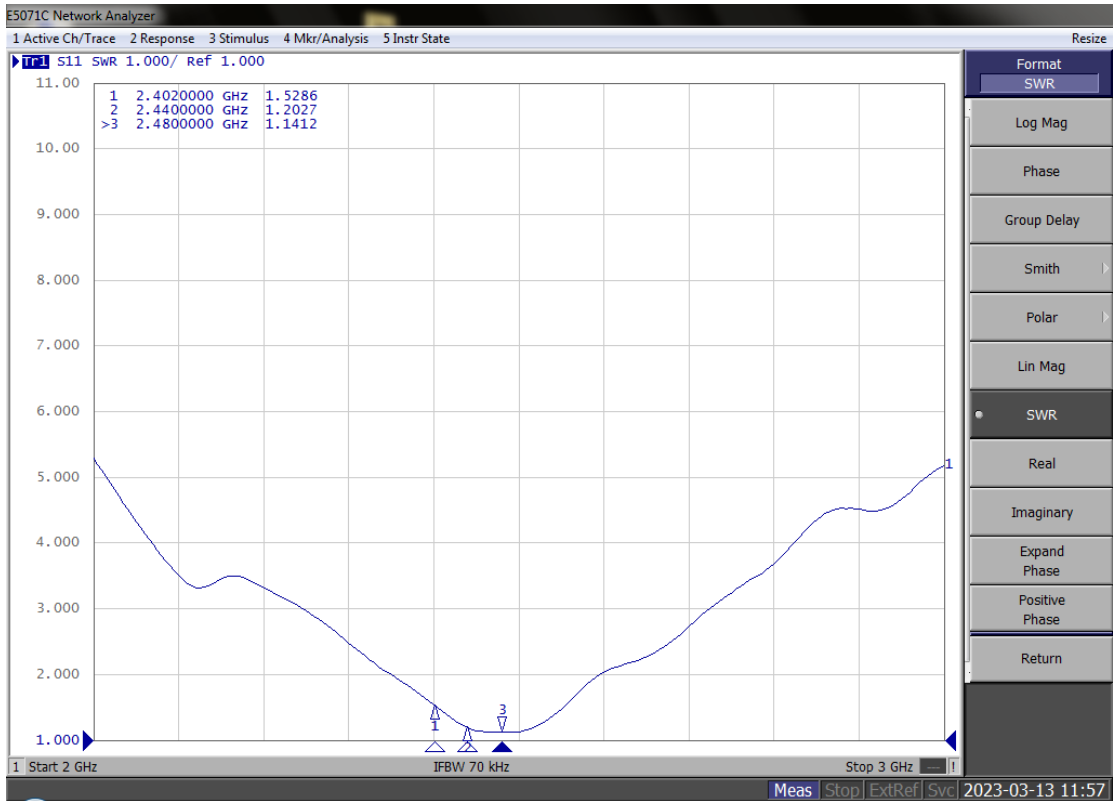
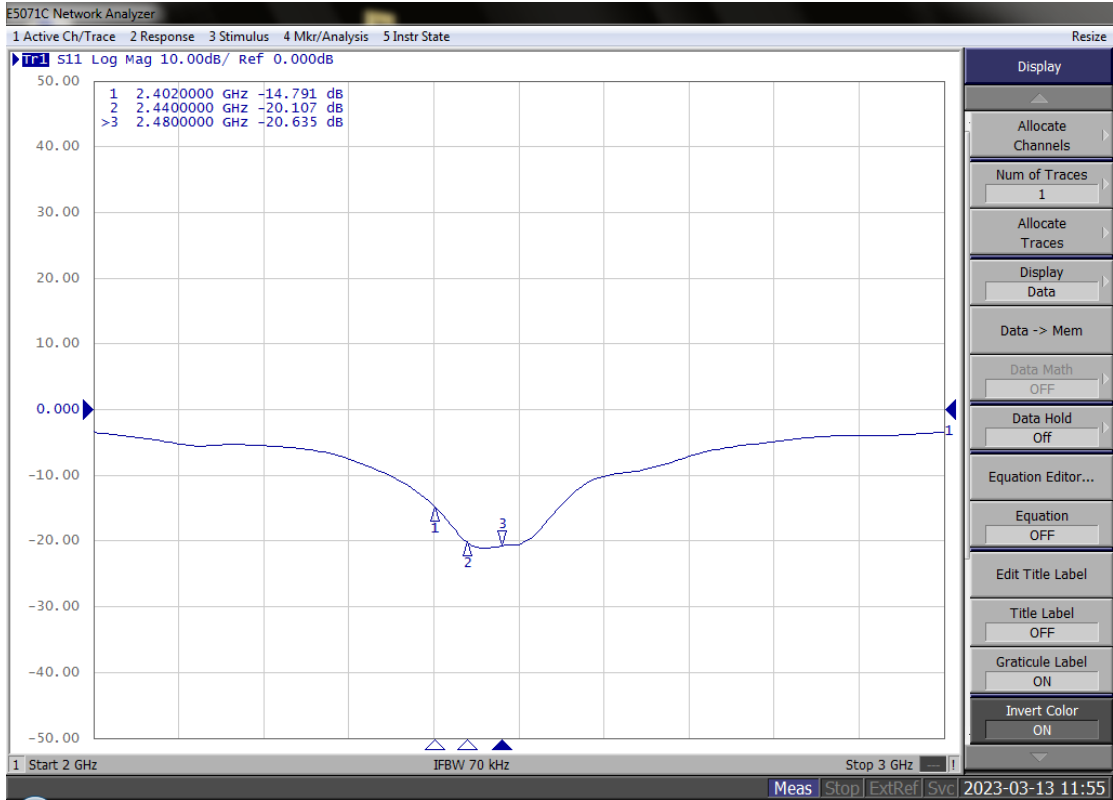
ERF2C36H 天线规格

Antenna size:



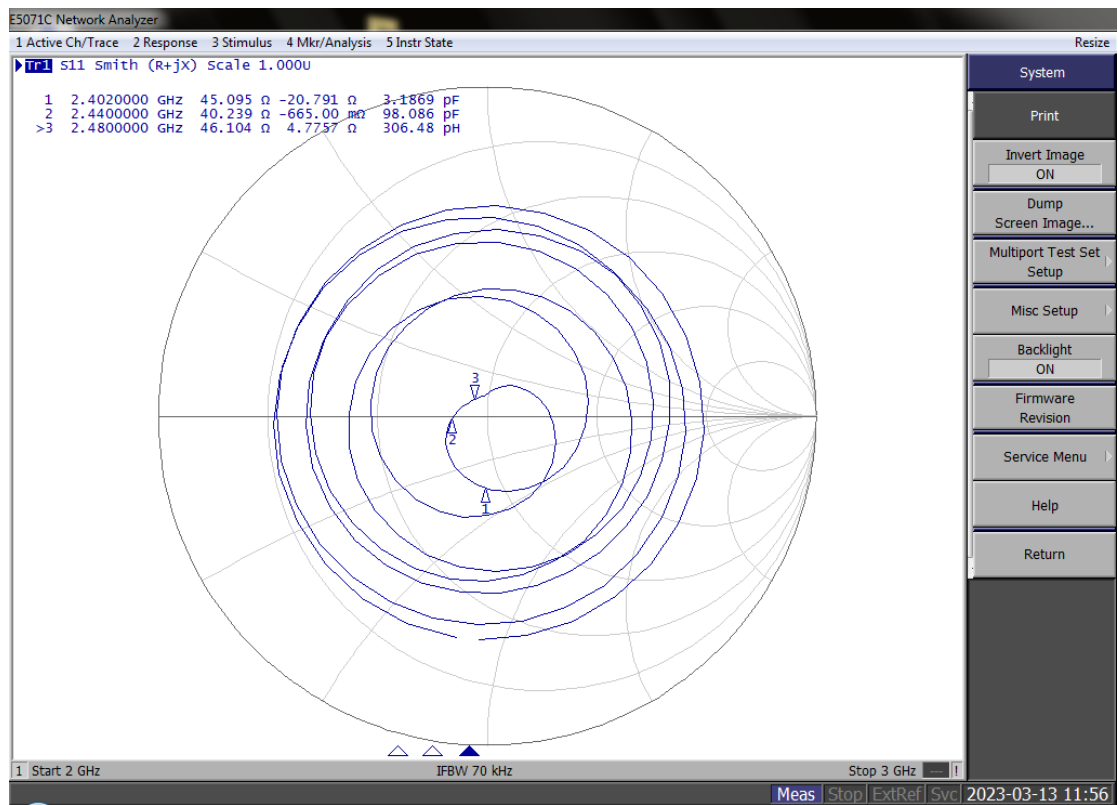
NO	details	SPC	remark
1	Frequency band	2400-2500MHz	
2	directivity	Omnidirectional antenna	
3	Input impedance	50 Ohm Nominal	
4	Return Loss	-14dB(max)	
5	VSWR	2 (max)	
6	Polarization mode	Linear Polarization	
7	Gain	-0.28dBi(max)	
8	Efficiency	39.9% (max)	

Test instrument: E5071 Network Analyzer



Frequency /MHz	2402	2440	2480
VSWR	1.5286	1.2027	1.1412

Return Loss /dB	-14. 791	-20. 107	-20. 635
-----------------	----------	----------	----------



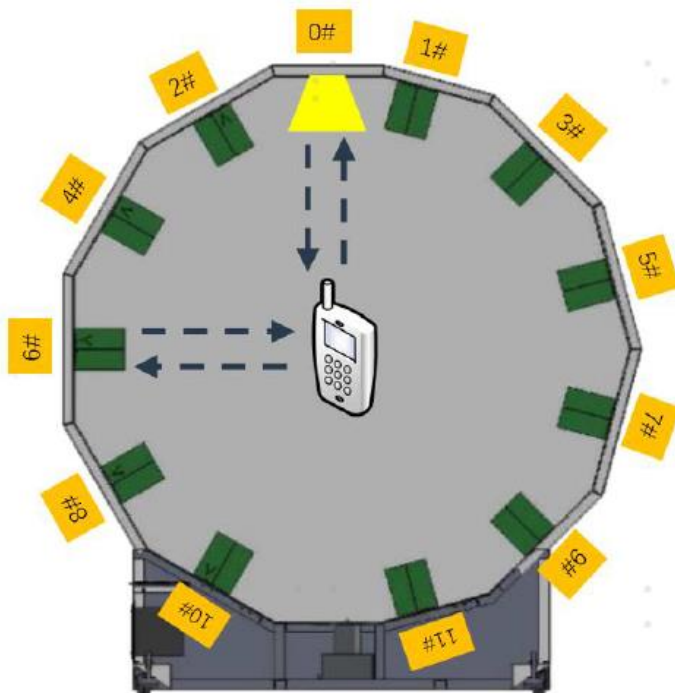
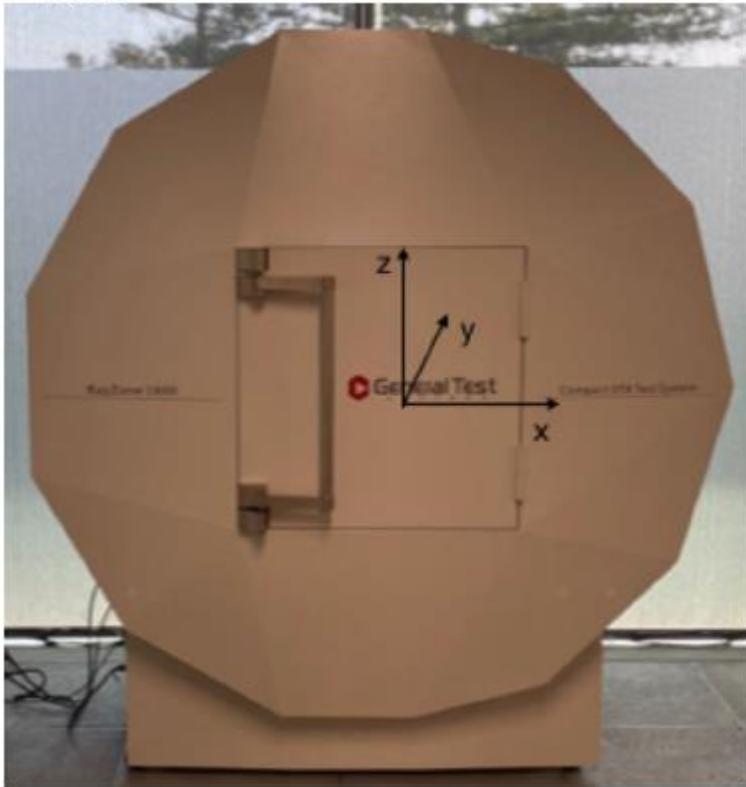
3D pattern:

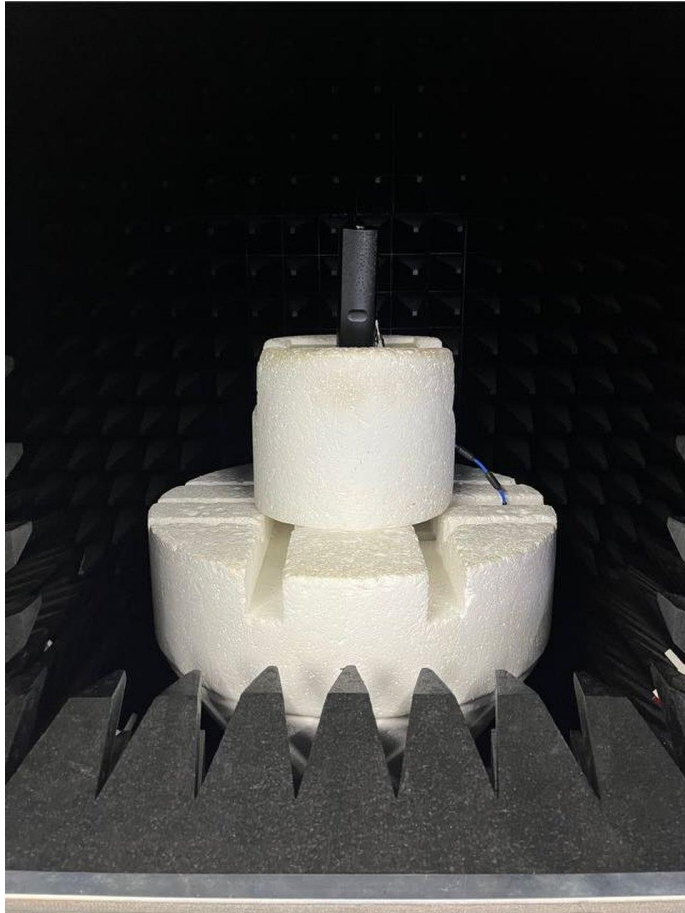
OTA Test system: RayZone1800,

Qingdao Hisense Mobile Communication Technology,Inc.

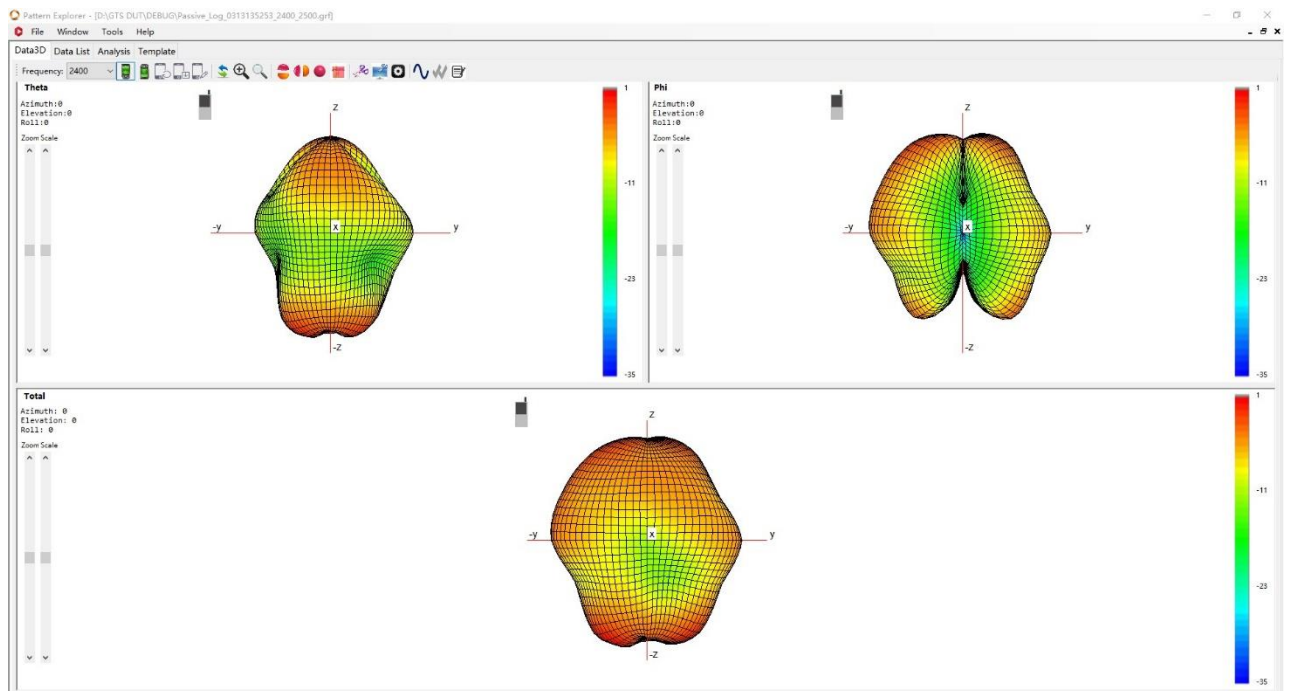
Address: No.399, Song Ling Road, Qingdao,China



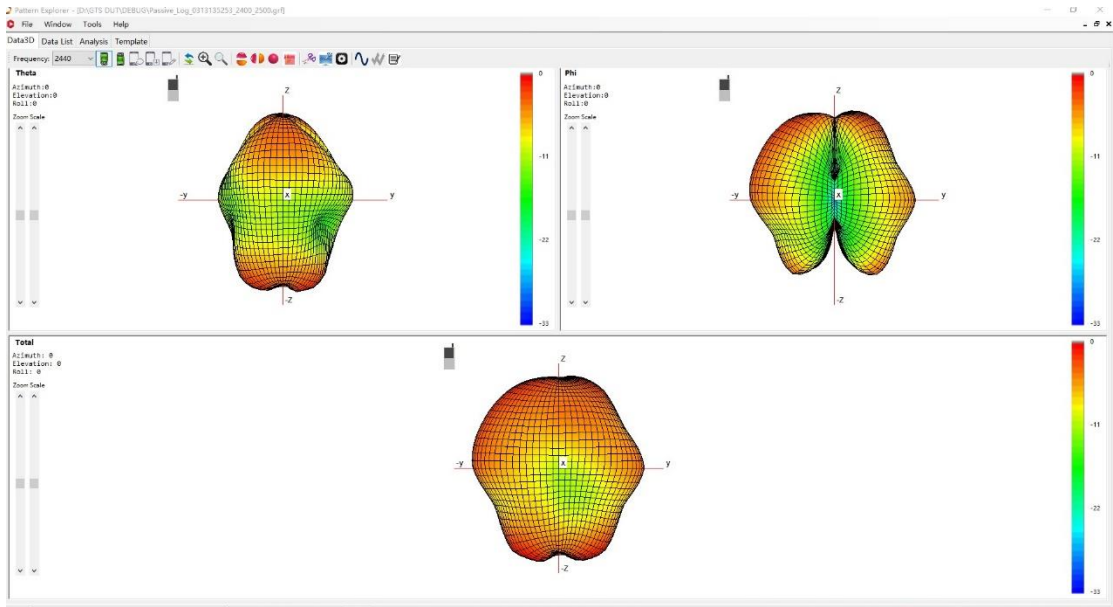




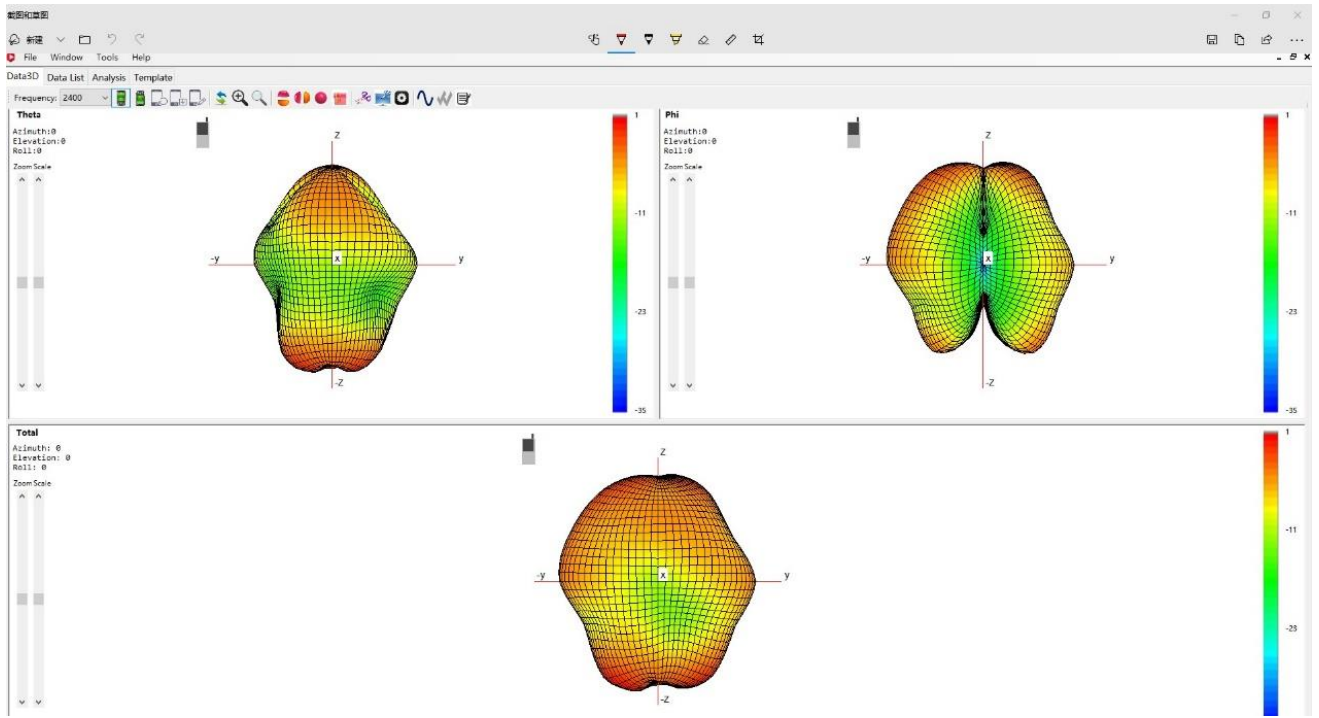
3D Pattern-2400MHz



3D Pattern-2440MHz



3D Pattern-2480MHz



Freq	Efficiency_dB	Gain	Directivity	Efficiency_Pcent
2400	-4.375130909	-0.353733295	4.021397614	36.516312
2410	-4.373706242	-0.353616653	4.120089589	36.52829284
2420	-4.654130742	-0.42766405	4.226466692	34.24419219
2430	-4.671968344	-0.528949998	4.143018346	34.10383085
2440	-4.336131066	-0.47116122	3.864969846	36.84570693
2450	-4.186849915	-0.316880409	3.869969506	38.13423236
2460	-4.053766001	-0.4149344	3.638831601	39.32089549
2470	-3.986293803	-0.383138764	3.773155039	39.93655689
2480	-4.027395962	-0.282768452	4.050164414	39.56037537
2490	-4.07238659	-0.30754527	4.379931859	39.15266613
2500	-4.079045708	-0.454471365	4.533517072	39.09267862