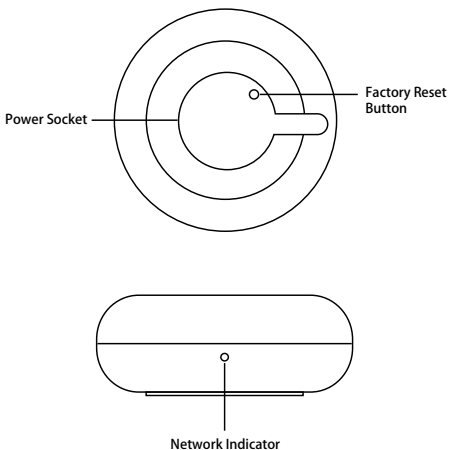


Wi-Fi Smart Infrared Universal Remote Control

Model: C068



Technical Specifications	
Input voltage	DC5V / 1A
Wi-Fi Frequency	2.4GHz
Wireless Standard	IEEE802.11 b/g/n
Infrared Standard	38KHz
Infrared Distance	≤8m(affected by the environment)

- Users can design and implement intelligent application scenarios for general appliances in the home by adding a universal remote control.
- Only works with the IR device.

1

2

1.1 Download 『BOAZ Smart』 APP



Scan the QR code, and download 『BOAZ Smart』 APP.

You can also search it at App Store or Google Play to install the APP.

3

APP Connection Steps

1.2 Register your account at 『BOAZ Smart』 APP

『BOAZ Smart』 APP

- Open 『BOAZ Smart』 APP, select 「register」 to create your account. Select country/area code and enter your email address or mobile phone number, then set the password.
- Please note:
 - (1) If you register via email address, you will not receive verification code. Just enter your password to log in.
 - (2) If you register via mobile phone number, you will receive verification code before setting your password.
 - (3) If you need to use Amazon Alexa, Siri and Google Home for voice control, we suggest the registration is completed via email address or mobile phone number.



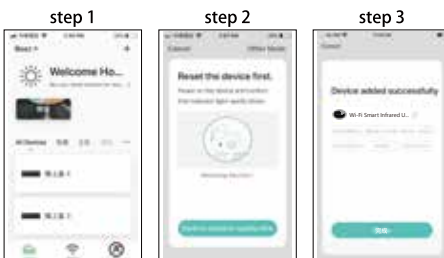
After successfully adding the device, you can share the device with your friends or family and enjoy more convenient features.



4

1.3 Add device

- Simple mode

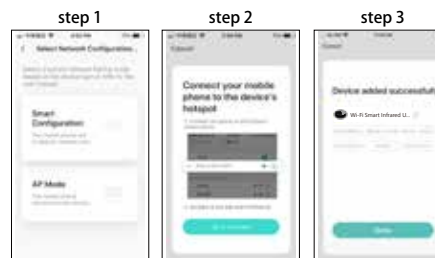


Tap 「Add device」 → Select the device you want to add → Press the Factory Reset Button for 5 seconds and make sure the indicator is flashing fast → Enter Wi-Fi name and password → Follow the APP steps → Mobile phone and device are connected successfully → 「Add device is complete」 is shown on APP list → You can control smart devices through the APP of mobile phone.

※ If the device cannot be added successfully, please go back to the connection page and re-enter your home Wi-Fi account and password.

5

- AP mode



Same as Simple Mode → Tap upper right corner 「Compatibility mode」 → 「Make sure the indicator is flashing slowly」 → Wi-Fi password → Connect 「SmartLife_XXXX」 → Mobile phone and device are connected successfully → 「Add device is complete」 → You can control the devices through the APP.

6

Please read the manual carefully before using the product.

2020.03

Manufacturer: BOAZ Smart CO., LTD.
Customer Service Phone Number: 886-4-25357755
Company Address: No. 41, Heping RD., Tanzi Dist., Taichung City, 42746 Taiwan, R.O.C

7

FCC Warning:

This equipment has been tested and found to comply with the limits for a Class B digital device, pursuant to part 15 of the FCC Rules. These limits are designed to provide reasonable protection against harmful interference in a residential installation. This equipment generates, uses and can radiate radio frequency energy and, if not installed and used in accordance with the instructions, may cause harmful interference to radio communications. However, there is no guarantee that interference will not occur in a particular installation. If this equipment does cause harmful interference to radio or television reception, which can be determined by turning the equipment off and on, the user is encouraged to try to correct the interference by one or more of the following measures:

- Reorient or relocate the receiving antenna.
- Increase the separation between the equipment and receiver.
- Connect the equipment into an outlet on a circuit different from that to which the receiver is connected.
- Consult the dealer or an experienced radio/TV technician for help.

Caution: Any changes or modifications to this device not explicitly approved by manufacturer could void your authority to operate this equipment.

This device complies with part 15 of the FCC Rules. Operation is subject to the following two conditions:

(1) This device may not cause harmful interference, and (2) this device must accept any interference

received, including interference that may cause undesired operation.

This equipment complies with FCC radiation exposure limits set forth for an uncontrolled environment. This equipment should be installed and operated with minimum distance 20cm between the radiator and your body.