



FCC Test Report

**Test report
On Behalf of
SHENZHEN JINGWEIXIAN TECHNOLOGY CO.,LTD
For
Photo Printer
Model No.: DHP511
FCC ID: 2AVGR-DHP511**

Prepared For : SHENZHEN JINGWEIXIAN TECHNOLOGY CO.,LTD
Building C, XinHang Technology Park, No. 229 Qingshui Road, Longgang District
Shenzhen, 518116 China

Prepared By : Shenzhen HUAK Testing Technology Co., Ltd.
1-2/F., Building B2, Junfeng Zhongcheng Zhizao Innovation Park, Heping,
Fuhai Street, Bao'an District, Shenzhen, Guangdong, China

Date of Test: Oct. 07, 2023 ~ Oct. 31, 2023

Date of Report: Oct. 31, 2023

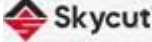
Report Number: HK2310074547-3E



Test Result Certification

Applicant's name : SHENZHEN JINGWEIXIAN TECHNOLOGY CO.,LTD
Address..... : Building C, XinHang Technology Park, No. 229 Qingshui Road, Longgang District Shenzhen, 518116 China
Manufacture's Name : SHENZHEN JINGWEIXIAN TECHNOLOGY CO.,LTD
Address..... : Building C, XinHang Technology Park, No. 229 Qingshui Road, Longgang District Shenzhen, 518116 China


Product description

Trade Mark:  Skycut
Product name : Photo Printer
Model and/or type reference : DHP511


Standards..... : FCC Rules and Regulations Part 15 Subpart E Section 15.407
 ANSI C63.10: 2013

This publication may be reproduced in whole or in part for non-commercial purposes as long as the Shenzhen HUAK Testing Technology Co., Ltd. is acknowledged as copyright owner and source of the material. Shenzhen HUAK Testing Technology Co., Ltd. takes no responsibility for and will not assume liability for damages resulting from the reader's interpretation of the reproduced material due to its placement and context.


Date of Test :
Date (s) of performance of tests..... : **Oct. 07, 2023 ~ Oct. 31, 2023**
Date of Issue : **Oct. 31, 2023**
Test Result : **Pass**

Testing Engineer : 

 (Gary Qian)

Technical Manager : 

 (Eden Hu)

Authorized Signatory : 

 (Jason Zhou)

The results shown in this test report refer only to the sample(s) tested unless otherwise stated and the sample(s) are retained for 30 days only. The document is issued by HUAK, this document cannot be reproduced except in full with our prior written permission. The more details and the authenticity of the report will be confirmed at <http://www.cer-mark.com>.



Table of Contents

- 1. Test Result Summary 5**
 - 1.1. Test Procedures and Results..... 5
 - 1.2. Information of the Test Laboratory 5
 - 1.3. Measurement Uncertainty 6
- 2. EUT Description 7**
 - 2.1. General Description of EUT 7
 - 2.2. Operation Frequency Each of Channel..... 8
 - 2.3. Operation of EUT During Testing 8
 - 2.4. Description of Test Setup..... 9
 - 2.5. Description of Support Units 10
- 3. Genera Information 11**
 - 3.1. Test Environment and Mode 11
- 4. Test Results and Measurement Data 15**
 - 4.1. Conducted Emission..... 15
 - 4.2. Maximum Conducted Output Power 19
 - 4.3. 6DB Emission Bandwidth..... 22
 - 4.4. 26DB Bandwidth and 99% Occupied Bandwidth 29
 - 4.5. Power Spectral Density 30
 - 4.6. Band Edge..... 37
 - 4.7. Spurious Emission..... 52
 - 4.8. Frequency Stability Measurement..... 66
 - 4.9. Antenna Requirement..... 68
- 5. Photographs of Test Setup 69**
- 6. Photos of the EUT 71**



**** Modified History ****

Revision	Description	Issued Data	Remark
Revision 1.0	Initial Test Report Release	Oct. 31, 2023	Jason Zhou



1. Test Result Summary

1.1. Test Procedures and Results

Requirement	CFR 47 Section	Result
Antenna requirement	§15.203	PASS
AC Power Line Conducted Emission	§15.207	PASS
Maximum Conducted Output Power	§15.407(a)	PASS
6dB Emission Bandwidth	§15.407(e)	PASS
26dB Emission Bandwidth & 99% Occupied Bandwidth	§15.407(a)	N/A
Power Spectral Density	§15.407(a)	PASS
Band edge	§15.407(b)/15.209/15.205	PASS
Radiated Emission	§15.407(b)/15.209/15.205	PASS
Frequency Stability	§15.407(g)	PASS

Note:

1. PASS: Test item meets the requirement.
2. Fail: Test item does not meet the requirement.
3. N/A: Test case does not apply to the test object.
4. The test result judgment is decided by the limit of test standard.

1.2. Information of the Test Laboratory

Shenzhen HUAK Testing Technology Co., Ltd.
 Add.: 1-2/F., Building B2, Junfeng Zhongcheng Zhizao Innovation Park, Heping,
 Fuhai Street, Bao'an District, Shenzhen, Guangdong, China

Testing Laboratory Authorization:

A2LA Accreditation Code is 4781.01.
 FCC Designation Number is CN1229.
 Canada IC CAB identifier is CN0045.
 CNAS Registration Number is L9589.



1.3. Measurement Uncertainty

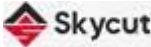
The reported uncertainty of measurement $y \pm U$, where expanded uncertainty U is based on a standard uncertainty multiplied by a coverage factor of $k=2$, providing a level of confidence of approximately 95 %.

No.	Item	MU
1	Conducted Emission	$\pm 0.37\text{dB}$
2	RF power, conducted	$\pm 3.35\text{dB}$
3	Spurious emissions, conducted	$\pm 2.20\text{dB}$
4	All emissions, radiated(<1G)	$\pm 3.90\text{dB}$
5	All emissions, radiated(>1G)	$\pm 4.28\text{dB}$
6	Temperature	$\pm 0.1^\circ\text{C}$
7	Humidity	$\pm 1.0\%$



2. EUT Description

2.1. General Description of EUT

Equipment:	Photo Printer
Model Name:	DHP511
Serial Model:	N/A
Model Difference:	N/A
Trade Mark:	
FCC ID:	2AVGR-DHP511
Operation Frequency:	IEEE 802.11a/n/ac (HT20)5.745GHz-5.825GHz IEEE 802.11n/ac (HT40)5.755GHz-5.795GHz IEEE 802.11ac (HT80) 5.775GHz
Modulation Technology:	IEEE 802.11a/n/ac
Modulation Type:	OFDM, OFDMA
Antenna Type:	PCB Antenna
Antenna Gain:	-1.6dBi
Power Source:	DC 24V From Adapter
Power Supply:	DC 24V From Adapter



2.2. Operation Frequency Each of Channel

802.11a/802.11n(HT20)/ 802.11ac(HT20)		802.11n(HT40)/ 802.11ac(HT40)		802.11ac(HT80)	
Channel	Frequency	Channel	Frequency	Channel	Frequency
149	5745	151	5755	155	5775
153	5765	159	5795		
157	5785				
161	5805				
165	5825				

Note:

In section 15.31(m), regards to the operating frequency range over 10 MHz, the Lowest frequency, the middle frequency, and the highest frequency of channel were selected to perform the test, and the selected channel see below:

2.3. Operation of EUT During Testing

Band IV (5725 - 5850 MHz)		
For 802.11a/n/ac (HT20)		
Channel Number	Channel	Frequency (MHz)
149	Low	5745
157	Mid	5785
165	High	5825

For 802.11n/ac (HT40)		
Channel Number	Channel	Frequency (MHz)
151	Low	5755
159	High	5795

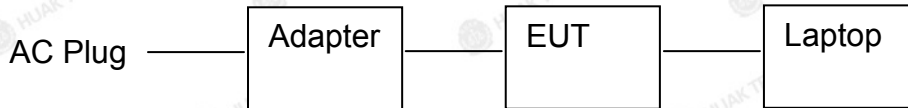
For 802.11ac(HT80)		
Channel Number	Channel	Frequency (MHz)
155	/	5775

The results shown in this test report refer only to the sample(s) tested unless otherwise stated and the sample(s) are retained for 30 days only. The document is issued by HUAK, this document cannot be reproduced except in full with our prior written permission. The more details and the authenticity of the report will be confirmed at <http://www.cer-mark.com>.

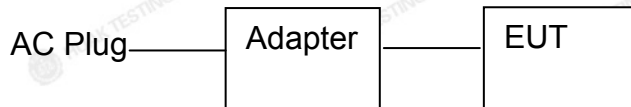


2.4. Description of Test Setup

Operation of EUT during conducted testing and below 1GHz radiation testing:



Operation of EUT during radiation testing:




The sample was placed (0.8m below 1GHz, 1.5m above 1GHz) above the ground plane of 3m chamber. Measurements in both horizontal and vertical polarities were performed. During the test, each emission was maximized by: having the EUT continuously working, investigated all operating modes, rotated about all 3 axis (X, Y & Z) and considered typical configuration to obtain worst position, manipulating interconnecting cables, rotating the turntable, varying antenna height from 1m to 4m in both horizontal and vertical polarizations. The emissions worst-case are shown in Test Results of the following pages. The worst case is X position.



2.5. Description of Support Units

The EUT has been tested as an independent unit together with other necessary accessories or support units. The following support units or accessories were used to form a representative test configuration during the tests.

Item	Equipment	Trade Mark	Model/Type No.	Specification	Remark
1	Photo Printer	 Skycut	DHP511	N/A	EUT
2	Adapter	N/A	BLJ38W240160P-T	Input: 100-240V, 50/60Hz, 1.0A Output: 24V, 1.6A	Accessory
3	Laptop	Lenovo	TP00096A	Input: DC 20V, 2.25A/3.25A	Peripheral
4	RF Cable	N/A	N/A	Length:0.1m	Peripheral

Note:

1. All the equipment/cables were placed in the worst-case configuration to maximize the emission during the test.
2. Grounding was established in accordance with the manufacturer's requirements and conditions for the intended use.
3. For conducted measurements (Output Power, 6dB Emission Bandwidth, Power Spectral Density, Spurious Emissions), the antenna of EUT is connected to the test equipment via temporary antenna connector, the antenna connector is soldered on the antenna port of EUT, and the temporary antenna connector is listed in the Test Instruments.



3. Genera Information

3.1. Test Environment and Mode

Operating Environment:	
Temperature:	25.0 °C
Humidity:	56 % RH
Atmospheric Pressure:	1010 mbar
Test Mode:	
Engineering mode:	Keep the EUT in continuous transmitting by select channel and modulations
<p>The sample was placed 0.8m/1.5m for blow/above 1GHz above the ground plane of 3m chamber. Measurements in both horizontal and vertical polarities were performed. During the test, each emission was maximized by: having the EUT continuously working, investigated all operating modes, rotated about all 3 axis (X, Y & Z) and considered typical configuration to obtain worst position, manipulating interconnecting cables, rotating the turntable, varying antenna height from 1m to 4m in both horizontal and vertical polarizations. The emissions worst-case are shown in Test Results of the following pages.</p>	





We have verified the construction and function in typical operation. All the test modes were carried out with the EUT in transmitting operation, which was shown in this test report and defined as follows:

Per-scan all kind of data rate in lowest channel, and found the follow list which it was worst case.

Mode	Data rate
802.11a	6 Mbps
802.11n/ac(HT20)	MCS0
802.11n/ac(HT40)	MCS0
802.11ac(HT80)	MCS0

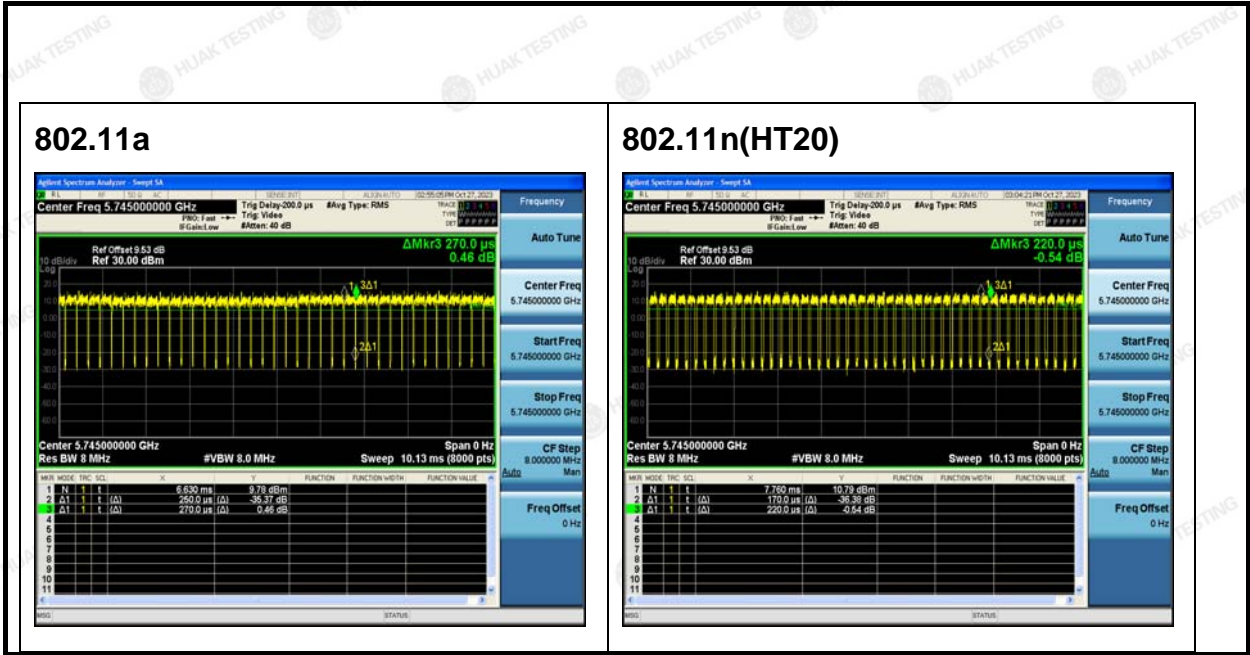
Final Test Mode:

Operation mode:	Keep the EUT in continuous transmitting with modulation
-----------------	---

Mode Test Duty Cycle:

Mode	Duty Cycle	Duty Cycle Factor (dB)
802.11a	0.93	-0.32
802.11n(HT20)	0.77	-1.14
802.11n(HT40)	0.57	-2.44
802.11ac(HT20)	0.67	-1.74
802.11ac(HT40)	0.52	-2.84
802.11ac(HT80)	0.41	-3.87

Test plots as follows:



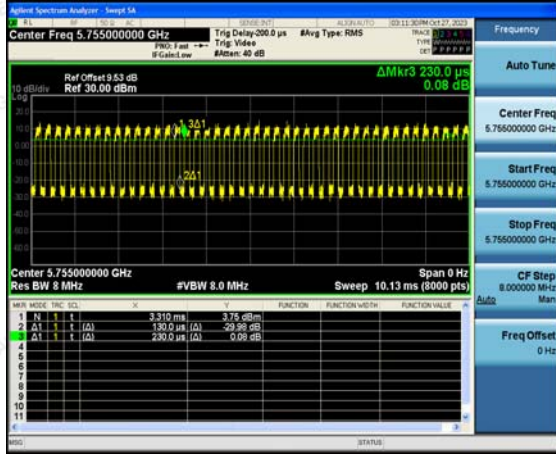
The results shown in this test report refer only to the sample(s) tested unless otherwise stated and the sample(s) are retained for 30 days only. The document is issued by HUAJ, this document cannot be reproduced except in full with our prior written permission. The more details and the authenticity of the report will be confirmed at <http://www.cer-mark.com>.

TEL : +86-755 2302 9901 FAX : +86-755 2302 9901 E-mail : service@cer-mark.com

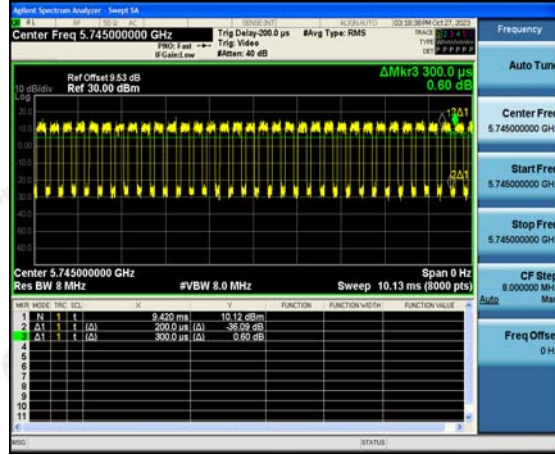
Add: 1-2F., Building B2, Junfeng Zhongcheng Zhizao Innovation Park, Heping Community, Fuhai Street, Bao'an District, Shenzhen, Guangdong, China



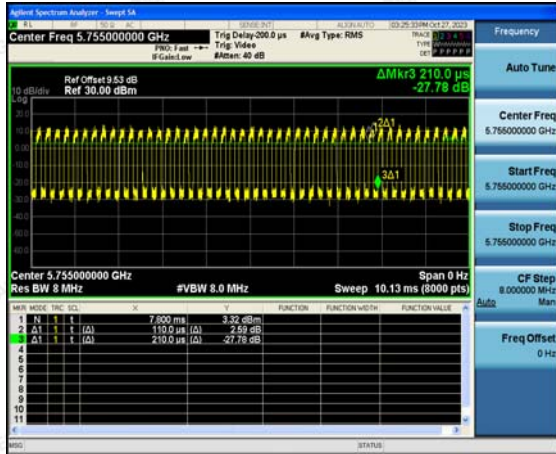
802.11n(HT40)



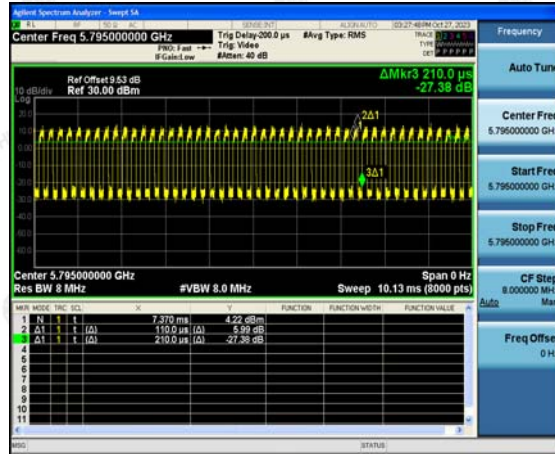
802.11ac(HT20)



802.11ac(HT40)



802.11ac(HT80)



The results shown in this test report refer only to the sample(s) span unless otherwise stated and the sample(s) are retained for 30 days only. The document is issued by HUAJ, this document cannot be reproduced except in full with our prior written permission. The more details and the authenticity of the report will be confirmed at <http://www.cer-mark.com>.

TEL : +86-755 2302 9901 FAX : +86-755 2302 9901 E-mail : service@cer-mark.com

Add: 1-2F., Building B2, Junfeng Zhongcheng Zhizao Innovation Park, Heping Community, Fuhai Street, Bao'an District, Shenzhen, Guangdong, China



4. Test Results and Measurement Data

4.1. Conducted Emission

4.1.1. Test Specification

Test Requirement:	FCC Part15 C Section 15.207														
Test Method:	ANSI C63.10:2013														
Frequency Range:	150 kHz to 30 MHz														
Receiver setup:	RBW=9 kHz, VBW=30 kHz, Sweep time=auto														
Limits:	<table border="1"> <thead> <tr> <th rowspan="2">Frequency range (MHz)</th> <th colspan="2">Limit (dBuV)</th> </tr> <tr> <th>Quasi-peak</th> <th>Average</th> </tr> </thead> <tbody> <tr> <td>0.15-0.5</td> <td>66 to 56*</td> <td>56 to 46*</td> </tr> <tr> <td>0.5-5</td> <td>56</td> <td>46</td> </tr> <tr> <td>5-30</td> <td>60</td> <td>50</td> </tr> </tbody> </table>	Frequency range (MHz)	Limit (dBuV)		Quasi-peak	Average	0.15-0.5	66 to 56*	56 to 46*	0.5-5	56	46	5-30	60	50
	Frequency range (MHz)		Limit (dBuV)												
		Quasi-peak	Average												
	0.15-0.5	66 to 56*	56 to 46*												
0.5-5	56	46													
5-30	60	50													
Test Setup:	<p>Remark E.U.T: Equipment Under Test LISN: Line Impedance Stabilization Network Test table height=0.8m</p>														
Test Mode:	Tx Mode														
Test Procedure:	<ol style="list-style-type: none"> The E.U.T and simulators are connected to the main power through a line impedance stabilization network (L.I.S.N.). This provides a 50ohm/50uH coupling impedance for the measuring equipment. The peripheral devices are also connected to the main power through a LISN that provides a 50ohm/50uH coupling impedance with 50ohm termination. (Please refer to the block diagram of the test setup and photographs). Both sides of A.C. line are checked for maximum conducted interference. In order to find the maximum emission, the relative positions of equipment and all of the interface cables must be changed according to ANSI C63.10: 2013 on conducted measurement. 														
Test Result:	PASS														

The results shown in this test report refer only to the sample(s) tested unless otherwise stated and the sample(s) are retained for 30 days only. The document is issued by HUAKE, this document cannot be reproduced except in full with our prior written permission. The more details and the authenticity of the report will be confirmed at <http://www.cer-mark.com>.



4.1.2. Test Instruments

Conducted Emission Shielding Room Test Site (843)					
Equipment	Manufacturer	Model	Serial Number	Calibration Date	Calibration Due
Receiver	R&S	ESR-7	HKE-010	Feb. 17, 2023	Feb. 16, 2024
LISN	R&S	ENV216	HKE-002	Feb. 17, 2023	Feb. 16, 2024
Coax cable (9KHz-30MHz)	Times	381806-002	N/A	Feb. 17, 2023	Feb. 16, 2024
10dB Attenuator	Schwarzbeck	VTSD9561 F	HKE-153	Feb. 17, 2023	Feb. 16, 2024
Conducted test software	Tonscend	TS+ Rev 2.5.0.0	HKE-081	N/A	N/A

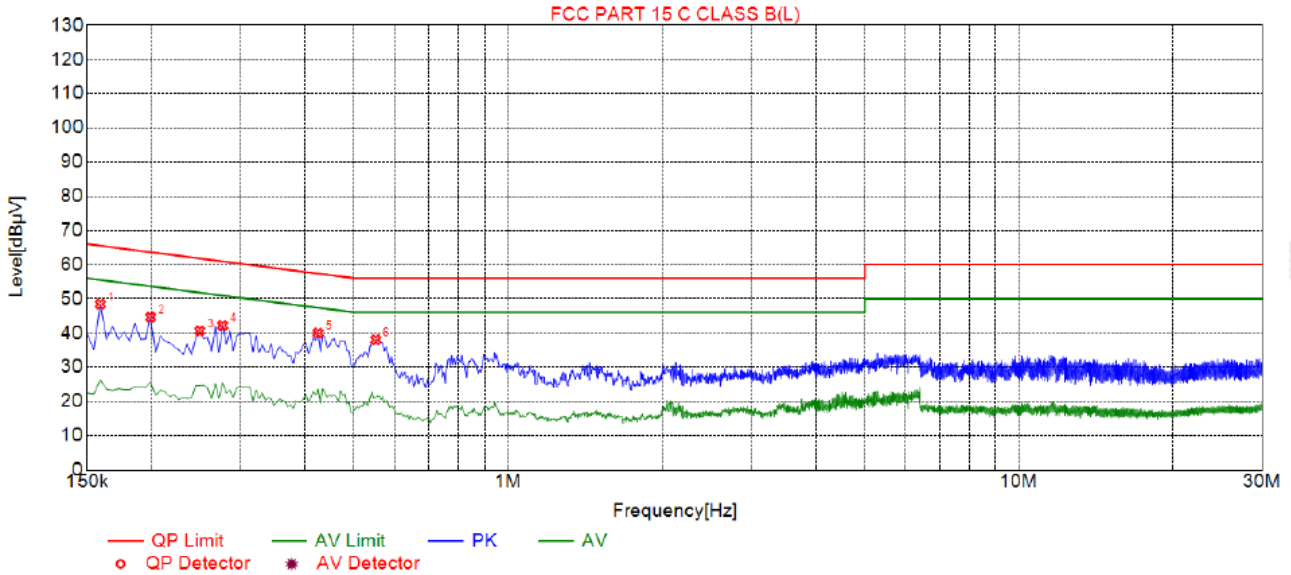
Note: The calibration interval of the above test instruments is 12 months and the calibrations are traceable to international system unit (SI).



4.1.3. Test data

Remark: All the test modes completed for test. only the worst result of 802. 11a was reported as below:

Test Specification: Line

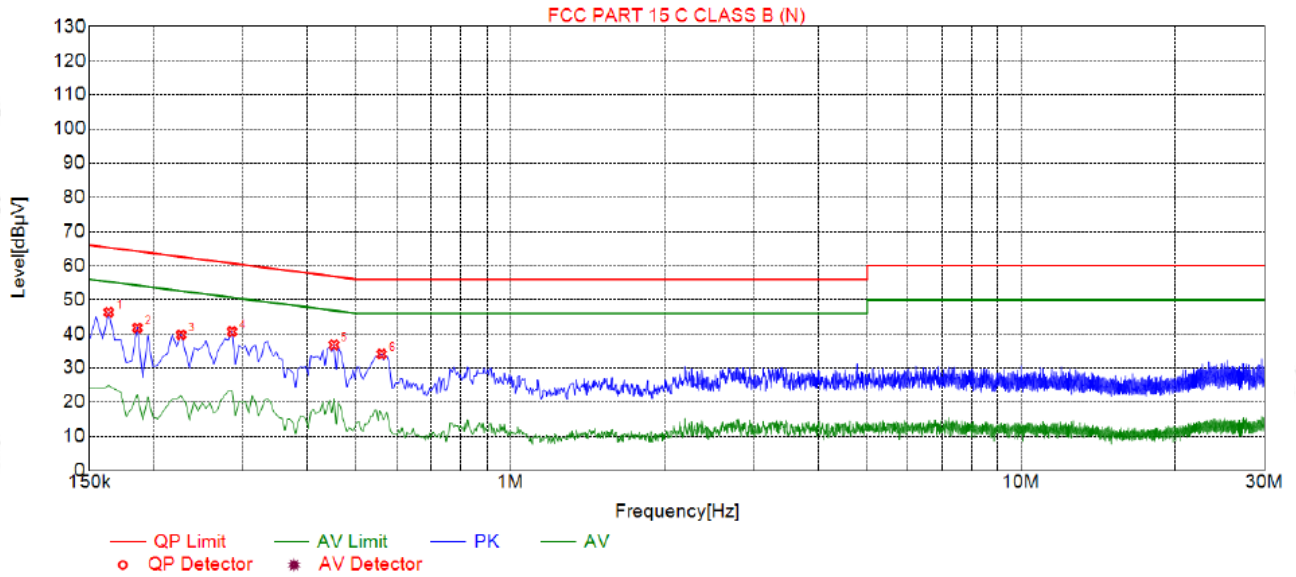


Suspected List								
NO.	Freq. [MHz]	Level [dBµV]	Factor [dB]	Limit [dBµV]	Margin [dB]	Reading [dBµV]	Detector	Type
1	0.1590	48.41	20.01	65.62	17.21	27.40	PK	L
2	0.1995	44.64	20.03	63.65	19.01	23.61	PK	L
3	0.2490	40.63	20.04	61.82	21.19	19.59	PK	L
4	0.2760	42.21	20.04	61.04	18.83	21.17	PK	L
5	0.4245	39.99	20.04	57.39	17.40	18.95	PK	L
6	0.5505	38.00	20.06	56.00	18.00	16.94	PK	L

Remark: Margin = Limit - Level
 Correction factor = Cable lose + LISN insertion loss
 Level=Test receiver reading + correction factor



Test Specification: Neutral



Suspected List								
NO.	Freq. [MHz]	Level [dBµV]	Factor [dB]	Limit [dBµV]	Margin [dB]	Reading [dBµV]	Detector	Type
1	0.1635	46.34	19.98	65.44	19.10	25.36	PK	N
2	0.1860	41.78	20.05	64.26	22.48	20.73	PK	N
3	0.2265	39.75	20.03	62.69	22.94	18.72	PK	N
4	0.2850	40.68	20.04	60.73	20.05	19.64	PK	N
5	0.4515	36.80	20.04	56.86	20.06	15.76	PK	N
6	0.5595	34.09	20.06	56.00	21.91	13.03	PK	N

Remark: Margin = Limit - Level
 Correction factor = Cable lose + LISN insertion loss
 Level=Test receiver reading + correction factor



4.2. Maximum Conducted Output Power

4.2.1. Test Specification

Test Requirement:	FCC Part15 E Section 15.407(a)				
Test Method:	KDB789033 D02 General UNII Test Procedures New Rules v02.r01 Section E				
Limit:	<table border="1"><tr><th>Frequency Band (MHz)</th><th>Limit</th></tr><tr><td>5725-5850</td><td>1 W</td></tr></table>	Frequency Band (MHz)	Limit	5725-5850	1 W
	Frequency Band (MHz)	Limit			
5725-5850	1 W				
Test Setup:	<p>The diagram illustrates the test setup. On the left is a green rectangular box labeled "Power meter" with two ports. A cable connects one of these ports to a small white square labeled "Attenuator". Another cable connects the attenuator to a yellow rectangular box labeled "EUT" (Equipment Under Test) which has a single port.</p>				
Test Mode:	Transmitting mode with modulation				
Test Procedure:	<ol style="list-style-type: none">1. The testing follows the Measurement Procedure of KDB789033 D02 General UNII Test Procedures New Rules v02r01 Section E, 3, a.2. The RF output of EUT was connected to the power meter by RF cable and attenuator. The path loss was compensated to the results for each measurement.3. Set to the maximum power setting and enable the EUT transmit continuously.4. Measure the conducted output power and record the results in the test report.				
Test Result:	PASS				
Remark:	Conducted output power= measurement power +10log(1/x) X is duty cycle=1, so 10log(1/1)=0 Conducted output power= measurement power				



4.2.2. Test Instruments

RF Test Room					
Equipment	Manufacturer	Model	Serial Number	Calibration Date	Calibration Due
Spectrum analyzer	Agilent	N9020A	HKE-048	Feb. 17, 2023	Feb. 16, 2024
Power meter	Agilent	E4419B	HKE-085	Feb. 17, 2023	Feb. 16, 2024
Power Sensor	Agilent	E9300A	HKE-086	Feb. 17, 2023	Feb. 16, 2024
RF cable	Times	1-40G	HKE-034	Feb. 17, 2023	Feb. 16, 2024
RF automatic control unit	Tonscend	JS0806-2	HKE-060	Feb. 17, 2023	Feb. 16, 2024

Note: The calibration interval of the above test instruments is 12 months and the calibrations are traceable to international system unit (SI).




Test Data

Configuration Band IV (5725 - 5850 MHz)				
Mode	Test channel	Maximum Conducted Output Power (dBm)	FCC Limit (dBm)	Result
11a	CH149	8.08	30	PASS
11a	CH157	8.52	30	PASS
11a	CH165	11.24	30	PASS
11n HT20	CH149	8.94	30	PASS
11n HT20	CH157	9.11	30	PASS
11n HT20	CH165	10.43	30	PASS
11n HT40	CH151	9.68	30	PASS
11n HT40	CH159	10.46	30	PASS
11ac HT20	CH149	8.89	30	PASS
11ac HT20	CH157	9.26	30	PASS
11ac HT20	CH165	10.30	30	PASS
11ac HT40	CH151	9.80	30	PASS
11ac HT40	CH159	10.19	30	PASS
11ac HT80	CH155	8.53	30	PASS
Note: 1.The test results including the cable lose.				

4.3. 6DB Emission Bandwidth

4.3.1. Test Specification

Test Requirement:	FCC CFR47 Part 15 Section 15.407(e)
Test Method:	KDB789033 D02 General UNII Test Procedures New Rules v01r04 Section C
Limit:	>500kHz
Test Setup:	 <p style="text-align: center;">Spectrum Analyzer EUT</p>
Test Mode:	Transmitting mode with modulation
Test Procedure:	<ol style="list-style-type: none"> 1. KDB789033 D02 General UNII Test Procedures New Rules v02r01 Section C. 2. Set to the maximum power setting and enable the EUT transmit continuously. 3. Make the measurement with the spectrum analyzer's resolution bandwidth (RBW) = 100 kHz. Set the Video bandwidth (VBW) = 300 kHz. In order to make an accurate measurement. The 6dB bandwidth must be greater than 500 kHz. 4. Measure and record the results in the test report.
Test Result:	PASS

4.3.2. Test Instruments

RF Test Room					
Equipment	Manufacturer	Model	Serial Number	Calibration Date	Calibration Due
Spectrum analyzer	Agilent	N9020A	HKE-048	Feb. 17, 2023	Feb. 16, 2024
RF cable	Times	1-40G	HKE-034	Feb. 17, 2023	Feb. 16, 2024
RF automatic control unit	Tonscend	JS0806-2	HKE-060	Feb. 17, 2023	Feb. 16, 2024

Note: The calibration interval of the above test instruments is 12 months and the calibrations are traceable to international system unit (SI).



4.3.3. Test data

Band IV (5725 - 5850 MHz)					
Mode	Test channel	Frequency (MHz)	6 dB Bandwidth (MHz)	Limit (MHz)	Result
11a	CH149	5745	16.28	0.5	PASS
11a	CH157	5785	16.24	0.5	PASS
11a	CH161	5825	16.28	0.5	PASS
11n(HT20)	CH149	5745	17.64	0.5	PASS
11n(HT20)	CH157	5785	17.60	0.5	PASS
11n(HT20)	CH161	5825	17.64	0.5	PASS
11n(HT40)	CH151	5755	36.40	0.5	PASS
11n(HT40)	CH159	5795	36.24	0.5	PASS
11ac(HT20)	CH149	5745	17.68	0.5	PASS
11ac(HT20)	CH157	5785	17.64	0.5	PASS
11ac(HT20)	CH165	5825	17.64	0.5	PASS
11ac(HT40)	CH151	5755	36.32	0.5	PASS
11ac(HT40)	CH159	5795	36.40	0.5	PASS
11ac(HT80)	CH155	5775	75.36	0.5	PASS

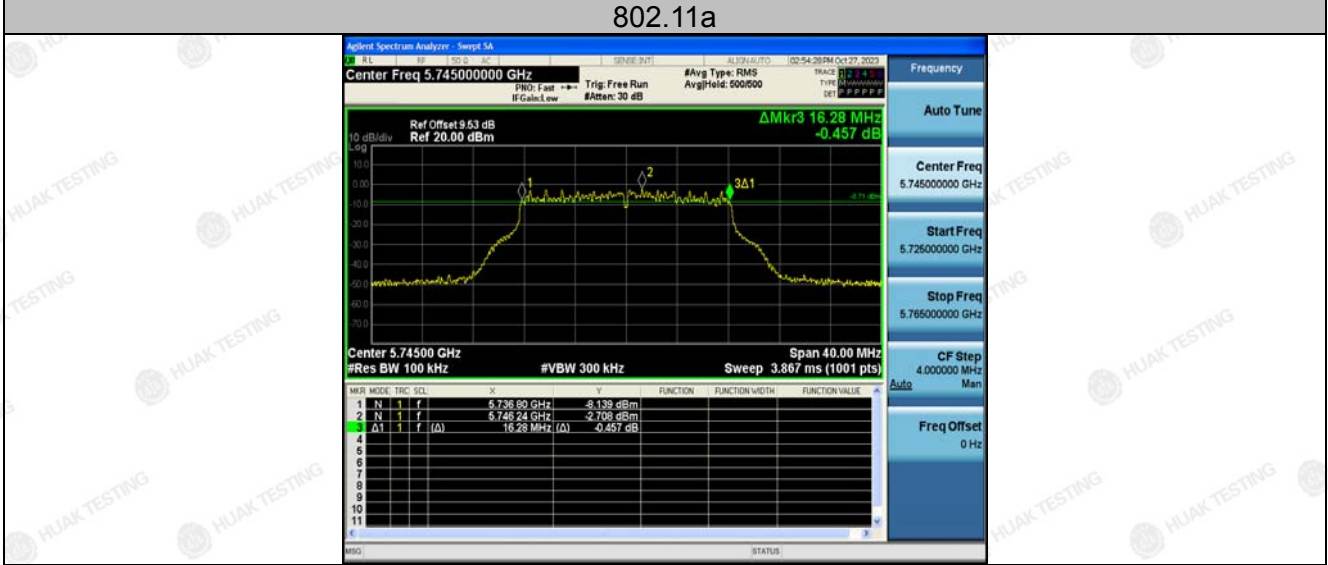
Note: RBW setting for 99% bandwidth is 1%-5% OBW

Test plots as follows:



Band IV (5725 – 5850 MHz)

802.11a



Low



Mid

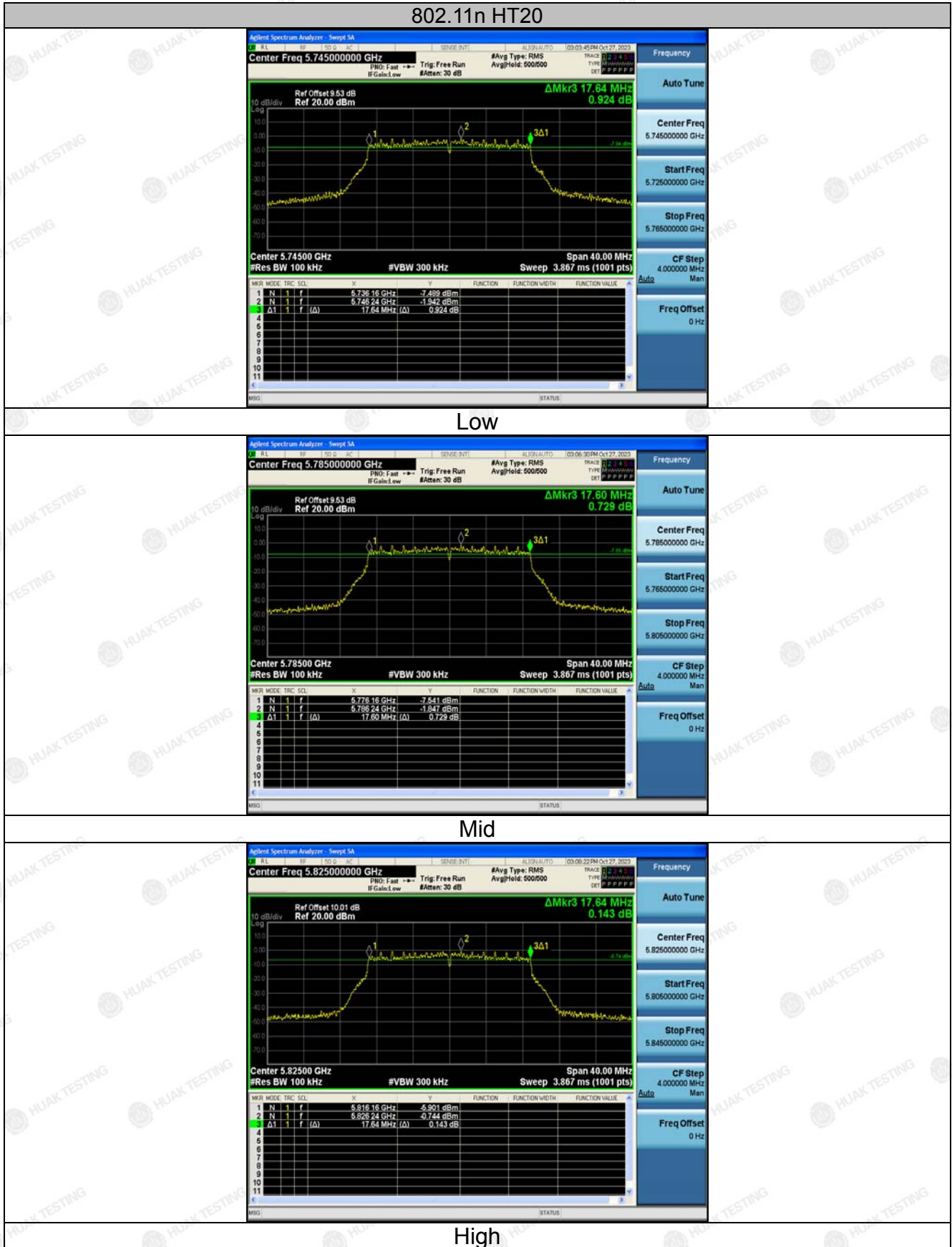


High

The results shown in this test report refer only to the sample(s) tested otherwise stated and the sample(s) are retained for 30 days only. The document is issued by HUAJ, this document cannot be reproduced except in full with our prior written permission. The more details and the authenticity of the report will be confirmed at <http://www.cer-mark.com>.

TEL : +86-755 2302 9901 FAX : +86-755 2302 9901 E-mail : service@cer-mark.com

Add: 1-2F., Building B2, Junfeng Zhongcheng Zhizao Innovation Park, Heping Community, Fuhai Street, Bao'an District, Shenzhen, Guangdong, China



The results shown in this test report refer only to the sample(s) tested unless otherwise stated and the sample(s) are retained for 30 days only. The document is issued by HUAJ, this document cannot be reproduced except in full with our prior written permission. The more details and the authenticity of the report will be confirmed at <http://www.cer-mark.com>.

TEL : +86-755 2302 9901 FAX : +86-755 2302 9901 E-mail : service@cer-mark.com

Add: 1-2F., Building B2, Junfeng Zhongcheng Zhizao Innovation Park, Heping Community, Fuhai Street, Bao'an District, Shenzhen, Guangdong, China



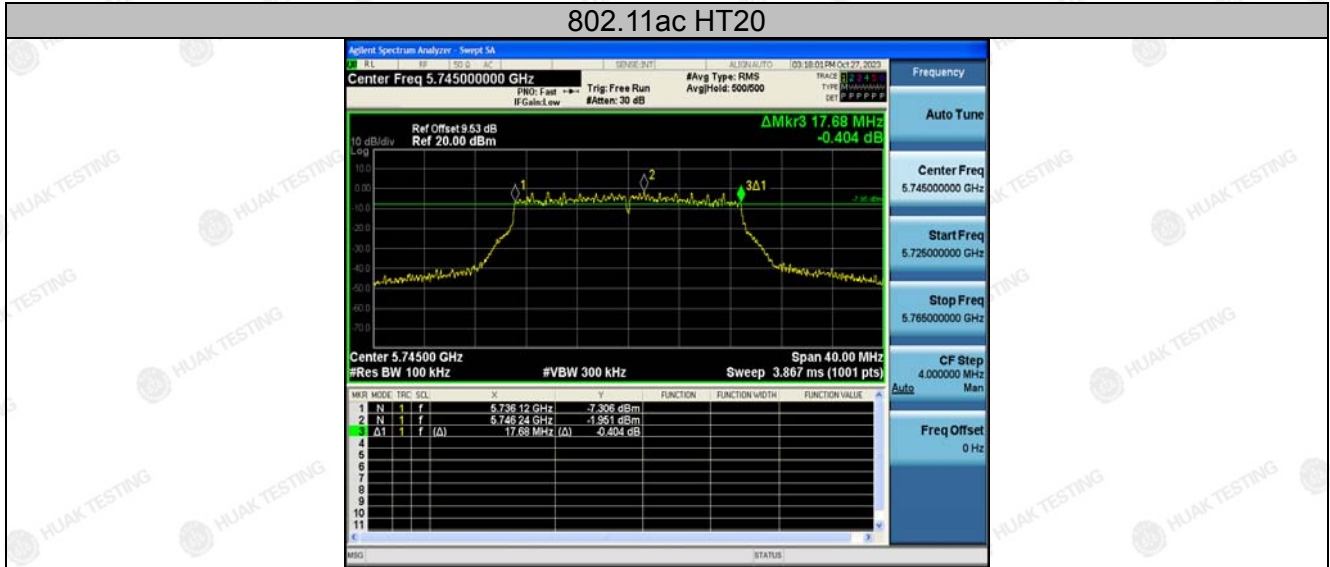
802.11n HT40



Low



High



Low



Mid



High

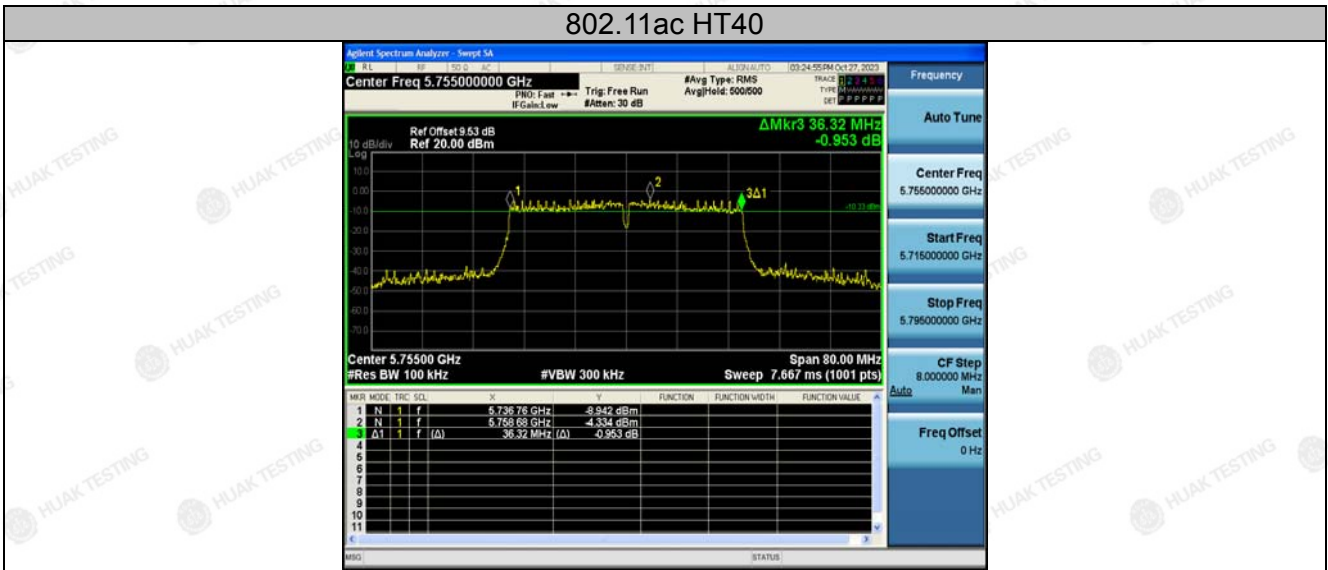
The results shown in this test report refer only to the sample(s) tested unless otherwise stated and the sample(s) are retained for 30 days only. The document is issued by HUAKE, this document cannot be reproduced except in full with our prior written permission. The more details and the authenticity of the report will be confirmed at <http://www.cer-mark.com>.

TEL : +86-755 2302 9901 FAX : +86-755 2302 9901 E-mail : service@cer-mark.com

Add: 1-2F., Building B2, Junfeng Zhongcheng Zhizao Innovation Park, Heping Community, Fuhai Street, Bao'an District, Shenzhen, Guangdong, China



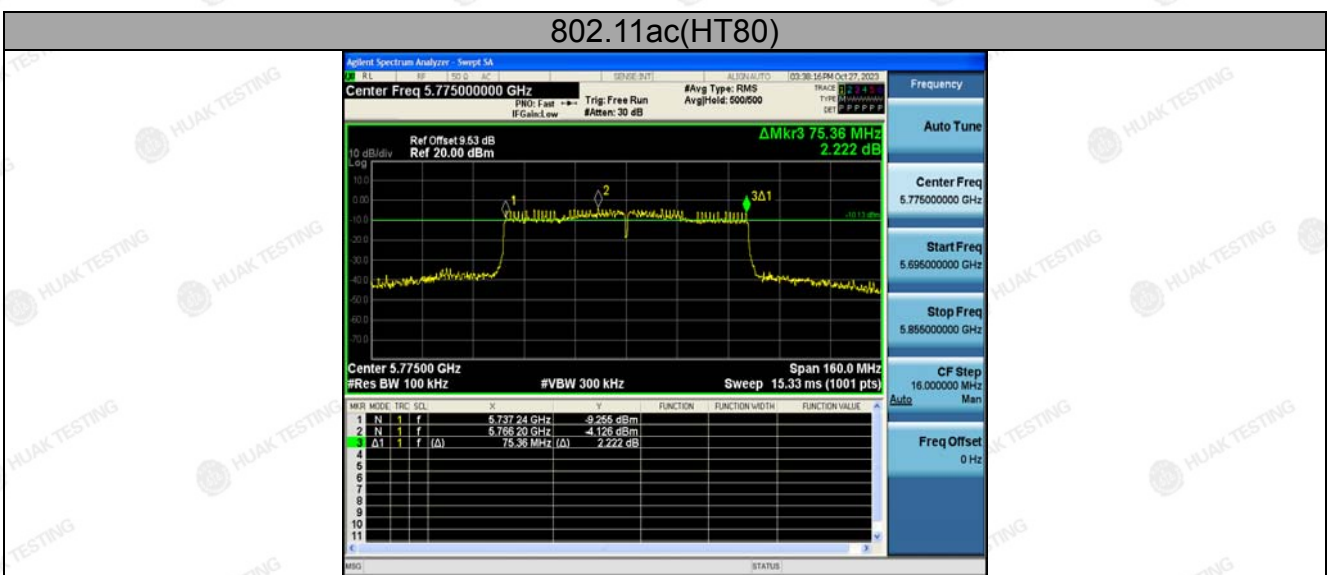
802.11ac HT40



Low



High



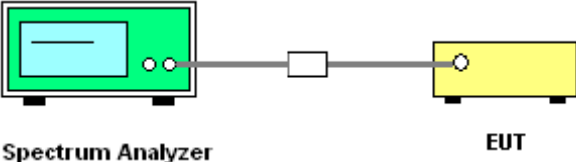
The results shown in this test report refer only to the sample(s) tested unless otherwise stated and the sample(s) are retained for 30 days only. The document is issued by HUAJ, this document cannot be reproduced except in full with our prior written permission. The more details and the authenticity of the report will be confirmed at <http://www.cer-mark.com>.

TEL : +86-755 2302 9901 FAX : +86-755 2302 9901 E-mail : service@cer-mark.com

Add: 1-2F., Building B2, Junfeng Zhongcheng Zhizao Innovation Park, Heping Community, Fuhai Street, Bao'an District, Shenzhen, Guangdong, China

4.4. 26DB Bandwidth and 99% Occupied Bandwidth

4.4.1. Test Specification

Test Requirement:	47 CFR Part 15C Section 15.407 (a)
Test Method:	KDB789033 D02 General UNII Test Procedures New Rules v02r01 Section C
Limit:	No restriction limits
Test Setup:	 <p style="text-align: center;">Spectrum Analyzer EUT</p>
Test Mode:	Transmitting mode with modulation
Test Procedure:	<ol style="list-style-type: none"> 1. KDB789033 D02 General UNII Test Procedures New Rules v02r01 Section C. 2. Set to the maximum power setting and enable the EUT transmit continuously. 3. Make the measurement with the spectrum analyzer's resolution bandwidth $RBW = 1\% EBW$, $VBW \geq 3RBW$, In order to make an accurate measurement. 4. Measure and record the results in the test report.
Test Result:	N/A

4.4.2. Test Instruments

RF Test Room					
Equipment	Manufacturer	Model	Serial Number	Calibration Date	Calibration Due
Spectrum analyzer	Agilent	N9020A	HKE-048	Feb. 17, 2023	Feb. 16, 2024
RF cable	Times	1-40G	HKE-034	Feb. 17, 2023	Feb. 16, 2024
RF automatic control unit	Tonscend	JS0806-2	HKE-060	Feb. 17, 2023	Feb. 16, 2024


Note: The calibration interval of the above test instruments is 12 months and the calibrations are traceable to international system unit (SI). Test Result

4.4.3. Test Result

N/A

4.5. Power Spectral Density

4.5.1. Test Specification

Test Requirement:	FCC Part15 E Section 15.407 (a)
Test Method:	KDB789033 D02 General UNII Test Procedures New Rules v02r01 Section F
Limit:	≤30.00dBm/500KHz for Band IV 5725MHz-5850MHz
Test Setup:	 <p style="text-align: center;">Spectrum Analyzer EUT</p>
Test Mode:	Transmitting mode with modulation
Test Procedure:	<ol style="list-style-type: none"> 1. Set the spectrum analyzer or EMI receiver span to view the entire emission bandwidth. 2. Set RBW = 510 kHz/1 MHz, VBW ≥ 3*RBW, Sweep time = Auto, Detector = RMS. 3. Allow the sweeps to continue until the trace stabilizes. 4. Use the peak marker function to determine the maximum amplitude level. 5. The E.I.R.P spectral density used radiated test method. At a test site that has been validated using the procedures of ANSI C63.4 or the latest CISPR 16-1-4 for measurements above 1 GHz, so as to simulate a near free-space environment.
Test Result:	PASS

4.5.2. Test Instruments

RF Test Room					
Equipment	Manufacturer	Model	Serial Number	Calibration Date	Calibration Due
Spectrum analyzer	Agilent	N9020A	HKE-048	Feb. 17, 2023	Feb. 16, 2024
RF cable	Times	1-40G	HKE-034	Feb. 17, 2023	Feb. 16, 2024
RF automatic control unit	Tonscend	JS0806-2	HKE-060	Feb. 17, 2023	Feb. 16, 2024

Note: The calibration interval of the above test instruments is 12 months and the calibrations are traceable to international system unit (SI).



4.5.3. Test data

Configuration Band IV (5725 - 5850 MHz)						
Mode	Test channel	Level [dBm/510kHz]	10log(500/510)	Power Spectral Density	Limit (dBm/500kHz)	Result
11a	CH149	2.99	-0.086	2.904	30	PASS
11a	CH157	3.13	-0.086	3.044	30	PASS
11a	CH165	6.2	-0.086	6.114	30	PASS
11n HT20	CH149	3.24	-0.086	3.154	30	PASS
11n HT20	CH157	3.95	-0.086	3.864	30	PASS
11n HT20	CH165	4.78	-0.086	4.694	30	PASS
11n HT40	CH151	1.22	-0.086	1.134	30	PASS
11n HT40	CH159	1.36	-0.086	1.274	30	PASS
11ac HT20	CH149	3.32	-0.086	3.234	30	PASS
11ac HT20	CH157	3.64	-0.086	3.554	30	PASS
11ac HT20	CH165	5.69	-0.086	5.604	30	PASS
11ac HT40	CH151	1.3	-0.086	1.214	30	PASS
11ac HT40	CH159	1.45	-0.086	1.364	30	PASS
11ac HT80	CH155	0.72	-0.086	0.634	30	PASS

Note: 1. Power Spectral Density= Level [dBm/510kHz]+ (10log(Limit RBW/Test RBW))
2. Instrument attenuation and cable loss See test diagram

Test plots as follows:



Band IV (5725-5850 MHz)

802.11a



Low



Mid



High

The results shown in this test report refer only to the sample(s) unless otherwise stated and the sample(s) are retained for 30 days only. The document is issued by HUAJ, this document cannot be reproduced except in full with our prior written permission. The more details and the authenticity of the report will be confirmed at <http://www.cer-mark.com>.

TEL : +86-755 2302 9901 FAX : +86-755 2302 9901 E-mail : service@cer-mark.com

Add: 1-2F., Building B2, Junfeng Zhongcheng Zhizao Innovation Park, Heping Community, Fuhai Street, Bao'an District, Shenzhen, Guangdong, China



802.11n HT20



Low



Mid



High

The results shown in this test report refer only to the sample(s) tested unless otherwise stated and the sample(s) are retained for 30 days only. The document is issued by HUAKE, this document cannot be reproduced except in full with our prior written permission. The more details and the authenticity of the report will be confirmed at <http://www.cer-mark.com>.

TEL : +86-755 2302 9901 FAX : +86-755 2302 9901 E-mail : service@cer-mark.com

Add: 1-2F., Building B2, Junfeng Zhongcheng Zhizao Innovation Park, Heping Community, Fuhai Street, Bao'an District, Shenzhen, Guangdong, China



802.11n HT40



Low



High

The results shown in this test report refer only to the sample(s) tested unless otherwise stated and the sample(s) are retained for 30 days only. The document is issued by HUAKE, this document cannot be reproduced except in full with our prior written permission. The more details and the authenticity of the report will be confirmed at <http://www.cer-mark.com>.

TEL : +86-755 2302 9901 FAX : +86-755 2302 9901 E-mail : service@cer-mark.com

Add: 1-2F., Building B2, Junfeng Zhongcheng Zhizao Innovation Park, Heping Community, Fuhai Street, Bao'an District, Shenzhen, Guangdong, China



802.11ac HT20



Low



Mid



High

The results shown in this test report refer only to the sample(s) tested unless otherwise stated and the sample(s) are retained for 30 days only. The document is issued by HUAKE, this document cannot be reproduced except in full with our prior written permission. The more details and the authenticity of the report will be confirmed at <http://www.cer-mark.com>.

TEL : +86-755 2302 9901 FAX : +86-755 2302 9901 E-mail : service@cer-mark.com

Add: 1-2F., Building B2, Junfeng Zhongcheng Zhizao Innovation Park, Heping Community, Fuhai Street, Bao'an District, Shenzhen, Guangdong, China



802.11ac HT40



Low



High

802.11ac(HT80)



The results shown in this test report refer only to the sample(s) tested unless otherwise stated and the sample(s) are retained for 30 days only. The document is issued by HUAKE, this document cannot be reproduced except in full with our prior written permission. The more details and the authenticity of the report will be confirmed at <http://www.cer-mark.com>.

TEL : +86-755 2302 9901 FAX : +86-755 2302 9901 E-mail : service@cer-mark.com

Add: 1-2F., Building B2, Junfeng Zhongcheng Zhizao Innovation Park, Heping Community, Fuhai Street, Bao'an District, Shenzhen, Guangdong, China

4.6. Band Edge

4.6.1. Test Specification

Test Requirement:	FCC CFR47 Part 15E Section 15.407
Test Method:	ANSI C63.10 2013
Limit:	<p>(1)For transmitters operating in the 5.725-5.85 GHz band: (i) All emissions shall be limited to a level of -27 dBm/MHz at 75 MHz or more above or below the band edge increasing linearly to 10 dBm/MHz at 25 MHz above or below the band edge, and from 25 MHz above or below the band edge increasing linearly to a level of 15.6 dBm/MHz at 5 MHz above or below the band edge, and from 5 MHz above or below the band edge increasing linearly to a level of 27 dBm/MHz at the band edge. The limit of frequency below 1GHz and which fall in restricted bands should complies 15.209.</p>
Test Setup:	<p>The diagram illustrates the test setup within an anechoic chamber. An Equipment Under Test (EUT) is placed on a turn table that is 1.5 meters high. The turn table is positioned 3 meters away from an antenna tower. The antenna tower has a height of 1-4 meters. The antenna's feed point is at the top of the tower. A receiver and amplifier (Amp.) are connected to the antenna tower. The ground plane is indicated at the base of the chamber.</p>
Test Mode:	Transmitting mode with modulation
Test Procedure:	<ol style="list-style-type: none"> 1. The EUT was placed on the top of a rotating table 0.8 meters above the ground at a 3 meter camber. The table was rotated 360 degrees to determine the position of the highest radiation. 2. The EUT was set 3 meters away from the interference-receiving antenna, which was mounted on the top of a variable-height antenna tower. 3. The antenna height is varied from one meter to four meters above the ground to determine the maximum value of the field strength. Both horizontal and vertical polarizations of the antenna are set to make the measurement. 4. For each suspected emission, the EUT was arranged to its worst case and then the antenna was tuned to heights from 1 meter to 4 meters and the rota table was turned from 0 degrees to 360 degrees to find the maximum reading. 5. The test-receiver system was set to Peak Detect Function and Specified Bandwidth with Maximum Hold Mode.



	6. If the emission level of the EUT in peak mode was 10dB lower than the limit specified, then testing could be stopped and the peak values of the EUT would be reported. Otherwise the emissions that did not have 10dB margin would be re-tested one by one using peak, quasi peak or average method as specified and then reported in a data sheet.
Test Result:	PASS



4.6.2. Test Instruments

Radiated Emission Test Site (966)

Name of Equipment	Manufacturer	Model	Serial Number	Calibration Date	Calibration Due
Receiver	R&S	ESRP3	HKE-005	Feb. 17, 2023	Feb. 16, 2024
Spectrum analyzer	Agilent	N9020A	HKE-048	Feb. 17, 2023	Feb. 16, 2024
Preamplifier	EMCI	EMC051845S E	HKE-015	Feb. 17, 2023	Feb. 16, 2024
Preamplifier	Agilent	83051A	HKE-016	Feb. 17, 2023	Feb. 16, 2024
Loop antenna	Schwarzbeck	FMZB 1519 B	HKE-014	Feb. 17, 2023	Feb. 16, 2024
Broadband antenna	Schwarzbeck	VULB 9163	HKE-012	Feb. 17, 2023	Feb. 16, 2024
Horn antenna	Schwarzbeck	9120D	HKE-013	Feb. 17, 2023	Feb. 16, 2024
Antenna Mast	Keleto	CC-A-4M	N/A	N/A	N/A
Position controller	Taiwan MF	MF7802	HKE-011	Feb. 17, 2023	Feb. 16, 2024
Radiated test software	Tonscend	TS+ Rev 2.5.0.0	HKE-082	N/A	N/A
RF cable (9KHz-1GHz)	Times	381806-001	N/A	N/A	N/A
Hf antenna	Schwarzbeck	LB-180400-KF	HKE-031	Feb. 17, 2023	Feb. 16, 2024
RF cable	Tonscend	1-18G	HKE-099	Feb. 17, 2023	Feb. 16, 2024
RF cable	Times	1-40G	HKE-034	Feb. 17, 2023	Feb. 16, 2024
Horn Antenna	Schwarzbeck	BBHA 9170	HKE-017	Feb. 17, 2023	Feb. 16, 2024
Spectrum analyzer	R&S	FSP40	HKE-025	Feb. 17, 2023	Feb. 16, 2024

Note: The calibration interval of the above test instruments is 12 months and the calibrations are traceable to international system unit (SI).



4.6.3. Test Data

Operation Mode: 802.11a Mode with 5.8G TX CH Low

Horizontal

Frequency (MHz)	Meter Reading (dBμV)	Factor (dB)	Emission Level (dBμV/m)	Limits (dBμV/m)	Margin (dB)	Detector Type
5650	43.09	-2.06	41.03	68.2	-27.17	
5700	83.74	-1.96	81.78	105.2	-23.42	peak
5720	89.52	-2.87	86.65	110.8	-24.15	peak
5725	99.21	-2.14	97.07	122.2	-25.13	peak

Remark: Factor = Antenna Factor + Cable Loss – Pre-amplifier; Level = Reading + Factor; Margin = Level - Limit

Vertical:

Frequency (MHz)	Meter Reading (dBμV)	Factor (dB)	Emission Level (dBμV/m)	Limits (dBμV/m)	Margin (dB)	Detector Type
5650	44.71	-2.06	42.65	68.2	-25.55	
5700	84.03	-1.96	82.07	105.2	-23.13	peak
5720	91.72	-2.87	88.85	110.8	-21.95	peak
5725	94.56	-2.14	92.42	122.2	-29.78	peak

Remark: Factor = Antenna Factor + Cable Loss – Pre-amplifier; Level = Reading + Factor; Margin = Level - Limit



Operation Mode: TX CH High with 5.8G

Horizontal

Frequency	Meter Reading	Factor	Emission Level	Limits	Margin	Detector Type
(MHz)	(dBµV)	(dB)	(dBµV/m)	(dBµV/m)	(dB)	
5850	95.56	-1.97	93.59	122.2	-28.61	peak
5855	88.99	-2.13	86.86	110.8	-23.94	peak
5875	81.59	-2.65	78.94	105.2	-26.26	peak
5925	47.03	-2.28	44.75	68.2	-23.45	peak

Remark: Factor = Antenna Factor + Cable Loss – Pre-amplifier; Level = Reading + Factor; Margin = Level - Limit

Vertical:

Frequency	Meter Reading	Factor	Emission Level	Limits	Margin	Detector Type
(MHz)	(dBµV)	(dB)	(dBµV/m)	(dBµV/m)	(dB)	
5850	99.24	-1.97	97.27	122.2	-24.93	peak
5855	86.78	-2.13	84.65	110.8	-26.15	peak
5875	83.44	-2.65	80.79	105.2	-24.41	peak
5925	50.86	-2.28	48.58	68.2	-19.62	peak

Remark: Factor = Antenna Factor + Cable Loss – Pre-amplifier; Level = Reading + Factor; Margin = Level - Limit



Operation Mode: 802.11n20 Mode with 5.8G TX CH Low

Horizontal

Frequency	Meter Reading	Factor	Emission Level	Limits	Margin	Detector Type
(MHz)	(dBµV)	(dB)	(dBµV/m)	(dBµV/m)	(dB)	
5650	46.93	-2.06	44.87	68.2	-23.33	peak
5700	83.62	-1.96	81.66	105.2	-23.54	peak
5720	90.89	-2.87	88.02	110.8	-22.78	peak
5725	99.51	-2.14	97.37	122.2	-24.83	peak

Remark: Factor = Antenna Factor + Cable Loss – Pre-amplifier; Level = Reading + Factor; Margin = Level - Limit

Vertical:

Frequency	Meter Reading	Factor	Emission Level	Limits	Margin	Detector Type
(MHz)	(dBµV)	(dB)	(dBµV/m)	(dBµV/m)	(dB)	
5650	44.09	-2.06	42.03	68.2	-26.17	peak
5700	85.35	-1.96	83.39	105.2	-21.81	peak
5720	91.11	-2.87	88.24	110.8	-22.56	peak
5725	97.72	-2.14	95.58	122.2	-26.62	peak

Remark: Factor = Antenna Factor + Cable Loss – Pre-amplifier; Level = Reading + Factor; Margin = Level - Limit



Operation Mode: TX CH High with 5.8G

Horizontal

Frequency	Meter Reading	Factor	Emission Level	Limits	Margin	Detector Type
(MHz)	(dBμV)	(dB)	(dBμV/m)	(dBμV/m)	(dB)	
5850	95.12	-1.97	93.15	122.2	-29.05	peak
5855	89.25	-2.13	87.12	110.8	-23.68	peak
5875	82.99	-2.65	80.34	105.2	-24.86	peak
5925	49.03	-2.28	46.75	68.2	-21.45	peak

Remark: Factor = Antenna Factor + Cable Loss – Pre-amplifier; Level = Reading + Factor; Margin = Level - Limit

Vertical:

Frequency	Meter Reading	Factor	Emission Level	Limits	Margin	Detector Type
(MHz)	(dBμV)	(dB)	(dBμV/m)	(dBμV/m)	(dB)	
5850	97.24	-1.97	95.27	122.2	-26.93	peak
5855	89.38	-2.13	87.25	110.8	-23.55	peak
5875	83.68	-2.65	81.03	105.2	-24.17	peak
5925	46.95	-2.28	44.67	68.2	-23.53	peak

Remark: Factor = Antenna Factor + Cable Loss – Pre-amplifier; Level = Reading + Factor; Margin = Level - Limit



Operation Mode: 802.11n40 Mode with 5.8G TX CH Low

Horizontal

Frequency	Meter Reading	Factor	Emission Level	Limits	Margin	Detector Type
(MHz)	(dBµV)	(dB)	(dBµV/m)	(dBµV/m)	(dB)	
5650	43.44	-2.06	41.38	68.2	-26.82	peak
5700	83.99	-1.96	82.03	105.2	-23.17	peak
5720	89.11	-2.87	86.24	110.8	-24.56	peak
5725	97.08	-2.14	94.94	122.2	-27.26	peak

Remark: Factor = Antenna Factor + Cable Loss – Pre-amplifier; Level = Reading + Factor; Margin = Level - Limit

Vertical:

Frequency	Meter Reading	Factor	Emission Level	Limits	Margin	Detector Type
(MHz)	(dBµV)	(dB)	(dBµV/m)	(dBµV/m)	(dB)	
5650	44.23	-2.06	42.17	68.2	-26.03	peak
5700	82.15	-1.96	80.19	105.2	-25.01	peak
5720	93.05	-2.87	90.18	110.8	-20.62	peak
5725	97.09	-2.14	94.95	122.2	-27.25	peak

Remark: Factor = Antenna Factor + Cable Loss – Pre-amplifier; Level = Reading + Factor; Margin = Level - Limit



Operation Mode: TX CH High with 5.8G

Horizontal

Frequency	Meter Reading	Factor	Emission Level	Limits	Margin	Detector Type
(MHz)	(dBμV)	(dB)	(dBμV/m)	(dBμV/m)	(dB)	
5850	96.38	-1.97	94.41	122.2	-27.79	peak
5855	88.07	-2.13	85.94	110.8	-24.86	peak
5875	83.03	-2.65	80.38	105.2	-24.82	peak
5925	47.87	-2.28	45.59	68.2	-22.61	peak

Remark: Factor = Antenna Factor + Cable Loss – Pre-amplifier; Level = Reading + Factor; Margin = Level - Limit

Vertical:

Frequency	Meter Reading	Factor	Emission Level	Limits	Margin	Detector Type
(MHz)	(dBμV)	(dB)	(dBμV/m)	(dBμV/m)	(dB)	
5850	96.66	-1.97	94.69	122.2	-27.51	peak
5855	86.14	-2.13	84.01	110.8	-26.79	peak
5875	82.56	-2.65	79.91	105.2	-25.29	peak
5925	50.39	-2.28	48.11	68.2	-20.09	peak

Remark: Factor = Antenna Factor + Cable Loss – Pre-amplifier; Level = Reading + Factor; Margin = Level - Limit



Operation Mode: 802.11ac20 Mode with 5.8G TX CH Low

Horizontal

Frequency	Meter Reading	Factor	Emission Level	Limits	Margin	Detector Type
(MHz)	(dBµV)	(dB)	(dBµV/m)	(dBµV/m)	(dB)	
5650	46.34	-2.06	44.28	68.2	-23.92	peak
5700	85.08	-1.96	83.12	105.2	-22.08	peak
5720	89.71	-2.87	86.84	110.8	-23.96	peak
5725	99.27	-2.14	97.13	122.2	-25.07	peak

Remark: Factor = Antenna Factor + Cable Loss – Pre-amplifier; Level = Reading + Factor; Margin = Level - Limit

Vertical:

Frequency	Meter Reading	Factor	Emission Level	Limits	Margin	Detector Type
(MHz)	(dBµV)	(dB)	(dBµV/m)	(dBµV/m)	(dB)	
5650	41.96	-2.06	39.9	68.2	-28.3	peak
5700	83.47	-1.96	81.51	105.2	-23.69	peak
5720	90.24	-2.87	87.37	110.8	-23.43	peak
5725	96.32	-2.14	94.18	122.2	-28.02	peak

Remark: Factor = Antenna Factor + Cable Loss – Pre-amplifier; Level = Reading + Factor; Margin = Level - Limit



Operation Mode: TX CH High with 5.8G

Horizontal

Frequency	Meter Reading	Factor	Emission Level	Limits	Margin	Detector Type
(MHz)	(dBμV)	(dB)	(dBμV/m)	(dBμV/m)	(dB)	
5850	97.42	-1.97	95.45	122.2	-26.75	peak
5855	88.87	-2.13	86.74	110.8	-24.06	peak
5875	84.19	-2.65	81.54	105.2	-23.66	peak
5925	46.69	-2.28	44.41	68.2	-23.79	peak

Remark: Factor = Antenna Factor + Cable Loss – Pre-amplifier; Level = Reading + Factor; Margin = Level - Limit

Vertical:

Frequency	Meter Reading	Factor	Emission Level	Limits	Margin	Detector Type
(MHz)	(dBμV)	(dB)	(dBμV/m)	(dBμV/m)	(dB)	
5850	95.77	-1.97	93.8	122.2	-28.4	peak
5855	90.77	-2.13	88.64	110.8	-22.16	peak
5875	84.34	-2.65	81.69	105.2	-23.51	peak
5925	49.06	-2.28	46.78	68.2	-21.42	peak

Remark: Factor = Antenna Factor + Cable Loss – Pre-amplifier; Level = Reading + Factor; Margin = Level - Limit



Operation Mode: 802.11ac40 Mode with 5.8G TX CH Low

Horizontal

Frequency	Meter Reading	Factor	Emission Level	Limits	Margin	Detector Type
(MHz)	(dBµV)	(dB)	(dBµV/m)	(dBµV/m)	(dB)	
5650	42.47	-2.06	40.41	68.2	-27.79	peak
5700	83.66	-1.96	81.7	105.2	-23.5	peak
5720	88.78	-2.87	85.91	110.8	-24.89	peak
5725	100.08	-2.14	97.94	122.2	-24.26	peak

Remark: Factor = Antenna Factor + Cable Loss – Pre-amplifier; Level = Reading + Factor; Margin = Level - Limit

Vertical:

Frequency	Meter Reading	Factor	Emission Level	Limits	Margin	Detector Type
(MHz)	(dBµV)	(dB)	(dBµV/m)	(dBµV/m)	(dB)	
5650	43.48	-2.06	41.42	68.2	-26.78	peak
5700	82.68	-1.96	80.72	105.2	-24.48	peak
5720	91.01	-2.87	88.14	110.8	-22.66	peak
5725	96.86	-2.14	94.72	122.2	-27.48	peak

Remark: Factor = Antenna Factor + Cable Loss – Pre-amplifier; Level = Reading + Factor; Margin = Level - Limit



Operation Mode: TX CH High with 5.8G

Horizontal

Frequency	Meter Reading	Factor	Emission Level	Limits	Margin	Detector Type
(MHz)	(dBμV)	(dB)	(dBμV/m)	(dBμV/m)	(dB)	
5850	93.68	-1.97	91.71	122.2	-30.49	peak
5855	87.41	-2.13	85.28	110.8	-25.52	peak
5875	83.37	-2.65	80.72	105.2	-24.48	peak
5925	46.02	-2.28	43.74	68.2	-24.46	peak

Remark: Factor = Antenna Factor + Cable Loss – Pre-amplifier; Level = Reading + Factor; Margin = Level - Limit

Vertical:

Frequency	Meter Reading	Factor	Emission Level	Limits	Margin	Detector Type
(MHz)	(dBμV)	(dB)	(dBμV/m)	(dBμV/m)	(dB)	
5850	99.68	-1.97	97.71	122.2	-24.49	peak
5855	87.91	-2.13	85.78	110.8	-25.02	peak
5875	84.74	-2.65	82.09	105.2	-23.11	peak
5925	48.12	-2.28	45.84	68.2	-22.36	peak

Remark: Factor = Antenna Factor + Cable Loss – Pre-amplifier; Level = Reading + Factor; Margin = Level - Limit



Operation Mode: 802.11ac80 Mode with 5.8G TX CH Low

Horizontal

Frequency	Meter Reading	Factor	Emission Level	Limits	Margin	Detector Type
(MHz)	(dBμV)	(dB)	(dBμV/m)	(dBμV/m)	(dB)	
5650	52.25	-2.06	50.19	68.2	-18.01	peak
5700	84.86	-1.96	82.9	105.2	-22.3	peak
5720	89.97	-2.87	87.1	110.8	-23.7	peak
5725	105.22	-2.14	103.08	122.2	-19.12	peak

Remark: Factor = Antenna Factor + Cable Loss – Pre-amplifier.

Vertical:

Frequency	Meter Reading	Factor	Emission Level	Limits	Margin	Detector Type
(MHz)	(dBμV)	(dB)	(dBμV/m)	(dBμV/m)	(dB)	
5650	54.74	-2.06	52.68	68.2	-15.52	peak
5700	85.78	-1.96	83.82	105.2	-21.38	peak
5720	92.02	-2.87	89.15	110.8	-21.65	peak
5725	106.78	-2.14	104.64	122.2	-17.56	peak

Remark: Factor = Antenna Factor + Cable Loss – Pre-amplifier.



Operation Mode: TX CH High with 5.8G

Horizontal

Frequency	Meter Reading	Factor	Emission Level	Limits	Margin	Detector Type
(MHz)	(dBµV)	(dB)	(dBµV/m)	(dBµV/m)	(dB)	
5850	109.76	-1.97	107.79	122.2	-14.41	peak
5855	91.18	-2.13	89.05	110.8	-21.75	peak
5875	83.41	-2.65	80.76	105.2	-24.44	peak
5925	50.32	-2.28	48.04	68.2	-20.16	peak

Remark: Factor = Antenna Factor + Cable Loss – Pre-amplifier.

Vertical:

Frequency	Meter Reading	Factor	Emission Level	Limits	Margin	Detector Type
(MHz)	(dBµV)	(dB)	(dBµV/m)	(dBµV/m)	(dB)	
5850	105.34	-1.97	103.37	122.2	-18.83	peak
5855	90.31	-2.13	88.18	110.8	-22.62	peak
5875	84.69	-2.65	82.04	105.2	-23.16	peak
5925	55.93	-2.28	53.65	68.2	-14.55	peak

Remark: Factor = Antenna Factor + Cable Loss – Pre-amplifier.

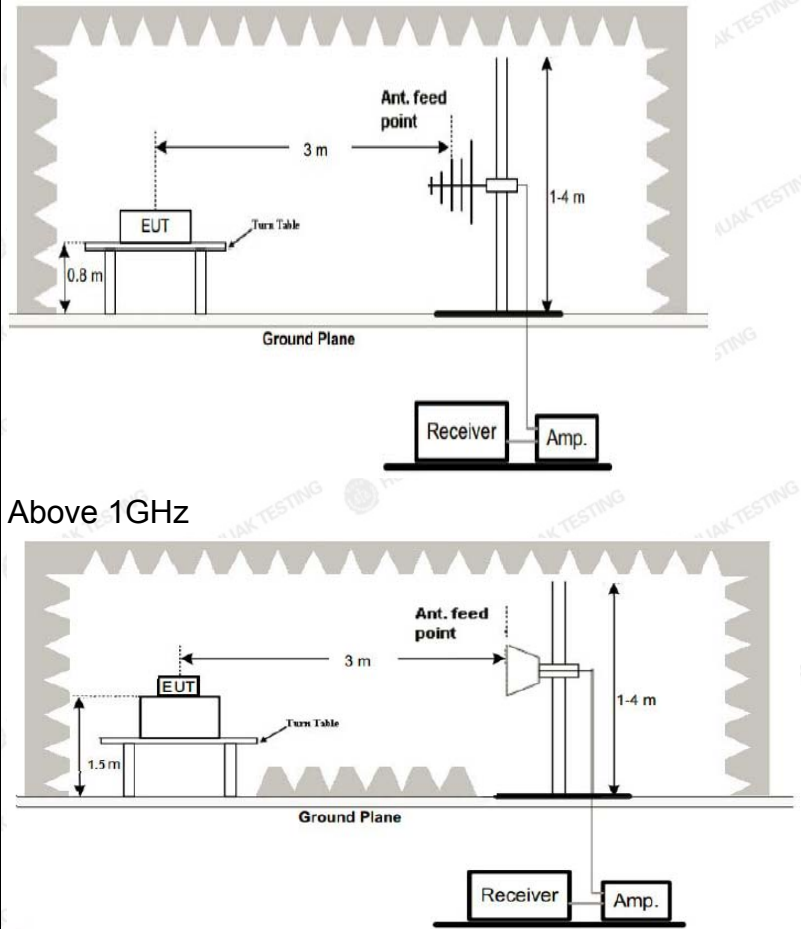
Remark:

1. If the PK measured levels comply with average limit, then the average level were deemed to comply with average limit.
2. In restricted bands of operation, the spurious emissions below the permissible value more than 20dB.
3. The amplitude of spurious emissions which are attenuated by more than 20dB below the permissible value has no need to be reported.

4.7. Spurious Emission

4.7.1.1. Test Specification

Test Requirement:	FCC CFR47 Part 15 Section 15.407 & 15.209 & 15.205																													
Test Method:	KDB 789033 D02 v02r01																													
Frequency Range:	9kHz to 40GHz																													
Measurement Distance:	3 m																													
Antenna Polarization:	Horizontal & Vertical																													
Operation mode:	Transmitting mode with modulation																													
Receiver Setup:	<table border="1"> <thead> <tr> <th>Frequency</th> <th>Detector</th> <th>RBW</th> <th>VBW</th> <th>Remark</th> </tr> </thead> <tbody> <tr> <td>9kHz- 150kHz</td> <td>Quasi-peak</td> <td>200Hz</td> <td>1kHz</td> <td>Quasi-peak Value</td> </tr> <tr> <td>150kHz- 30MHz</td> <td>Quasi-peak</td> <td>9kHz</td> <td>30kHz</td> <td>Quasi-peak Value</td> </tr> <tr> <td>30MHz-1GHz</td> <td>Quasi-peak</td> <td>120KHz</td> <td>300KHz</td> <td>Quasi-peak Value</td> </tr> <tr> <td rowspan="2">Above 1GHz</td> <td>Peak</td> <td>1MHz</td> <td>3MHz</td> <td>Peak Value</td> </tr> <tr> <td>Peak</td> <td>1MHz</td> <td>10Hz</td> <td>Average Value</td> </tr> </tbody> </table>	Frequency	Detector	RBW	VBW	Remark	9kHz- 150kHz	Quasi-peak	200Hz	1kHz	Quasi-peak Value	150kHz- 30MHz	Quasi-peak	9kHz	30kHz	Quasi-peak Value	30MHz-1GHz	Quasi-peak	120KHz	300KHz	Quasi-peak Value	Above 1GHz	Peak	1MHz	3MHz	Peak Value	Peak	1MHz	10Hz	Average Value
	Frequency	Detector	RBW	VBW	Remark																									
	9kHz- 150kHz	Quasi-peak	200Hz	1kHz	Quasi-peak Value																									
	150kHz- 30MHz	Quasi-peak	9kHz	30kHz	Quasi-peak Value																									
	30MHz-1GHz	Quasi-peak	120KHz	300KHz	Quasi-peak Value																									
Above 1GHz	Peak	1MHz	3MHz	Peak Value																										
	Peak	1MHz	10Hz	Average Value																										
Limit:	<p>(1) For transmitters operating in the 5.15-5.25 GHz band: All emissions outside of the 5.15-5.35 GHz band shall not exceed an e.i.r.p. of -27 dBm/MHz.</p> <p>(2) For transmitters operating in the 5.25-5.35 GHz band: All emissions outside of the 5.15-5.35 GHz band shall not exceed an e.i.r.p. of -27 dBm/MHz.</p> <p>(3) For transmitters operating in the 5.47-5.725 GHz band: All emissions outside of the 5.47-5.725 GHz band shall not exceed an e.i.r.p. of -27 dBm/MHz.</p> <p>(4) For transmitters operating in the 5.725-5.85 GHz band:</p> <p>(i) All emissions shall be limited to a level of -27 dBm/MHz at 75 MHz or more above or below the band edge increasing linearly to 10 dBm/MHz at 25 MHz above or below the band edge, and from 25 MHz above or below the band edge increasing linearly to a level of 15.6 dBm/MHz at 5 MHz above or below the band edge, and from 5 MHz above or below the band edge increasing linearly to a level of 27 dBm/MHz at the band edge.</p> <p>The limit of frequency below 1GHz and which fall in restricted bands should comply 15.209.</p>																													
Test setup:	<p>For radiated emissions below 30MHz</p>																													
	30MHz to 1GHz																													

**Test Procedure:**

1. The EUT was placed on the top of a rotating table 0.8 meters above the ground at a 3 meter camber. The table was rotated 360 degrees to determine the position of the highest radiation.
2. The EUT was set 3 meters away from the interference-receiving antenna, which was mounted on the top of a variable-height antenna tower.
3. The antenna height is varied from one meter to four meters above the ground to determine the maximum value of the field strength. Both horizontal and vertical polarizations of the antenna are set to make the measurement.
4. For each suspected emission, the EUT was arranged to its worst case and then the antenna was tuned to heights from 1 meter to 4 meters and the rotatable was turned from 0 degrees to 360 degrees to find the maximum reading.
5. The test-receiver system was set to Peak Detect Function and Specified Bandwidth with Maximum Hold Mode.



	6. If the emission level of the EUT in peak mode was 10dB lower than the limit specified, then testing could be stopped and the peak values of the EUT would be reported. Otherwise the emissions that did not have 10dB margin would be re-tested one by one using peak, quasi-peak or average method as specified and then reported in a data sheet.
Test results:	PASS



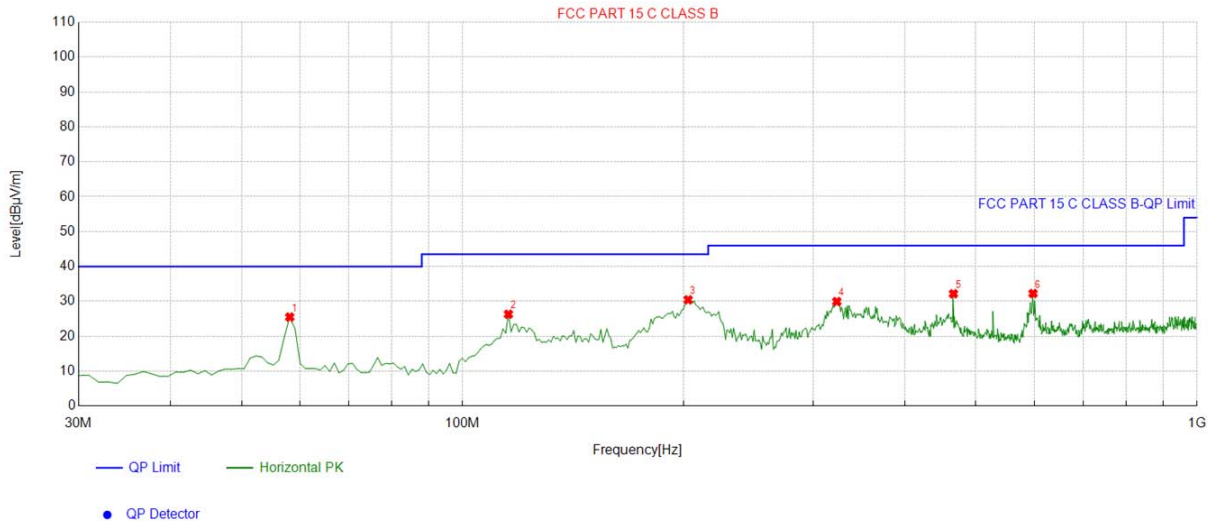
4.7.2. Test Data

test mode: TX 802.11a 5745MHz

Remark: All the test modes completed for test. only the worst result of 802.11a was reported as below:

Below 1GHz

Horizontal

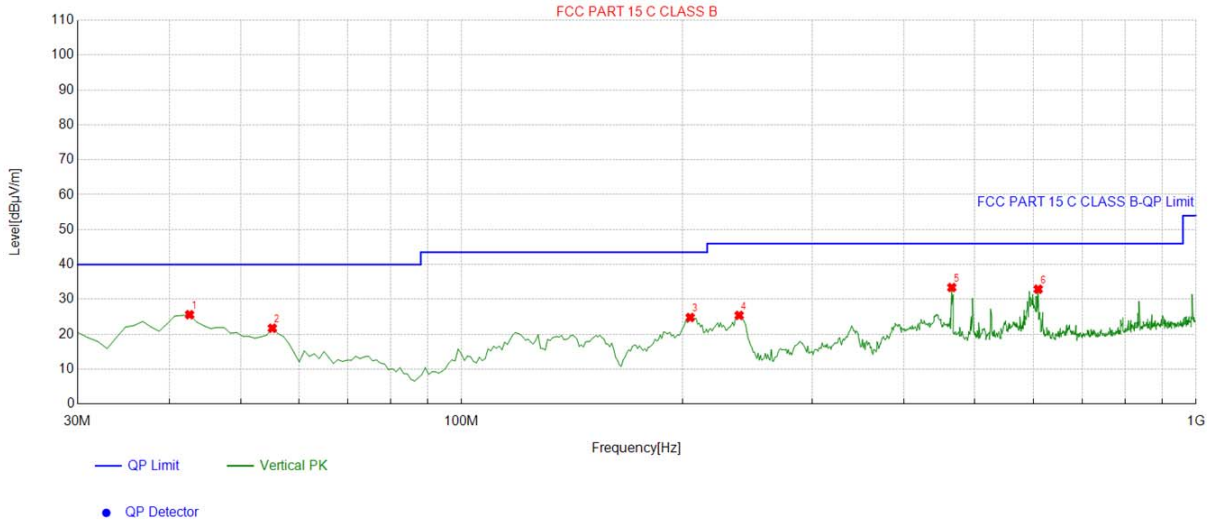


Suspected List									
NO.	Freq. [MHz]	Factor [dB]	Reading [dBµV/m]	Level [dBµV/m]	Limit [dBµV/m]	Margin [dB]	Height [cm]	Angle [°]	Polarity
1	58.158158	-14.51	40.02	25.51	40.00	14.49	100	297	Horizontal
2	115.44544	-15.02	41.35	26.33	43.50	17.17	100	321	Horizontal
3	202.83283	-14.87	45.32	30.45	43.50	13.05	100	297	Horizontal
4	323.23323	-11.64	41.59	29.95	46.00	16.05	100	305	Horizontal
5	465.96596	-8.17	40.35	32.18	46.00	13.82	100	352	Horizontal
6	598.01801	-5.07	37.33	32.26	46.00	13.74	100	357	Horizontal

Remark: Factor = Cable loss + Antenna factor – Preamplifier; Level = Reading + Factor; Margin = Limit – Level



Vertical



Suspected List									
NO.	Freq. [MHz]	Factor [dB]	Reading [dBµV/m]	Level [dBµV/m]	Limit [dBµV/m]	Margin [dB]	Height [cm]	Angle [°]	Polarity
1	42.622623	-15.19	40.80	25.61	40.00	14.39	100	69	Vertical
2	55.245245	-14.32	36.05	21.73	40.00	18.27	100	6	Vertical
3	204.77477	-14.64	39.45	24.81	43.50	18.69	100	204	Vertical
4	238.75875	-13.34	38.75	25.41	46.00	20.59	100	176	Vertical
5	464.99499	-8.20	41.60	33.40	46.00	12.60	100	85	Vertical
6	609.66967	-4.73	37.65	32.92	46.00	13.08	100	1	Vertical

Remark: Factor = Cable loss + Antenna factor – Preamplifier; Level = Reading + Factor; Margin = Limit – Level

Harmonics and Spurious Emissions

Frequency Range (9 kHz-30MHz)

Frequency (MHz)	Level@3m (dBµV/m)	Limit@3m (dBµV/m)
--	--	--
--	--	--
--	--	--
--	--	--

- Note: 1. Emission Level=Reading+ Cable loss-Antenna factor-Amp factor
- 2. The emission levels are 20 dB below the limit value, which are not reported. It is deemed to comply with the requirement



Above 1GHz

RADIATED EMISSION TEST

LOW CH 149 (802.11 a Mode with 5.8G)/5745

Horizontal:

Frequency	Meter Reading	Factor	Emission Level	Limits	Margin	Detector Type
(MHz)	(dBµV)	(dB)	(dBµV/m)	(dBµV/m)	(dB)	
3368	56.67	-4.59	52.08	68.2	-16.12	peak
11096	51.23	4.21	55.44	74	-18.56	peak
11096	33.84	4.21	38.05	54	-15.95	AVG

Remark: Factor = Antenna Factor + Cable Loss – Pre-amplifier; Level = Reading + Factor; Margin = Level - Limit

Vertical:

Frequency	Meter Reading	Factor	Emission Level	Limits	Margin	Detector Type
(MHz)	(dBµV)	(dB)	(dBµV/m)	(dBµV/m)	(dB)	
3368	54.11	-4.59	49.52	68.2	-18.68	peak
11096	48.79	4.21	53	74	-21	peak
11096	34.63	4.21	38.84	54	-15.16	AVG

Remark: Factor = Antenna Factor + Cable Loss – Pre-amplifier; Level = Reading + Factor; Margin = Level - Limit



MID CH157 (802.11 a Mode with 5.8G)/5785

Horizontal:

Frequency	Meter Reading	Factor	Emission Level	Limits	Margin	Detector Type
(MHz)	(dBμV)	(dB)	(dBμV/m)	(dBμV/m)	(dB)	
3172	56.33	-4.59	51.74	68.2	-16.46	peak
10523	52.04	4.21	56.25	68.2	-11.95	peak
Remark: Factor = Antenna Factor + Cable Loss – Pre-amplifier; Level = Reading + Factor; Margin = Level - Limit						

Vertical:

Frequency	Meter Reading	Factor	Emission Level	Limits	Margin	Detector Type
(MHz)	(dBμV)	(dB)	(dBμV/m)	(dBμV/m)	(dB)	
3172	56.13	-4.59	51.54	68.2	-16.66	peak
10523	52.61	4.21	56.82	68.2	-11.38	peak
Remark: Factor = Antenna Factor + Cable Loss – Pre-amplifier; Level = Reading + Factor; Margin = Level - Limit						



HIGH CH 165 (802.11a Mode with 5.8G)/5825

Horizontal:

Frequency (MHz)	Meter Reading (dBμV)	Factor (dB)	Emission Level (dBμV/m)	Limits (dBμV/m)	Margin (dB)	Detector Type
2705	57.49	-4.59	52.9	74	-21.1	peak
2705	44.25	-4.59	39.66	54	-14.34	AVG
11717	52.76	4.84	57.6	74	-16.4	peak
11717	37.32	4.84	42.16	54	-11.84	AVG

Remark: Factor = Antenna Factor + Cable Loss – Pre-amplifier; Level = Reading + Factor; Margin = Level - Limit

Vertical:

Frequency (MHz)	Meter Reading (dBμV)	Factor (dB)	Emission Level (dBμV/m)	Limits (dBμV/m)	Margin (dB)	Detector Type
2705	56.27	-4.59	51.68	74	-22.32	peak
2705	43.79	-4.59	39.2	54	-14.8	AVG
11717	53.56	4.84	58.4	74	-15.6	peak
11717	33.92	4.84	38.76	54	-15.24	AVG

Remark: Factor = Antenna Factor + Cable Loss – Pre-amplifier; Level = Reading + Factor; Margin = Level - Limit

Remark:

- (1) Measuring frequencies from 1 GHz to the 40 GHz.
- (2) "F" denotes fundamental frequency; "H" denotes spurious frequency. "E" denotes band edge frequency.
- (3) * denotes emission frequency which appearing within the Restricted Bands specified in provision of 15.205, then the general radiated emission limits in 15.209 apply.
- (4) The emissions are attenuated more than 20dB below the permissible limits are not record in the report.
- (5) The IF bandwidth of EMI Test Receiver between 30MHz to 1GHz was 120KHz, 1 MHz for measuring above 1 GHz, below 30MHz was 10KHz.
- (6) When the test results of Peak Detected below the limits of Average Detected, the Average Detected is not need completed. For example: Top Channel at Fundamental 73.16dBuV/m(PK Value) <93.98(AV Limit), at harmonic 53.20 dBuV/m(PK Value) <54 dBuV/m(AV Limit), the Average Detected not need to completed.



5.8G 802.11n20 Mode

LOW CH 149

Horizontal:

Frequency (MHz)	Meter Reading (dBμV)	Factor (dB)	Emission Level (dBμV/m)	Limits (dBμV/m)	Margin (dB)	Detector Type
3368	55.69	-4.59	51.1	68.2	-17.1	
11096	53.03	4.21	57.24	74	-16.76	peak
11096	32.83	4.21	37.04	54	-16.96	AVG

Remark: Factor = Antenna Factor + Cable Loss – Pre-amplifier; Level = Reading + Factor; Margin = Level - Limit

Vertical:

Frequency (MHz)	Meter Reading (dBμV)	Factor (dB)	Emission Level (dBμV/m)	Limits (dBμV/m)	Margin (dB)	Detector Type
3368	54.38	-4.59	49.79	68.2	-18.41	
11096	49.31	4.21	53.52	74	-20.48	peak
11096	33.92	4.21	38.13	54	-15.87	AVG

Remark: Factor = Antenna Factor + Cable Loss – Pre-amplifier; Level = Reading + Factor; Margin = Level - Limit



MID CH157

Horizontal:

Frequency	Meter Reading	Factor	Emission Level	Limits	Margin	Detector Type
(MHz)	(dBμV)	(dB)	(dBμV/m)	(dBμV/m)	(dB)	
3172	51.97	-4.59	47.38	68.2	-20.82	peak
10523	50.05	4.21	54.26	68.2	-13.94	peak

Remark: Factor = Antenna Factor + Cable Loss – Pre-amplifier; Level = Reading + Factor; Margin = Level - Limit

Vertical:

Frequency	Meter Reading	Factor	Emission Level	Limits	Margin	Detector Type
(MHz)	(dBμV)	(dB)	(dBμV/m)	(dBμV/m)	(dB)	
3172	59.28	-4.59	54.69	68.2	-13.51	peak
10523	47.63	4.21	51.84	68.2	-16.36	peak

Remark: Factor = Antenna Factor + Cable Loss – Pre-amplifier; Level = Reading + Factor; Margin = Level - Limit



HIGH CH165

Horizontal:

Frequency (MHz)	Meter Reading (dBμV)	Factor (dB)	Emission Level (dBμV/m)	Limits (dBμV/m)	Margin (dB)	Detector Type
2705	57.23	-4.59	52.64	74	-21.36	peak
2705	41.39	-4.59	36.8	54	-17.2	AVG
11717	51.48	4.84	56.32	74	-17.68	peak
11717	40.18	4.84	45.02	54	-8.98	AVG

Remark: Factor = Antenna Factor + Cable Loss – Pre-amplifier; Level = Reading + Factor; Margin = Level - Limit

Vertical:

Frequency (MHz)	Meter Reading (dBμV)	Factor (dB)	Emission Level (dBμV/m)	Limits (dBμV/m)	Margin (dB)	Detector Type
2705	57.31	-4.59	52.72	74	-21.28	peak
2705	44.23	-4.59	39.64	54	-14.36	AVG
11717	52.59	4.84	57.43	74	-16.57	peak
11717	41.47	4.84	46.31	54	-7.69	AVG

Remark: Factor = Antenna Factor + Cable Loss – Pre-amplifier; Level = Reading + Factor; Margin = Level - Limit

Remark:

- (1) Measuring frequencies from 1 GHz to the 40 GHz.
- (2) "F" denotes fundamental frequency; "H" denotes spurious frequency. "E" denotes band edge frequency.
- (3) * denotes emission frequency which appearing within the Restricted Bands specified in provision of 15.205, then the general radiated emission limits in 15.209 apply.
- (4) The emissions are attenuated more than 20dB below the permissible limits are not record in the report.
- (5) The IF bandwidth of EMI Test Receiver between 30MHz to 1GHz was 120KHz, 1 MHz for measuring above 1 GHz, below 30MHz was 10KHz.
- (6) When the test results of Peak Detected below the limits of Average Detected, the Average Detected is not need completed. For example: Top Channel at Fundamental 73.16dBuV/m(PK Value) <93.98(AV Limit), at harmonic 53.20 dBuV/m(PK Value) <54 dBuV/m(AV Limit), the Average Detected not need to completed.



5.8G 802.11n40 Mode

LOW CH 151

Horizontal:

Frequency (MHz)	Meter Reading (dBµV)	Factor (dB)	Emission Level (dBµV/m)	Limits (dBµV/m)	Margin (dB)	Detector Type
3368	57.04	-4.59	52.45	68.2	-15.75	
11096	53.15	4.21	57.36	74	-16.64	peak
11096	34.69	4.21	38.9	54	-15.1	AVG

Remark: Factor = Antenna Factor + Cable Loss – Pre-amplifier; Level = Reading + Factor; Margin = Level - Limit

Vertical:

Frequency (MHz)	Meter Reading (dBµV)	Factor (dB)	Emission Level (dBµV/m)	Limits (dBµV/m)	Margin (dB)	Detector Type
3368	58.14	-4.59	53.55	68.2	-14.65	
11096	52.11	4.21	56.32	74	-17.68	peak
11096	35.11	4.21	39.32	54	-14.68	AVG

Remark: Factor = Antenna Factor + Cable Loss – Pre-amplifier; Level = Reading + Factor; Margin = Level - Limit



MID CH159

Horizontal:

Frequency	Meter Reading	Factor	Emission Level	Limits	Margin	Detector Type
(MHz)	(dBµV)	(dB)	(dBµV/m)	(dBµV/m)	(dB)	
3172	54.61	-4.59	50.02	68.2	-18.18	peak
10523	50.31	4.21	54.52	68.2	-13.68	peak

Remark: Factor = Antenna Factor + Cable Loss – Pre-amplifier; Level = Reading + Factor; Margin = Level - Limit

Vertical:

Frequency	Meter Reading	Factor	Emission Level	Limits	Margin	Detector Type
(MHz)	(dBµV)	(dB)	(dBµV/m)	(dBµV/m)	(dB)	
3172	54.96	-4.59	50.37	68.2	-17.83	peak
10523	50.55	4.21	54.76	68.2	-13.44	peak

Remark: Factor = Antenna Factor + Cable Loss – Pre-amplifier; Level = Reading + Factor; Margin = Level - Limit

Remark:

- (1) Measuring frequencies from 1 GHz to the 40 GHz.
- (2) "F" denotes fundamental frequency; "H" denotes spurious frequency. "E" denotes band edge frequency.
- (3) * denotes emission frequency which appearing within the Restricted Bands specified in provision of 15.205, then the general radiated emission limits in 15.209 apply.
- (4) The emissions are attenuated more than 20dB below the permissible limits are not record in the report.
- (5) The IF bandwidth of EMI Test Receiver between 30MHz to 1GHz was 120KHz, 1 MHz for measuring above 1 GHz, below 30MHz was 10KHz.
- (6) When the test results of Peak Detected below the limits of Average Detected, the Average Detected is not need completed. For example: Top Channel at Fundamental 73.16dBuV/m(PK Value) <93.98(AV Limit), at harmonic 53.20 dBuV/m(PK Value) <54 dBuV/m(AV Limit), the Average Detected not need to completed.



5.8G 802.11ac80 Mode

All modes of operation were investigated and the worst-case of MIMO are reported.

CH 155

Horizontal:

Frequency (MHz)	Meter Reading (dBμV)	Factor (dB)	Emission Level (dBμV/m)	Limits (dBμV/m)	Margin (dB)	Detector Type
3368	55.37	-4.59	50.78	68.2	-17.42	peak
11096	50.92	4.21	55.13	74	-18.87	peak
11096	34.89	4.21	39.1	54	-14.9	AVG

Remark: Factor = Antenna Factor + Cable Loss – Pre-amplifier.

Vertical:

Frequency (MHz)	Meter Reading (dBμV)	Factor (dB)	Emission Level (dBμV/m)	Limits (dBμV/m)	Margin (dB)	Detector Type
3368	58.83	-4.59	54.24	68.2	-13.96	peak
11096	52.06	4.21	56.27	74	-17.73	peak
11096	43.83	4.21	48.04	54	-5.96	AVG

Remark: Factor = Antenna Factor + Cable Loss – Pre-amplifier.

Remark:

- (1) Measuring frequencies from 1 GHz to the 40 GHz.
- (2) "F" denotes fundamental frequency; "H" denotes spurious frequency. "E" denotes band edge frequency.
- (3) * denotes emission frequency which appearing within the Restricted Bands specified in provision of 15.205, then the general radiated emission limits in 15.209 apply.
- (4) The emissions are attenuated more than 20dB below the permissible limits are not record in the report.
- (5) The IF bandwidth of EMI Test Receiver between 30MHz to 1GHz was 120KHz, 1 MHz for measuring above 1 GHz, below 30MHz was 10KHz.
- (6) When the test results of Peak Detected below the limits of Average Detected, the Average Detected is not need completed. For example: Top Channel at Fundamental 73.16dBuV/m(PK Value) <93.98(AV Limit), at harmonic 53.20 dBuV/m(PK Value) <54 dBuV/m(AV Limit), the Average Detected not need to completed.



4.8. Frequency Stability Measurement

4.8.1. Test Specification

Test Requirement:	FCC Part15 Section 15.407(g)
Test Method:	ANSI C63.10: 2013
Limit:	The frequency tolerance shall be maintained within the band of operation frequency over a temperature variation of 0 degrees to 35 degrees C at normal supply voltage, and for a variation in the primary supply voltage from 85% to 115% of the rated supply voltage at a temperature of 20 degrees C.
Test Setup:	<pre> graph LR SA[Spectrum Analyzer] --- EUT[EUT] subgraph TC [Temperature Chamber] EUT end P[AC/DC Power supply] --- EUT </pre>
Test Procedure:	The EUT was placed inside the environmental test chamber and powered by nominal AC/DC voltage. b. Turn the EUT on and couple its output to a spectrum analyzer. c. Turn the EUT off and set the chamber to the highest temperature specified. d. Allow sufficient time (approximately 30 min) for the temperature of the chamber to stabilize. e. Repeat step 2 and 3 with the temperature chamber set to the lowest temperature. f. The test chamber was allowed to stabilize at +20 degree C for a minimum of 30 minutes. The supply voltage was then adjusted on the EUT from 85% to 115% and the frequency record.
Test Result:	PASS
Remark:	N/A



Test Result as follows:

Mode	Voltage (V)	FHL (5745MHz)	Deviation (KHz)	FHH (5825MHz)	Deviation (KHz)
5.8G Band	20.4V	5744.981	-19	5824.982	-18
	24.0V	5744.963	-37	5825.026	26
	27.6V	5744.988	-12	5824.979	-21

Mode	Temperature (°C)	FHL (5745MHz)	Deviation (KHz)	FHH (5825MHz)	Deviation (KHz)
5.8G Band	-30	5745.016	16	5825.023	23
	-20	5745.021	21	5825.007	7
	-10	5744.995	-5	5824.987	-13
	0	5744.984	-16	5824.969	-31
	10	5744.973	-27	5825.014	14
	20	5744.911	-89	5824.954	-46
	30	5745.016	16	5825.012	12
	40	5744.989	-11	5824.981	-19
	50	5744.977	-23	5825.022	22

The results shown in this test report refer only to the sample(s) tested unless otherwise stated and the sample(s) are retained for 30 days only. The document is issued by HUAK, this document cannot be reproduced except in full with our prior written permission. The more details and the authenticity of the report will be confirmed at <http://www.cer-mark.com>.

TEL : +86-755 2302 9901 FAX : +86-755 2302 9901 E-mail : service@cer-mark.com

Add: 1-2F., Building B2, Junfeng Zhongcheng Zhizao Innovation Park, Heping Community, Fuhai Street, Bao'an District, Shenzhen, Guangdong, China

4.9. Antenna Requirement

Standard Applicable

For intentional device, according to FCC 47 CFR Section 15.203, an intentional radiator shall be designed to ensure that no antenna other than that furnished by the responsible party shall be used with the device. And according to FCC 47 CFR Section 15.249, if transmitting antennas of directional gain greater than 6dBi are used, the power shall be reduced by the amount in dB that the directional gain of the antenna exceeds 6dBi.

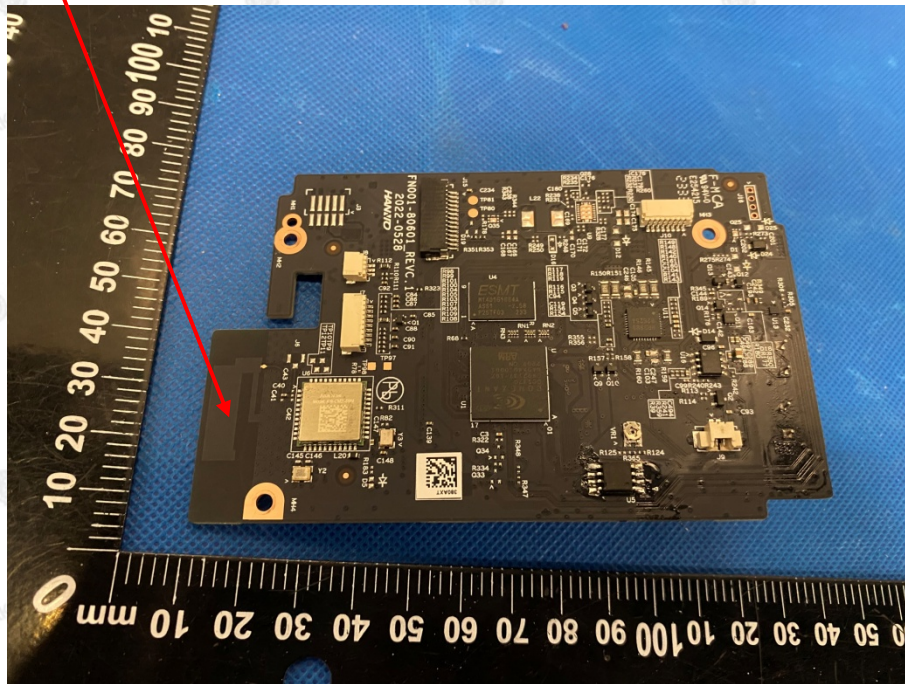
Refer to statement below for compliance.

The manufacturer may design the unit so that the user can replace a broken antenna, but the use of a standard antenna jack or electrical connector is prohibited. Further, this requirement does not apply to intentional radiators that must be professionally installed.

Antenna Connected Construction

The antenna used in this product is a PCB Antenna, need professional installation, not easy to remove. It conforms to the standard requirements. The directional gains of antenna used for transmitting is -1.6dBi

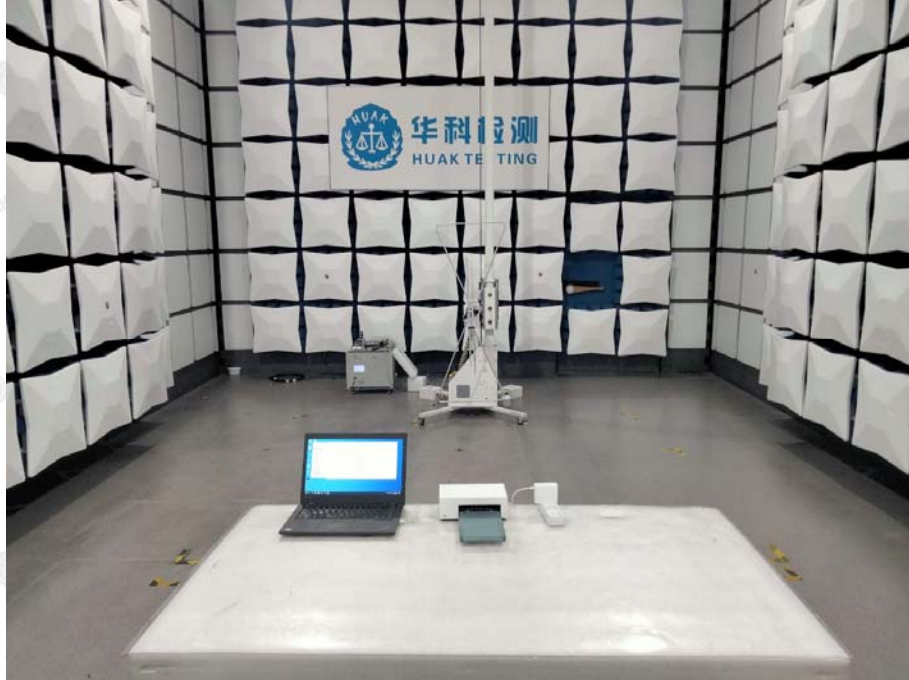
WIFI ANTENNA





5. Photographs of Test Setup

Radiated Emission



The results shown in this test report refer only to the sample(s) tested unless otherwise stated and the sample(s) are retained for 30 days only. The document is issued by HUAKE, this document cannot be reproduced except in full with our prior written permission. The more details and the authenticity of the report will be confirmed at <http://www.cer-mark.com>.

TEL : +86-755 2302 9901 FAX : +86-755 2302 9901 E-mail : service@cer-mark.com

Address: 1-2F., Building B2, Junfeng Zhongcheng Zhizao Innovation Park, Heping Community, Fuhai Street, Bao'an District, Shenzhen, Guangdong, China



Conducted Emission



The results shown in this test report refer only to the sample(s) tested unless otherwise stated and the sample(s) are retained for 30 days only. The document is issued by HUAK, this document cannot be reproduced except in full with our prior written permission. The more details and the authenticity of the report will be confirmed at <http://www.cer-mark.com>.

TEL : +86-755 2302 9901 FAX : +86-755 2302 9901 E-mail : service@cer-mark.com

Addr: 1-2F., Building B2, Junfeng Zhongcheng Zhizao Innovation Park, Heping Community, Fuhai Street, Bao'an District, Shenzhen, Guangdong, China



6. Photos of the EUT

Reference to the report: ANNEX A of external photos and ANNEX B of internal photos

-----End of test report-----

QUALIFICATION