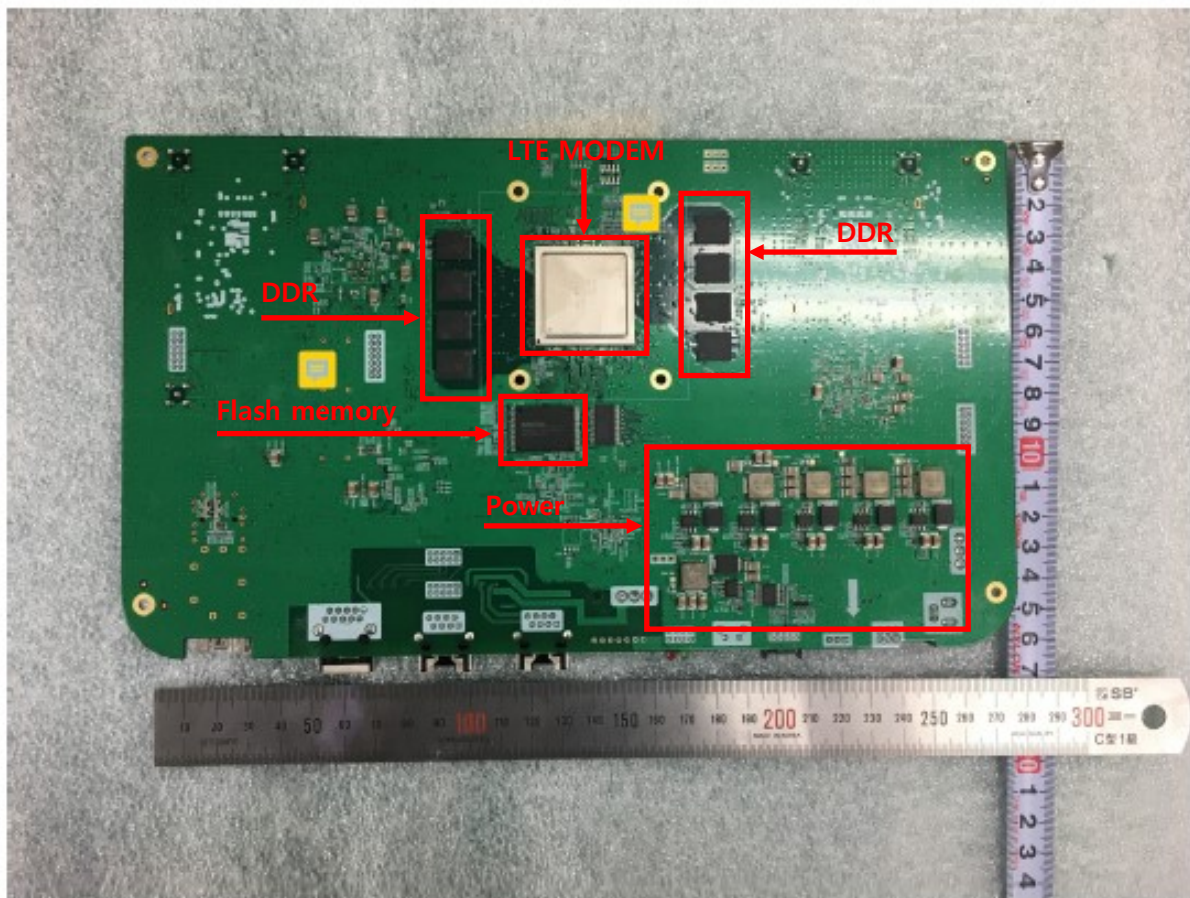


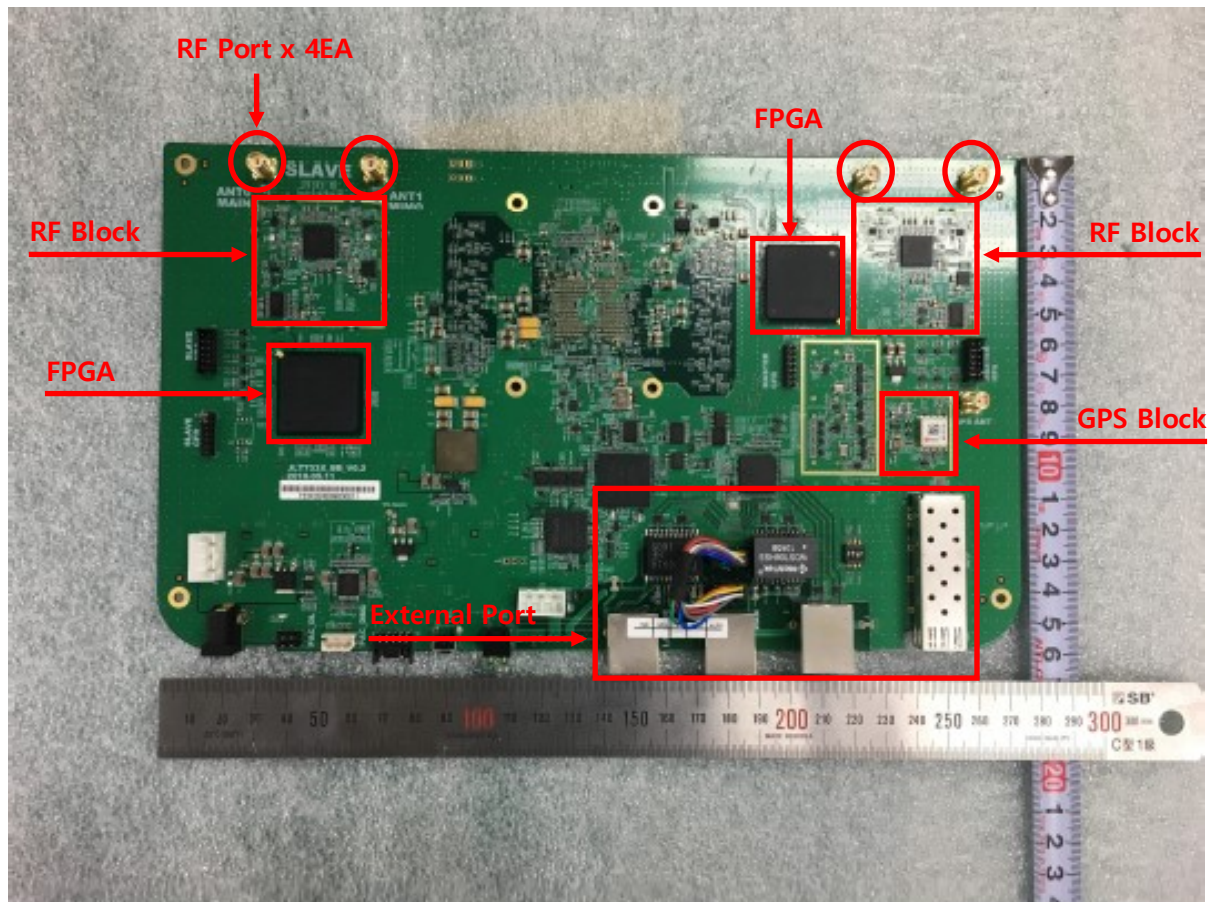
## 1. PCB Bottom

It consists of LTE MODEM, DDR, Flash memory and power circuit.



## 2. PCB Top

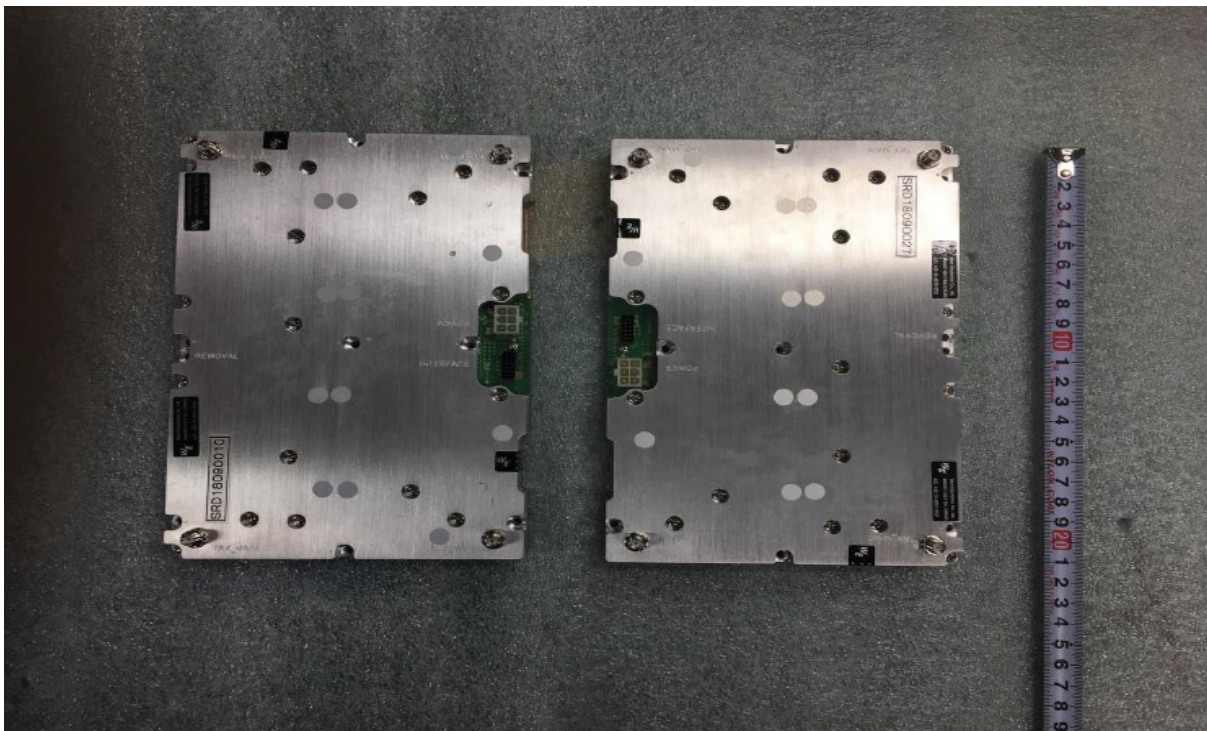
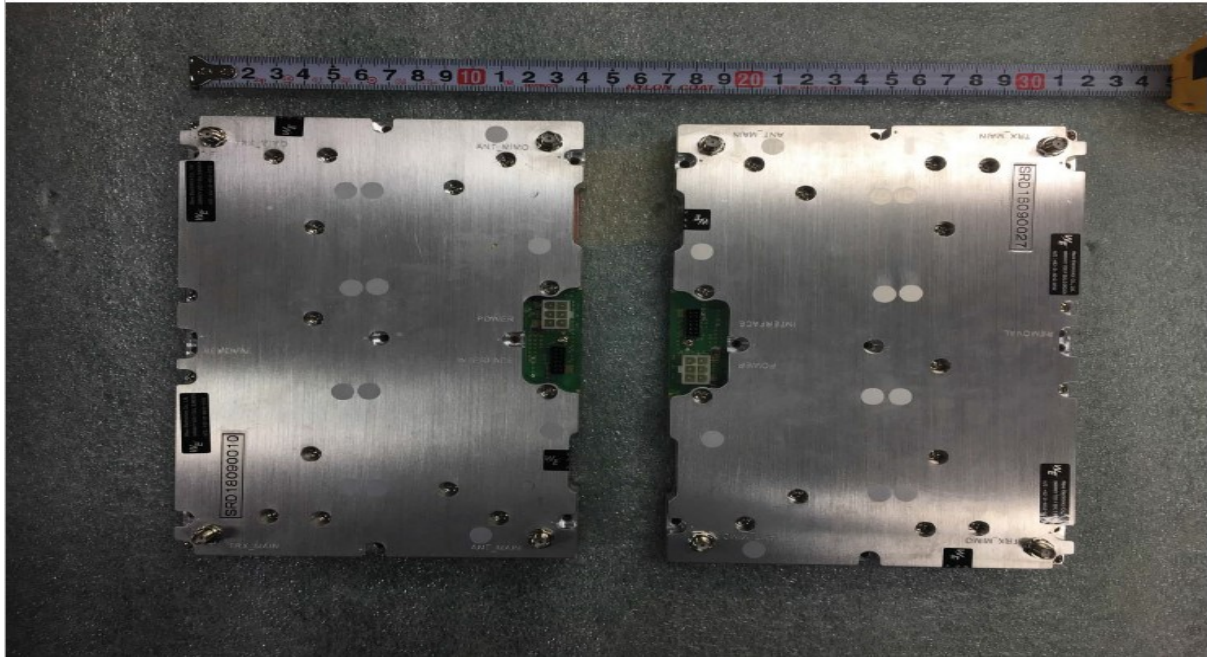
It consists of RF, GPS, Ethernet, FPGA, L2 Switch, etc.





### 3. HPA (High Power Amplifier) Module

HPA amplifies the DL signal and sends it to the antenna, and on the contrary, amplifies the UL signal and sends it to the RF Block.



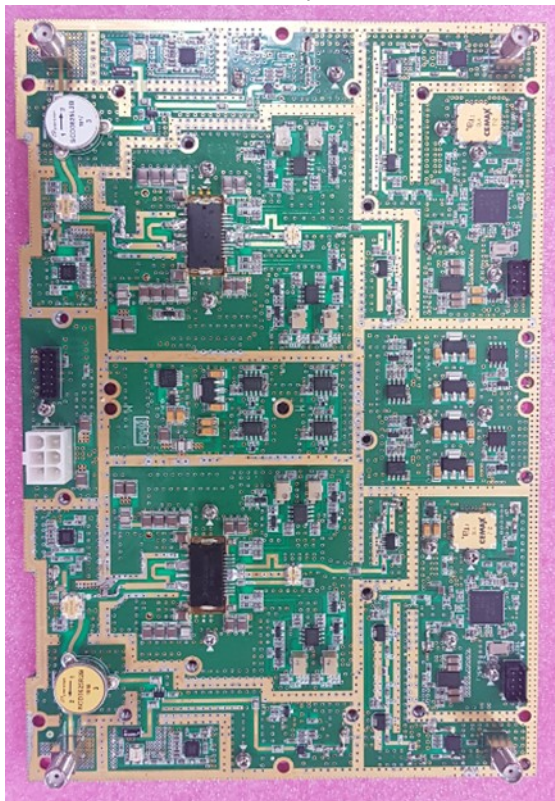
HPA top



bottom



HPA Top Side



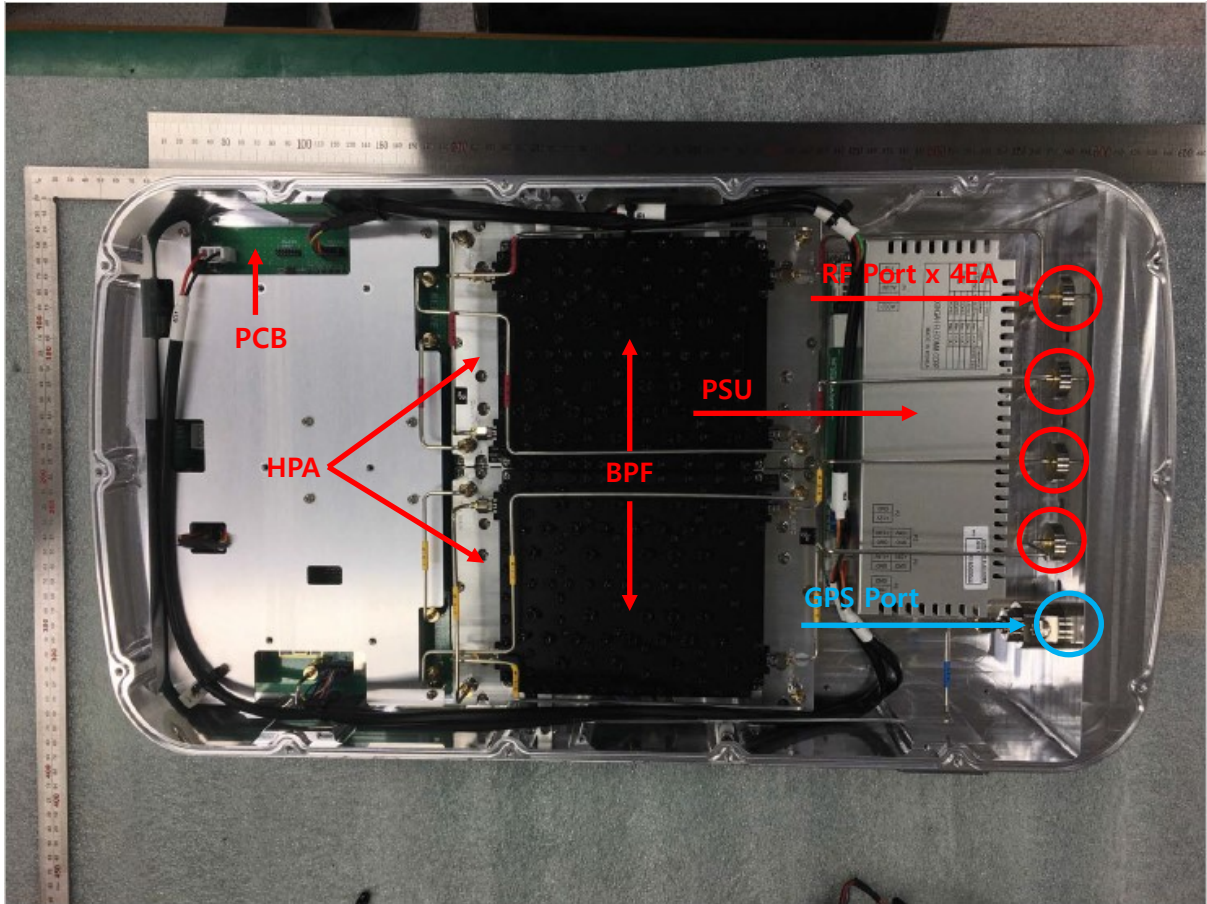
733 Amplifier Side



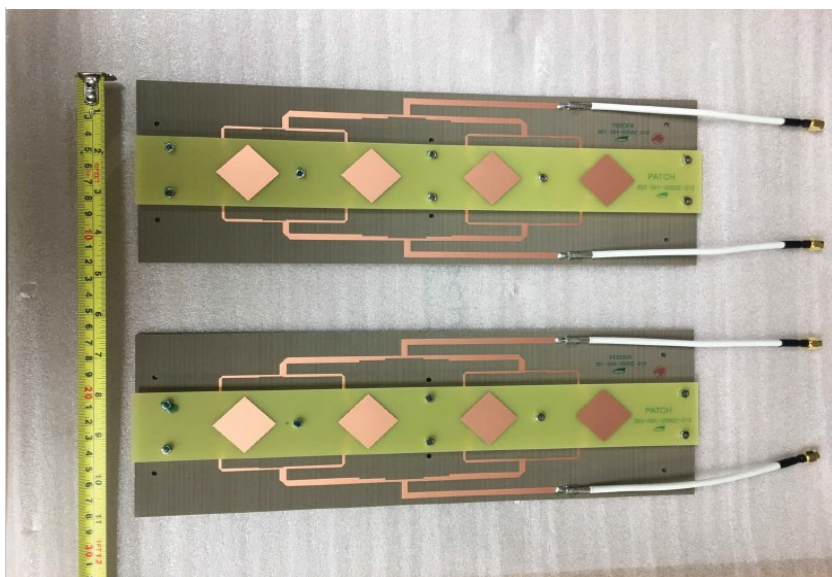


#### 4. Front Side

Open the top cover of the device, you will find PCB, HPA, BPF, PSU.



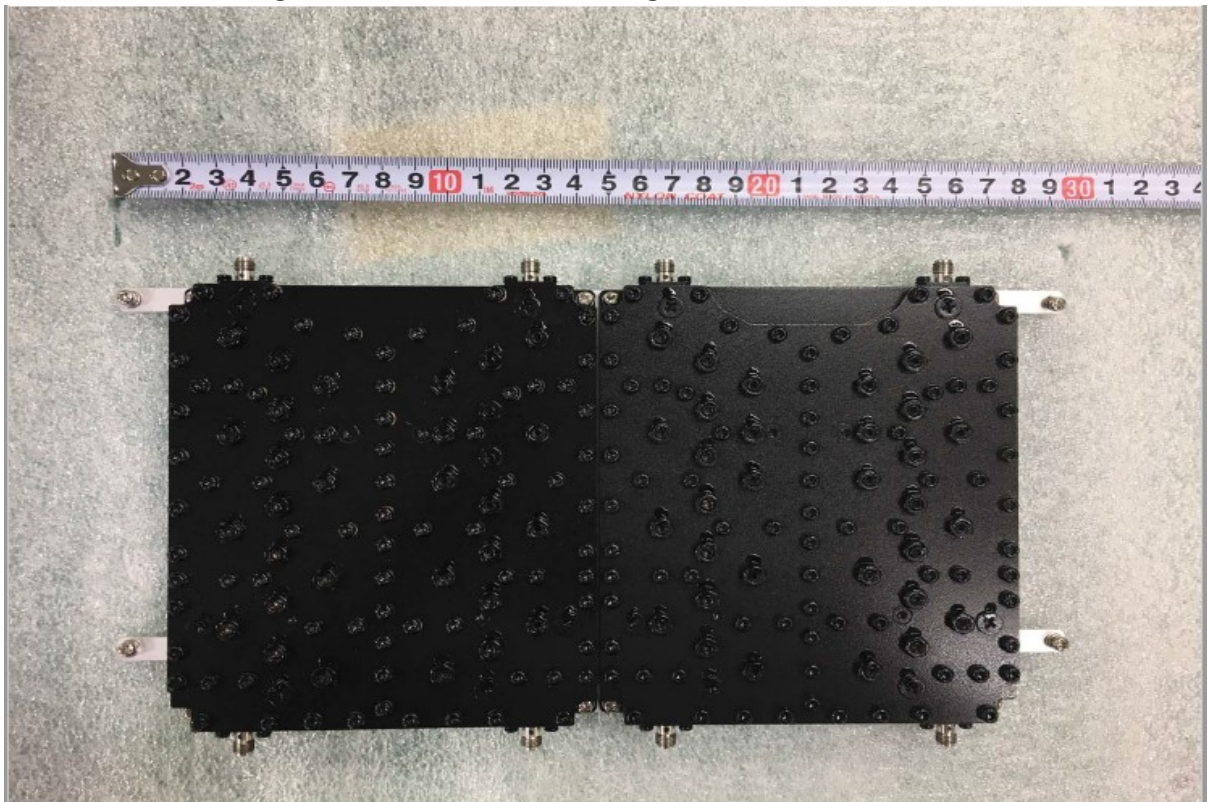
Antenna structure:



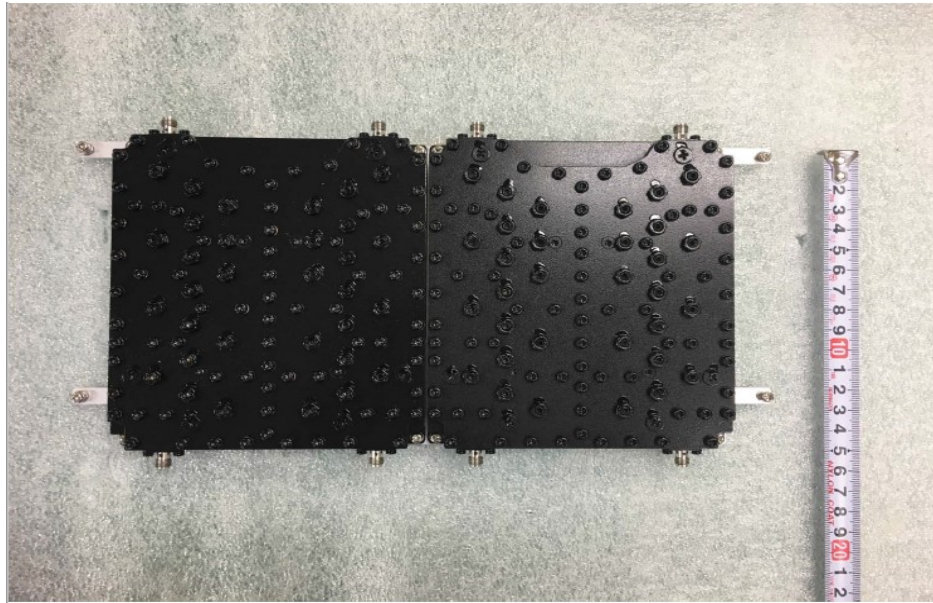


## 6. BPF (Band Pass Filter)

Reduces unwanted signals other than the desired signal.







## 7. GPS Antenna

