

EN

WAIWAIBEAR Fast wireless charger PRODUCT MANUAL

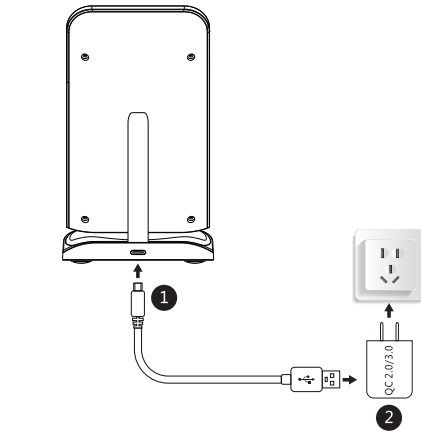
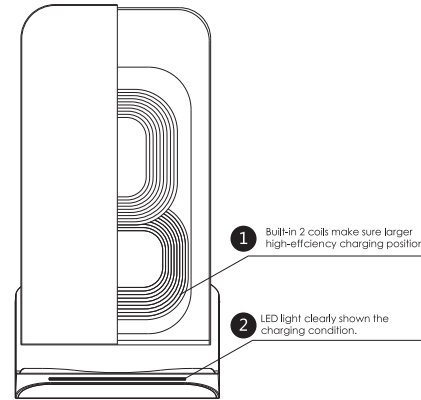
From professional quality
Value from innovation

CE FC RoHS

MADE IN CHINA

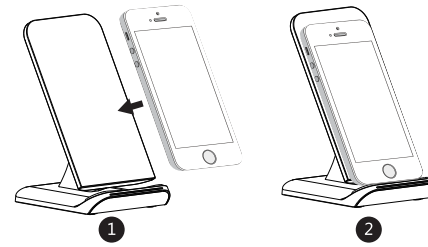
Product Introduction

Thanks for choosing us!
This is a wireless charger for smartphone that allows enjoy the fun of digital products easily. Please read the manual carefully before using the product, and keep properly for checking.



1. Plug the power adapter (QC2.0/3.0 adapter) into the socket.
2. Connect One end of the USB power cord to the adapter and the other end to the charging

NOTE: Charging pad controlled by smart chips, long-term standby can be assured.



1. Connect the power supply, the wireless charger indicator turns to blue and keeps always on, then go to standby.
2. Put the wireless charging mobile phone on the wireless charger; the green LED indicator is always on and starts to charge. When the mobile phone is fully charged, the blue light turns on for 5 seconds and then off.
3. When a metal foreign object is placed in the charging area of the wireless charger, the FOD function is activated, and the blue indicator light flashes 1 second, until the charging fault is removed.

note: only Samsung mobile phones conform to the full recharge feedback now. Feedback as above, another phone will not notice after full recharge.

Specification

Input	DC5.0V=2.0A DC9.0V=1.8A
Frequency	110-205KHz
Efficiency	≥72%
Size	70mm*120mm*80mm

Attention

1. Do not squeeze or collide.
2. Do not disassemble or throw into fire or water, to avoid causing a short circuit or leakage.
3. Do not use the wireless charger in high temperature, humidity or corrosive environment, avoid damaging the circuit and avoid leakage.
4. Do not close with magnetic stripe or chip cards (ID card, bank card, etc.) to avoid magnetic failure.
5. Please keep the distance at least 20cm between implantable medical devices (pacemakers, implantable cochlear, etc.) and the wireless charger, to avoid potential interference with the medical device.
6. Take care of the children, to ensure that they won't play the wireless charger as a toy, to avoid unnecessary accidents.

note: no power adapter, if you need, please purchase separately.

FCC Statement

This device complies with Part 15 of the FCC rules. Operation is subject to the following two conditions: 1) this device may not cause harmful interference, and 2) this device must accept any interference received, including interference that may cause undesired operation. Note: This equipment has been tested and found to comply with the limits for a Class B digital device, pursuant to part 15 of the FCC Rules. These limits are designed to provide reasonable protection against harmful interference in a residential installation. This equipment generates uses and can radiate radio frequency energy and, if not installed and used in accordance with the instructions, may cause harmful interference to radio communications. However, there is no guarantee that interference will not occur in particular installation. If this equipment does cause harmful interference to radio or television reception, which can be determined by turning the equipment off and on, the user is encouraged to try to correct the interference by one or more of the following measures:

- Reorient or relocate the receiving antenna.
- Increase the separation between the equipment and receiver.
- Connect the equipment into an outlet on a circuit different from that to which the receiver is connected.
- Consult the dealer or an experienced radio/TV technician for help.

Changes or modifications not expressly approved by the party responsible for compliance could void the user's authority to operate the equipment.

Radiation Exposure Statement
This device complies with FCC RF radiation exposure limits set forth for an uncontrolled environment. This transmitter must not be co-located or operating in conjunction with any other antenna or transmitter. During the operation of device a distance of 15 cm surrounding the device and 20 cm above the top surface of the device must be respected.