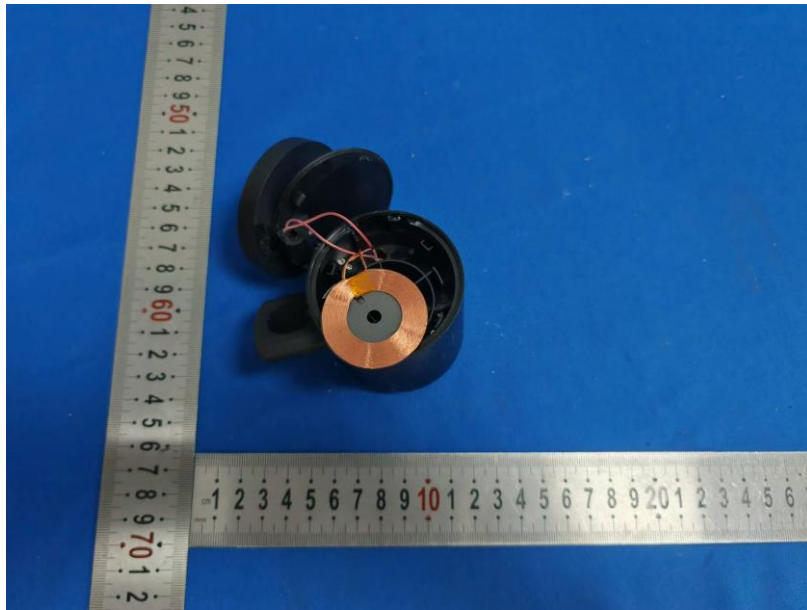


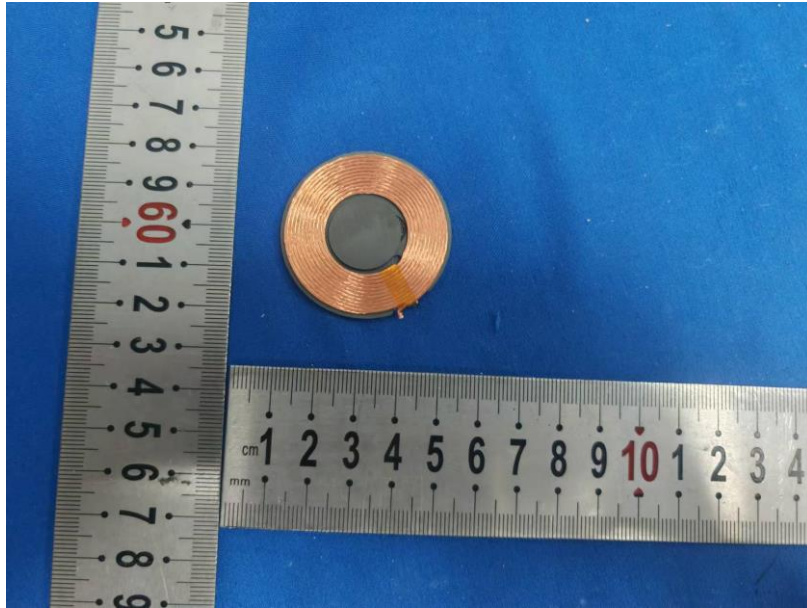
ANT PHTOT



L	W	H
45mm±0.2	45mm±0.2	0.2mm±0.1



L	W	H
20mm±0.2	20mm±0.2	0.2mm±0.1



L	W	H
36mm±0.2	36mm±0.2	0.2mm±0.1

All measurements were performed radiated and therefore additional antenna gain documentation is not required.