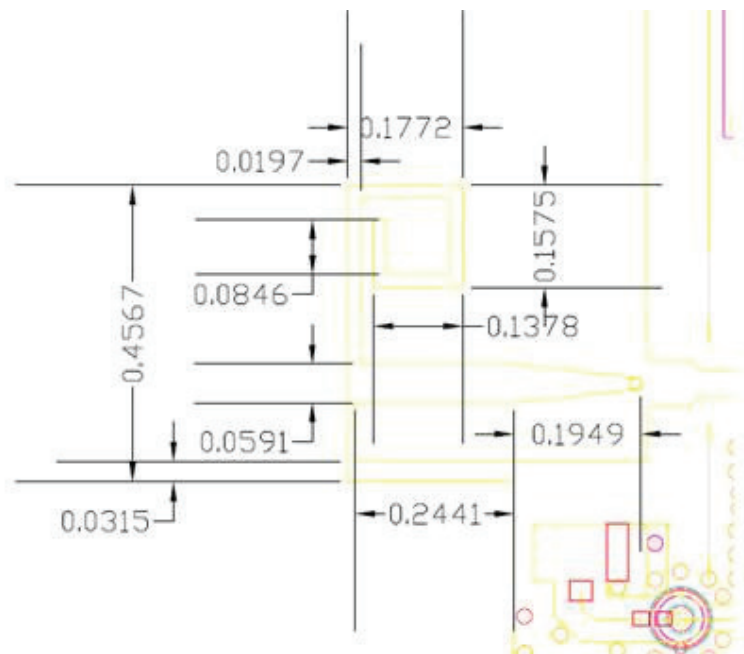
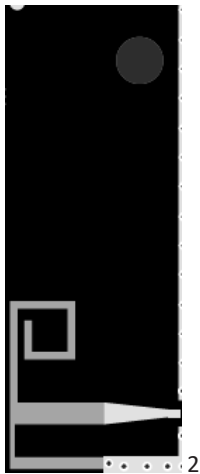


heory of Operation

- Frequency Range: 2390-2500MHz; Frequency-Hop
- ping Spread Spectrum (FHSS): No; TX & RX: yes;
- Type Of Modulation: OFDM/DSSS;
Channel Separation: Overlap;
- Occupied Bandwidth: 20MHz only;
- Duty cycle: <50%;
- Antenna Gain: 2.4G/4dBi;
- Antenna input impedance: 50 Ohm.
-

2.4G PCB diagram printed antenna



2.4GHz Total Efficiency/Gain:

Frequency (MHz)	Effi (%)	Gain(dBi)
2390	61.72	3.77
2400	59.63	3.59
2410	51.62	3.02
2420	53.66	3.03
2430	58.72	3.2
2440	59.58	3.31
2450	64.77	3.67
2460	66.76	3.87
2470	71.63	3.21
2480	65.92	3.85
2490	65.33	3.8
2500	68.98	4

PIFA Antenna (2.4G)

