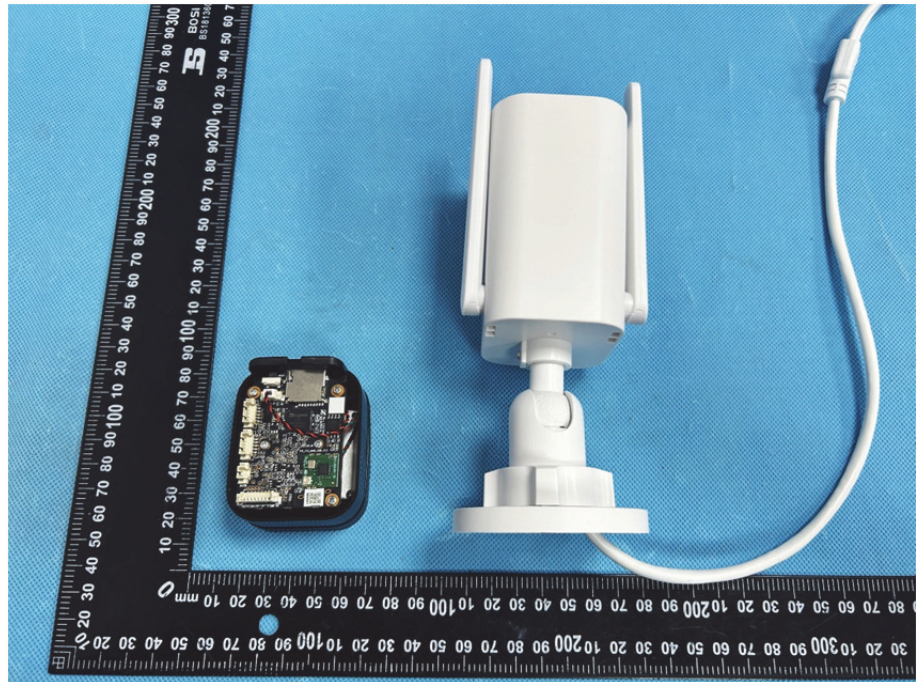
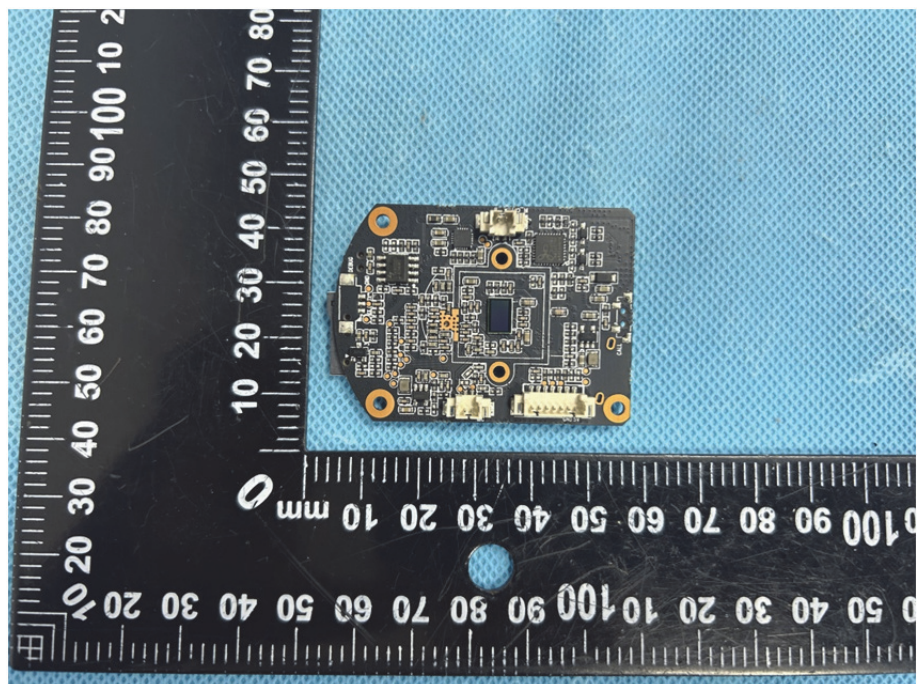


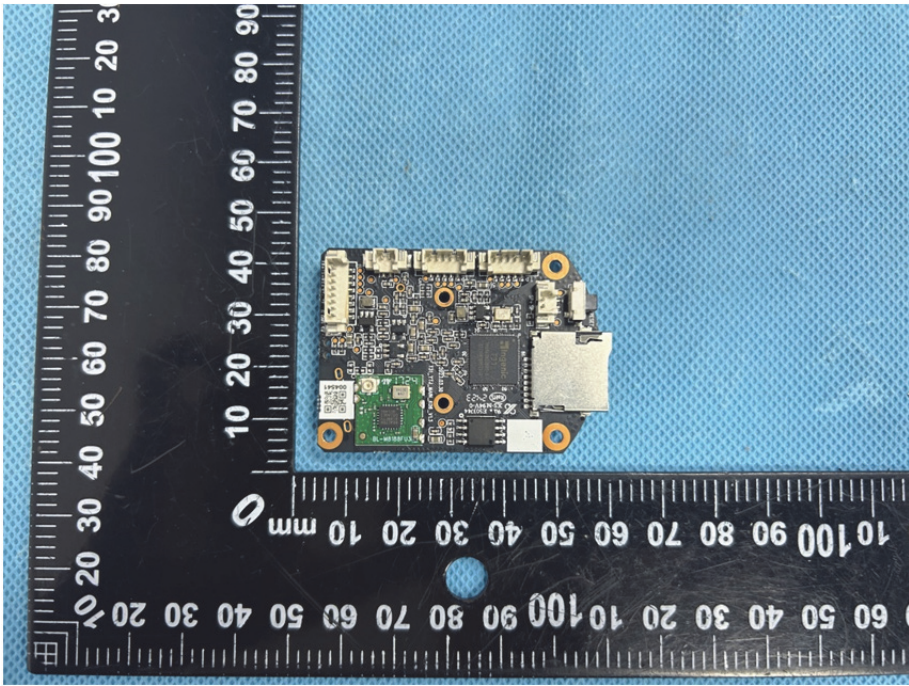
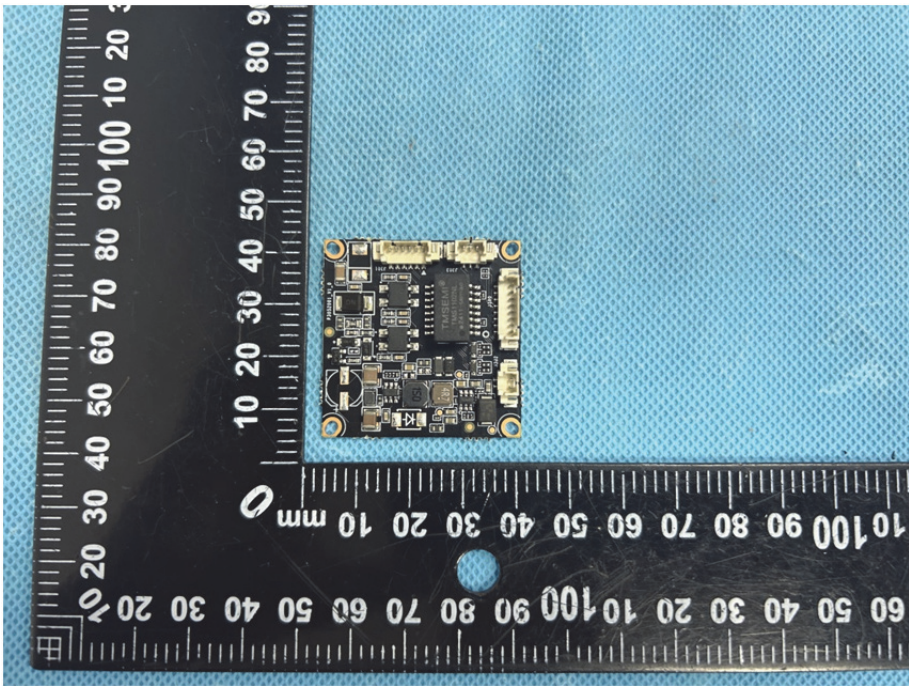
EXHIBIT 3 - EUT INTERNAL PHOTOGRAPHS

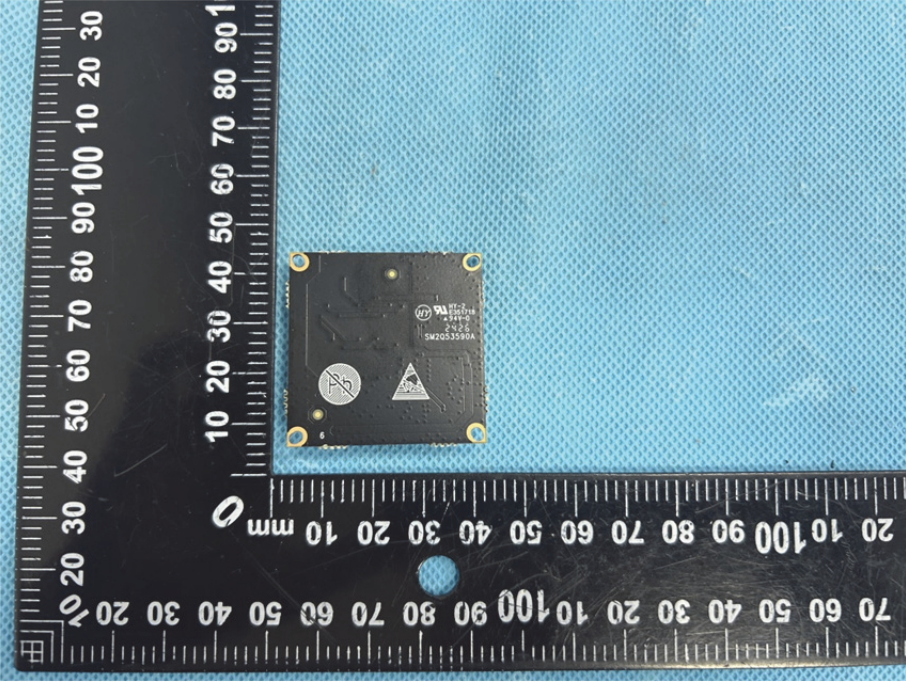

EUT Housing and Board View 1



Solder Board-Component View 1



<p>Solder Board-Component View 2</p>	 A photograph showing a small, rectangular green printed circuit board (PCB) component. The board is populated with various electronic components, including a central microcontroller, several integrated circuits, and surface-mount components. It features a multi-pin connector on the left side and a larger connector on the right. The board is placed on a blue textured surface. A black L-shaped ruler is positioned around the board for scale, with markings in millimeters. The ruler shows the board is approximately 40mm wide and 30mm high.
<p>Solder Board-Component View 3</p>	 A photograph showing the same green PCB component from a different perspective. This view shows the top surface of the board, highlighting the central microcontroller and the surrounding components. The board is placed on the same blue textured surface. A black L-shaped ruler is positioned around the board for scale, with markings in millimeters. The ruler shows the board is approximately 40mm wide and 30mm high.

<p>Solder Board-Component View 4</p>	 <p>A photograph of a small, square, black solder board component. The component is mounted on a blue textured surface. It features four gold-colored solder points at the corners. A black ruler is placed to the left and bottom of the component for scale. The ruler shows measurements in millimeters, with the component's width being approximately 25 mm and its height approximately 25 mm. The component has some markings, including a circular logo with a triangle and the text 'WALTEK' and 'SM2053590A'.</p>
<p>Antenna View</p>	 <p>A photograph of a white antenna assembly. The antenna is mounted on a white plastic base. A red box highlights a vertical slot on the side of the antenna, which is labeled 'WIFI Ant.' with a red line pointing to it. A white cable is attached to the base of the antenna. A black ruler is placed to the left of the antenna for scale, showing measurements in millimeters. The antenna's height is approximately 100 mm.</p>