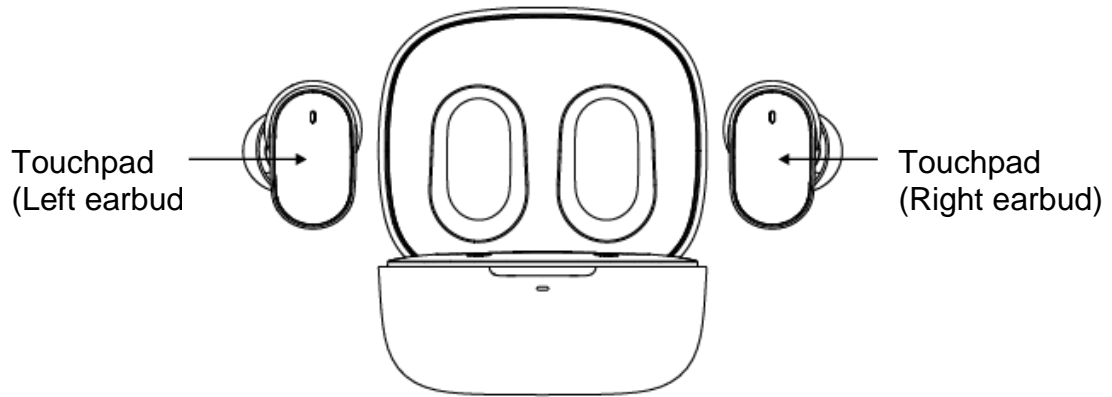


HTC True Wireless Earbuds 9

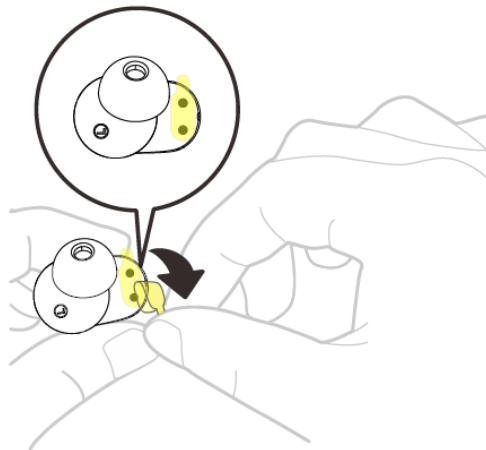
Quick Start Guide

Model HTC TWS9



What's in the box

- 2 Earbuds
- Charging case
- Quick Start Guide
- USB Type-C cable
- 2 pairs of rubber tips (large and small)
- Warranty card



Important:
Before use, make sure to tear off the protective film.

Things to keep in mind with HTC True Wireless Earbuds 9

- HTC True Wireless Earbuds 9 should not be used in extreme temperatures.
- Before using the charging case for the first time, make sure to charge it using a 5 volt charger

Pairing HTC True Wireless Earbuds 9 with your phone

The earbuds will turn on automatically when taken out of the charging case. Here's how to pair them with your phone:

1. On your phone, go to Settings, turn Bluetooth on, and then pair with "**HTC TWS9**". Check your phone user guide to find out how to access Bluetooth settings.

Note:

- If you don't see the earbuds shown in the list, you can reset them by quickly tapping 5 times on either earbud. The LED on the earbuds will flash red several times. Put the earbuds back in the charging case to complete the factory reset.
 - If pairing fails, put the earbuds back in the case and try again.
 - When the earbuds are on and haven't connected to any mobile device, they will continue to search for devices. The earbuds will turn off automatically after 5 minutes.
2. Once paired, the earbuds will automatically connect to your mobile device when taken out of the charging case.
 3. When you're not using the earbuds, place them in the charging case to charge them. Recharge the case with a 5V charger periodically.

Controls

Power on/off	Earbuds will turn on when removed from the charging case and turn off when they're put back in the case.
Play next	Double-tap the right earbud.
Play previous	Double-tap the left earbud.
Play / Pause	Tap either earbud.
Game mode on/off	Tap and hold either earbud for 2 seconds.
Answer call / End call	Tap either earbud.
Decline call	Tap and hold either earbud for 2 seconds.
Assistant	Triple-tap either earbud.

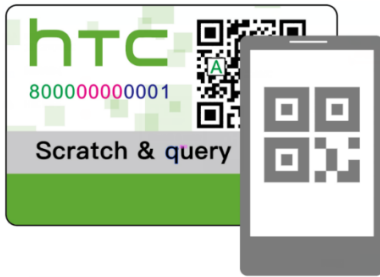
LED notifications

Charging case LED	<ul style="list-style-type: none">● Flashing blue: Connected to power and charging● Blue: Case is fully charged● Flashing red: Low battery warning● Red: Charging the earbuds● Off: Earbuds are fully charged
Earbud LED	<ul style="list-style-type: none">● Red: Charging● Flashing blue: Pairing● Blue: Game mode on● Off: Fully charged or paired with mobile device

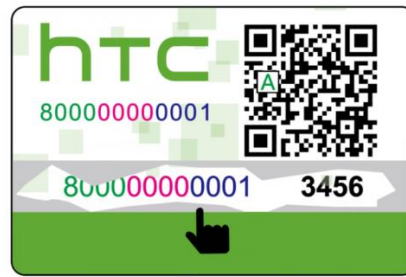
Technical specifications

Bluetooth version	5.3
Sweat and water resistant	IPX4
Bluetooth range	≤ 10 m
Play time	Approx. 6.5 hours (Volume level 50%)
Talk time	Approx. 3.5 hours (Volume level 50%)
Standby time	Up to 70 hours
Earbud charges (when case is fully charged)	Around 2 charges
Earbud battery capacity	40 mAh
Charging case battery capacity	300 mAh
Charging case input voltage	5V
Charging interface	Type-C
Charging case power input rating	5V / 300 mA
Net weight (single earbud)	5g
Net weight (both earbuds with case)	44g

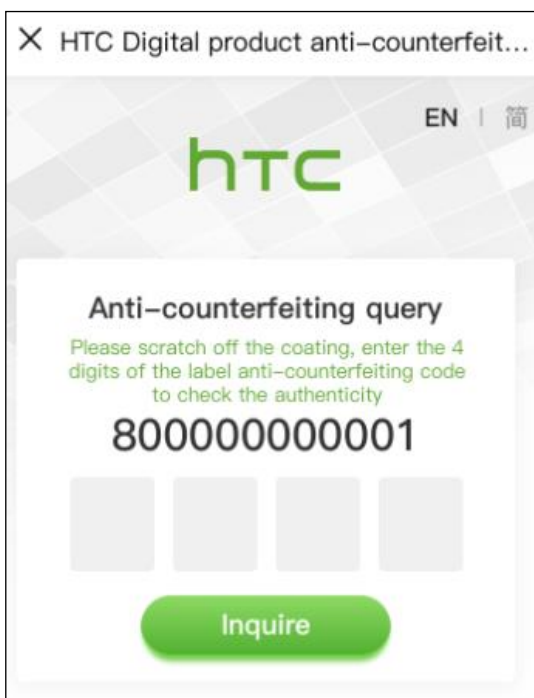
Checking product authenticity



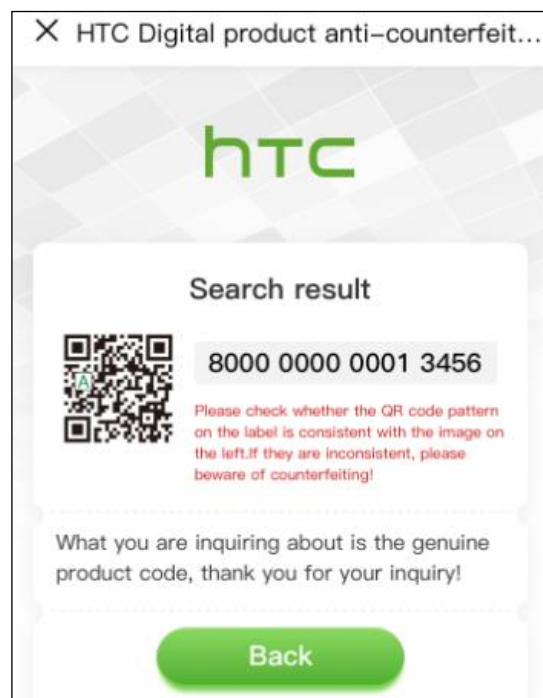
1. Scan the QR code on the package with your phone.



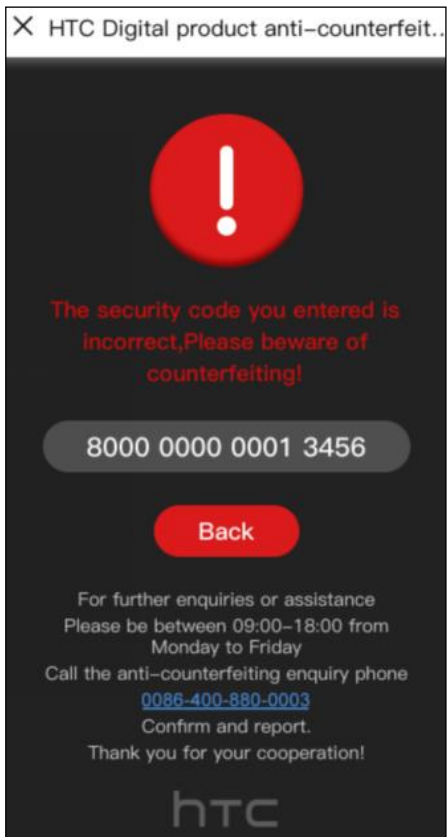
2. Scratch off the coating. You'll then see a code.



3. On your phone, enter the last four digits of the code.



4. If the code is authentic, the Search results screen will show that you have a genuine product code.



Warning: If you see the above screen, beware of counterfeiting.

FCC Warning

FCC ID: 2AVFE-HTCTWS9

This device complies with Part 15 of the FCC Rules. Operation is subject to the following two conditions:

- (1) This device may not cause harmful interference.
- (2) This device must accept any interference received, including interference that may cause undesired operation.

Note:

- This equipment has been tested and found to comply with the limits for a Class B digital device, pursuant to part 15 of the FCC Rules. These limits are designed to provide reasonable protection against harmful interference in a residential installation. This equipment generates uses and can radiate radio frequency energy and, if not installed and used in accordance with the instructions, may cause harmful interference to radio communications. However, there is no guarantee that interference will not occur in a particular installation. If this equipment does cause harmful interference to radio or television reception, which can be determined by turning the equipment off and on, the user is encouraged to try to correct the interference by one or more of the following measures:
 - Reorient or relocate the receiving antenna.
 - Increase the separation between the equipment and receiver.
 - Connect the equipment into an outlet on a circuit different from that to which the receiver is connected.
 - Consult the dealer or an experienced radio/TV technician for help.
- Any changes or modifications to this unit not expressly approved by the party responsible for compliance could void the user's authority to operate the equipment.

RF exposure statement

This equipment complies with the FCC radiation exposure limits set forth for an uncontrolled environment. This transmitter must not be co-located or operating in conjunction with any other antenna or transmitter.



Legal notice

Trademarks and permissions:

HTC and the HTC logo are trademarks of HTC Corporation and used under license by Water World International Industrial Limited.

The Bluetooth® word mark and logos are registered trademarks owned by Bluetooth SIG, Inc.

Copyright © 2022 Water World International Industrial Limited. All rights reserved.

THIS DOCUMENT IS FOR INFORMATION PURPOSES ONLY, AND DOES NOT CONSTITUTE ANY KIND OF WARRANTIES.