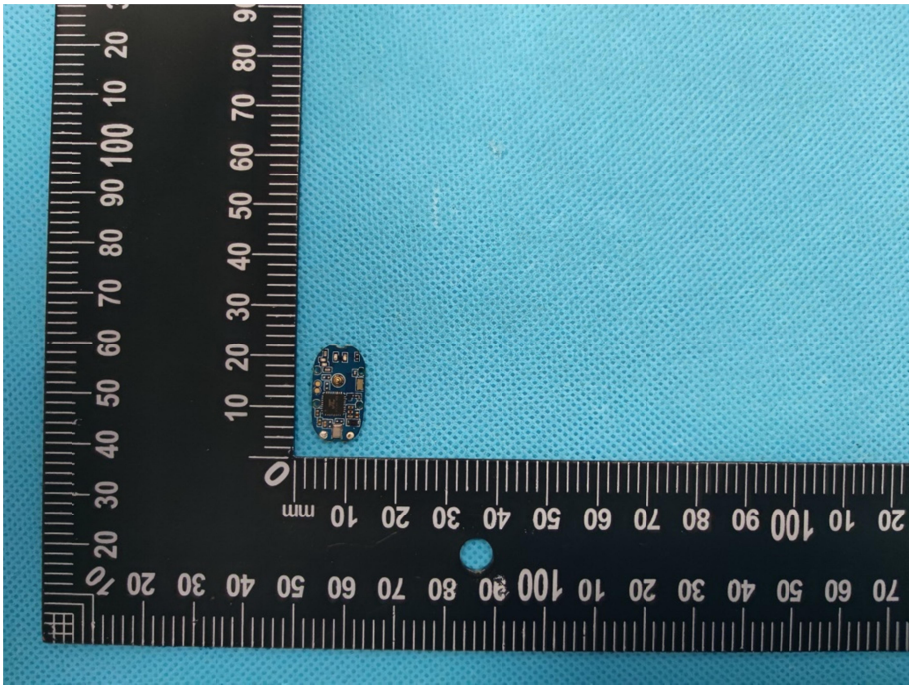
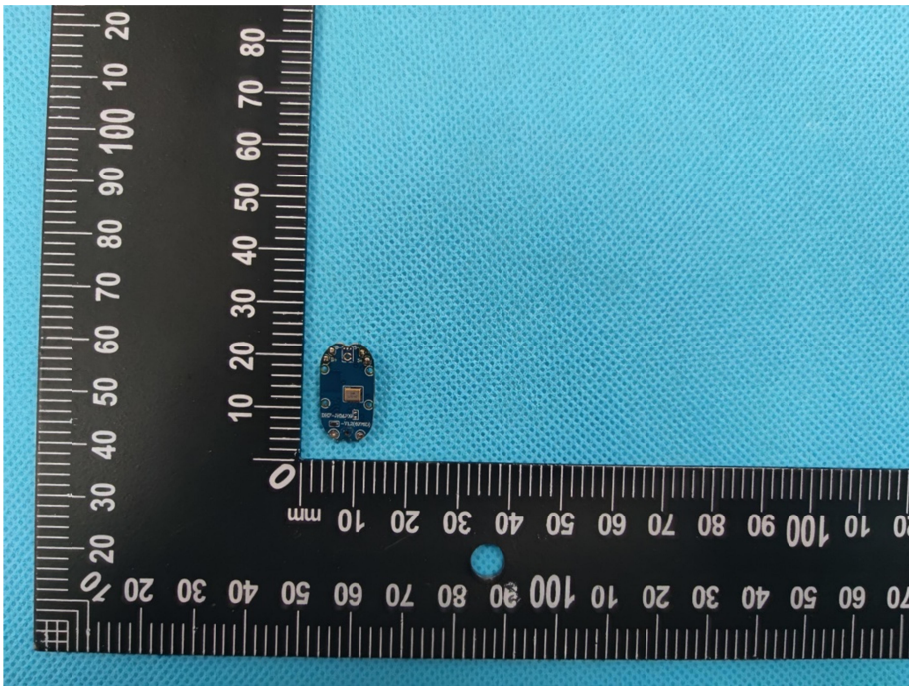
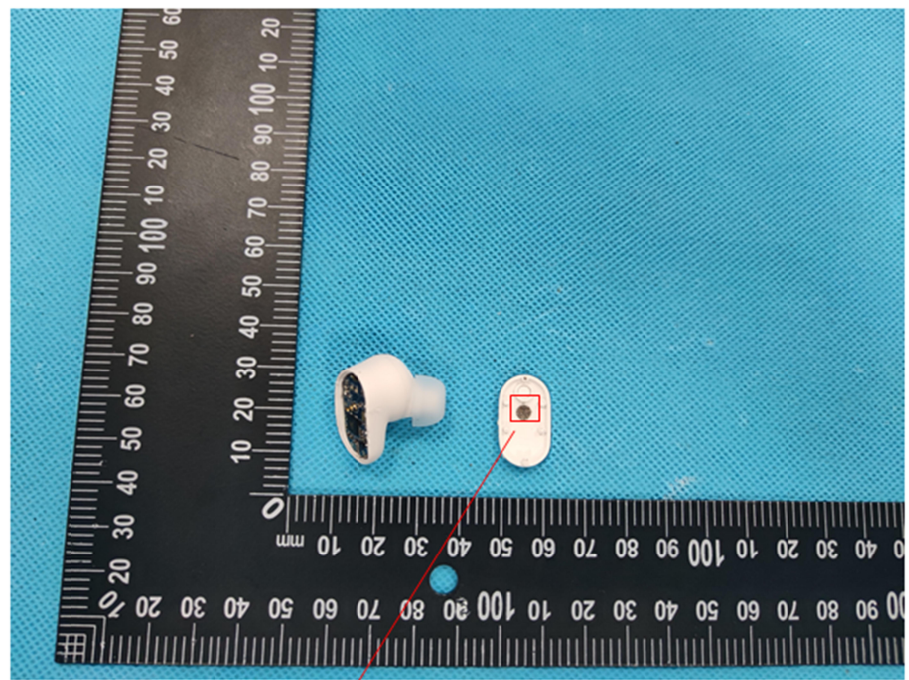


<p style="text-align: center;">Solder Board-Component View 3</p>	 A photograph showing a small, rectangular blue printed circuit board (PCB) component mounted on a larger blue PCB. The component is positioned near a black L-shaped ruler with white markings in millimeters. The ruler shows the component is approximately 10 mm wide and 15 mm high. The background is a light blue textured surface.
<p style="text-align: center;">Solder Board-Component View 4</p>	 A photograph showing the same small, rectangular blue PCB component mounted on a larger blue PCB, similar to View 3. The component is positioned near a black L-shaped ruler with white markings in millimeters. The ruler shows the component is approximately 10 mm wide and 15 mm high. The background is a light blue textured surface.

Antenna View



BT Antenna