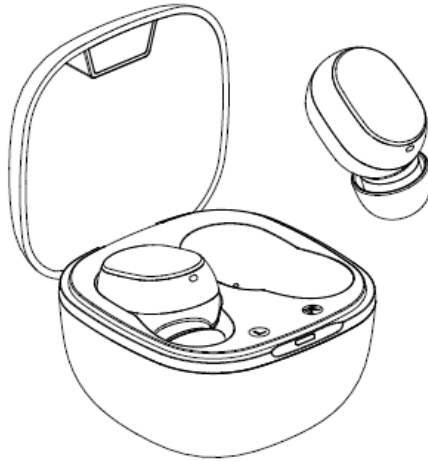


# HTC True Wireless Earbuds 2

## Quick Start Guide

### Model HTC TWS3



#### What's in the box

- Earbuds x2
- Charging case x1
- Quick Start Guide x1
- USB type-c cable x1
- Rubber tips x2(Large, Small)

#### Things to keep in mind with HTC True Wireless Earbuds

- HTC True Wireless Earbuds 2 should not be used in extreme temperatures.
- Make sure to use a 5 volt charger and charge the batteries before use.

#### Pairing HTC True Wireless Earbuds 2 with your phone

1. Turn on the earbuds by taking them out of the case. The LEDs on each earbud will flash red and blue.
2. On your phone, find Bluetooth settings, make sure Bluetooth is **ON**, and pair with " HTC TWS3". Consult your phone user guide for details.

#### Tip:

- If you don't see the headphones on the list, you can reset the headphones by tapping both earbuds 5 times.
  - If pairing fails, put the earbuds back in the case and start again.
3. Once paired, earbuds will automatically connect when taken out of the case.

4. When you're done, put the earbuds back in the case to turn them off and charge them. Make sure to recharge the case periodically.

#### Controls:

<b>Power on</b>	Earbuds will turn on when removed from charging case.
<b>Power off</b>	Earbuds will turn off when put back in the charging case.
<b>Automatically power off</b>	If earbuds are removed from charging case and don't pair other any device ,after 5 minutes ,it will turn off automatically.
<b>Play next</b>	Tap and hold the right earbud for 2 seconds.
<b>Play previous</b>	Tap and hold the left earbud for 2 seconds.
<b>Play / Pause</b>	Tap either earbud.
<b>Volume increase</b>	Tap left earbud twice quickly.
<b>Volume decrease</b>	Tap right earbud twice quickly.
<b>Answer call / End call</b>	Tap either earbud.
<b>Decline call</b>	Tap and hold either earbud for 2 seconds.
<b>Assistant</b>	Triple-tap either earbud.

#### LED notifications:

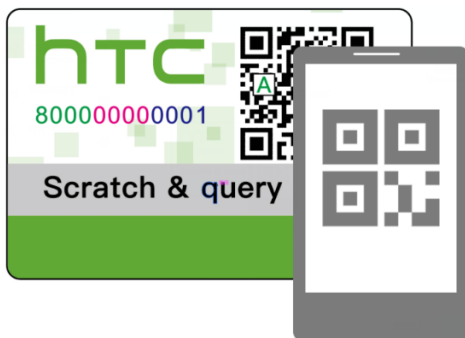
Charging case LED	<ul style="list-style-type: none"> <li>● <b>Flashing blue:</b> Connected to power and charging</li> <li>● <b>Blue:</b> Charging complete</li> <li>● <b>Flashing red:</b> Low battery warning</li> </ul>
Earbud LED	<ul style="list-style-type: none"> <li>● <b>Red:</b> Charging</li> <li>● <b>Red off:</b> Fully charged</li> <li>● <b>Flashing red and blue:</b> Pairing</li> <li>● <b>Off:</b> Connected</li> </ul>

#### Technical specifications:

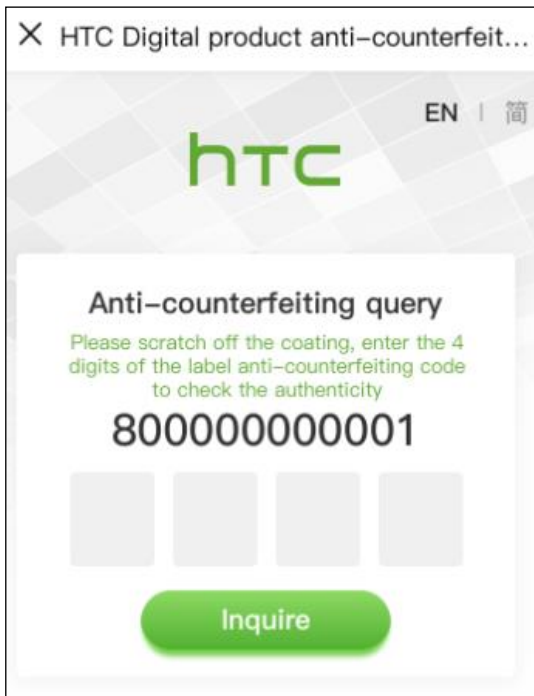
Bluetooth version	5.1
Bluetooth range	≤10 m
Speaker frequency response	100 Hz - 10 kHz
Play time	Apr.8 hours (Volume level

	50%)
Talk time	Appr.6 hours (Volume level 50%)
Standby time	Appr.100 hours
Earbud charges (when case is fully charged)	2 charges
Earbud battery capacity	50 mAh
Charging case battery capacity	500 mAh
Charging case input voltage	5V
Charging interface	Type-C
Charging case power input rating	5V / 320 mA
Net weight (single earbud)	4.4 g
Net weight (both earbuds with case)	37g

### Checking product authenticity

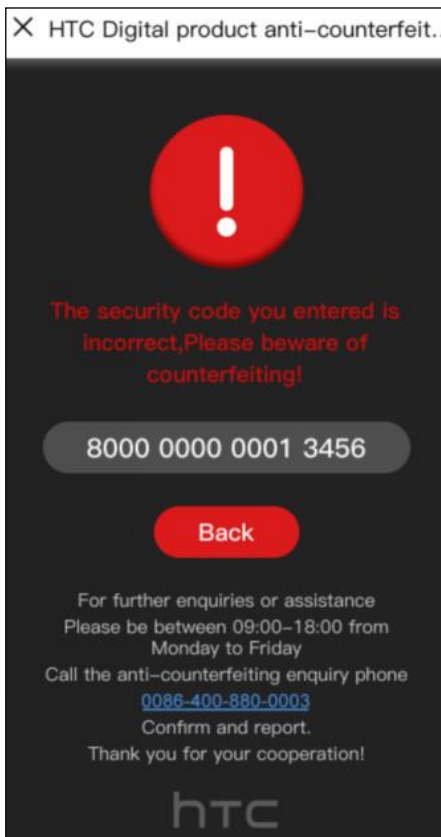


1. Scan the QR code on the package with your phone.
2. Scratch off the coating. You'll then see a code.



3. On your phone, enter the last four digits of the code.

4. If the code is authentic, the Search results screen will show that you have a genuine product code.



**Warning:** If you see the above screen, beware of counterfeiting.



## **Legal notice**

Trademarks and permissions:

HTC and the HTC logo are trademarks of HTC Corporation and used under license by Fortune Ship International Industrial Limited.

The Bluetooth® word mark and logos are registered trademarks owned by Bluetooth SIG, Inc.

Copyright © 2021 Fortune Ship International Industrial Limited. All rights reserved.

**THIS DOCUMENT IS FOR INFORMATION PURPOSES ONLY, AND DOES NOT CONSTITUTE ANY KIND OF WARRANTIES.**

## **FCC Warning**

FCC ID: 2AVFE-HTCTWS3

This device complies with Part 15 of the FCC Rules. Operation is subject to the following two conditions:

- (1) This device may not cause harmful interference.
- (2) This device must accept any interference received, including interference that may cause undesired operation.

## **NOTE:**

- This equipment has been tested and found to comply with the limits for a Class B digital device, pursuant to part 15 of the FCC Rules. These limits are designed to provide reasonable protection against harmful interference in a residential installation. This equipment generates uses and can radiate radio frequency energy and, if not installed and used in accordance with the instructions, may cause harmful interference to radio communications. However, there is no guarantee that interference will not occur in a particular installation. If this equipment does cause harmful interference to radio or television reception, which can be determined by turning the equipment off and on, the user is encouraged to try to correct the interference by one or more of the following measures:
  - Reorient or relocate the receiving antenna.
  - Increase the separation between the equipment and receiver.
  - Connect the equipment into an outlet on a circuit different from that to which the receiver is connected.
  - Consult the dealer or an experienced radio/TV technician for help.

- Any changes or modifications to this unit not expressly approved by the party responsible for compliance could void the user's authority to operate the equipment.

**Warning: please tear off this isolative film before using.**