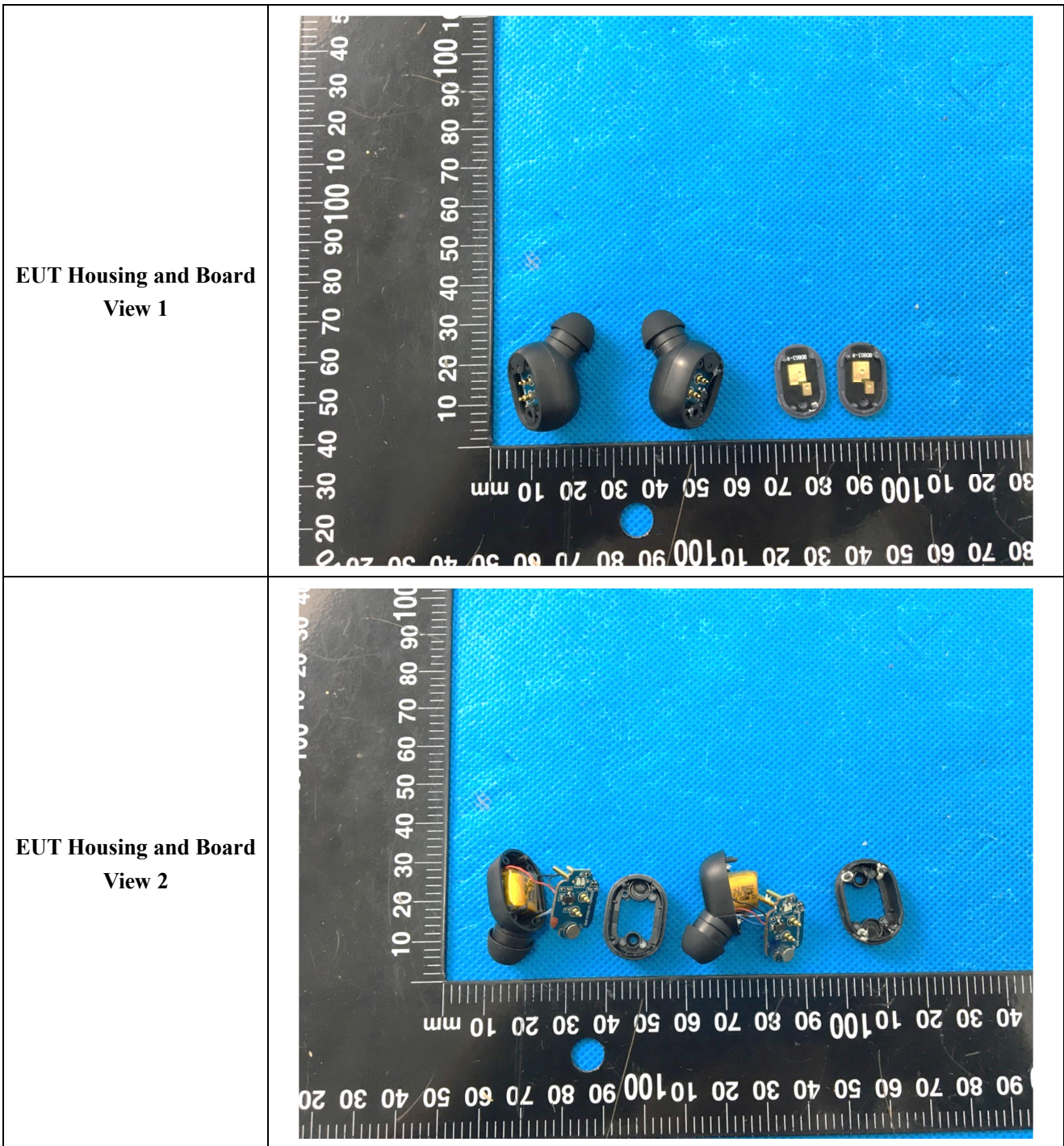
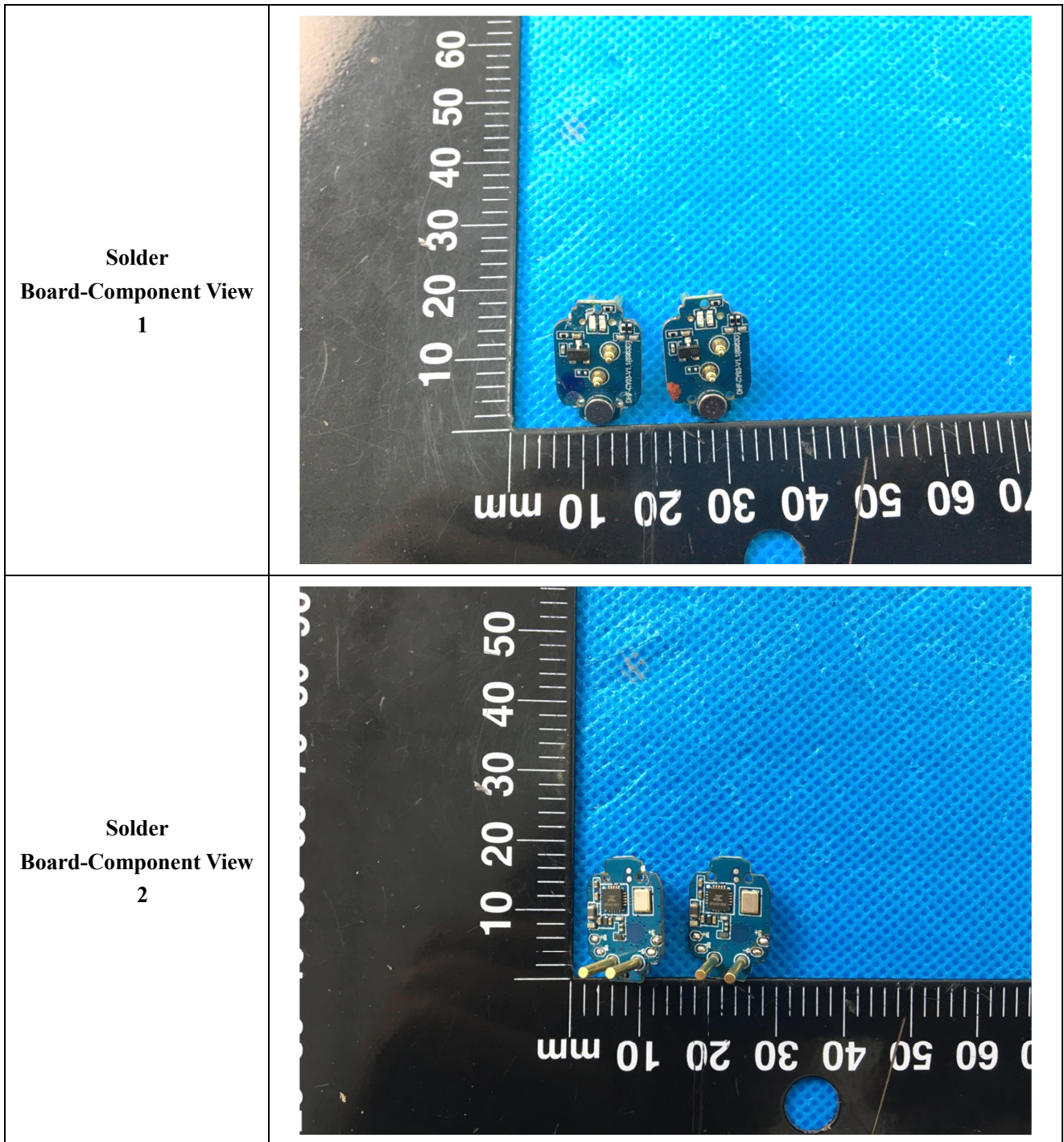
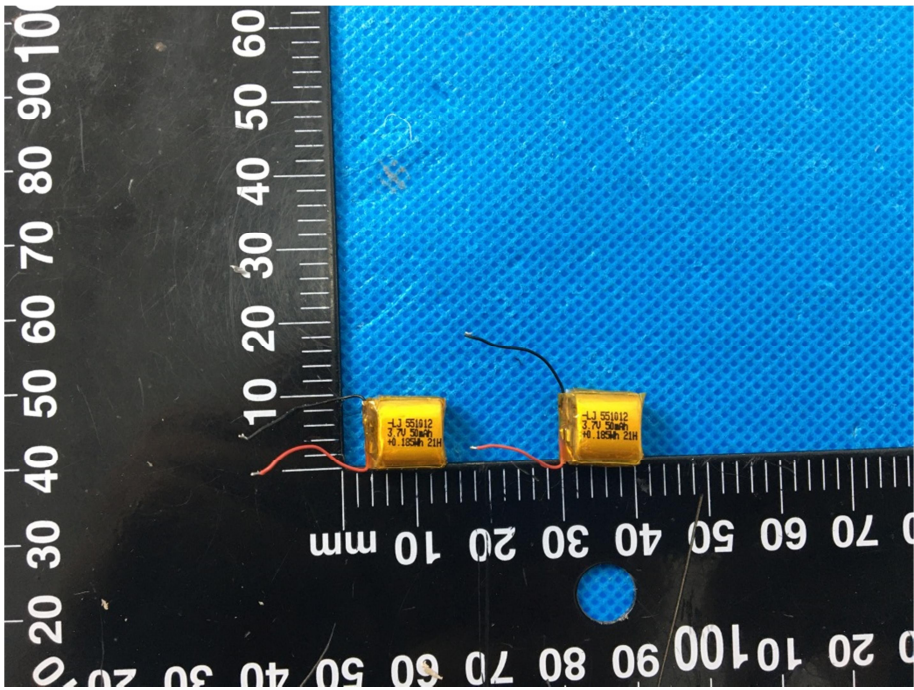
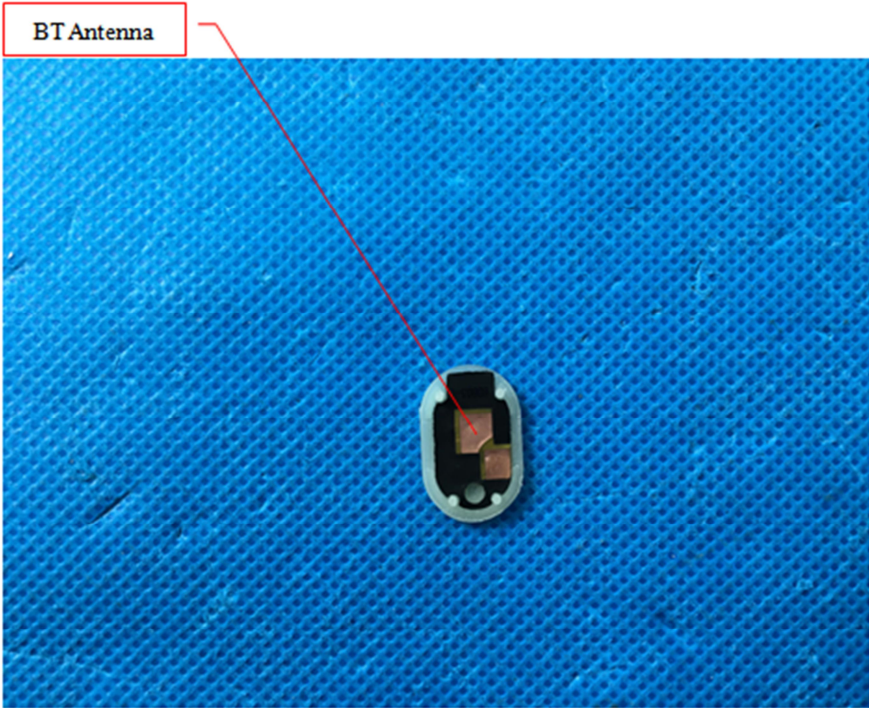


### EXHIBIT 3 - EUT INTERNAL PHOTOGRAPHS





<p style="text-align: center;"><b>Solder Board-Component View 3</b></p>	 <p>A photograph showing two yellow rectangular components mounted on a printed circuit board (PCB). The components are positioned horizontally. A black ruler with white markings is placed below the components for scale. The ruler shows millimeter markings from 0 to 100. The components are labeled with '4-J 551012' and other markings. The PCB is blue with a fine grid pattern.</p>
<p style="text-align: center;"><b>Antenna View</b></p>	 <p>A close-up photograph of a BT antenna component. The component is oval-shaped with a black top and a silver bottom. A red line points from a red-bordered box labeled 'BT Antenna' to the component. The component is mounted on a blue PCB with a fine grid pattern.</p>