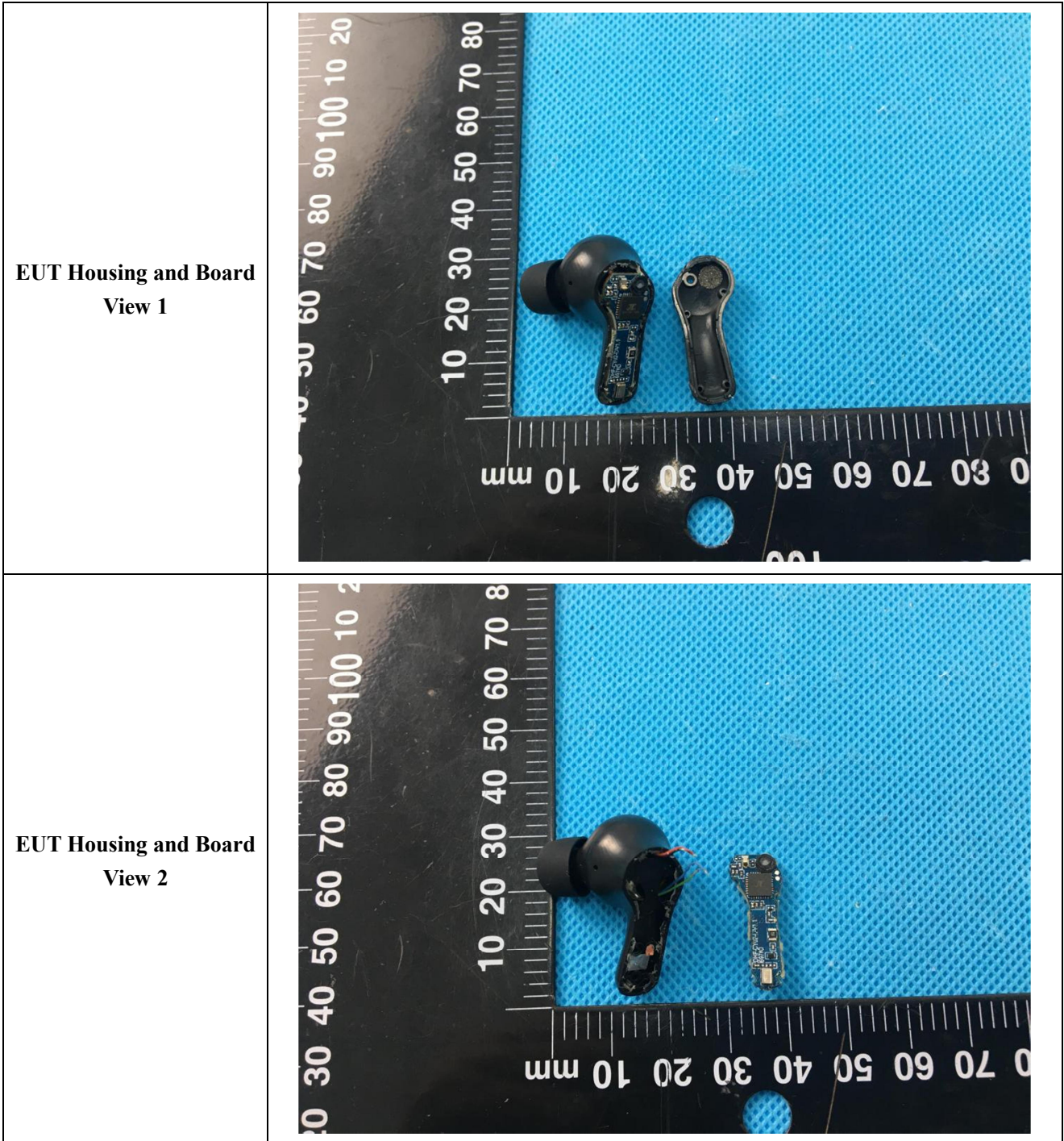
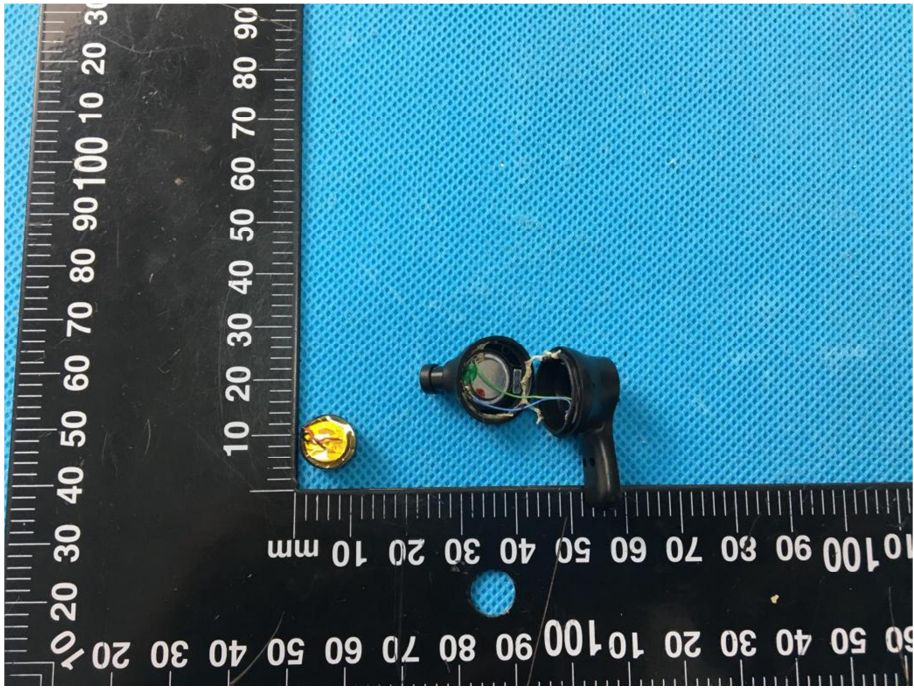
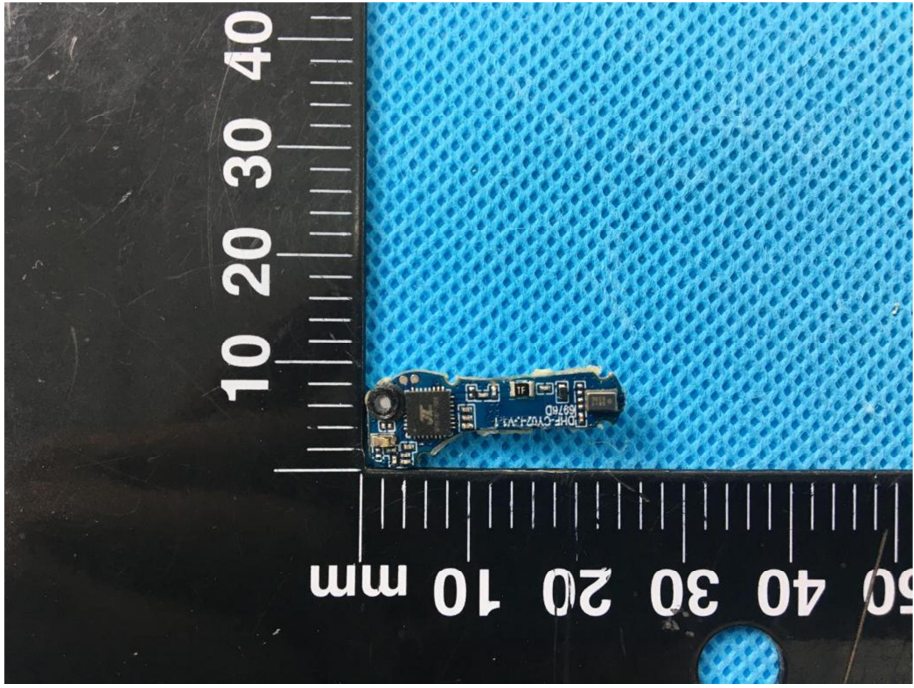
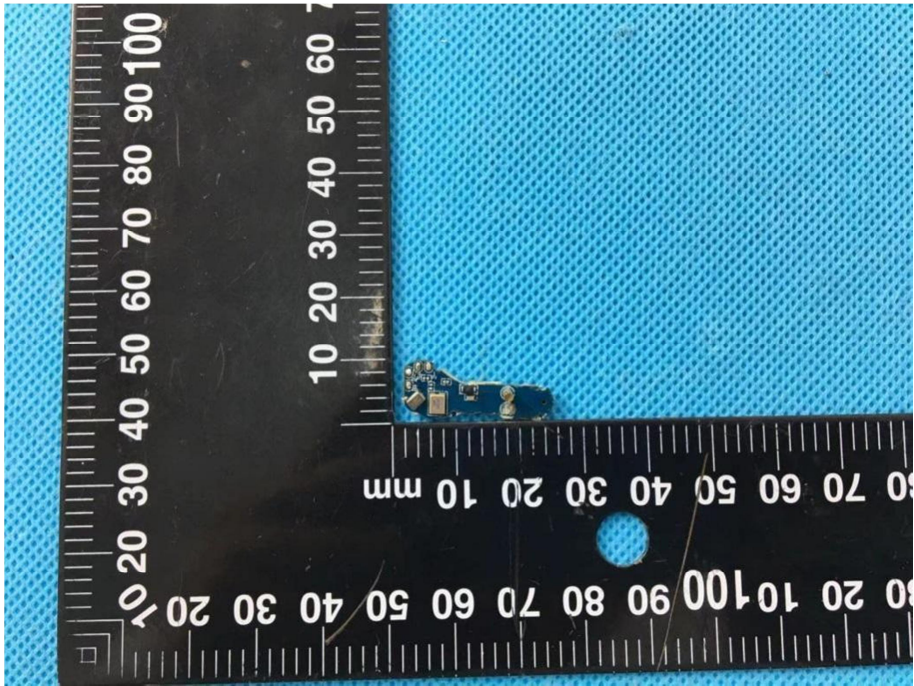
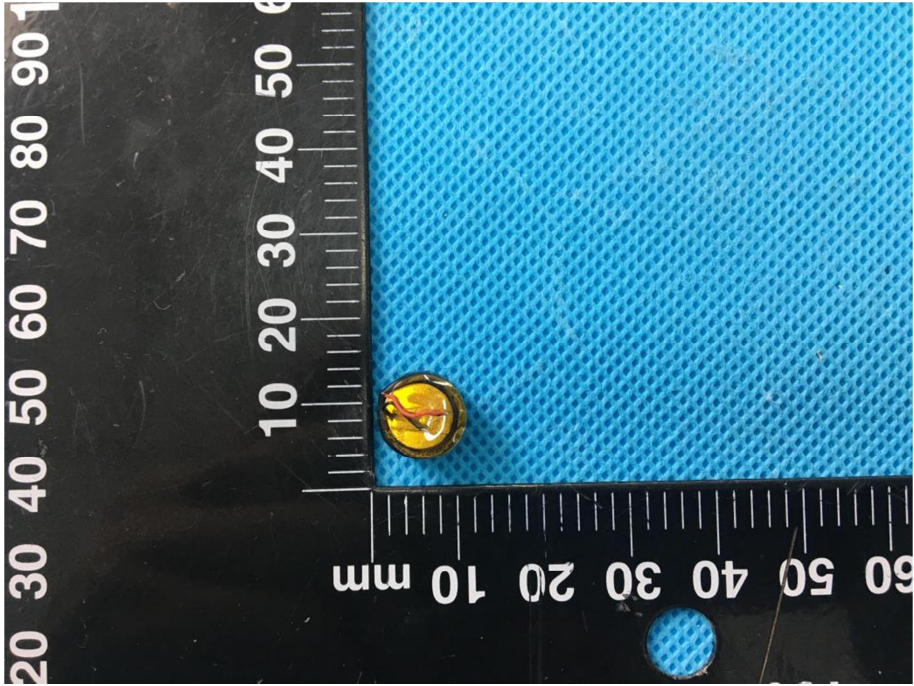


### EXHIBIT 3 - EUT INTERNAL PHOTOGRAPHS



<p><b>EUT Housing and Board View 3</b></p>	 A photograph showing a disassembled electronic unit. A black plastic housing is partially open, revealing internal green and white components. A small gold-colored component is visible on the left. A black ruler with white markings is placed horizontally below the unit, showing measurements in millimeters. The background is a blue textured surface.
<p><b>Solder Board-Component View 1</b></p>	 A photograph showing a small blue printed circuit board (PCB) component. The board has several surface-mounted components, including a large black chip and smaller components. A black ruler with white markings is placed horizontally below the board, showing measurements in millimeters. The background is a blue textured surface.



<p style="text-align: center;"><b>Solder Board-Component View 2</b></p>	 <p>A microscopic view of a solder joint on a blue PCB. The joint is a small, dark, irregular shape. A black ruler with white markings is visible in the background, showing measurements in millimeters. The ruler is oriented vertically and horizontally, with the vertical scale on the left and the horizontal scale at the bottom. The blue PCB has a fine, grid-like pattern.</p>
<p style="text-align: center;"><b>Solder Board-Component View 3</b></p>	 <p>A microscopic view of a solder joint on a blue PCB. The joint is a larger, more circular, yellowish-gold shape. A black ruler with white markings is visible in the background, showing measurements in millimeters. The ruler is oriented vertically and horizontally, with the vertical scale on the left and the horizontal scale at the bottom. The blue PCB has a fine, grid-like pattern.</p>

