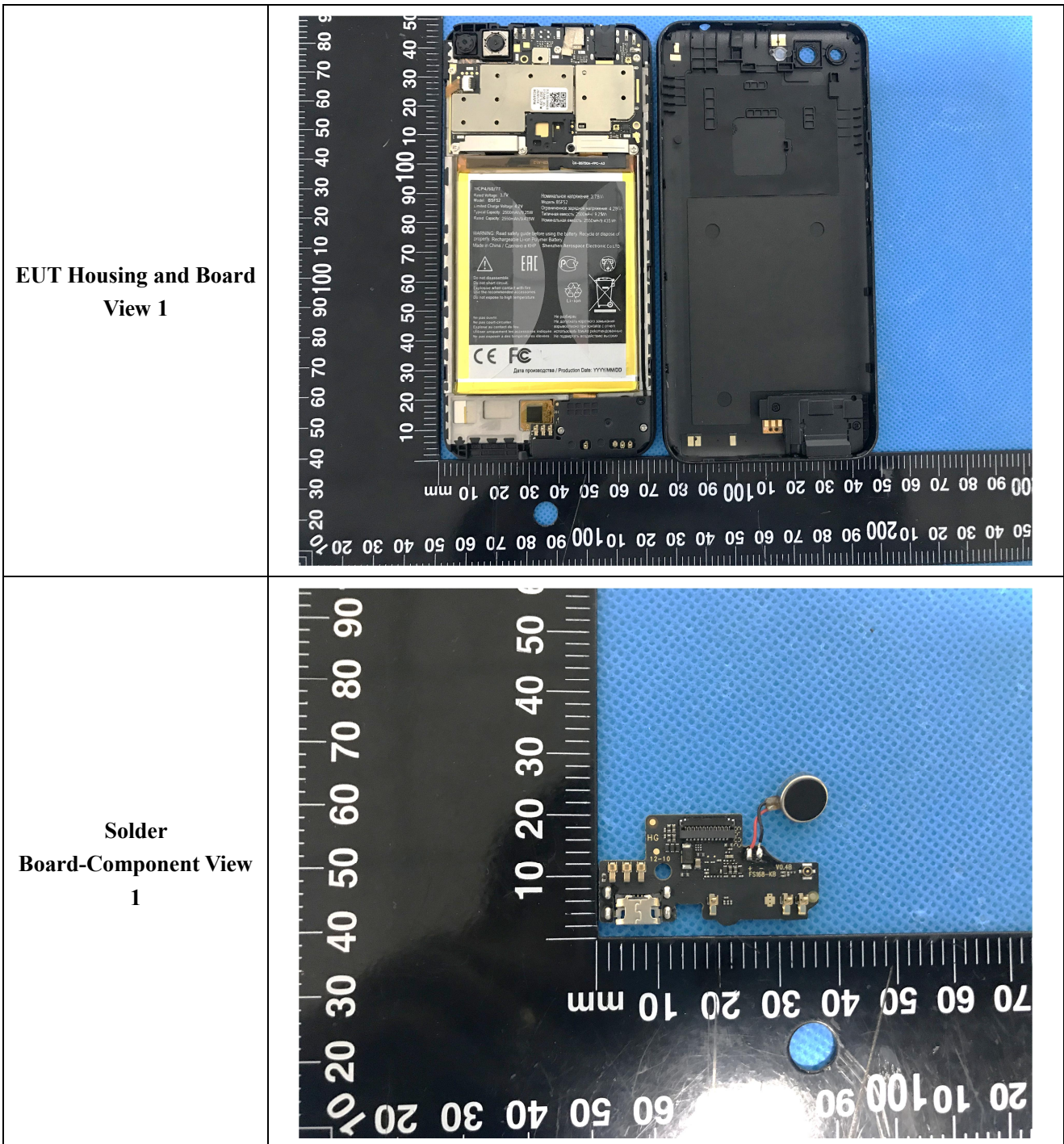
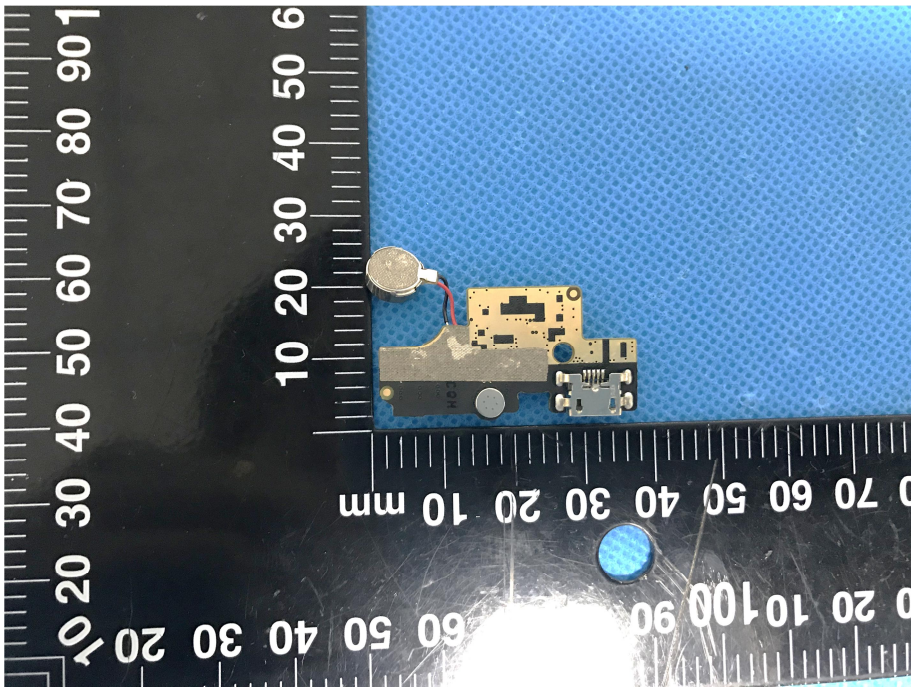
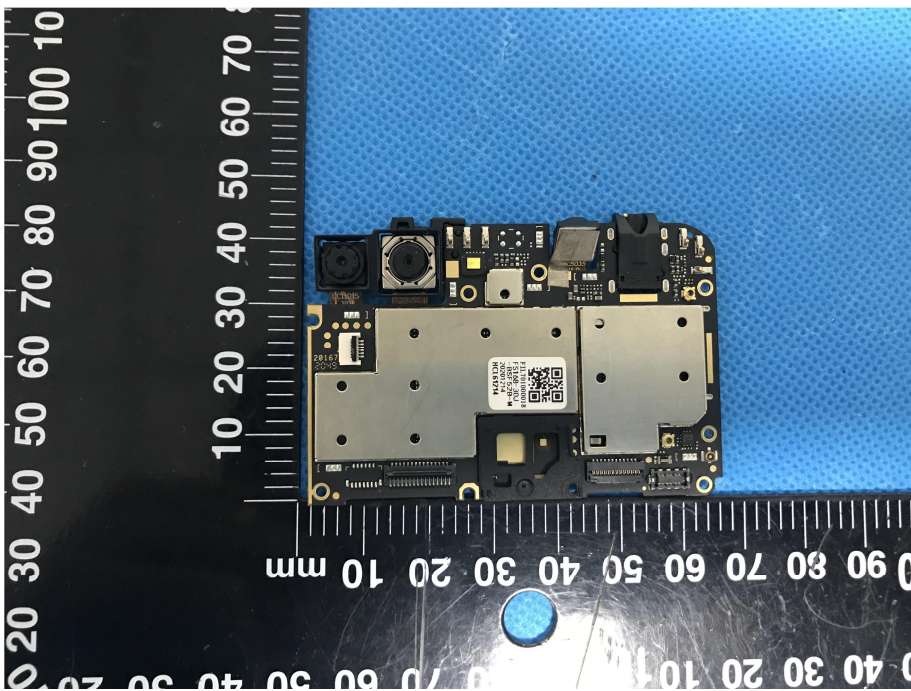
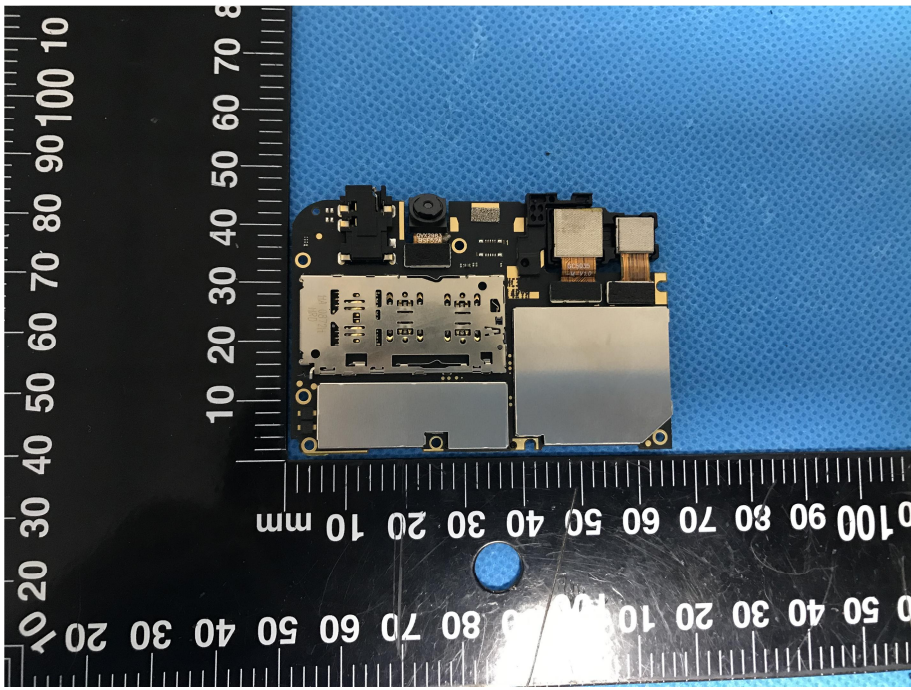
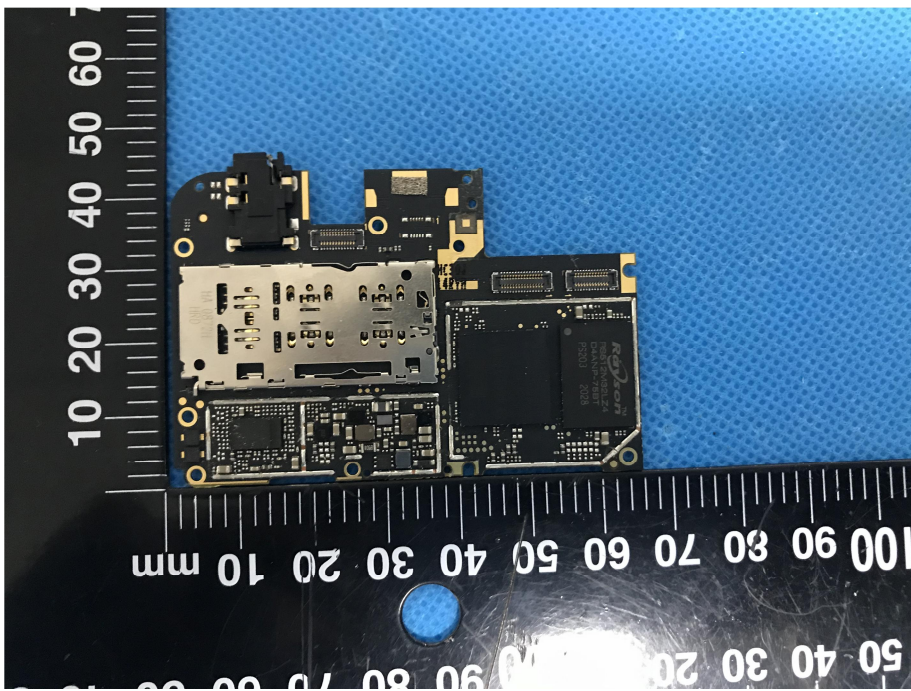
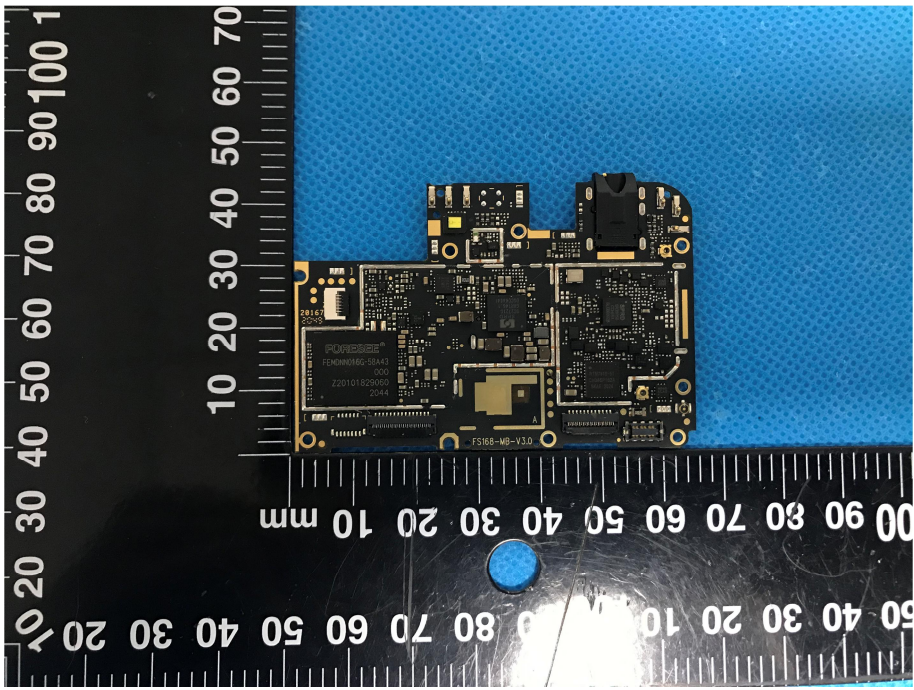



EXHIBIT 3 - EUT INTERNAL PHOTOGRAPHS



<p>Solder Board-Component View 2</p>	 <p>A photograph showing a small, rectangular printed circuit board (PCB) component. The board is populated with various electronic components, including a circular component on the left side and several smaller components on the right. The board is placed on a black surface with a white ruler for scale. The ruler shows measurements in millimeters, with the component positioned between the 10 mm and 60 mm marks. A blue circular object is visible on the ruler below the component.</p>
<p>Solder Board-Component View 3</p>	 <p>A photograph showing a larger, more complex printed circuit board (PCB) component. The board is populated with various electronic components, including a camera lens, a microphone, and several integrated circuits. The board is placed on a black surface with a white ruler for scale. The ruler shows measurements in millimeters, with the component positioned between the 10 mm and 100 mm marks. A blue circular object is visible on the ruler below the component.</p>

<p>Solder Board-Component View 4</p>	 A photograph of a soldered board component, labeled as View 4. The component is a small, rectangular printed circuit board (PCB) with various electronic components, including a large silver component, a camera lens, and several smaller components. It is placed on a blue textured surface next to a black ruler with white markings. The ruler shows measurements in millimeters, with the component's length being approximately 100 mm and its width around 40 mm.
<p>Solder Board-Component View 5</p>	 A photograph of a soldered board component, labeled as View 5. This view shows a different side or a different section of the component. It features a large black integrated circuit (IC) with 'R571001' printed on it, along with other components and connectors. The component is placed on a blue textured surface next to a black ruler with white markings. The ruler shows measurements in millimeters, with the component's length being approximately 100 mm and its width around 40 mm.

<p style="text-align: center;">Solder Board-Component View 6</p>	 <p>A photograph of a mobile phone's internal solder board component. The board is black with various electronic components, including a large integrated circuit (IC) labeled 'PDK9555' and 'FS168-WB-V3.0'. The board is placed on a blue textured surface. A black ruler with white markings is visible on the left and bottom, showing measurements in millimeters.</p>
<p style="text-align: center;">Antenna View</p>	 <p>A photograph showing the antenna components of a mobile phone. The phone is disassembled, with the back cover removed, revealing the internal antenna components. A black ruler with white markings is visible on the left and bottom, showing measurements in millimeters. Three red boxes with labels point to specific antenna components:</p> <ul style="list-style-type: none">Top left: GSM1900; WCDMA B2/4; LTE B2/4 AntTop right: WIFI/BT/GPS AntennaBottom: GSM850; WCDMA B5; LTE B5/7/17 Ant.