



2022

深圳祥博一科技有限公司

Shenzhen Xiangboyi Technology Co. Ltd

天线测试报告

Antenna report



TEST REPORT

01 客户名称/Customer：和天创

02 项目名称/Project：L005

03 立项编号/Project NO：XBY220391

04 工程师/Engineer：魏道发
电话/Phone：18123850014

PART 1

测试报告版本/Report version

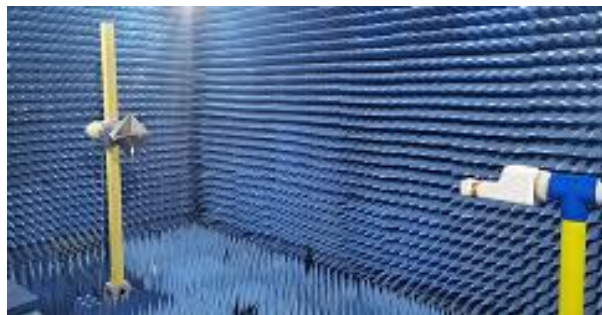
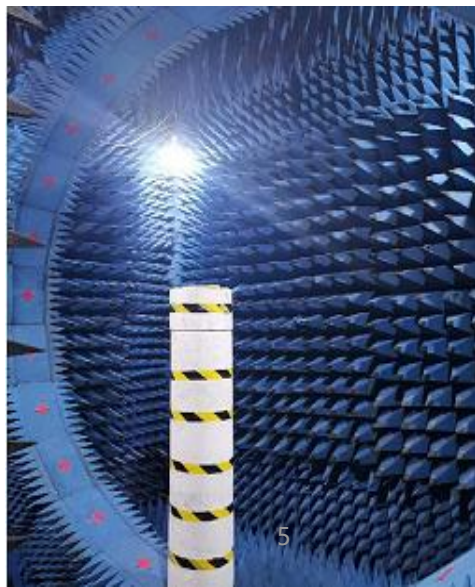
日期 Date	天线版本 Antenna version	主板版本 PCB version	变更描述 Description of Change
2022-08-16			样品天线测试数据

NO	ITEMS	DETAILS
1	工作频段 Operating band	WIFI:2.4G; 5.8G
2	频率范围 Frequency band	WIFI: 2400-2500Mhz; 5180-5850Mhz
3	天线类型 Antenna type	MAIN:
4	天线材质及实现形状 Material and implementation shape	FPC+焊线

PART 3

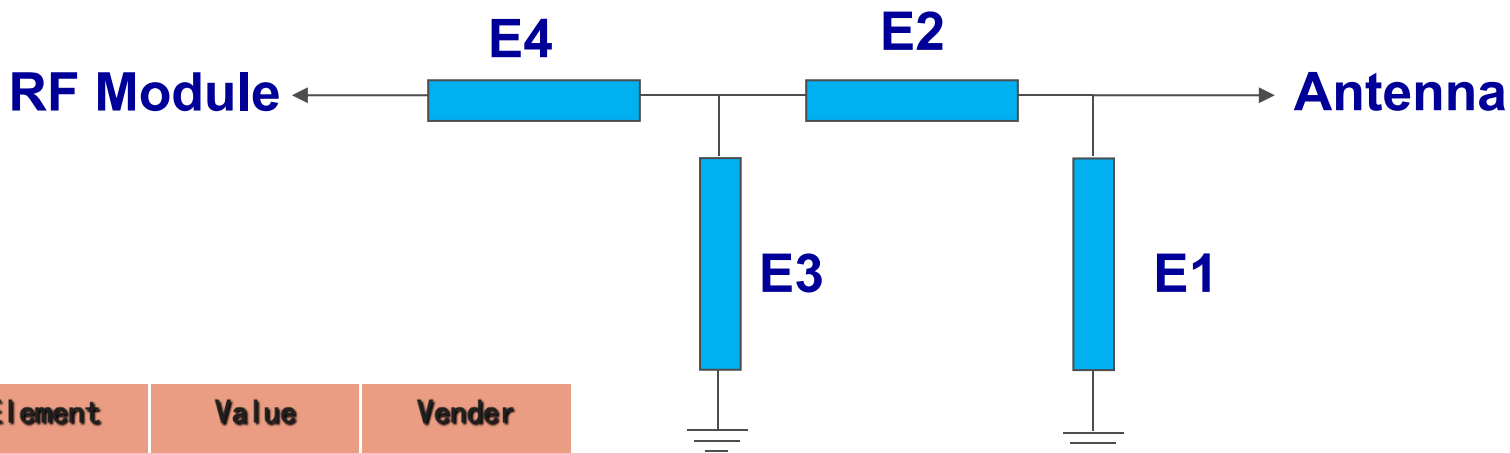
Test system and equipment

	测试项目/Test items	设备/equipment
1: S参数 S parameter	1. 回波损耗 Return loss 2. 驻波比 VSWR	网络分析仪/Network analyzer: A338/A333
2: 耦合功率测试 Active test	1. 发射功率 Transmitting power 2. 接收灵敏度 Receiving sensitivity	综合测试仪/Comprehensive test instrument: Agilent 8960/ CMW500
3: 辐射模式与增益 Radiation mode and gain	1. 辐射模式 Radiation mode 2. 天线增益 Gain	1. 暗室/Shielding room: 7x4x3 m (ETS-3D) 2. 网络分析仪/Network analyzer: HP 8753D



PART 4

匹配电路/Matching Circuits



Element	Value	Vender
E1 (0402)	NA	
E2 (0402)	0 Ohm	
E3 (0402)	NA	
E4 (0402)	0 Ohm	

Original match unchanged.

PART 5

测试数据/RF Report

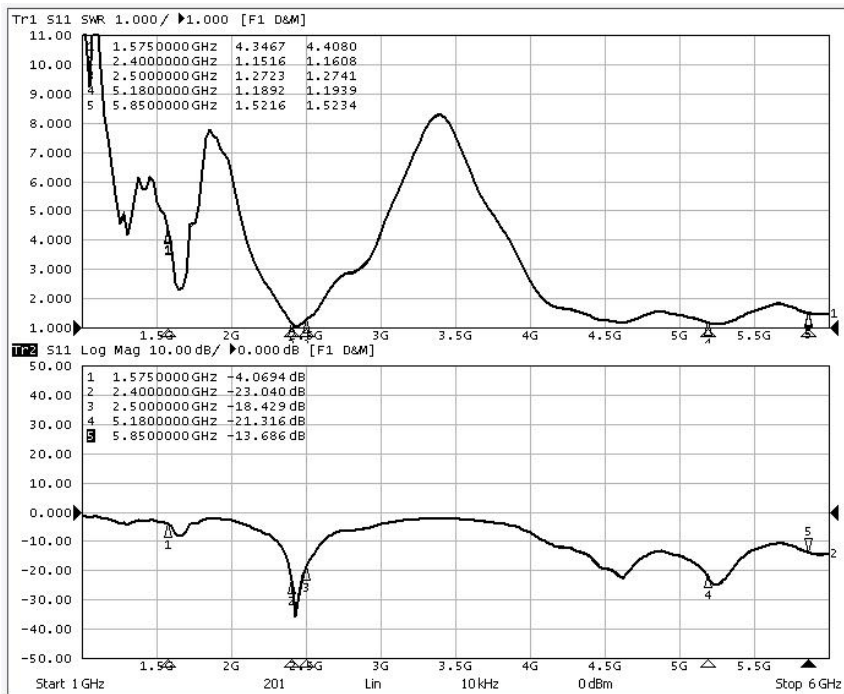
WIFI BAND	802.11a : 54Mbps (5G)					
Channel	CH36	CH149	CH161			
TRP	12.33	12.35	13.01			
TIS			-70.08			

WIFI BAND	802.11b : 11Mbps (2.4G)			802.11g : 54Mbps (2.4G)		
Channel	CH1	CH6	CH11	CH1	CH6	CH11
TRP	14.27	14.41	14.23	14.64	14.77	15
TIS			-77.74			-67.84

WIFI BAND	802.11n : MCS7 (2.4G)					
Channel	CH1	CH6	CH11			
TRP	14.71	14.13	14.18			
TIS			-68.1			

PART 6

测试数据/RF Report



PART 6

测试数据/RF Report

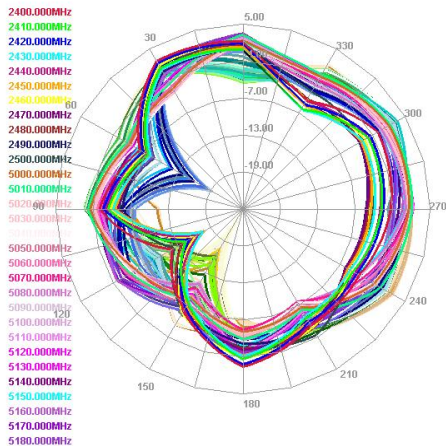
Passive Test For 2.4G		
Freq (MHz)	Effi (%)	Gain (dBi)
2400	54.33	3.53
2410	43.27	2.77
2420	43.2	2.53
2430	47.53	2.29
2440	43.55	2.59
2450	49.39	2.31
2460	49.69	2.06
2470	48.56	2.07
2480	43.71	2.41
2490	48.15	1.93
2500	58.71	2.64

Passive Test For D5		
Freq (MHz)	Effi (%)	Gain (dBi)
5000	49.78	2.81
5050	46.19	2.49
5100	47.97	2.62
5150	43.39	2.17
5200	46.09	2.08
5250	47.7	1.76
5300	43.44	1.93
5350	44.5	1.96
5400	48.47	2.04
5450	49.27	2.48
5500	43.18	2.08
5550	46.6	2.09
5600	51.67	2.06
5650	47.03	2.66
5700	47.67	3.19
5750	49.35	2.03
5800	45.38	1.97
5850	47.13	2.43
5900	42.41	2.6
5950	51.91	2.58
6000	49.08	1.99

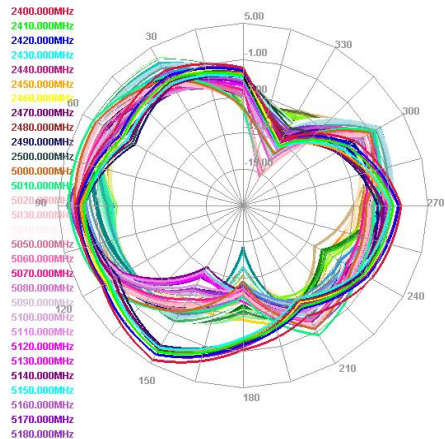
PART 6

测试数据/RF Report

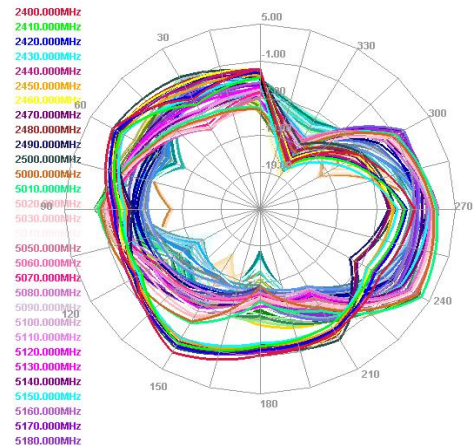
Horizontal



E1 Face

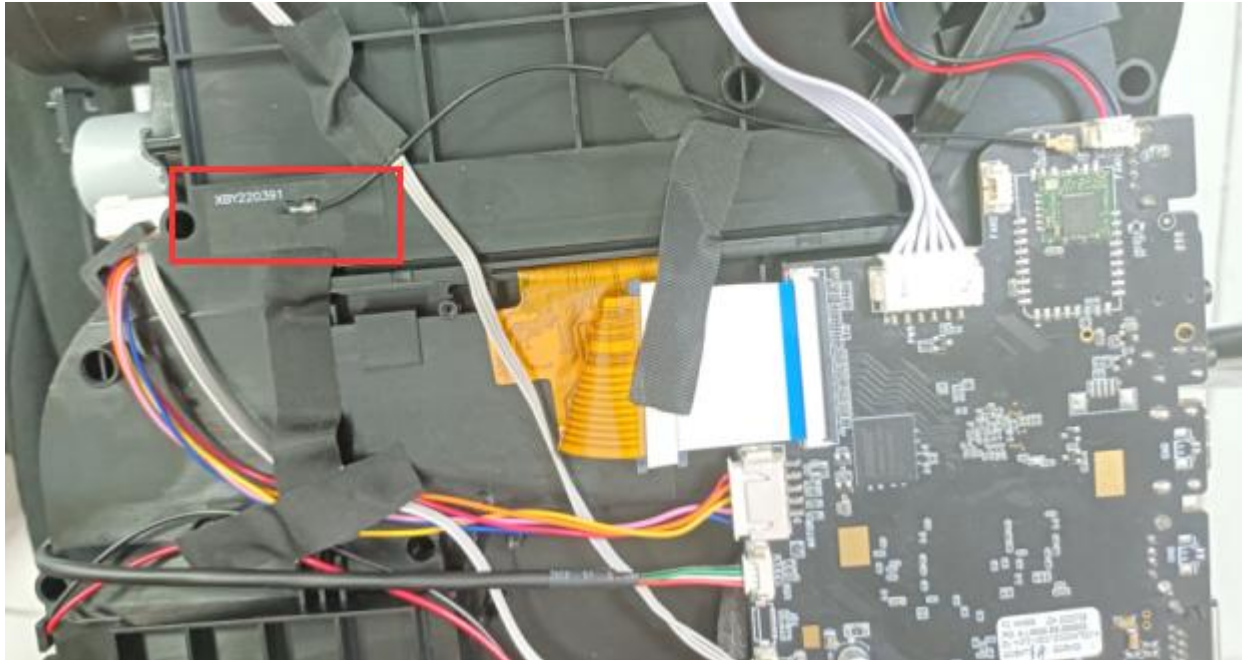


E2 Face



PART 7

组装方式/Assembly method



PART 8

整机图片

Picture of complete machine





2022 Thanks!

Your content to play here, or through your copy, paste in this box, and select only the text. Your content to play here, or through your copy, paste in this box, and select only the text.