



# Specification

## 2.4G WIFI ANTENNA

<b>PART NAME</b>	2.4G WIFI glue stick antenna
<b>ECT P/N</b>	DBT-KZKJ-WIFI-001
<b>APPROVAL REV.</b>	V1.1
<b>DELIVERY DATE</b>	2023. 06. 15
<b>PREPARED BY</b>	Yao Changqing
<b>APPROVED BY</b>	

Add:

Rm505,8th building,Yungu 2nd period,pingshan No.1Road,XiliTown,NanshanDistrict,ShenZhen,China

Tel:86-755-83763273/13927478525

Fax:86-755-83763348

Email:dbt\_yang@163.com

## Product photos

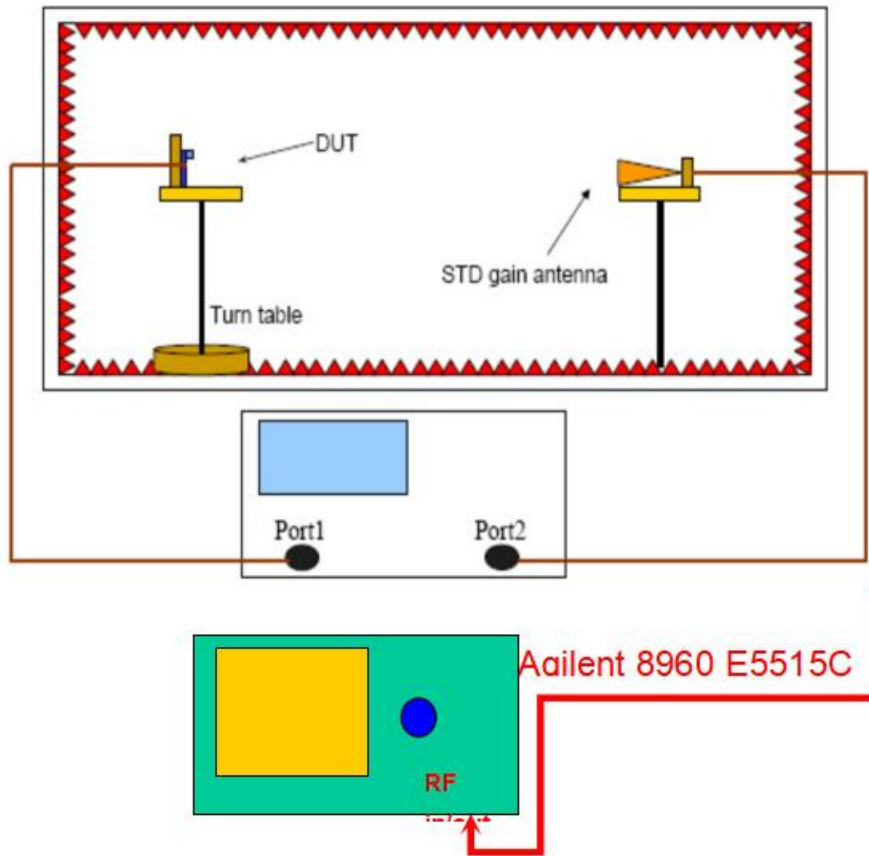


## Electrical specifications

DESCRIPTION	VALUE
Frequency range	2400-2500MHz
Impedance	50 $\Omega$
V.S.W.R	$\leq 2.0$
Gain	1.15dBi
Radiating element	1/4 Wave Helical
Polarization	linear Vertical
Admitted power	1W
Connector	SMA
Operating temp	-40°C~+85°C
Storage temp	-40°C~+85°C

## Dynamic test environment

Test instrument: Agilent8960E5515B+ShieldBox

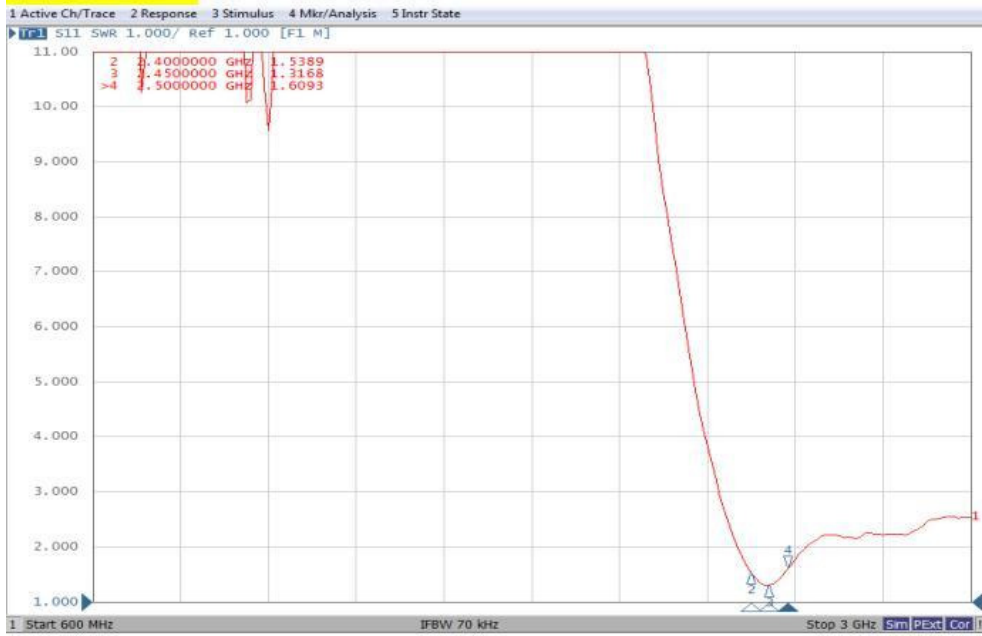


## Antenna test data

Active test data			
802.11b : 11Mbps			
Test	Wifi 2G TRP		
Result	1	6	11
Frequency (MHz)	2412	2437	2462
Txp Ave(dBm)	17.96	17.27	17.1
Test	Wifi 2G TIS		
Result	1	6	11
Frequency (MHz)	2412	2437	2462
Sens Ave(dBm)	-86.34	-86.9	-86.98
802.11g : 54Mbps			
Test	Wifi 2G TRP		
Result	1	6	11
Frequency (MHz)	2412	2437	2462
Txp Ave(dBm)	16.73	16.27	16.08
Test	Wifi 2G TIS		
Result	1	6	11
Frequency (MHz)	2412	2437	2462
Sens Ave(dBm)	-74.62	-73.82	-73.65
802.11n : MCS6			
Test	Wifi 2G TRP		
Result	1	6	11
Frequency (MHz)	2412	2437	2462
Txp Ave(dBm)	16.55	15.74	15.82
Test	Wifi 2G TIS		
Result	1	6	11
Frequency (MHz)	2412	2437	2462
Sens Ave(dBm)	-72.18	-72.83	-72.79

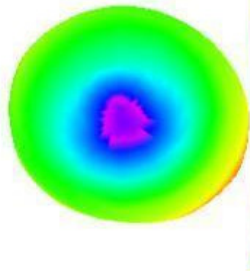
# Passive test data

## S11-SWR



## Directional diagram

2450.000MHz



For the record,

This antenna design, research and development intellectual property rights are owned by our company, once it is found that the same products are supplied to your company without our permission, our company will pursue the corresponding legal responsibility according to law, please respect intellectual property rights and your support is our unlimited power, thank you for cooperation!