

SUPrema

RealPass-N

Multi-functional ID Card & Passport Reader

User Manual

Version 1.0



1. Introduction

1.1 RealPass-N

RealPass-N is a multi-functional ID document and passport reader that can read variety of data such as OCR, photos, characters, barcodes. Capture Surface IP54 rated rugged structure, the device features USB 2.0 power and data transfer interface.



1.2 Application

- Immigration clearance
- Cuss & self check-in kiosk
- Automated immigration clearance system (Autogate)

1.3 Features

- Compact size and ergonomic design
- Powered from USB 2 port or external power supply.
- Flexible OCR to read various documents type
- Reads 1D and 2D barcodes.
- Multi-color LED and beep sound for intuitive user interface
- Provides SDK for easy integration into any systems

1.5 Specifications

Dimension (W x D x H, mm)	With Cover: 155 x 190 x 103.8 Without cover: 155 x 190 x 98.8
Window Size (W x L, mm)	130 x 90mm
Weight	1.01kg
Image Resolution	500dpi
Image Color Depth	24 bits / pixels
Light Sources	Visible, IR, UV
Processing Time	Image Capture (WH, IR, UV) and MRZ Reading < 2 sec
Ingress Protection	Surface IP54
Operating Temperature	0°C ~ 40°C
Power Supply	USB Power (5V 700mA) or External Power (12V 300mA)
Data Interface	USB 2.0
Operating Systems	Windows XP(32bit), Vista(32/64bit), 7(32/64bit)
SDK	Full SDK including DLLs with a demo program
TWAIN Driver	TWAIN 2.1 or higher (for windows)
Support Language	VC++, VB.net, C#, WPF, Builder6.0, Delphi2009

1.6 Device Components



RealPass-N



USB3.0



Adaptor



Cord

2. Exterior

2.1 Top View



2.1.1 Indication LED

(1) OCR

- Green: Lighted when OCR reading is succeeded.
- Red: Lighted when OCR reading failed.
- Blue: Lighted when OCR is operating.

(2) PWR (Power)

- Red: Lighted when the device is supplied with power source.
- Green: Lighted when the device is connected with Realpass application (SDK).

suprema

MODEL : RealPass-N

RPN-F
(V01A)

S/N :

INPUT : 12V  300mA

FCC ID : 2AVDARRealPass-N



R-R-sFD-RealPass-N
MADE IN KOREA

3. Installation

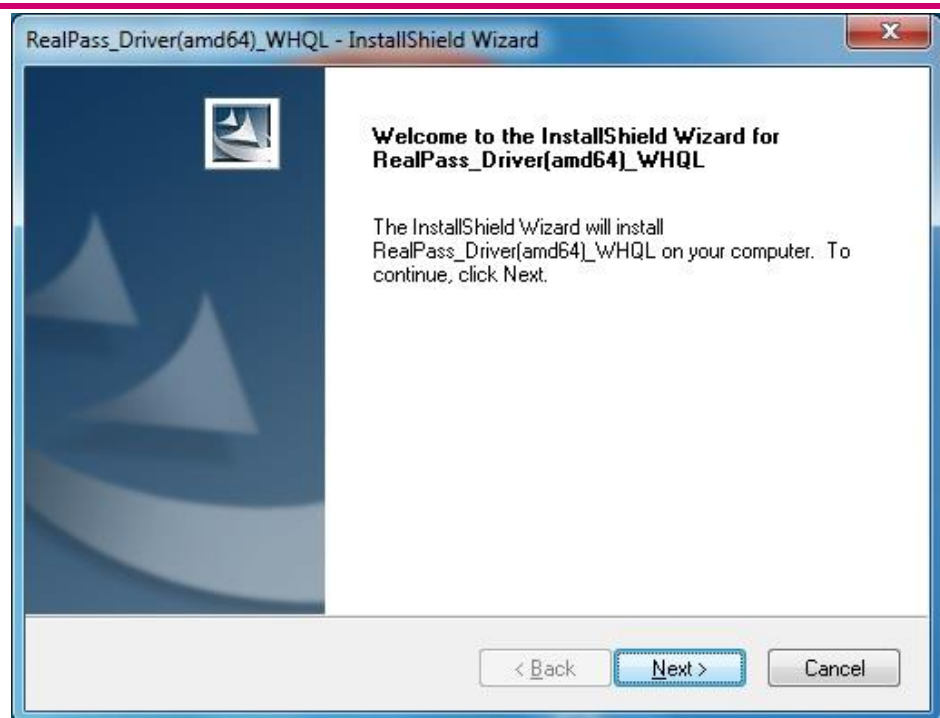
3.1 Device driver Installation

3.1.1 Installation program check and execution (x86 / x64)



Execute “RealPass_Driver(x86).exe” for x86 system or “RealPass_Driver(amd64)_WHQL.exe” for x64 system.

3.1.2 Start InstallShield Wizard



Click “Next”

3.1.3 Customer Information

RealPass_Driver(amd64)_WHQL - InstallShield Wizard

Customer Information
Please enter your information.

Please enter your name and the name of the company for which you work.

User Name:
ICS

Company Name:
Suprema

InstallShield

< Back Next > Cancel

Enter your information and Click "Next"

3.1.4 Select the setup type

RealPass_Driver(amd64)_WHQL - InstallShield Wizard

Setup Type
Select the setup type to install.

Please select a setup type.

Complete
All program features will be installed. (Requires the most disk space.)

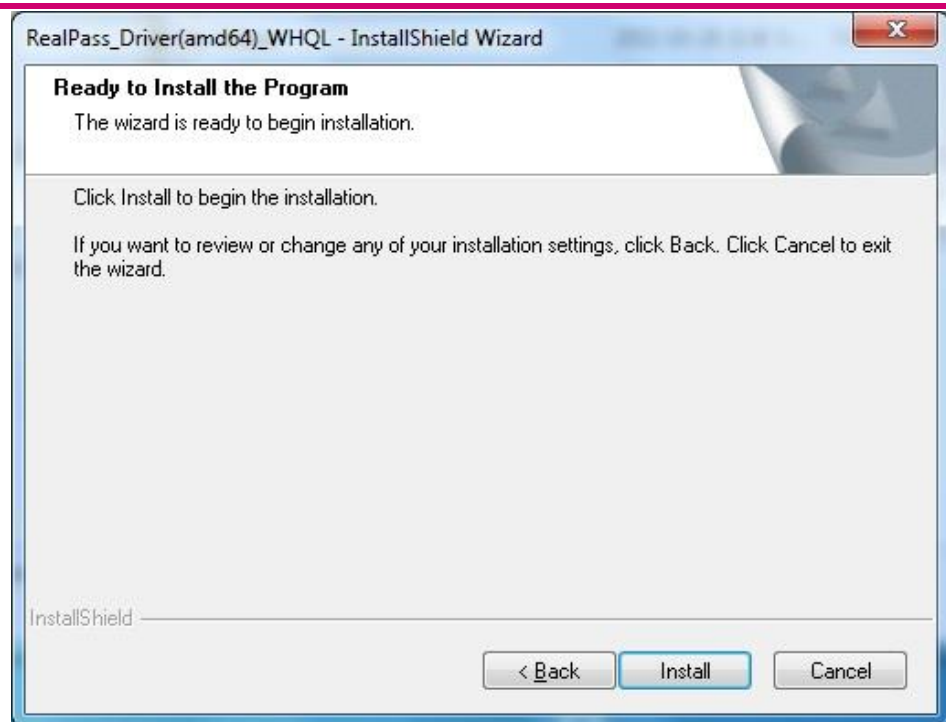
Custom
Select which program features you want installed. Recommended for advanced users.

InstallShield

< Back Next > Cancel

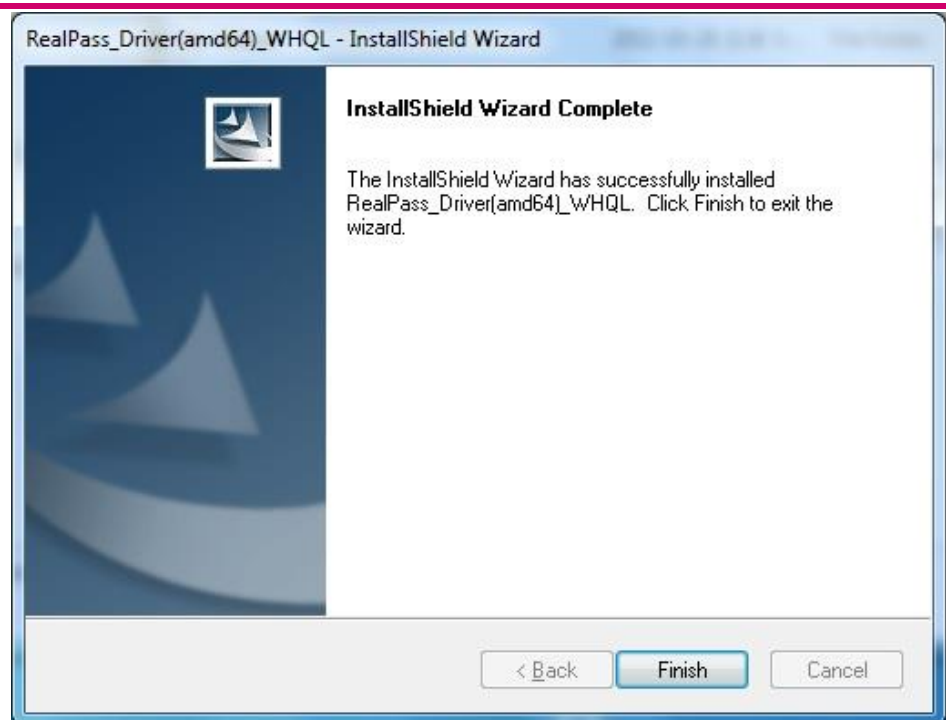
Select "Complete" and Click "Next"

3.1.5 Ready to Install the Program



Click "Install"

3.1.6 Completion of driver installation



Click "Finish"

FCC compliance information

THIS DEVICE COMPLIES WITH PART 15 OF THE FCC RULES.

Operation is subject to the following two conditions:

- (1) This device may not cause harmful interference, and
- (2) This device must accept any interference received, including interference that may cause undesired operation.

Note: This equipment has been tested and found to comply with the limits for a Class B digital device, pursuant to part 15 of the FCC Rules. These limits are designed to provide reasonable protection against harmful interference in a residential installation. This equipment generates, uses, and can radiate radio frequency energy and, if not installed and used in accordance with the instructions, may cause harmful interference to radio communications. However, there is no guarantee that interference will not occur in a particular installation. If this equipment does cause harmful interference to radio or television reception, which can be determined by turning the equipment off and on, the user is encouraged to try to correct the interference by one or more of the following measures:

- Reorient or relocate the receiving antenna.
- Increase the separation between the equipment and receiver.
- Connect the equipment into an outlet on a circuit different from that to which the receiver is connected.
- Consult the dealer or an experienced radio/TV technician for help.

Modifications not expressly approved by the manufacturer could void the user's authority to operate the equipment under FCC rules.

This appliance and its antenna must not be co-located or operation in conjunction with any other antenna or transmitter. A minimum separation distance of 20 cm must be maintained between the antenna and the person for this appliance to satisfy the RF exposure requirements.