



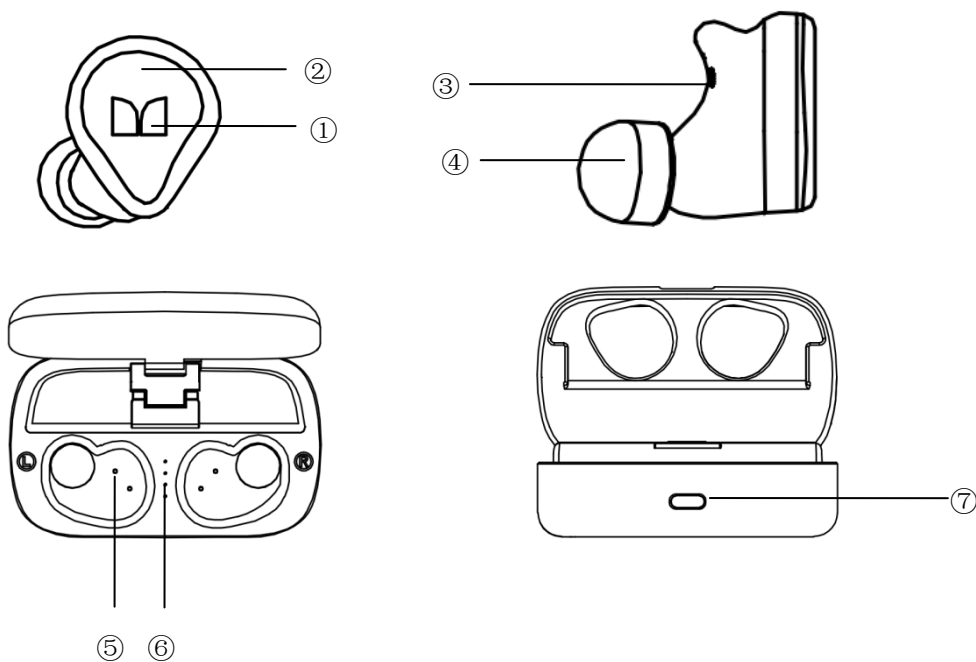
MONSTER CLARITY 700 dB

Model No.: MH41902

FCC ID: 2AVD2-MH41902

Quick Start Guide

Please read this Quick Start Guide carefully and keep it for future use.



Product Overview

- Earphones (Left & Right)
- Charging Case
- Eartips x 3 Pairs (S, M & L, M size installed)
- USB-C Charging Cable
- Quick Start Guide & Warranty letter

Multi Function Button (MFB)

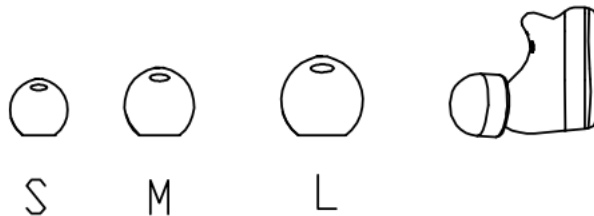
1. LED Indicator
2. Earphone - Charging Contacts
3. Eartip
4. Charging Case - Charging Contacts
5. Charging Case - Battery level LED Indicator
6. USB-C charging port

Power On/Off

The earphones will automatically turn on after removing from the charging case.

To turn off the earphones, put back to the charging case. Earphone's light indicator is on and start charging. When the LED indicator is off, it is fully charged.

Experiment with the different sizes of ear tip to find your perfect fit.



Pairing

Remove earphones from charging case, the earphones will turn on automatically. Left and right earphones will be connected automatically. Wait for a few seconds, "pairing" voice prompt will be heard.

For new device connection, go to the Bluetooth settings on your mobile device and set it to search for new devices (new Monster device). Once the earphone is paired, you will hear "connected".

Volume Control

Volume down: quickly double press the MFB on the left earphone during music streaming

Volume up: quickly double press the MFB on the right earphone during music streaming

Calling

Answer/End Call: short press MFB button to answer/end the phone call

Reject Call: long press MFB button about 2 seconds to reject phone call

Music

Play/Pause: press MFB once to play/pause music

Track forward: press and hold MFB on right earphone for about 2 seconds

Track backward: press and hold MFB on left earphone for about 2 seconds

Voice Control

After connecting to the phone, quickly double press the MFB to activate the voice assistant.

Reset to Factory Settings

When both left and right earphones are in off state, press and hold both MFB for about 5 seconds at the same time. Sound effect will be heard, both left and right earphones are reset successfully. Earphones will power on and connect left and right sides automatically, and “pairing” voice prompt will be heard for device connection.

LED Indicator Guide

Status	Description	Voice Prompt
Power On	LED indicator stays on about 1 second.	“Power On”
Power Off	LED indicator stays on about 1 second.	“Power Off”
Pairing	LED indicator flashes continuously.	“Pairing”
Connected	LED indicator will be turned off.	“Connected”
Charging – Earphones	LED indicator stays On.	-
Charging – Charging Case	Battery level LED Indicator flashes while charging. When battery level LED indicator is off, it is fully charged.	-

Caution

ONLY use computer USB output or standard 5 volt only (500mA minimum) power adapter for charging. Damage may occur if non-standard USB power adapter is used for charging. Do not charge if connector and/or device is wet or damaged.

FCC Statement

Changes or modifications not expressly approved by the party responsible for compliance could void the user's authority to operate the equipment.

This equipment has been tested and found to comply with the limits for a Class B digital device, pursuant to Part 15 of the FCC Rules. These limits are designed to provide reasonable protection against harmful interference in a residential installation. This equipment generates uses and can radiate radio frequency energy and, if not installed and used in accordance with the instructions, may cause harmful interference to radio communications. However, there is no guarantee that interference will not occur in a particular installation. If this equipment does cause harmful interference to radio or television reception, which can be determined by turning the equipment off and on, the user is encouraged to try to correct the interference by one or more of the following measures:

- Reorient or relocate the receiving antenna.
- Increase the separation between the equipment and receiver.
- Connect the equipment into an outlet on a circuit different from that to which the receiver is connected.
- Consult the dealer or an experienced radio/TV technician for help

This device complies with part 15 of the FCC rules. Operation is subject to the following two conditions (1) this device may not cause harmful interference, and (2) this device must accept any interference received, including interference that may cause undesired operation.

RF warning statement:

The device has been evaluated to meet general RF exposure requirement. The device can be used in portable exposure condition without restriction