

Measurement Report for TX, TOP, 60 GHz, UID 0 -, Channel 60480 (60480.0MHz)

Device under Test Properties

Model, Manufacturer	Dimensions [mm]	IMEI	DUT Type
XCOM, TX	46.5 x 55.0 x 29.0		60 GHz device

Exposure Conditions

Phantom Section	Position, Test Distance [mm]	Band	Group, UID	Frequency [MHz], Channel Number	Conversion Factor
5G Air	TOP, 5.00	60 GHz	CW, 0--	60480.0, 60480	1.0

Hardware Setup

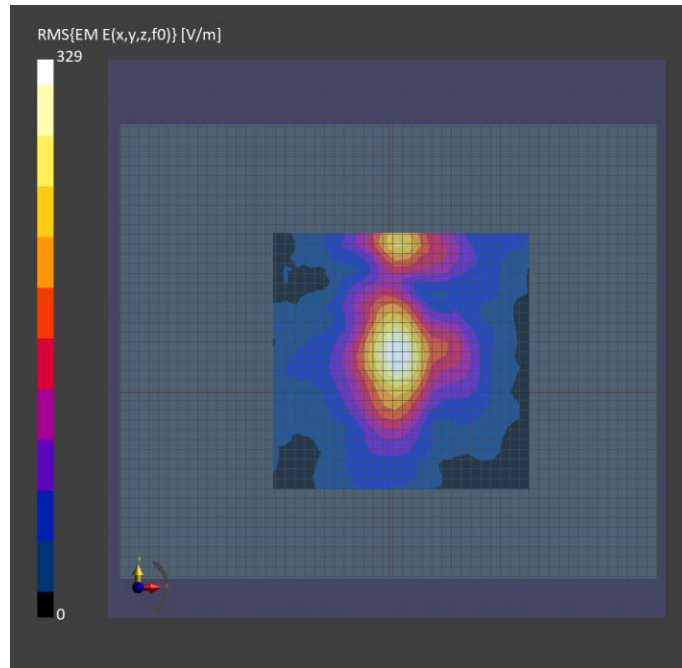
Phantom	Medium	Probe, Calibration Date	DAE, Calibration Date
mmWave- xxxx	---Air	EUmmWV4 - SN9496_F55-110GHz, 2023-02-20	DAE4 Sn1540, 2023-01-23

Scan Setup

	5G Scan
Grid Extents [mm]	25.0 x 25.0
Grid Steps [lambda]	0.25 x 0.25
Sensor Surface [mm]	5.0
MAIA	N/A

Measurement Results

	5G Scan
Date	2023-04-11, 11:47
Avg. Area [cm ²]	4.00
psPDn+ [W/m ²]	35.1
psPDtot+ [W/m ²]	41.3
psPDmod+ [W/m ²]	43.2
E _{max} [V/m]	329
Power Drift [dB]	-0.24



Measurement Report for TX, TOP, 60 GHz, UID 0 -, Channel 60480 (60480.0MHz)

Device under Test Properties

Model, Manufacturer	Dimensions [mm]	IMEI	DUT Type
XCOM, TX	46.5 x 55.0 x 29.0		60 GHz device

Exposure Conditions

Phantom Section	Position, Test Distance [mm]	Band	Group, UID	Frequency [MHz], Channel Number	Conversion Factor
5G Air	TOP, 5.00	60 GHz	CW, 0--	60480.0, 60480	1.0

Hardware Setup

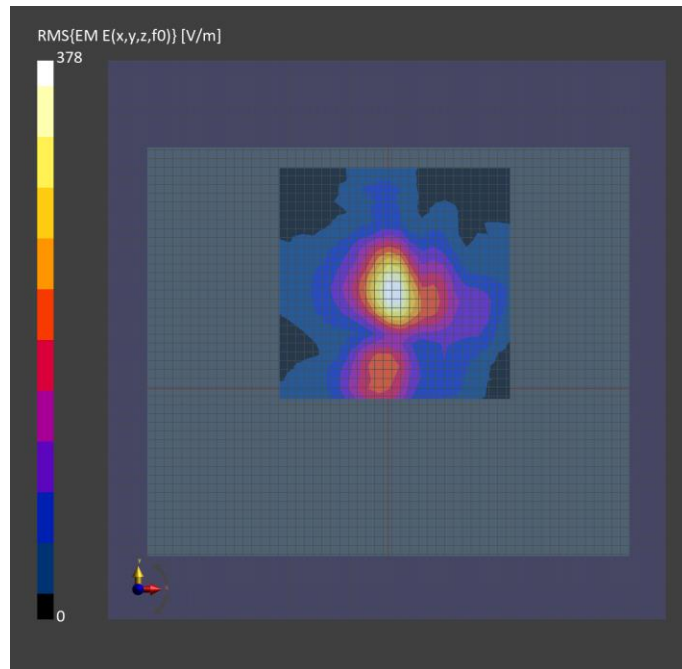
Phantom	Medium	Probe, Calibration Date	DAE, Calibration Date
mmWave- xxxx	---Air	EUmmWV4 - SN9496_F55-110GHz, 2023-02-20	DAE4 Sn1540, 2023-01-23

Scan Setup

	5G Scan
Grid Extents [mm]	25.0 x 25.0
Grid Steps [lambda]	0.25 x 0.25
Sensor Surface [mm]	5.0
MAIA	N/A

Measurement Results

	5G Scan
Date	2023-04-11, 10:54
Avg. Area [cm ²]	4.00
psPDn+ [W/m ²]	43.0
psPDtot+ [W/m ²]	49.5
psPDmod+ [W/m ²]	51.2
E _{max} [V/m]	378
Power Drift [dB]	-0.70



Measurement Report for TX, TOP, 60 GHz, UID 0 -, Channel 60480 (60480.0MHz)

Device under Test Properties

Model, Manufacturer	Dimensions [mm]	IMEI	DUT Type
XCOM, TX	46.5 x 55.0 x 29.0		60 GHz device

Exposure Conditions

Phantom Section	Position, Test Distance [mm]	Band	Group, UID	Frequency [MHz], Channel Number	Conversion Factor
5G Air	TOP, 5.00	60 GHz	CW, 0--	60480.0, 60480	1.0

Hardware Setup

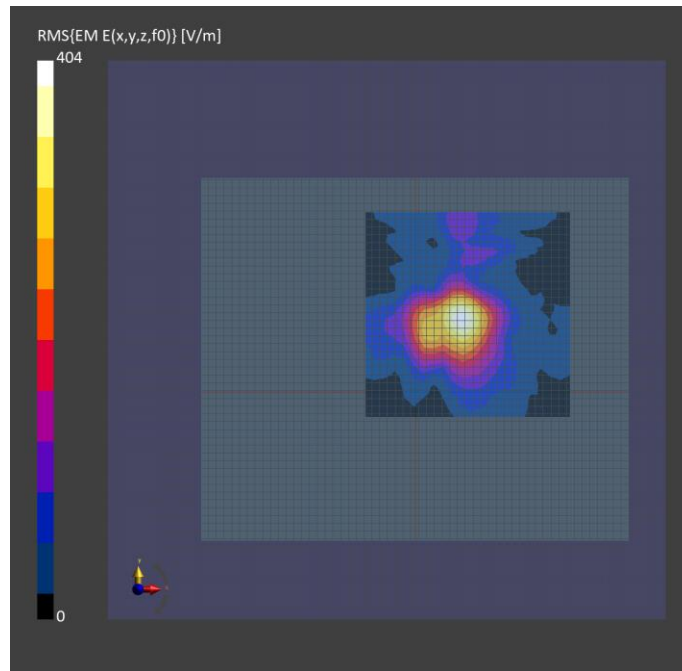
Phantom	Medium	Probe, Calibration Date	DAE, Calibration Date
mmWave- xxxx	---Air	EUmmWV4 - SN9496_F55-110GHz, 2023-02-20	DAE4 Sn1540, 2023-01-23

Scan Setup

	5G Scan
Grid Extents [mm]	25.0 x 25.0
Grid Steps [lambda]	0.25 x 0.25
Sensor Surface [mm]	5.0
MAIA	N/A

Measurement Results

	5G Scan
Date	2023-04-11, 12:39
Avg. Area [cm ²]	4.00
psPDn+ [W/m ²]	46.8
psPDtot+ [W/m ²]	50.0
psPDmod+ [W/m ²]	51.7
E _{max} [V/m]	404
Power Drift [dB]	-0.05



Measurement Report for TX, SIDE, 60 GHz, UID 0 -, Channel 60480 (60480.0MHz)

Device under Test Properties

Model, Manufacturer	Dimensions [mm]	IMEI	DUT Type
XCOM, TX	46.5 x 55.0 x 29.0		60 GHz device

Exposure Conditions

Phantom Section	Position, Test Distance [mm]	Band	Group, UID	Frequency [MHz], Channel Number	Conversion Factor
5G Air	SIDE, 2.00	60 GHz	CW, 0--	60480.0, 60480	1.0

Hardware Setup

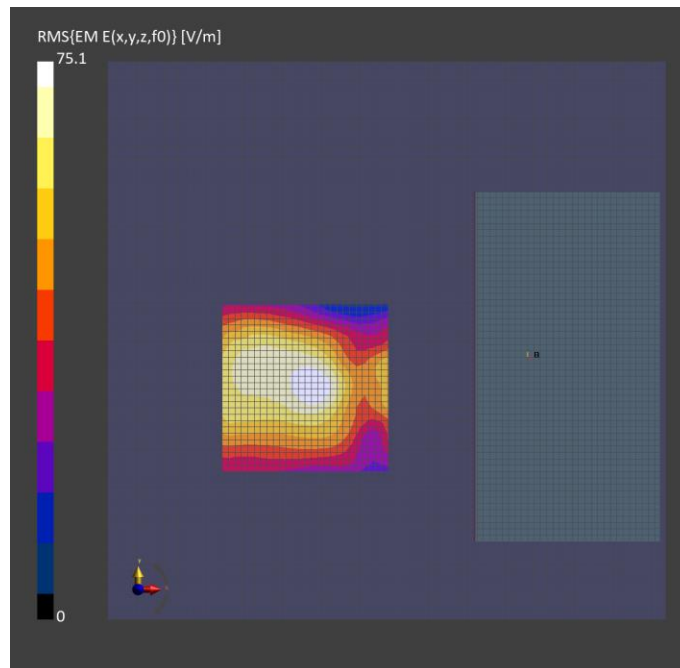
Phantom	Medium	Probe, Calibration Date	DAE, Calibration Date
mmWave- xxxx	---Air	EUmmWV4 - SN9496_F55-110GHz, 2023-02-20	DAE4 Sn1540, 2023-01-23

Scan Setup

	5G Scan
Grid Extents [mm]	25.0 x 25.0
Grid Steps [lambda]	0.25 x 0.25
Sensor Surface [mm]	2.0
MAIA	N/A

Measurement Results

	5G Scan
Date	2023-04-11, 15:57
Avg. Area [cm ²]	4.00
psPDn+ [W/m ²]	6.58
psPDtot+ [W/m ²]	7.58
psPDmod+ [W/m ²]	7.71
E _{max} [V/m]	75.1
Power Drift [dB]	-0.13



Measurement Report for TX, SIDE, 60 GHz, UID 0 -, Channel 60480 (60480.0MHz)

Device under Test Properties

Model, Manufacturer	Dimensions [mm]	IMEI	DUT Type
XCOM, TX	46.5 x 55.0 x 29.0		60 GHz device

Exposure Conditions

Phantom Section	Position, Test Distance [mm]	Band	Group, UID	Frequency [MHz], Channel Number	Conversion Factor
5G Air	SIDE, 2.00	60 GHz	CW, 0--	60480.0, 60480	1.0

Hardware Setup

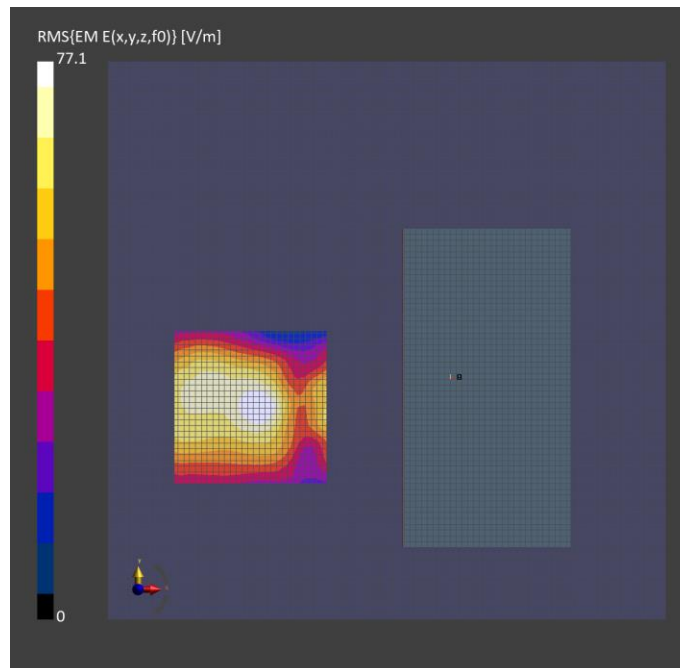
Phantom	Medium	Probe, Calibration Date	DAE, Calibration Date
mmWave- xxxx	---Air	EUmmWV4 - SN9496_F55-110GHz, 2023-02-20	DAE4 Sn1540, 2023-01-23

Scan Setup

	5G Scan
Grid Extents [mm]	25.0 x 25.0
Grid Steps [lambda]	0.25 x 0.25
Sensor Surface [mm]	2.0
MAIA	N/A

Measurement Results

	5G Scan
Date	2023-04-11, 15:10
Avg. Area [cm ²]	4.00
psPDn+ [W/m ²]	6.90
psPDtot+ [W/m ²]	7.94
psPDmod+ [W/m ²]	8.07
E _{max} [V/m]	77.1
Power Drift [dB]	-0.26



Measurement Report for TX, SIDE, 60 GHz, UID 0 -, Channel 60480 (60480.0MHz)

Device under Test Properties

Model, Manufacturer	Dimensions [mm]	IMEI	DUT Type
XCOM, TX	46.5 x 55.0 x 29.0		60 GHz device

Exposure Conditions

Phantom Section	Position, Test Distance [mm]	Band	Group, UID	Frequency [MHz], Channel Number	Conversion Factor
5G Air	SIDE, 2.00	60 GHz	CW, 0--	60480.0, 60480	1.0

Hardware Setup

Phantom	Medium	Probe, Calibration Date	DAE, Calibration Date
mmWave- xxxx	---Air	EUmmWV4 - SN9496_F55-110GHz, 2023-02-20	DAE4 Sn1540, 2023-01-23

Scan Setup

	5G Scan
Grid Extents [mm]	25.0 x 25.0
Grid Steps [lambda]	0.25 x 0.25
Sensor Surface [mm]	2.0
MAIA	Y

Measurement Results

	5G Scan
Date	2023-04-11, 16:49
Avg. Area [cm ²]	4.00
psPDn+ [W/m ²]	1.64
psPDtot+ [W/m ²]	1.77
psPDmod+ [W/m ²]	1.79
E _{max} [V/m]	37.5
Power Drift [dB]	0.29

