

Beam 0 – Top – 5mm

Device under Test Properties

Model, Manufacturer	Dimensions [mm]	IMEI	DUT Type
,	x x		60 GHz device

Exposure Conditions

Phantom Section	Position, Test Distance [mm]	Band	Group, UID	Frequency [MHz], Channel Number	Conversion Factor
,	,		-	60480	

Hardware Setup

Phantom	Medium	Probe, Calibration Date	DAE, Calibration Date
-		,	,

Scan Setup

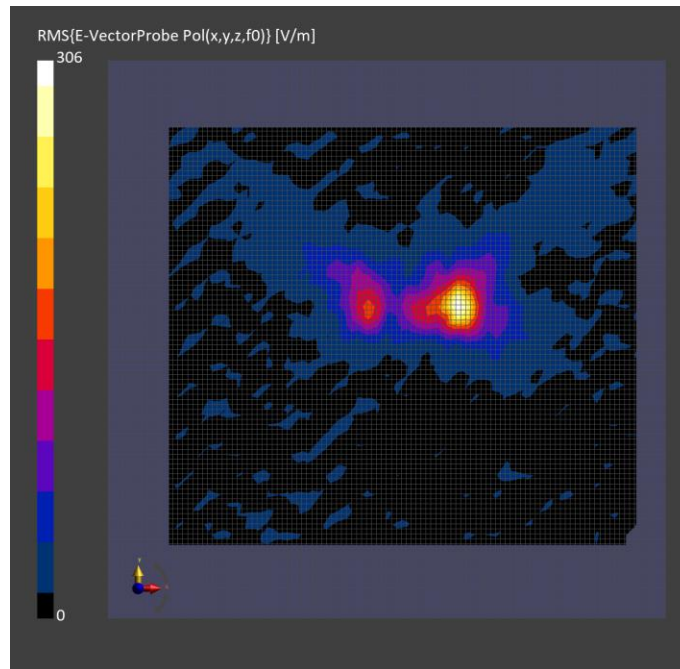
	5G Scan
Grid Extents [mm]	x
Grid Steps [lambda]	x
Sensor Surface [mm]	
MAIA	

Measurement Results

	5G Scan
Date	
Avg. Area [cm ²]	
psPDn+ [W/m ²]	
psPDtot+ [W/m ²]	
psPDmod+ [W/m ²]	
E _{max} [V/m]	
Power Drift [dB]	

Warning(s) / Error(s)

Details	5G Scan
Warning(s)	
Error(s)	



Plot 1

Beam 7 – Top – 5mm

Device under Test Properties

Model, Manufacturer	Dimensions [mm]	IMEI	DUT Type
,	x x		60 GHz device

Exposure Conditions

Phantom Section	Position, Test Distance [mm]	Band	Group, UID	Frequency [MHz], Channel Number	Conversion Factor
,	,		-	60480	

Hardware Setup

Phantom	Medium	Probe, Calibration Date	DAE, Calibration Date
-		,	,

Scan Setup

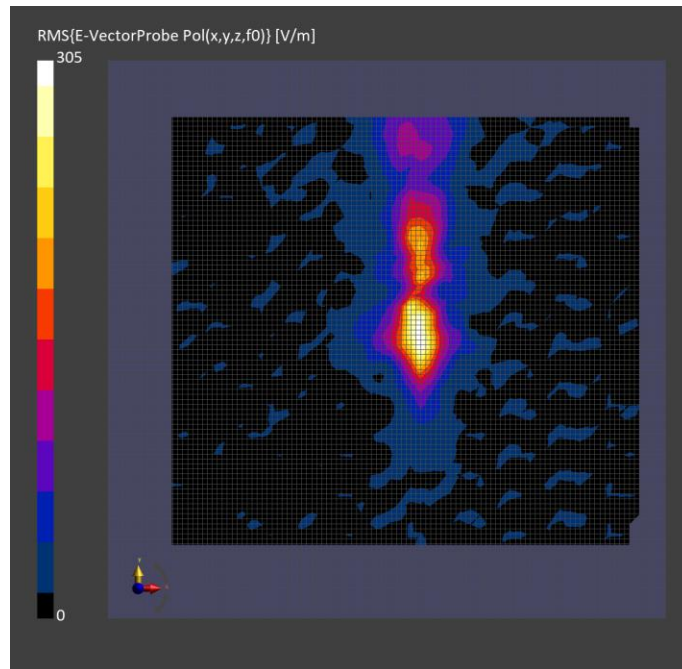
	5G Scan
Grid Extents [mm]	x
Grid Steps [lambda]	x
Sensor Surface [mm]	
MAIA	

Measurement Results

	5G Scan
Date	
Avg. Area [cm ²]	
psPDn+ [W/m ²]	
psPDtot+ [W/m ²]	
psPDmod+ [W/m ²]	
E _{max} [V/m]	
Power Drift [dB]	

Warning(s) / Error(s)

Details	5G Scan
Warning(s)	
Error(s)	



Plot 2

Beam 8 – Top – 5mm

Device under Test Properties

Model, Manufacturer	Dimensions [mm]	IMEI	DUT Type
XCOM, TX	46.5 x 55.0 x 29.0		60 GHz device

Exposure Conditions

Phantom Section	Position, Test Distance [mm]	Band	Group, UID	Frequency [MHz], Channel Number	Conversion Factor
5G Air	TOP, 5.00	Validation band	CW, 0--	60480.0, 60480	1.0

Hardware Setup

Phantom	Medium	Probe, Calibration Date	DAE, Calibration Date
mmWave- xxxx	---Air	EUmmWV4 - SN9496_F55-110GHz, 2023-02-20	DAE4 Sn1540, 2023-01-23

Scan Setup

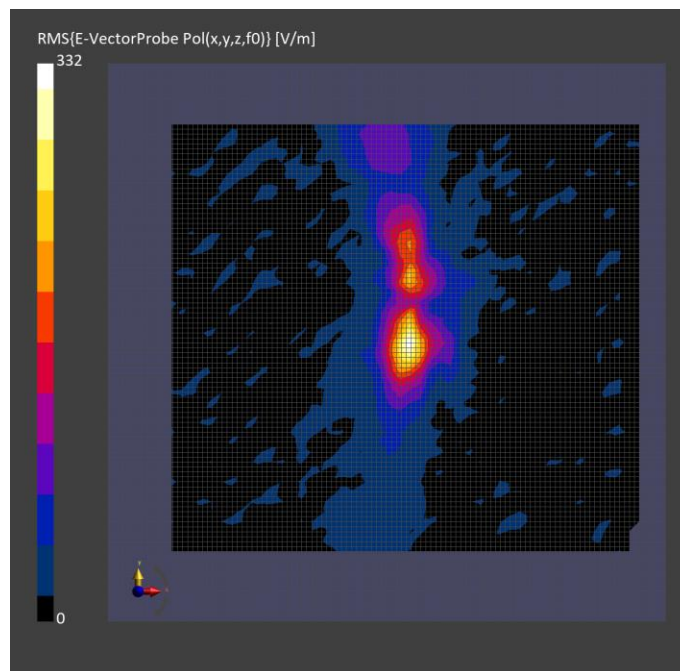
5G Scan
Grid Extents [mm]
Grid Steps [lambda]
Sensor Surface [mm]
MAIA

Measurement Results

5G Scan
Date
Avg. Area [cm ²]
psPDn+ [W/m ²]
psPDtot+ [W/m ²]
psPDmod+ [W/m ²]
E _{max} [V/m]
Power Drift [dB]

Warning(s) / Error(s)

Details	5G Scan
Warning(s)	
Error(s)	



Plot 3

Beam 9 – Top – 5mm

Device under Test Properties

Model, Manufacturer	Dimensions [mm]	IMEI	DUT Type
,	x x		60 GHz device

Exposure Conditions

Phantom Section	Position, Test Distance [mm]	Band	Group, UID	Frequency [MHz], Channel Number	Conversion Factor
,	,		,	60480	

Hardware Setup

Phantom	Medium	Probe, Calibration Date	DAE, Calibration Date
-		,	,

Scan Setup

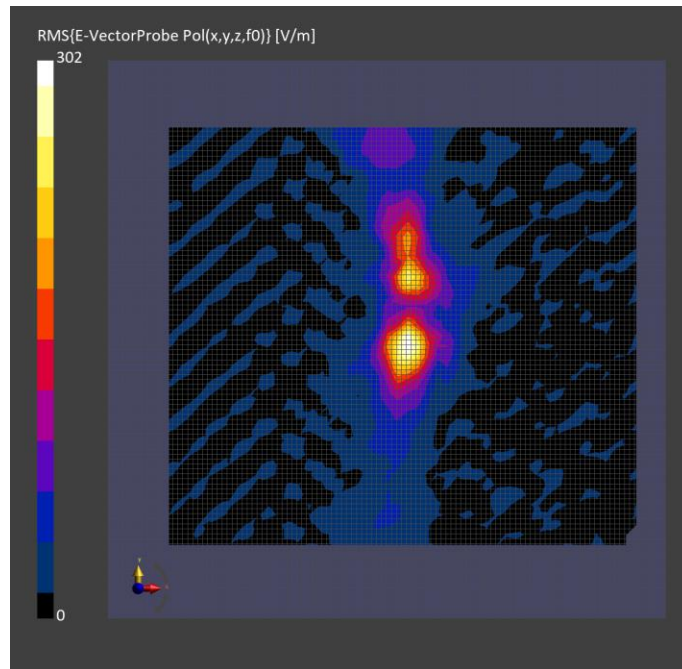
	5G Scan
Grid Extents [mm]	x
Grid Steps [lambda]	x
Sensor Surface [mm]	
MAIA	

Measurement Results

	5G Scan
Date	
Avg. Area [cm ²]	
psPDn+ [W/m ²]	
psPDtot+ [W/m ²]	
psPDmod+ [W/m ²]	
E _{max} [V/m]	
Power Drift [dB]	

Warning(s) / Error(s)

Details	5G Scan
Warning(s)	
Error(s)	



Plot 4

Beam 10 – Top – 5mm

Device under Test Properties

Model, Manufacturer	Dimensions [mm]	IMEI	DUT Type
XCOM, TX	46.5 x 55.0 x 29.0		60 GHz device60480

Exposure Conditions

Phantom Section	Position, Test Distance [mm]	Band	Group, UID	Frequency [MHz], Channel Number	Conversion Factor
5G Air	TOP, 5.00	Validation band	CW, 0--	60480.0, 60480	1.0

Hardware Setup

Phantom	Medium	Probe, Calibration Date	DAE, Calibration Date
mmWave- xxxx	---Air	EUmmWV4 - SN9496_F55-110GHz, 2023-02-20	DAE4 Sn1540, 2023-01-23

Scan Setup

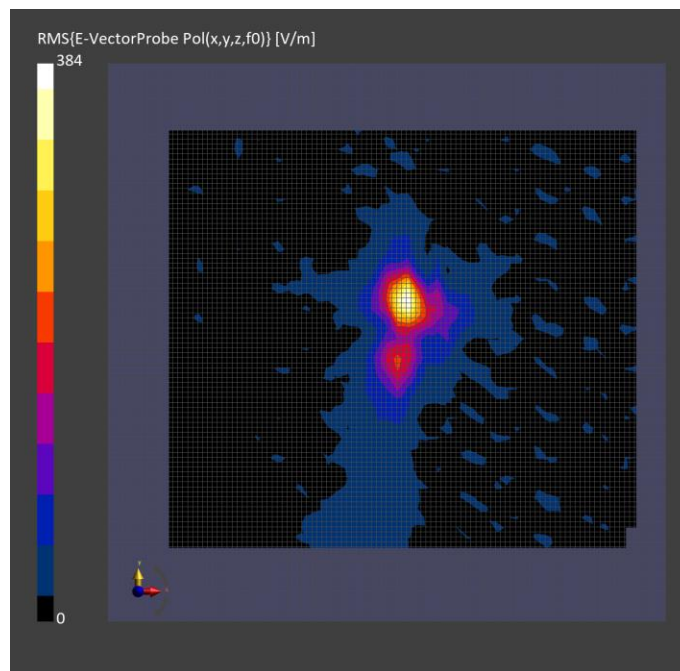
5G Scan
Grid Extents [mm]
Grid Steps [lambda]
Sensor Surface [mm]
MAIA

Measurement Results

5G Scan
Date
Avg. Area [cm ²]
psPDn+ [W/m ²]
psPDtot+ [W/m ²]
psPDmod+ [W/m ²]
E _{max} [V/m]
Power Drift [dB]

Warning(s) / Error(s)

Details	5G Scan
Warning(s)	
Error(s)	



Plot 5

Beam 11 – Top – 5mm

Device under Test Properties

Model, Manufacturer	Dimensions [mm]	IMEI	DUT Type
,	x x		

Exposure Conditions

Phantom Section	Position, Test Distance [mm]	Band	Group, UID	Frequency [MHz], Channel Number	Conversion Factor
,	,		-	,	

Hardware Setup

Phantom	Medium	Probe, Calibration Date	DAE, Calibration Date
-		,	,

Scan Setup

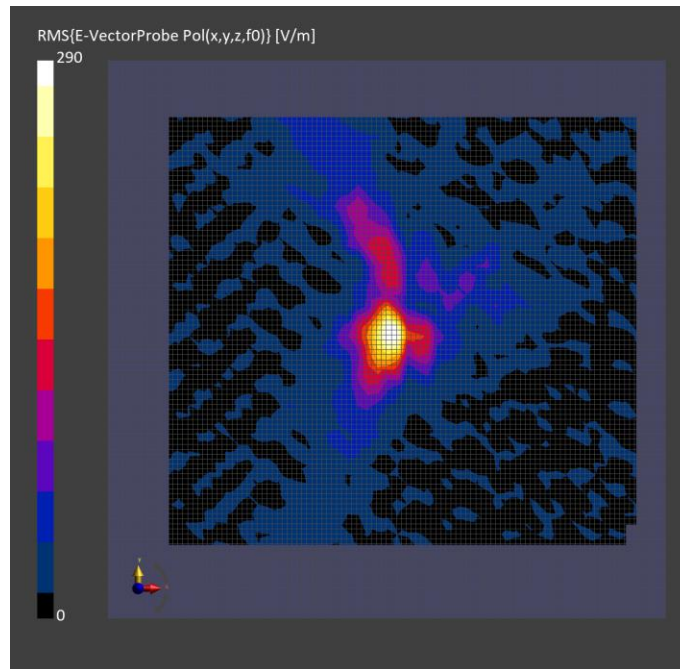
	5G Scan
Grid Extents [mm]	x
Grid Steps [lambda]	x
Sensor Surface [mm]	
MAIA	

Measurement Results

	5G Scan
Date	
Avg. Area [cm ²]	
psPDn+ [W/m ²]	
psPDtot+ [W/m ²]	
psPDmod+ [W/m ²]	
E _{max} [V/m]	
Power Drift [dB]	

Warning(s) / Error(s)

Details	5G Scan
Warning(s)	
Error(s)	



Plot 6

Beam 12 – Top – 5mm

Device under Test Properties

Model, Manufacturer	Dimensions [mm]	IMEI	DUT Type
XCOM, TX	46.5 x 55.0 x 29.0		60 GHz device60480

Exposure Conditions

Phantom Section	Position, Test Distance [mm]	Band	Group, UID	Frequency [MHz], Channel Number	Conversion Factor
5G Air	TOP, 5.00	Validation band	CW, 0--	60480.0, 60480	1.0

Hardware Setup

Phantom	Medium	Probe, Calibration Date	DAE, Calibration Date
mmWave- xxxx	---Air	EUmmWV4 - SN9496_F55-110GHz, 2023-02-20	DAE4 Sn1540, 2023-01-23

Scan Setup

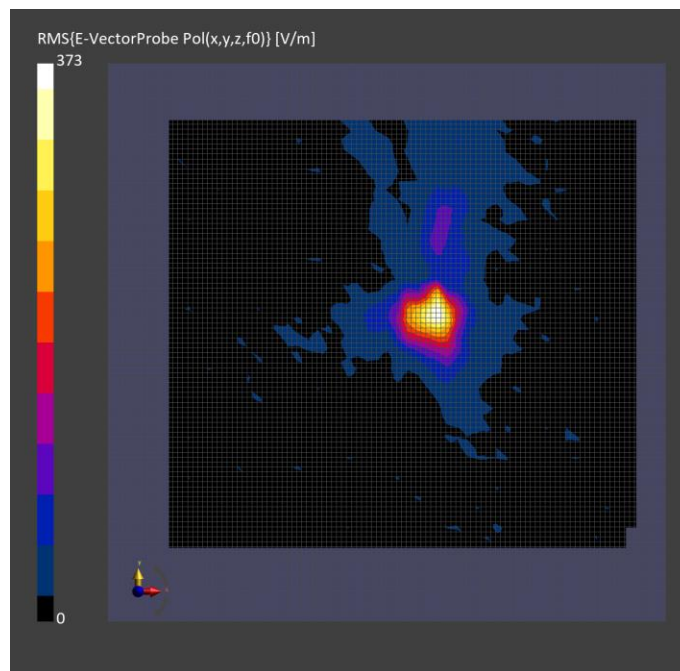
5G Scan
Grid Extents [mm]
Grid Steps [lambda]
Sensor Surface [mm]
MAIA

Measurement Results

5G Scan
Date
Avg. Area [cm ²]
psPDn+ [W/m ²]
psPDtot+ [W/m ²]
psPDmod+ [W/m ²]
E _{max} [V/m]
Power Drift [dB]

Warning(s) / Error(s)

Details	5G Scan
Warning(s)	
Error(s)	



Plot 7

Beam 0 – Side – 2mm

Device under Test Properties

Model, Manufacturer	Dimensions [mm]	IMEI	DUT Type
,	x x		

Exposure Conditions

Phantom Section	Position, Test Distance [mm]	Band	Group, UID	Frequency [MHz], Channel Number	Conversion Factor
,	,		-	,	

Hardware Setup

Phantom	Medium	Probe, Calibration Date	DAE, Calibration Date
-		,	,

Scan Setup

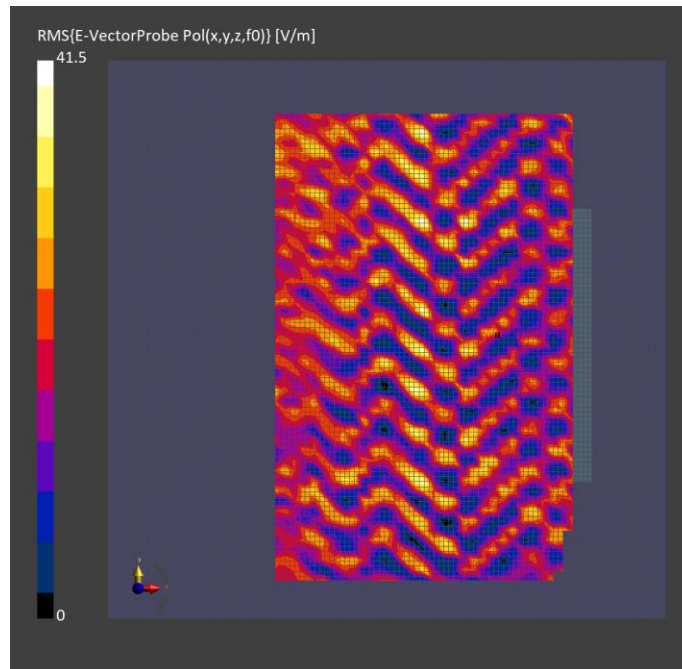
	5G Scan
Grid Extents [mm]	x
Grid Steps [lambda]	x
Sensor Surface [mm]	
MAIA	

Measurement Results

	5G Scan
Date	
Avg. Area [cm ²]	
psPDn+ [W/m ²]	
psPDtot+ [W/m ²]	
psPDmod+ [W/m ²]	
E _{max} [V/m]	
Power Drift [dB]	

Warning(s) / Error(s)

Details	5G Scan
Warning(s)	
Error(s)	



Plot 8

Beam 7 – Side – 2mm

Device under Test Properties

Model, Manufacturer	Dimensions [mm]	IMEI	DUT Type
,	x x		

Exposure Conditions

Phantom Section	Position, Test Distance [mm]	Band	Group, UID	Frequency [MHz], Channel Number	Conversion Factor
,	,		-	,	

Hardware Setup

Phantom	Medium	Probe, Calibration Date	DAE, Calibration Date
-		,	,

Scan Setup

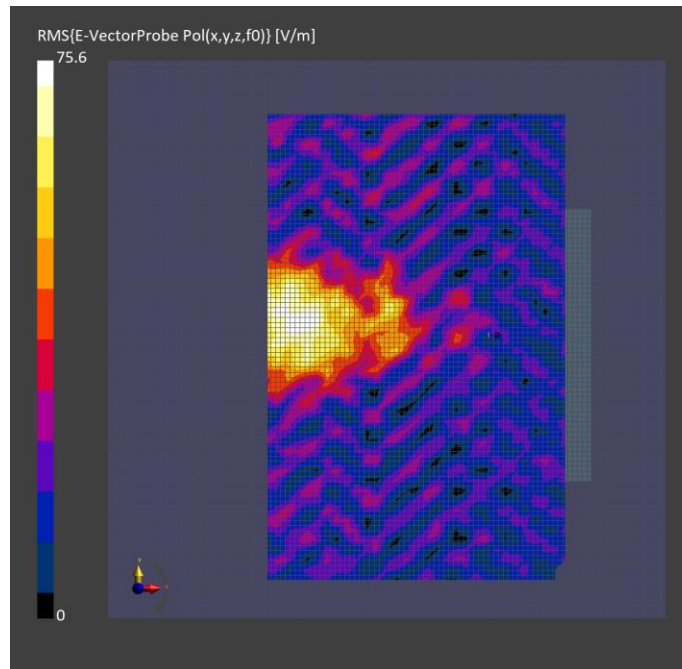
	5G Scan
Grid Extents [mm]	x
Grid Steps [lambda]	x
Sensor Surface [mm]	
MAIA	

Measurement Results

	5G Scan
Date	
Avg. Area [cm ²]	
psPDn+ [W/m ²]	
psPDtot+ [W/m ²]	
psPDmod+ [W/m ²]	
E _{max} [V/m]	
Power Drift [dB]	

Warning(s) / Error(s)

Details	5G Scan
Warning(s)	
Error(s)	



Plot 9

Beam 8 – Side – 2mm

Device under Test Properties

Model, Manufacturer	Dimensions [mm]	IMEI	DUT Type
,	x x		

Exposure Conditions

Phantom Section	Position, Test Distance [mm]	Band	Group, UID	Frequency [MHz], Channel Number	Conversion Factor
,	,		-	,	

Hardware Setup

Phantom	Medium	Probe, Calibration Date	DAE, Calibration Date
-		,	,

Scan Setup

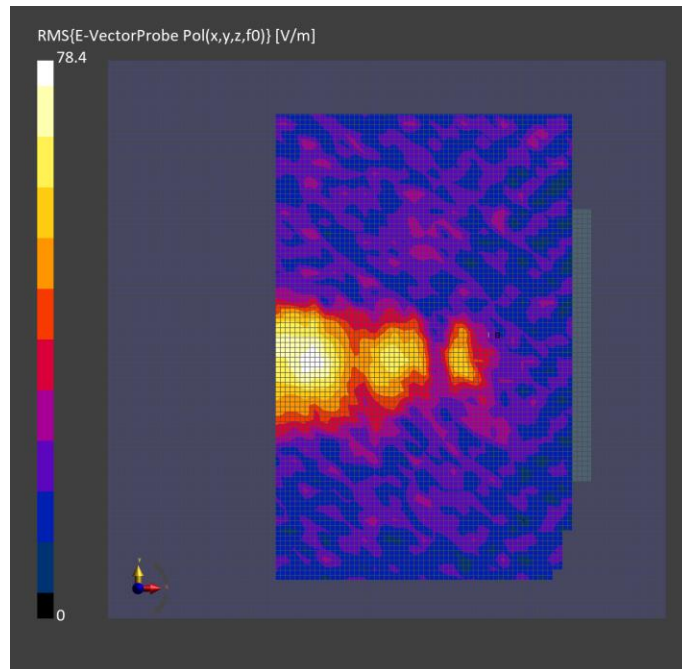
	5G Scan
Grid Extents [mm]	x
Grid Steps [lambda]	x
Sensor Surface [mm]	
MAIA	

Measurement Results

	5G Scan
Date	
Avg. Area [cm ²]	
psPDn+ [W/m ²]	
psPDtot+ [W/m ²]	
psPDmod+ [W/m ²]	
E _{max} [V/m]	
Power Drift [dB]	

Warning(s) / Error(s)

Details	5G Scan
Warning(s)	
Error(s)	



Beam 9 – Side – 2mm

Device under Test Properties

Model, Manufacturer	Dimensions [mm]	IMEI	DUT Type
XCOM, TX	46.5 x 55.0 x 29.0		60 GHz device60480

Exposure Conditions

Phantom Section	Position, Test Distance [mm]	Band	Group, UID	Frequency [MHz], Channel Number	Conversion Factor
5G Air	EDGE SIDE, 2.00	Validation band	CW, 0--	60480.0, 60480	1.0

Hardware Setup

Phantom	Medium	Probe, Calibration Date	DAE, Calibration Date
mmWave- xxxx	---Air	EUmmWV4 - SN9496_F55-110GHz, 2023-02-20	DAE4 Sn1540, 2023-01-23

Scan Setup

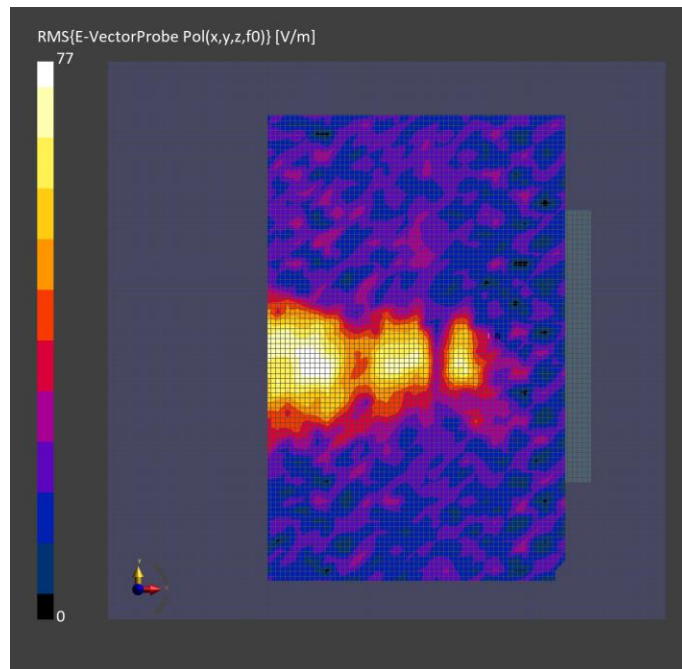
5G Scan
Grid Extents [mm]
Grid Steps [lambda]
Sensor Surface [mm]
MAIA

Measurement Results

5G Scan
Date
Avg. Area [cm ²]
psPDn+ [W/m ²]
psPDtot+ [W/m ²]
psPDmod+ [W/m ²]
E _{max} [V/m]
Power Drift [dB]

Warning(s) / Error(s)

Details	5G Scan
Warning(s)	
Error(s)	



Plot 11

Beam 10 – Side – 2mm

Device under Test Properties

Model, Manufacturer	Dimensions [mm]	IMEI	DUT Type
,	x x		

Exposure Conditions

Phantom Section	Position, Test Distance [mm]	Band	Group, UID	Frequency [MHz], Channel Number	Conversion Factor
,	,		-	,	

Hardware Setup

Phantom	Medium	Probe, Calibration Date	DAE, Calibration Date
-		,	,

Scan Setup

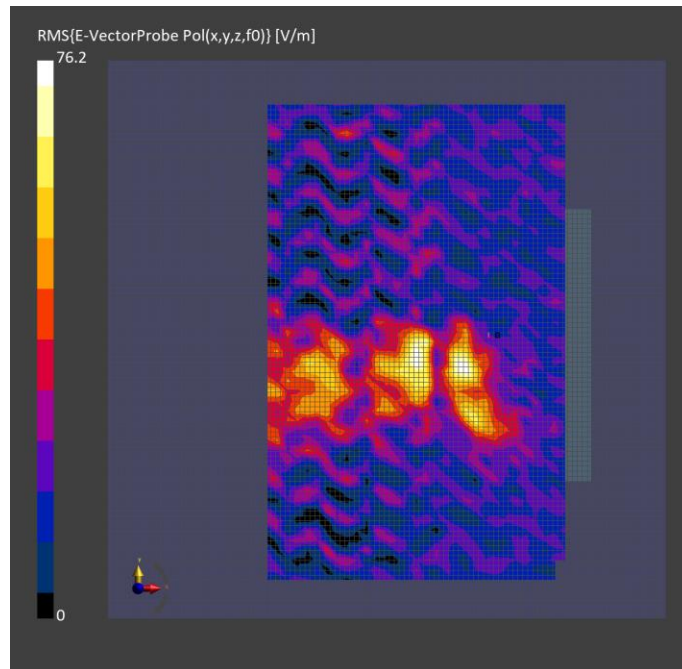
	5G Scan
Grid Extents [mm]	x
Grid Steps [lambda]	x
Sensor Surface [mm]	
MAIA	

Measurement Results

	5G Scan
Date	
Avg. Area [cm ²]	
psPDn+ [W/m ²]	
psPDtot+ [W/m ²]	
psPDmod+ [W/m ²]	
E _{max} [V/m]	
Power Drift [dB]	

Warning(s) / Error(s)

Details	5G Scan
Warning(s)	
Error(s)	



Plot 12

Beam 11 – Side – 2mm

Device under Test Properties

Model, Manufacturer	Dimensions [mm]	IMEI	DUT Type
,	x x		

Exposure Conditions

Phantom Section	Position, Test Distance [mm]	Band	Group, UID	Frequency [MHz], Channel Number	Conversion Factor
,	,		-	,	

Hardware Setup

Phantom	Medium	Probe, Calibration Date	DAE, Calibration Date
-		,	,

Scan Setup

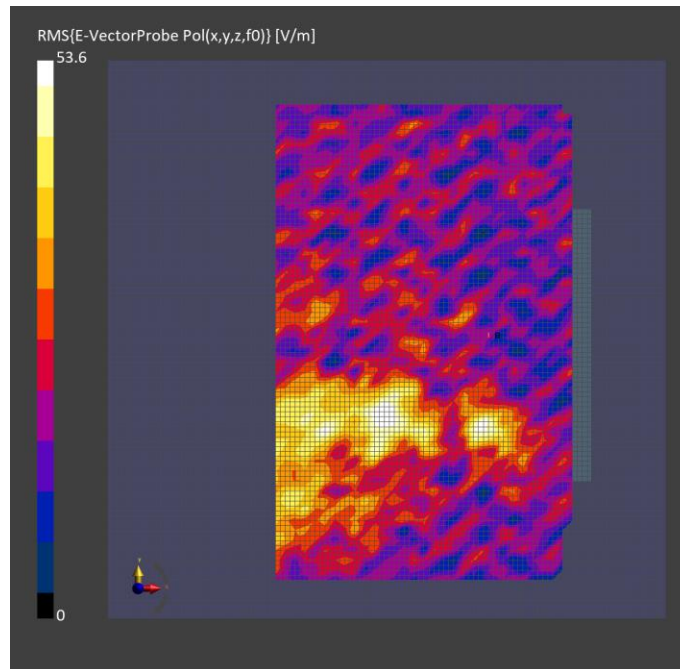
	5G Scan
Grid Extents [mm]	x
Grid Steps [lambda]	x
Sensor Surface [mm]	
MAIA	

Measurement Results

	5G Scan
Date	
Avg. Area [cm ²]	
psPDn+ [W/m ²]	
psPDtot+ [W/m ²]	
psPDmod+ [W/m ²]	
E _{max} [V/m]	
Power Drift [dB]	

Warning(s) / Error(s)

Details	5G Scan
Warning(s)	
Error(s)	



Beam 12– Side – 2mm

Device under Test Properties

Model, Manufacturer	Dimensions [mm]	IMEI	DUT Type
,	x x		

Exposure Conditions

Phantom Section	Position, Test Distance [mm]	Band	Group, UID	Frequency [MHz], Channel Number	Conversion Factor
,	,		-	,	

Hardware Setup

Phantom	Medium	Probe, Calibration Date	DAE, Calibration Date
-		,	,

Scan Setup

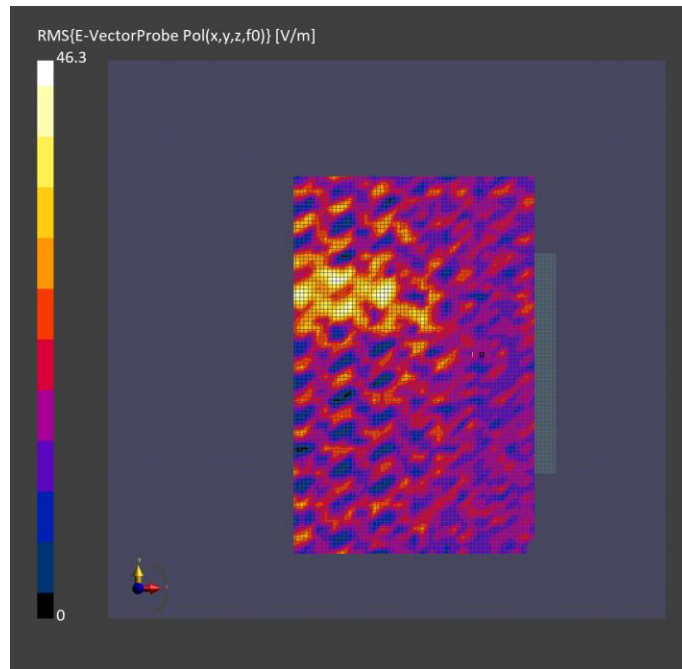
	5G Scan
Grid Extents [mm]	x
Grid Steps [lambda]	x
Sensor Surface [mm]	
MAIA	

Measurement Results

	5G Scan
Date	
Avg. Area [cm ²]	
psPDn+ [W/m ²]	
psPDtot+ [W/m ²]	
psPDmod+ [W/m ²]	
E _{max} [V/m]	
Power Drift [dB]	

Warning(s) / Error(s)

Details	5G Scan
Warning(s)	
Error(s)	



Plot 14