

Thank you for purchasing the Atomi Magnetic Foldable Charging Station

The Magnetic Foldable Charging Station is compact, portable, and powerfully charges your Apple devices. Designed with magnetic Qi and wireless charging pads, it can support any two of your Apple Watch® and AirPods® or iPhone® at once. For single-device use, this charging station folds and magnetically attaches to your iPhone® 12/13.

What's Inside

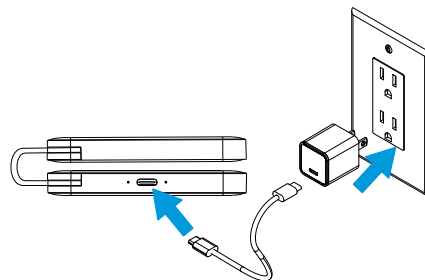
- 3-in-1 Foldable Wireless Charger
- (2) Magnetic Stickers
- USB-C Cable

Specifications

- Input: 5VDC3A, 9VDC2.22A
- iWatch Wireless Charging Output: 3W
- Qi Wireless Charging Output: 15W
- Magnetic Wireless Charging Output: 15W

Powering your Foldable Charging Station

Connect the included USB-C cable to the charging port on your Foldable Charging Station. Then connect the other end of the USB-C cable to any USB-C charger adapter (not included).

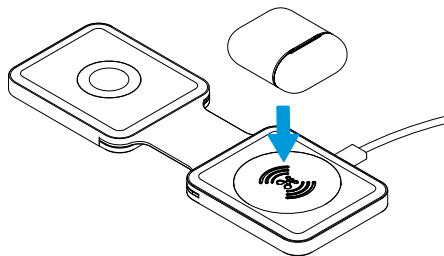
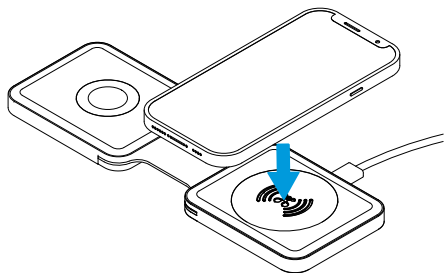


NOTE: USB-C Wall Charger not included

To use the fast charging feature, use a 20W PD charger adapter.

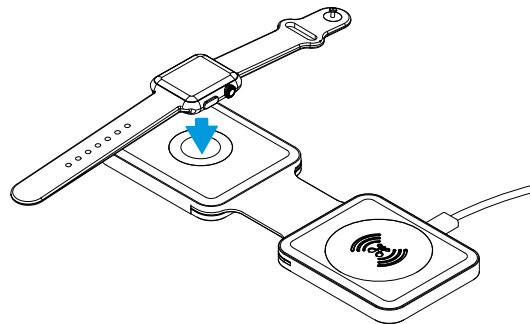
Magnetic Charging

Place your iPhone® or the AirPods® case near the magnetic area on the Foldable Charging Station. It will attract and attach to your phone. Charging will start automatically.

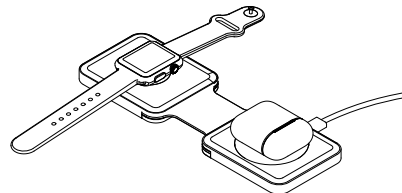
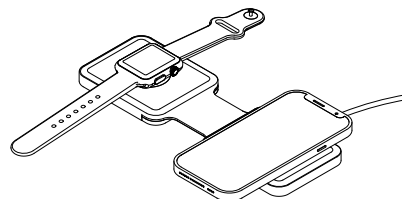


Charging your Apple Watch®

Place your Apple Watch® on its designated area.

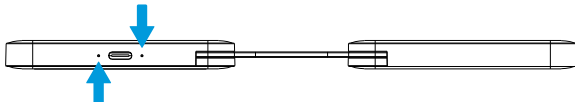


Charge two devices at the same time



Charging Indicator

Apple Watch® charging indicator
Solid blue: charging & fully charged
Flashing blue: failed charging



iPhone® or AirPods® case light indicator

iPhone®
Solid blue: charging
Green, then OFF after 30s: fully charged
Flashing blue: failed charging

AirPods®
Solid blue: charging & fully charged
Flashing blue: failed charging

For questions or concerns, email us at info@atomiusa.com
Manufactured and marketed by Atomi Inc.
10 West 33rd St., New York, NY 10001
atomi™ is a trademark of Atomi Inc.
Designed by Atomi in New York. Made in China
One-year limited warranty from the date of purchase
against defects in material and workmanship.

Safety Information

1. Read these instructions carefully for best use.
2. DO NOT use the Foldable Charging Station near water or expose it to rain or moisture.
3. DO NOT use the Foldable Charging Station near open flames, such as candles, heat sources, radiators and stoves.

4. Only clean the Foldable Charging Station with a dry cloth.
5. Caution: Risk of electric shock. Grounding continuity must be maintained.
6. For connection to a power supply not in the U.S.A., use an attachment plug adapter of the proper configuration for the power outlet, if needed.
7. Please check prior use, if output voltage and current of the power supply is suitable for the product.
8. Children should be supervised to ensure that they do not play with the appliance.

FCC Warning

This device complies with part 15 of the FCC Rules. Operation is subject to the following two conditions: (1) This device may not cause harmful interference, and (2) this device must accept any interference received, including interference that may cause undesired operation. Any Changes or modifications not expressly approved by the party responsible for compliance could void the user's authority to operate the equipment.

This equipment has been tested and found to comply with the limits for a Class B digital device, pursuant to part 15 of the FCC Rules. These limits are designed to provide reasonable protection against harmful interference in a residential installation. This equipment generates uses and can radiate radio frequency energy and, if not installed and used in accordance with the instructions, may cause harmful interference to radio communications. However, there is no guarantee that interference will not occur in a particular installation. If this equipment does cause harmful interference to radio or television reception, which can be determined by turning the equipment off and on, the user is encouraged to try to correct the interference by one or more of the following measures:

- Reorient or relocate the receiving antenna.
- Increase the separation between the equipment and receiver.
- Connect the equipment into an outlet on a circuit different from that to which the receiver is connected.
- Consult the dealer or an experienced radio/TV technician for help.

FCC RF exposure statement:

The equipment complies with FCC radiation exposure limits set forth for an uncontrolled environment. This equipment should be installed and operated with minimum distance between 20cm the radiator your body.