

Need assistance?



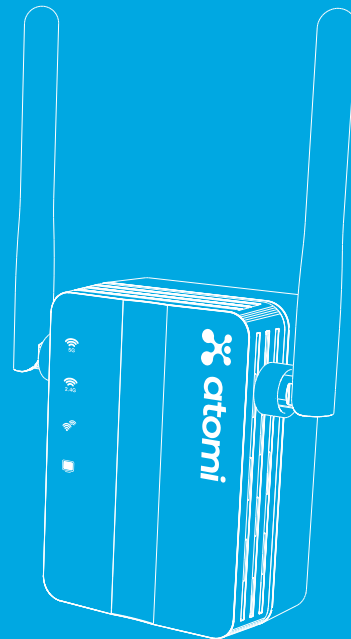
**DO NOT RETURN THIS  
PRODUCT TO THE STORE**

Call 1-800-757-1440  
Mon-Fri 9:00 a.m. - 5:00 p.m. EST (US)  
or email us at [info@atomiusa.com](mailto:info@atomiusa.com)

 atomi™

# WiFi Range Extender

User Manual



Date Code: 09/20

## Thank you for purchasing the atomi WiFi Range Extender

Say goodbye to deadzones and say hello to better internet with the atomi WiFi Range Extender.

It increases your router's range and strengthens your WiFi connection.

Now you'll be able to stream movies in the backyard, and pick up a strong signal from anywhere in the house!

## What's Inside

Wifi Range Extender

## Specifications

Wireless Speed: Up to 750Mbps

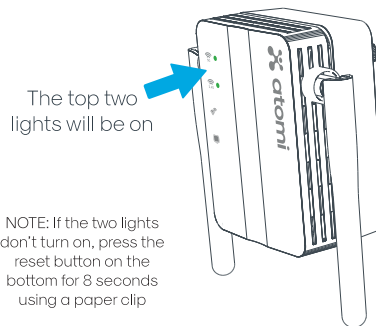
Frequency Range: 2.4G & 5.8G

Support Operating System: Windows XP/Vista/Win 7/Win8 /Win8.1 /Win10 /Linux /Mac OS

## Smartphone Setup

1

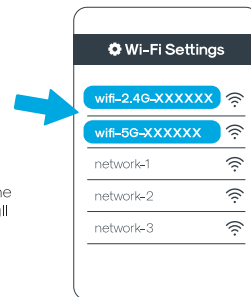
Plug your WiFi Extender into any outlet



2

Connect your extender SSID

Both 2.4G and 5G are available. Choose 5G to set up



NOTE: You cannot surf the Internet until you finish all the setting steps

3

Sign in to the management page

Use the browser to open the management page. It is recommended that you use Google Chrome or Mozilla Firefox.

Please type the address **192.168.188.1** on the URL bar.

NOTE:  
Make sure you are connected to the SSID (wifi-5G-XXXXXX) of the WiFi Extender successfully

4

Scan and select your SSID host router

Please select the main router to be extended

- router-1
- my-router**
- router-2

Scan

5

Enter the password for your host router and press **Next**

Please enter the password of the host router

Wireless Name  
my-router

Wireless Password  
.....

Back Next

6

Set your Extender SSID and password, and press **Next**

Please enter expander wireless password

Wireless Name 2,4G  
my-router-pro-2,4G

Wireless Name 5G  
my-router-pro-5G

Wireless Password  
.....

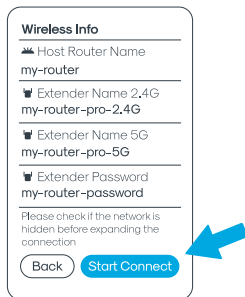
Hidden Network

Back Next

Note:  
You can change the default Network names and password

7

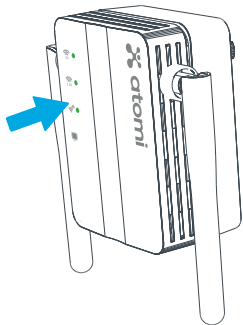
Check the details and make a note of the Wireless info, then press **Start Connect** and wait 30-60 seconds



8

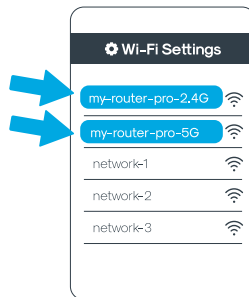
When you finish setting up, please wait 30-40 seconds until the extender light turns on

When the Extender light is on, the setup was successfully done



9

Connect to your WiFi Extender

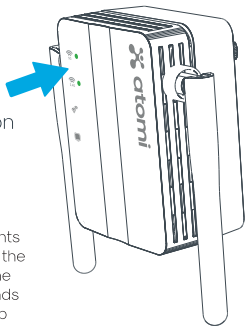


## Computer Setup

1

Plug your WiFi Extender into any outlet

The top two lights will be on

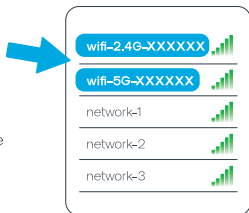


NOTE: If the two lights don't turn on, press the reset button on the bottom for 8 seconds using a paper clip

2

Connect your extender SSID

Both 2.4G and 5G are available. Choose 5G to set up



NOTE: You cannot surf the Internet until you finish all the setting steps

3

Sign in to the management page

Use the browser to open the management page. It is recommended that you use Google Chrome or Mozilla Firefox.

Please type the address **192.168.188.1** on the URL bar.

NOTE:  
Make sure you are connected to the SSID (wifi-5G-XXXXXX) of the WiFi Extender successfully

4

Scan and select your SSID host router

Note:  
Both 2.4G and 5G wireless can be extended. Please, extend one at the time

Please select the main router to be extended

Wireless Name	MAC	Channel	Auth Mode	Signal
router-1	xxxxxxx	149	WPA2-PSK	📶
<b>my-router</b>	xxxxxxx	36	WPA-PSK	📶
router-2	xxxxxxx	1	WPA2-PSK	📶
router-3	xxxxxxx	1	WPA2-PSK	📶

A blue arrow points to the 'my-router' entry in the table, which is highlighted with a blue bar.

Different channels working together may interfere with the signal and the network speed will get slow. Please, change the main router channel in time

5

Enter the password for your host router and press **Next**

**Please enter the password of the host router**

Wireless Name

Wireless Password

Show Password

6

Set your Extender SSID and password, and press **Next**

Note:  
You can  
change  
the default  
Network  
names  
and  
password

**Please enter expander wireless password**

Wireless Name 2.4G

Wireless Name 5G  Recommended

Auth Mode

Encryp Type

Wireless Password

Show Password

Hidden Network

7

Check the details and make a note of the Wireless info, then press **Start Connect** and wait 30-60 seconds

Host Router Name

Extender Name 2.4G

Extender Name 5G

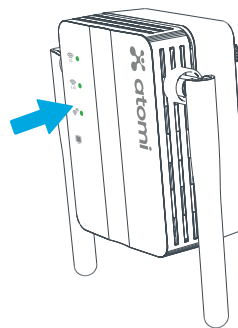
Extender Password

Please check if the network is hidden before expanding the connection

8

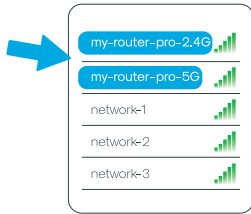
Once you've finished setting up, please wait 30-40 seconds until the extender light turns on

When the third light comes on, the Extender set up was successfully done



9

Connect to your WiFi Extender



## FCC Caution:

This device complies with Part 15 of the FCC Rules.

Operation is subject to the following two conditions:

- (1) This device may not cause harmful interference, and
- (2) This device must accept any interference received, including interference that may cause undesired operation.

Any changes or modifications not expressly approved by the party responsible for compliance could void the user's authority to operate the equipment.

### NOTE:

This equipment has been tested and found to comply with the limits for a Class B digital device, pursuant to Part 15 of the FCC Rules. These limits are designed to provide reasonable protection against harmful interference in a residential installation. This equipment generates, uses, and can radiate radio frequency energy and, if not installed and used in accordance with the instructions, may cause harmful interference to radio communications. However, there is no guarantee that interference will not occur in a particular installation. If this equipment does cause harmful interference to radio or television reception, which can be determined by turning the equipment off and on, the user is encouraged to try to correct the interference by one more of the following measures:

- Reorient or relocate the receiving antenna.
- Increase the distance between the equipment and receiver.
- Connect the equipment into an outlet on a circuit different from that to which the receiver is connected.
- Consult the dealer or an experienced radio/TV technician for help.

This equipment complies with FCC radiation exposure limits set forth for an uncontrolled environment. This equipment should be installed and operated with minimum distance 20cm between the radiator & your body.

## Safety Information

1. Read these instructions carefully for best use.
2. DO NOT use the WIFI Range Extender near water or expose it to rain or moisture.
3. DO NOT use the WIFI Range Extender near open flames, such as candles, heat sources, radiators and stoves.
4. Only clean the WIFI Range Extender with a dry cloth.
5. Caution: Risk of electric shock. Grounding continuity must be maintained.
6. For connection to a supply not in the U.S.A., use an attachment plug adapter of the proper configuration for the power outlet. If needed.
7. Please check prior use, if output voltage and current of the power supply is suitable for the product.
8. Children should be supervised to ensure that they do not play with the appliance.

### FCC Caution:

This device complies with part 15 of the FCC Rules. Operation is subject to the following two conditions: (1) This device may not cause harmful interference, and (2) this device must accept any interference received, including interference that may cause undesired operation.

Any Changes or modifications not expressly approved by the party responsible for compliance could void the user's authority to operate the equipment.

**Note:** This equipment has been tested and found to comply with the limits for a Class B digital device, pursuant to part 15 of the FCC Rules. These limits are designed to provide reasonable protection against harmful interference in a residential installation. This equipment generates uses and can radiate radio frequency energy and, if not installed and used in accordance with the instructions, may cause harmful interference to radio communications. However, there is no guarantee that interference will not occur in a particular installation. If this equipment does cause harmful interference to radio or television reception, which can be determined by turning the equipment off and on, the user is encouraged to try to correct the interference by one or more of the following measures:

- Reorient or relocate the receiving antenna
- Increase the separation between the equipment and receiver.
- Connect the equipment into an outlet on a circuit different from that to which the receiver is connected.
- Consult the dealer or an experienced radio/TV technician for help.

This equipment complies with FCC radiation exposure limits set forth for an uncontrolled environment. This equipment should be installed and operated with minimum distance 20cm between the radiator & your body.

For questions or concerns, email us at [info@atomiusa.com](mailto:info@atomiusa.com)  
Manufactured and marketed by Atom! Inc.  
10 West 33rd St., New York, NY 10001  
atom!™ is a trademark of Atom! Inc.  
Designed by atom! in New York. Made in China

Two-year limited warranty from the date of purchase  
against defects in material and workmanship.