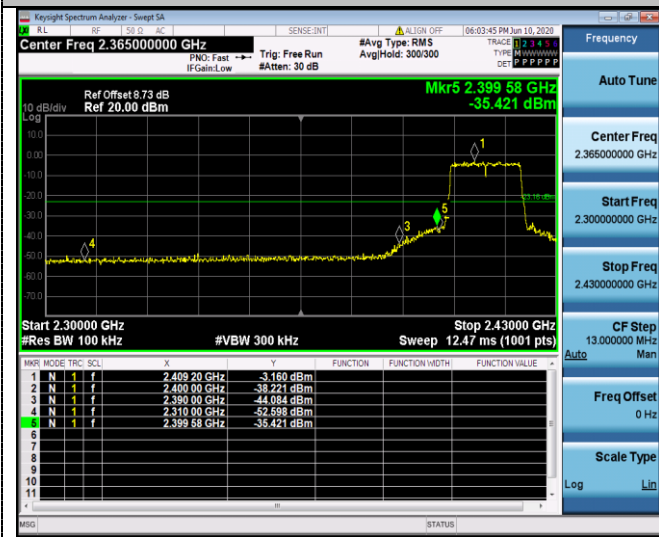
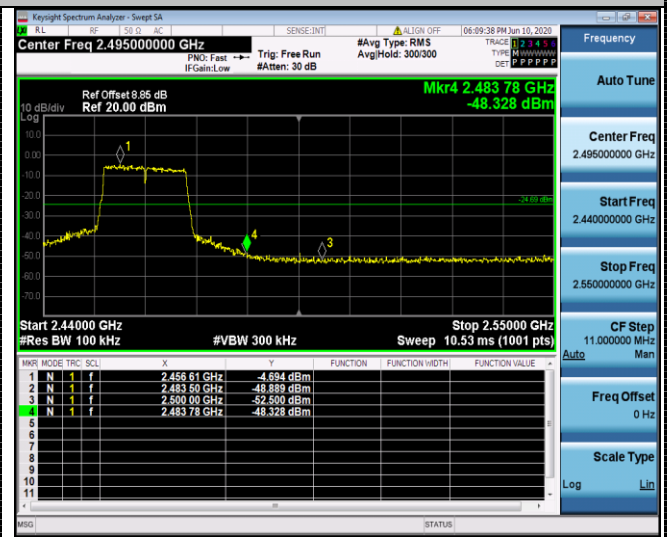


802.11n HT20



2412 MHz

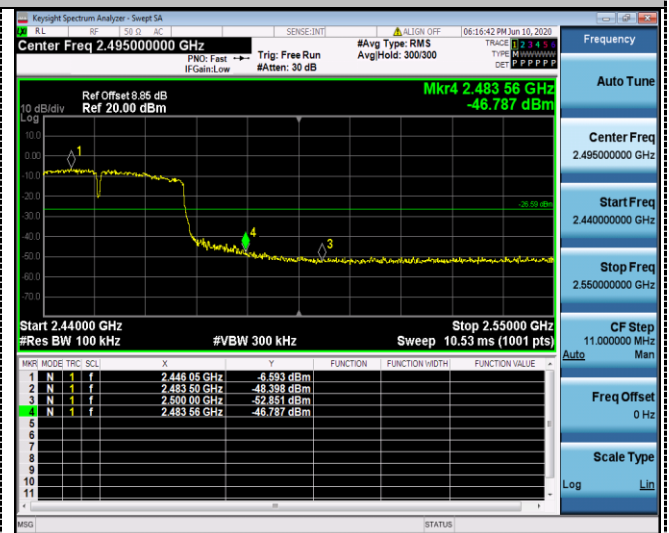


2462 MHz

802.11n HT40



2422 MHz



2452 MHz

4.7. Antenna Requirement

Standard Applicable

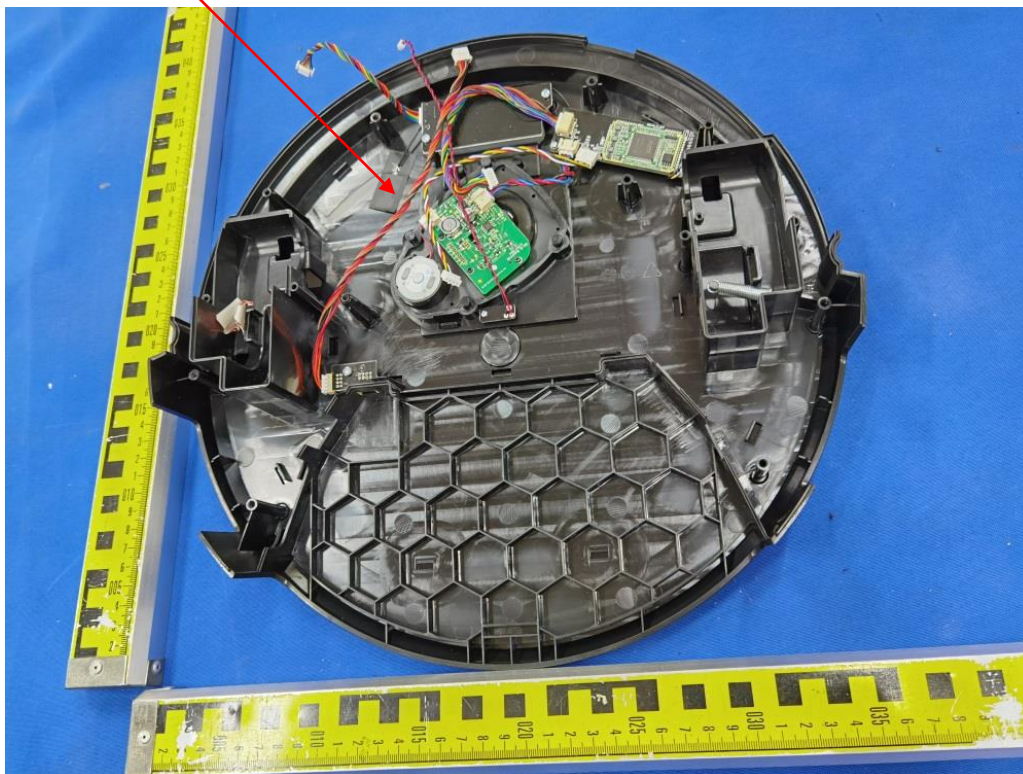
For intentional device, according to FCC 47 CFR Section 15.203, an intentional radiator shall be designed to ensure that no antenna other than that furnished by the responsible party shall be used with the device.

And according to FCC 47 CFR Section 15.247 (c), if transmitting antennas of directional gain greater than 6dBi are used, the power shall be reduced by the amount in dB that the directional gain of the antenna exceeds 6dBi.

Antenna Information

The antenna is Internal antenna, through the buckle stretched out, The directional gains of antenna used for transmitting is 2.23dBi.

Antenna



5. TEST SETUP PHOTOS OF THE EUT

Photo of Radiated Emissions Measurement

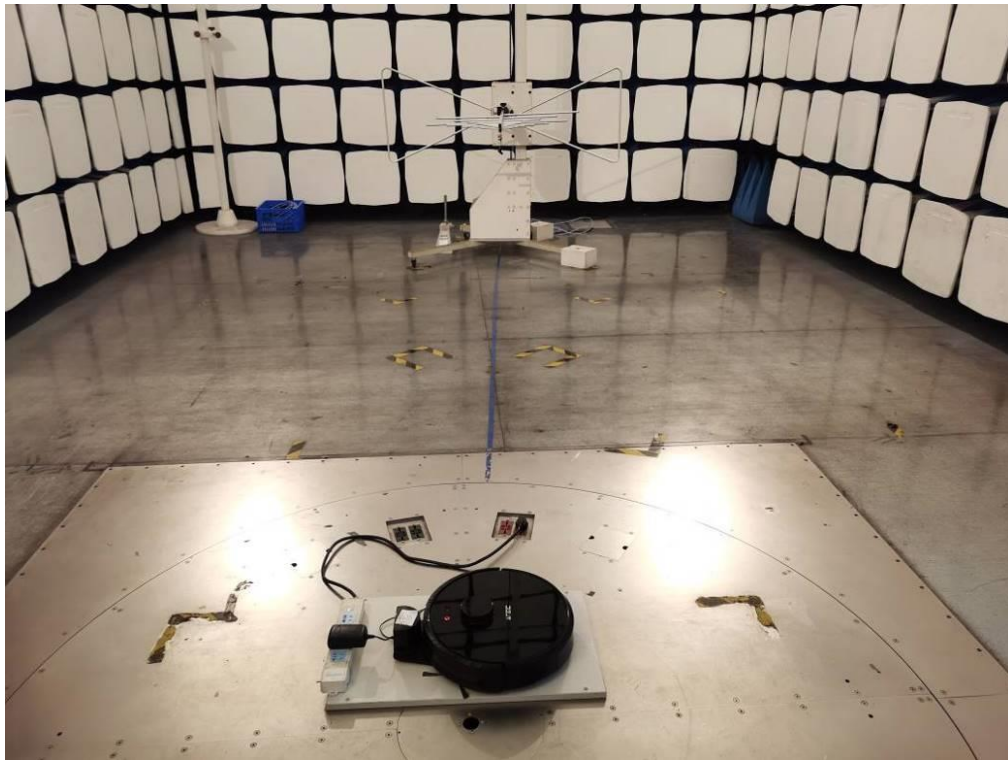


Fig. 1

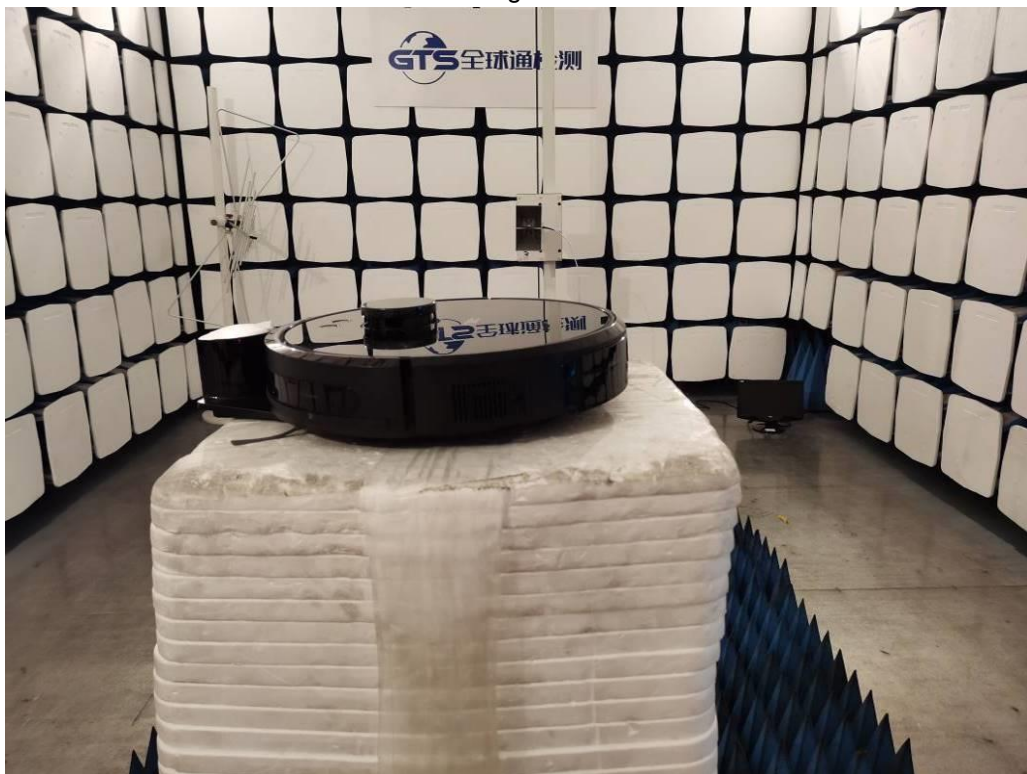


Fig. 2

Photo of Conducted Emissions Measurement

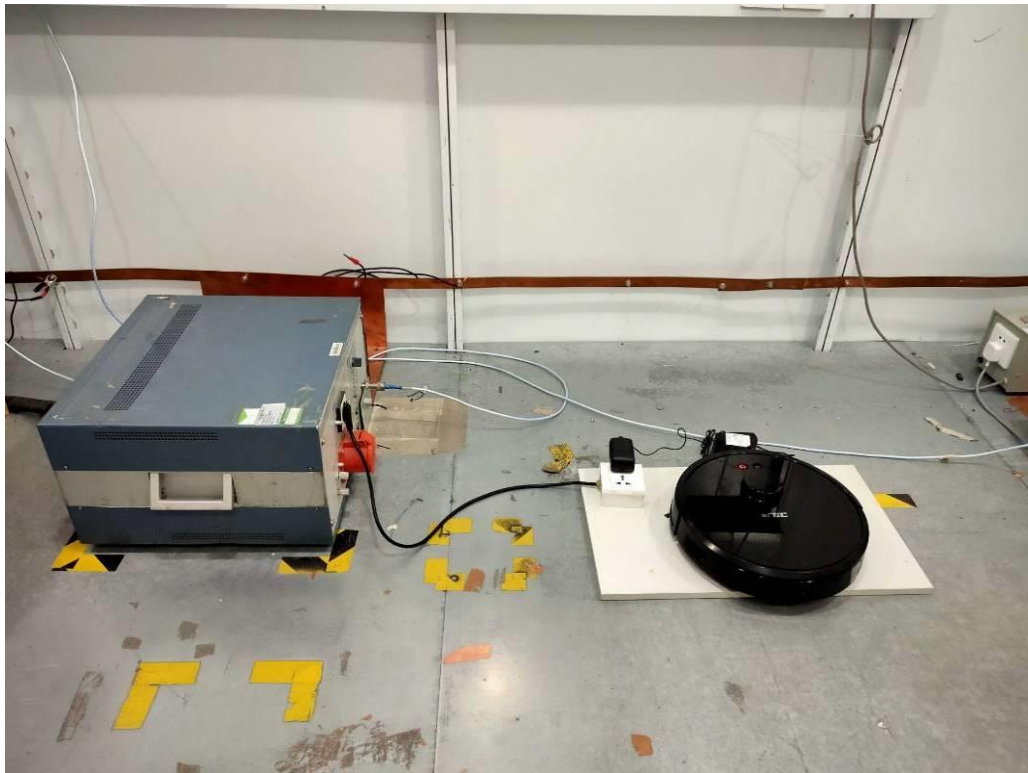


Fig. 3

6. EXTERNAL AND INTERNAL PHOTOS OF THE EUT



Fig. 1

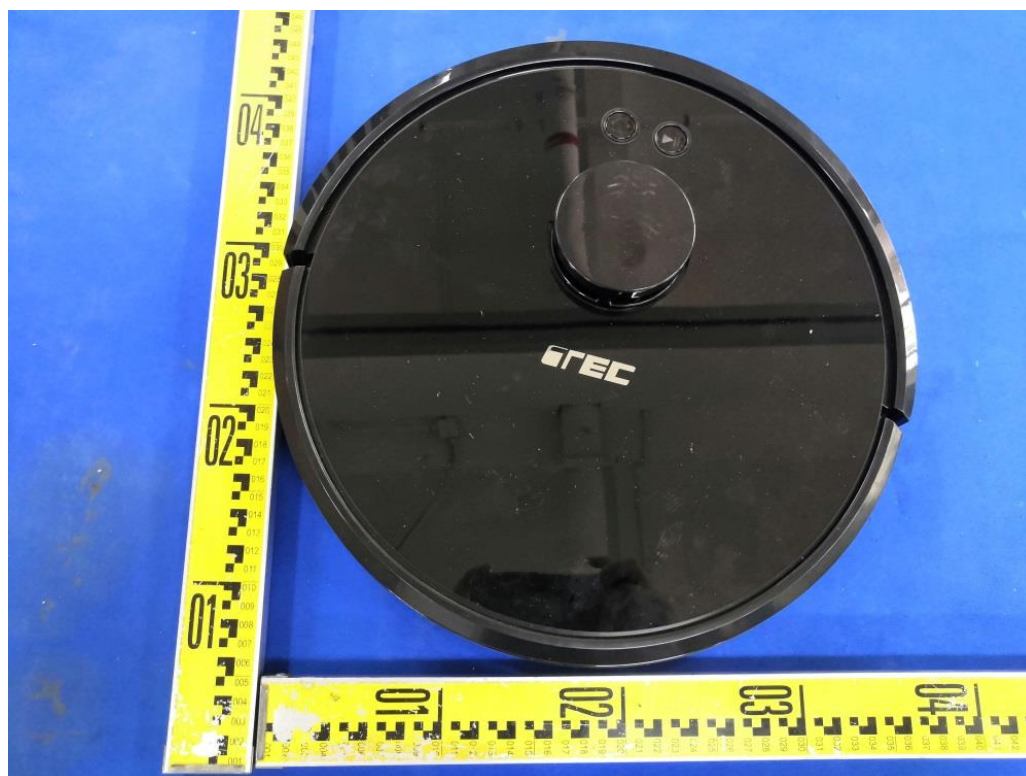


Fig. 2



Fig. 3



Fig. 4



Fig. 5

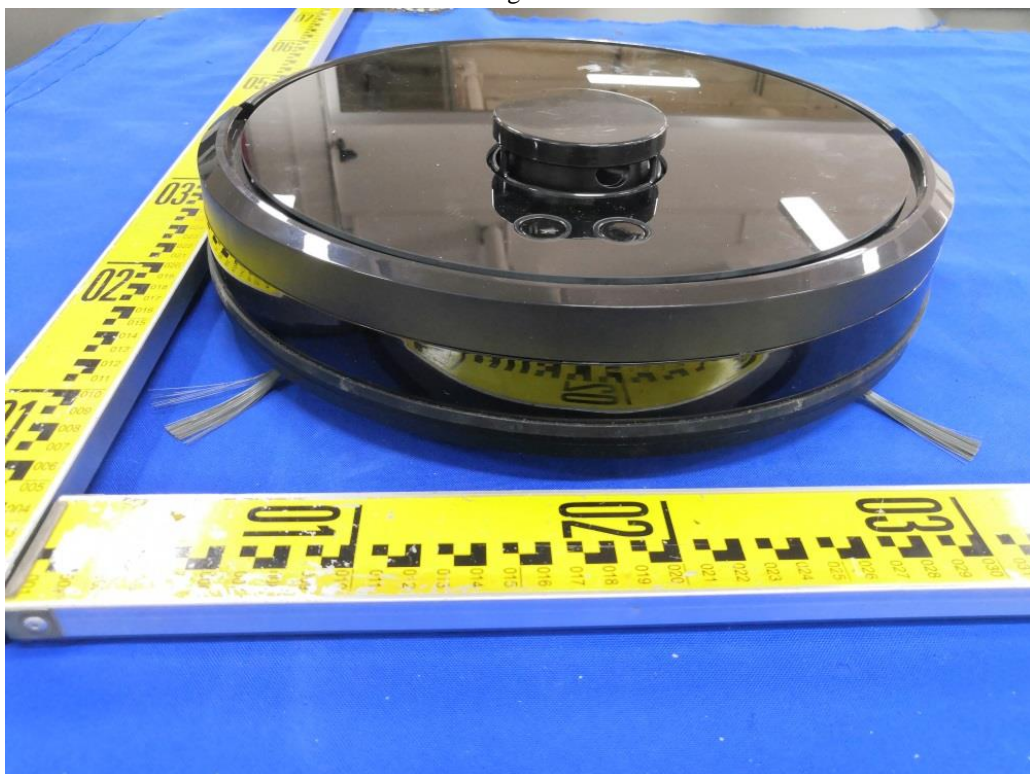


Fig. 6



Fig. 7

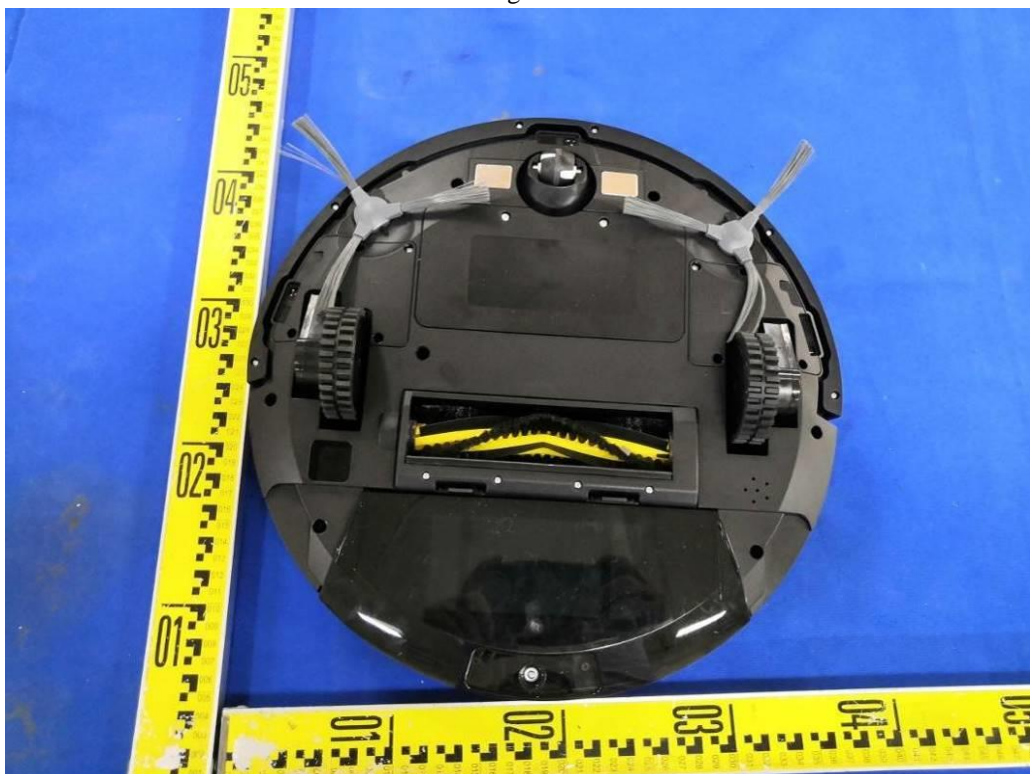


Fig. 8



Fig. 9



Fig. 8

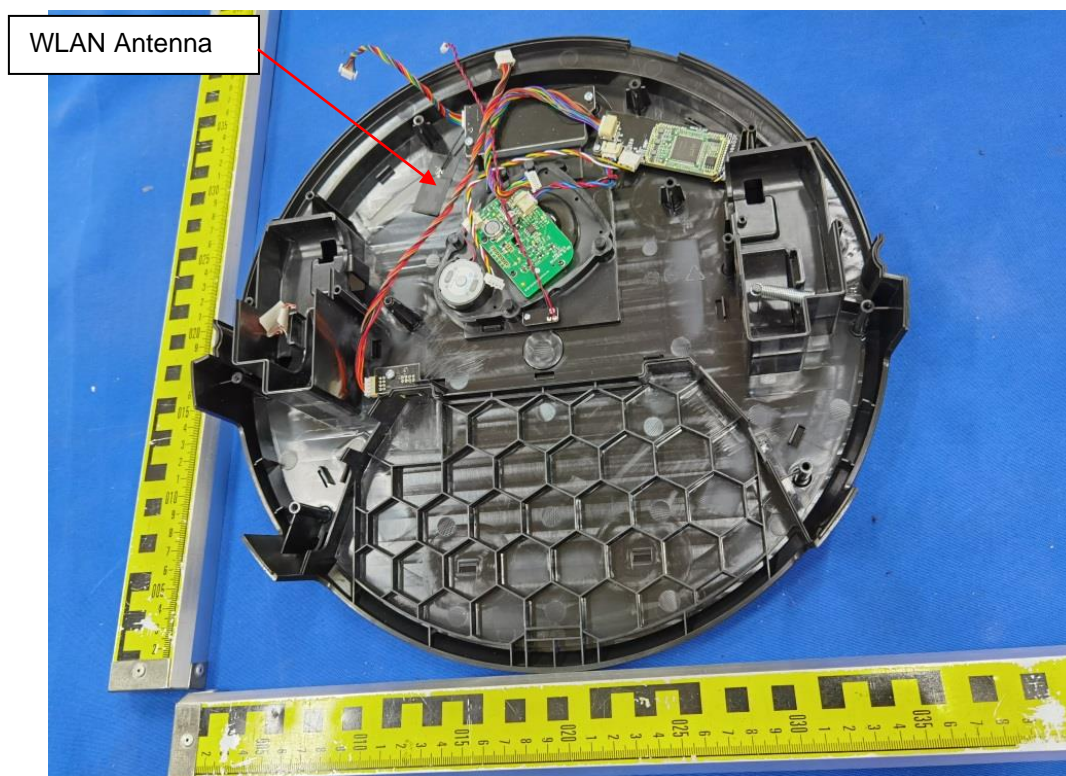


Fig. 9

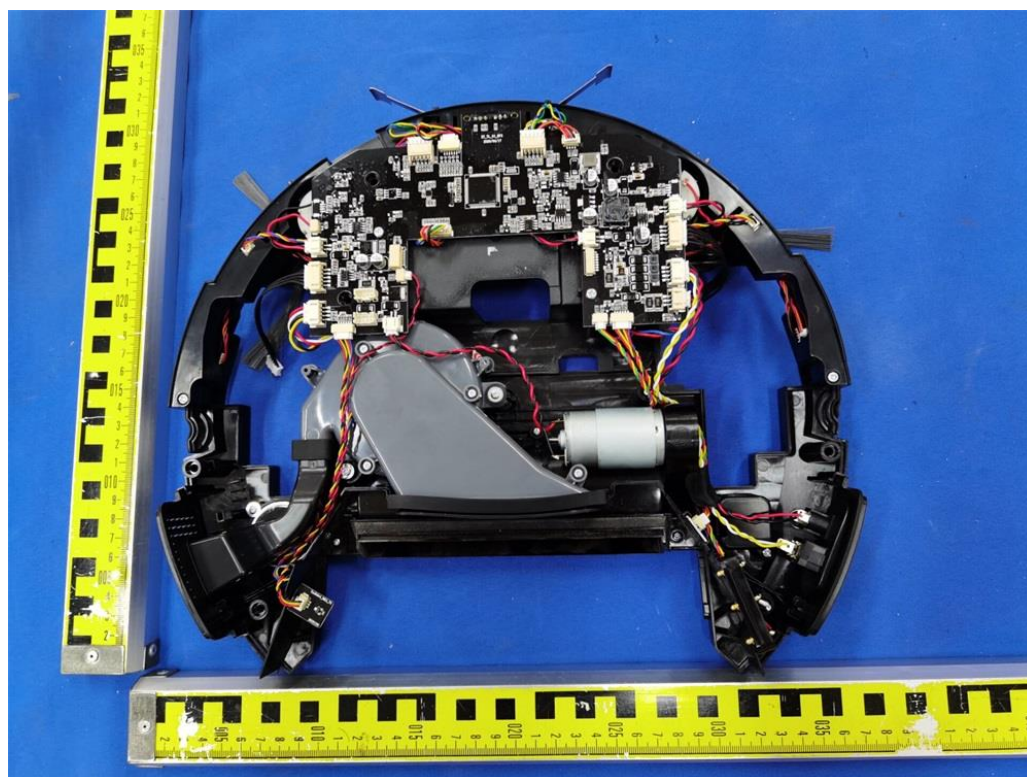


Fig. 10

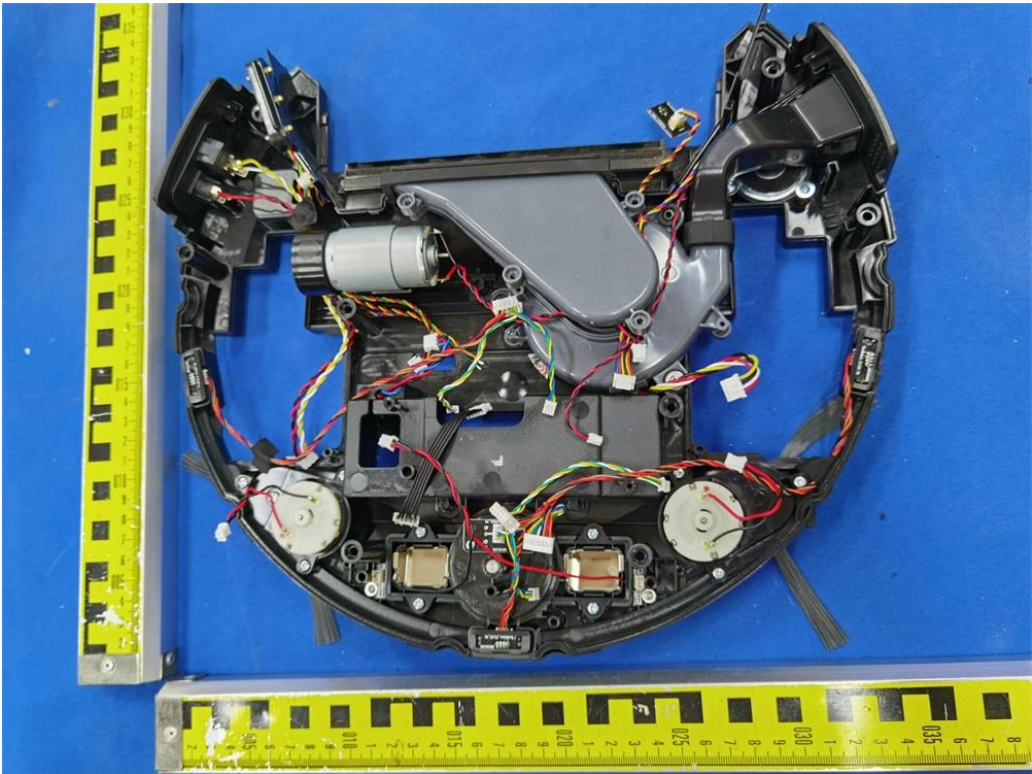


Fig. 11

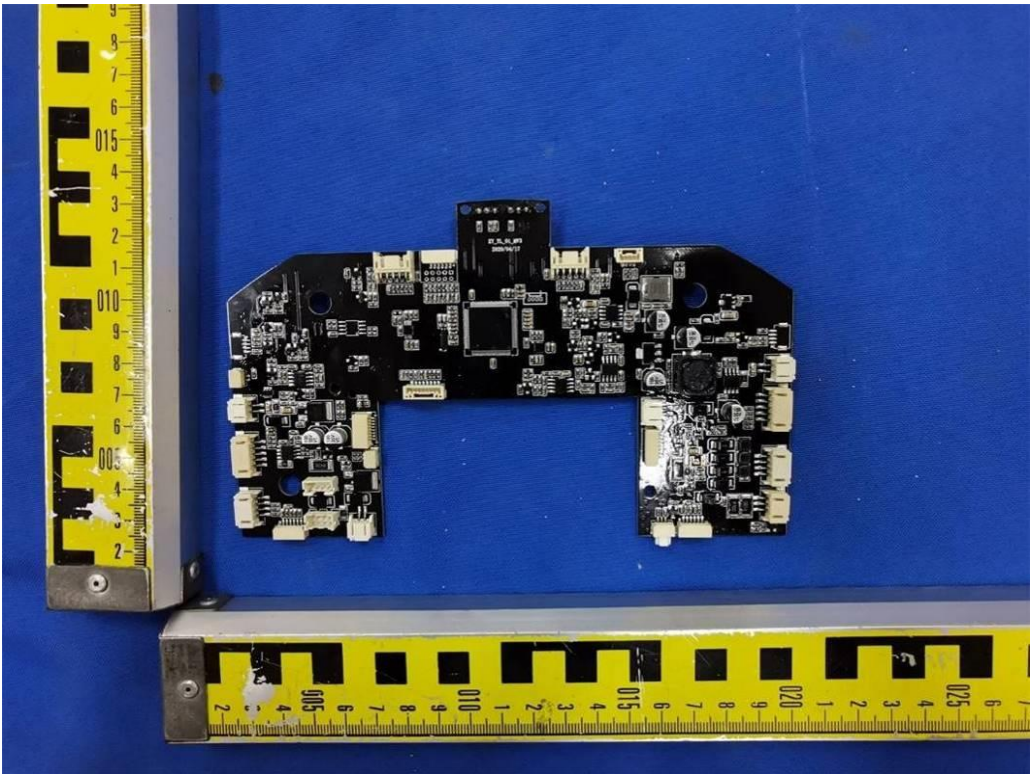


Fig. 12



Fig. 13

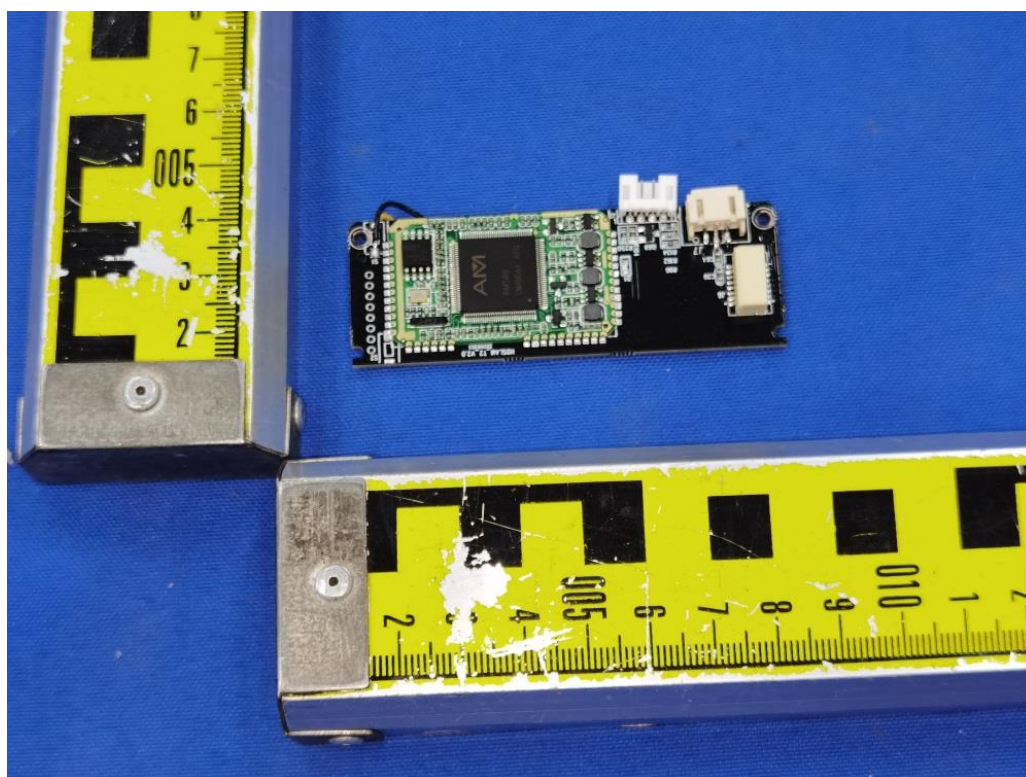


Fig. 14

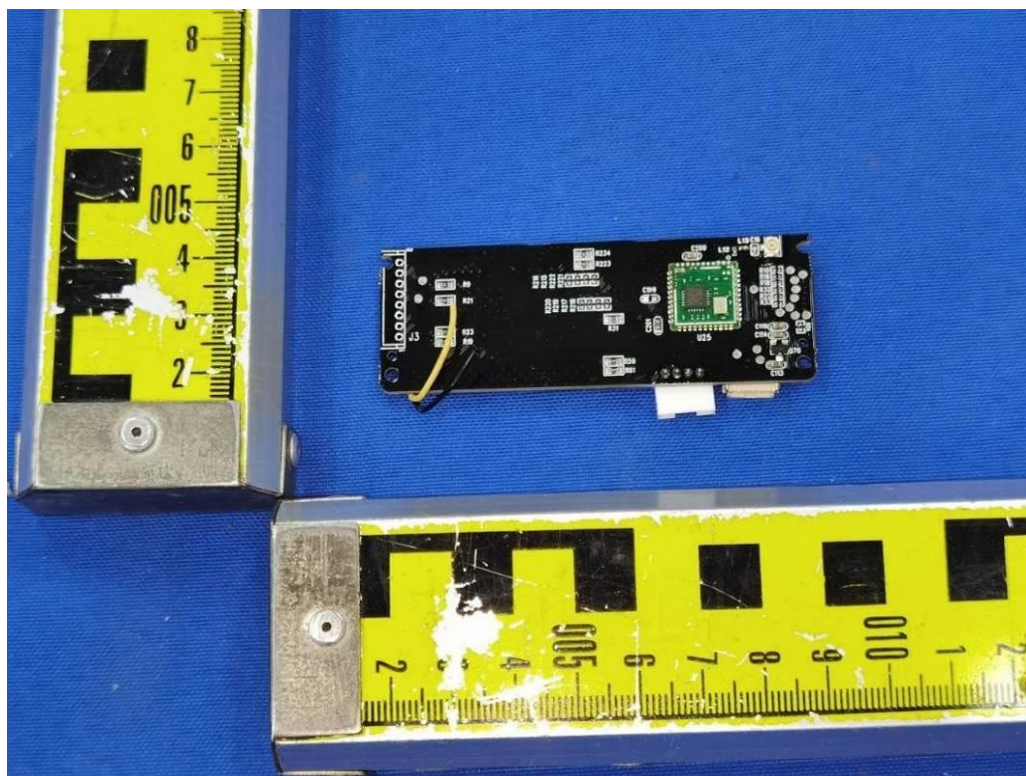


Fig. 15



Fig. 16

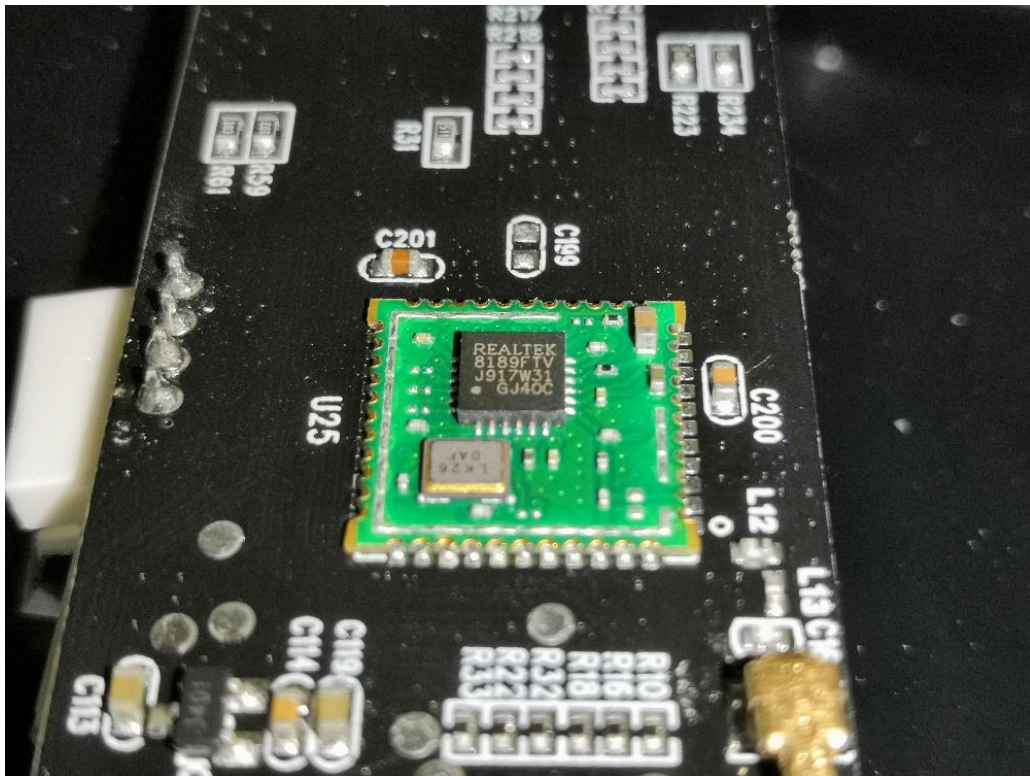


Fig. 17

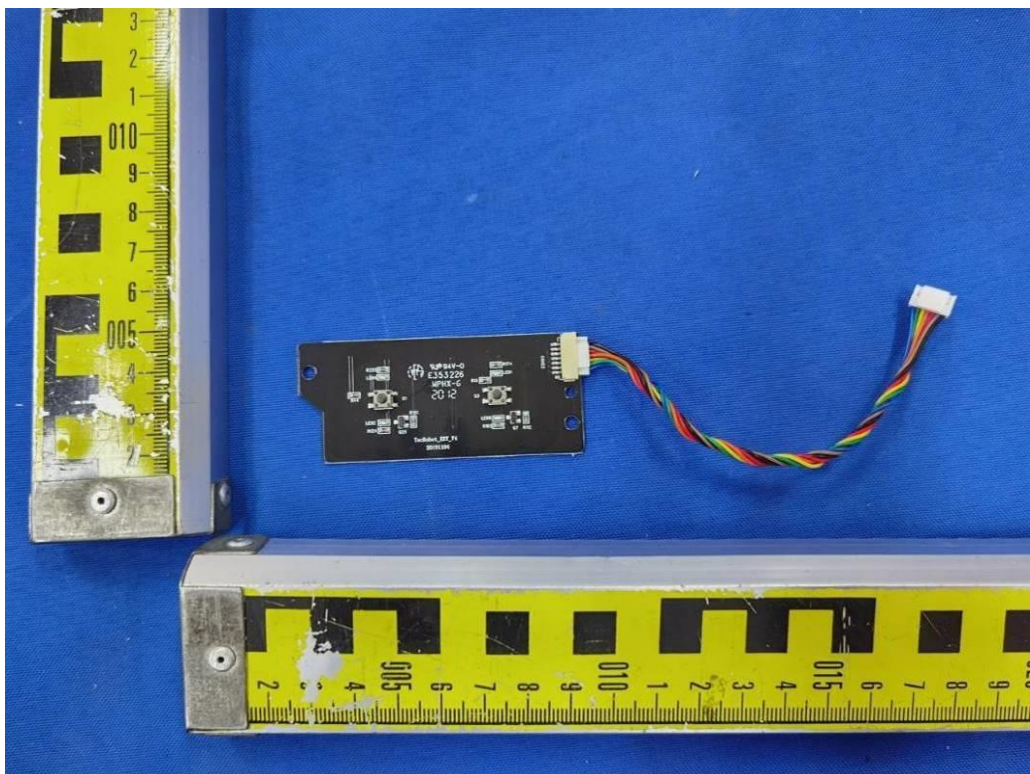


Fig. 18

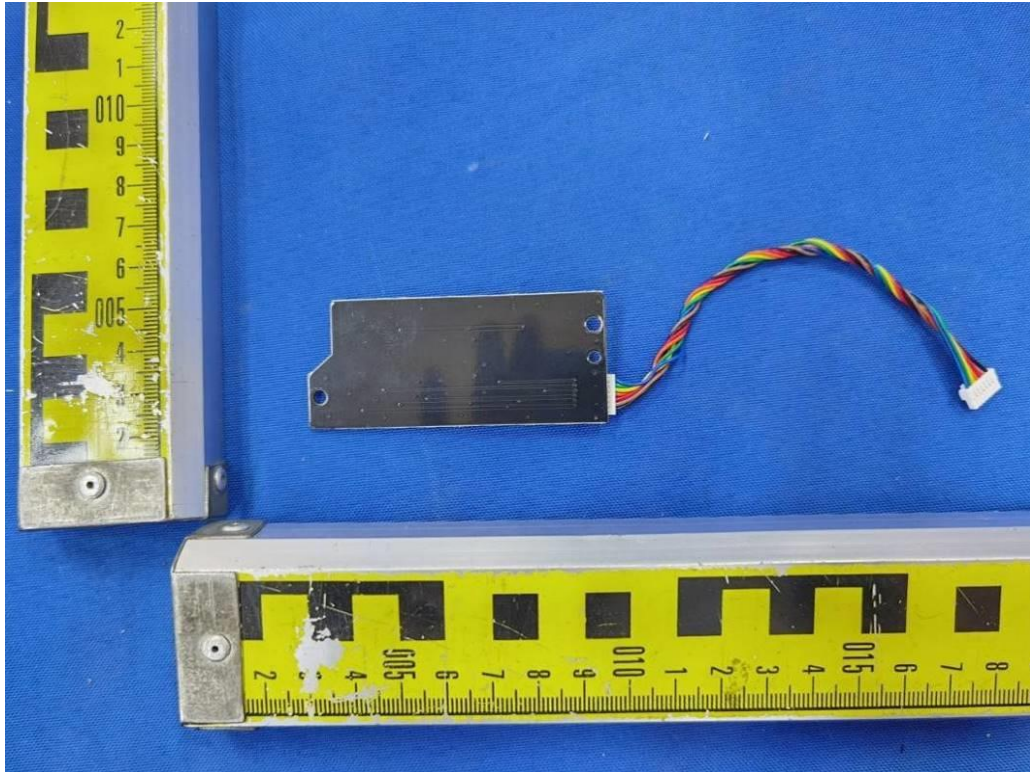


Fig. 19

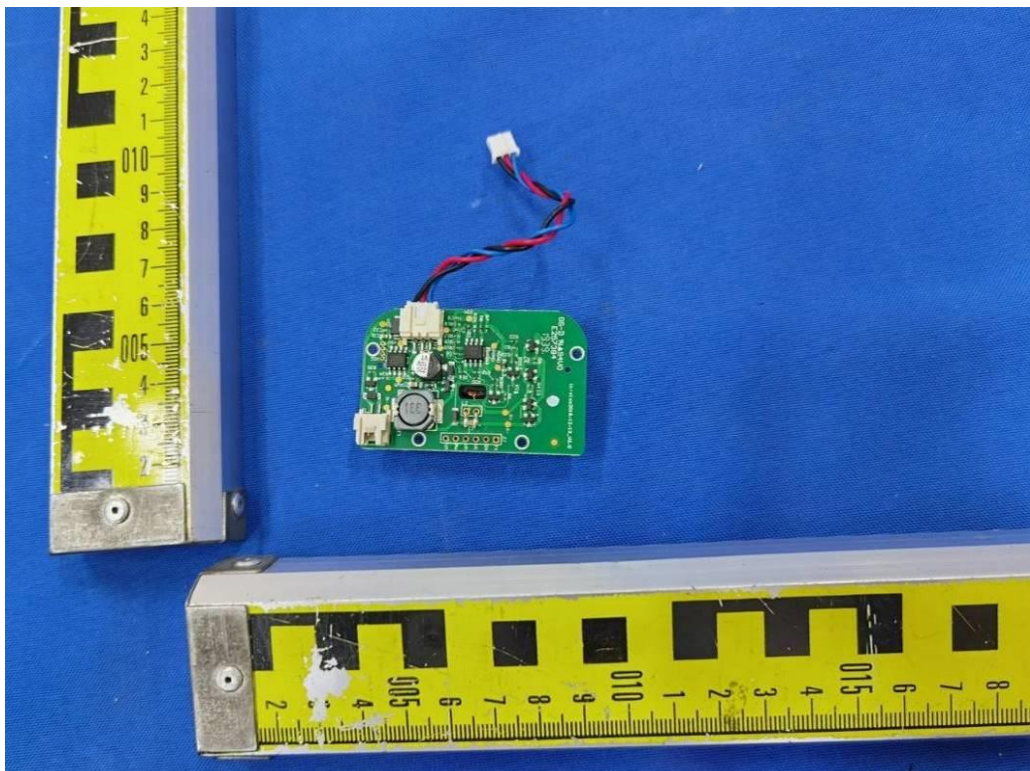


Fig. 20

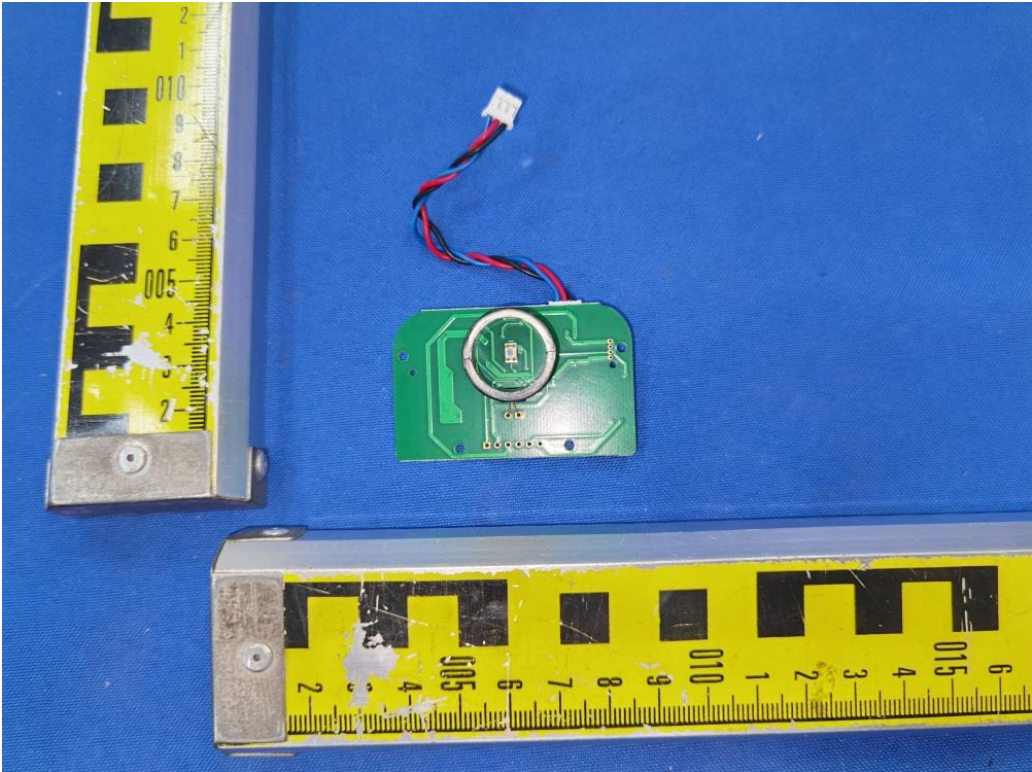


Fig. 21

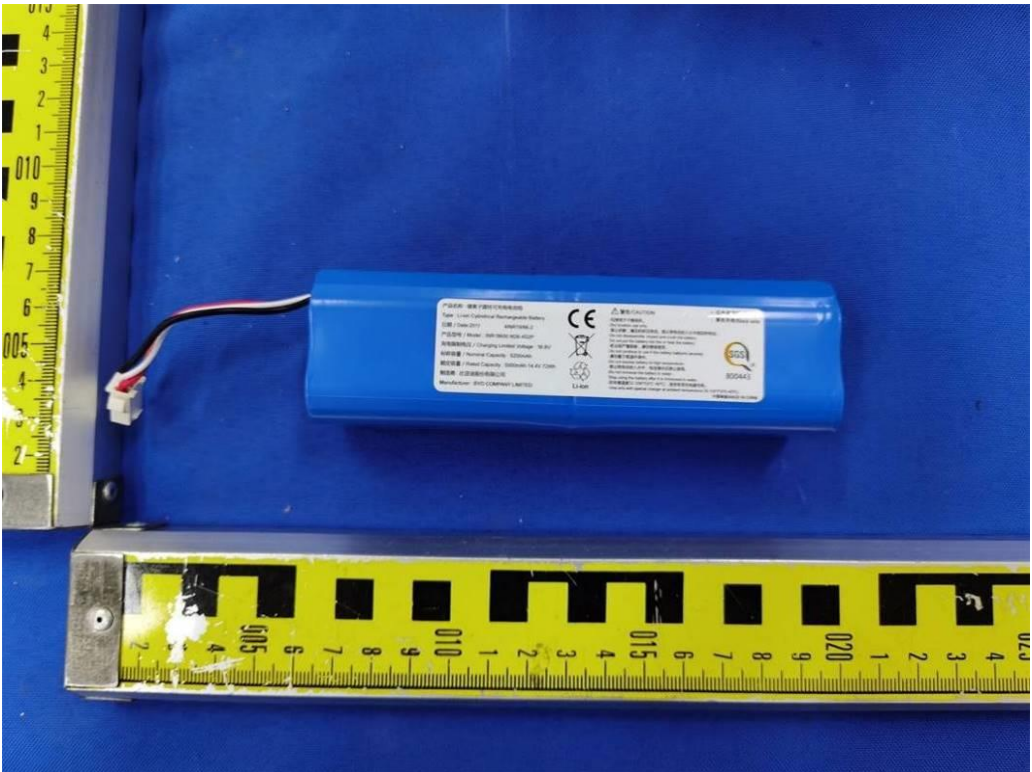


Fig. 22



Fig. 23

.....End of Report.....