

VEVOR[®]

TOUGH TOOLS, HALF PRICE

Technical Support and E-Warranty Certificate www.vevor.com/support

Thermal Imager Camera

MODEL:HT-W01

We continue to be committed to provide you tools with competitive price.

"Save Half", "Half Price" or any other similar expressions used by us only represents an estimate of savings you might benefit from buying certain tools with us compared to the major top brands and does not necessarily mean to cover all categories of tools offered by us.

You are kindly reminded to verify carefully when you are placing an order with us if you are actually saving half in comparison with the top major brands.

VEVOR[®]

Thermal Imager Camera

TOUGH TOOLS, HALF PRICE

MODEL:HT-W01



NEED HELP? CONTACT US!

Have product questions? Need technical support? Please feel free to contact us:

Technical Support and E-Warranty Certificate
www.vevor.com/support

This is the original instruction , please read all manual instructions carefully before operating . VEVOR reserves a clear interpretation of our user manual . The appearance of the product shall be subject to the product you received . Please forgive us that we won't inform you again if there are any technology or software updates on our product .

Content

1. Cautions	1
2. Product Summary	1
2.1 Application Scenes	1
2.2 Major Functions	2
3. Product Structures	3
3.1 Structure Introduction	3
3.2 Description of Indicators	3
4. Product Application	4
4.1 Equipment Power On	4
4.2 Equipment Power Off	4
4.3 Equipment Charging	4
4.4 Equipment Connection	4
5. Software Operation	6
5.1 Software Interface	6
5.2 Library, Photography and Video Recording	7
5.3 Shutter Refreshing	7
5.4 Temperature Measurement Analysis	8
5.5 Color Palette	10
5.6 Temperature Measurement Setting	12
5.7 Setting	12
6. Technical Parameters	13

1. Precautions

Please read all the following information before using your device to protect you and others from injury or damage to your device.

- (1) Do not expose the product in the sun and other high-intensity radiation sources
- (2) Do not touch or collide the detector window and lens with hands or other objects;
- (3) Do not touch the device and USB interface with wet hands;
- (4) Do not scrub your equipment with thinner;
- (5) Please pay attention to preventing static electricity;
- (6) Do not disassemble the equipment. If there is any fault, please contact our company for repair by professional personnel.

2. Product Summary

2.1 Application scenes

To use this mobile phone infrared thermal imager, you need to download and install the mobile phone infrared thermal imager “HT-W01 Wireless WIFI Mobile Thermal Imager” APP. Through this APP, you can achieve infrared observation and temperature measurement functions.



Scan QR code to download the App

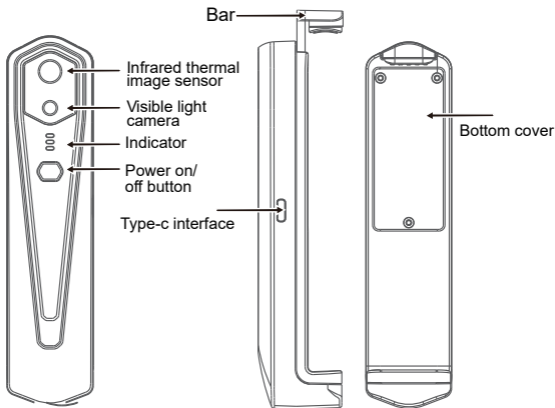
2.2 Major functions

The following functions are to be achieved:




- (1) Open the applied software for mobile phone infrared thermal imager to achieve infrared observation and measurement;
- (2) to perform infrared temperature measurement, and temperature analysis;
- (3) shooting and video recording;
- (4) motion control and parameter setting for your mobile phone infrared thermal imager.

3. Product structures

3.1 Structure introduction



3.2 Description of indicators

-  Status indicator: blue light
-  Power on indicator: green light
-  Charging indicator: red

4. Product application

4.1 Device power on

Long press the Power on/off button for 1 second, and the device is powered on. The power on indicator is normally on.

After the device is powered on for 15 seconds, you can search WIFI

4.2 Device power off

Long press the power on/off button for more than 2 seconds, and all indicators will be out.

Long press the power button for more than 6 seconds in the power on state to force power off, and all indicators will be out.

4.3 Device charging


Use TYPE-C interface data cords for charging. The charging indicator is normally on. After it is fully charged, the charging indicator is not on.

4.4 Device connection



Connecting WIFI

(1) Open your mobile phone WIFI connection screen, and find the WIFI name prefixed with HT-W01-;

(2) Enter WIFI password 12345678 and connect it;

(3) After WIFI connection becomes successful, go to the APP, and click on the “  ” button to start connecting the device.

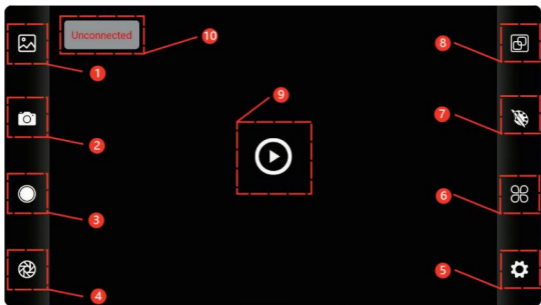
Play button: After it is clicked, it starts to play images, and you can perform related operations.

1. After WIFI connection is successful, and when the device is disconnected, click to connect the device;
2. After successful connection, “  ” and “  ” will disappear;

- **The device fails to connect your mobile phone, and the status indicator flashes in a low frequency (on for 1s, and out for 1s)**
- **After the device connects your mobile phone, the status indicator flashes in a high frequency (on for 0.5s, and out for 0.5s).**


5. Software operation

5.1 Software interface



①	Library button	⑥	Temperature setting button
②	Image capture button	⑦	Color palette allocation button
③	Video recording button	⑧	Temperature measurement button
④	Shutter refreshing button	⑨	Playback button
⑤	Setting button	⑩	Status of device failure to connect

5.2 Library, shooting and video recording

(1) “  ” library: Click to view images and videos;

Enter the image list page

- Long press the image or click on the icon in the right upper corner to be able to delete image files;
- Click on the image to preview single images, and you can preview the previous/last image by sliding left/right;
- When you preview single images, open/close your two fingers to zoom in/out image contents, and long press it to be able to view detailed information on the images;

Enter the video list page

- Long press the image or click on the icon in the right upper corner to be able to delete video files;
- Click on videos to play such video file;




(2) “  ” shooting: to save the current screen;


Photo saving position: to open the images you require in the library, and you can view the location of the image.

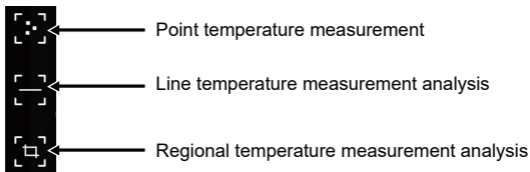
(4) “  ” video recording: Click on it to start video recording, and click on it once again to end video recording; The position for saving video recording is the same as that of an image.

5.3 Shutter refreshing image.

“  ” shutter refreshing: Click on to refresh the baffle.

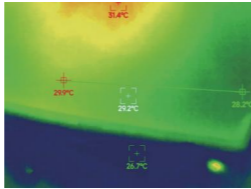
5.4 Temperature Measurement Analysis

Click “” to pop out option of temperature measurement.



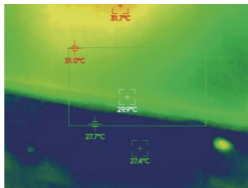
(1) Point temperature measurement: click the point temperature measurement button, and the screen will display the temperature information of three points, namely the central temperature point, the highest temperature point and the lowest temperature point. Click the screen at this time, and the temperature information of the user-defined point will be added.

(2) Line temperature measurement analysis: drag with your fingers and draw a horizontal line on the screen. It will automatically analyze the maximum temperature and minimum temperature of the horizontal line, and identify relevant information.




Line temperature measurement analysis

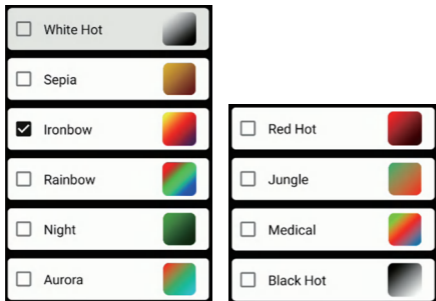
(3) Regional temperature measurement analysis: drag with your fingers and draw a rectangle on the screen. it will automatically analyze the maximum temperature and minimum temperature in the rectangular area, and identify relevant information, as shown in the following figure:



Regional temperature measurement analysis

5.5 Color palettes

Click on “  ” to pop up the color palette interface. You can switch among 10 color palettes such as white heat, glowing gold, iron red, rainbow, shimmer, aurora, red heat, jungle, medical, and black heat, as shown in the figure below.



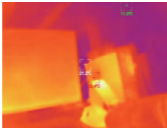
The display effects of 10 color palettes is shown as follows:



White hot



Sepia



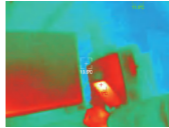
Ironbow



Rainbow



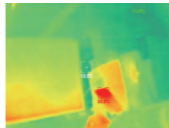
Night



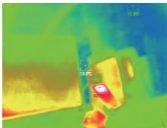
Aurora



Red hot



Jungle




Medical




Black hot

5.6 Temperature measurement setting

Click on “” to pop up the setting interface. You can set temperature unit, temperature measurement range, emissivity, temperature measurement distance, brightness, contrast, fusion, picture in picture, overlap, time-domain noise reduction, spatial noise reduction, and detail enhancement, or reset all parameters, as shown in the figure below:

Temperature unit	Emissivity E=0.95 >	PIP 0.5 <input type="checkbox"/>
<input checked="" type="radio"/> Celsius(°C) <input type="radio"/> Fahrenheit(°F)	Distance D=0.25m >	Overlap >
Measuring range	Image control	Noise reduction NR=2 >
<input checked="" type="radio"/> Large range(120°C~550°C) <input type="radio"/> Small range(-20°C~120°C)	Brightness B=128 >	Detail enhancement DE=1 >
Thermal control	Contrast C=128 >	RESET
	Fusion ratio 0.7 >	

5.7 Setting

Click on “” to pop up the setting interface for language selection. For languages, Chinese or English can be selected, as shown in the figure below.

Language
<input type="checkbox"/> Chinese
<input checked="" type="checkbox"/> English
Version >

6. Technical parameters

Model	HT-W01
Infrared	
Detector type	Vanadium Oxide Uncooled Infrared Focal Plane
Infrared image resolution	256×192
Pixel spacing	12μm
Focal length	3.2mm
Angle of view	56°(H)×42°(V)
IFOV	3.75mrad
Working band	8~14μm
NETD	≤ 50mk@25°C,@F/1.0
Image frame rate	≤25Hz
Focusing mode	Free Focus
Display	
Brightness adjustment	Supported
Contrast adjustment	Supported
Image fusion degree	Supported
Picture in pictures	Supported
Pseudo color mode	White hot, sepia, Ironbow, rainbow, night, aurora, red hot, jungle, medical, and black hot
Hot spot tracking	Supported

Temperature measurement function	
Temperature measurement mode	point, line and regional temperature measurement
Temperature measurement range	-20°C~120°C, 120°C~ 550°C
Temperature measuring distance	0.25m~30m
Temperature measurement accuracy	300°C-550°C:±4% -15°C-300°C:±2°C or ±2% -20°C-15°C:±4°C
System function	
Camera/video	Supported
Picture /Video format	JPG/MP4
Language	Chinese and English
Overall power consumption	≤1.5W
Endurance time	≥2H
External interface	USB Type-C, DC5V power supply
WIFI	Supported
Protection level	IP54
Power supply	1000mAh chargeable lithium battery
Working/storage environments	
Working temperature	-10 ℃ ~ +50 ℃
Storage temperature	-20 ℃ ~ +70 ℃
Size/Weight	
Product size	152x35x35mm
Product weight	210g

CORRECT DISPOSAL



This product is subject to the provision of European Directive 2012/19/EU.

The symbol showing a wheeled bin crossed through indicates that the product requires separate refuse

collection in the European Union.

This applies to the product and all accessories marked with this symbol. Products marked as such may not be discarded with normal domestic waste, but must be taken to a collection point for recycling electrical and electronic devices.

FCC Information:

CAUTION: Changes or modifications not expressly approved by the party responsible for compliance could void the user's authority to operate the equipment!

This device complies with Part 15 of the FCC Rules. Operation is subject to the following two conditions:

- 1) This product may cause harmful interference.
- 2) This product must accept any interference received, including interference that may cause undesired operation.

WARNING: Changes or modifications to this product not expressly approved by the party

responsible for compliance could void the user's authority to operate the product.

Note: This product has been tested and found to comply with the limits for a Class B digital device pursuant to Part 15 of the FCC Rules. These limits are designed to provide reasonable protection against harmful interference in a residential installation.

This product generates, uses and can radiate radio frequency energy, and if not installed and used in accordance with the instructions, may cause harmful interference to radio communications. However, there is no guarantee that interference will not occur in a particular installation. If this product does cause harmful interference to radio or television reception, which can be determined by turning the product off and on, the user is encouraged to try to correct the interference by one or more of the following measures.

- Reorient or relocate the receiving antenna.
- Increase the distance between the product and receiver.
- Connect the product to an outlet on a circuit different from that to which the receiver is connected.
- Consult the dealer or an experienced radio/TV technician for assistance.

Imported to USA: Sanven Technology Ltd., Suite 250, 9166 Anaheim Place, Rancho Cucamonga, CA 91730

Manufacturer: Shanghaimuxinmuyeyouxiangongsi

Address: Baoshanqu Shuangchenglu 803long 11hao 1602A-1609 shi Shanghai



Pooledas Group Ltd
Unit 5 Albert Edward House, The
Pavilions Preston, United Kingdom
pooledas123@gmail.com
01772418127



SHUNSHUN GmbH
Römeräcker 9 Z2021,76351
Linkenheim-Hochstetten,
Germany euvertreter@gmail.com
+49 1727041930

Made In China

说明书印刷要求

尺寸：90x115mm

四色印刷 128g 双铜 骑马订