

WIFI Antenna MAIN (P4006)

1. Explanation of Product number :

S L K - A P D - P 4 0 0 6 - L - 3 0 0 I V - B

1 2 3 4 5



Product Code:

(1) Customer:

APD:艾普达

(2) Project:

P4006: SLK-APD-P4006(WIFI antenna 2.4~2.5GHz 5~5.85GHz)

(3) Welding Position

L:Left

(4) Cable Length:

300IV:300*0.81MM

(5)Cable Color

B: Black

2. Features

*Stable and reliable in performances

*Compact size

*RoHS compliance

3. Applications

* IEEE802.11 (a/b/g/n)

* Hand-held devices when WIFI (802.11a/b/g/n) functions are needed

4. Description

Holy bond's External antenna series are specially designed for WIFI (802.11 a/b/g/n) applications. Based on Holy bond's proprietary design and processes, this External antenna has excellent stability and sensitivity to consistently provide high signal reception efficiency.

5. Electrical Specifications

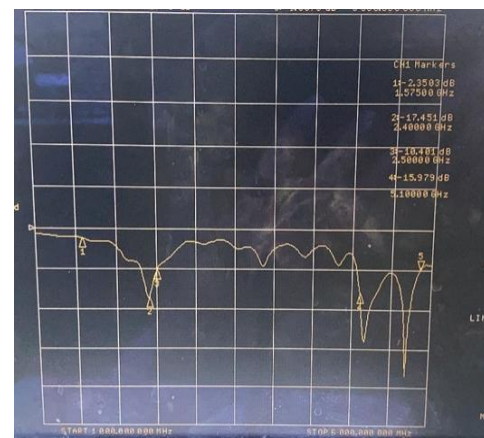
5-1

Characteristics	Specifications	Unit
Outline Dimensions	39.97*5.89*0.12	mm
Bandwidth(under-10dB return loss)	130min	MHz
VSWR	3max	
Impedance	50	Ω
Polarization	Linear Polarization	

5-2

VSWR

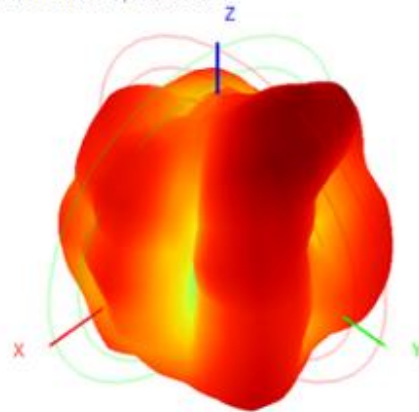
S11



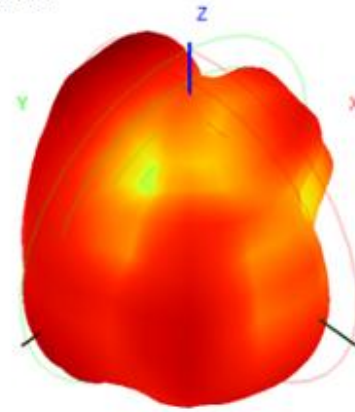
5-3.WIFI Antenna Gain/Efficiency/Radiation Pattern of 3D

Frequency	Efficiency	Gain (dBi)	Efficiency (%)
2400.0	-6.10	-0.25	24.54
2410.0	-5.98	-0.46	25.24
2420.0	-5.74	-0.76	26.68
2430.0	-5.47	-0.40	28.38
2440.0	-5.30	-0.08	29.49
2450.0	-5.24	0.13	29.91
2460.0	-5.18	0.24	30.36
2470.0	-5.17	0.35	30.44
2480.0	-5.37	0.44	29.04
2490.0	-5.76	0.56	26.55
2500.0	-6.03	0.61	24.94
5150.0	-4.65	2.47	34.30
5350.0	-4.22	3.53	37.86
5550.0	-4.66	2.88	34.21
5650.0	-4.81	2.99	33.06
5850.0	-5.47	2.09	28.36

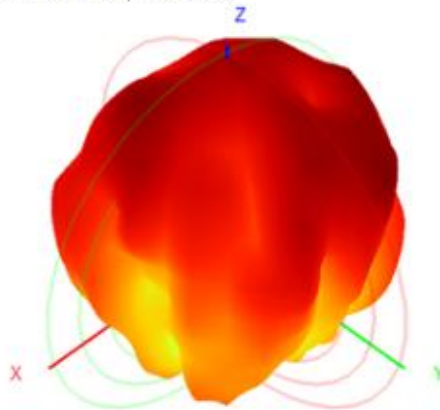
2450.0MHz H+V, Eff: 29.9%



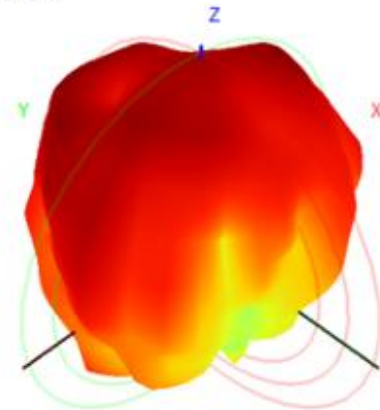
Back View



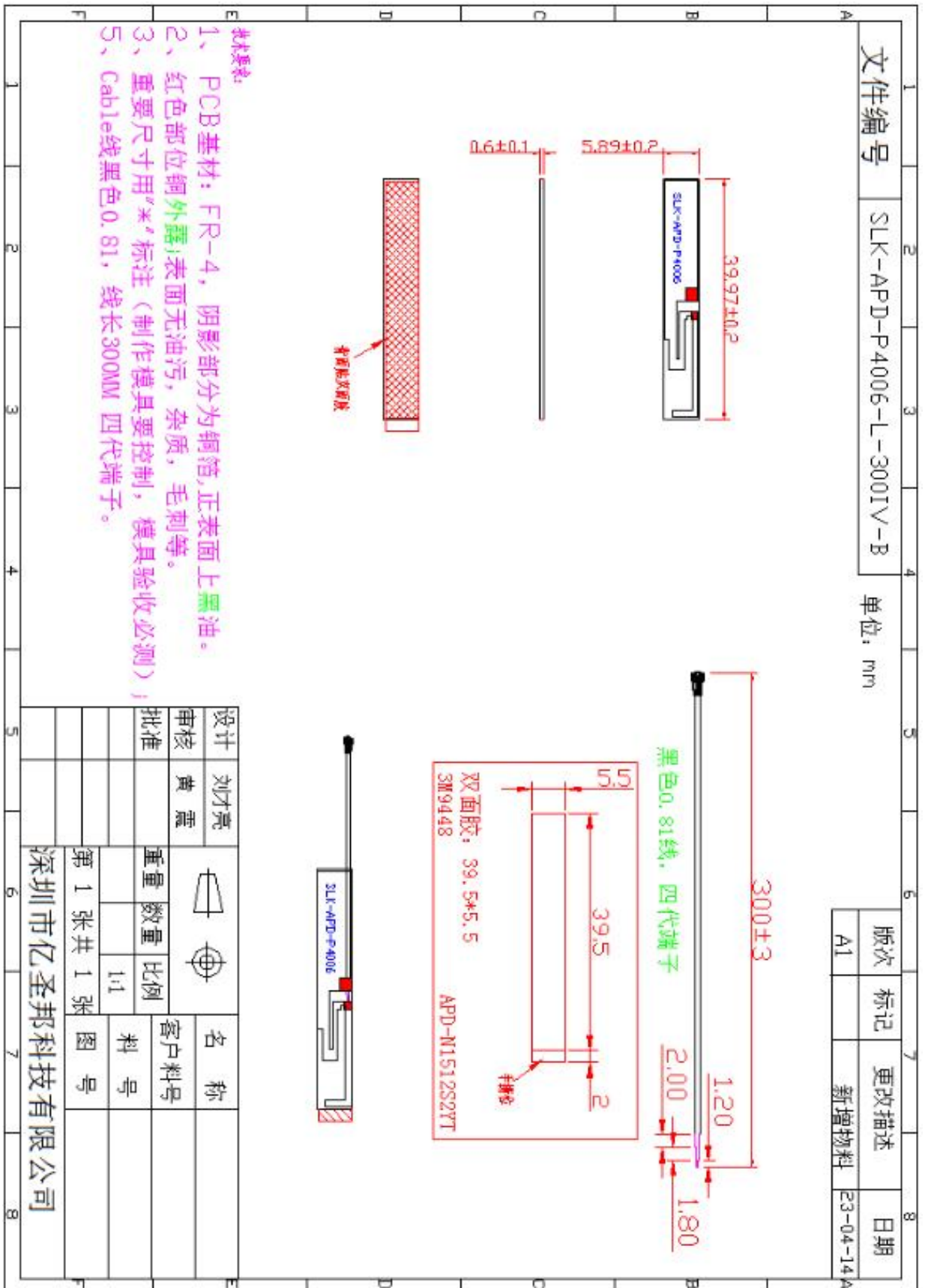
5850.0MHz H+V, Eff: 28.36%



Back View



6. Antenna Dimensions (unit: mm)

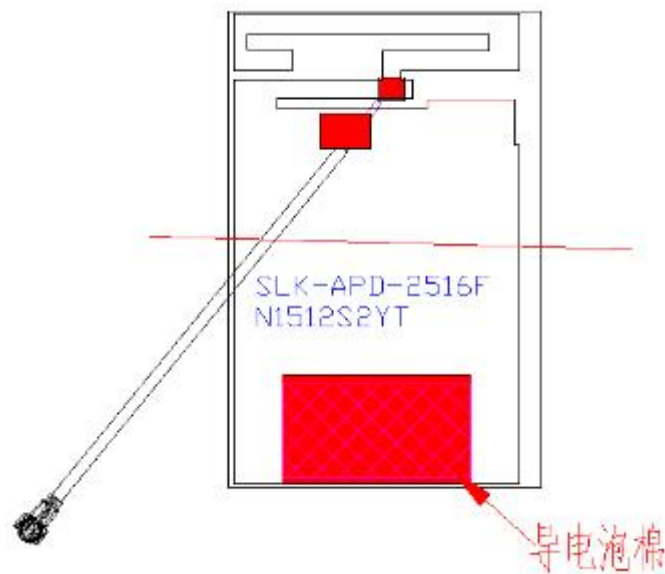


WIFI AUX Antenna (2516F)

1. Explanation of Product number :

S L K - A P D - 2 5 1 6 F - L - 2 0 0 I V - G

1 2 3 4 5



Product Code:

(1) Customer:

APD: 艾普达

(2) Project:

2516F: SLK-APD-2516F(WIFI/BT antenna 2.4~2.5GHz 5~5.85GHz)

(3) Welding Position

L:Left

(4) Cable Length:

200IV:200*0.81MM

(5)Cable Color

G: Grey

2. Features

*Stable and reliable in performances

*Compact size

*RoHS compliance

3. Applications

- * IEEE802.11 (a/b/g/n)
- * Hand-held devices when WIFI/BT (802.11a/b/g/n) functions are needed

4. Description

Holy bond's External antenna series are specially designed for WIFI/BT (802.11 a/b/g/n) applications. Based on Holy bond's proprietary design and processes, this External antenna has excellent stability and sensitivity to consistently provide high signal reception efficiency.

5. Electrical Specifications

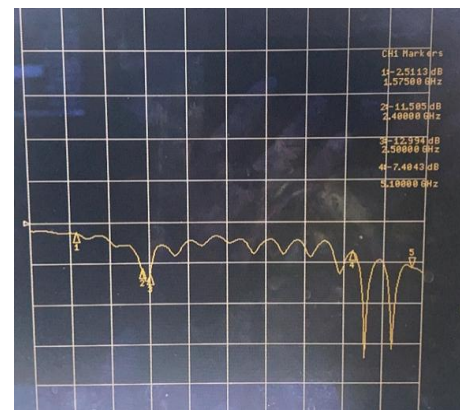
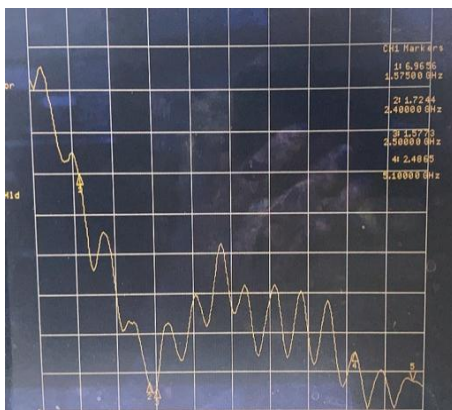
5-1

Characteristics	Specifications	Unit
Outline Dimensions	16.71*25.4*0.12	mm
Bandwidth(under-10dB return loss)	130min	MHz
VSWR	3max	
Impedance	50	Ω
Polarization	Linear Polarization	

5-2

VSWR

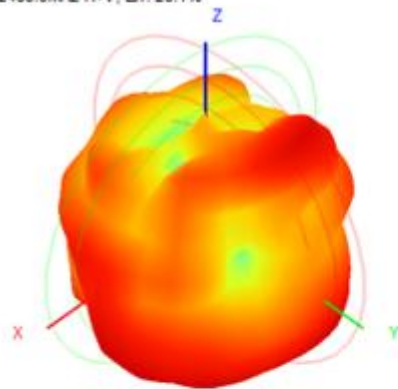
S11



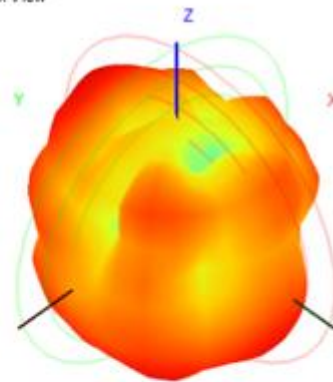
5-3.WIFI /BT Antenna Gain/Efficiency/Radiation Pattern of 3D

Frequency	Efficiency (dB)	Gain (dBi)	Efficiency (%)
2400.0	-6.35	0.65	23.20
2410.0	-6.53	0.56	22.21
2420.0	-6.74	0.30	21.19
2430.0	-6.88	0.40	20.49
2440.0	-6.94	0.23	20.24
2450.0	-6.96	0.01	20.14
2460.0	-7.00	-0.15	19.96
2470.0	-7.05	-0.11	19.73
2480.0	-7.16	-0.54	19.21
2490.0	-7.27	-0.84	18.75
2500.0	-7.34	-1.12	18.45
5150.0	-7.27	-1.11	18.73
5350.0	-4.15	1.57	38.42
5550.0	-4.90	0.71	32.38
5650.0	-4.74	0.71	33.59
5850.0	-5.84	-0.68	26.09

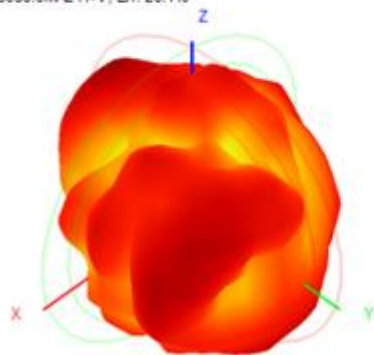
2450.0MHz H+V, Eff: 20.1%



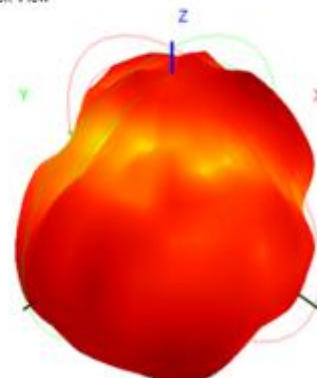
Back View



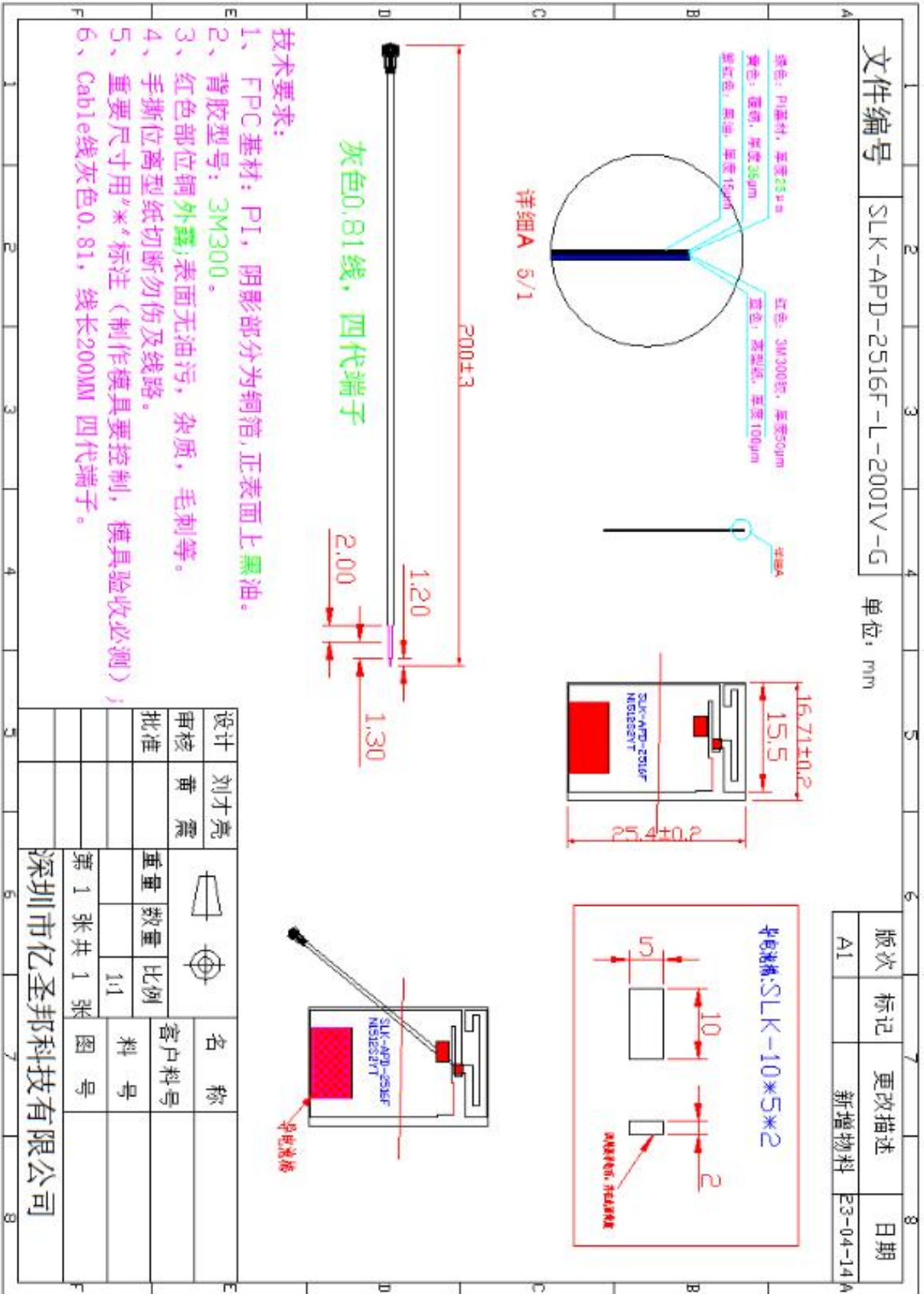
5850.0MHz H+V, Eff: 26.1%



Back View



6. Antenna Dimensions (unit: mm)



7. Antenna Picture



WIFI MAIN



WIFI AUX