

StormQuant Radar Internal Photos

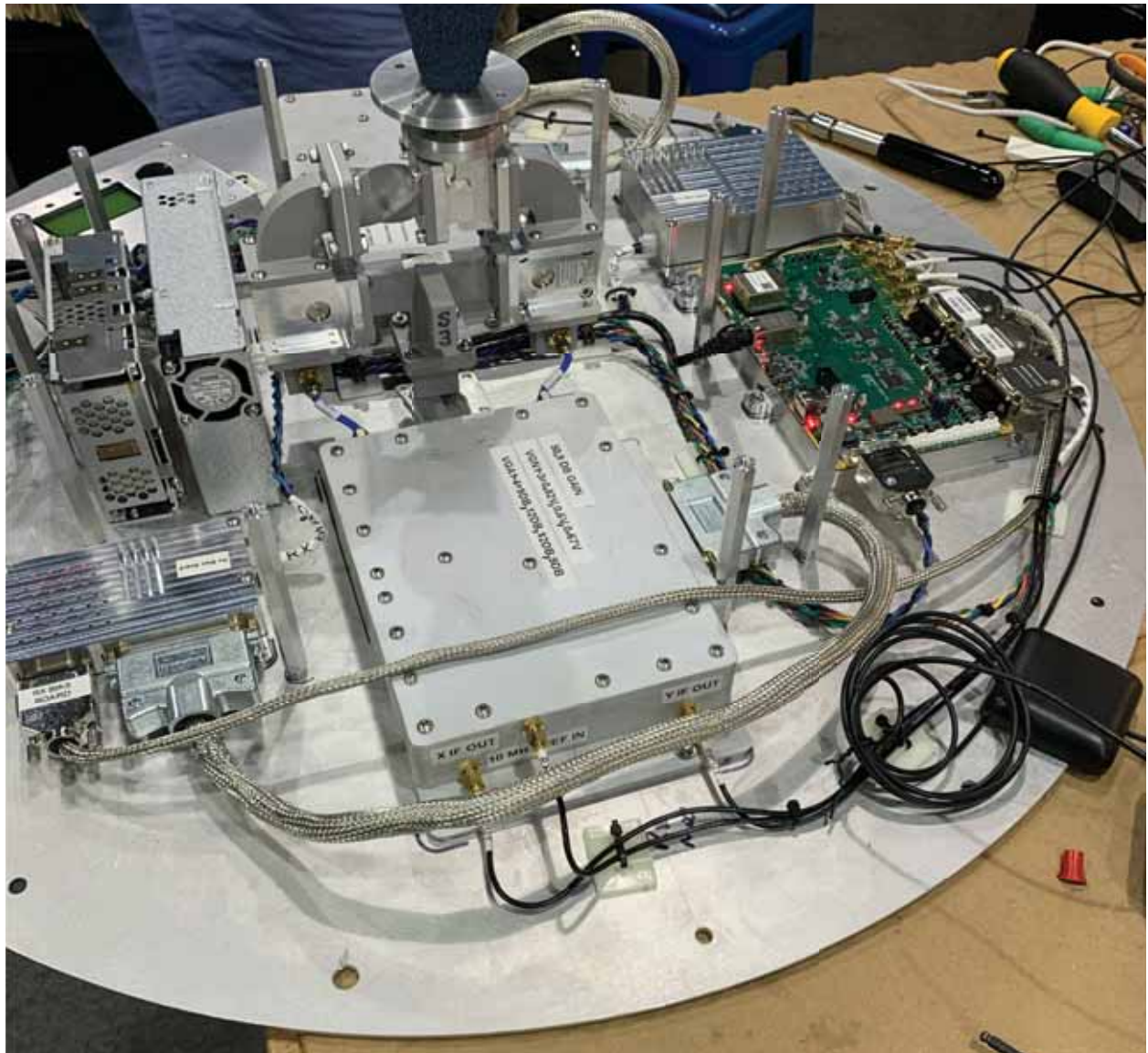
Radar Dish, Cone and Splash Plate

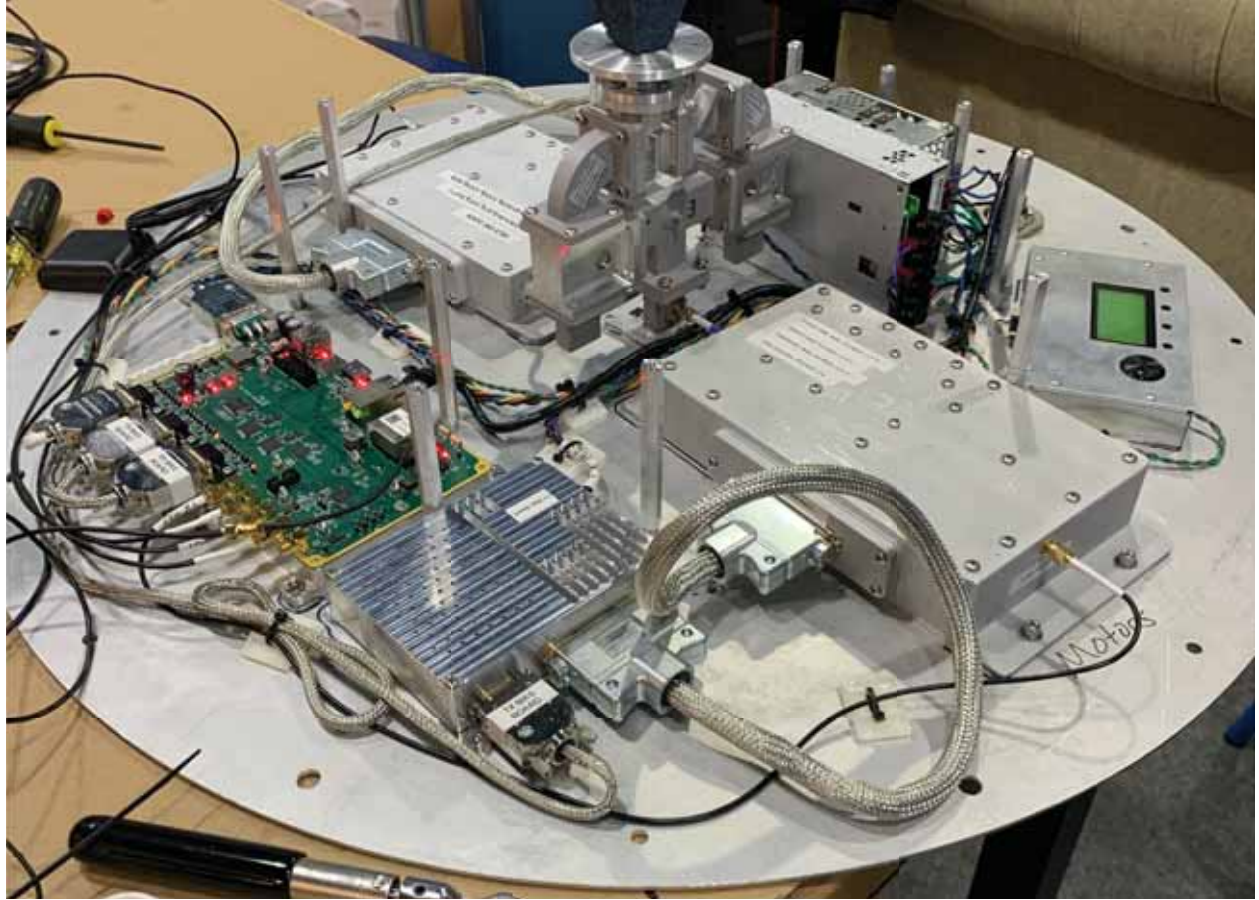


Radar Cake Layer and Positioner

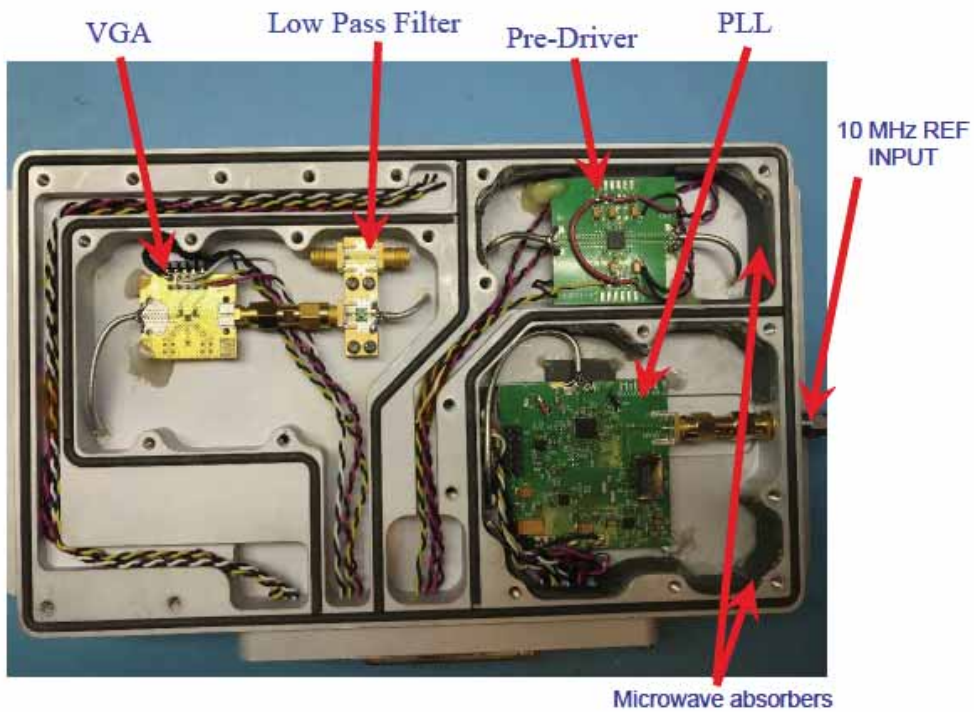
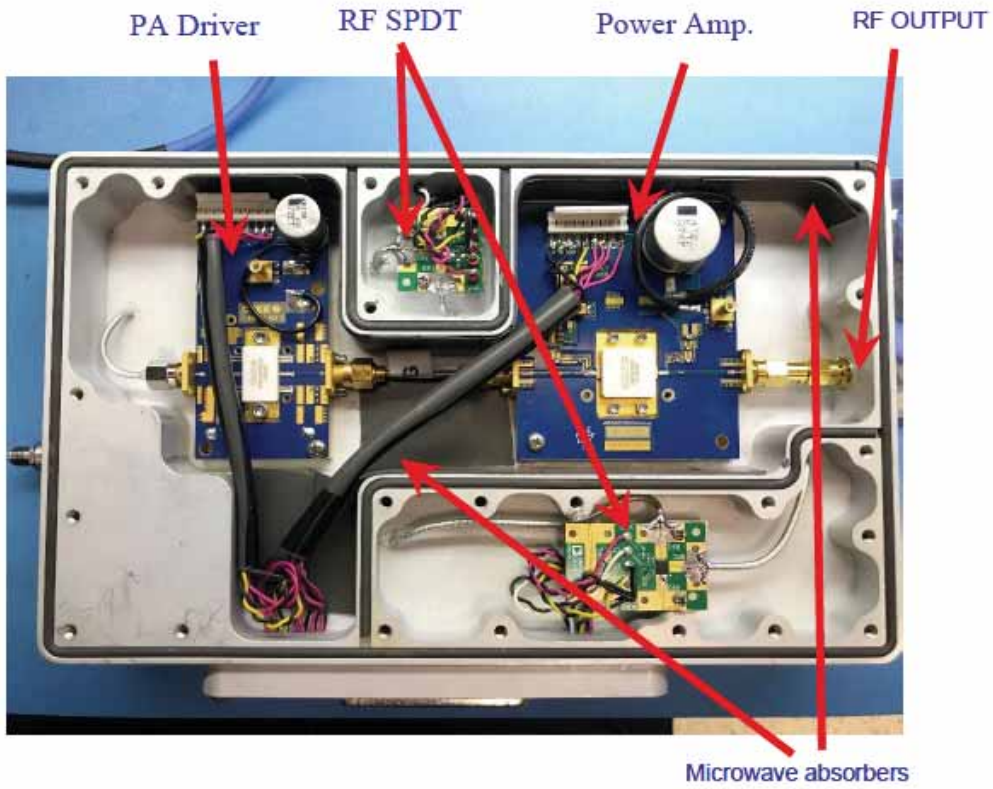


Base Layer – Waveguide, Transmit module, Receive module, BIAS boards, DAQ board, power supplier, & positioner controller





Transmit Module





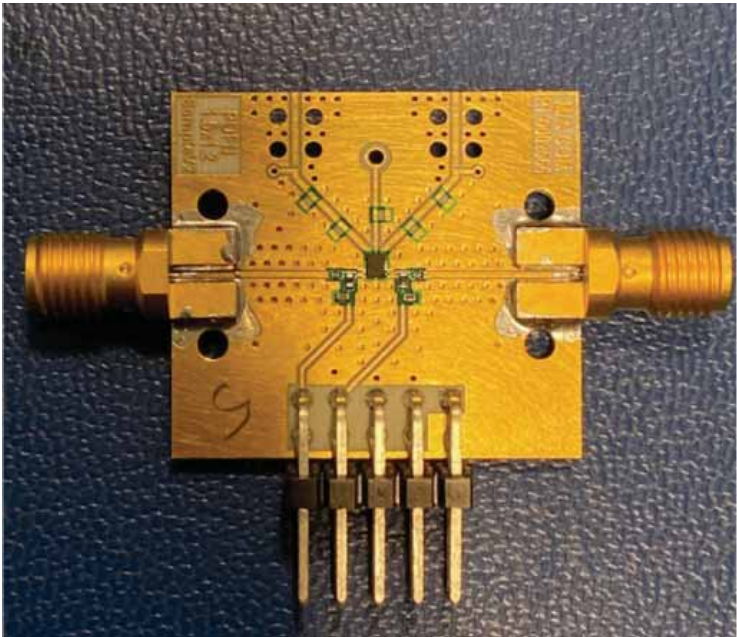
Switch: ADRF5020, Frontside



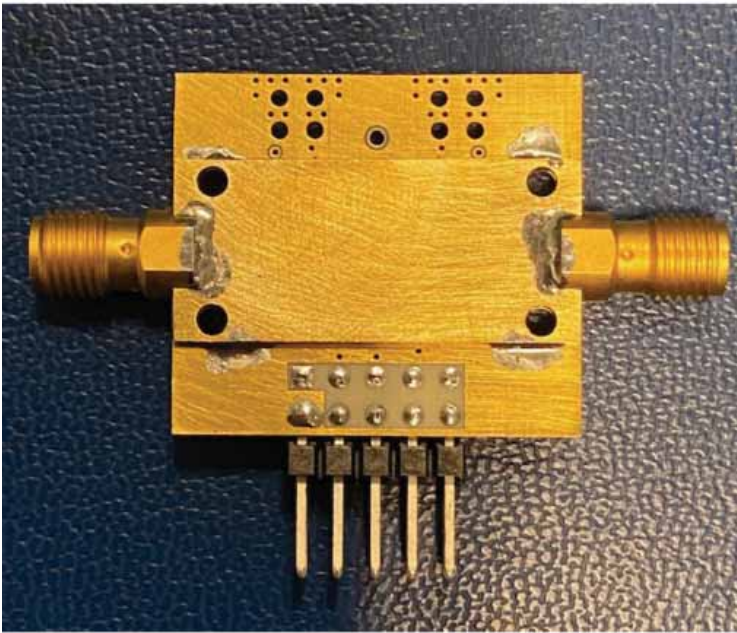
Switch: ADRF5020, Backside



VGA: MAAM-011100-001SMB, Frontside



VGA: MAAM-011100-001SMB, Backside



LPF: TB-LFCW-1062+, Frontside



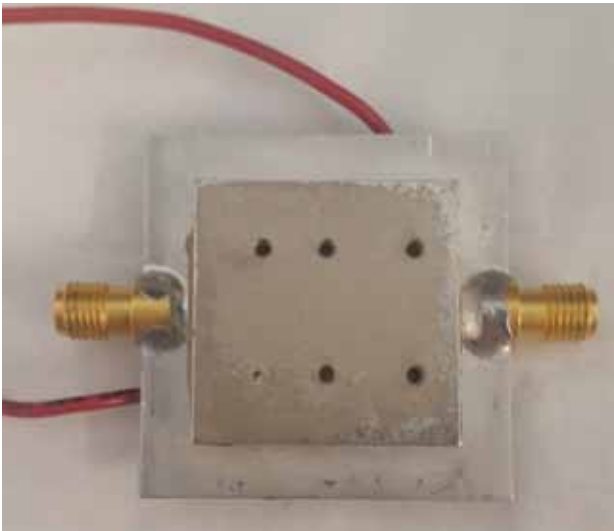
LPF: TB-LFCW-1062+, Backside



PreDriver: HMC591LPS, Frontside



RedDriver: HMC591LPS, Backside



Driver: CMPA801B025F-AMP, Frontside



Driver: CMPA801B025F-AMP, Backside



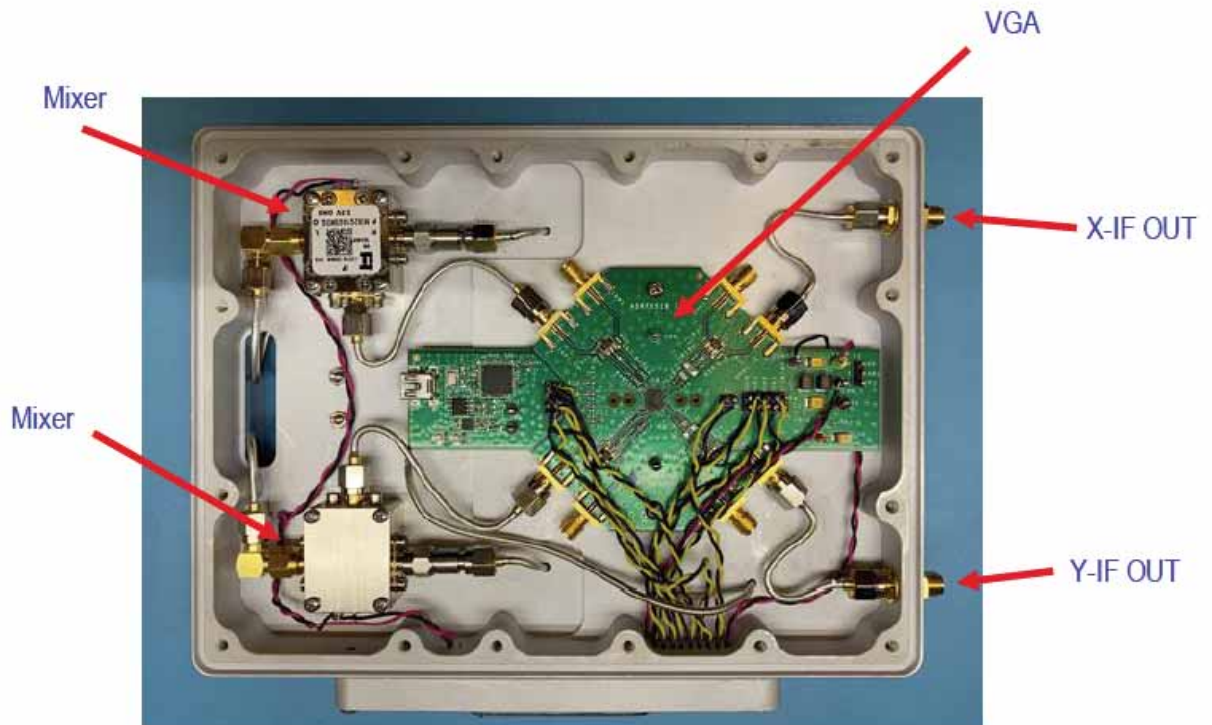
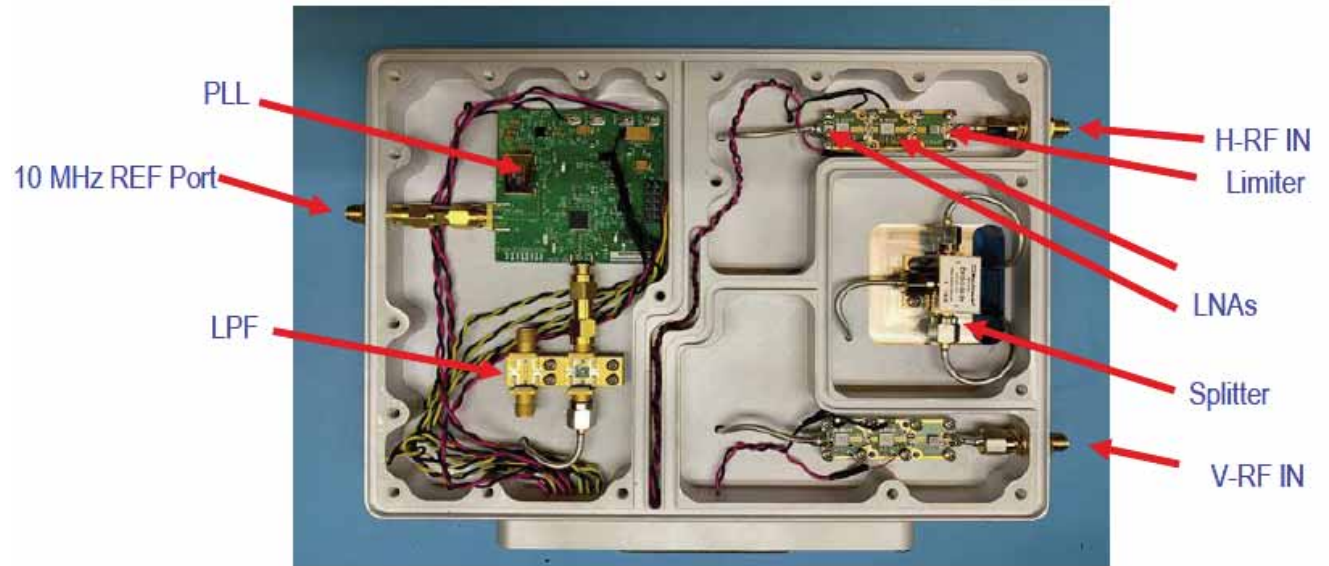
PA last stage: CGHV96100F2-AMP, Frontside



PA last stage: CGHV96100F2-AMP, Backside

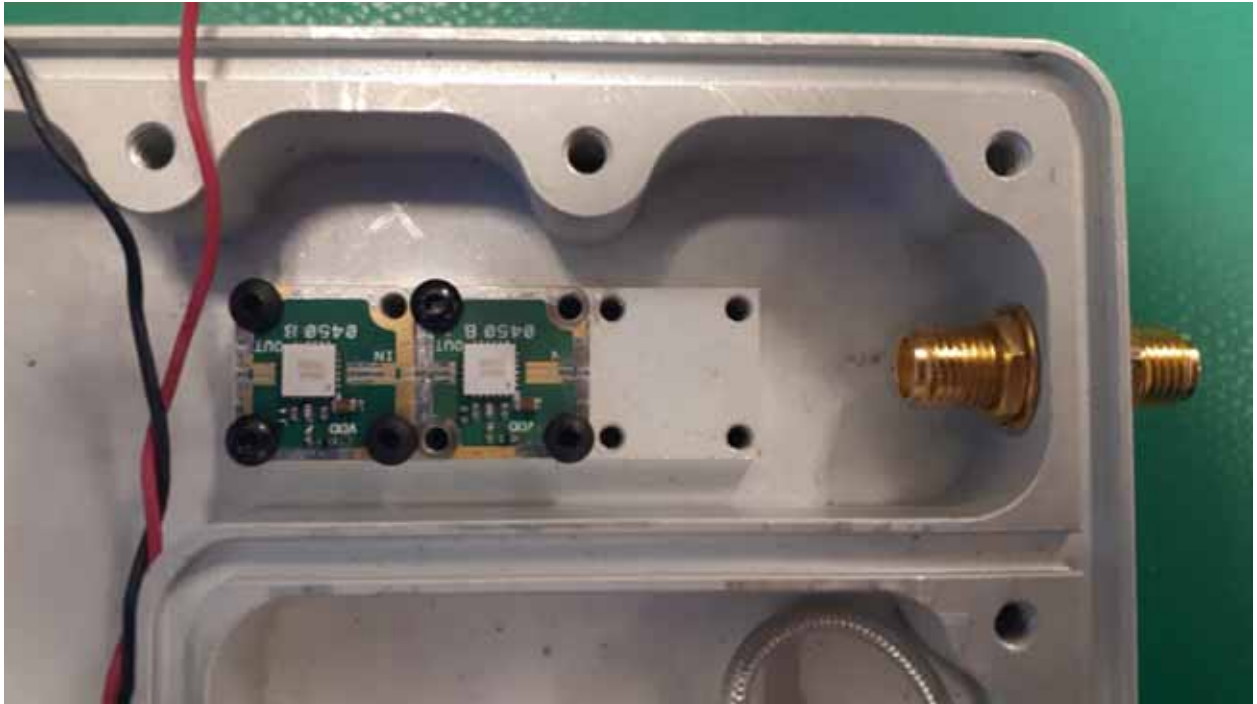


Receiver Module





Limiter



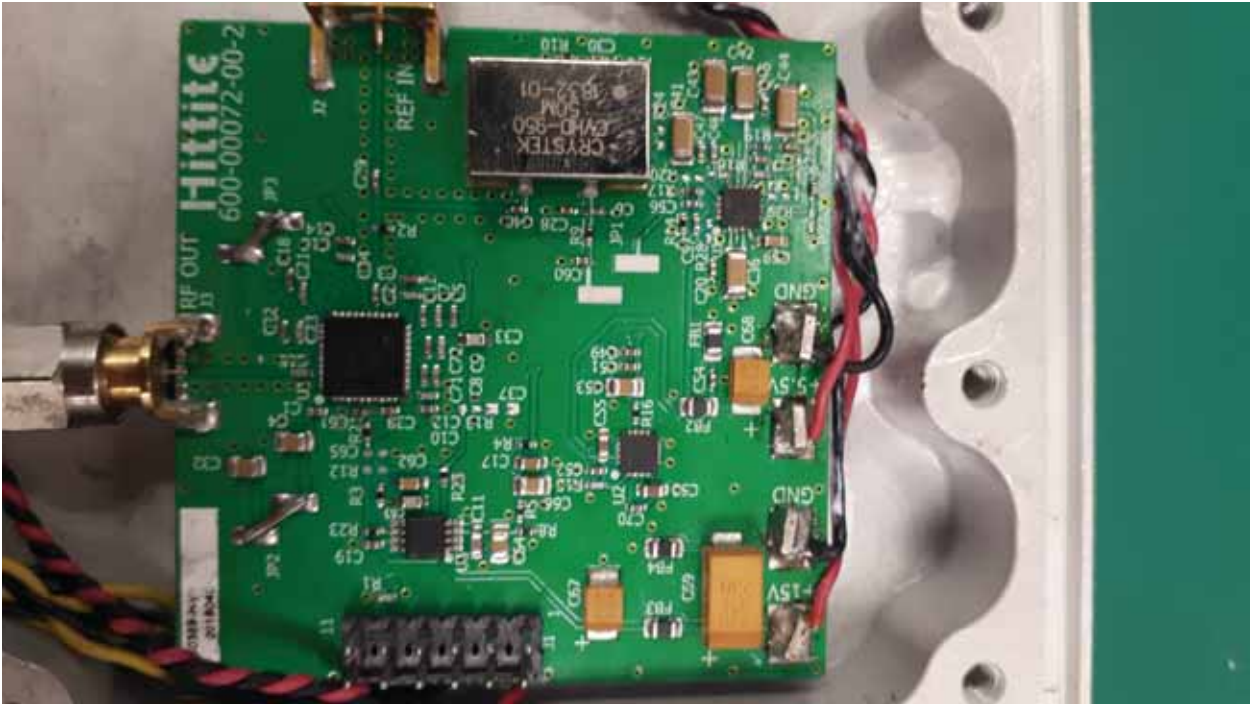
Splitter



LPF



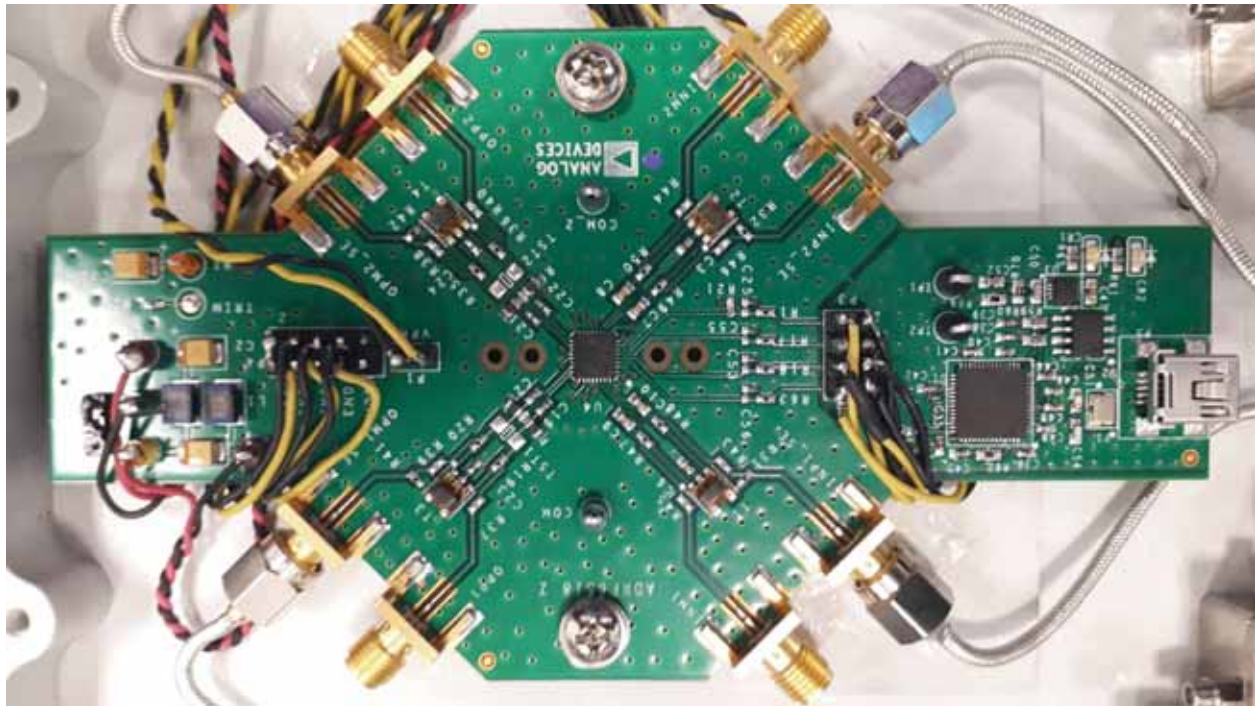
PLL, Frontside



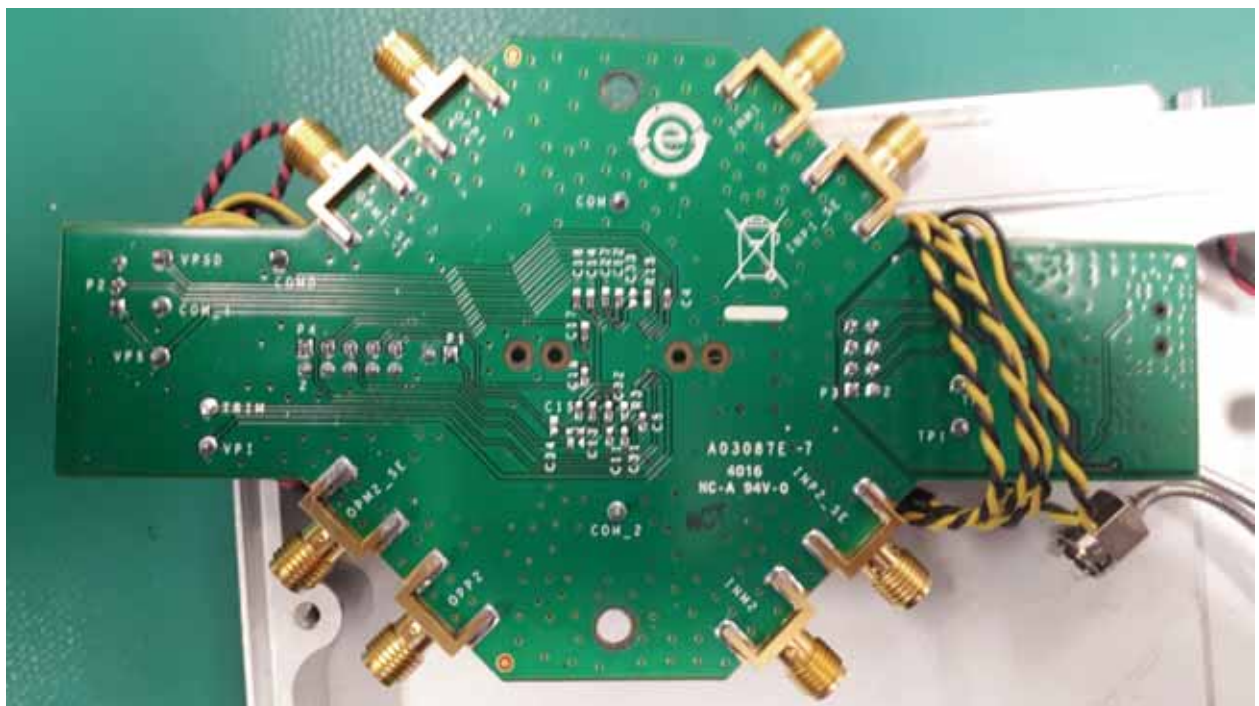
PLL, Backside



VGA, Frontside



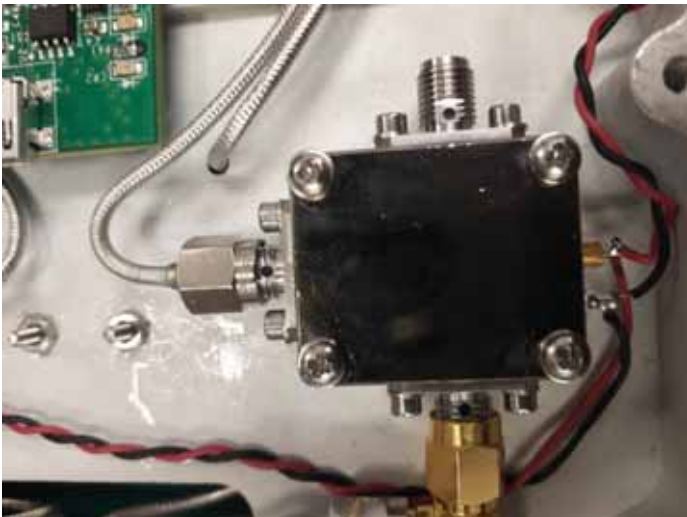
VGA, Backside



Mixer, Frontside



Mixer, backside



LNA



Data Acquisition Board (DAQ), Frontside



Data Acquisition Board (DAQ), Backside



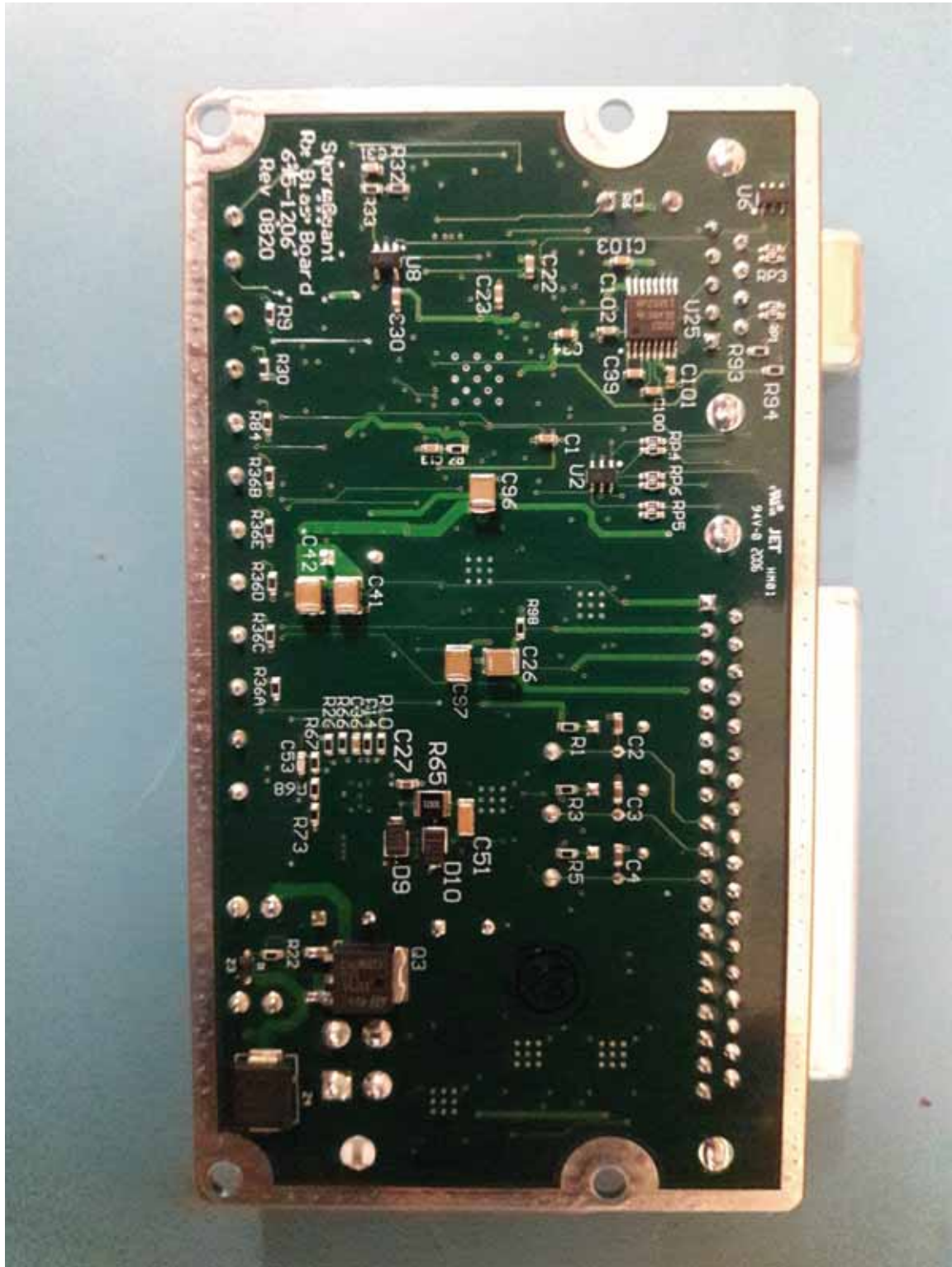
Transmitter BIAS Board, Frontside



Transmitter BIAS Board, Backside



Receiver BIAS Board, Backside



Positioner Board

