



KTSL-FC1-UV-KO

BLUETOOTH WIRELESS FIXTURE CONTROLLER

INSTALLATION AND OPERATING INSTRUCTIONS

Read and understand all warnings and notes stated below before proceeding with installation.

- Operating temperature: -40°C/-40°F to 45°C/113°F
- Do not use with enclosed metal luminaire.
- Do not expose directly to water.
- Not for outdoor use.
- Use only one controller per luminaire.

Warning: Install/use in accordance with appropriate electrical codes and regulations.

Warning: If you are not sure about any part of these instructions, consult a qualified electrician.

Warning: Controlling a load in excess of the specified ratings will damage the unit and pose risk of fire, electric shock, personal injury, or death. Check your load ratings to determine the unit's suitability for your application.

Warning: To avoid fire, shock, or death, turn off power at circuit breaker or fuse box and test to ensure that the power is off before wiring. Installation without cutting power may also cause device malfunction.

Cautions:

- Disconnect power when servicing luminaire or changing bulbs.
- Use this device with copper or copper-clad wire only. With aluminum wire, use devices marked CO/ALR or CU/AL only.
- Do not attempt to disassemble or repair.
- Clean outer surface with a damp cloth only.



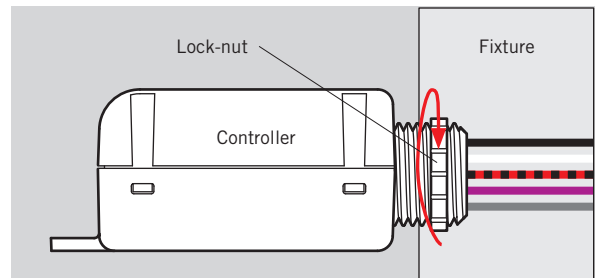
INSTALLING

For 1/2" Knockout (KO) Installation

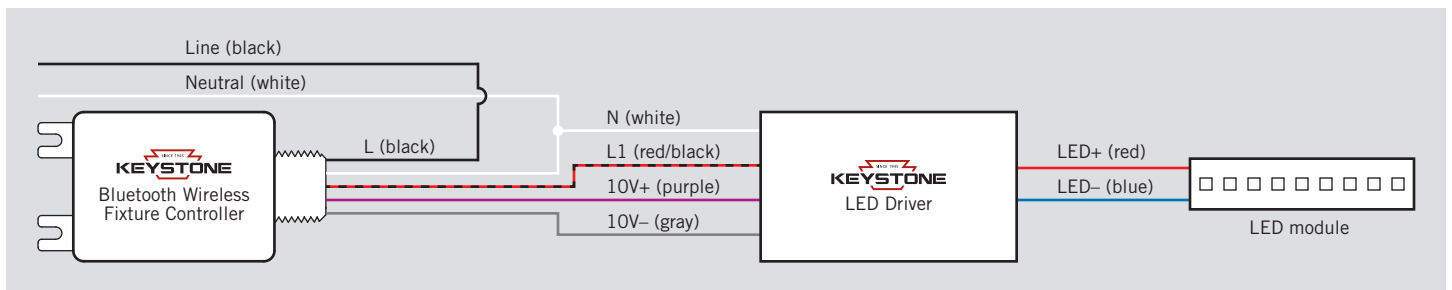
1. Remove the locknut on the 1/2" KO threading of the device.
2. Route wires and device threading through a 1/2" KO on fixture.
3. Place lock-nut over wires and screw onto threading to tighten controller to fixture (see illustration to right).
4. Connect controller wires (see "Wiring" below).

For Screw Tab Installation

1. Position controller such that it is not fully enclosed by metal.
2. Secure controller into position with the screws appropriate for the mounting surface.
3. Connect controller wires (see "Wiring" below).

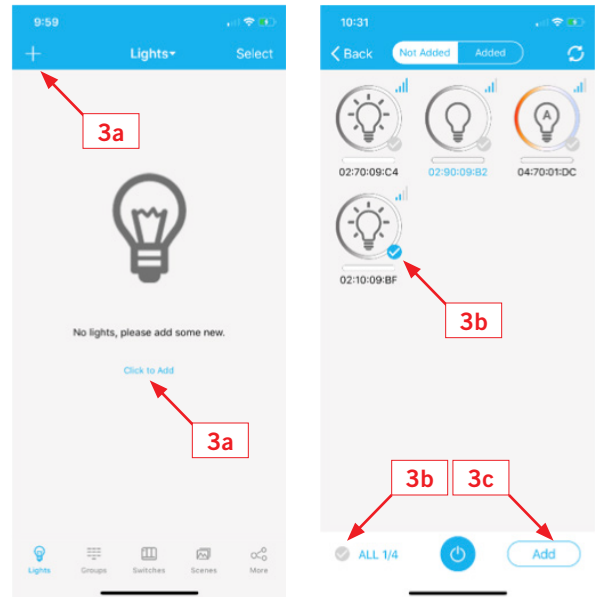


WIRING



COMMISSIONING

1. Search for and download the SmartLoop app (logo pictured to right)
2. Turn on power to the fixture/controller.
3. In the SmartLoop app:
 - a. Press the '+' sign or 'Click to Add' to search for fixtures (see illustration to right: 3a).
 - b. Press the check mark next to fixtures to add individual controllers or press bottom left check mark to add all controllers (see illustration to right: 3b).
 - c. Press 'Add' to confirm (see illustration to right: 3c).
4. For further system commissioning, see *Quick-Start Guide* and *User Manual* at www.keystone.com.



DECOMMISSIONING

Perform the following power cycle sequence:

1. Power On for 1 second, then Off for 10 seconds
2. Power On for 1 second, then Off for 10 seconds
3. Power On for 1 second, then Off for 10 seconds
4. Power On for 10 seconds, then Off for 10 seconds
5. Power On for 10 seconds, then Off for 10 seconds
6. Turn the fixture back on. The device should be factory reset (decommissioned), and it should then show up when you search for fixtures.

FCC statement:

This device complies with Part 15 of the FCC rules. Operation is subject to the following two conditions: 1) this device may not cause harmful interference, and 2) this device must accept any interference received, including interference that may cause undesired operation.

This equipment has been tested and found to comply with the limits for a Class B digital device, pursuant to Part 15 of the FCC rules. These limits are designed to provide reasonable protection against harmful interference in a residential installation. This equipment generates, uses and can radiate radio frequency energy and if not installed and used in accordance with the instructions, may cause harmful interference to radio communications. However, there is no guarantee that interference will not occur in a particular installation. If this equipment does cause harmful interference to radio or television reception, which can be determined by turning the equipment off and on, the user is encouraged to try correct the interference by one or more of the following measures:

- Reorient the receiving antenna.
- Increase the separation between the equipment and receiver.
- Connect the equipment into an outlet on a circuit different from that to which the receiver is connected.
- Consult the dealer or an experienced radio/TV technician for help.

Changes or modifications not expressly approved by the party responsible for compliance could void your authority to operate the equipment.

SAVE THESE INSTRUCTIONS