



USER MANUAL

DONNER KARAOKE MICROPHONE DKM-KP100

CONTENTS

English ----- 01-06

Français ----- 07-12

Deutsche ----- 12-18

Italiano ----- 19-24

Español ----- 25-30

日本語 ----- 31-36

Welcome to Donner

Thank you for purchasing the Donner Karaoke Microphone DKM-KP100!

The DKM-KP100 is a Bluetooth wireless Karaoke microphone.

You can enjoy singing at home or at parties for its easy to pair with your Bluetooth-enabled devices (smartphones, tablets and computers). Built-in battery and DSP offer long-lasting hours of fun and present brilliant sound effects.

Please take the time to visit www.donnerdeal.com and get more information.

Features

- Bluetooth wireless connectivity for easily pairing with Bluetooth-enabled devices
 - Easy operation with buttons on the microphone
 - Equipped with professional DSP audio processor
 - Support duet sing
 - Support recording to smartphones or tablets
 - USB-C interface for power charging and data transmission
-

PRECAUTIONS

* Please read the following in detail first before operation.

- Keep and follow these instructions.
- Do not store it in the following environments: Direct sunlight, high temperature, excessive humidity, excessive dust, strong vibration.
- Do not disassemble or modify this product to avoid the danger of fire and electric shock.
- Do not submerge in water or drop water onto or into it.
- Do not place this product on an uneven surface or any other unstable place.
- Do not clean the product with thinners, alcohol, or similar chemicals to avoid discoloration.
- Do not insert small objects into product.

PACKAGE INCLUDE

- Donner karaoke microphone *1
- Type C-USB cable * 1
- Type C-3.5mm Aux cable *1
- Storage case *1
- User manual *1

USING THE KP-100

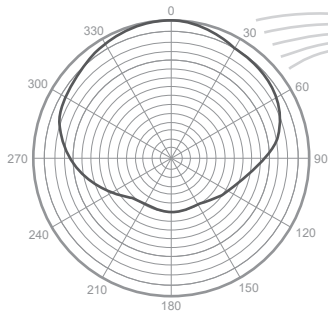
Polar Pattern

Top Level: - 77dB

Range:30 dB

Frequency: 1000 Hz

Source Level:0.1 Pa

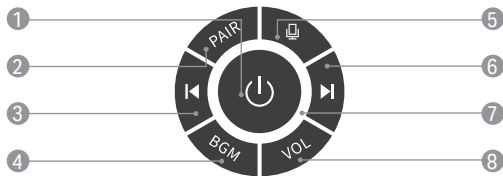
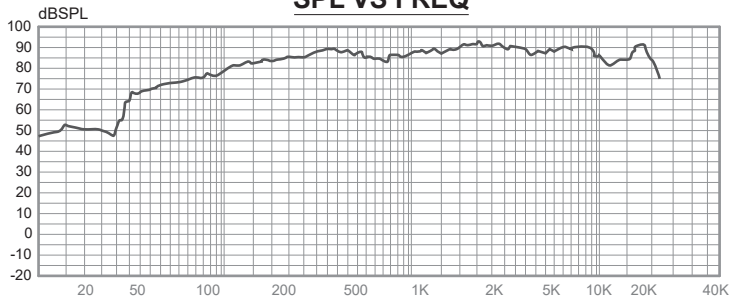


Both the acoustic environment and microphone pointing have significant effects on the sound obtained, the best way to present brilliant sound is as follow.

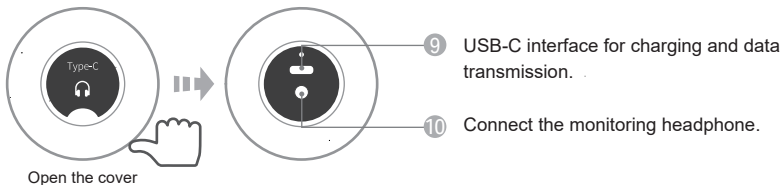


Subwoofer

SPL VS FREQ

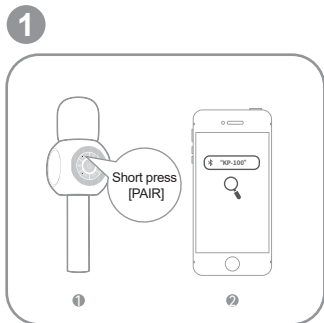


-
- ① Long press for power on/off, short press for play/pause.
 - ② Short press for Bluetooth connection/disconnection, long press about 3s for TWS pairing.
 - ③ Press to choose previous music selection.
 - ④ BGM volume level (6 level); Short press for volume up, long press for volume down.
 - ⑤ Short press for switching music styles; Long press for deleting/restoring accompanied human vocal singing of BGM.
 - ⑥ Press to choose next music selection.
 - ⑦ -The indicator light shows the current battery voltage.
-The indicator light shows the current BGM/VOL volume level. The level of indicator increases and decreases with the volume up/down.
 - ⑧ Microphone volume level (6 level); Short press for volume up, long press for volume down.



FUNCTIONS

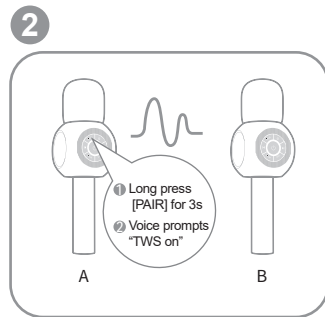
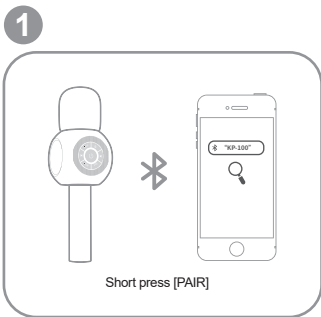
◆ Bluetooth pairing



Note:

1. indicator light will flash when waiting for pairing.
2. indicator light will be on when pairing is successful.
3. Short press again [PAIR] can disconnect the Bluetooth pairing.

◆ TWS pairing (Duet sing)



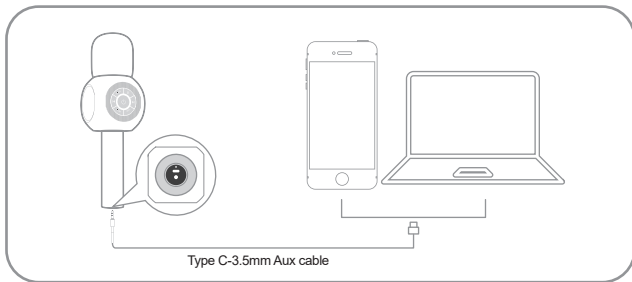
Note:

1. **PAIR** indicator light will flash 2 times and stop 1 time when waiting for TWS pairing.
2. Voice prompts "TWS off" when one KP-100 disconnect the Bluetooth or power off.
3. TWS mode cannot be used when both KP-100s are connected to different smartphones
4. The KP-100 that connected to a Bluetooth device is the host and outputs the left channel.

⚠ Cautions!

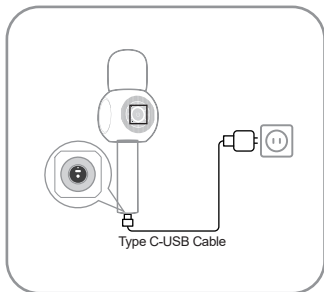
1. The microphone has an automatic Bluetooth memory function. The microphone will automatically connect to the Bluetooth device that was last paired successfully when all devices are turned on.
2. Turn off Bluetooth on the device if you don't want to connect.

◆ Recording



◆ Charging

1



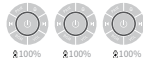
2



The indicator light shows the battery voltage.



The indicator flashes up while charging.



The indicator will be constant on after the charging is finished.

SPECIFICATIONS

Type	Dynamic (31mm dia.)
Full frequency internal magnetic horn	2* 5W Subwoofer (45mm dia.)
Diaphragm	1 (45mm dia.)
Frequency response	100Hz-10KHz
Maximum SPL	110dB 1KHz THD<1%
Bluetooth version	5.0
Connector	USB-type C、 3.5mm Aux
Battery Type	Li-Polymer
Battery Capacity	2600mAh
Battery Life	Appr. 3h
Charge Time	Appr. 3-4h
Power supply	DC 5V/1A
Dimension	Product size: Package size:
Weight	

FCC Statement

FCC Statement

Changes or modifications not expressly approved by the party responsible for compliance could void the user's authority to operate the equipment.

This equipment has been tested and found to comply with the limits for a Class B digital device, pursuant to Part 15 of the FCC Rules. These limits are designed to provide reasonable protection against harmful interference in a residential installation. This equipment generates uses and can radiate radio frequency energy and, if not installed and used in accordance with the instructions, may cause harmful interference to radio communications. However, there is no guarantee that interference will not occur in a particular installation. If this equipment does cause harmful interference to radio or television reception, which can be determined by turning the equipment off and on, the user is encouraged to try to correct the interference by one or more of the following measures:

- Reorient or relocate the receiving antenna.
- Increase the separation between the equipment and receiver.
- Connect the equipment into an outlet on a circuit different from that to which the receiver is connected.
- Consult the dealer or an experienced radio/TV technician for help

This device complies with part 15 of the FCC rules. Operation is subject to the following two conditions (1) this device may not cause harmful interference, and (2) this device must accept any interference received, including interference that may cause undesired operation.

This equipment complies with FCC radiation exposure limits set forth for an uncontrolled environment. The device can be used in portable exposure condition without restriction.