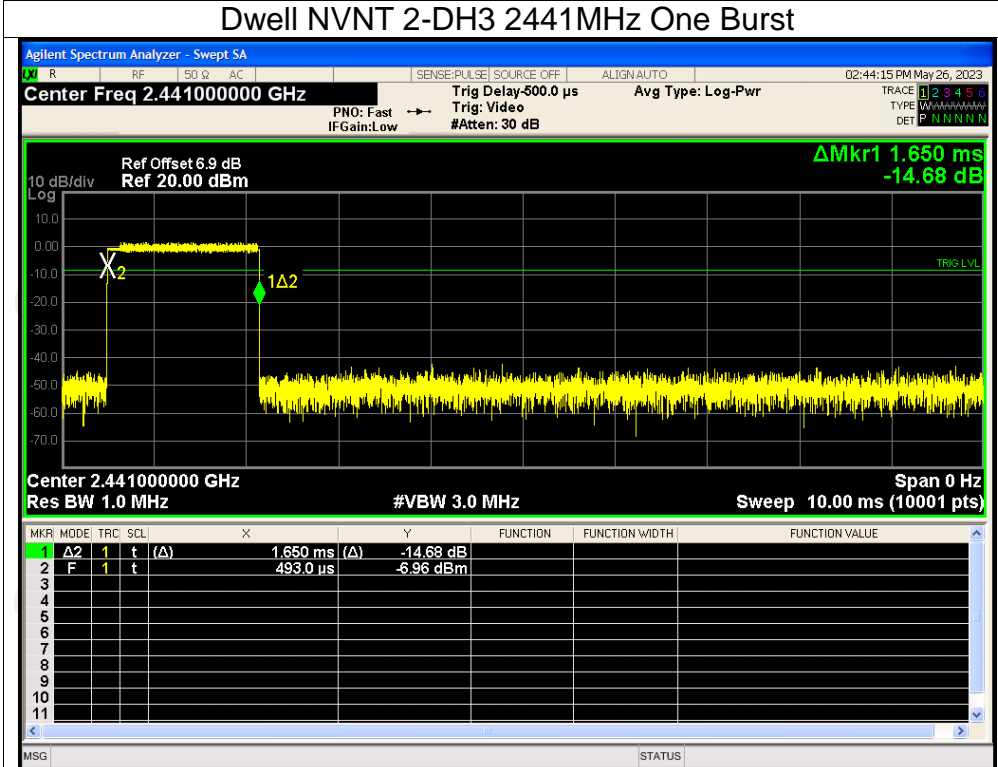
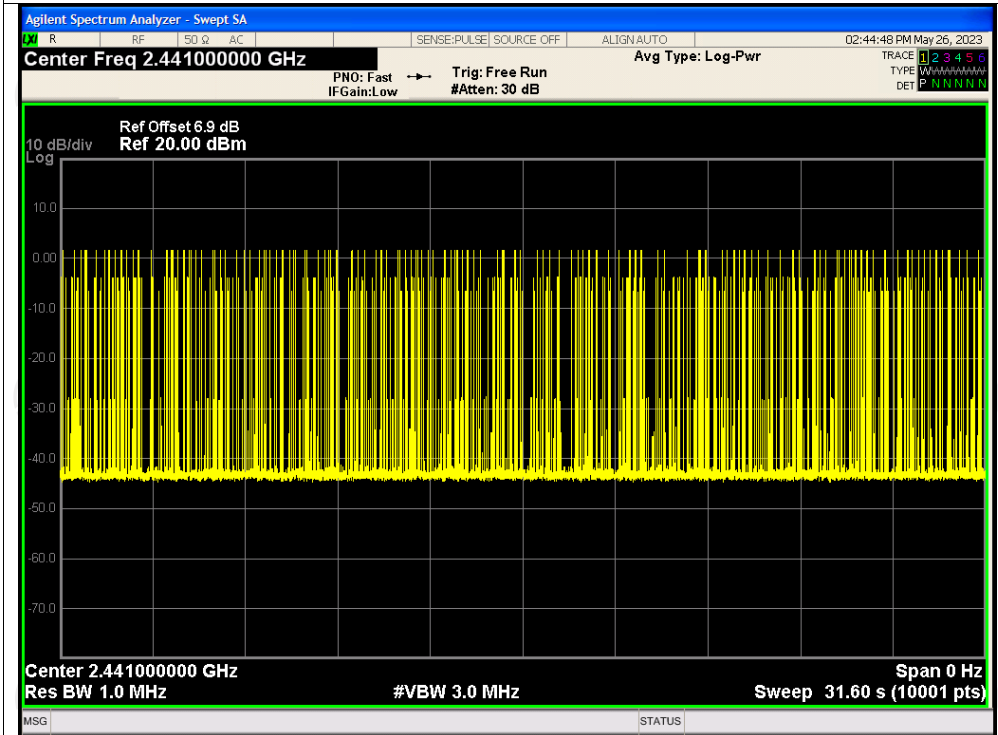


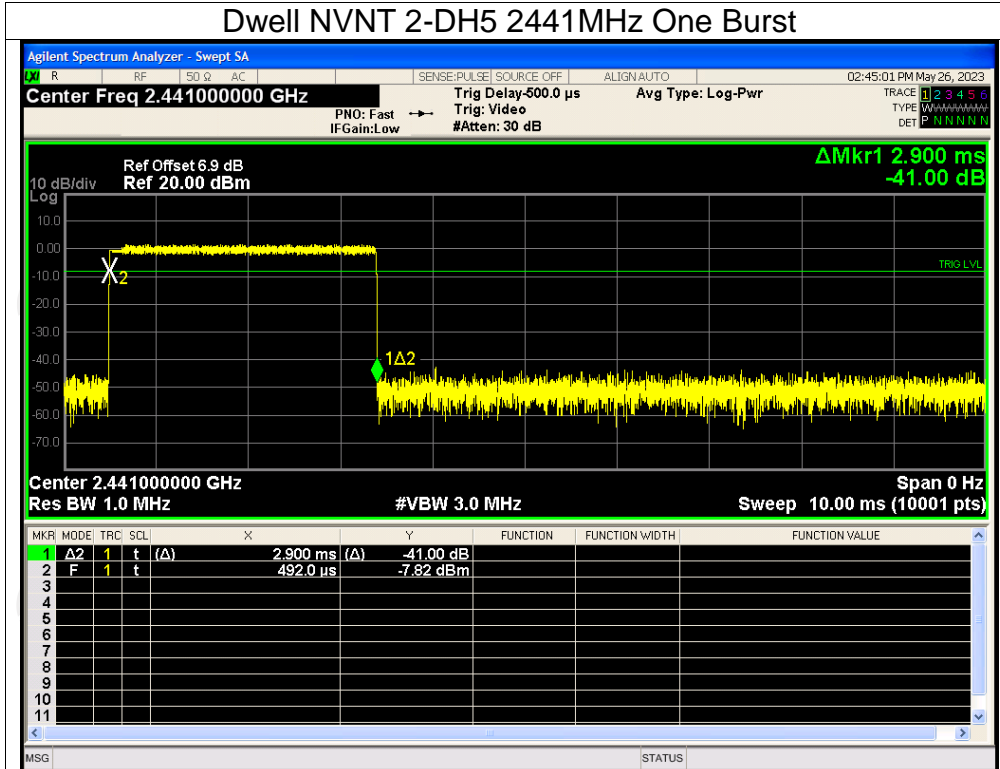
Dwell NVNT 2-DH3 2441MHz One Burst



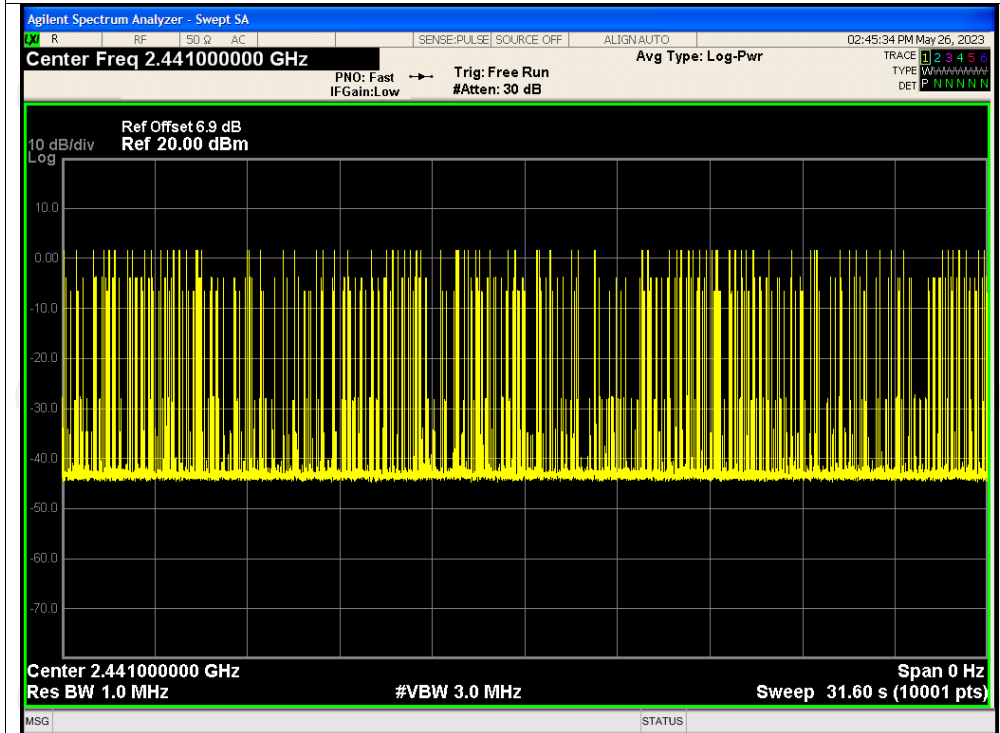
Dwell NVNT 2-DH3 2441MHz Accumulated



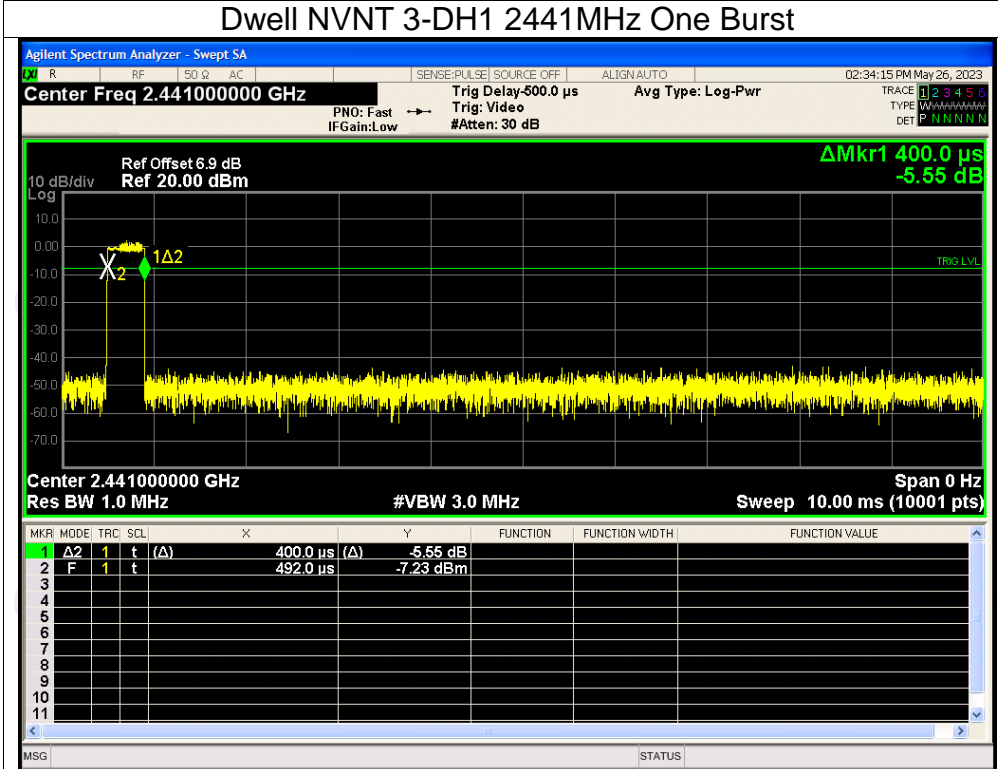
## Dwell NVNT 2-DH5 2441MHz One Burst



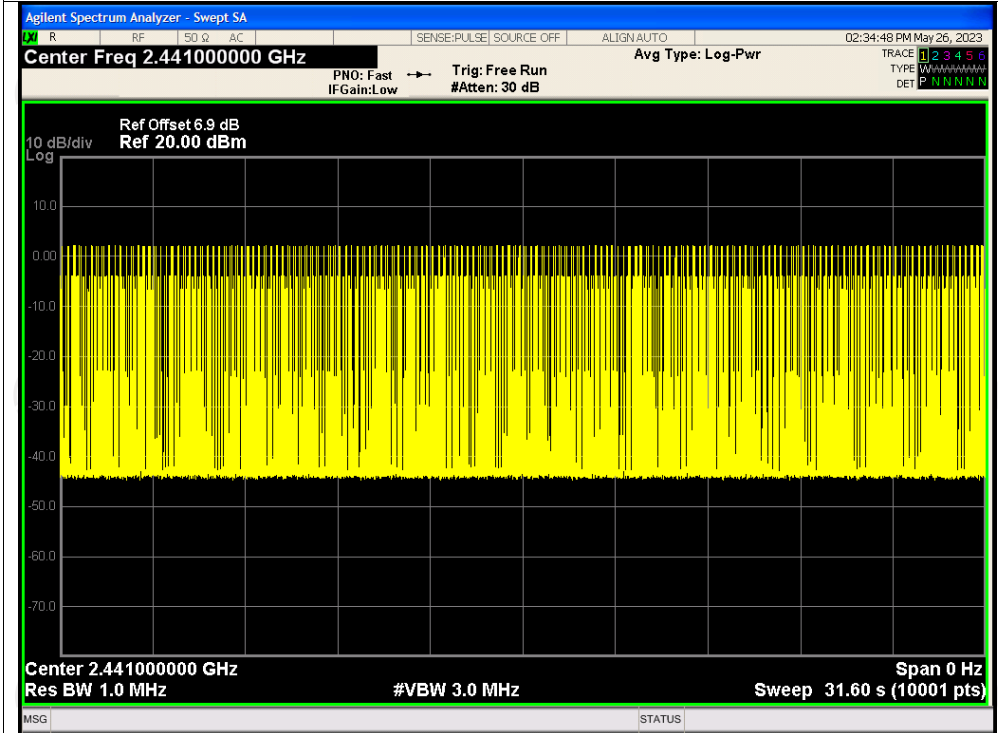
## Dwell NVNT 2-DH5 2441MHz Accumulated



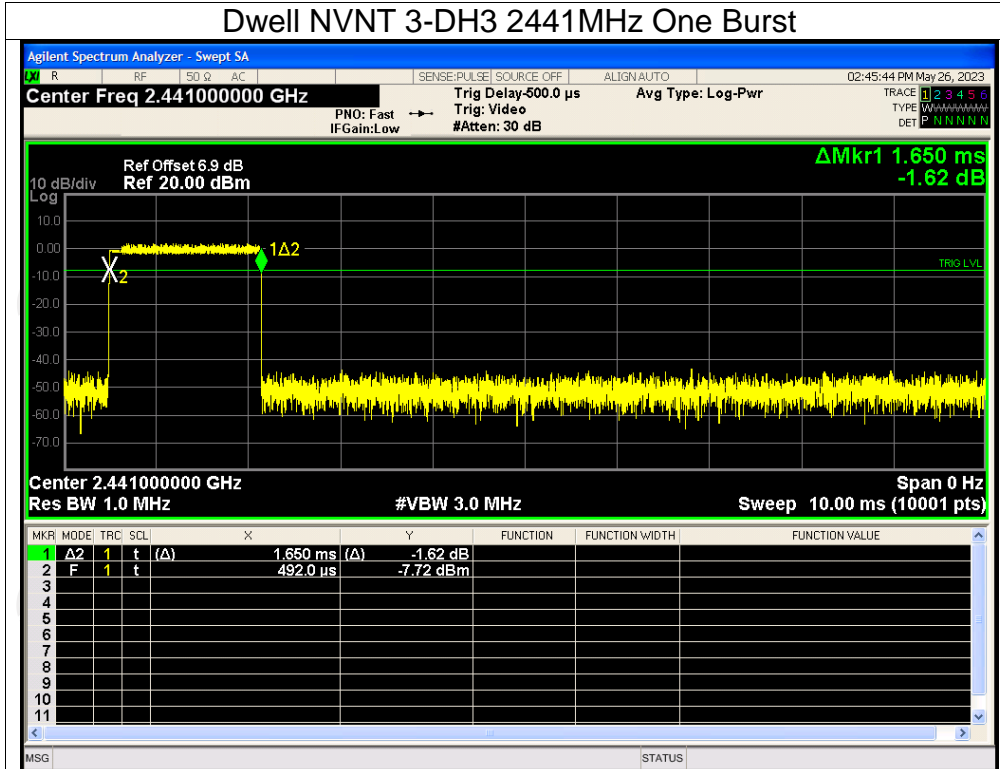
Dwell NVNT 3-DH1 2441MHz One Burst



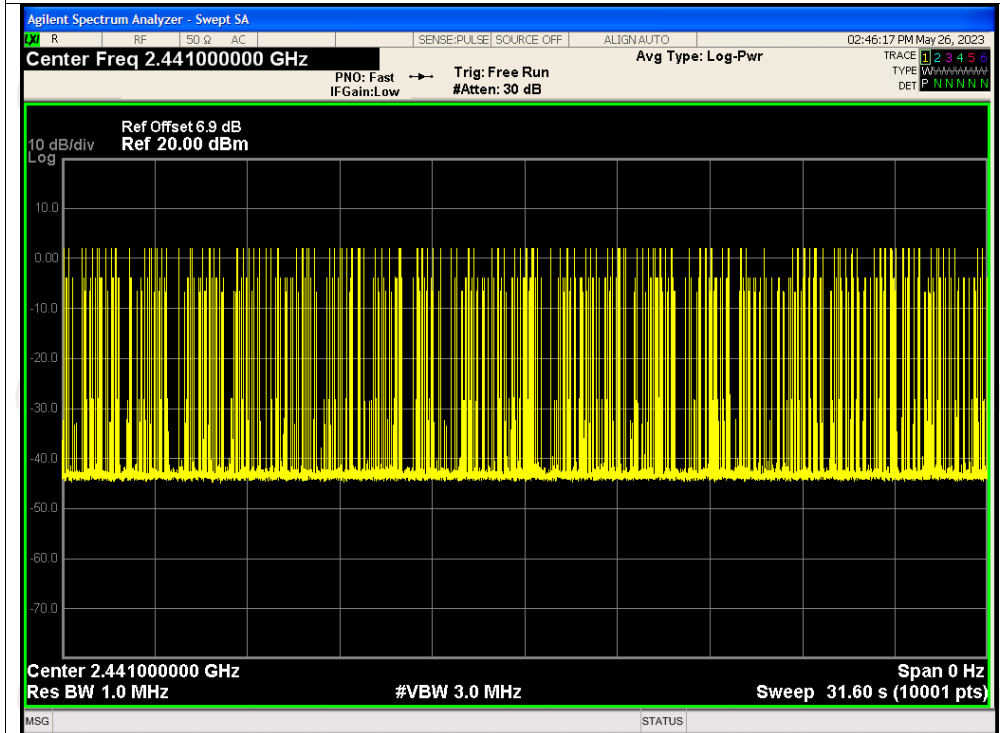
Dwell NVNT 3-DH1 2441MHz Accumulated



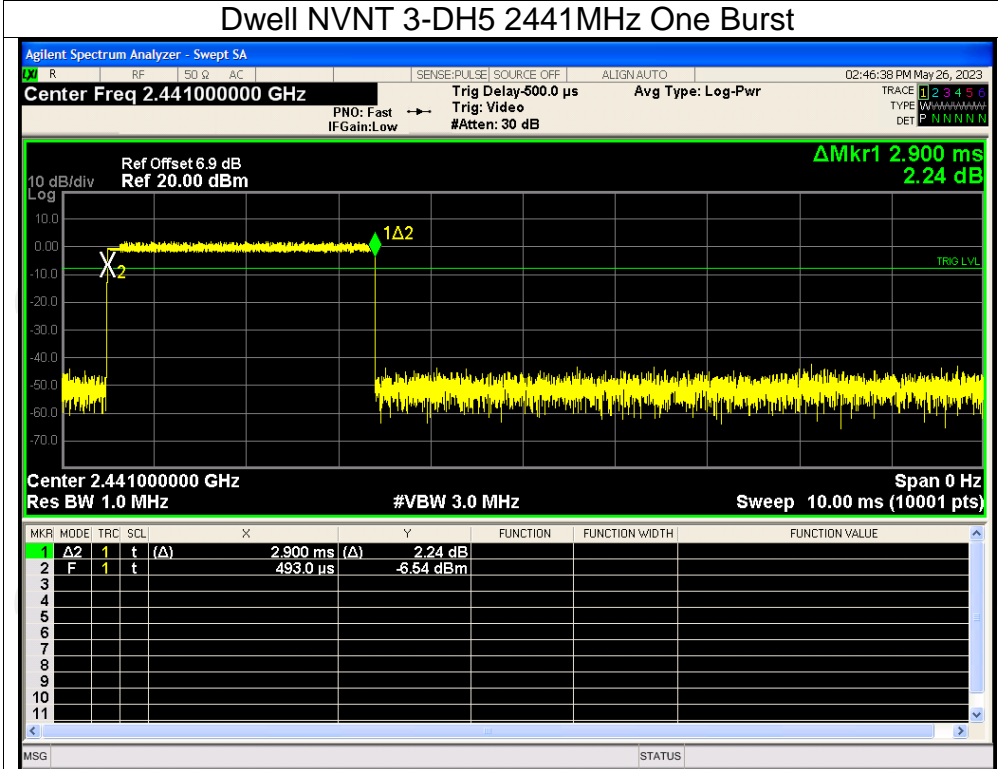
Dwell NVNT 3-DH3 2441MHz One Burst



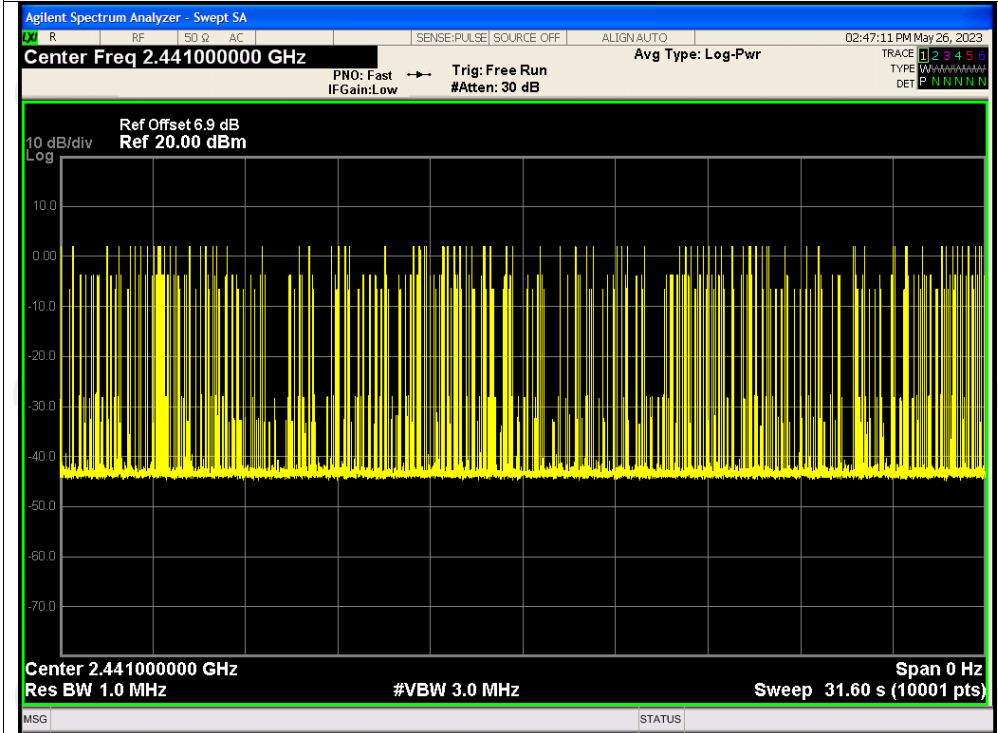
Dwell NVNT 3-DH3 2441MHz Accumulated



Dwell NVNT 3-DH5 2441MHz One Burst



Dwell NVNT 3-DH5 2441MHz Accumulated

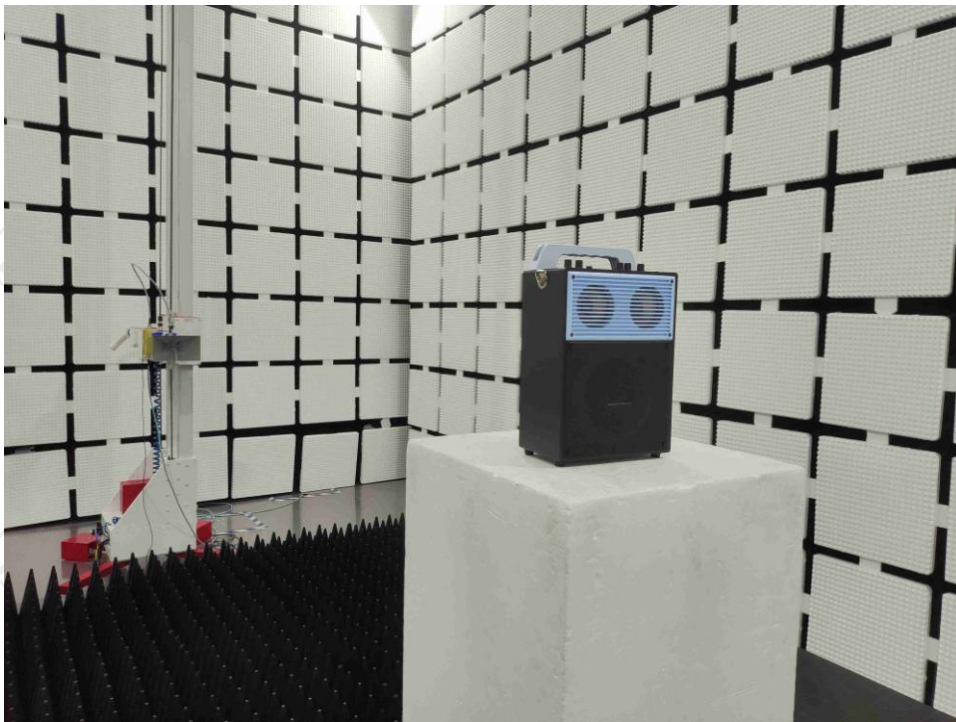
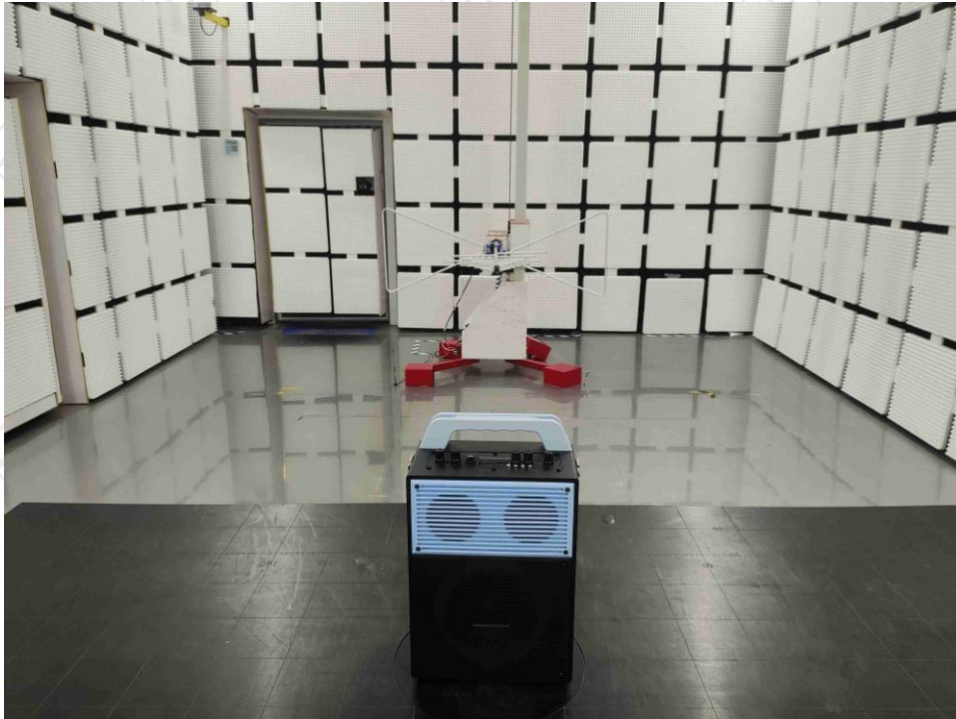


## Appendix B: Photographs of Test Setup

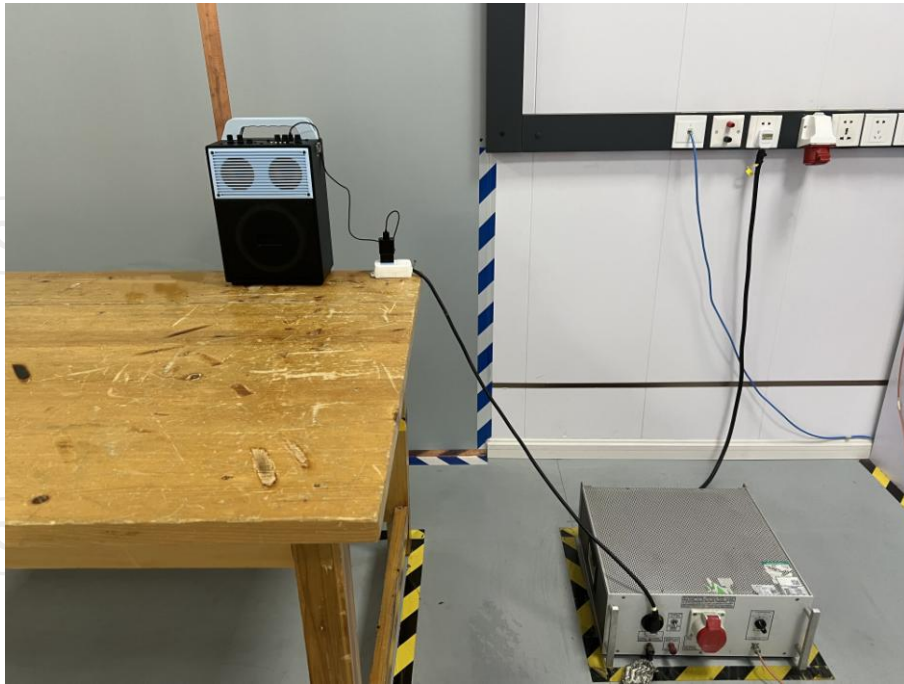
Product: Karaoke speaker

Model: MPS4

Radiated Emission



### Conducted Emission

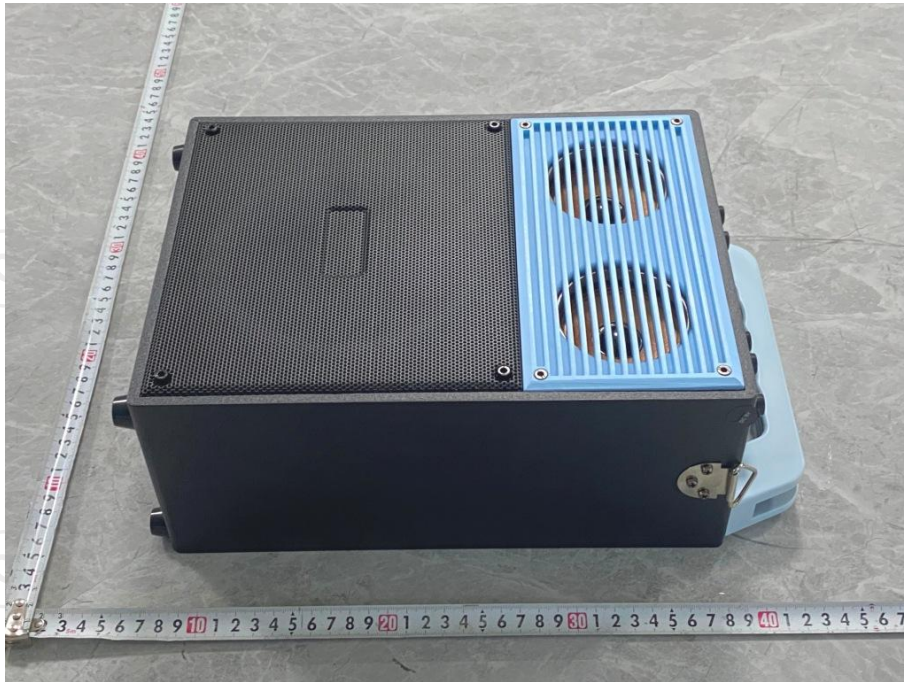


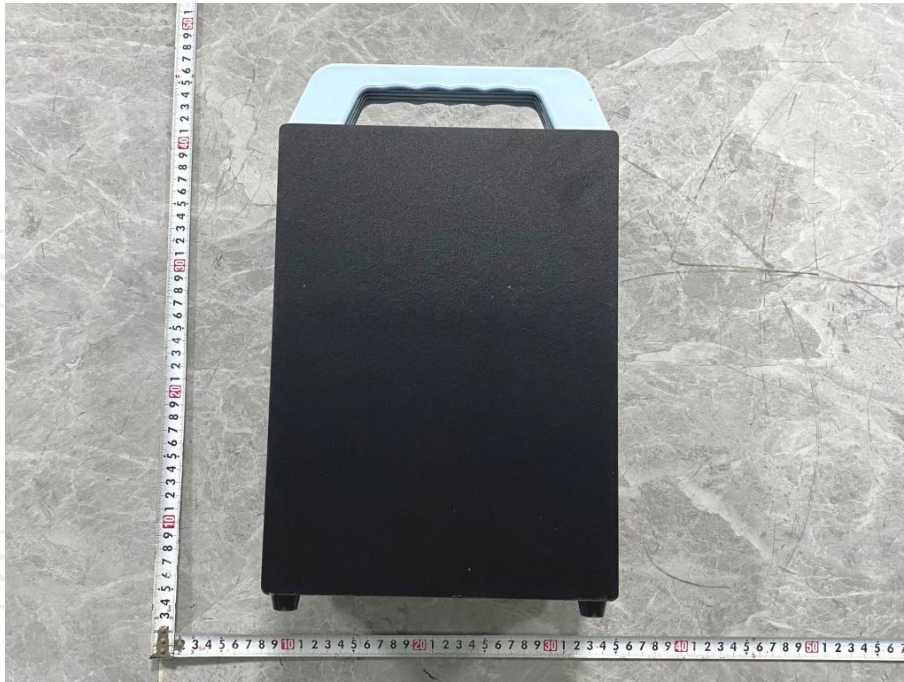
**Appendix C: Photographs of EUT**  
**Product: Karaoke speaker**  
**Model: MPS4**  
**External Photos**





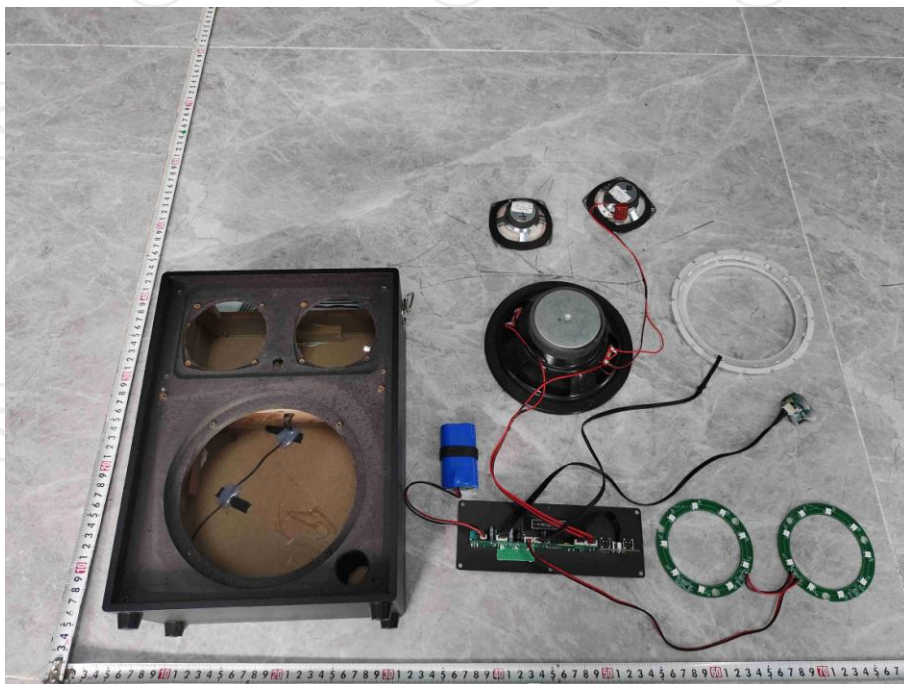


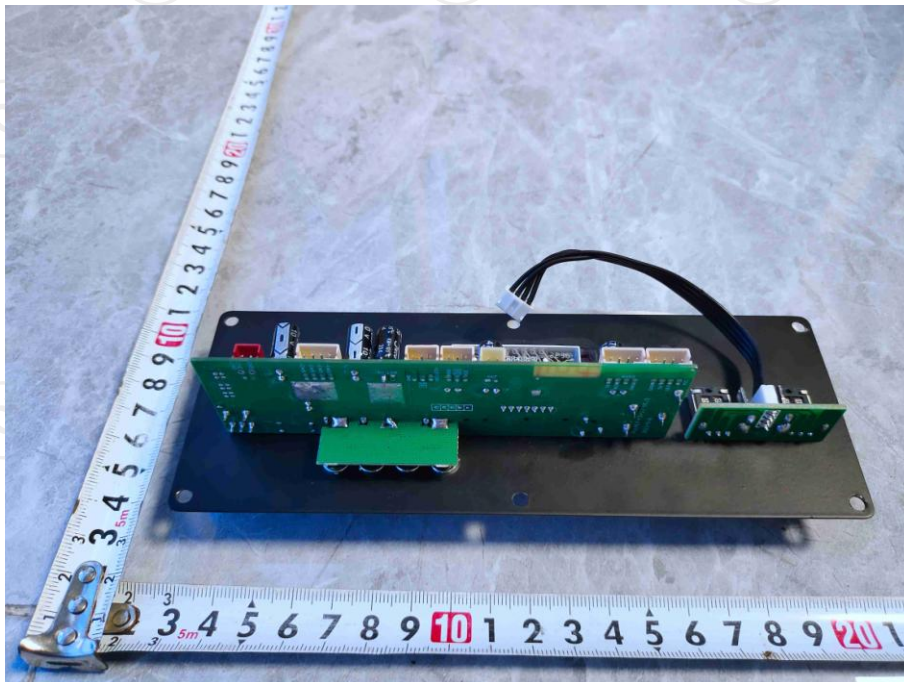


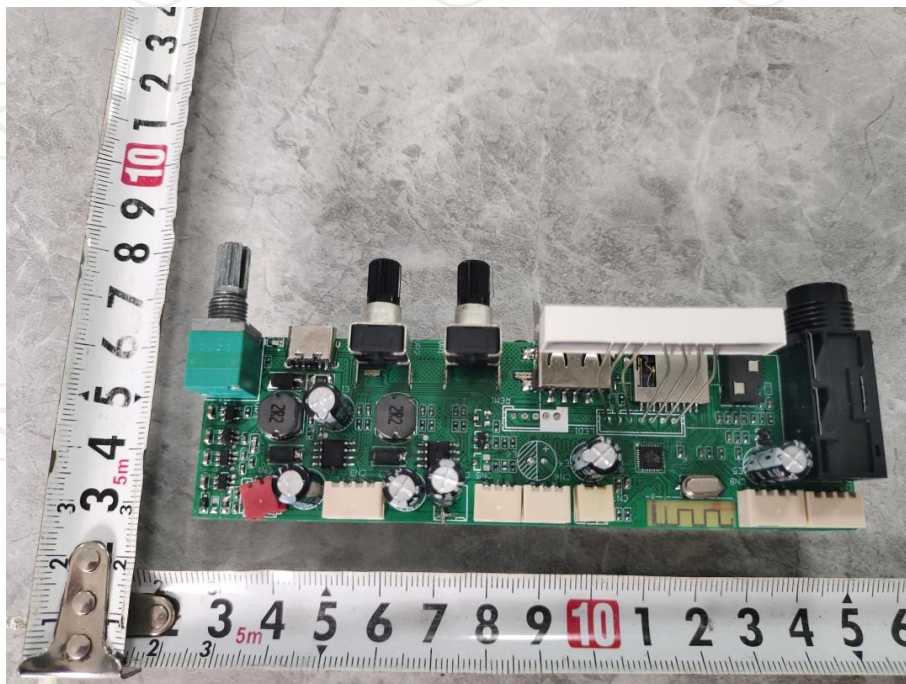
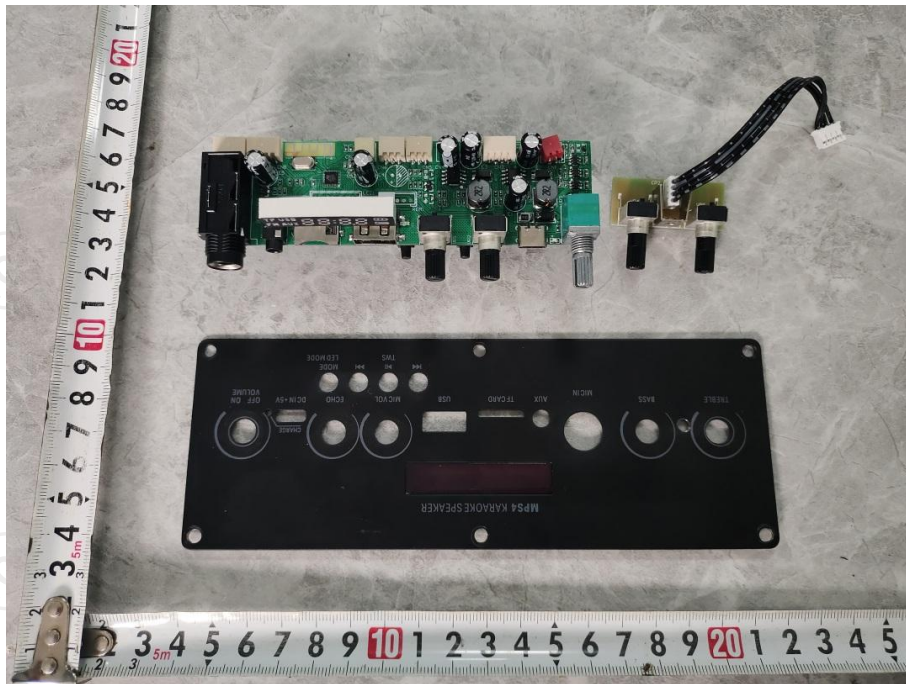


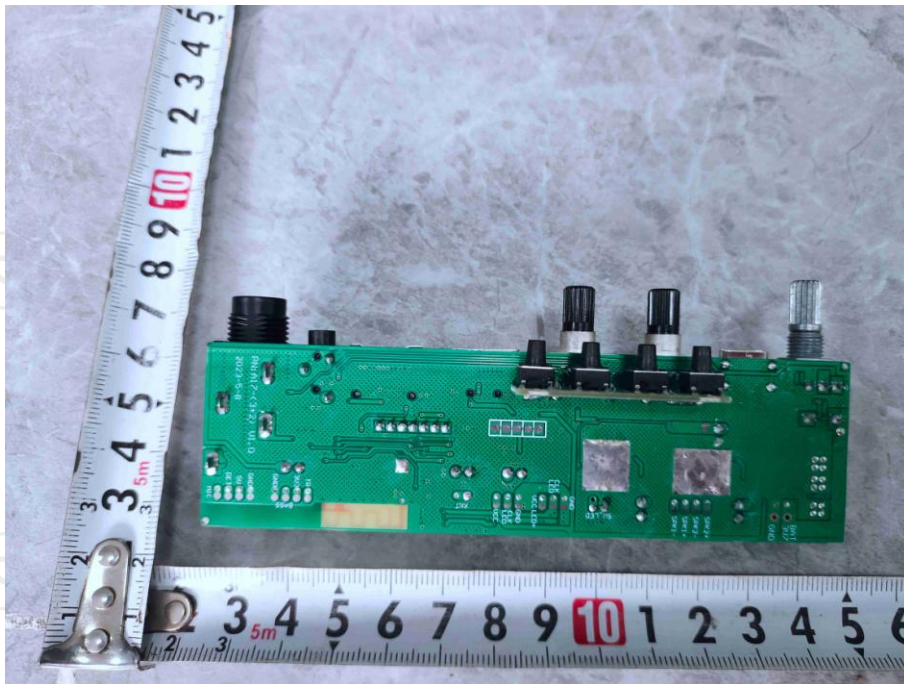
**Product: Karaoke speaker**  
**Model: MPS4**  
**Internal Photos**



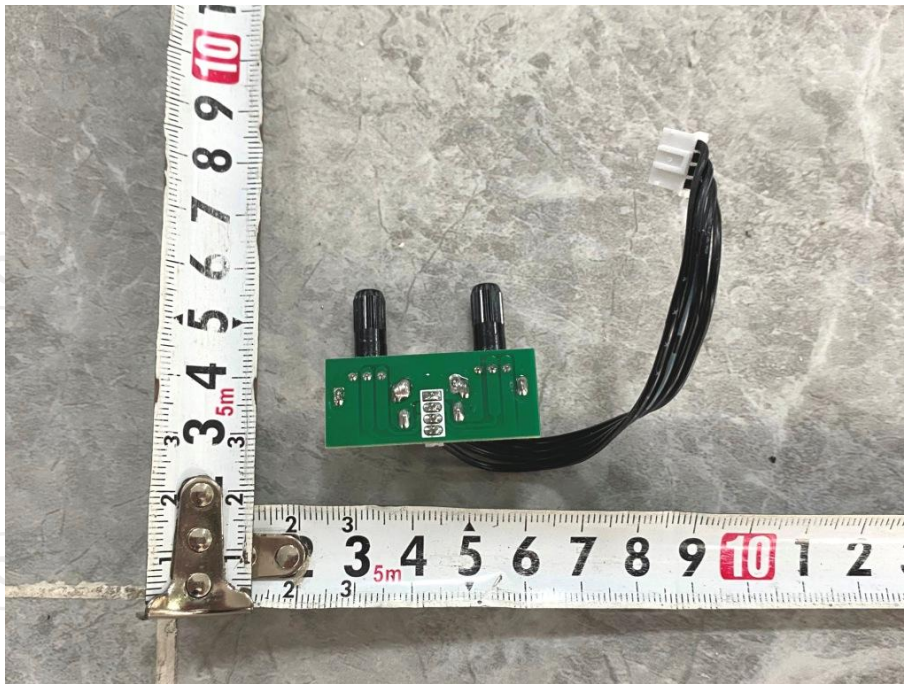


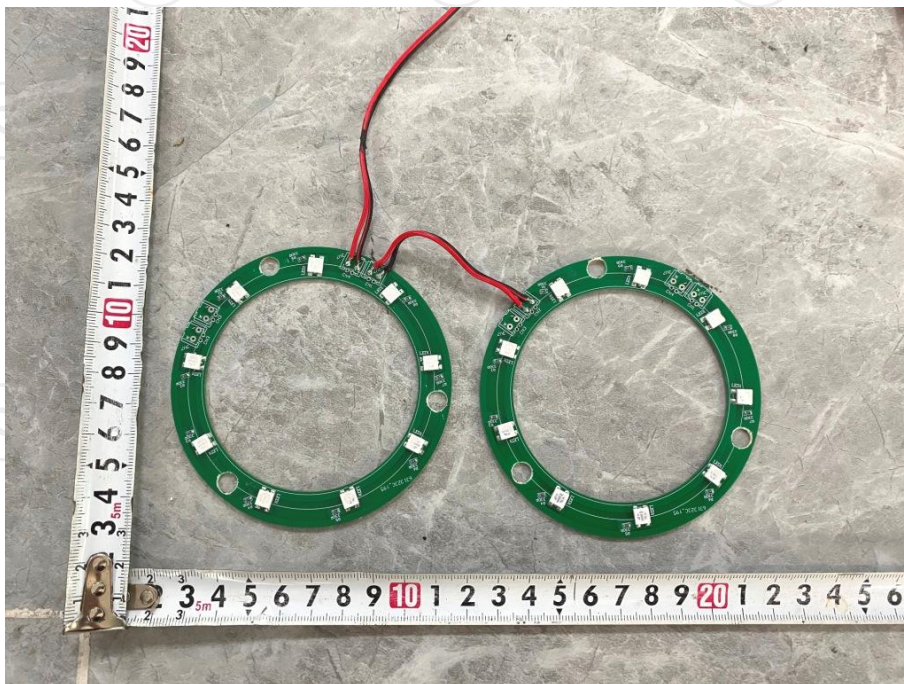
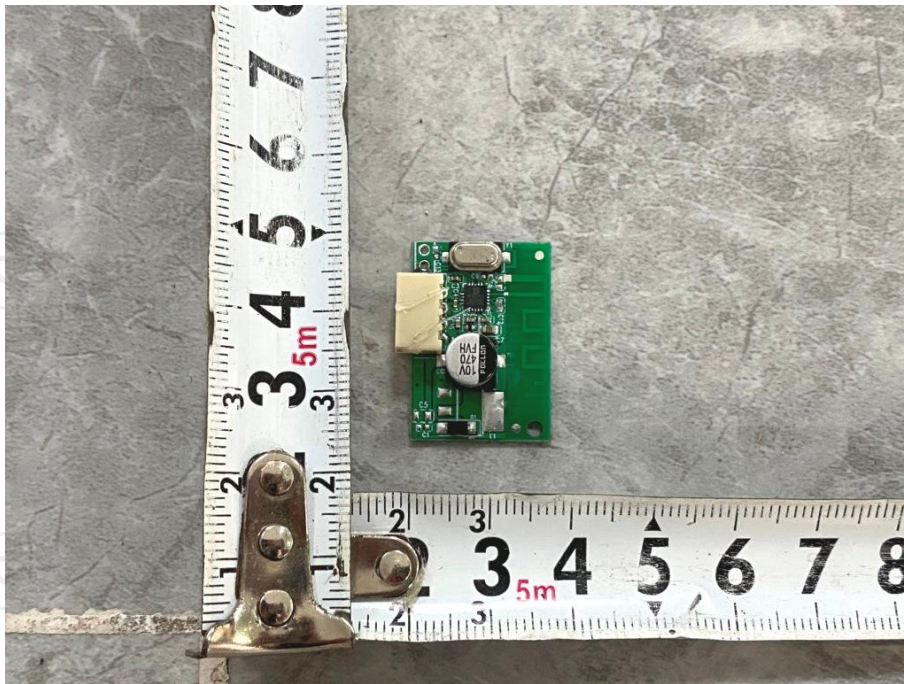


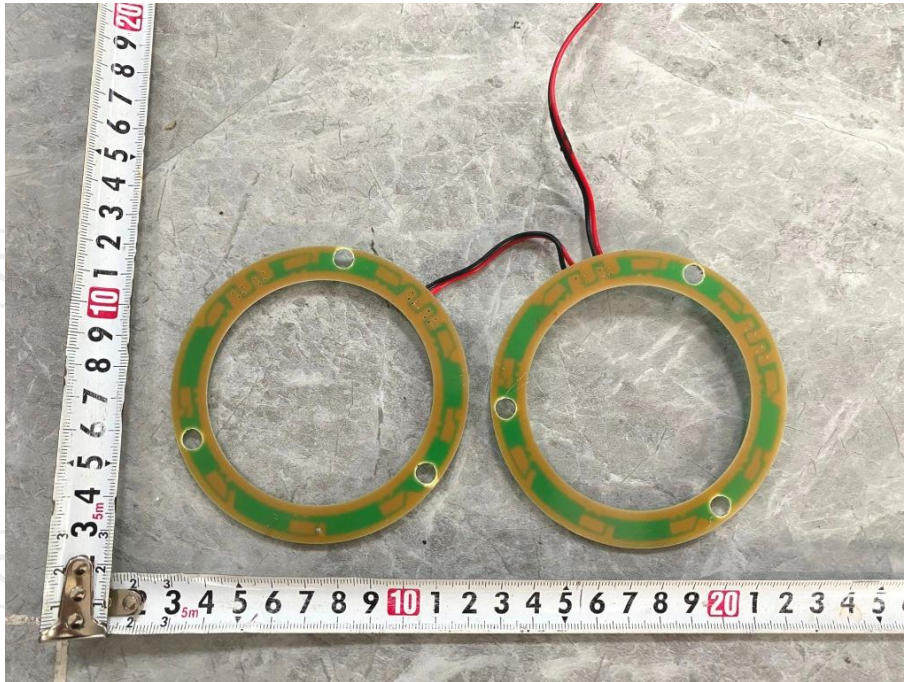




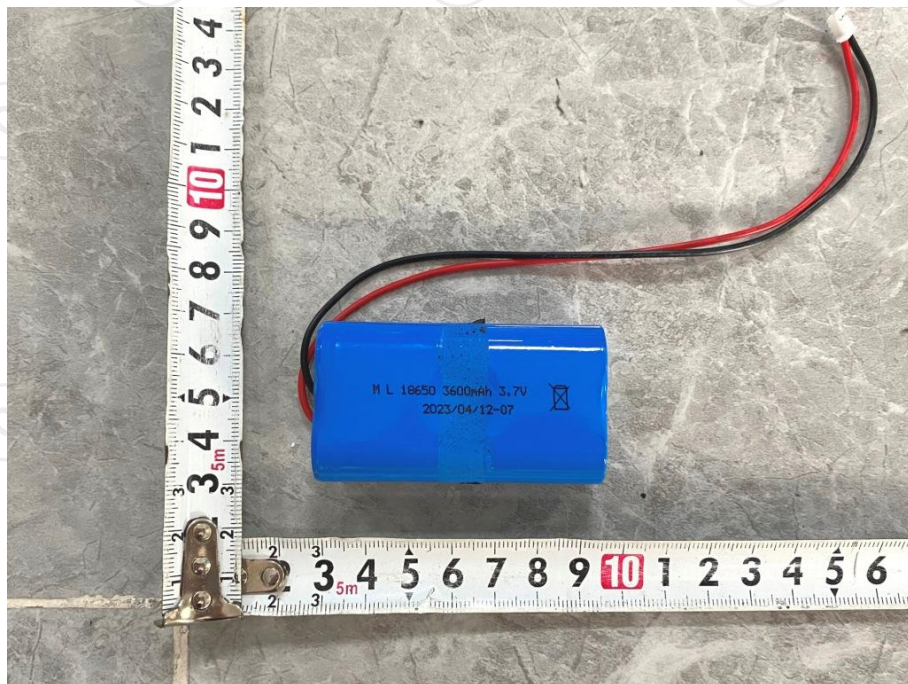
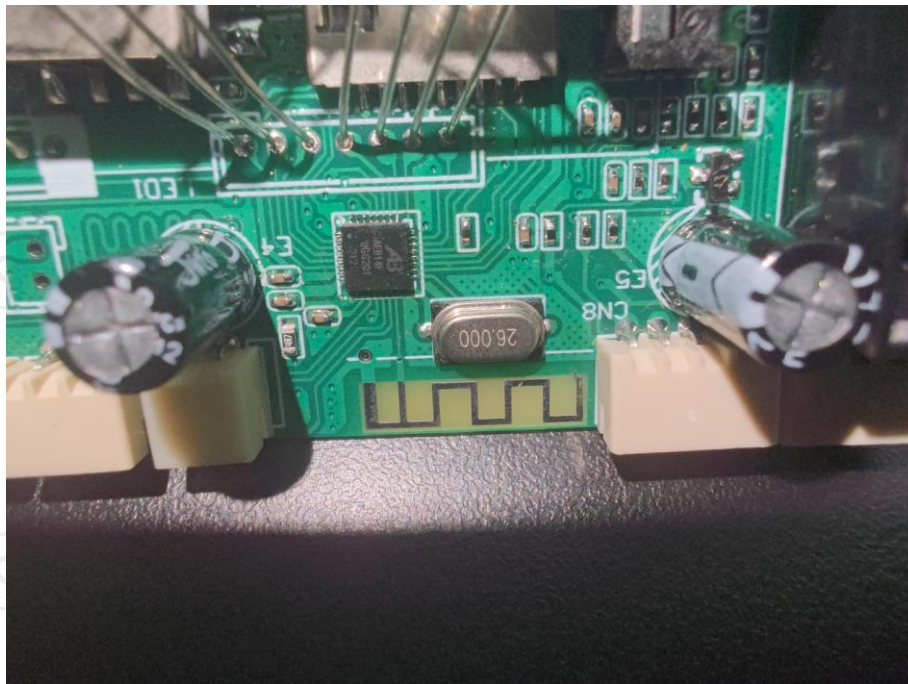












**\*\*\*\*\*END OF REPORT\*\*\*\*\***