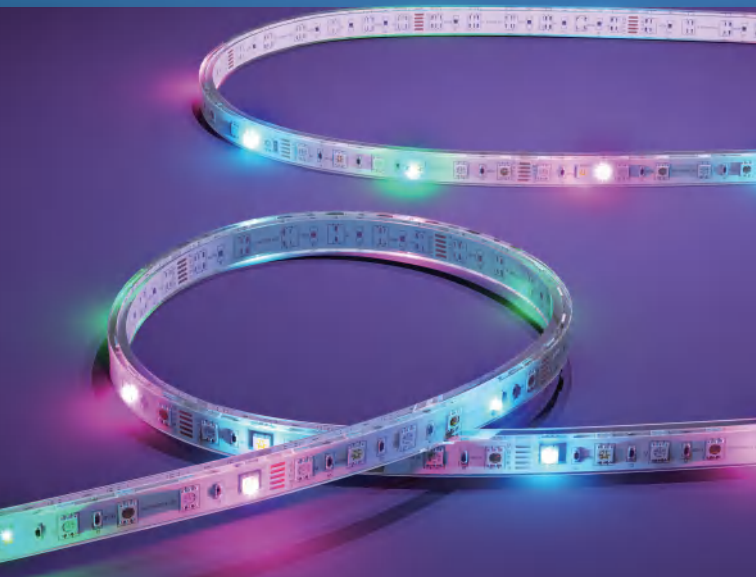




IDEAL FOR RV TRAVEL

20 FEET TOTAL LENGTH



Instruction Manual & Installation guide

Table of Contents

Welcome&Package Contents.....	Pg.1
How to Mount the Poly-Carbonate Channels.....	Pg.2
How to Mount LED Strip to PC Channels.....	Pg.3
How to Cut LED Strips to Fit Application.....	Pg.4
How to Connect LED Strip to Power.....	Pg.5
How to connect to the mobile phone	pg.7
Frequently Asked Questions	Pg.15

Add Kohree to your RVing!

Thanks for purchasing our Kohree RV Awning LED Light Strip!

We are a corporate factory focusing on RV supplies, and we will wholeheartedly improve your enjoyment of RV life.

Please review, read and understand ALL instructions to ensure proper functionality.

If you have any questions or concerns, don't hesitate to reach out to us.





Package Contents:

- 20'UV-treated poly-carbonate mounting channel
- 20'IP68 led strip w/controller&remote
- 3M VHB tape roll
- 2 sets of degreaser cleaning wipes
- 12V connection mode cables (2 types)
- 2 Extra led sealing caps
- Operating instruction manual

How to Mount the Poly-Carbonate Channels

- Make sure poly-carbonate pieces are clean and grease free,you may use provided cleaning wipes or use your own as required.
- Make sure Poly-Carbonate Channel total length works for your application,trim as necessary.
- Thoroughly clean your chosen mounting surface with an adhesive promoter (preferred) to remove any grease or dirt. You may also use rubbing alcohol.
- The best cleanliness promotes the best 3M VHB Tape bond.
- Once area is clean, let dry and/or wipe down as necessary.
- Peel one side of the provided 3M VHB tape backing and stick to mounting location.Stick 1-foot at a time for best application until entire length is covered.
- Peel other side of the 3M VHB tape backing on mounting location and firmly press each poly-carbonate channel along entire length for an extra strong hold.Start off near where the LED strip leads would connect to power.
- Install carefully as it willbe very hard to remove channel once it has been installed

How to Mount LED Strip to PC Channels

1. Now that you have all Poly-carbonate pieces installed to your desired mounting location, you are ready to mount the LED strip!
 -  Before mounting the LED strips, we highly recommend you uncoil the entire LED strip and plug it to power to test each LED diode. This step is not required but highly recommended.
 -  Make sure inside of polycarbonate channel is clean and grease free for best bond.
2. Pull 3M backer of the LED strip tube to expose the sticky side of the tape. We recommend installing 20-inches at a time.
 -  Make sure LED strip wire-end is installed near a power source.
3. Place LED strip inside polycarbonate channel, start with wire-end and firmly press to ensure good bond. Do this for the entire length of your application.
 -  Install carefully as LED strip will not come off once it has been installed.
4. Trim Polycarbonate channel as necessary to best fit your application.
5. Cut LED strip as required to best fit your application, see Page 4

How to Cut LED Strips to Fit Application

If Required Cut LED strip & waterproofing tube at MARKINGS to fit any size (Figure 1).

After cutting,use included sealing cap to fully seal LED strip from water intrusion (Figure 1.1).

For extra protection,use silicone or other sealing material around the cut and cap.



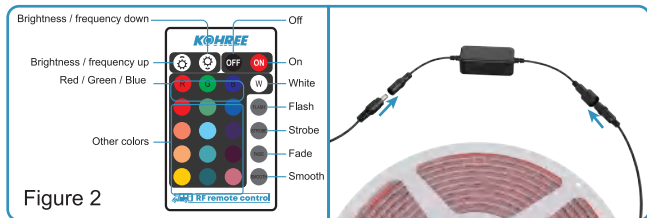
Figure 1



Figure 1.1

How to Connect LED Strip to Power

1. Connect LED Strip wire-end to RF&Phone control (Ses Figure 3A),
2. Route and place RF&Phone control (Figure 3C) in a safe and sealed location preferably to protect from water intrusion (RF&Phone control waterproof rating: IP65)
 - ⚠ Compared to IR controllers, RF&Phone control can ignore obstacles and have a control range of 10-15m. More convenient and practical
3. If drilling hole to route cables inside, use a rubber grommet or sealant to protect from water intrusion.
 - ⚠ Pay attention to tighten our waterproof knob interface to better achieve waterproof performance.



- When changing colors or dimming light please point remote directly to RF&Phone control(Figure 3C).
- Connect power cable to RF Controller (Figure 3C) that best fits your application. In your kit, there is 2 types of power cables (Figure 3 B & D) or use your own.
- Route/wire power cable to 12V source.



How to connect to the mobile phone

1. Phone control Connection

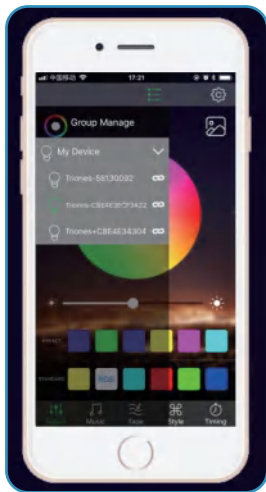
For the first time you use it or never pair with 'Happy Lighting' after moving the equipment, please following the below steps:

- **First**, please enter your phone settings, Open the mobile phone wireless connection configuration, searching and pairing with the 'Happy Lighting'.

- **Second**, Open the Happy Lighting led app, the app will auto to connect the BLE light.

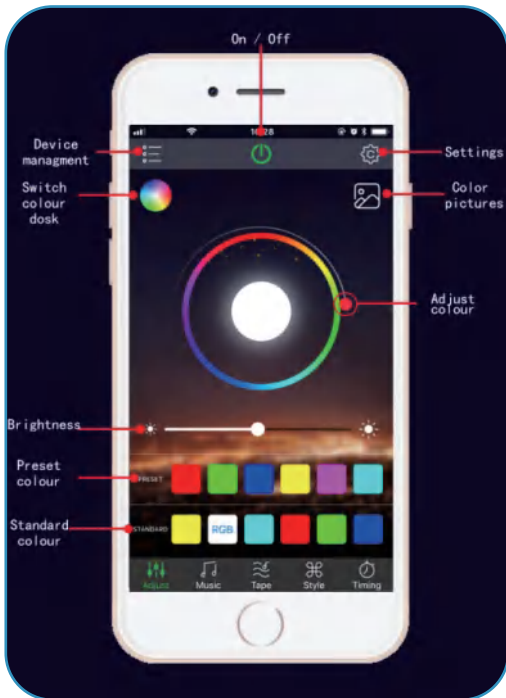


Scan the QR-Code to download the APP



2. Main User Interface

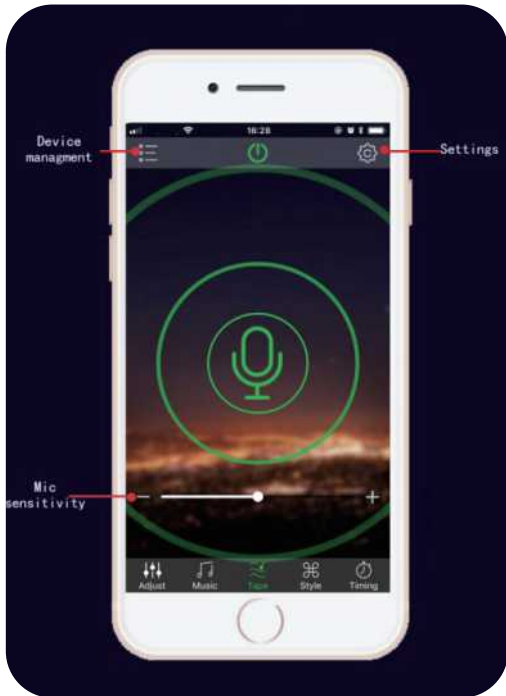
A. Adjust: Change the RGB LED color and White LED bright.



B. Music: The mobile phone broadcasts music, the LED will change with the music.



C. Mood: Change RGB LED color by phone microphone input voice rhythm.



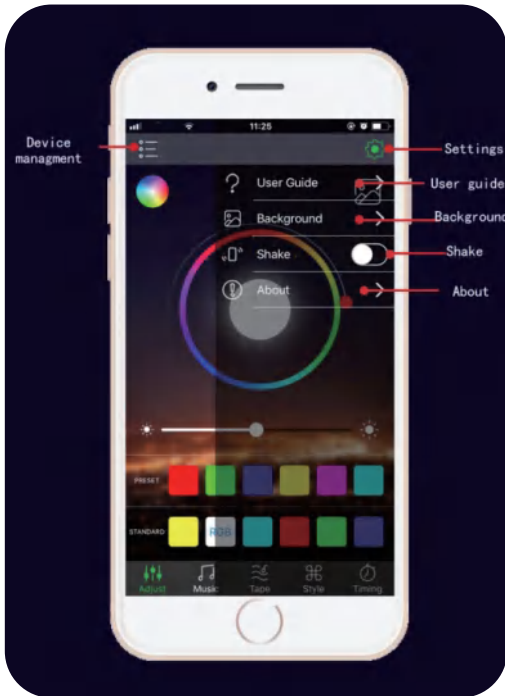
D. Patterns: Change RGB LED color by fixed model.



E. Schedules: Timers, auto ON/OFF.



F. Setting: Shake: Change RGB LED color by shake the phone;
Music Hop: RGB LED color changed by music.



Note:

- If you can't search your Bluetooth Light strip device or can't connect with the Bluetooth lamp device for a long time, please enter your phone 'setting' and connect again;
- If you can't connect to the device for a long time or other abnormal ,please close the APP ,then try to restart;
- Do not put the Light strip in closed lampshade;
- Do not put the Light strip in the place which is humid or has water;
- Keep using it under the power supply of 12V DC;
- This Light strip is not a toy and keep it untouchable to children;
- Do not put the Light strip on high-temperature surface;
- Do not open any sealing device for safety and according to Warranty Terms;

Frequently Asked Questions

- Can I cut the LED Strip?

a: Yes it can be cut to fit any size Reference Page 5.

- Can I dim the LED Strip brightness?

a: Yes you can, use the remote to dim the brightness.

- What are the dimensions of the Poly-carbonate channel?

a: 1 Foot Pieces-0.5" Wide x 0.25" Tall x 0.7mm Thick

- Will the LED Strip work with any power source?

a: No, you must use a 12v power source.

FCC Statement:

This device complies with Part 15 of the FCC Rules. Operation is subject to the following two conditions:

This device may not cause harmful interference, and

This device must accept any interference received, including interference that may cause undesired operation.

Warning: Changes or modifications not expressly approved by the party responsible for compliance could void the user's authority to operate the equipment.

NOTE: This equipment has been tested and found to comply with the limits for a Class B digital device, pursuant to Part 15 of the FCC Rules. These limits are designed to provide reasonable protection against harmful interference in a residential installation. This equipment generates uses and can radiate radio frequency energy and, if not installed and used in accordance with the instructions, may cause harmful interference to radio communications. However, there is no guarantee that interference will not occur in a particular installation. If this equipment does cause harmful interference to radio or television reception, which can be determined by turning the equipment off and on, the user is encouraged to try to correct the interference by one or more of the following measures:

Reorient or relocate the receiving antenna.

Increase the separation between the equipment and receiver.

Connect the equipment into an outlet on a circuit different from that to which the receiver is connected.

Consult the dealer or an experienced radio/TV technician for help.

RF warning statement:

The device has been evaluated to meet general RF exposure requirement. The device can be used in portable exposure condition without restriction.

KOHREE

Add Kohree to your RVing