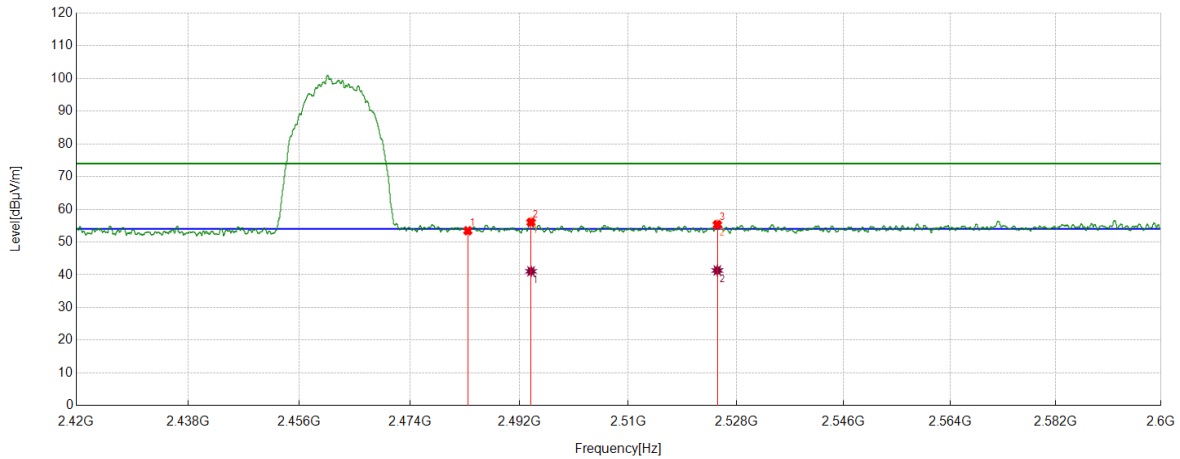


Test Mode	Channel	Polarization	Verdict
11B	HCH	Horizontal	PASS



PK Result:

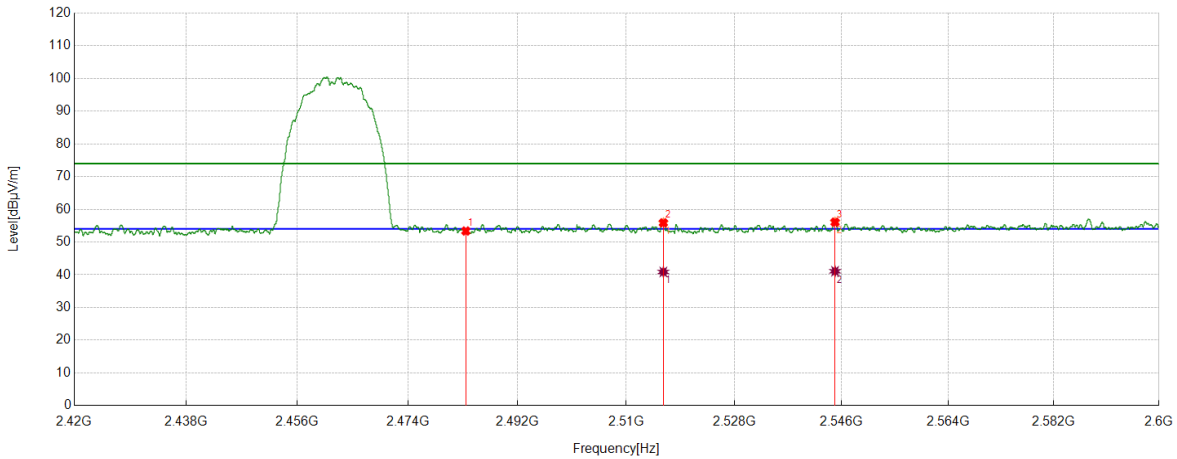
No.	Frequency	Reading Level	Correct Factor	Result	Limit	Margin	Remark
	[MHz]	[dBuV]	[dB/m]	[dBuV/m]	[dBuV/m]	[dB]	
1	2483.5000	42.81	10.64	53.45	74.00	-20.55	Horizontal
2	2493.8992	45.30	10.76	56.06	74.00	-17.94	Horizontal
3	2524.8181	44.16	11.16	55.32	74.00	-18.68	Horizontal

AV Result:

No.	Frequency	Reading Level	Correct Factor	Result	Limit	Margin	Remark
	[MHz]	[dBuV]	[dB/m]	[dBuV/m]	[dBuV/m]	[dB]	
1	2493.8992	30.30	10.76	41.06	54.00	-12.94	Horizontal
2	2524.8181	30.16	11.16	41.32	54.00	-12.68	Horizontal

- Note: 1. Peak detector: RBW: 1 MHz, VBW: 3 MHz.
 2. Average detector: RBW: 1 MHz, VBW: 1/T MHz(refer to clause 7.1.).
 3. Measurement = Reading Level + Correct Factor,
 Correct Factor = Antenna Factor + Loss (Cable + Attenuator) – Amplifier Gain.
 4. Only the worst case emission was recorded, if it complies with the limit, the other emissions deemed to comply with the limit.

Test Mode	Channel	Polarization	Verdict
11B	HCH	Vertical	PASS



PK Result:

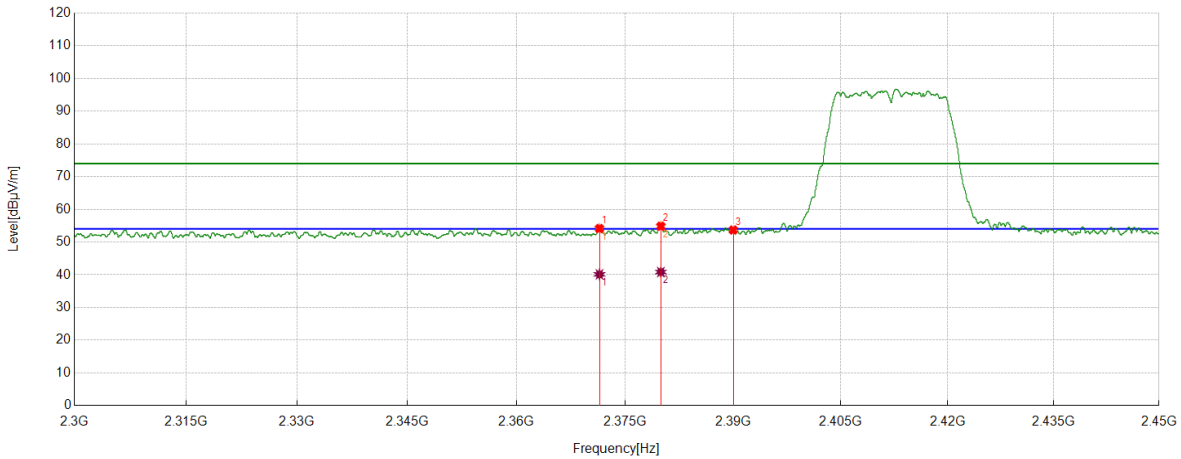
No.	Frequency	Reading Level	Correct Factor	Result	Limit	Margin	Remark
	[MHz]	[dBuV]	[dB/m]	[dBuV/m]	[dBuV/m]	[dB]	
1	2483.5000	42.74	10.64	53.38	74.00	-20.62	Vertical
2	2516.1545	44.83	11.04	55.87	74.00	-18.13	Vertical
3	2544.8906	44.92	11.15	56.07	74.00	-17.93	Vertical

AV Result:

No.	Frequency	Reading Level	Correct Factor	Result	Limit	Margin	Remark
	[MHz]	[dBuV]	[dB/m]	[dBuV/m]	[dBuV/m]	[dB]	
1	2516.1545	29.83	11.04	40.87	54.00	-13.13	Vertical
2	2544.8906	29.92	11.15	41.07	54.00	-12.93	Vertical

- Note: 1. Peak detector: RBW: 1 MHz, VBW: 3 MHz.
 2. Average detector: RBW: 1 MHz, VBW: 1/T MHz(refer to clause 7.1.).
 3. Measurement = Reading Level + Correct Factor,
 Correct Factor = Antenna Factor + Loss (Cable + Attenuator) – Amplifier Gain.
 4. Only the worst case emission was recorded, if it complies with the limit, the other emissions deemed to comply with the limit.

Test Mode	Channel	Polarization	Verdict
11G	LCH	Horizontal	PASS



PK Result:

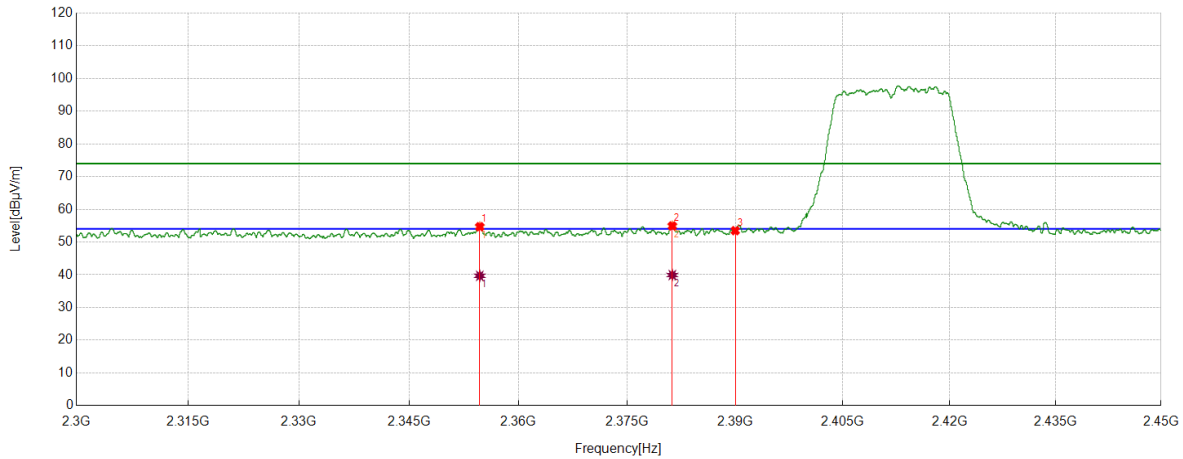
No.	Frequency	Reading Level	Correct Factor	Result	Limit	Margin	Remark
	[MHz]	[dBuV]	[dB/m]	[dBuV/m]	[dBuV/m]	[dB]	
1	2371.4464	43.98	10.15	54.13	74.00	-19.87	Horizontal
2	2379.9412	44.54	10.30	54.84	74.00	-19.16	Horizontal
3	2390.0000	43.33	10.35	53.68	74.00	-20.32	Horizontal

AV Result:

No.	Frequency	Reading Level	Correct Factor	Result	Limit	Margin	Remark
	[MHz]	[dBuV]	[dB/m]	[dBuV/m]	[dBuV/m]	[dB]	
1	2371.4464	29.98	10.15	40.13	54.00	-13.87	Horizontal
2	2379.9412	30.54	10.30	40.84	54.00	-13.16	Horizontal

- Note: 1. Peak detector: RBW: 1 MHz, VBW: 3 MHz.
 2. Average detector: RBW: 1 MHz, VBW: 1/T MHz(refer to clause 7.1.).
 3. Measurement = Reading Level + Correct Factor,
 Correct Factor = Antenna Factor + Loss (Cable + Attenuator) – Amplifier Gain.
 4. Only the worst case emission was recorded, if it complies with the limit, the other emissions deemed to comply with the limit.

Test Mode	Channel	Polarization	Verdict
11G	LCH	Vertical	PASS



PK Result:

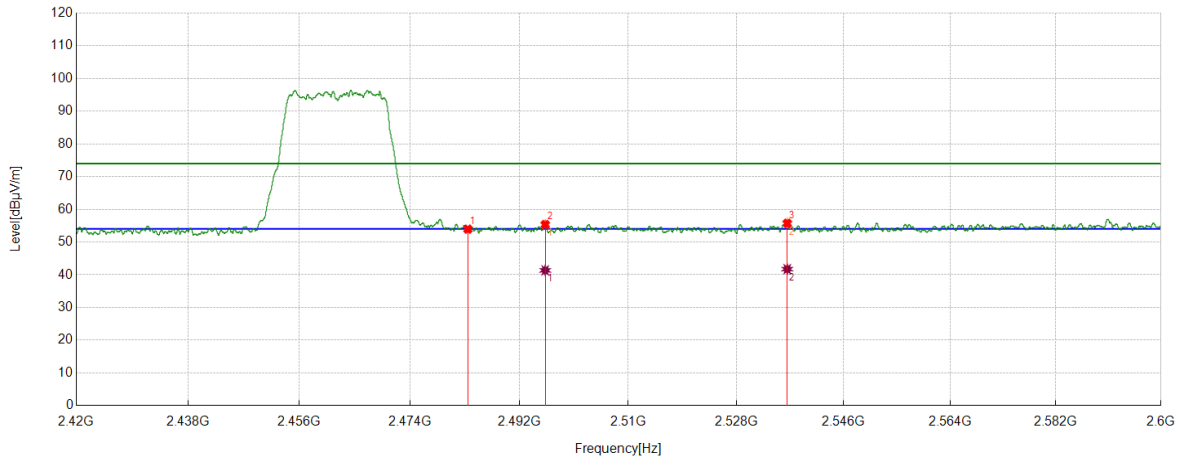
No.	Frequency	Reading Level	Correct Factor	Result	Limit	Margin	Remark
	[MHz]	[dBuV]	[dB/m]	[dBuV/m]	[dBuV/m]	[dB]	
1	2354.7006	44.78	9.90	54.68	74.00	-19.32	Vertical
2	2381.2539	44.61	10.31	54.92	74.00	-19.08	Vertical
3	2390.0000	43.13	10.35	53.48	74.00	-20.52	Vertical

AV Result:

No.	Frequency	Reading Level	Correct Factor	Result	Limit	Margin	Remark
	[MHz]	[dBuV]	[dB/m]	[dBuV/m]	[dBuV/m]	[dB]	
1	2354.7006	29.78	9.90	39.68	54.00	-14.32	Vertical
2	2381.2539	29.61	10.31	39.92	54.00	-14.08	Vertical

- Note: 1. Peak detector: RBW: 1 MHz, VBW: 3 MHz.
 2. Average detector: RBW: 1 MHz, VBW: 1/T MHz(refer to clause 7.1.).
 3. Measurement = Reading Level + Correct Factor,
 Correct Factor = Antenna Factor + Loss (Cable + Attenuator) – Amplifier Gain.
 4. Only the worst case emission was recorded, if it complies with the limit, the other emissions deemed to comply with the limit.

Test Mode	Channel	Polarization	Verdict
11G	HCH	Horizontal	PASS



PK Result:

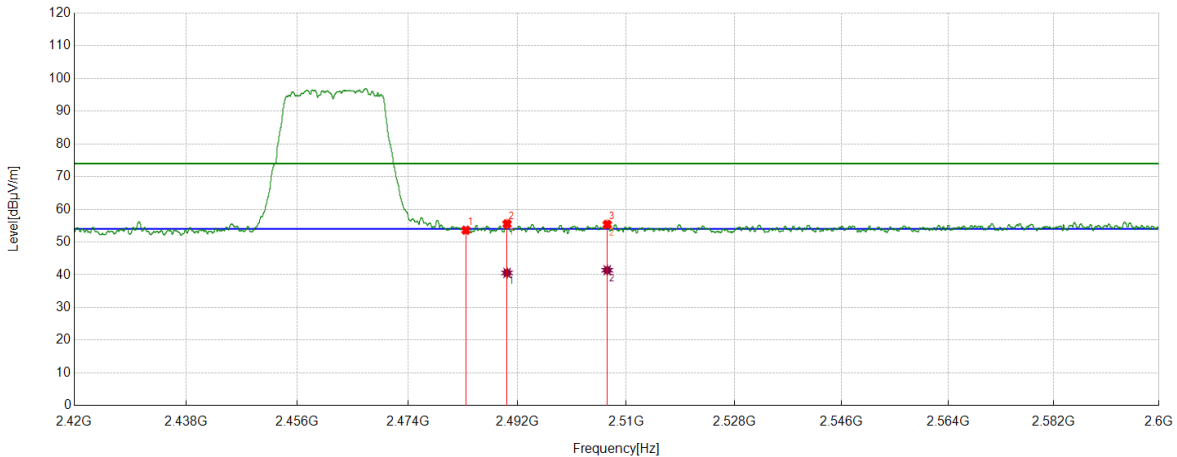
No.	Frequency	Reading Level	Correct Factor	Result	Limit	Margin	Remark
	[MHz]	[dBuV]	[dB/m]	[dBuV/m]	[dBuV/m]	[dB]	
1	2483.5000	43.31	10.64	53.95	74.00	-20.05	Horizontal
2	2496.2395	44.59	10.76	55.35	74.00	-18.65	Horizontal
3	2536.5196	44.43	11.30	55.73	74.00	-18.27	Horizontal

AV Result:

No.	Frequency	Reading Level	Correct Factor	Result	Limit	Margin	Remark
	[MHz]	[dBuV]	[dB/m]	[dBuV/m]	[dBuV/m]	[dB]	
1	2496.2395	30.59	10.76	41.35	54.00	-12.65	Horizontal
2	2536.5196	30.43	11.30	41.73	54.00	-12.27	Horizontal

- Note: 1. Peak detector: RBW: 1 MHz, VBW: 3 MHz.
 2. Average detector: RBW: 1 MHz, VBW: 1/T MHz(refer to clause 7.1.).
 3. Measurement = Reading Level + Correct Factor,
 Correct Factor = Antenna Factor + Loss (Cable + Attenuator) – Amplifier Gain.
 4. Only the worst case emission was recorded, if it complies with the limit, the other emissions deemed to comply with the limit.

Test Mode	Channel	Polarization	Verdict
11G	HCH	Vertical	PASS



PK Result:

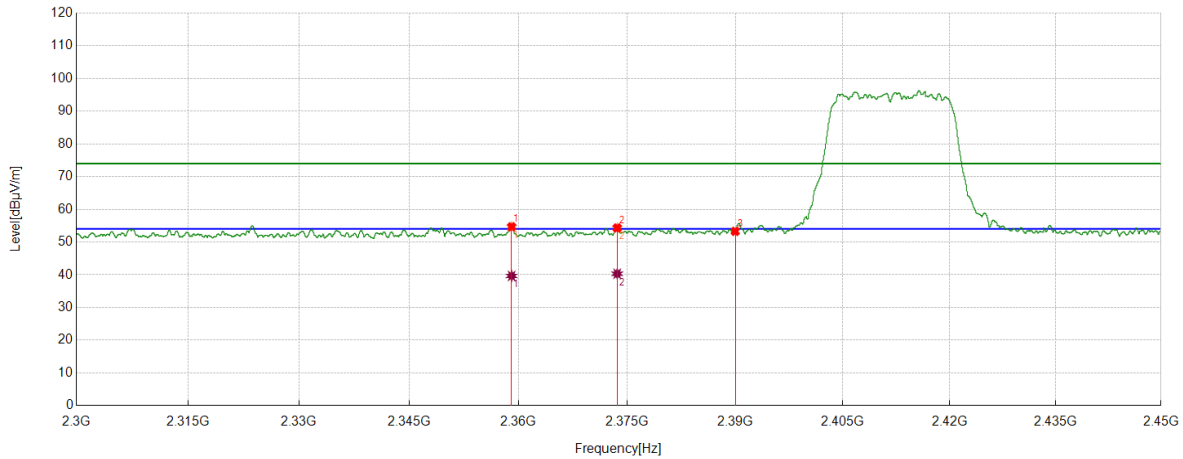
No.	Frequency	Reading Level	Correct Factor	Result	Limit	Margin	Remark
	[MHz]	[dBuV]	[dB/m]	[dBuV/m]	[dBuV/m]	[dB]	
1	2483.5000	42.99	10.64	53.63	74.00	-20.37	Vertical
2	2490.2763	44.78	10.79	55.57	74.00	-18.43	Vertical
3	2506.8384	44.41	10.98	55.39	74.00	-18.61	Vertical

AV Result:

No.	Frequency	Reading Level	Correct Factor	Result	Limit	Margin	Remark
	[MHz]	[dBuV]	[dB/m]	[dBuV/m]	[dBuV/m]	[dB]	
1	2490.2763	29.78	10.79	40.57	54.00	-13.43	Vertical
2	2506.8384	30.41	10.98	41.39	54.00	-12.61	Vertical

- Note: 1. Peak detector: RBW: 1 MHz, VBW: 3 MHz.
 2. Average detector: RBW: 1 MHz, VBW: 1/T MHz(refer to clause 7.1.).
 3. Measurement = Reading Level + Correct Factor,
 Correct Factor = Antenna Factor + Loss (Cable + Attenuator) – Amplifier Gain.
 4. Only the worst case emission was recorded, if it complies with the limit, the other emissions deemed to comply with the limit.

Test Mode	Channel	Polarization	Verdict
11N HT20	LCH	Horizontal	PASS



PK Result:

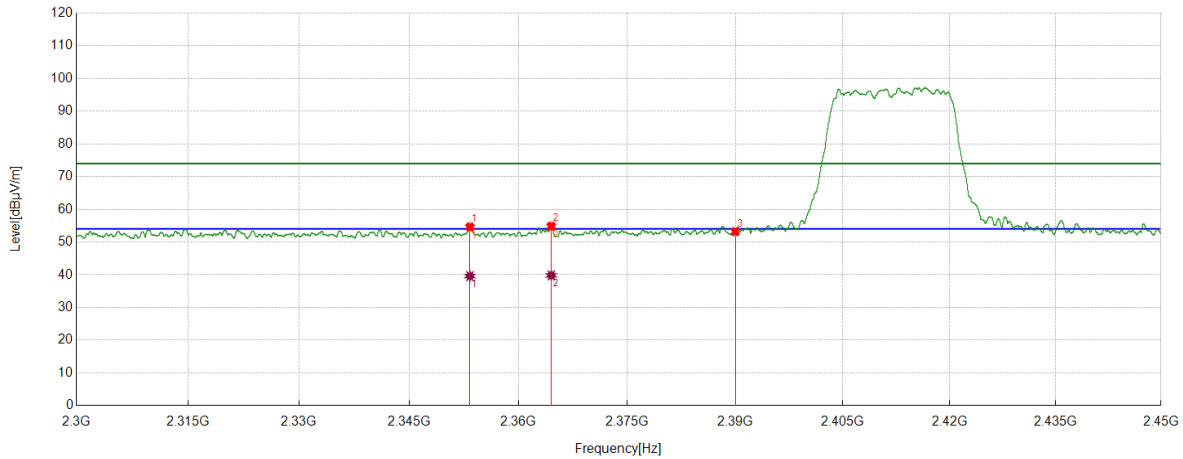
No.	Frequency	Reading Level	Correct Factor	Result	Limit	Margin	Remark
	[MHz]	[dBuV]	[dB/m]	[dBuV/m]	[dBuV/m]	[dB]	
1	2359.0699	44.75	9.90	54.65	74.00	-19.35	Horizontal
2	2373.6217	44.13	10.18	54.31	74.00	-19.69	Horizontal
3	2390.0000	42.92	10.35	53.27	74.00	-20.73	Horizontal

AV Result:

No.	Frequency	Reading Level	Correct Factor	Result	Limit	Margin	Remark
	[MHz]	[dBuV]	[dB/m]	[dBuV/m]	[dBuV/m]	[dB]	
1	2359.0699	29.75	9.90	39.65	54.00	-14.35	Horizontal
2	2373.6217	30.13	10.18	40.31	54.00	-13.69	Horizontal

- Note: 1. Peak detector: RBW: 1 MHz, VBW: 3 MHz.
 2. Average detector: RBW: 1 MHz, VBW: 1/T MHz(refer to clause 7.1.).
 3. Measurement = Reading Level + Correct Factor,
 Correct Factor = Antenna Factor + Loss (Cable + Attenuator) – Amplifier Gain.
 4. Only the worst case emission was recorded, if it complies with the limit, the other emissions deemed to comply with the limit.

Test Mode	Channel	Polarization	Verdict
11N HT20	LCH	Vertical	PASS



PK Result:

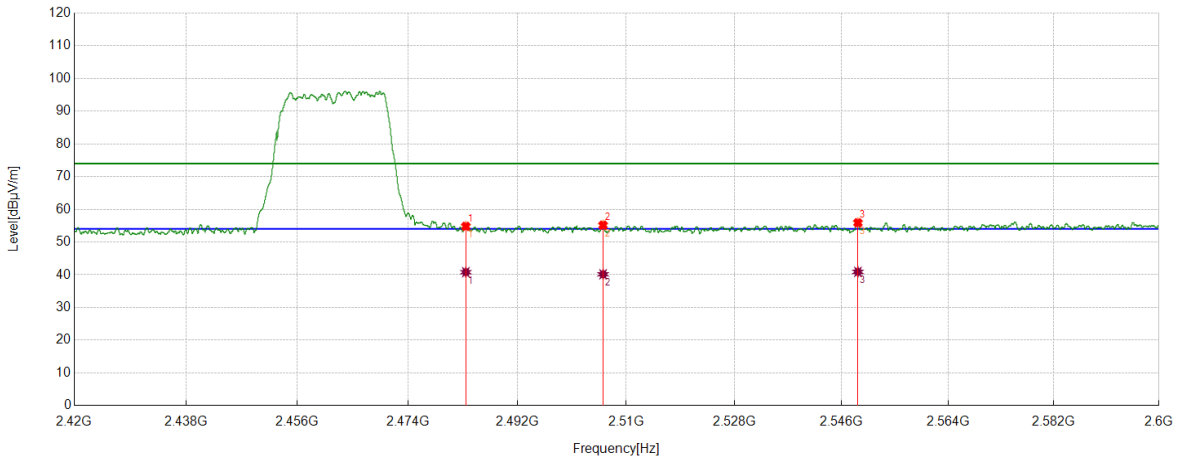
No.	Frequency	Reading Level	Correct Factor	Result	Limit	Margin	Remark
	[MHz]	[dBuV]	[dB/m]	[dBuV/m]	[dBuV/m]	[dB]	
1	2353.3504	44.68	9.90	54.58	74.00	-19.42	Vertical
2	2364.5268	44.83	10.00	54.83	74.00	-19.17	Vertical
3	2390.0000	42.83	10.35	53.18	74.00	-20.82	Vertical

AV Result:

No.	Frequency	Reading Level	Correct Factor	Result	Limit	Margin	Remark
	[MHz]	[dBuV]	[dB/m]	[dBuV/m]	[dBuV/m]	[dB]	
1	2353.3504	29.68	9.90	39.58	54.00	-14.42	Vertical
2	2364.5268	29.83	10.00	39.83	54.00	-14.17	Vertical

- Note: 1. Peak detector: RBW: 1 MHz, VBW: 3 MHz.
 2. Average detector: RBW: 1 MHz, VBW: 1/T MHz(refer to clause 7.1.).
 3. Measurement = Reading Level + Correct Factor,
 Correct Factor = Antenna Factor + Loss (Cable + Attenuator) – Amplifier Gain.
 4. Only the worst case emission was recorded, if it complies with the limit, the other emissions deemed to comply with the limit.

Test Mode	Channel	Polarization	Verdict
11N HT20	HCH	Horizontal	PASS



PK Result:

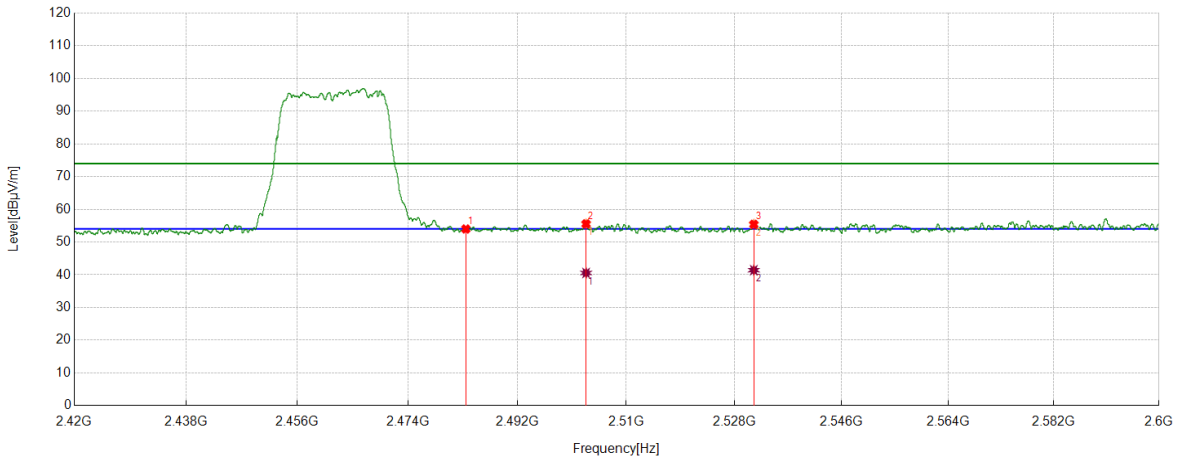
No.	Frequency	Reading Level	Correct Factor	Result	Limit	Margin	Remark
	[MHz]	[dBuV]	[dB/m]	[dBuV/m]	[dBuV/m]	[dB]	
1	2483.5000	44.16	10.64	54.80	74.00	-19.20	Horizontal
2	2506.1408	44.20	10.95	55.15	74.00	-18.85	Horizontal
3	2548.7386	44.85	11.05	55.90	74.00	-18.10	Horizontal

AV Result:

No.	Frequency	Reading Level	Correct Factor	Result	Limit	Margin	Remark
	[MHz]	[dBuV]	[dB/m]	[dBuV/m]	[dBuV/m]	[dB]	
1	2483.5000	30.16	10.64	40.80	54.00	-13.20	Horizontal
2	2506.1408	29.20	10.95	40.15	54.00	-13.85	Horizontal
3	2548.7386	29.85	11.05	40.90	54.00	-13.10	Horizontal

- Note: 1. Peak detector: RBW: 1 MHz, VBW: 3 MHz.
 2. Average detector: RBW: 1 MHz, VBW: 1/T MHz(refer to clause 7.1.).
 3. Measurement = Reading Level + Correct Factor,
 Correct Factor = Antenna Factor + Loss (Cable + Attenuator) – Amplifier Gain.
 4. Only the worst case emission was recorded, if it complies with the limit, the other emissions deemed to comply with the limit.

Test Mode	Channel	Polarization	Verdict
11N HT20	HCH	Vertical	PASS



PK Result:

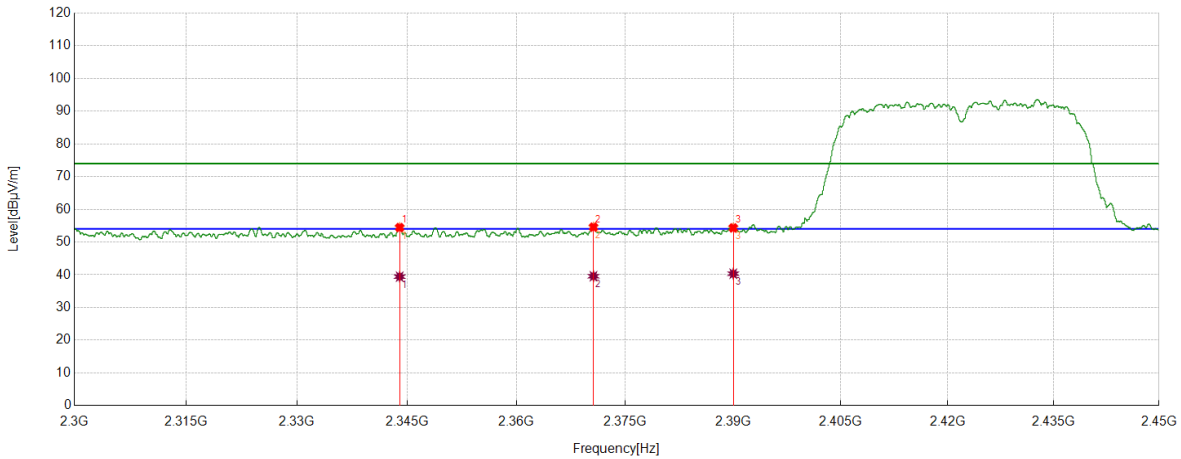
No.	Frequency	Reading Level	Correct Factor	Result	Limit	Margin	Remark
	[MHz]	[dBuV]	[dB/m]	[dBuV/m]	[dBuV/m]	[dB]	
1	2483.5000	43.35	10.64	53.99	74.00	-20.01	Vertical
2	2503.3279	44.69	10.86	55.55	74.00	-18.45	Vertical
3	2531.2539	44.08	11.33	55.41	74.00	-18.59	Vertical

AV Result:

No.	Frequency	Reading Level	Correct Factor	Result	Limit	Margin	Remark
	[MHz]	[dBuV]	[dB/m]	[dBuV/m]	[dBuV/m]	[dB]	
1	2503.3279	29.69	10.86	40.55	54.00	-13.45	Vertical
2	2531.2539	30.08	11.33	41.41	54.00	-12.59	Vertical

- Note: 1. Peak detector: RBW: 1 MHz, VBW: 3 MHz.
 2. Average detector: RBW: 1 MHz, VBW: 1/T MHz(refer to clause 7.1.).
 3. Measurement = Reading Level + Correct Factor,
 Correct Factor = Antenna Factor + Loss (Cable + Attenuator) – Amplifier Gain.
 4. Only the worst case emission was recorded, if it complies with the limit, the other emissions deemed to comply with the limit.

Test Mode	Channel	Polarization	Verdict
11N HT40	LCH	Horizontal	PASS



PK Result:

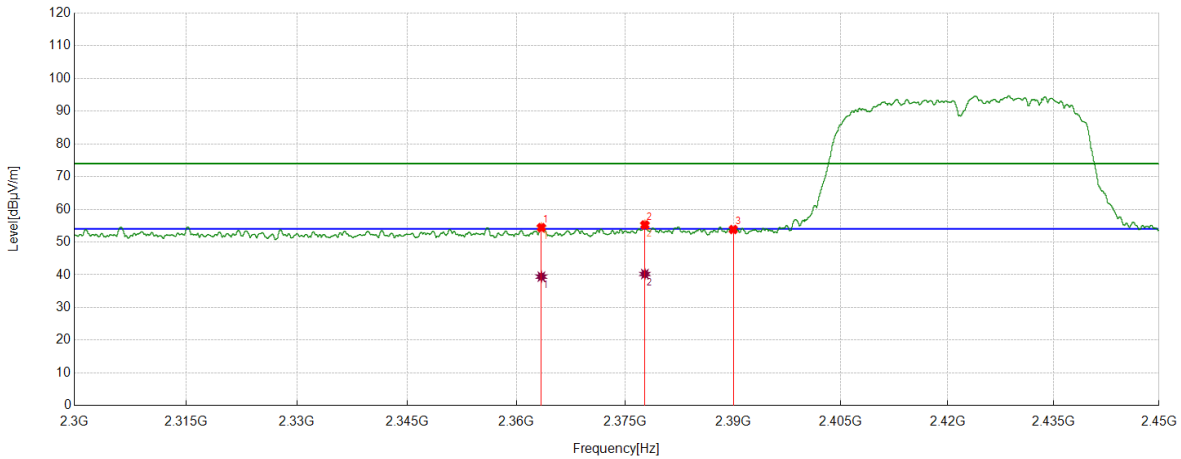
No.	Frequency	Reading Level	Correct Factor	Result	Limit	Margin	Remark
	[MHz]	[dBuV]	[dB/m]	[dBuV/m]	[dBuV/m]	[dB]	
1	2344.0118	44.56	9.87	54.43	74.00	-19.57	Horizontal
2	2370.6213	44.43	10.13	54.56	74.00	-19.44	Horizontal
3	2390.0000	43.98	10.35	54.33	74.00	-19.67	Horizontal

AV Result:

No.	Frequency	Reading Level	Correct Factor	Result	Limit	Margin	Remark
	[MHz]	[dBuV]	[dB/m]	[dBuV/m]	[dBuV/m]	[dB]	
1	2344.0118	29.56	9.87	39.43	54.00	-14.57	Horizontal
2	2370.6213	29.43	10.13	39.56	54.00	-14.44	Horizontal
3	2390.0000	29.98	10.35	40.33	54.00	-13.67	Horizontal

- Note: 1. Peak detector: RBW: 1 MHz, VBW: 3 MHz.
 2. Average detector: RBW: 1 MHz, VBW: 1/T MHz(refer to clause 7.1.).
 3. Measurement = Reading Level + Correct Factor,
 Correct Factor = Antenna Factor + Loss (Cable + Attenuator) – Amplifier Gain.
 4. Only the worst case emission was recorded, if it complies with the limit, the other emissions deemed to comply with the limit.

Test Mode	Channel	Polarization	Verdict
11N HT40	LCH	Vertical	PASS



PK Result:

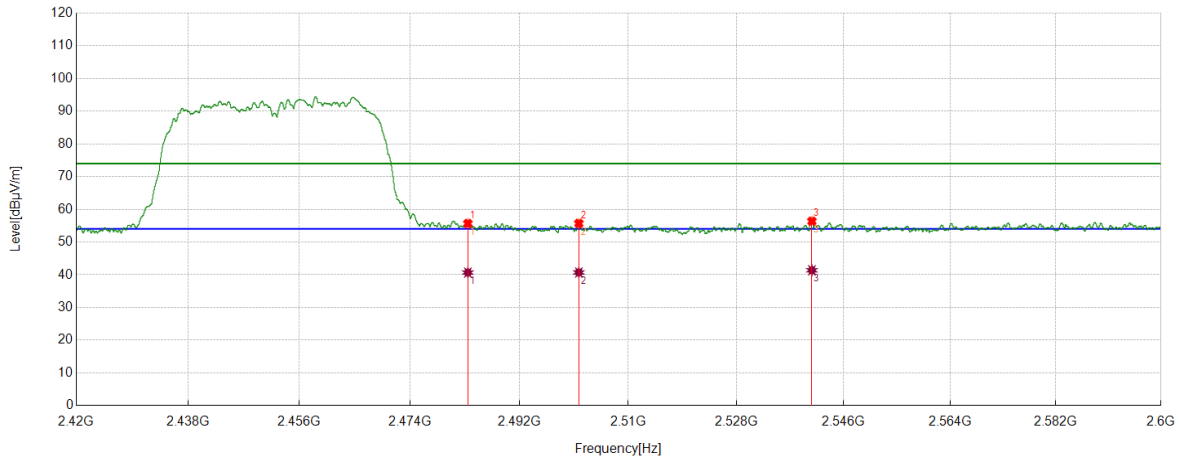
No.	Frequency	Reading Level	Correct Factor	Result	Limit	Margin	Remark
	[MHz]	[dBuV]	[dB/m]	[dBuV/m]	[dBuV/m]	[dB]	
1	2363.4392	44.45	9.97	54.42	74.00	-19.58	Vertical
2	2377.7285	44.98	10.25	55.23	74.00	-18.77	Vertical
3	2390.0000	43.48	10.35	53.83	74.00	-20.17	Vertical

AV Result:

No.	Frequency	Reading Level	Correct Factor	Result	Limit	Margin	Remark
	[MHz]	[dBuV]	[dB/m]	[dBuV/m]	[dBuV/m]	[dB]	
1	2363.4392	29.45	9.97	39.42	54.00	-14.58	Vertical
2	2377.7285	29.98	10.25	40.23	54.00	-13.77	Vertical

- Note: 1. Peak detector: RBW: 1 MHz, VBW: 3 MHz.
 2. Average detector: RBW: 1 MHz, VBW: 1/T MHz(refer to clause 7.1.).
 3. Measurement = Reading Level + Correct Factor,
 Correct Factor = Antenna Factor + Loss (Cable + Attenuator) – Amplifier Gain.
 4. Only the worst case emission was recorded, if it complies with the limit, the other emissions deemed to comply with the limit.

Test Mode	Channel	Polarization	Verdict
11N HT40	HCH	Horizontal	PASS



PK Result:

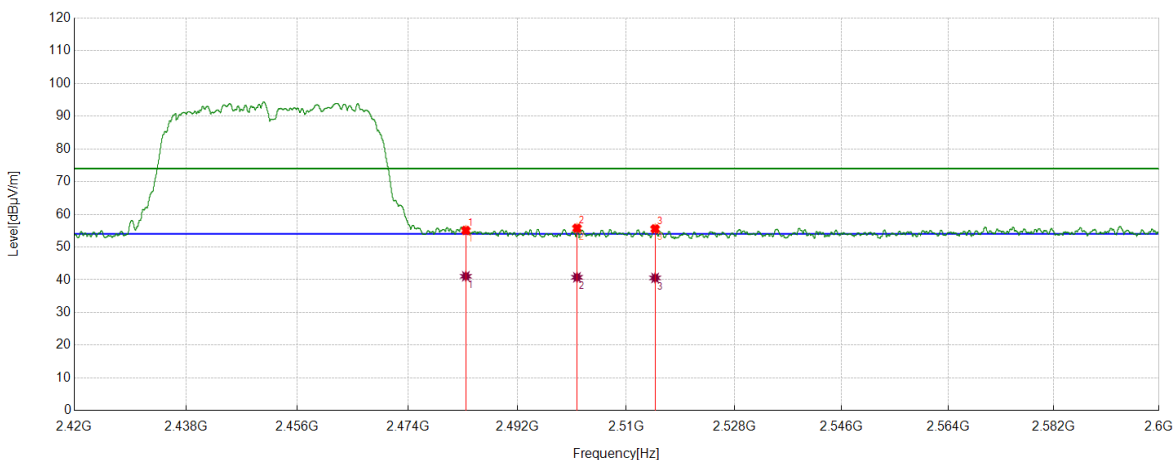
No.	Frequency	Reading Level	Correct Factor	Result	Limit	Margin	Remark
	[MHz]	[dBuV]	[dB/m]	[dBuV/m]	[dBuV/m]	[dB]	
1	2483.5000	45.04	10.64	55.68	74.00	-18.32	Horizontal
2	2501.7977	44.92	10.79	55.71	74.00	-18.29	Horizontal
3	2540.6601	45.11	11.27	56.38	74.00	-17.62	Horizontal

AV Result:

No.	Frequency	Reading Level	Correct Factor	Result	Limit	Margin	Remark
	[MHz]	[dBuV]	[dB/m]	[dBuV/m]	[dBuV/m]	[dB]	
1	2483.5000	30.04	10.64	40.68	54.00	-13.32	Horizontal
2	2501.7977	29.92	10.79	40.71	54.00	-13.29	Horizontal
3	2540.6601	30.11	11.27	41.38	54.00	-12.62	Horizontal

- Note: 1. Peak detector: RBW: 1 MHz, VBW: 3 MHz.
 2. Average detector: RBW: 1 MHz, VBW: 1/T MHz(refer to clause 7.1.).
 3. Measurement = Reading Level + Correct Factor,
 Correct Factor = Antenna Factor + Loss (Cable + Attenuator) – Amplifier Gain.
 4. Only the worst case emission was recorded, if it complies with the limit, the other emissions deemed to comply with the limit.

Test Mode	Channel	Polarization	Verdict
11N HT40	HCH	Vertical	PASS



PK Result:

No.	Frequency	Reading Level	Correct Factor	Result	Limit	Margin	Remark
	[MHz]	[dBuV]	[dB/m]	[dBuV/m]	[dBuV/m]	[dB]	
1	2483.5000	44.43	10.64	55.07	74.00	-18.93	Vertical
2	2501.8202	44.97	10.79	55.76	74.00	-18.24	Vertical
3	2514.7818	44.51	11.05	55.56	74.00	-18.44	Vertical

AV Result:

No.	Frequency	Reading Level	Correct Factor	Result	Limit	Margin	Remark
	[MHz]	[dBuV]	[dB/m]	[dBuV/m]	[dBuV/m]	[dB]	
1	2483.5000	30.43	10.64	41.07	54.00	-12.93	Vertical
2	2501.8202	29.97	10.79	40.76	54.00	-13.24	Vertical
3	2514.7818	29.51	11.05	40.56	54.00	-13.44	Vertical

- Note: 1. Peak detector: RBW: 1 MHz, VBW: 3 MHz.
 2. Average detector: RBW: 1 MHz, VBW: 1/T MHz(refer to clause 7.1.).
 3. Measurement = Reading Level + Correct Factor,
 Correct Factor = Antenna Factor + Loss (Cable + Attenuator) – Amplifier Gain.
 4. Only the worst case emission was recorded, if it complies with the limit, the other emissions deemed to comply with the limit.

8.4. SPURIOUS EMISSIONS

TEST RESULTS TABLE

1) For 1GHz~18GHz

Test Mode	Channel	Puw(dBm)	Verdict
11B	LCH	<Limit	PASS
	MCH	<Limit	PASS
	HCH	<Limit	PASS
11G	LCH	<Limit	PASS
	MCH	<Limit	PASS
	HCH	<Limit	PASS
11N HT20	LCH	<Limit	PASS
	MCH	<Limit	PASS
	HCH	<Limit	PASS
11N HT40	LCH	<Limit	PASS
	MCH	<Limit	PASS
	HCH	<Limit	PASS

2) For 9kHz~30MHz

Test Mode	Channel	Puw(dBm)	Verdict
11B	LCH	<Limit	PASS

Remark:

1) Through pre-testing all the test modes and test channels, but only the data of the worst case is included in this test report.

3) For 30MHz~1GHz

Test Mode	Channel	Puw(dBm)	Verdict
11B	LCH	<Limit	PASS

Remark:

1) Through pre-testing all the test modes and test channels, but only the data of the worst case is included in this test report.

4) For 18GHz~26.5GHz

Test Mode	Channel	Puw(dBm)	Verdict
11B	LCH	<Limit	PASS

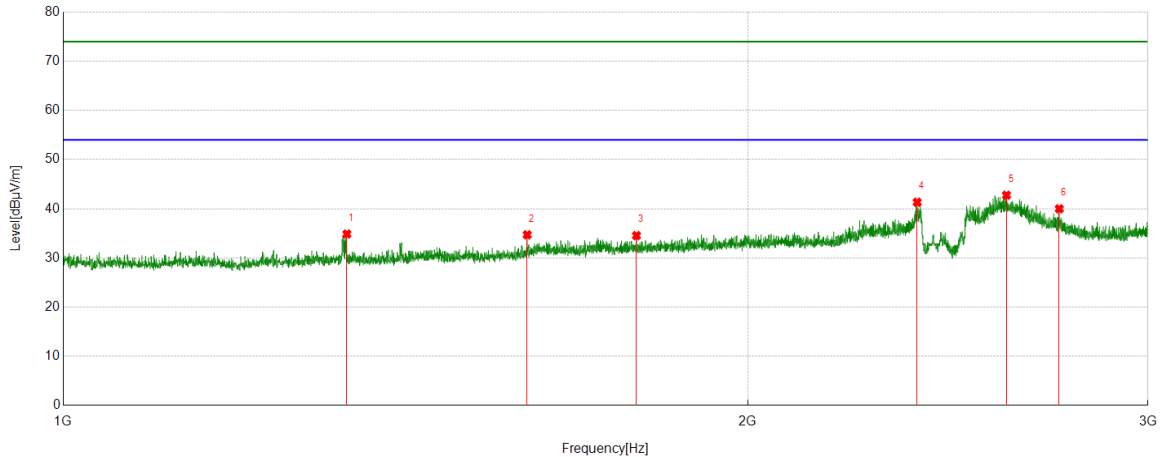
Remark:

1) Through pre-testing all the test modes and test channels, but only the data of the worst case is included in this test report.

Part 1: 1GHz~3GHz

HARMONICS AND SPURIOUS EMISSIONS

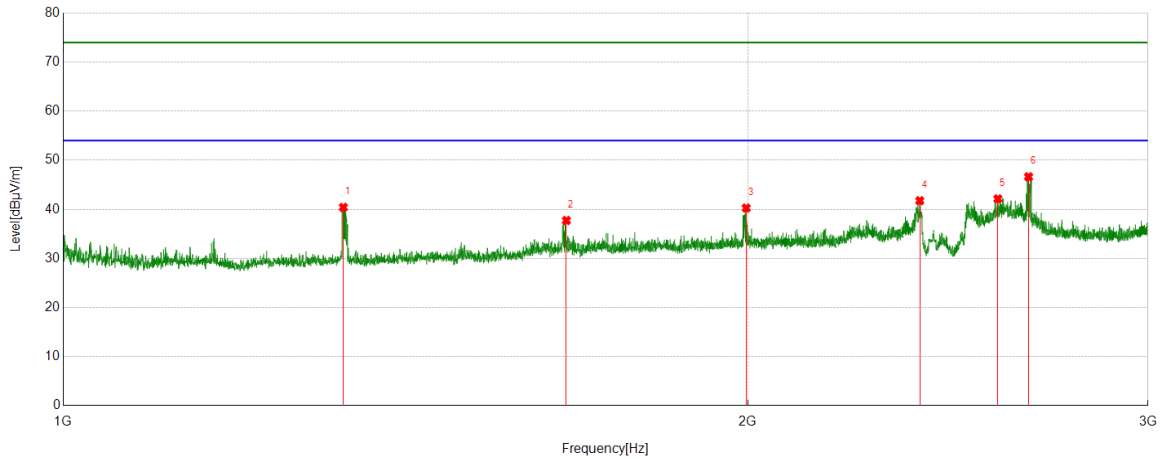
Test Mode	Channel	Polarization	Verdict
11B	LCH	Horizontal	PASS



No.	Frequency	Reading Level	Correct Factor	Result	Limit	Margin	Remark
	[MHz]	[dBuV]	[dB/m]	[dBuV/m]	[dBuV/m]	[dB]	
1	1332.7916	55.45	-20.59	34.86	74.00	-39.14	Horizontal
2	1599.825	53.42	-18.71	34.71	74.00	-39.29	Horizontal
3	1787.0984	52.49	-17.94	34.55	74.00	-39.45	Horizontal
4	2374.6718	55.66	-14.33	41.33	74.00	-32.67	Horizontal
5	2599.4499	55.99	-13.23	42.76	74.00	-31.24	Horizontal
6	2742.2178	52.73	-12.74	39.99	74.00	-34.01	Horizontal

- Note: 1. Measurement = Reading Level + Correct Factor,
Correct Factor = Antenna Factor + Loss (Cable + Filter) – Amplifier Gain.
2. If Peak Result complies with AV limit, AV Result is deemed to comply with AV limit.
3. Test setup: RBW: 1 MHz, VBW: 3 MHz, Sweep time: auto.
4. Peak: Peak detector.
5. For below 3GHz part, filter losses were only considered in the spurious frequency bands and the authorized band was not corrected for Band Reject Filter losses.
6. Only the worst case emission was recorded, if it complies with the limit, the other emissions deemed to comply with the limit.

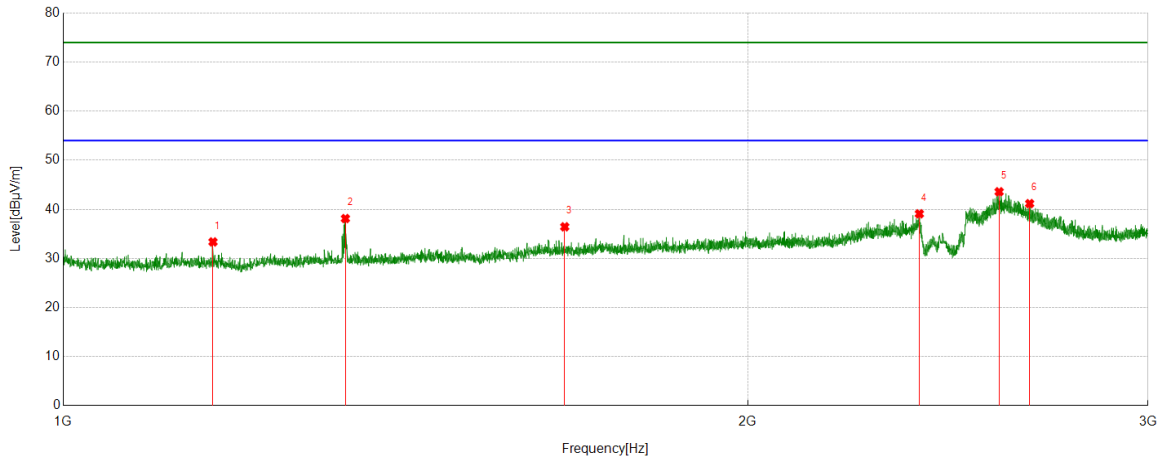
Test Mode	Channel	Polarization	Verdict
11B	LCH	Vertical	PASS



No.	Frequency	Reading Level	Correct Factor	Result	Limit	Margin	Remark
	[MHz]	[dBuV]	[dB/m]	[dBuV/m]	[dBuV/m]	[dB]	
1	1328.041	61.00	-20.60	40.40	74.00	-33.60	Vertical
2	1664.5831	55.96	-18.23	37.73	74.00	-36.27	Vertical
3	1997.1246	56.57	-16.30	40.27	74.00	-33.73	Vertical
4	2380.9226	55.98	-14.22	41.76	74.00	-32.24	Vertical
5	2576.9471	55.62	-13.48	42.14	74.00	-31.86	Vertical
6	2658.2073	59.87	-13.23	46.64	74.00	-27.36	Vertical

- Note: 1. Measurement = Reading Level + Correct Factor,
Correct Factor = Antenna Factor + Loss (Cable + Filter) – Amplifier Gain.
2. If Peak Result complies with AV limit, AV Result is deemed to comply with AV limit.
3. Test setup: RBW: 1 MHz, VBW: 3 MHz, Sweep time: auto.
4. Peak: Peak detector.
5. For below 3GHz part, filter losses were only considered in the spurious frequency bands and the authorized band was not corrected for Band Reject Filter losses.
6. Only the worst case emission was recorded, if it complies with the limit, the other emissions deemed to comply with the limit.

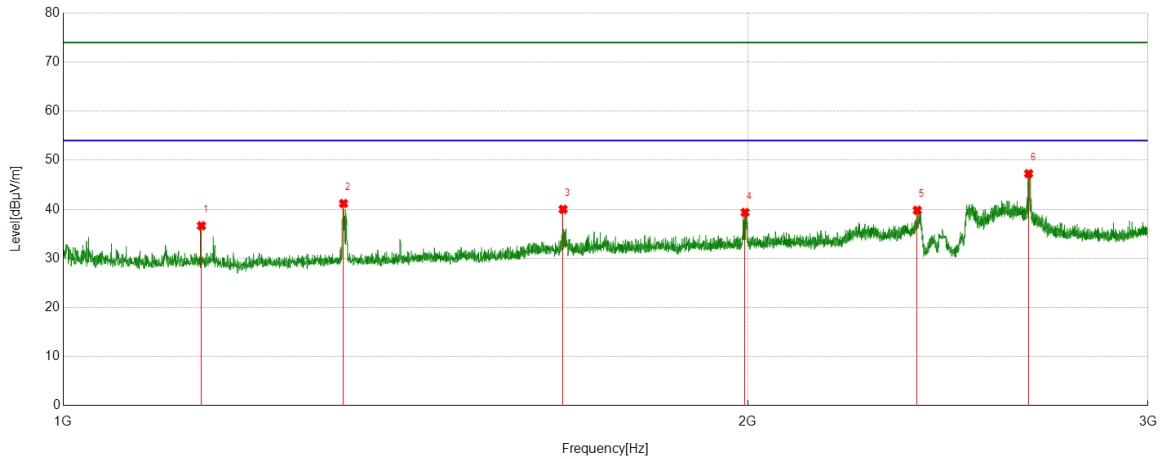
Test Mode	Channel	Polarization	Verdict
11B	MCH	Horizontal	PASS



No.	Frequency	Reading Level	Correct Factor	Result	Limit	Margin	Remark
	[MHz]	[dBuV]	[dB/m]	[dBuV/m]	[dBuV/m]	[dB]	
1	1163.7705	54.80	-21.44	33.36	74.00	-40.64	Horizontal
2	1330.7913	58.70	-20.58	38.12	74.00	-35.88	Horizontal
3	1661.8327	54.73	-18.29	36.44	74.00	-37.56	Horizontal
4	2379.9225	53.31	-14.22	39.09	74.00	-34.91	Horizontal
5	2580.1975	57.07	-13.49	43.58	74.00	-30.42	Horizontal
6	2661.2077	54.41	-13.24	41.17	74.00	-32.83	Horizontal

- Note: 1. Measurement = Reading Level + Correct Factor,
Correct Factor = Antenna Factor + Loss (Cable + Filter) – Amplifier Gain.
2. If Peak Result complies with AV limit, AV Result is deemed to comply with AV limit.
3. Test setup: RBW: 1 MHz, VBW: 3 MHz, Sweep time: auto.
4. Peak: Peak detector.
5. For below 3GHz part, filter losses were only considered in the spurious frequency bands and the authorized band was not corrected for Band Reject Filter losses.
6. Only the worst case emission was recorded, if it complies with the limit, the other emissions deemed to comply with the limit.

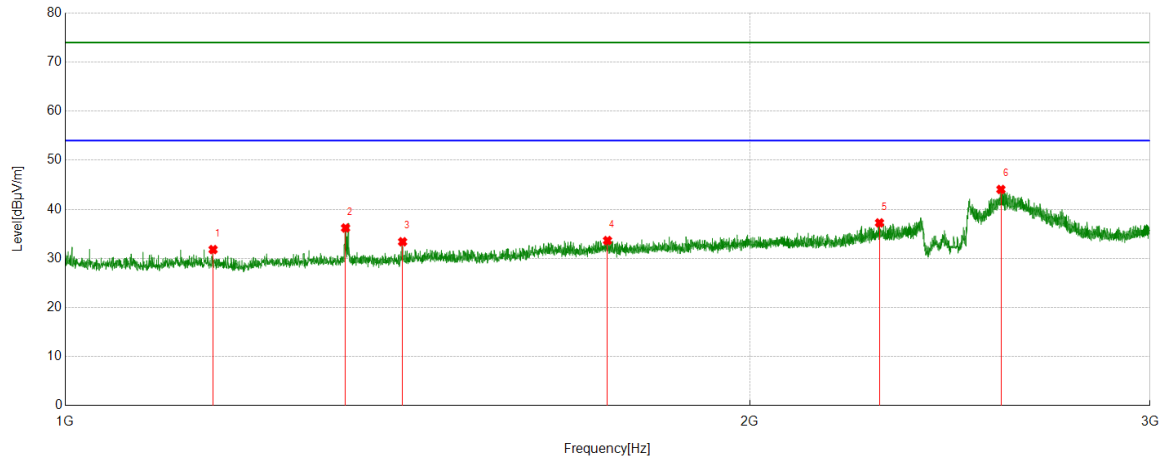
Test Mode	Channel	Polarization	Verdict
11B	MCH	Vertical	PASS



No.	Frequency	Reading Level	Correct Factor	Result	Limit	Margin	Remark
	[MHz]	[dBuV]	[dB/m]	[dBuV/m]	[dBuV/m]	[dB]	
1	1150.2688	57.97	-21.32	36.65	74.00	-37.35	Vertical
2	1328.291	61.78	-20.60	41.18	74.00	-32.82	Vertical
3	1659.0824	58.33	-18.33	40.00	74.00	-34.00	Vertical
4	1994.8744	55.68	-16.31	39.37	74.00	-34.63	Vertical
5	2374.9219	54.14	-14.33	39.81	74.00	-34.19	Vertical
6	2658.4573	60.50	-13.23	47.27	74.00	-26.73	Vertical

- Note: 1. Measurement = Reading Level + Correct Factor,
Correct Factor = Antenna Factor + Loss (Cable + Filter) – Amplifier Gain.
2. If Peak Result complies with AV limit, AV Result is deemed to comply with AV limit.
3. Test setup: RBW: 1 MHz, VBW: 3 MHz, Sweep time: auto.
4. Peak: Peak detector.
5. For below 3GHz part, filter losses were only considered in the spurious frequency bands and the authorized band was not corrected for Band Reject Filter losses.
6. Only the worst case emission was recorded, if it complies with the limit, the other emissions deemed to comply with the limit.

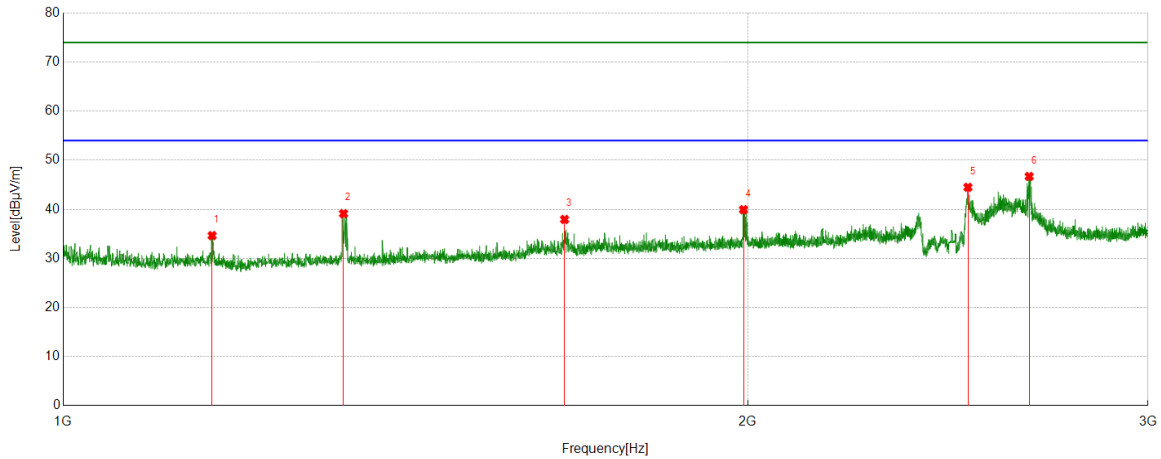
Test Mode	Channel	Polarization	Verdict
11B	HCH	Horizontal	PASS



No.	Frequency	Reading Level	Correct Factor	Result	Limit	Margin	Remark
	[MHz]	[dBuV]	[dB/m]	[dBuV/m]	[dBuV/m]	[dB]	
1	1161.5202	53.22	-21.42	31.80	74.00	-42.20	Horizontal
2	1328.291	56.80	-20.60	36.20	74.00	-37.80	Horizontal
3	1407.3009	53.63	-20.24	33.39	74.00	-40.61	Horizontal
4	1731.8415	51.59	-17.95	33.64	74.00	-40.36	Horizontal
5	2281.1601	52.47	-15.23	37.24	74.00	-36.76	Horizontal
6	2579.6975	57.54	-13.49	44.05	74.00	-29.95	Horizontal

- Note: 1. Measurement = Reading Level + Correct Factor,
Correct Factor = Antenna Factor + Loss (Cable + Filter) – Amplifier Gain.
2. If Peak Result complies with AV limit, AV Result is deemed to comply with AV limit.
3. Test setup: RBW: 1 MHz, VBW: 3 MHz, Sweep time: auto.
4. Peak: Peak detector.
5. For below 3GHz part, filter losses were only considered in the spurious frequency bands and the authorized band was not corrected for Band Reject Filter losses.
6. Only the worst case emission was recorded, if it complies with the limit, the other emissions deemed to comply with the limit.

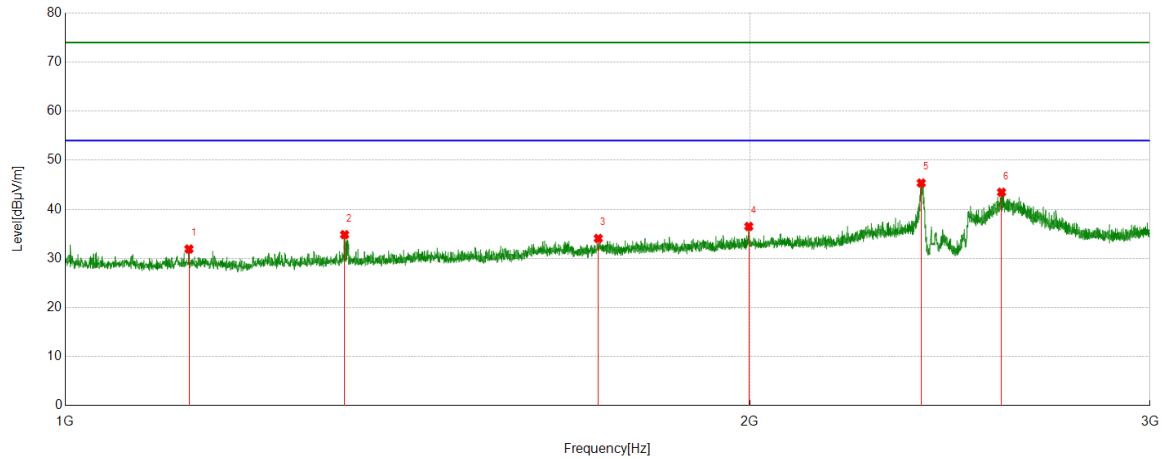
Test Mode	Channel	Polarization	Verdict
11B	HCH	Vertical	PASS



No.	Frequency	Reading Level	Correct Factor	Result	Limit	Margin	Remark
	[MHz]	[dBuV]	[dB/m]	[dBuV/m]	[dBuV/m]	[dB]	
1	1162.7703	56.08	-21.43	34.65	74.00	-39.35	Vertical
2	1328.291	59.72	-20.60	39.12	74.00	-34.88	Vertical
3	1661.5827	56.24	-18.30	37.94	74.00	-36.06	Vertical
4	1991.624	56.26	-16.33	39.93	74.00	-34.07	Vertical
5	2499.9375	57.91	-13.42	44.49	74.00	-29.51	Vertical
6	2659.9575	59.93	-13.23	46.70	74.00	-27.30	Vertical

- Note: 1. Measurement = Reading Level + Correct Factor,
Correct Factor = Antenna Factor + Loss (Cable + Filter) – Amplifier Gain.
2. If Peak Result complies with AV limit, AV Result is deemed to comply with AV limit.
3. Test setup: RBW: 1 MHz, VBW: 3 MHz, Sweep time: auto.
4. Peak: Peak detector.
5. For below 3GHz part, filter losses were only considered in the spurious frequency bands and the authorized band was not corrected for Band Reject Filter losses.
6. Only the worst case emission was recorded, if it complies with the limit, the other emissions deemed to comply with the limit.

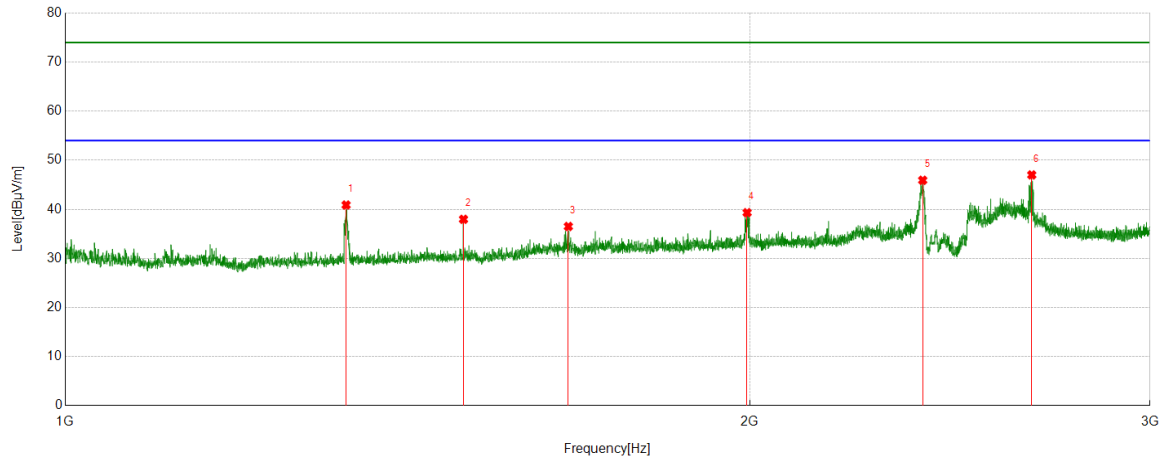
Test Mode	Channel	Polarization	Verdict
11G	LCH	Horizontal	PASS



No.	Frequency	Reading Level	Correct Factor	Result	Limit	Margin	Remark
	[MHz]	[dBuV]	[dB/m]	[dBuV/m]	[dBuV/m]	[dB]	
1	1133.5167	53.38	-21.47	31.91	74.00	-42.09	Horizontal
2	1327.0409	55.46	-20.62	34.84	74.00	-39.16	Horizontal
3	1715.8395	52.11	-18.04	34.07	74.00	-39.93	Horizontal
4	1998.3748	52.81	-16.30	36.51	74.00	-37.49	Horizontal
5	2379.6725	59.59	-14.23	45.36	74.00	-28.64	Horizontal
6	2581.1976	56.95	-13.48	43.47	74.00	-30.53	Horizontal

- Note: 1. Measurement = Reading Level + Correct Factor,
Correct Factor = Antenna Factor + Loss (Cable + Filter) – Amplifier Gain.
2. If Peak Result complies with AV limit, AV Result is deemed to comply with AV limit.
3. Test setup: RBW: 1 MHz, VBW: 3 MHz, Sweep time: auto.
4. Peak: Peak detector.
5. For below 3GHz part, filter losses were only considered in the spurious frequency bands and the authorized band was not corrected for Band Reject Filter losses.
6. Only the worst case emission was recorded, if it complies with the limit, the other emissions deemed to comply with the limit.

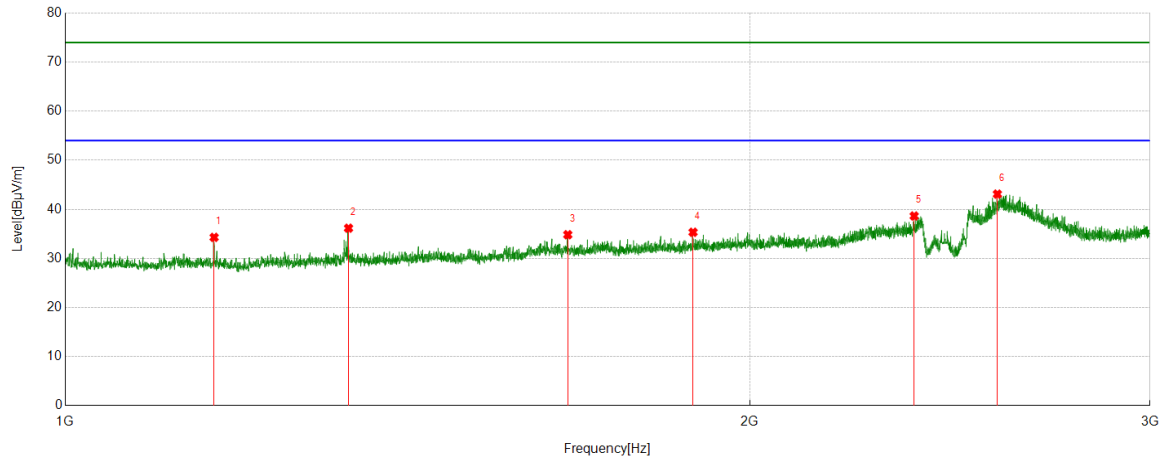
Test Mode	Channel	Polarization	Verdict
11G	LCH	Vertical	PASS



No.	Frequency	Reading Level	Correct Factor	Result	Limit	Margin	Remark
	[MHz]	[dBuV]	[dB/m]	[dBuV/m]	[dBuV/m]	[dB]	
1	1329.0411	61.47	-20.59	40.88	74.00	-33.12	Vertical
2	1496.8121	57.71	-19.74	37.97	74.00	-36.03	Vertical
3	1664.5831	54.74	-18.23	36.51	74.00	-37.49	Vertical
4	1994.8744	55.63	-16.31	39.32	74.00	-34.68	Vertical
5	2383.1729	60.15	-14.23	45.92	74.00	-28.08	Vertical
6	2661.4577	60.24	-13.23	47.01	74.00	-26.99	Vertical

- Note: 1. Measurement = Reading Level + Correct Factor,
Correct Factor = Antenna Factor + Loss (Cable + Filter) – Amplifier Gain.
2. If Peak Result complies with AV limit, AV Result is deemed to comply with AV limit.
3. Test setup: RBW: 1 MHz, VBW: 3 MHz, Sweep time: auto.
4. Peak: Peak detector.
5. For below 3GHz part, filter losses were only considered in the spurious frequency bands and the authorized band was not corrected for Band Reject Filter losses.
6. Only the worst case emission was recorded, if it complies with the limit, the other emissions deemed to comply with the limit.

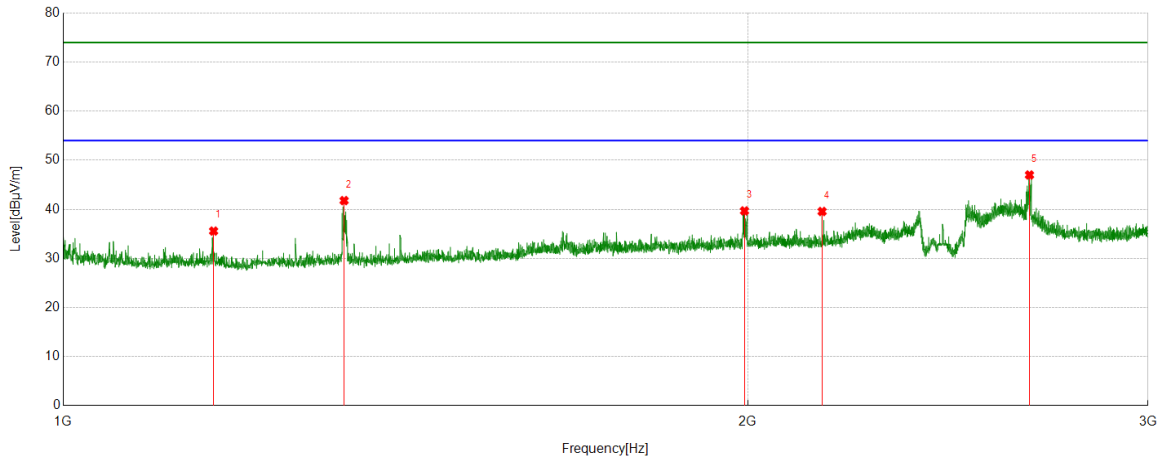
Test Mode	Channel	Polarization	Verdict
11G	MCH	Horizontal	PASS



No.	Frequency	Reading Level	Correct Factor	Result	Limit	Margin	Remark
	[MHz]	[dBuV]	[dB/m]	[dBuV/m]	[dBuV/m]	[dB]	
1	1162.7703	55.72	-21.43	34.29	74.00	-39.71	Horizontal
2	1332.2915	56.75	-20.59	36.16	74.00	-37.84	Horizontal
3	1663.5829	53.08	-18.25	34.83	74.00	-39.17	Horizontal
4	1888.6111	52.42	-17.09	35.33	74.00	-38.67	Horizontal
5	2362.6703	53.34	-14.70	38.64	74.00	-35.36	Horizontal
6	2570.4463	56.56	-13.46	43.10	74.00	-30.90	Horizontal

- Note: 1. Measurement = Reading Level + Correct Factor,
Correct Factor = Antenna Factor + Loss (Cable + Filter) – Amplifier Gain.
2. If Peak Result complies with AV limit, AV Result is deemed to comply with AV limit.
3. Test setup: RBW: 1 MHz, VBW: 3 MHz, Sweep time: auto.
4. Peak: Peak detector.
5. For below 3GHz part, filter losses were only considered in the spurious frequency bands and the authorized band was not corrected for Band Reject Filter losses.
6. Only the worst case emission was recorded, if it complies with the limit, the other emissions deemed to comply with the limit.

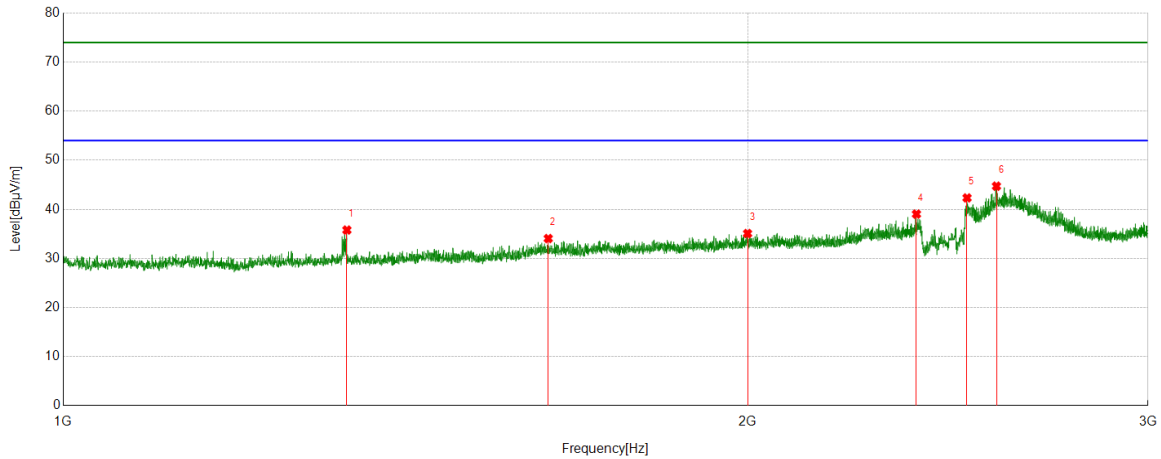
Test Mode	Channel	Polarization	Verdict
11G	MCH	Vertical	PASS



No.	Frequency	Reading Level	Correct Factor	Result	Limit	Margin	Remark
	[MHz]	[dBuV]	[dB/m]	[dBuV/m]	[dBuV/m]	[dB]	
1	1164.5206	57.02	-21.45	35.57	74.00	-38.43	Vertical
2	1329.0411	62.37	-20.59	41.78	74.00	-32.22	Vertical
3	1993.6242	56.00	-16.32	39.68	74.00	-34.32	Vertical
4	2156.6446	55.43	-15.87	39.56	74.00	-34.44	Vertical
5	2660.7076	60.23	-13.23	47.00	74.00	-27.00	Vertical

- Note: 1. Measurement = Reading Level + Correct Factor,
Correct Factor = Antenna Factor + Loss (Cable + Filter) – Amplifier Gain.
2. If Peak Result complies with AV limit, AV Result is deemed to comply with AV limit.
3. Test setup: RBW: 1 MHz, VBW: 3 MHz, Sweep time: auto.
4. Peak: Peak detector.
5. For below 3GHz part, filter losses were only considered in the spurious frequency bands and the authorized band was not corrected for Band Reject Filter losses.
6. Only the worst case emission was recorded, if it complies with the limit, the other emissions deemed to comply with the limit.

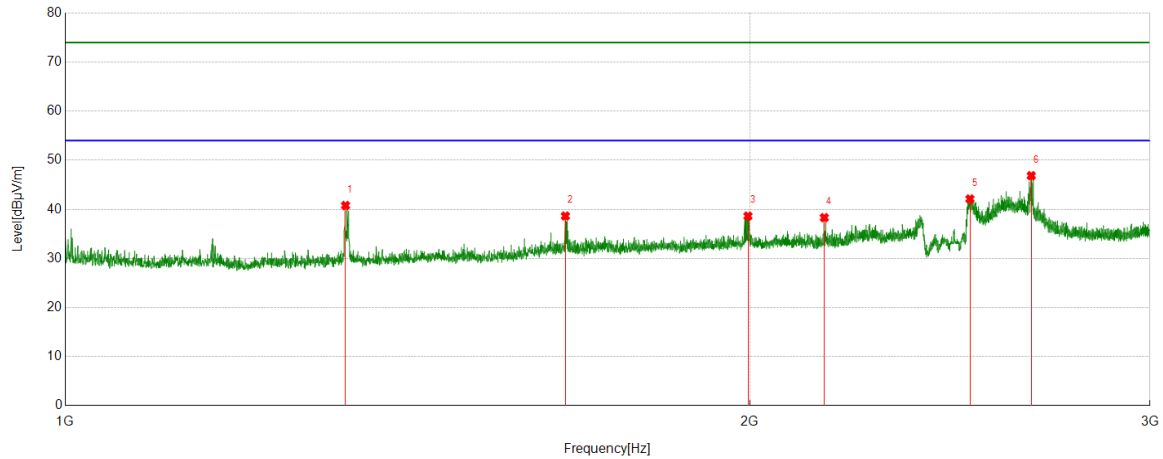
Test Mode	Channel	Polarization	Verdict
11G	HCH	Horizontal	PASS



No.	Frequency	Reading Level	Correct Factor	Result	Limit	Margin	Remark
	[MHz]	[dBuV]	[dB/m]	[dBuV/m]	[dBuV/m]	[dB]	
1	1332.7916	56.37	-20.59	35.78	74.00	-38.22	Horizontal
2	1634.3293	52.50	-18.45	34.05	74.00	-39.95	Horizontal
3	1999.875	51.35	-16.28	35.07	74.00	-38.93	Horizontal
4	2372.9216	53.40	-14.37	39.03	74.00	-34.97	Horizontal
5	2497.6872	55.76	-13.43	42.33	74.00	-31.67	Horizontal
6	2573.1966	58.19	-13.47	44.72	74.00	-29.28	Horizontal

- Note: 1. Measurement = Reading Level + Correct Factor,
Correct Factor = Antenna Factor + Loss (Cable + Filter) – Amplifier Gain.
2. If Peak Result complies with AV limit, AV Result is deemed to comply with AV limit.
3. Test setup: RBW: 1 MHz, VBW: 3 MHz, Sweep time: auto.
4. Peak: Peak detector.
5. For below 3GHz part, filter losses were only considered in the spurious frequency bands and the authorized band was not corrected for Band Reject Filter losses.
6. Only the worst case emission was recorded, if it complies with the limit, the other emissions deemed to comply with the limit.

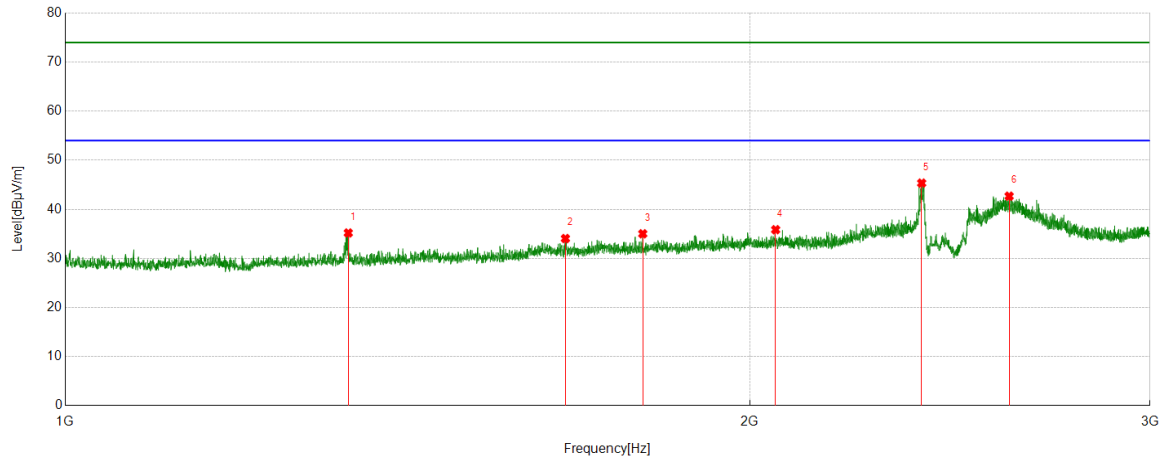
Test Mode	Channel	Polarization	Verdict
11G	HCH	Vertical	PASS



No.	Frequency	Reading Level	Correct Factor	Result	Limit	Margin	Remark
	[MHz]	[dBuV]	[dB/m]	[dBuV/m]	[dBuV/m]	[dB]	
1	1328.291	61.38	-20.60	40.78	74.00	-33.22	Vertical
2	1659.5824	56.97	-18.33	38.64	74.00	-35.36	Vertical
3	1996.6246	54.93	-16.30	38.63	74.00	-35.37	Vertical
4	2157.1446	54.20	-15.89	38.31	74.00	-35.69	Vertical
5	2499.9375	55.53	-13.42	42.11	74.00	-31.89	Vertical
6	2660.2075	60.08	-13.23	46.85	74.00	-27.15	Vertical

- Note: 1. Measurement = Reading Level + Correct Factor,
Correct Factor = Antenna Factor + Loss (Cable + Filter) – Amplifier Gain.
2. If Peak Result complies with AV limit, AV Result is deemed to comply with AV limit.
3. Test setup: RBW: 1 MHz, VBW: 3 MHz, Sweep time: auto.
4. Peak: Peak detector.
5. For below 3GHz part, filter losses were only considered in the spurious frequency bands and the authorized band was not corrected for Band Reject Filter losses.
6. Only the worst case emission was recorded, if it complies with the limit, the other emissions deemed to comply with the limit.

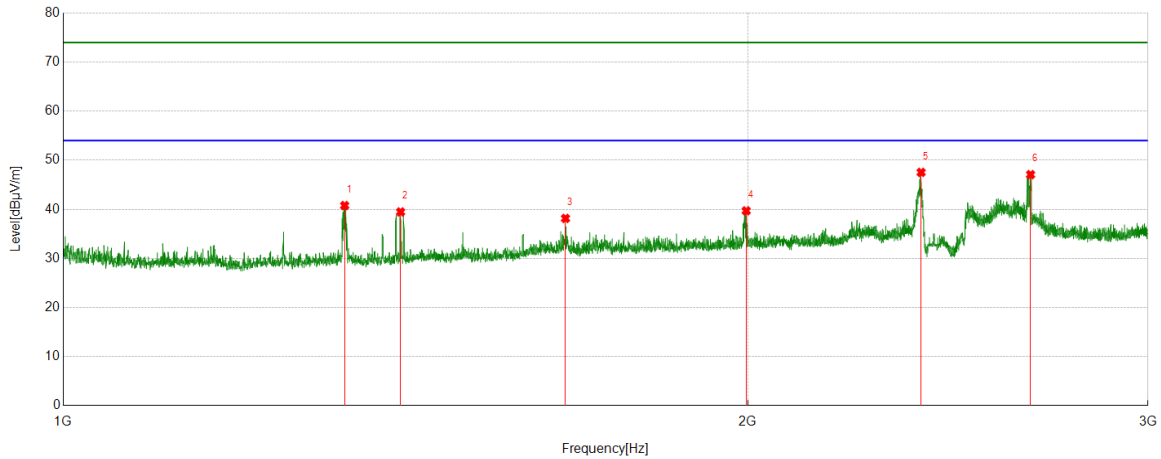
Test Mode	Channel	Polarization	Verdict
11N HT20	LCH	Horizontal	PASS



No.	Frequency	Reading Level	Correct Factor	Result	Limit	Margin	Remark
	[MHz]	[dBuV]	[dB/m]	[dBuV/m]	[dBuV/m]	[dB]	
1	1332.0415	55.78	-20.59	35.19	74.00	-38.81	Horizontal
2	1659.5824	52.38	-18.33	34.05	74.00	-39.95	Horizontal
3	1794.8494	52.83	-17.81	35.02	74.00	-38.98	Horizontal
4	2053.3817	51.86	-16.01	35.85	74.00	-38.15	Horizontal
5	2380.6726	59.56	-14.22	45.34	74.00	-28.66	Horizontal
6	2601.2002	55.90	-13.22	42.68	74.00	-31.32	Horizontal

- Note: 1. Measurement = Reading Level + Correct Factor,
Correct Factor = Antenna Factor + Loss (Cable + Filter) – Amplifier Gain.
2. If Peak Result complies with AV limit, AV Result is deemed to comply with AV limit.
3. Test setup: RBW: 1 MHz, VBW: 3 MHz, Sweep time: auto.
4. Peak: Peak detector.
5. For below 3GHz part, filter losses were only considered in the spurious frequency bands and the authorized band was not corrected for Band Reject Filter losses.
6. Only the worst case emission was recorded, if it complies with the limit, the other emissions deemed to comply with the limit.

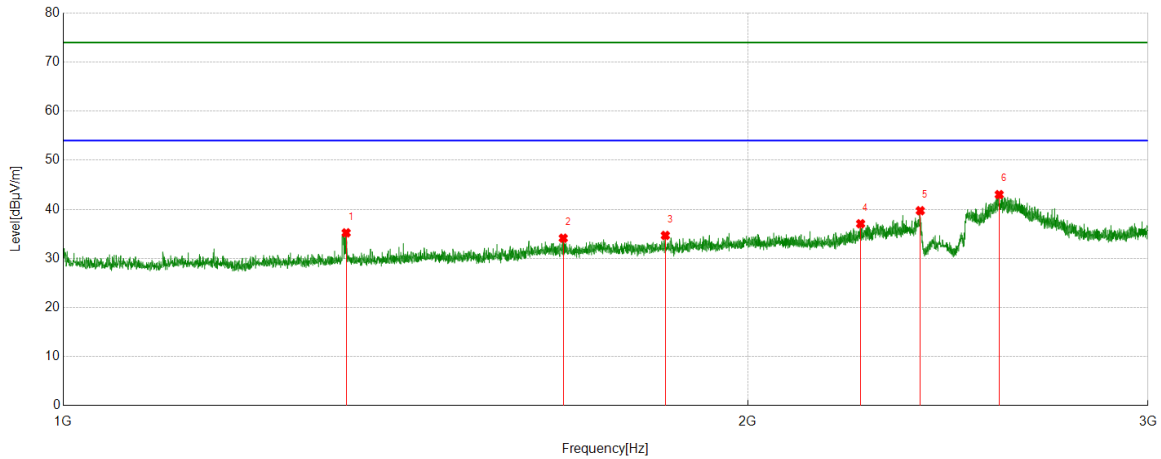
Test Mode	Channel	Polarization	Verdict
11N HT20	LCH	Vertical	PASS



No.	Frequency	Reading Level	Correct Factor	Result	Limit	Margin	Remark
	[MHz]	[dBuV]	[dB/m]	[dBuV/m]	[dBuV/m]	[dB]	
1	1329.7912	61.35	-20.58	40.77	74.00	-33.23	Vertical
2	1407.3009	59.71	-20.24	39.47	74.00	-34.53	Vertical
3	1663.0829	56.41	-18.26	38.15	74.00	-35.85	Vertical
4	1997.1246	56.00	-16.30	39.70	74.00	-34.30	Vertical
5	2384.173	61.76	-14.23	47.53	74.00	-26.47	Vertical
6	2663.708	60.32	-13.24	47.08	74.00	-26.92	Vertical

- Note: 1. Measurement = Reading Level + Correct Factor,
Correct Factor = Antenna Factor + Loss (Cable + Filter) – Amplifier Gain.
2. If Peak Result complies with AV limit, AV Result is deemed to comply with AV limit.
3. Test setup: RBW: 1 MHz, VBW: 3 MHz, Sweep time: auto.
4. Peak: Peak detector.
5. For below 3GHz part, filter losses were only considered in the spurious frequency bands and the authorized band was not corrected for Band Reject Filter losses.
6. Only the worst case emission was recorded, if it complies with the limit, the other emissions deemed to comply with the limit.

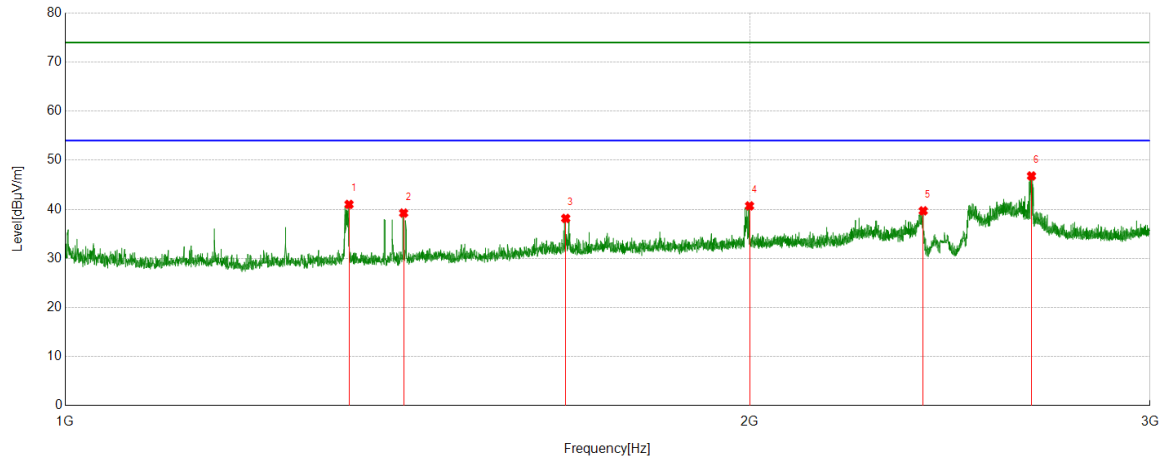
Test Mode	Channel	Polarization	Verdict
11N HT20	MCH	Horizontal	PASS



No.	Frequency	Reading Level	Correct Factor	Result	Limit	Margin	Remark
	[MHz]	[dBuV]	[dB/m]	[dBuV/m]	[dBuV/m]	[dB]	
1	1331.7915	55.80	-20.59	35.21	74.00	-38.79	Horizontal
2	1659.3324	52.45	-18.33	34.12	74.00	-39.88	Horizontal
3	1840.105	51.88	-17.20	34.68	74.00	-39.32	Horizontal
4	2242.4053	52.09	-15.03	37.06	74.00	-36.94	Horizontal
5	2382.1728	53.94	-14.22	39.72	74.00	-34.28	Horizontal
6	2580.4476	56.49	-13.49	43.00	74.00	-31.00	Horizontal

- Note: 1. Measurement = Reading Level + Correct Factor,
Correct Factor = Antenna Factor + Loss (Cable + Filter) – Amplifier Gain.
2. If Peak Result complies with AV limit, AV Result is deemed to comply with AV limit.
3. Test setup: RBW: 1 MHz, VBW: 3 MHz, Sweep time: auto.
4. Peak: Peak detector.
5. For below 3GHz part, filter losses were only considered in the spurious frequency bands and the authorized band was not corrected for Band Reject Filter losses.
6. Only the worst case emission was recorded, if it complies with the limit, the other emissions deemed to comply with the limit.

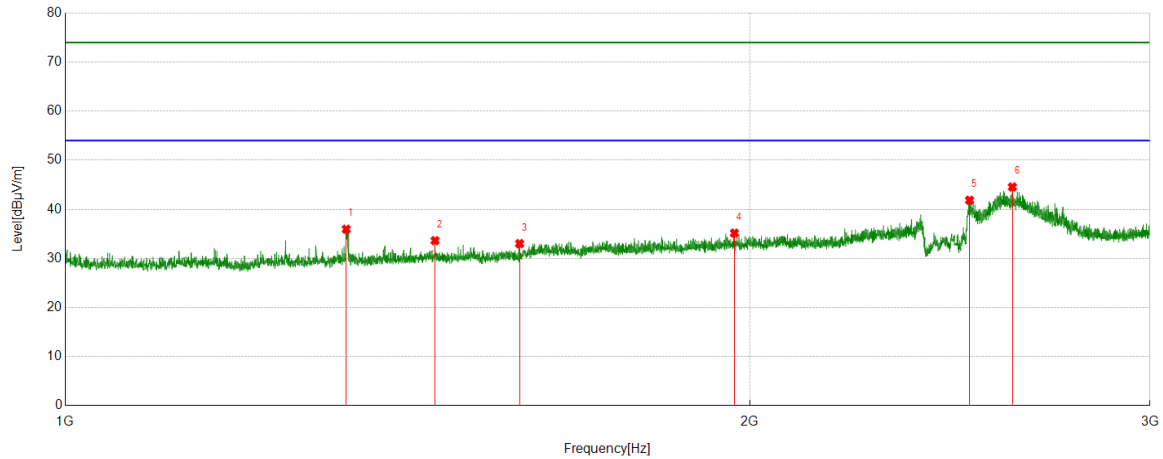
Test Mode	Channel	Polarization	Verdict
11N HT20	MCH	Vertical	PASS



No.	Frequency	Reading Level	Correct Factor	Result	Limit	Margin	Remark
	[MHz]	[dBuV]	[dB/m]	[dBuV/m]	[dBuV/m]	[dB]	
1	1333.0416	61.59	-20.59	41.00	74.00	-33.00	Vertical
2	1408.8011	59.43	-20.19	39.24	74.00	-34.76	Vertical
3	1660.0825	56.48	-18.33	38.15	74.00	-35.85	Vertical
4	1999.875	56.98	-16.28	40.70	74.00	-33.30	Vertical
5	2384.4231	53.92	-14.23	39.69	74.00	-34.31	Vertical
6	2660.7076	60.03	-13.23	46.80	74.00	-27.20	Vertical

- Note: 1. Measurement = Reading Level + Correct Factor,
Correct Factor = Antenna Factor + Loss (Cable + Filter) – Amplifier Gain.
2. If Peak Result complies with AV limit, AV Result is deemed to comply with AV limit.
3. Test setup: RBW: 1 MHz, VBW: 3 MHz, Sweep time: auto.
4. Peak: Peak detector.
5. For below 3GHz part, filter losses were only considered in the spurious frequency bands and the authorized band was not corrected for Band Reject Filter losses.
6. Only the worst case emission was recorded, if it complies with the limit, the other emissions deemed to comply with the limit.

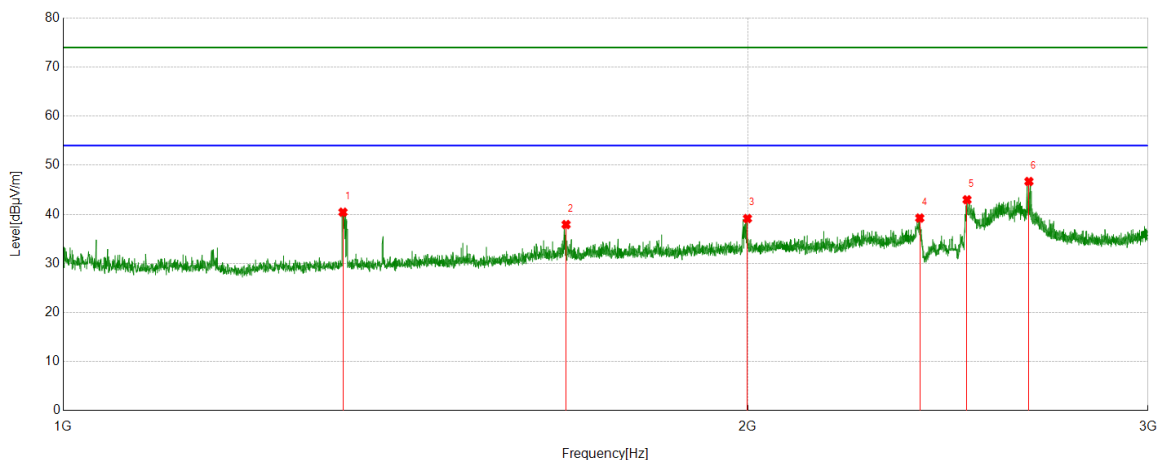
Test Mode	Channel	Polarization	Verdict
11N HT20	HCH	Horizontal	PASS



No.	Frequency	Reading Level	Correct Factor	Result	Limit	Margin	Remark
	[MHz]	[dBuV]	[dB/m]	[dBuV/m]	[dBuV/m]	[dB]	
1	1329.2912	56.54	-20.59	35.95	74.00	-38.05	Horizontal
2	1454.3068	53.21	-19.59	33.62	74.00	-40.38	Horizontal
3	1584.323	51.95	-18.94	33.01	74.00	-40.99	Horizontal
4	1969.3712	51.57	-16.41	35.16	74.00	-38.84	Horizontal
5	2498.9374	55.29	-13.43	41.86	74.00	-32.14	Horizontal
6	2609.7012	57.75	-13.20	44.55	74.00	-29.45	Horizontal

- Note: 1. Measurement = Reading Level + Correct Factor,
Correct Factor = Antenna Factor + Loss (Cable + Filter) – Amplifier Gain.
2. If Peak Result complies with AV limit, AV Result is deemed to comply with AV limit.
3. Test setup: RBW: 1 MHz, VBW: 3 MHz, Sweep time: auto.
4. Peak: Peak detector.
5. For below 3GHz part, filter losses were only considered in the spurious frequency bands and the authorized band was not corrected for Band Reject Filter losses.
6. Only the worst case emission was recorded, if it complies with the limit, the other emissions deemed to comply with the limit.

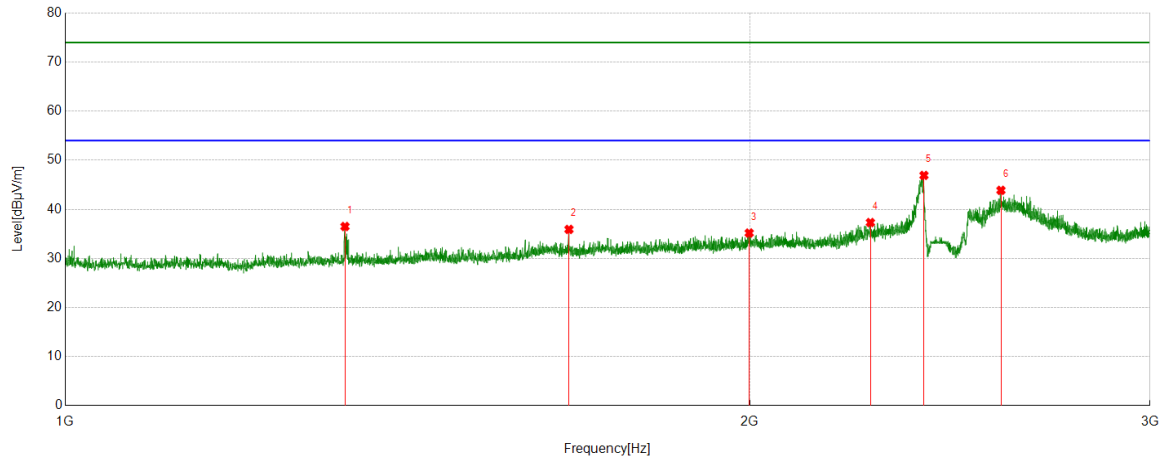
Test Mode	Channel	Polarization	Verdict
11N HT20	HCH	Vertical	PASS



No.	Frequency	Reading Level	Correct Factor	Result	Limit	Margin	Remark
	[MHz]	[dBuV]	[dB/m]	[dBuV/m]	[dBuV/m]	[dB]	
1	1327.5409	61.03	-20.60	40.43	74.00	-33.57	Vertical
2	1664.083	56.16	-18.24	37.92	74.00	-36.08	Vertical
3	1999.625	55.42	-16.28	39.14	74.00	-34.86	Vertical
4	2380.9226	53.46	-14.22	39.24	74.00	-34.76	Vertical
5	2497.6872	56.40	-13.43	42.97	74.00	-31.03	Vertical
6	2659.2074	59.91	-13.22	46.69	74.00	-27.31	Vertical

- Note: 1. Measurement = Reading Level + Correct Factor,
Correct Factor = Antenna Factor + Loss (Cable + Filter) – Amplifier Gain.
2. If Peak Result complies with AV limit, AV Result is deemed to comply with AV limit.
3. Test setup: RBW: 1 MHz, VBW: 3 MHz, Sweep time: auto.
4. Peak: Peak detector.
5. For below 3GHz part, filter losses were only considered in the spurious frequency bands and the authorized band was not corrected for Band Reject Filter losses.
6. Only the worst case emission was recorded, if it complies with the limit, the other emissions deemed to comply with the limit.

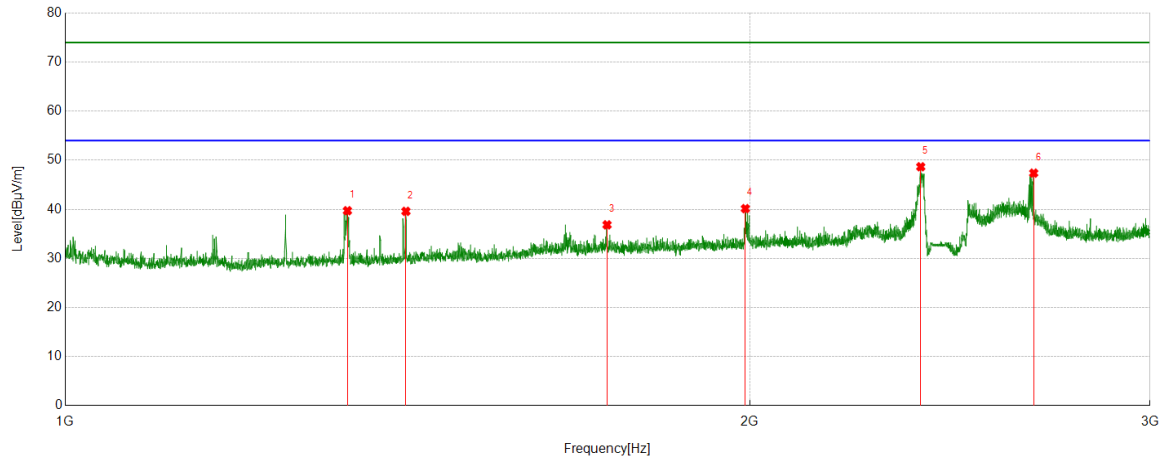
Test Mode	Channel	Polarization	Verdict
11N HT40	LCH	Horizontal	PASS



No.	Frequency	Reading Level	Correct Factor	Result	Limit	Margin	Remark
	[MHz]	[dBuV]	[dB/m]	[dBuV/m]	[dBuV/m]	[dB]	
1	1327.5409	57.10	-20.60	36.50	74.00	-37.50	Horizontal
2	1665.5832	54.12	-18.21	35.91	74.00	-38.09	Horizontal
3	1999.1249	51.46	-16.29	35.17	74.00	-38.83	Horizontal
4	2260.1575	52.53	-15.22	37.31	74.00	-36.69	Horizontal
5	2386.1733	61.14	-14.23	46.91	74.00	-27.09	Horizontal
6	2579.6975	57.36	-13.49	43.87	74.00	-30.13	Horizontal

- Note: 1. Measurement = Reading Level + Correct Factor,
Correct Factor = Antenna Factor + Loss (Cable + Filter) – Amplifier Gain.
2. If Peak Result complies with AV limit, AV Result is deemed to comply with AV limit.
3. Test setup: RBW: 1 MHz, VBW: 3 MHz, Sweep time: auto.
4. Peak: Peak detector.
5. For below 3GHz part, filter losses were only considered in the spurious frequency bands and the authorized band was not corrected for Band Reject Filter losses.
6. Only the worst case emission was recorded, if it complies with the limit, the other emissions deemed to comply with the limit.

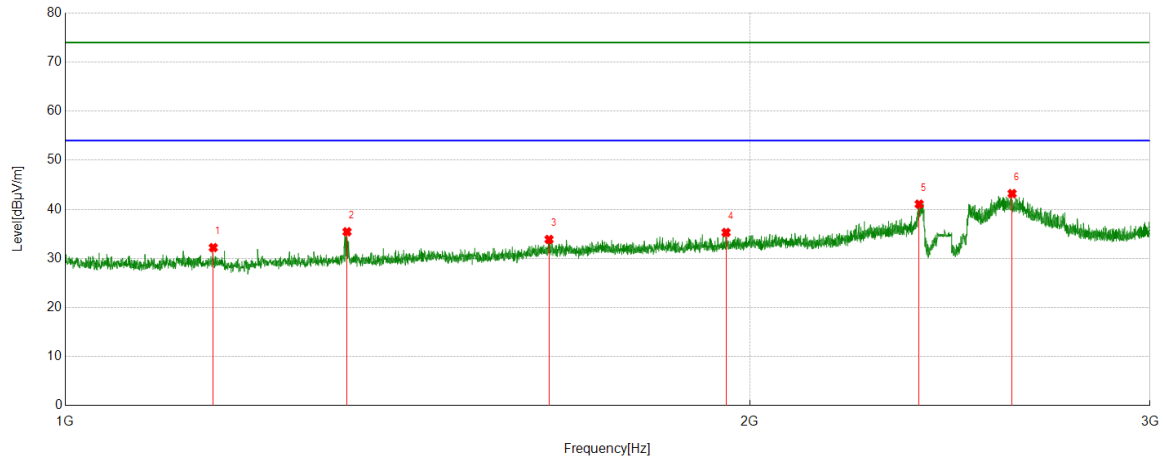
Test Mode	Channel	Polarization	Verdict
11N HT40	LCH	Vertical	PASS



No.	Frequency	Reading Level	Correct Factor	Result	Limit	Margin	Remark
	[MHz]	[dBuV]	[dB/m]	[dBuV/m]	[dBuV/m]	[dB]	
1	1330.7913	60.30	-20.58	39.72	74.00	-34.28	Vertical
2	1412.0515	59.78	-20.19	39.59	74.00	-34.41	Vertical
3	1731.0914	54.78	-17.94	36.84	74.00	-37.16	Vertical
4	1991.3739	56.48	-16.34	40.14	74.00	-33.86	Vertical
5	2378.4223	62.93	-14.26	48.67	74.00	-25.33	Vertical
6	2666.7083	60.62	-13.24	47.38	74.00	-26.62	Vertical

- Note: 1. Measurement = Reading Level + Correct Factor,
Correct Factor = Antenna Factor + Loss (Cable + Filter) – Amplifier Gain.
2. If Peak Result complies with AV limit, AV Result is deemed to comply with AV limit.
3. Test setup: RBW: 1 MHz, VBW: 3 MHz, Sweep time: auto.
4. Peak: Peak detector.
5. For below 3GHz part, filter losses were only considered in the spurious frequency bands and the authorized band was not corrected for Band Reject Filter losses.
6. Only the worst case emission was recorded, if it complies with the limit, the other emissions deemed to comply with the limit.

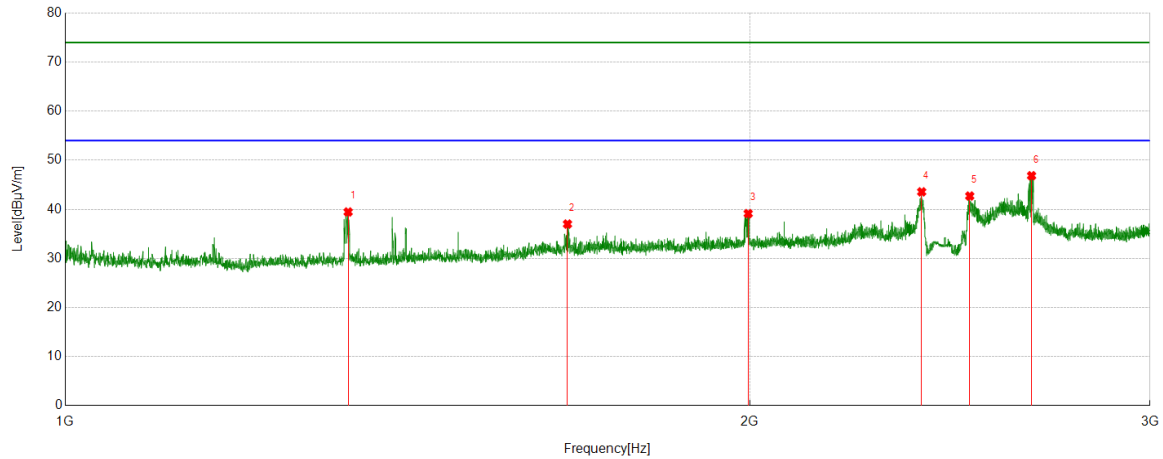
Test Mode	Channel	Polarization	Verdict
11N HT40	MCH	Horizontal	PASS



No.	Frequency	Reading Level	Correct Factor	Result	Limit	Margin	Remark
	[MHz]	[dBuV]	[dB/m]	[dBuV/m]	[dBuV/m]	[dB]	
1	1161.7702	53.62	-21.42	32.20	74.00	-41.80	Horizontal
2	1330.2913	56.01	-20.58	35.43	74.00	-38.57	Horizontal
3	1632.329	52.33	-18.46	33.87	74.00	-40.13	Horizontal
4	1952.8691	52.07	-16.79	35.28	74.00	-38.72	Horizontal
5	2374.6718	55.39	-14.33	41.06	74.00	-32.94	Horizontal
6	2608.9511	56.41	-13.20	43.21	74.00	-30.79	Horizontal

- Note: 1. Measurement = Reading Level + Correct Factor,
Correct Factor = Antenna Factor + Loss (Cable + Filter) – Amplifier Gain.
2. If Peak Result complies with AV limit, AV Result is deemed to comply with AV limit.
3. Test setup: RBW: 1 MHz, VBW: 3 MHz, Sweep time: auto.
4. Peak: Peak detector.
5. For below 3GHz part, filter losses were only considered in the spurious frequency bands and the authorized band was not corrected for Band Reject Filter losses.
6. Only the worst case emission was recorded, if it complies with the limit, the other emissions deemed to comply with the limit.

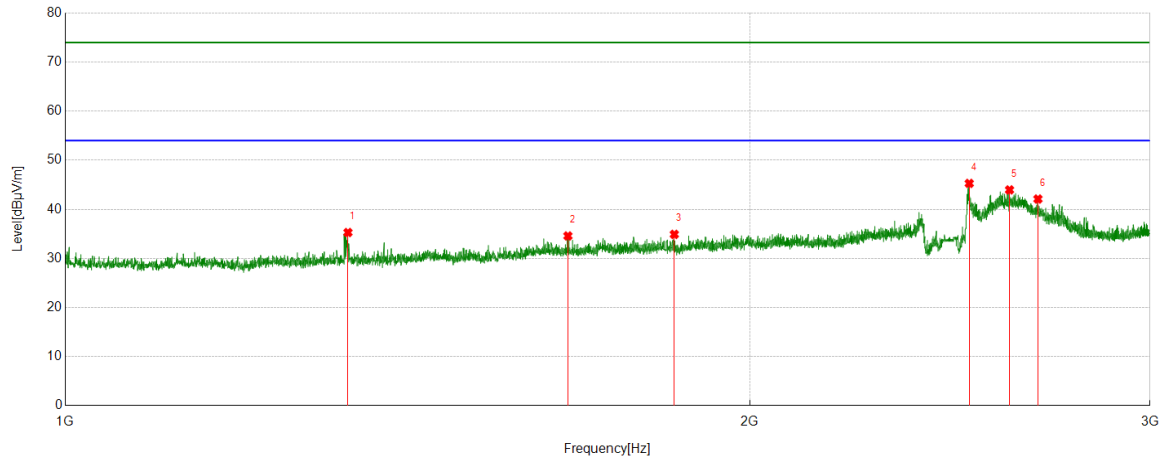
Test Mode	Channel	Polarization	Verdict
11N HT40	MCH	Vertical	PASS



No.	Frequency	Reading Level	Correct Factor	Result	Limit	Margin	Remark
	[MHz]	[dBuV]	[dB/m]	[dBuV/m]	[dBuV/m]	[dB]	
1	1331.7915	60.05	-20.59	39.46	74.00	-34.54	Vertical
2	1663.0829	55.26	-18.26	37.00	74.00	-37.00	Vertical
3	1997.1246	55.43	-16.30	39.13	74.00	-34.87	Vertical
4	2380.6726	57.78	-14.22	43.56	74.00	-30.44	Vertical
5	2499.4374	56.13	-13.42	42.71	74.00	-31.29	Vertical
6	2660.9576	60.09	-13.24	46.85	74.00	-27.15	Vertical

- Note: 1. Measurement = Reading Level + Correct Factor,
Correct Factor = Antenna Factor + Loss (Cable + Filter) – Amplifier Gain.
2. If Peak Result complies with AV limit, AV Result is deemed to comply with AV limit.
3. Test setup: RBW: 1 MHz, VBW: 3 MHz, Sweep time: auto.
4. Peak: Peak detector.
5. For below 3GHz part, filter losses were only considered in the spurious frequency bands and the authorized band was not corrected for Band Reject Filter losses.
6. Only the worst case emission was recorded, if it complies with the limit, the other emissions deemed to comply with the limit.

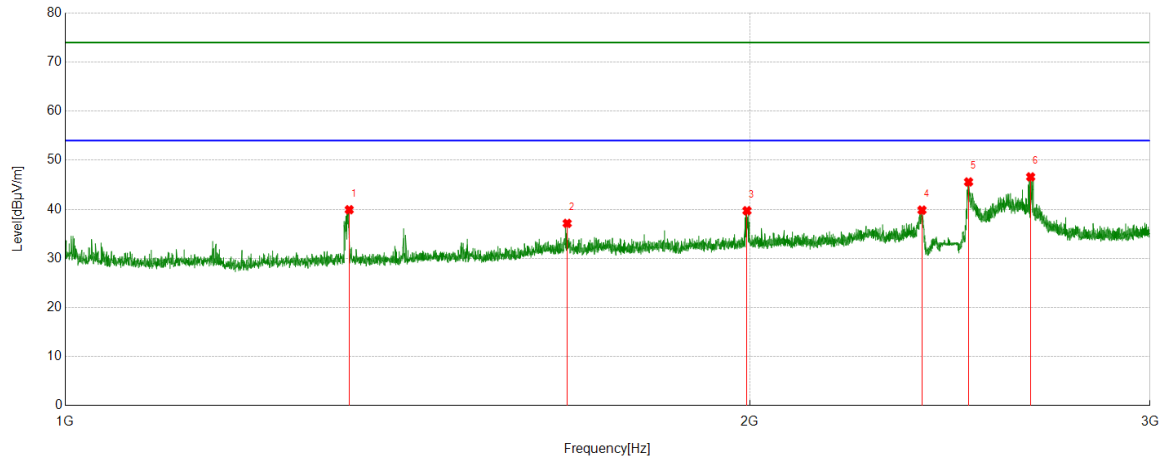
Test Mode	Channel	Polarization	Verdict
11N HT40	HCH	Horizontal	PASS



No.	Frequency	Reading Level	Correct Factor	Result	Limit	Margin	Remark
	[MHz]	[dBuV]	[dB/m]	[dBuV/m]	[dBuV/m]	[dB]	
1	1331.5414	55.87	-20.59	35.28	74.00	-38.72	Horizontal
2	1663.833	52.83	-18.25	34.58	74.00	-39.42	Horizontal
3	1853.1066	52.15	-17.25	34.90	74.00	-39.10	Horizontal
4	2498.1873	58.71	-13.43	45.28	74.00	-28.72	Horizontal
5	2602.2003	57.18	-13.22	43.96	74.00	-30.04	Horizontal
6	2678.2098	55.07	-12.97	42.10	74.00	-31.90	Horizontal

- Note: 1. Measurement = Reading Level + Correct Factor,
Correct Factor = Antenna Factor + Loss (Cable + Filter) – Amplifier Gain.
2. If Peak Result complies with AV limit, AV Result is deemed to comply with AV limit.
3. Test setup: RBW: 1 MHz, VBW: 3 MHz, Sweep time: auto.
4. Peak: Peak detector.
5. For below 3GHz part, filter losses were only considered in the spurious frequency bands and the authorized band was not corrected for Band Reject Filter losses.
6. Only the worst case emission was recorded, if it complies with the limit, the other emissions deemed to comply with the limit.

Test Mode	Channel	Polarization	Verdict
11N HT40	HCH	Vertical	PASS



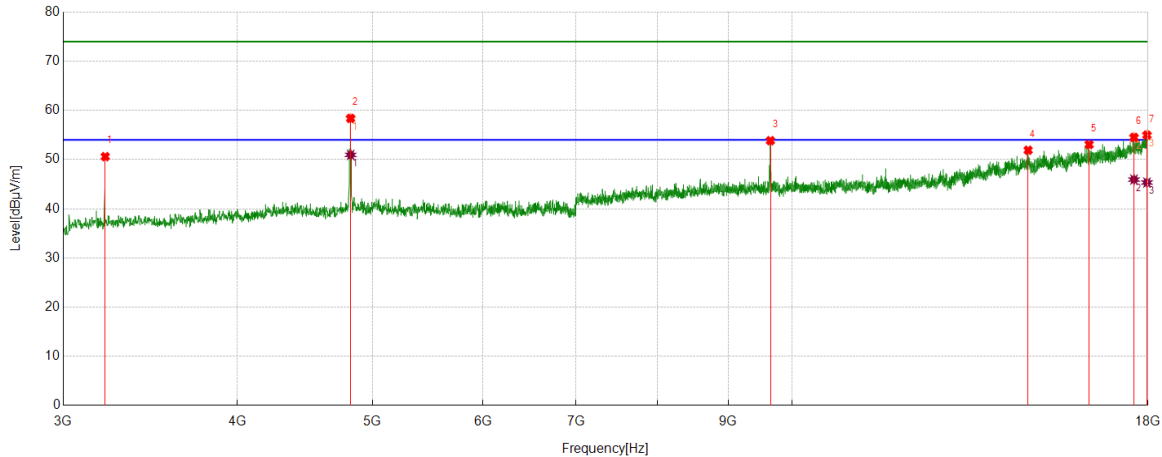
No.	Frequency	Reading Level	Correct Factor	Result	Limit	Margin	Remark
	[MHz]	[dBuV]	[dB/m]	[dBuV/m]	[dBuV/m]	[dB]	
1	1333.2917	60.51	-20.59	39.92	74.00	-34.08	Vertical
2	1662.5828	55.41	-18.27	37.14	74.00	-36.86	Vertical
3	1994.6243	56.03	-16.31	39.72	74.00	-34.28	Vertical
4	2381.4227	54.06	-14.22	39.84	74.00	-34.16	Vertical
5	2496.4371	59.02	-13.44	45.58	74.00	-28.42	Vertical
6	2658.4573	59.84	-13.23	46.61	74.00	-27.39	Vertical

- Note: 1. Measurement = Reading Level + Correct Factor,
Correct Factor = Antenna Factor + Loss (Cable + Filter) – Amplifier Gain.
2. If Peak Result complies with AV limit, AV Result is deemed to comply with AV limit.
3. Test setup: RBW: 1 MHz, VBW: 3 MHz, Sweep time: auto.
4. Peak: Peak detector.
5. For below 3GHz part, filter losses were only considered in the spurious frequency bands and the authorized band was not corrected for Band Reject Filter losses.
6. Only the worst case emission was recorded, if it complies with the limit, the other emissions deemed to comply with the limit.

Part 2: 3GHz~18GHz

HARMONICS AND SPURIOUS EMISSIONS

Test Mode	Channel	Polarization	Verdict
11B	LCH	Horizontal	PASS



PK Result:

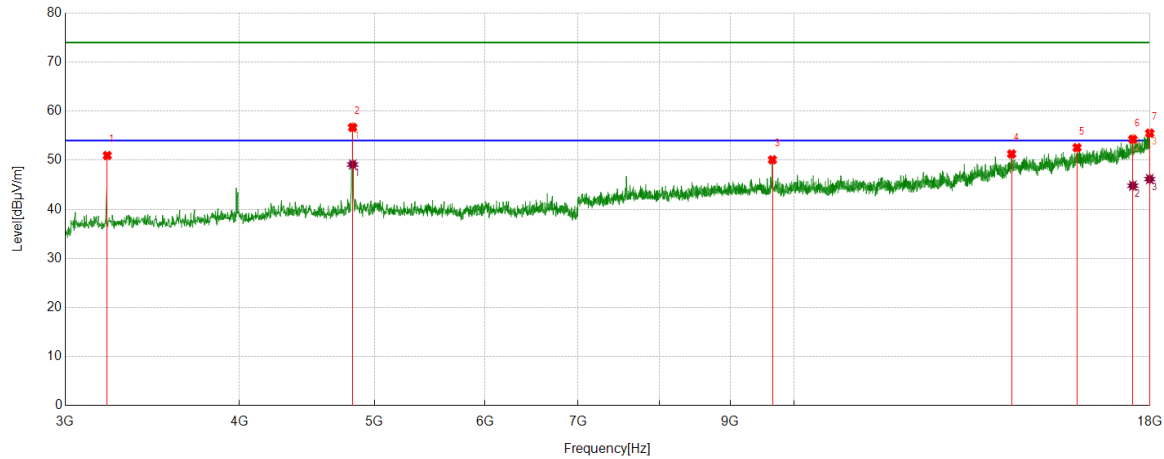
No.	Frequency	Reading Level	Correct Factor	Result	Limit	Margin	Remark
	[MHz]	[dBuV]	[dB/m]	[dBuV/m]	[dBuV/m]	[dB]	
1	3215.652	59.98	-9.38	50.60	74.00	-23.40	Horizontal
2	4822.7278	62.47	-4.09	58.38	74.00	-15.62	Horizontal
3	9647.706	50.12	3.73	53.85	74.00	-20.15	Horizontal
4	14767.0959	40.27	11.64	51.91	74.00	-22.09	Horizontal
5	16332.9166	39.34	13.71	53.05	74.00	-20.95	Horizontal
6	17589.3237	36.86	17.65	54.51	74.00	-19.49	Horizontal
7	17969.9962	36.28	18.70	54.98	74.00	-19.02	Horizontal

AV Result:

No.	Frequency	Reading Level	Correct Factor	Result	Limit	Margin	Remark
	[MHz]	[dBuV]	[dB/m]	[dBuV/m]	[dBuV/m]	[dB]	
1	4822.7278	55.05	-4.09	50.96	54.00	-3.04	Horizontal
2	17589.3237	28.28	17.65	45.93	54.00	-8.07	Horizontal
3	17969.9962	26.63	18.70	45.33	54.00	-8.67	Horizontal

- Note: 1. Measurement = Reading Level + Correct Factor,
Correct Factor = Antenna Factor + Loss (Cable + Filter) – Amplifier Gain.
- If Peak Result complies with AV limit, AV Result is deemed to comply with AV limit.
 - Peak detector: RBW: 1 MHz, VBW: 3 MHz.
 - Average detector: RBW: 1 MHz, VBW: 1/T MHz(refer to clause 7.1.).
 - For above 3GHz part, filter losses were only considered in the spurious frequency bands and the authorized band was not corrected for HPF losses.
 - Only the worst case emission was recorded, if it complies with the limit, the other emissions deemed to comply with the limit.

Test Mode	Channel	Polarization	Verdict
11B	LCH	Vertical	PASS



PK Result:

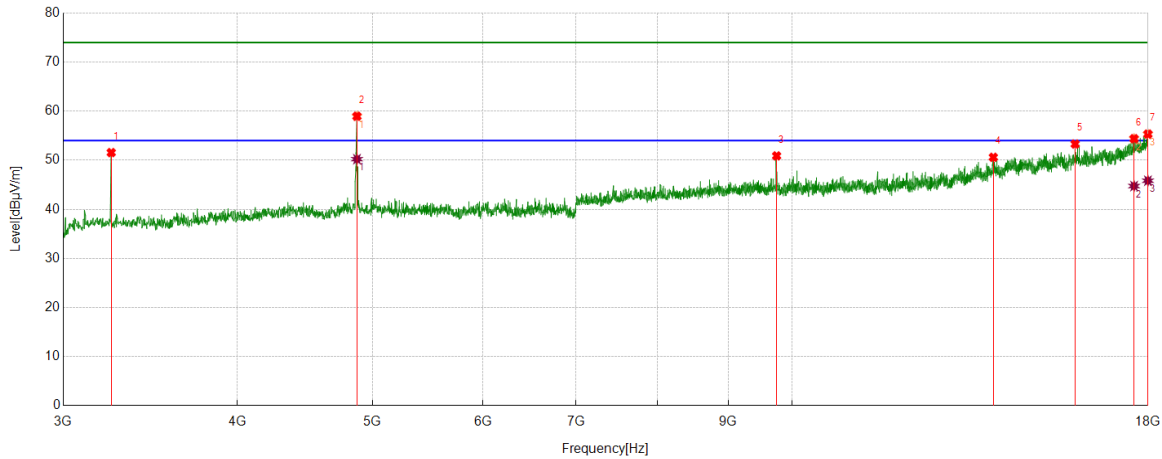
No.	Frequency	Reading Level	Correct Factor	Result	Limit	Margin	Remark
	[MHz]	[dBuV]	[dB/m]	[dBuV/m]	[dBuV/m]	[dB]	
1	3215.652	60.34	-9.38	50.96	74.00	-23.04	Vertical
2	4822.7278	60.78	-4.09	56.69	74.00	-17.31	Vertical
3	9647.706	46.36	3.73	50.09	74.00	-23.91	Vertical
4	14320.7901	40.17	11.11	51.28	74.00	-22.72	Vertical
5	15957.8697	38.58	13.99	52.57	74.00	-21.43	Vertical
6	17497.4372	37.20	17.07	54.27	74.00	-19.73	Vertical
7	17992.4991	36.89	18.63	55.52	74.00	-18.48	Vertical

AV Result:

No.	Frequency	Reading Level	Correct Factor	Result	Limit	Margin	Remark
	[MHz]	[dBuV]	[dB/m]	[dBuV/m]	[dBuV/m]	[dB]	
1	4822.7278	53.23	-4.09	49.14	54.00	-4.86	Vertical
2	17497.4372	27.74	17.07	44.81	54.00	-9.19	Vertical
3	17992.4991	27.53	18.63	46.16	54.00	-7.84	Vertical

- Note: 1. Measurement = Reading Level + Correct Factor,
Correct Factor = Antenna Factor + Loss (Cable + Filter) – Amplifier Gain.
2. If Peak Result complies with AV limit, AV Result is deemed to comply with AV limit.
3. Peak detector: RBW: 1 MHz, VBW: 3 MHz.
4. Average detector: RBW: 1 MHz, VBW: 1/T MHz(refer to clause 7.1.).
5. For above 3GHz part, filter losses were only considered in the spurious frequency bands and the authorized band was not corrected for HPF losses.
6. Only the worst case emission was recorded, if it complies with the limit, the other emissions deemed to comply with the limit.

Test Mode	Channel	Polarization	Verdict
11B	MCH	Horizontal	PASS



PK Result:

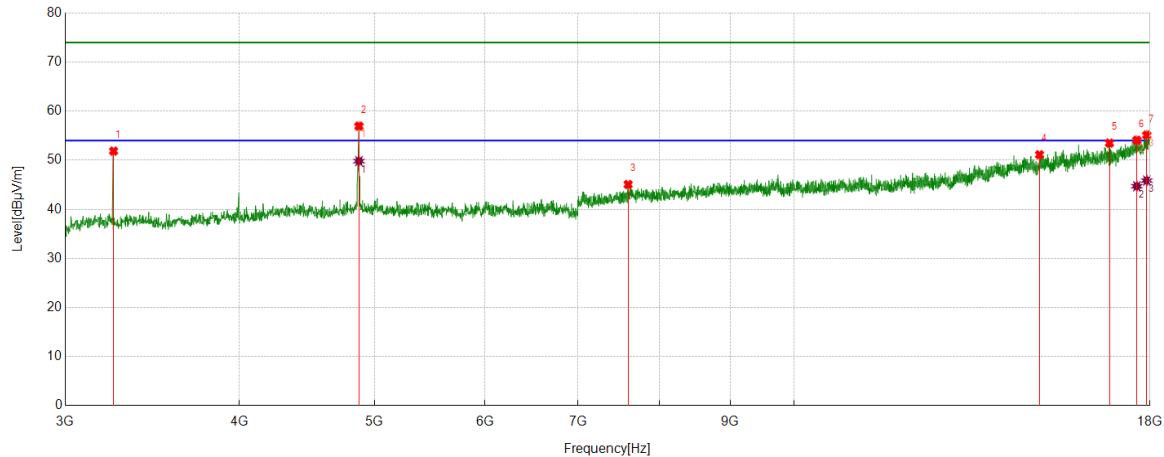
No.	Frequency	Reading Level	Correct Factor	Result	Limit	Margin	Remark
	[MHz]	[dBuV]	[dB/m]	[dBuV/m]	[dBuV/m]	[dB]	
1	3247.5309	61.12	-9.56	51.56	74.00	-22.44	Horizontal
2	4873.3592	62.58	-3.62	58.96	74.00	-15.04	Horizontal
3	9747.0934	47.71	3.18	50.89	74.00	-23.11	Horizontal
4	13941.9927	39.79	10.81	50.60	74.00	-23.40	Horizontal
5	15959.745	39.27	14.03	53.30	74.00	-20.70	Horizontal
6	17591.1989	36.74	17.65	54.39	74.00	-19.61	Horizontal
7	17998.1248	36.61	18.72	55.33	74.00	-18.67	Horizontal

AV Result:

No.	Frequency	Reading Level	Correct Factor	Result	Limit	Margin	Remark
	[MHz]	[dBuV]	[dB/m]	[dBuV/m]	[dBuV/m]	[dB]	
1	4873.3592	53.84	-3.62	50.22	54.00	-3.78	Horizontal
2	17591.1989	27.09	17.65	44.74	54.00	-9.26	Horizontal
3	17998.1248	27.11	18.72	45.83	54.00	-8.17	Horizontal

- Note: 1. Measurement = Reading Level + Correct Factor,
Correct Factor = Antenna Factor + Loss (Cable + Filter) – Amplifier Gain.
- If Peak Result complies with AV limit, AV Result is deemed to comply with AV limit.
 - Peak detector: RBW: 1 MHz, VBW: 3 MHz.
 - Average detector: RBW: 1 MHz, VBW: 1/T MHz(refer to clause 7.1.).
 - For above 3GHz part, filter losses were only considered in the spurious frequency bands and the authorized band was not corrected for HPF losses.
 - Only the worst case emission was recorded, if it complies with the limit, the other emissions deemed to comply with the limit.

Test Mode	Channel	Polarization	Verdict
11B	MCH	Vertical	PASS


PK Result:

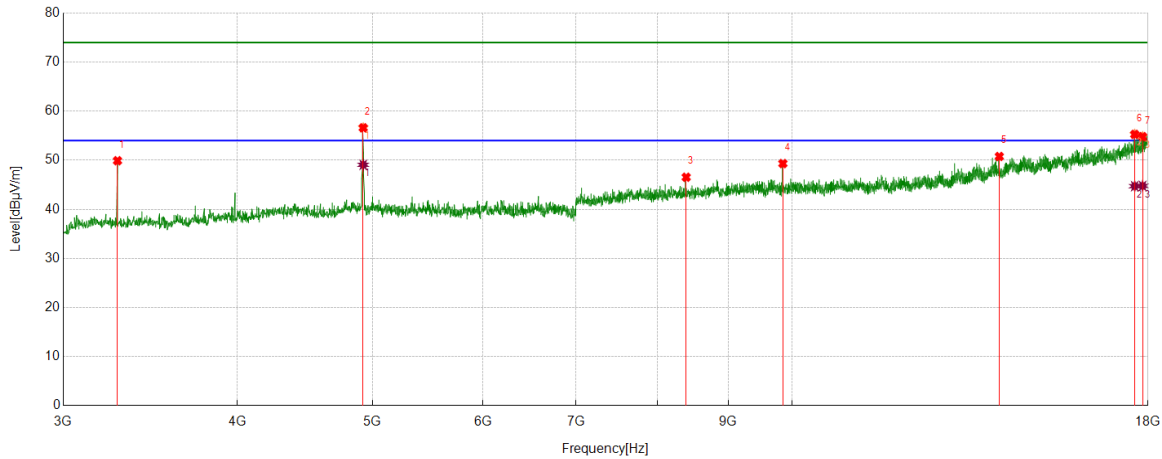
No.	Frequency	Reading Level	Correct Factor	Result	Limit	Margin	Remark
	[MHz]	[dBuV]	[dB/m]	[dBuV/m]	[dBuV/m]	[dB]	
1	3249.4062	61.52	-9.66	51.86	74.00	-22.14	Vertical
2	4873.3592	60.57	-3.62	56.95	74.00	-17.05	Vertical
3	7601.8252	44.31	0.75	45.06	74.00	-28.94	Vertical
4	14997.7497	38.95	12.18	51.13	74.00	-22.87	Vertical
5	16835.4794	38.15	15.35	53.50	74.00	-20.50	Vertical
6	17613.7017	36.46	17.61	54.07	74.00	-19.93	Vertical
7	17906.2383	35.99	19.14	55.13	74.00	-18.87	Vertical

AV Result:

No.	Frequency	Reading Level	Correct Factor	Result	Limit	Margin	Remark
	[MHz]	[dBuV]	[dB/m]	[dBuV/m]	[dBuV/m]	[dB]	
1	4873.3592	53.44	-3.62	49.82	54.00	-4.18	Vertical
2	17613.7017	27.09	17.61	44.70	54.00	-9.30	Vertical
3	17906.2383	26.72	19.14	45.86	54.00	-8.14	Vertical

- Note: 1. Measurement = Reading Level + Correct Factor,
 Correct Factor = Antenna Factor + Loss (Cable + Filter) – Amplifier Gain.
- If Peak Result complies with AV limit, AV Result is deemed to comply with AV limit.
 - Peak detector: RBW: 1 MHz, VBW: 3 MHz.
 - Average detector: RBW: 1 MHz, VBW: 1/T MHz(refer to clause 7.1.).
 - For above 3GHz part, filter losses were only considered in the spurious frequency bands and the authorized band was not corrected for HPF losses.
 - Only the worst case emission was recorded, if it complies with the limit, the other emissions deemed to comply with the limit.

Test Mode	Channel	Polarization	Verdict
11B	HCH	Horizontal	PASS



PK Result:

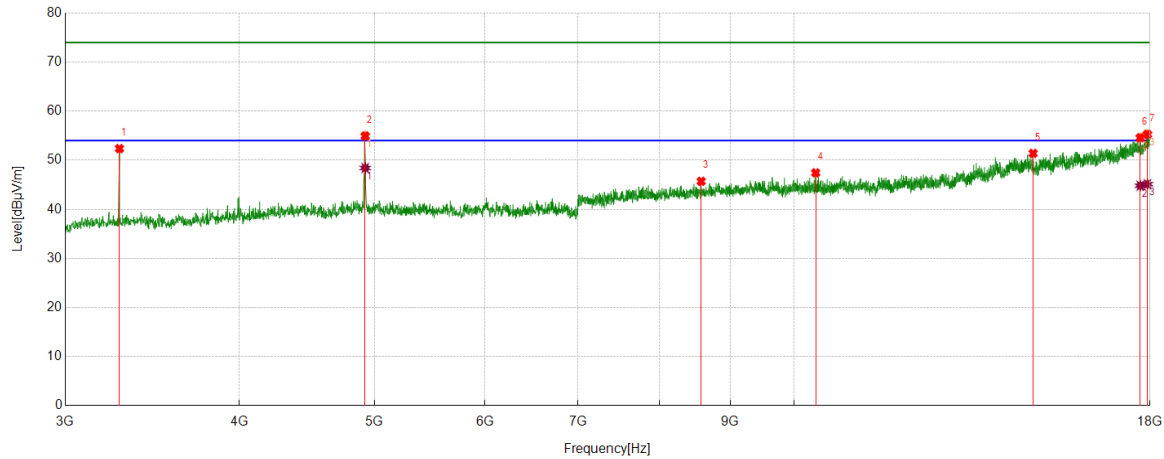
No.	Frequency	Reading Level	Correct Factor	Result	Limit	Margin	Remark
	[MHz]	[dBuV]	[dB/m]	[dBuV/m]	[dBuV/m]	[dB]	
1	3281.2852	59.32	-9.42	49.90	74.00	-24.10	Horizontal
2	4923.9905	60.49	-3.88	56.61	74.00	-17.39	Horizontal
3	8395.0494	44.65	1.89	46.54	74.00	-27.46	Horizontal
4	9848.356	45.68	3.64	49.32	74.00	-24.68	Horizontal
5	14080.7601	39.12	11.65	50.77	74.00	-23.23	Horizontal
6	17609.9512	37.67	17.60	55.27	74.00	-18.73	Horizontal
7	17840.6051	36.27	18.53	54.80	74.00	-19.20	Horizontal

AV Result:

No.	Frequency	Reading Level	Correct Factor	Result	Limit	Margin	Remark
	[MHz]	[dBuV]	[dB/m]	[dBuV/m]	[dBuV/m]	[dB]	
1	4923.9905	52.95	-3.88	49.07	54.00	-4.93	Horizontal
2	17609.9512	27.12	17.60	44.72	54.00	-9.28	Horizontal
3	17840.6051	26.24	18.53	44.77	54.00	-9.23	Horizontal

- Note: 1. Measurement = Reading Level + Correct Factor,
Correct Factor = Antenna Factor + Loss (Cable + Filter) – Amplifier Gain.
2. If Peak Result complies with AV limit, AV Result is deemed to comply with AV limit.
3. Peak detector: RBW: 1 MHz, VBW: 3 MHz.
4. Average detector: RBW: 1 MHz, VBW: 1/T MHz(refer to clause 7.1.).
5. For above 3GHz part, filter losses were only considered in the spurious frequency bands and the authorized band was not corrected for HPF losses.
6. Only the worst case emission was recorded, if it complies with the limit, the other emissions deemed to comply with the limit.

Test Mode	Channel	Polarization	Verdict
11B	HCH	Vertical	PASS



PK Result:

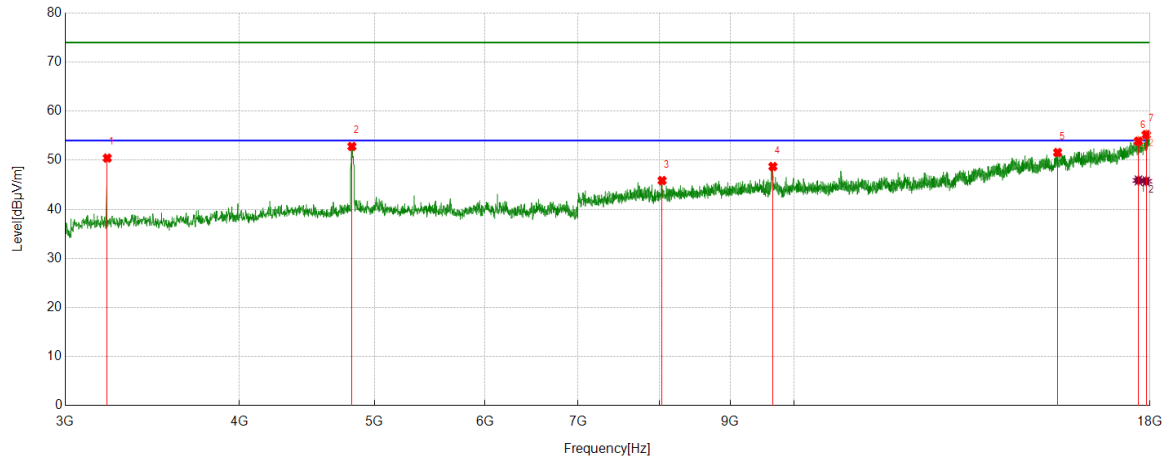
No.	Frequency	Reading Level	Correct Factor	Result	Limit	Margin	Remark
	[MHz]	[dBuV]	[dB/m]	[dBuV/m]	[dBuV/m]	[dB]	
1	3281.2852	61.79	-9.42	52.37	74.00	-21.63	Vertical
2	4923.9905	58.84	-3.88	54.96	74.00	-19.04	Vertical
3	8576.9471	43.41	2.30	45.71	74.00	-28.29	Vertical
4	10362.1703	43.19	4.25	47.44	74.00	-26.56	Vertical
5	14840.23	39.39	12.01	51.40	74.00	-22.60	Vertical
6	17713.0891	36.81	17.77	54.58	74.00	-19.42	Vertical
7	17924.9906	36.59	18.71	55.30	74.00	-18.70	Vertical

AV Result:

No.	Frequency	Reading Level	Correct Factor	Result	Limit	Margin	Remark
	[MHz]	[dBuV]	[dB/m]	[dBuV/m]	[dBuV/m]	[dB]	
1	4923.9905	52.30	-3.88	48.42	54.00	-5.58	Vertical
2	17713.0891	27.04	17.77	44.81	54.00	-9.19	Vertical
3	17924.9906	26.41	18.71	45.12	54.00	-8.88	Vertical

- Note: 1. Measurement = Reading Level + Correct Factor,
Correct Factor = Antenna Factor + Loss (Cable + Filter) – Amplifier Gain.
- If Peak Result complies with AV limit, AV Result is deemed to comply with AV limit.
 - Peak detector: RBW: 1 MHz, VBW: 3 MHz.
 - Average detector: RBW: 1 MHz, VBW: 1/T MHz(refer to clause 7.1.).
 - For above 3GHz part, filter losses were only considered in the spurious frequency bands and the authorized band was not corrected for HPF losses.
 - Only the worst case emission was recorded, if it complies with the limit, the other emissions deemed to comply with the limit.

Test Mode	Channel	Polarization	Verdict
11G	LCH	Horizontal	PASS



PK Result:

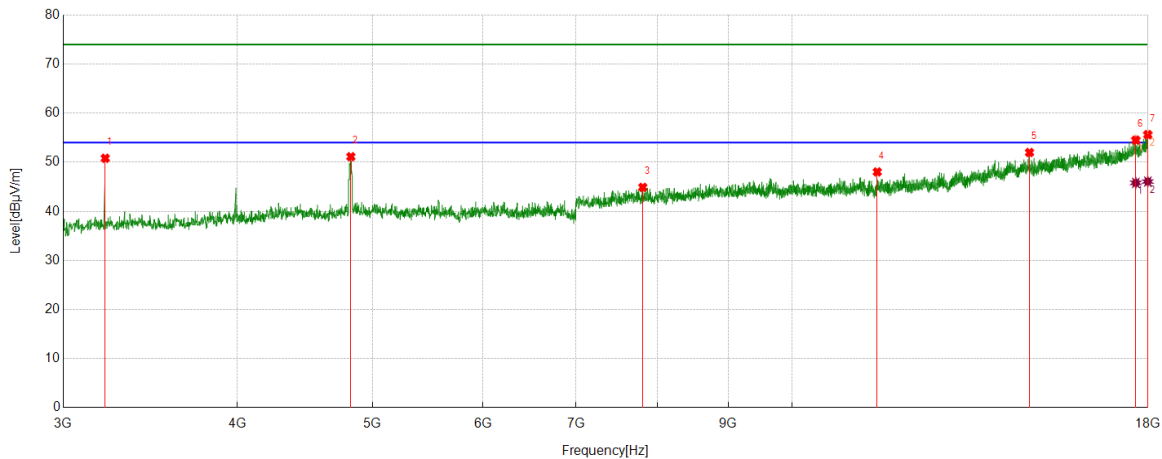
No.	Frequency	Reading Level	Correct Factor	Result	Limit	Margin	Remark
	[MHz]	[dBuV]	[dB/m]	[dBuV/m]	[dBuV/m]	[dB]	
1	3215.652	59.82	-9.38	50.44	74.00	-23.56	Horizontal
2	4817.1021	57.00	-4.19	52.81	74.00	-21.19	Horizontal
3	8040.6301	43.57	2.29	45.86	74.00	-28.14	Horizontal
4	9655.2069	45.00	3.72	48.72	74.00	-25.28	Horizontal
5	15453.4317	38.66	12.91	51.57	74.00	-22.43	Horizontal
6	17658.7073	36.11	17.77	53.88	74.00	-20.12	Horizontal
7	17891.2364	35.97	19.25	55.22	74.00	-18.78	Horizontal

AV Result:

No.	Frequency	Reading Level	Correct Factor	Result	Limit	Margin	Remark
	[MHz]	[dBuV]	[dB/m]	[dBuV/m]	[dBuV/m]	[dB]	
1	17658.7073	28.12	17.77	45.89	54.00	-8.11	Horizontal
2	17891.2364	26.48	19.25	45.73	54.00	-8.27	Horizontal

- Note: 1. Measurement = Reading Level + Correct Factor,
Correct Factor = Antenna Factor + Loss (Cable + Filter) – Amplifier Gain.
- If Peak Result complies with AV limit, AV Result is deemed to comply with AV limit.
 - Peak detector: RBW: 1 MHz, VBW: 3 MHz.
 - Average detector: RBW: 1 MHz, VBW: 1/T MHz(refer to clause 7.1.).
 - For above 3GHz part, filter losses were only considered in the spurious frequency bands and the authorized band was not corrected for HPF losses.
 - Only the worst case emission was recorded, if it complies with the limit, the other emissions deemed to comply with the limit.

Test Mode	Channel	Polarization	Verdict
11G	LCH	Vertical	PASS



PK Result:

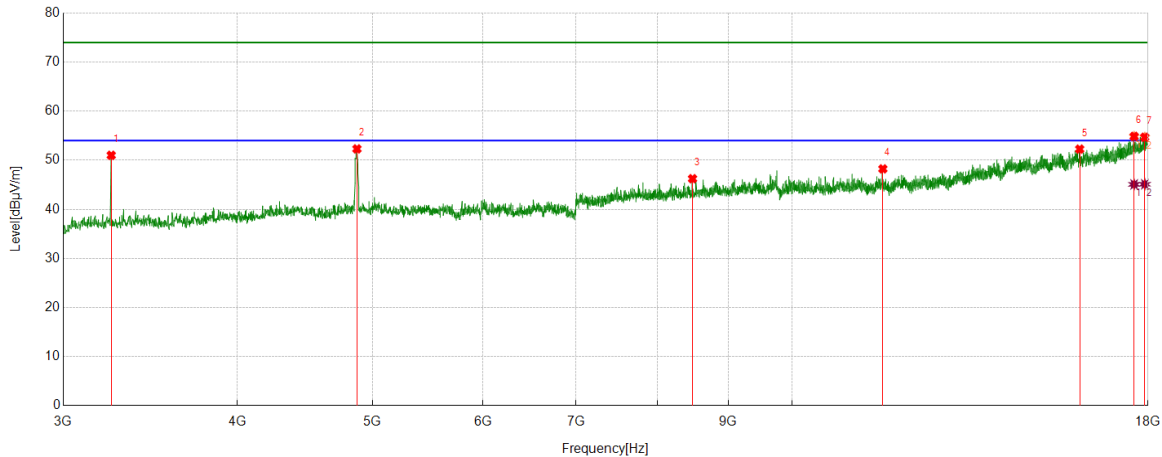
No.	Frequency	Reading Level	Correct Factor	Result	Limit	Margin	Remark
	[MHz]	[dBuV]	[dB/m]	[dBuV/m]	[dBuV/m]	[dB]	
1	3215.652	60.19	-9.38	50.81	74.00	-23.19	Vertical
2	4824.6031	55.13	-4.00	51.13	74.00	-22.87	Vertical
3	7813.7267	43.71	1.18	44.89	74.00	-29.11	Vertical
4	11509.8137	41.59	6.44	48.03	74.00	-25.97	Vertical
5	14800.8501	40.22	11.76	51.98	74.00	-22.02	Vertical
6	17641.8302	36.69	17.82	54.51	74.00	-19.49	Vertical
7	17994.3743	36.97	18.66	55.63	74.00	-18.37	Vertical

AV Result:

No.	Frequency	Reading Level	Correct Factor	Result	Limit	Margin	Remark
	[MHz]	[dBuV]	[dB/m]	[dBuV/m]	[dBuV/m]	[dB]	
1	17641.8302	27.98	17.82	45.80	54.00	-8.20	Vertical
2	17994.3743	27.41	18.66	46.07	54.00	-7.93	Vertical

- Note: 1. Measurement = Reading Level + Correct Factor,
Correct Factor = Antenna Factor + Loss (Cable + Filter) – Amplifier Gain.
- If Peak Result complies with AV limit, AV Result is deemed to comply with AV limit.
 - Peak detector: RBW: 1 MHz, VBW: 3 MHz.
 - Average detector: RBW: 1 MHz, VBW: 1/T MHz(refer to clause 7.1.).
 - For above 3GHz part, filter losses were only considered in the spurious frequency bands and the authorized band was not corrected for HPF losses.
 - Only the worst case emission was recorded, if it complies with the limit, the other emissions deemed to comply with the limit.

Test Mode	Channel	Polarization	Verdict
11G	MCH	Horizontal	PASS



PK Result:

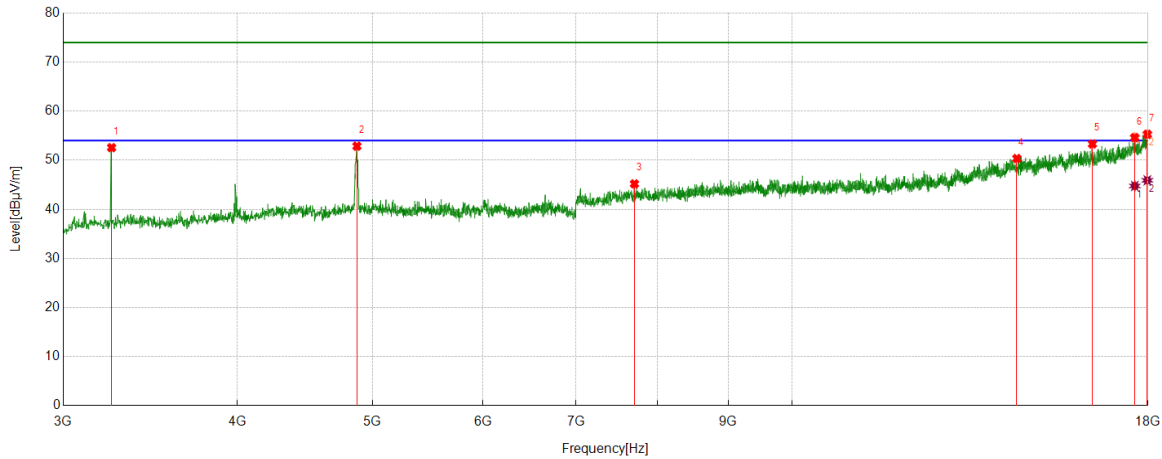
No.	Frequency	Reading Level	Correct Factor	Result	Limit	Margin	Remark
	[MHz]	[dBuV]	[dB/m]	[dBuV/m]	[dBuV/m]	[dB]	
1	3247.5309	60.57	-9.56	51.01	74.00	-22.99	Horizontal
2	4873.3592	55.93	-3.62	52.31	74.00	-21.69	Horizontal
3	8483.1854	44.20	2.04	46.24	74.00	-27.76	Horizontal
4	11616.7021	42.53	5.71	48.24	74.00	-25.76	Horizontal
5	16079.76	38.37	13.90	52.27	74.00	-21.73	Horizontal
6	17593.0741	37.22	17.64	54.86	74.00	-19.14	Horizontal
7	17906.2383	35.55	19.14	54.69	74.00	-19.31	Horizontal

AV Result:

No.	Frequency	Reading Level	Correct Factor	Result	Limit	Margin	Remark
	[MHz]	[dBuV]	[dB/m]	[dBuV/m]	[dBuV/m]	[dB]	
1	17593.0741	27.44	17.64	45.08	54.00	-8.92	Horizontal
2	17906.2383	25.97	19.14	45.11	54.00	-8.89	Horizontal

- Note: 1. Measurement = Reading Level + Correct Factor,
Correct Factor = Antenna Factor + Loss (Cable + Filter) – Amplifier Gain.
- If Peak Result complies with AV limit, AV Result is deemed to comply with AV limit.
 - Peak detector: RBW: 1 MHz, VBW: 3 MHz.
 - Average detector: RBW: 1 MHz, VBW: 1/T MHz(refer to clause 7.1.).
 - For above 3GHz part, filter losses were only considered in the spurious frequency bands and the authorized band was not corrected for HPF losses.
 - Only the worst case emission was recorded, if it complies with the limit, the other emissions deemed to comply with the limit.

Test Mode	Channel	Polarization	Verdict
11G	MCH	Vertical	PASS



PK Result:

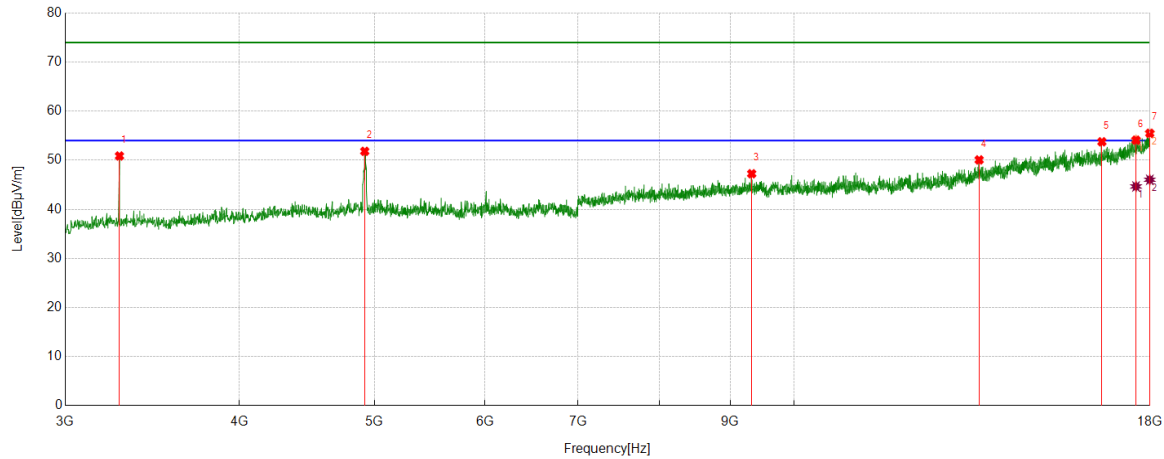
No.	Frequency	Reading Level	Correct Factor	Result	Limit	Margin	Remark
	[MHz]	[dBuV]	[dB/m]	[dBuV/m]	[dBuV/m]	[dB]	
1	3249.4062	62.23	-9.66	52.57	74.00	-21.43	Vertical
2	4873.3592	56.49	-3.62	52.87	74.00	-21.13	Vertical
3	7706.8384	43.84	1.35	45.19	74.00	-28.81	Vertical
4	14493.3117	38.79	11.56	50.35	74.00	-23.65	Vertical
5	16422.9279	38.91	14.40	53.31	74.00	-20.69	Vertical
6	17611.8265	37.01	17.61	54.62	74.00	-19.38	Vertical
7	17981.2477	36.64	18.65	55.29	74.00	-18.71	Vertical

AV Result:

No.	Frequency	Reading Level	Correct Factor	Result	Limit	Margin	Remark
	[MHz]	[dBuV]	[dB/m]	[dBuV/m]	[dBuV/m]	[dB]	
1	17611.8265	27.15	17.61	44.76	54.00	-9.24	Vertical
2	17981.2477	27.26	18.65	45.91	54.00	-8.09	Vertical

- Note: 1. Measurement = Reading Level + Correct Factor,
Correct Factor = Antenna Factor + Loss (Cable + Filter) – Amplifier Gain.
- If Peak Result complies with AV limit, AV Result is deemed to comply with AV limit.
 - Peak detector: RBW: 1 MHz, VBW: 3 MHz.
 - Average detector: RBW: 1 MHz, VBW: 1/T MHz(refer to clause 7.1.).
 - For above 3GHz part, filter losses were only considered in the spurious frequency bands and the authorized band was not corrected for HPF losses.
 - Only the worst case emission was recorded, if it complies with the limit, the other emissions deemed to comply with the limit.

Test Mode	Channel	Polarization	Verdict
11G	HCH	Horizontal	PASS



PK Result:

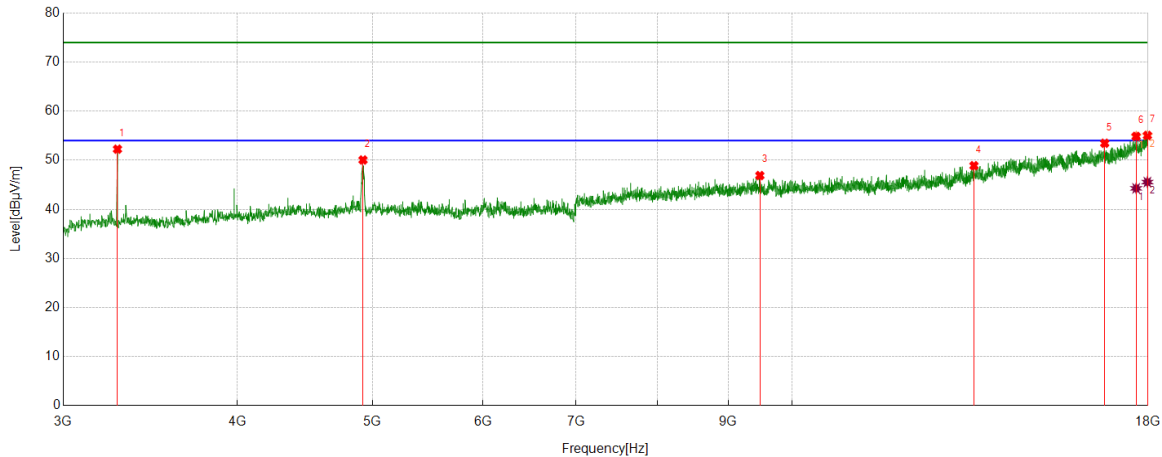
No.	Frequency	Reading Level	Correct Factor	Result	Limit	Margin	Remark
	[MHz]	[dBuV]	[dB/m]	[dBuV/m]	[dBuV/m]	[dB]	
1	3281.2852	60.29	-9.42	50.87	74.00	-23.13	Horizontal
2	4920.24	55.74	-3.92	51.82	74.00	-22.18	Horizontal
3	9323.2904	43.96	3.29	47.25	74.00	-26.75	Horizontal
4	13574.4468	40.88	9.19	50.07	74.00	-23.93	Horizontal
5	16625.4532	38.58	15.18	53.76	74.00	-20.24	Horizontal
6	17589.3237	36.44	17.65	54.09	74.00	-19.91	Horizontal
7	17994.3743	36.83	18.66	55.49	74.00	-18.51	Horizontal

AV Result:

No.	Frequency	Reading Level	Correct Factor	Result	Limit	Margin	Remark
	[MHz]	[dBuV]	[dB/m]	[dBuV/m]	[dBuV/m]	[dB]	
1	17589.3237	27.01	17.65	44.66	54.00	-9.34	Horizontal
2	17994.3743	27.37	18.66	46.03	54.00	-7.97	Horizontal

- Note: 1. Measurement = Reading Level + Correct Factor,
Correct Factor = Antenna Factor + Loss (Cable + Filter) – Amplifier Gain.
- If Peak Result complies with AV limit, AV Result is deemed to comply with AV limit.
 - Peak detector: RBW: 1 MHz, VBW: 3 MHz.
 - Average detector: RBW: 1 MHz, VBW: 1/T MHz(refer to clause 7.1.).
 - For above 3GHz part, filter losses were only considered in the spurious frequency bands and the authorized band was not corrected for HPF losses.
 - Only the worst case emission was recorded, if it complies with the limit, the other emissions deemed to comply with the limit.

Test Mode	Channel	Polarization	Verdict
11G	HCH	Vertical	PASS



PK Result:

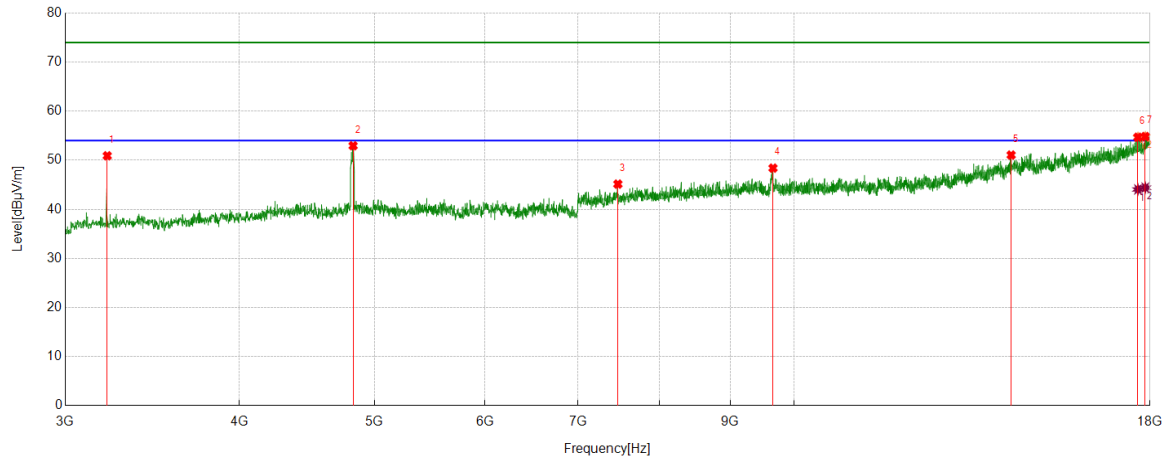
No.	Frequency	Reading Level	Correct Factor	Result	Limit	Margin	Remark
	[MHz]	[dBuV]	[dB/m]	[dBuV/m]	[dBuV/m]	[dB]	
1	3281.2852	61.68	-9.42	52.26	74.00	-21.74	Vertical
2	4922.1153	53.94	-3.89	50.05	74.00	-23.95	Vertical
3	9480.8101	43.50	3.38	46.88	74.00	-27.12	Vertical
4	13503.1879	39.95	8.94	48.89	74.00	-25.11	Vertical
5	16758.5948	38.36	15.10	53.46	74.00	-20.54	Vertical
6	17651.2064	37.13	17.73	54.86	74.00	-19.14	Vertical
7	17983.1229	36.41	18.64	55.05	74.00	-18.95	Vertical

AV Result:

No.	Frequency	Reading Level	Correct Factor	Result	Limit	Margin	Remark
	[MHz]	[dBuV]	[dB/m]	[dBuV/m]	[dBuV/m]	[dB]	
1	17651.2064	26.54	17.73	44.27	54.00	-9.73	Vertical
2	17983.1229	26.91	18.64	45.55	54.00	-8.45	Vertical

- Note: 1. Measurement = Reading Level + Correct Factor,
Correct Factor = Antenna Factor + Loss (Cable + Filter) – Amplifier Gain.
- If Peak Result complies with AV limit, AV Result is deemed to comply with AV limit.
 - Peak detector: RBW: 1 MHz, VBW: 3 MHz.
 - Average detector: RBW: 1 MHz, VBW: 1/T MHz(refer to clause 7.1.).
 - For above 3GHz part, filter losses were only considered in the spurious frequency bands and the authorized band was not corrected for HPF losses.
 - Only the worst case emission was recorded, if it complies with the limit, the other emissions deemed to comply with the limit.

Test Mode	Channel	Polarization	Verdict
11N HT20	LCH	Horizontal	PASS



PK Result:

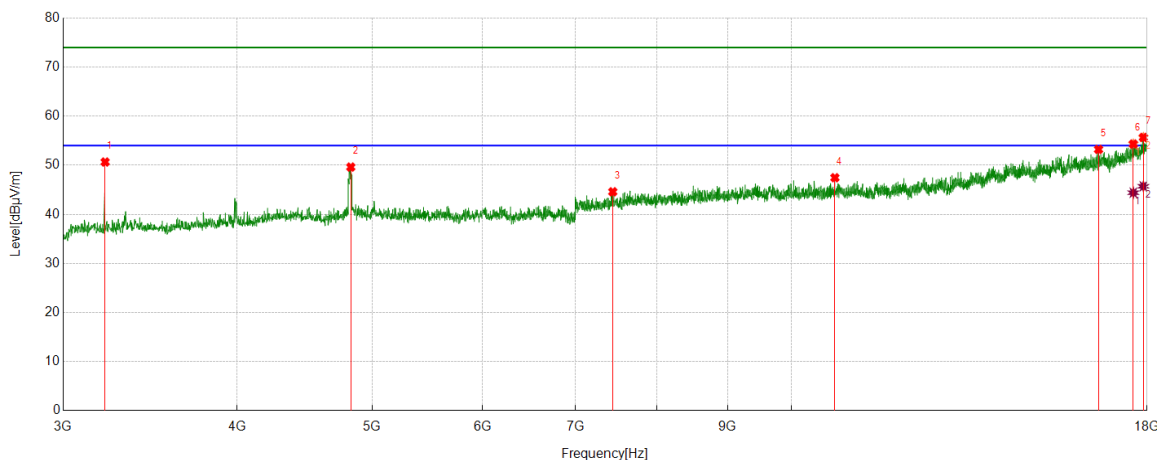
No.	Frequency	Reading Level	Correct Factor	Result	Limit	Margin	Remark
	[MHz]	[dBuV]	[dB/m]	[dBuV/m]	[dBuV/m]	[dB]	
1	3215.652	60.29	-9.38	50.91	74.00	-23.09	Horizontal
2	4826.4783	56.86	-3.91	52.95	74.00	-21.05	Horizontal
3	7474.3093	44.23	0.91	45.14	74.00	-28.86	Horizontal
4	9657.0821	44.70	3.70	48.40	74.00	-25.60	Horizontal
5	14311.4139	39.84	11.22	51.06	74.00	-22.94	Horizontal
6	17645.5807	36.91	17.78	54.69	74.00	-19.31	Horizontal
7	17861.2327	35.95	18.88	54.83	74.00	-19.17	Horizontal

AV Result:

No.	Frequency	Reading Level	Correct Factor	Result	Limit	Margin	Remark
	[MHz]	[dBuV]	[dB/m]	[dBuV/m]	[dBuV/m]	[dB]	
1	17645.5807	26.27	17.78	44.05	54.00	-9.95	Horizontal
2	17861.2327	25.53	18.88	44.41	54.00	-9.59	Horizontal

- Note: 1. Measurement = Reading Level + Correct Factor,
Correct Factor = Antenna Factor + Loss (Cable + Filter) – Amplifier Gain.
2. If Peak Result complies with AV limit, AV Result is deemed to comply with AV limit.
3. Peak detector: RBW: 1 MHz, VBW: 3 MHz.
4. Average detector: RBW: 1 MHz, VBW: 1/T MHz(refer to clause 7.1.).
5. For above 3GHz part, filter losses were only considered in the spurious frequency bands and the authorized band was not corrected for HPF losses.
6. Only the worst case emission was recorded, if it complies with the limit, the other emissions deemed to comply with the limit.

Test Mode	Channel	Polarization	Verdict
11N HT20	LCH	Vertical	PASS



PK Result:

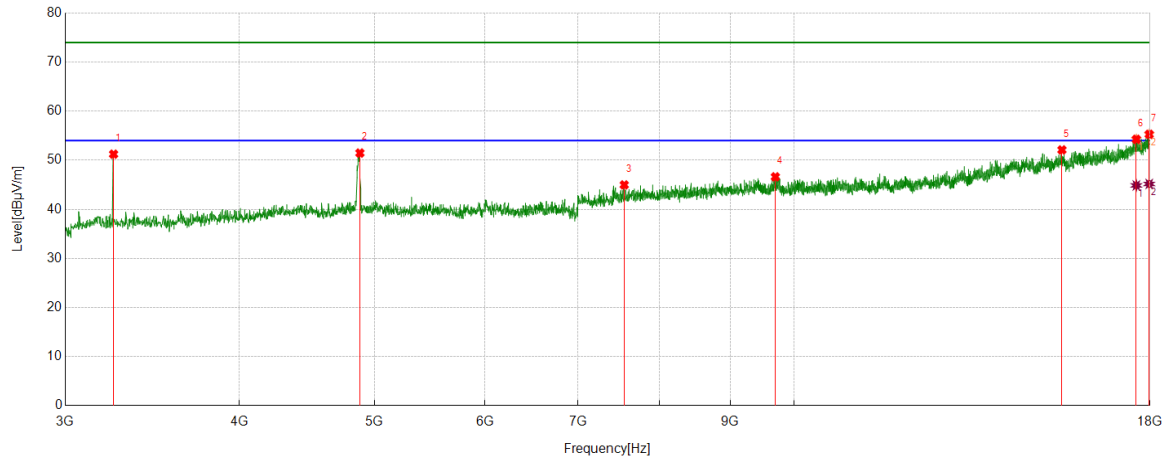
No.	Frequency	Reading Level	Correct Factor	Result	Limit	Margin	Remark
	[MHz]	[dBuV]	[dB/m]	[dBuV/m]	[dBuV/m]	[dB]	
1	3215.652	60.04	-9.38	50.66	74.00	-23.34	Vertical
2	4826.4783	53.54	-3.91	49.63	74.00	-24.37	Vertical
3	7442.4303	43.51	1.08	44.59	74.00	-29.41	Vertical
4	10744.7181	42.85	4.61	47.46	74.00	-26.54	Vertical
5	16614.2018	38.19	15.03	53.22	74.00	-20.78	Vertical
6	17596.8246	36.73	17.59	54.32	74.00	-19.68	Vertical
7	17891.2364	36.42	19.25	55.67	74.00	-18.33	Vertical

AV Result:

No.	Frequency	Reading Level	Correct Factor	Result	Limit	Margin	Remark
	[MHz]	[dBuV]	[dB/m]	[dBuV/m]	[dBuV/m]	[dB]	
1	17596.8246	26.81	17.59	44.40	54.00	-9.60	Vertical
2	17891.2364	26.46	19.25	45.71	54.00	-8.29	Vertical

- Note: 1. Measurement = Reading Level + Correct Factor,
Correct Factor = Antenna Factor + Loss (Cable + Filter) – Amplifier Gain.
2. If Peak Result complies with AV limit, AV Result is deemed to comply with AV limit.
3. Peak detector: RBW: 1 MHz, VBW: 3 MHz.
4. Average detector: RBW: 1 MHz, VBW: 1/T MHz(refer to clause 7.1.).
5. For above 3GHz part, filter losses were only considered in the spurious frequency bands and the authorized band was not corrected for HPF losses.
6. Only the worst case emission was recorded, if it complies with the limit, the other emissions deemed to comply with the limit.

Test Mode	Channel	Polarization	Verdict
11N HT20	MCH	Horizontal	PASS



PK Result:

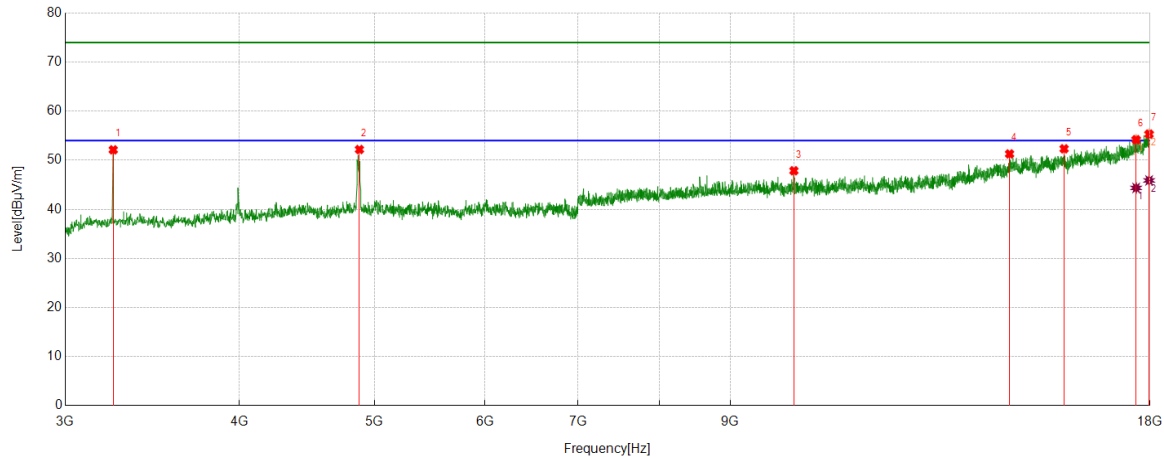
No.	Frequency	Reading Level	Correct Factor	Result	Limit	Margin	Remark
	[MHz]	[dBuV]	[dB/m]	[dBuV/m]	[dBuV/m]	[dB]	
1	3249.4062	60.90	-9.66	51.24	74.00	-22.76	Horizontal
2	4880.8601	54.95	-3.48	51.47	74.00	-22.53	Horizontal
3	7553.0691	44.76	0.22	44.98	74.00	-29.02	Horizontal
4	9694.5868	43.05	3.57	46.62	74.00	-27.38	Horizontal
5	15564.0705	39.58	12.53	52.11	74.00	-21.89	Horizontal
6	17598.6998	36.69	17.58	54.27	74.00	-19.73	Horizontal
7	17977.4972	36.62	18.67	55.29	74.00	-18.71	Horizontal

AV Result:

No.	Frequency	Reading Level	Correct Factor	Result	Limit	Margin	Remark
	[MHz]	[dBuV]	[dB/m]	[dBuV/m]	[dBuV/m]	[dB]	
1	17598.6998	27.29	17.58	44.87	54.00	-9.13	Horizontal
2	17977.4972	26.50	18.67	45.17	54.00	-8.83	Horizontal

- Note: 1. Measurement = Reading Level + Correct Factor,
Correct Factor = Antenna Factor + Loss (Cable + Filter) – Amplifier Gain.
2. If Peak Result complies with AV limit, AV Result is deemed to comply with AV limit.
3. Peak detector: RBW: 1 MHz, VBW: 3 MHz.
4. Average detector: RBW: 1 MHz, VBW: 1/T MHz(refer to clause 7.1.).
5. For above 3GHz part, filter losses were only considered in the spurious frequency bands and the authorized band was not corrected for HPF losses.
6. Only the worst case emission was recorded, if it complies with the limit, the other emissions deemed to comply with the limit.

Test Mode	Channel	Polarization	Verdict
11N HT20	MCH	Vertical	PASS


PK Result:

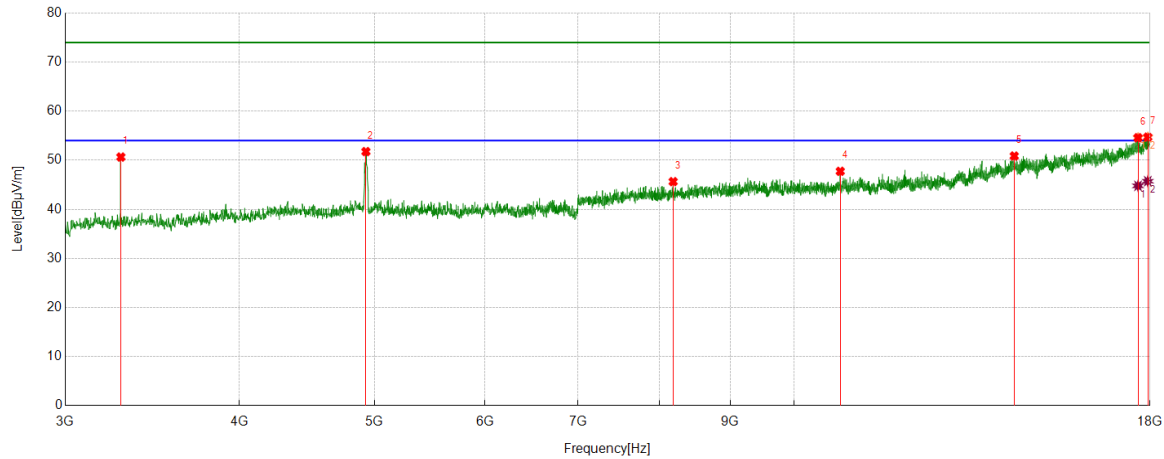
No.	Frequency	Reading Level	Correct Factor	Result	Limit	Margin	Remark
	[MHz]	[dBuV]	[dB/m]	[dBuV/m]	[dBuV/m]	[dB]	
1	3247.5309	61.68	-9.56	52.12	74.00	-21.88	Vertical
2	4877.1096	55.73	-3.54	52.19	74.00	-21.81	Vertical
3	9996.4996	44.04	3.82	47.86	74.00	-26.14	Vertical
4	14273.9092	39.35	11.94	51.29	74.00	-22.71	Vertical
5	15620.3275	38.88	13.45	52.33	74.00	-21.67	Vertical
6	17593.0741	36.55	17.64	54.19	74.00	-19.81	Vertical
7	17973.7467	36.65	18.68	55.33	74.00	-18.67	Vertical

AV Result:

No.	Frequency	Reading Level	Correct Factor	Result	Limit	Margin	Remark
	[MHz]	[dBuV]	[dB/m]	[dBuV/m]	[dBuV/m]	[dB]	
1	17593.0741	26.72	17.64	44.36	54.00	-9.64	Vertical
2	17973.7467	27.21	18.68	45.89	54.00	-8.11	Vertical

- Note: 1. Measurement = Reading Level + Correct Factor,
 Correct Factor = Antenna Factor + Loss (Cable + Filter) – Amplifier Gain.
- If Peak Result complies with AV limit, AV Result is deemed to comply with AV limit.
 - Peak detector: RBW: 1 MHz, VBW: 3 MHz.
 - Average detector: RBW: 1 MHz, VBW: 1/T MHz(refer to clause 7.1.).
 - For above 3GHz part, filter losses were only considered in the spurious frequency bands and the authorized band was not corrected for HPF losses.
 - Only the worst case emission was recorded, if it complies with the limit, the other emissions deemed to comply with the limit.

Test Mode	Channel	Polarization	Verdict
11N HT20	HCH	Horizontal	PASS



PK Result:

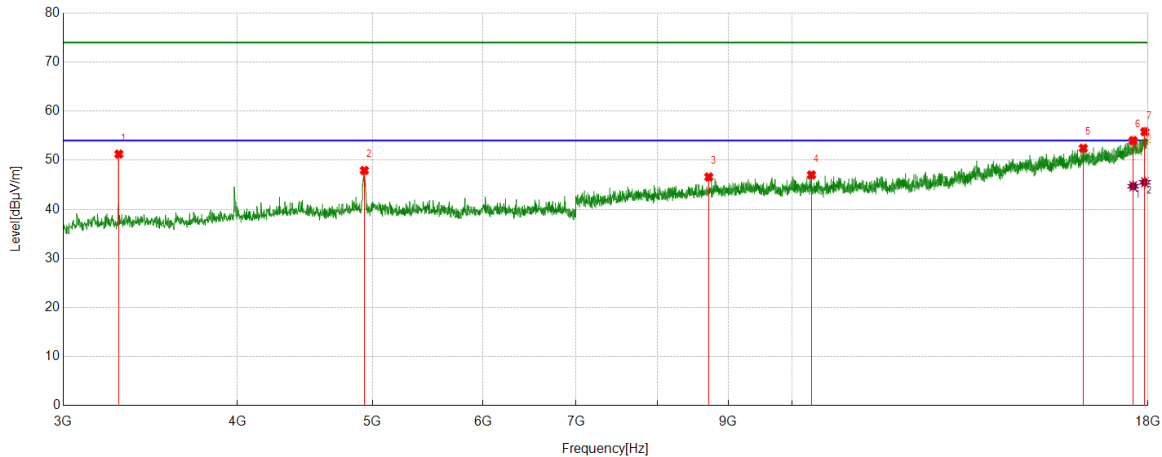
No.	Frequency	Reading Level	Correct Factor	Result	Limit	Margin	Remark
	[MHz]	[dBuV]	[dB/m]	[dBuV/m]	[dBuV/m]	[dB]	
1	3288.7861	60.29	-9.64	50.65	74.00	-23.35	Horizontal
2	4929.6162	55.57	-3.81	51.76	74.00	-22.24	Horizontal
3	8188.7736	43.51	2.13	45.64	74.00	-28.36	Horizontal
4	10791.599	43.41	4.34	47.75	74.00	-26.25	Horizontal
5	14384.5481	39.39	11.47	50.86	74.00	-23.14	Horizontal
6	17647.4559	36.83	17.76	54.59	74.00	-19.41	Horizontal
7	17934.3668	36.03	18.68	54.71	74.00	-19.29	Horizontal

AV Result:

No.	Frequency	Reading Level	Correct Factor	Result	Limit	Margin	Remark
	[MHz]	[dBuV]	[dB/m]	[dBuV/m]	[dBuV/m]	[dB]	
1	17647.4559	27.02	17.76	44.78	54.00	-9.22	Horizontal
2	17934.3668	27.05	18.68	45.73	54.00	-8.27	Horizontal

- Note: 1. Measurement = Reading Level + Correct Factor,
Correct Factor = Antenna Factor + Loss (Cable + Filter) – Amplifier Gain.
- If Peak Result complies with AV limit, AV Result is deemed to comply with AV limit.
 - Peak detector: RBW: 1 MHz, VBW: 3 MHz.
 - Average detector: RBW: 1 MHz, VBW: 1/T MHz(refer to clause 7.1.).
 - For above 3GHz part, filter losses were only considered in the spurious frequency bands and the authorized band was not corrected for HPF losses.
 - Only the worst case emission was recorded, if it complies with the limit, the other emissions deemed to comply with the limit.

Test Mode	Channel	Polarization	Verdict
11N HT20	HCH	Vertical	PASS



PK Result:

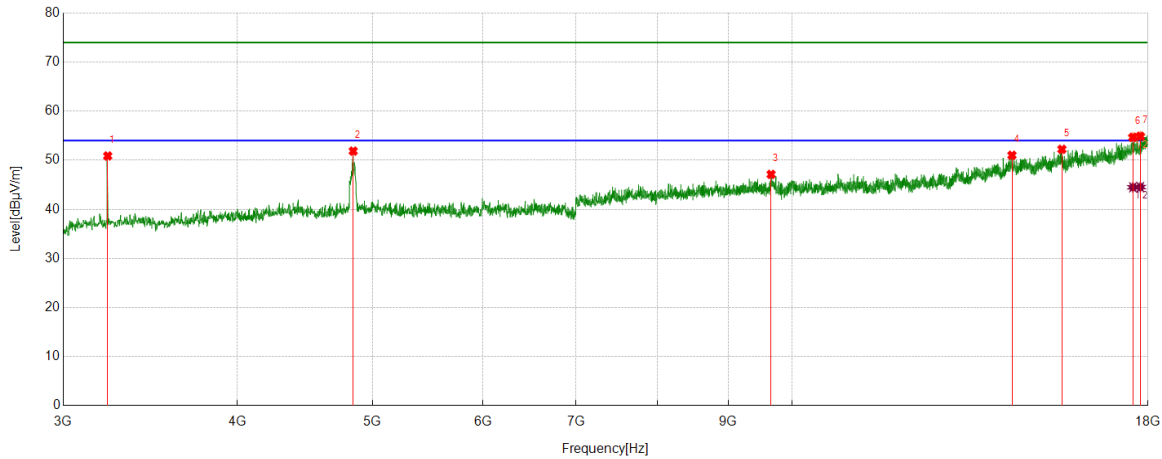
No.	Frequency	Reading Level	Correct Factor	Result	Limit	Margin	Remark
	[MHz]	[dBuV]	[dB/m]	[dBuV/m]	[dBuV/m]	[dB]	
1	3288.7861	60.90	-9.64	51.26	74.00	-22.74	Vertical
2	4933.3667	51.75	-3.83	47.92	74.00	-26.08	Vertical
3	8713.8392	44.23	2.36	46.59	74.00	-27.41	Vertical
4	10324.6656	42.98	4.03	47.01	74.00	-26.99	Vertical
5	16175.3969	38.12	14.33	52.45	74.00	-21.55	Vertical
6	17564.9456	36.75	17.24	53.99	74.00	-20.01	Vertical
7	17908.1135	36.73	19.08	55.81	74.00	-18.19	Vertical

AV Result:

No.	Frequency	Reading Level	Correct Factor	Result	Limit	Margin	Remark
	[MHz]	[dBuV]	[dB/m]	[dBuV/m]	[dBuV/m]	[dB]	
1	17564.9456	27.47	17.24	44.71	54.00	-9.29	Vertical
2	17908.1135	26.42	19.08	45.50	54.00	-8.50	Vertical

- Note: 1. Measurement = Reading Level + Correct Factor,
Correct Factor = Antenna Factor + Loss (Cable + Filter) – Amplifier Gain.
2. If Peak Result complies with AV limit, AV Result is deemed to comply with AV limit.
3. Peak detector: RBW: 1 MHz, VBW: 3 MHz.
4. Average detector: RBW: 1 MHz, VBW: 1/T MHz(refer to clause 7.1.).
5. For above 3GHz part, filter losses were only considered in the spurious frequency bands and the authorized band was not corrected for HPF losses.
6. Only the worst case emission was recorded, if it complies with the limit, the other emissions deemed to comply with the limit.

Test Mode	Channel	Polarization	Verdict
11N HT40	LCH	Horizontal	PASS



PK Result:

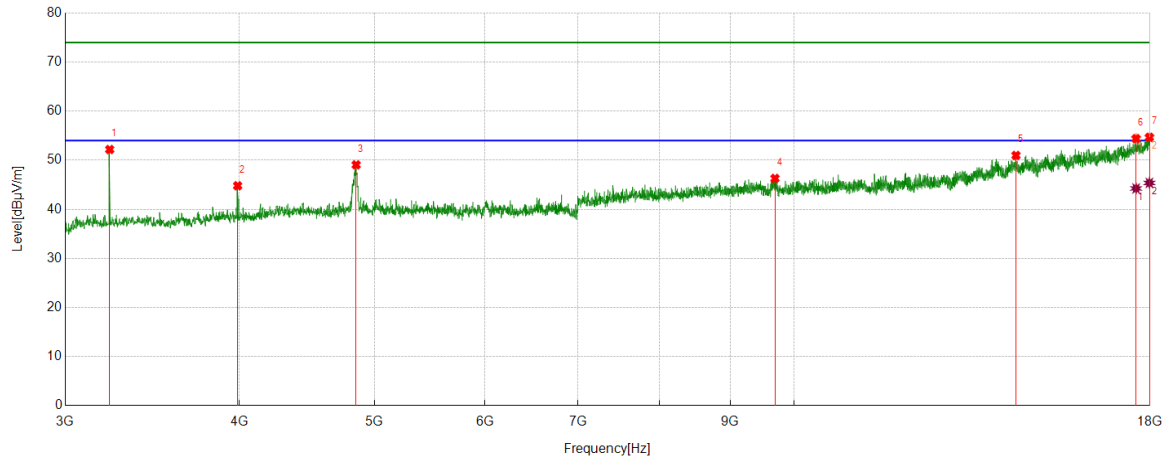
No.	Frequency	Reading Level	Correct Factor	Result	Limit	Margin	Remark
	[MHz]	[dBuV]	[dB/m]	[dBuV/m]	[dBuV/m]	[dB]	
1	3228.7786	60.16	-9.29	50.87	74.00	-23.13	Horizontal
2	4843.3554	55.49	-3.63	51.86	74.00	-22.14	Horizontal
3	9658.9574	43.44	3.68	47.12	74.00	-26.88	Horizontal
4	14378.9224	39.78	11.23	51.01	74.00	-22.99	Horizontal
5	15614.7018	38.78	13.45	52.23	74.00	-21.77	Horizontal
6	17557.4447	37.59	17.08	54.67	74.00	-19.33	Horizontal
7	17773.0966	36.81	18.08	54.89	74.00	-19.11	Horizontal

AV Result:

No.	Frequency	Reading Level	Correct Factor	Result	Limit	Margin	Remark
	[MHz]	[dBuV]	[dB/m]	[dBuV/m]	[dBuV/m]	[dB]	
1	17557.4447	27.41	17.08	44.49	54.00	-9.51	Horizontal
2	17773.0966	26.46	18.08	44.54	54.00	-9.46	Horizontal

- Note: 1. Measurement = Reading Level + Correct Factor,
Correct Factor = Antenna Factor + Loss (Cable + Filter) – Amplifier Gain.
- If Peak Result complies with AV limit, AV Result is deemed to comply with AV limit.
 - Peak detector: RBW: 1 MHz, VBW: 3 MHz.
 - Average detector: RBW: 1 MHz, VBW: 1/T MHz(refer to clause 7.1.).
 - For above 3GHz part, filter losses were only considered in the spurious frequency bands and the authorized band was not corrected for HPF losses.
 - Only the worst case emission was recorded, if it complies with the limit, the other emissions deemed to comply with the limit.

Test Mode	Channel	Polarization	Verdict
11N HT40	LCH	Vertical	PASS



PK Result:

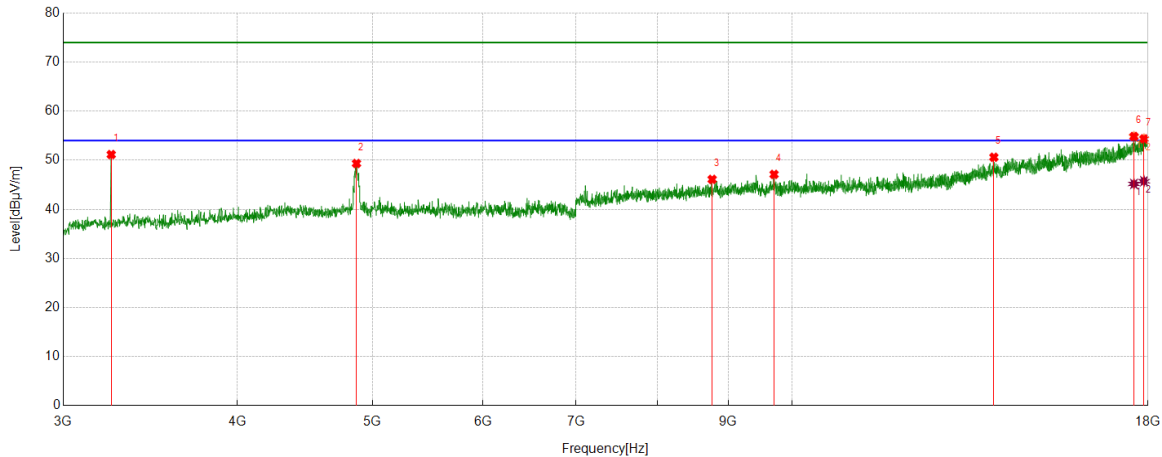
No.	Frequency	Reading Level	Correct Factor	Result	Limit	Margin	Remark
	[MHz]	[dBuV]	[dB/m]	[dBuV/m]	[dBuV/m]	[dB]	
1	3228.7786	61.48	-9.29	52.19	74.00	-21.81	Vertical
2	3988.2485	51.84	-7.04	44.80	74.00	-29.20	Vertical
3	4850.8564	52.61	-3.55	49.06	74.00	-24.94	Vertical
4	9688.9611	42.71	3.59	46.30	74.00	-27.70	Vertical
5	14425.8032	39.31	11.67	50.98	74.00	-23.02	Vertical
6	17591.1989	36.75	17.65	54.40	74.00	-19.60	Vertical
7	17983.1229	36.03	18.64	54.67	74.00	-19.33	Vertical

AV Result:

No.	Frequency	Reading Level	Correct Factor	Result	Limit	Margin	Remark
	[MHz]	[dBuV]	[dB/m]	[dBuV/m]	[dBuV/m]	[dB]	
1	17591.1989	26.60	17.65	44.25	54.00	-9.75	Vertical
2	17983.1229	26.74	18.64	45.38	54.00	-8.62	Vertical

- Note: 1. Measurement = Reading Level + Correct Factor,
Correct Factor = Antenna Factor + Loss (Cable + Filter) – Amplifier Gain.
- If Peak Result complies with AV limit, AV Result is deemed to comply with AV limit.
 - Peak detector: RBW: 1 MHz, VBW: 3 MHz.
 - Average detector: RBW: 1 MHz, VBW: 1/T MHz(refer to clause 7.1.).
 - For above 3GHz part, filter losses were only considered in the spurious frequency bands and the authorized band was not corrected for HPF losses.
 - Only the worst case emission was recorded, if it complies with the limit, the other emissions deemed to comply with the limit.

Test Mode	Channel	Polarization	Verdict
11N HT40	MCH	Horizontal	PASS



PK Result:

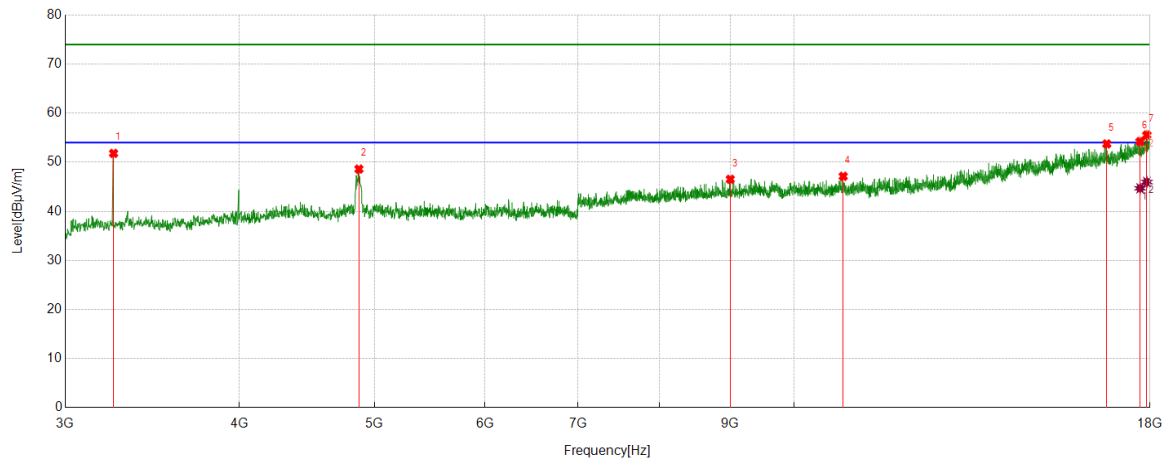
No.	Frequency	Reading Level	Correct Factor	Result	Limit	Margin	Remark
	[MHz]	[dBuV]	[dB/m]	[dBuV/m]	[dBuV/m]	[dB]	
1	3247.5309	60.72	-9.56	51.16	74.00	-22.84	Horizontal
2	4869.6087	53.03	-3.69	49.34	74.00	-24.66	Horizontal
3	8762.5953	43.34	2.76	46.10	74.00	-27.90	Horizontal
4	9705.8382	43.52	3.60	47.12	74.00	-26.88	Horizontal
5	13955.1194	39.75	10.86	50.61	74.00	-23.39	Horizontal
6	17587.4484	37.26	17.58	54.84	74.00	-19.16	Horizontal
7	17881.8602	35.29	19.07	54.36	74.00	-19.64	Horizontal

AV Result:

No.	Frequency	Reading Level	Correct Factor	Result	Limit	Margin	Remark
	[MHz]	[dBuV]	[dB/m]	[dBuV/m]	[dBuV/m]	[dB]	
1	17587.4484	27.60	17.58	45.18	54.00	-8.82	Horizontal
2	17881.8602	26.66	19.07	45.73	54.00	-8.27	Horizontal

- Note: 1. Measurement = Reading Level + Correct Factor,
Correct Factor = Antenna Factor + Loss (Cable + Filter) – Amplifier Gain.
- If Peak Result complies with AV limit, AV Result is deemed to comply with AV limit.
 - Peak detector: RBW: 1 MHz, VBW: 3 MHz.
 - Average detector: RBW: 1 MHz, VBW: 1/T MHz(refer to clause 7.1.).
 - For above 3GHz part, filter losses were only considered in the spurious frequency bands and the authorized band was not corrected for HPF losses.
 - Only the worst case emission was recorded, if it complies with the limit, the other emissions deemed to comply with the limit.

Test Mode	Channel	Polarization	Verdict
11N HT40	MCH	Vertical	PASS


PK Result:

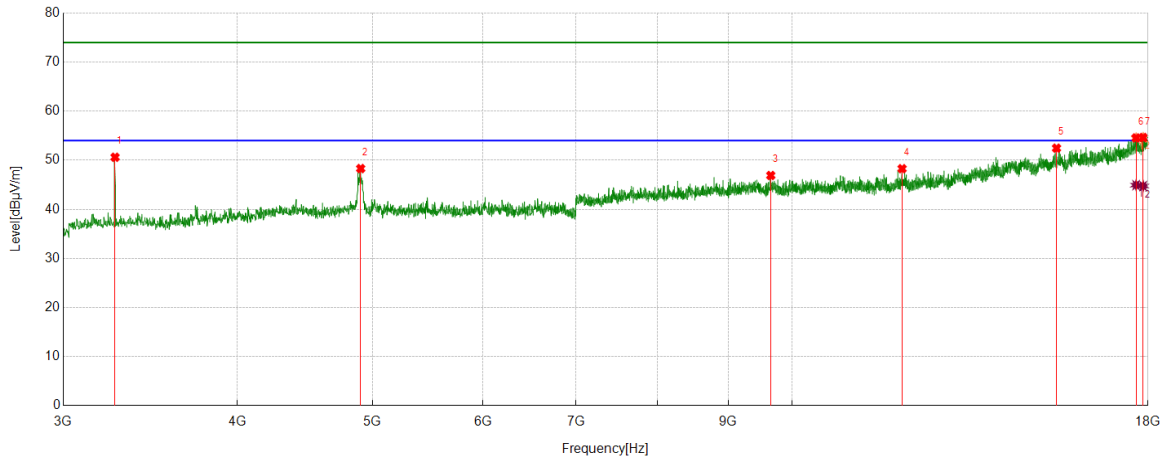
No.	Frequency	Reading Level	Correct Factor	Result	Limit	Margin	Remark
	[MHz]	[dBuV]	[dB/m]	[dBuV/m]	[dBuV/m]	[dB]	
1	3249.4062	61.47	-9.66	51.81	74.00	-22.19	Vertical
2	4873.3592	52.23	-3.62	48.61	74.00	-25.39	Vertical
3	8998.8749	44.17	2.36	46.53	74.00	-27.47	Vertical
4	10844.1055	42.64	4.49	47.13	74.00	-26.87	Vertical
5	16760.4701	38.61	15.12	53.73	74.00	-20.27	Vertical
6	17709.3387	36.32	17.89	54.21	74.00	-19.79	Vertical
7	17908.1135	36.46	19.08	55.54	74.00	-18.46	Vertical

AV Result:

No.	Frequency	Reading Level	Correct Factor	Result	Limit	Margin	Remark
	[MHz]	[dBuV]	[dB/m]	[dBuV/m]	[dBuV/m]	[dB]	
1	17709.3387	26.80	17.89	44.69	54.00	-9.31	Vertical
2	17908.1135	26.89	19.08	45.97	54.00	-8.03	Vertical

- Note: 1. Measurement = Reading Level + Correct Factor,
 Correct Factor = Antenna Factor + Loss (Cable + Filter) – Amplifier Gain.
- If Peak Result complies with AV limit, AV Result is deemed to comply with AV limit.
 - Peak detector: RBW: 1 MHz, VBW: 3 MHz.
 - Average detector: RBW: 1 MHz, VBW: 1/T MHz(refer to clause 7.1.).
 - For above 3GHz part, filter losses were only considered in the spurious frequency bands and the authorized band was not corrected for HPF losses.
 - Only the worst case emission was recorded, if it complies with the limit, the other emissions deemed to comply with the limit.

Test Mode	Channel	Polarization	Verdict
11N HT40	HCH	Horizontal	PASS



PK Result:

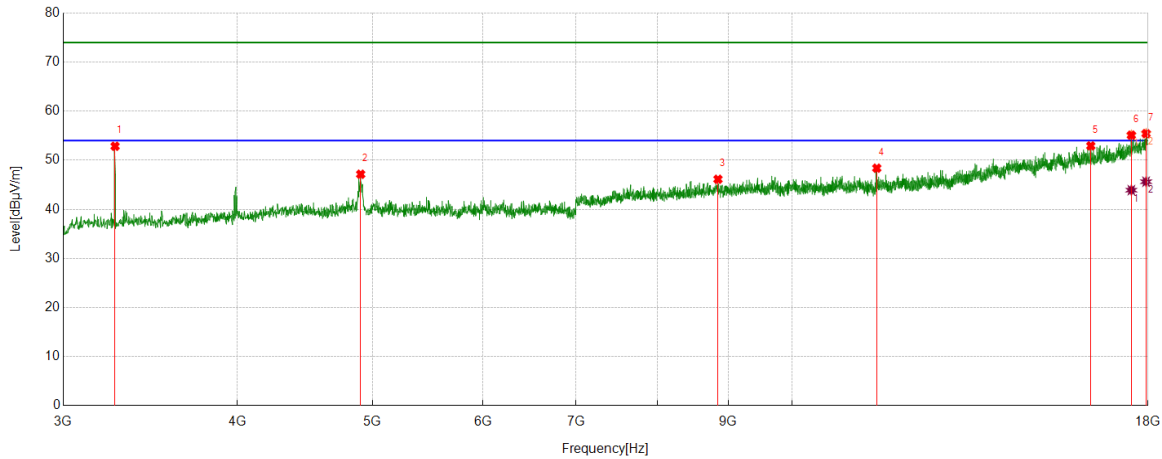
No.	Frequency	Reading Level	Correct Factor	Result	Limit	Margin	Remark
	[MHz]	[dBuV]	[dB/m]	[dBuV/m]	[dBuV/m]	[dB]	
1	3268.1585	60.21	-9.60	50.61	74.00	-23.39	Horizontal
2	4903.3629	52.11	-3.80	48.31	74.00	-25.69	Horizontal
3	9653.3317	43.16	3.74	46.90	74.00	-27.10	Horizontal
4	11991.749	41.94	6.34	48.28	74.00	-25.72	Horizontal
5	15475.9345	39.98	12.48	52.46	74.00	-21.54	Horizontal
6	17649.3312	36.81	17.74	54.55	74.00	-19.45	Horizontal
7	17857.4822	35.78	18.85	54.63	74.00	-19.37	Horizontal

AV Result:

No.	Frequency	Reading Level	Correct Factor	Result	Limit	Margin	Remark
	[MHz]	[dBuV]	[dB/m]	[dBuV/m]	[dBuV/m]	[dB]	
1	17649.3312	27.19	17.74	44.93	54.00	-9.07	Horizontal
2	17857.4822	25.89	18.85	44.74	54.00	-9.26	Horizontal

- Note: 1. Measurement = Reading Level + Correct Factor,
Correct Factor = Antenna Factor + Loss (Cable + Filter) – Amplifier Gain.
- If Peak Result complies with AV limit, AV Result is deemed to comply with AV limit.
 - Peak detector: RBW: 1 MHz, VBW: 3 MHz.
 - Average detector: RBW: 1 MHz, VBW: 1/T MHz(refer to clause 7.1.).
 - For above 3GHz part, filter losses were only considered in the spurious frequency bands and the authorized band was not corrected for HPF losses.
 - Only the worst case emission was recorded, if it complies with the limit, the other emissions deemed to comply with the limit.

Test Mode	Channel	Polarization	Verdict
11N HT40	HCH	Vertical	PASS



PK Result:

No.	Frequency	Reading Level	Correct Factor	Result	Limit	Margin	Remark
	[MHz]	[dBuV]	[dB/m]	[dBuV/m]	[dBuV/m]	[dB]	
1	3268.1585	62.45	-9.60	52.85	74.00	-21.15	Vertical
2	4903.3629	50.95	-3.80	47.15	74.00	-26.85	Vertical
3	8846.9809	43.38	2.75	46.13	74.00	-27.87	Vertical
4	11500.4376	42.29	6.10	48.39	74.00	-25.61	Vertical
5	16377.9222	38.65	14.28	52.93	74.00	-21.07	Vertical
6	17512.4391	37.90	17.21	55.11	74.00	-18.89	Vertical
7	17943.743	36.90	18.53	55.43	74.00	-18.57	Vertical

AV Result:

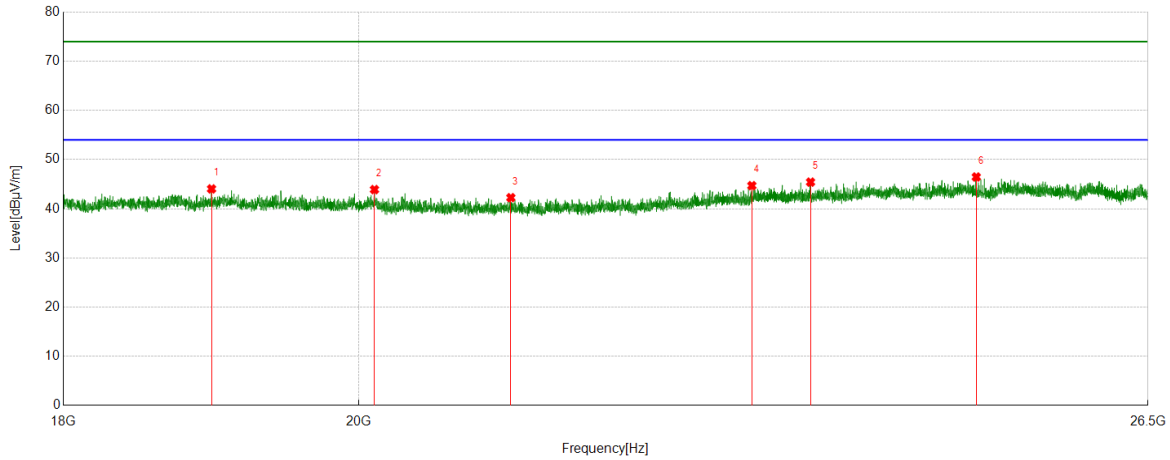
No.	Frequency	Reading Level	Correct Factor	Result	Limit	Margin	Remark
	[MHz]	[dBuV]	[dB/m]	[dBuV/m]	[dBuV/m]	[dB]	
1	17512.4391	26.70	17.21	43.91	54.00	-10.09	Vertical
2	17943.743	27.10	18.53	45.63	54.00	-8.37	Vertical

- Note: 1. Measurement = Reading Level + Correct Factor,
Correct Factor = Antenna Factor + Loss (Cable + Filter) – Amplifier Gain.
- If Peak Result complies with AV limit, AV Result is deemed to comply with AV limit.
 - Peak detector: RBW: 1 MHz, VBW: 3 MHz.
 - Average detector: RBW: 1 MHz, VBW: 1/T MHz(refer to clause 7.1.).
 - For above 3GHz part, filter losses were only considered in the spurious frequency bands and the authorized band was not corrected for HPF losses.
 - Only the worst case emission was recorded, if it complies with the limit, the other emissions deemed to comply with the limit.

Part 3: 18GHz~26.5GHz

SPURIOUS EMISSIONS 18GHz TO 26.5GHz (WORST-CASE CONFIGURATION)

Test Mode	Channel	Polarization	Verdict
11B	LCH	Horizontal	PASS

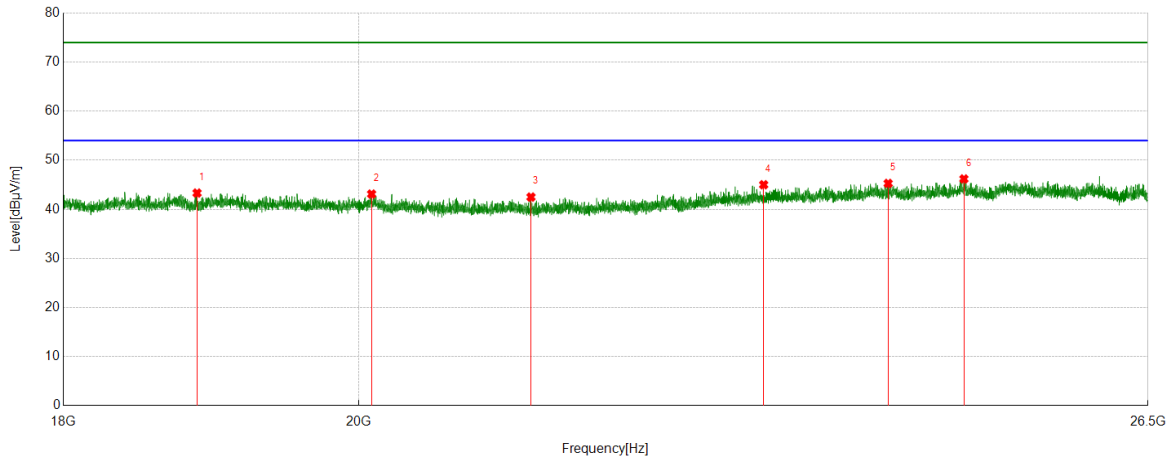


PK Result:

No.	Frequency	Reading Level	Correct Factor	Result	Limit	Margin	Remark
	[MHz]	[dBuV]	[dB/m]	[dBuV/m]	[dBuV/m]	[dB]	
1	18977.5978	50.14	-6.10	44.04	74.00	-29.96	Horizontal
2	20112.4612	49.08	-5.18	43.90	74.00	-30.10	Horizontal
3	21114.7115	48.24	-5.98	42.26	74.00	-31.74	Horizontal
4	23009.551	48.22	-3.52	44.70	74.00	-29.30	Horizontal
5	23495.7996	48.57	-3.15	45.42	74.00	-28.58	Horizontal
6	24926.4926	49.97	-3.51	46.46	74.00	-27.54	Horizontal

- Note: 1. If Peak Result complies with AV limit, AV Result is deemed to comply with AV limit.
 2. Test setup: RBW: 1 MHz, VBW: 3 MHz, Sweep time: auto.
 3. Measurement = Reading Level + Correct Factor,
 Correct Factor = Antenna Factor + Loss (Cable) – Amplifier Gain.
 4. Only the worst case emission was recorded, if it complies with the limit, the other emissions deemed to comply with the limit.

Test Mode	Channel	Polarization	Verdict
11B	LCH	Vertical	PASS



PK Result:

No.	Frequency	Reading Level	Correct Factor	Result	Limit	Margin	Remark
	[MHz]	[dBuV]	[dB/m]	[dBuV/m]	[dBuV/m]	[dB]	
1	18879.838	49.48	-6.16	43.32	74.00	-30.68	Vertical
2	20092.0592	48.26	-5.15	43.11	74.00	-30.89	Vertical
3	21266.8767	48.41	-5.91	42.50	74.00	-31.50	Vertical
4	23106.4606	48.48	-3.47	45.01	74.00	-28.99	Vertical
5	24155.4655	48.03	-2.75	45.28	74.00	-28.72	Vertical
6	24816.8317	49.54	-3.35	46.19	74.00	-27.81	Vertical

- Note: 1. If Peak Result complies with AV limit, AV Result is deemed to comply with AV limit.
 2. Test setup: RBW: 1 MHz, VBW: 3 MHz, Sweep time: auto.
 3. Measurement = Reading Level + Correct Factor,
 Correct Factor = Antenna Factor + Loss (Cable) – Amplifier Gain.
 4. Only the worst case emission was recorded, if it complies with the limit, the other emissions deemed to comply with the limit.