

VEC
Model No. SP-350BT
Bluetooth Transcription Headset



**User's
Reference Manual**

Please read this manual for information about using the product correctly and safely.

Features:

- Bluetooth Technology
- Lightweight
- Stereo Audio
- Built in Microphone
- Rechargeable Lithium Battery
- Multi Color L.E.D
 - Blinking Blue: Turned On
 - Blinking Red/Blue: Pairing Mode
 - Red: Charging – Blue: Fully Charged
 - Blinking Red: Low Battery Indicator
- 80' Wireless Range
- Battery Life: Approx. 8 hours of continued use
- Charging time: Approx. 1.5hrs

Includes:

- Charging Base
- 5V Power Cube with Micro USB Cable

Operating your SP-350BT:

Power Switch Function:

To turn ON press and hold the power button for 2 seconds. Blue LED will flash every 2 seconds when on. To turn OFF press and hold the power button for 2 seconds Red LED will flash on then off.

To PAIR to your devise, with the power off press and hold the power button for 4-5 seconds. Red/ Blue LED will flash. In the Bluetooth Set Up on your Computer/ Tablet/Smart Phone select **VEC_BT-350**

To Increase volume touch (+)
To decrease volume touch (-)

Charging:
Place the SP-350BT in the Charging Base, RED LED will be on during charging. LED will turn BLUE when charging is complete

Smartphone Functions:
Touch Power Button to pick up and hang up calls
Press Power Button for 2 seconds to refuse a call

Low Battery Indication:
Red LED blinks continuously with alarm indication

FCC Declaration of Conformity:

This devise complies with Part 15 of the FCC rules. Operations is subject to the following two conditions: (1) The device may not cause harmful interference, and (2) This device must accept any interference received. Including interference that may cause undesired operation

NOTE: The manufacturer is not responsible for any radio or TV interference caused by unauthorized modifications to this equipment. Such modifications could void the user's authority to operate this equipment



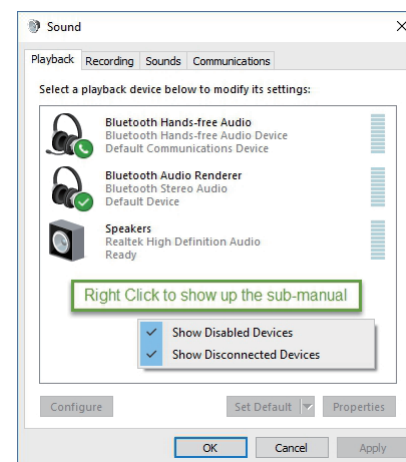
Limited Warranty:

The manufacturer warrants that this product will be free from defects in materials and workmanship under normal use and service for a period of 90 days from the date of receipt, provided that this limited warranty is extended only to the original purchaser and it subject to the following conditions, exclusions and limitations hereinafter set forth. This limited warranty shall be void if the product has any damage by accident or unreasonable use, neglect, improper maintenance or other causes.

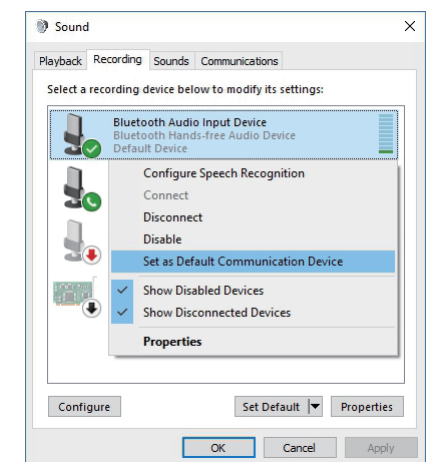
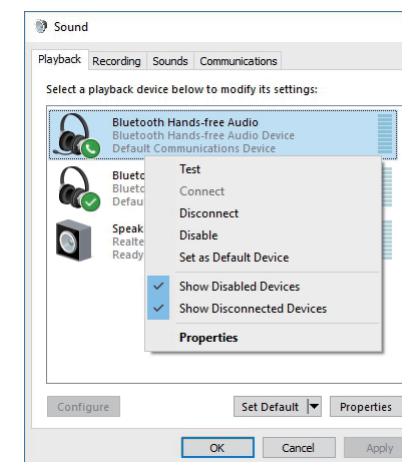
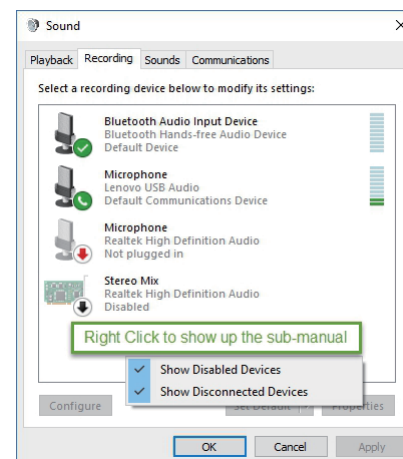
“Modifications not authorized by the manufacturer may void the users authority to operate this device”

Trouble Shooting Guide:

Q1. Why my headset does not have sound?



A1. Microsoft Windows may be prohibiting your Bluetooth devices in Sound Settings. Go to Control Panel- Sound Setting, right click on any space to show all disabled devices. And in the Playback Tab, select Bluetooth Hand Free-Audio as the default device. Click OK. Next go to the Record Tab and select Bluetooth Audio Input Device as the default devise, click OK.



FCC Declartion of Conformity

Note: This equipment has been tested and found to comply with the limits for a Class B digital device, pursuant to part 15 of the FCC Rules. These limits are designed to provide reasonable protection against harmful interference in a residential installation. This equipment generates uses and can radiate radio frequency energy and, if not installed and used in accordance with the instructions, may cause harmful interference to radio communications. However, there is no guarantee that interference will not occur in a particular installation. If this equipment does cause harmful interference to radio or television reception, which can be determined by turning the equipment off and on, the user is encouraged to try to correct the interference by one or more of the following measures:

- Reorient or relocate the receiving antenna.
- Increase the separation between the equipment and receiver.
- Connect the equipment into an outlet on a circuit different from that to which the receiver is connected.
- Consult the dealer or an experienced radio/TV technician for help.

The device has been evaluated to meet general RF exposure requirement. The device can be used in portable exposure condition without restriction.