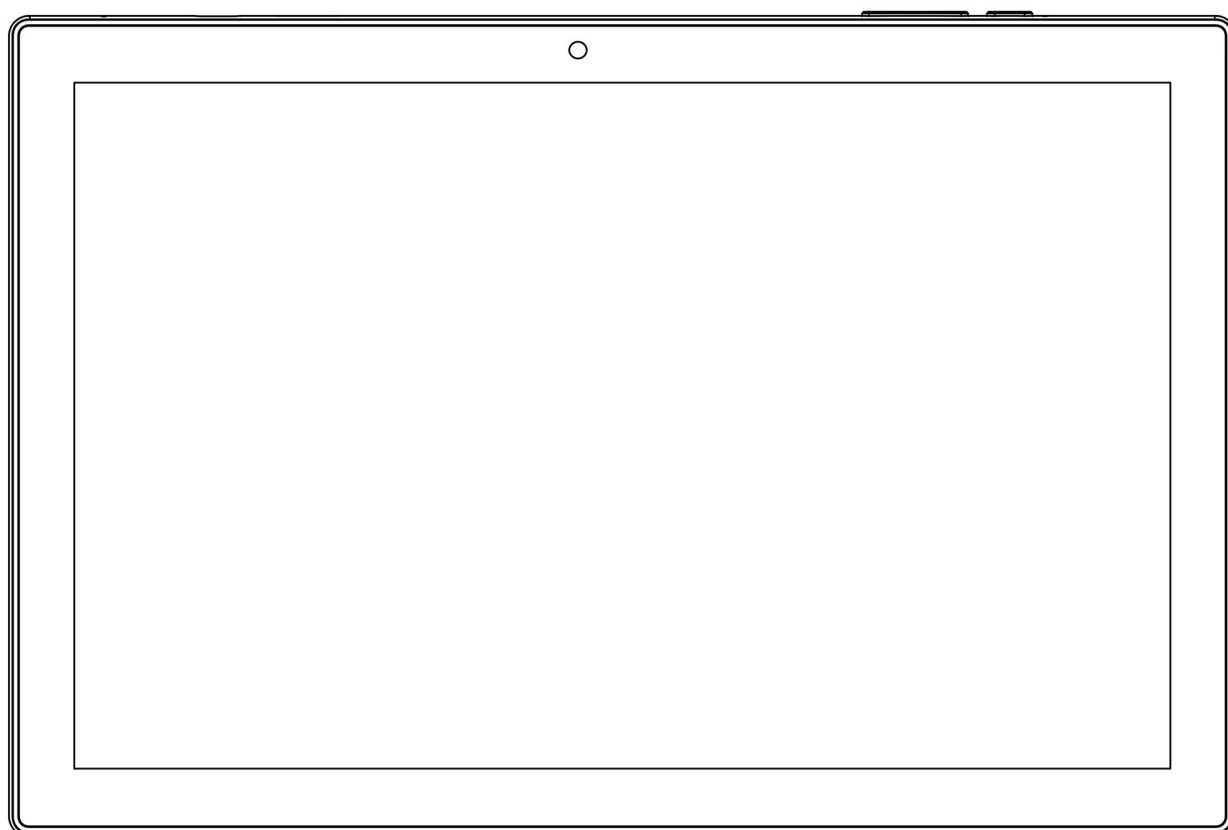


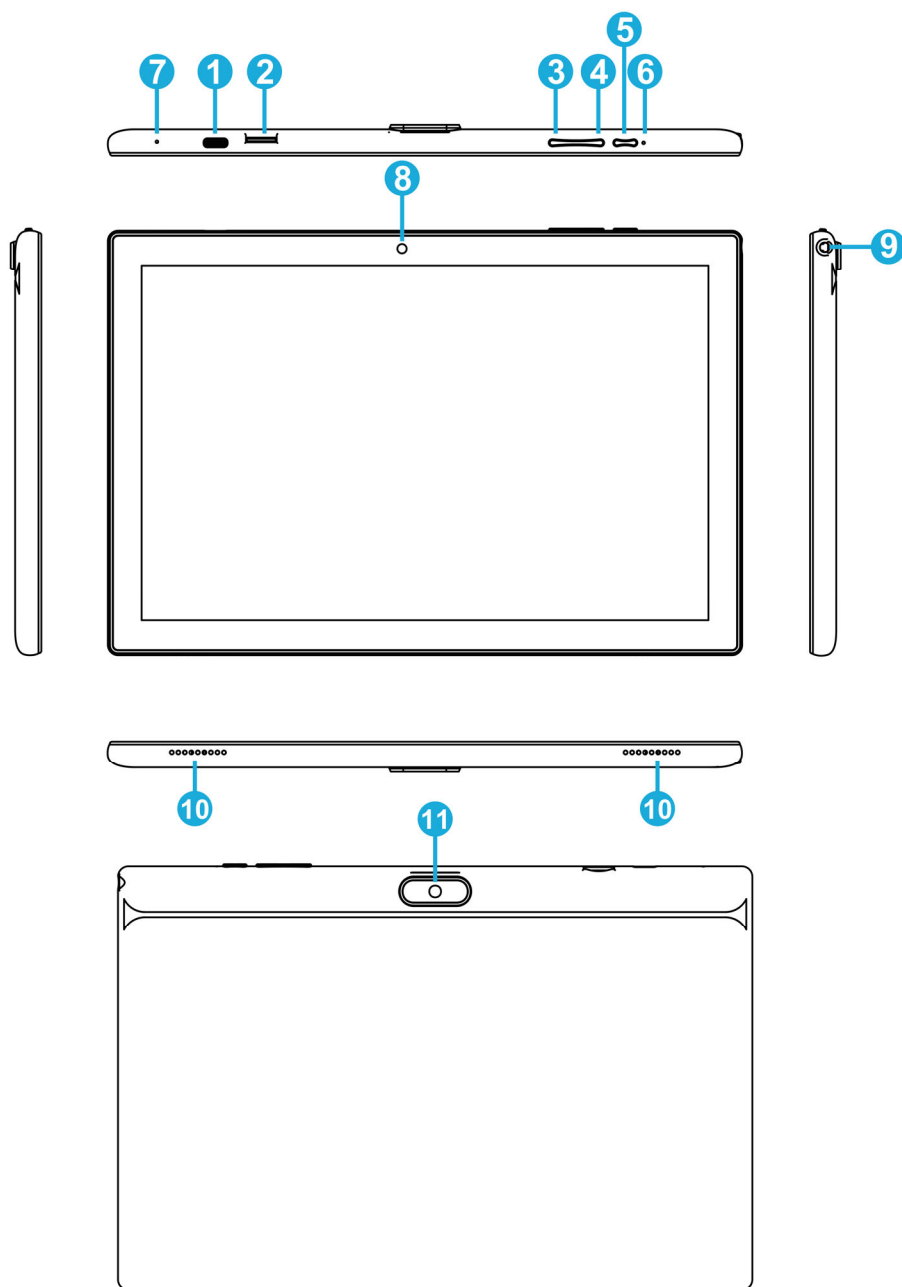
# ユーザマニュアル

10.1インチタブレットPC

YQ10S



# 製品概要



1. タイプCポート

2. メモリーカードスロット

3. 音量+

4. 音量-

5. 電源オン/オフ

6. リセット

7. マイク

8. 正面カメラ

9. ヘッドフォンジャック

10. 二人の話者

11. バックカメラ

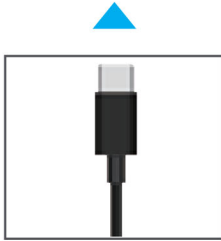
# 充電

最初の使用の前に6時間あなたのタブレットをullyに充電してください



付属のチャージャを使ってください

バッテリーインジケータは、デバイスが充電されて表示されます

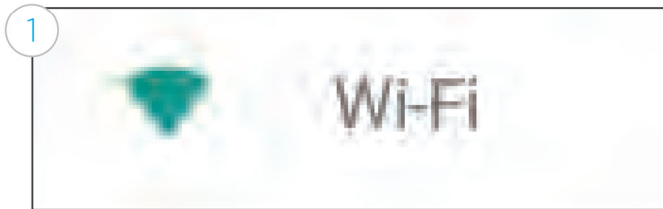


# スクリーン基本

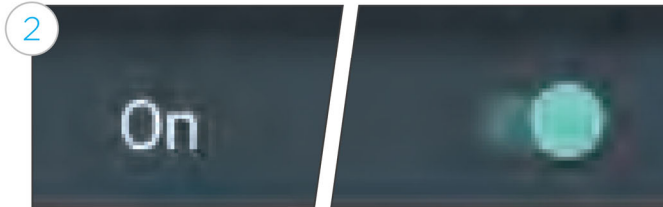


ホームを保持し、現在のアクセスをGoogleにスライド

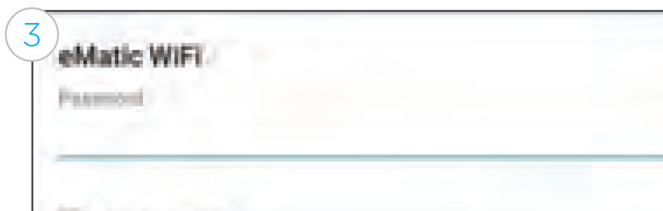
## Wi-Fi接続



アプリmenutapのWi-Fiで設定された設定を入力してください



確かに、Wi-Fiはターネドオンです



ネットワークの選択とパスワード入力

## グーグルアカウント

あなたはGoogleのプレイストアアプリケーションを参照してください最初の時間は、Googleアカウントを作成するプロンプトが表示されます。既にGmail Mアカウントがある場合。あなたは、Gmailのアドレスとパスワードを使用してログインするオプションがあります。GMiAccountがない場合は、アカウントを作成するプロンプトに従ってください

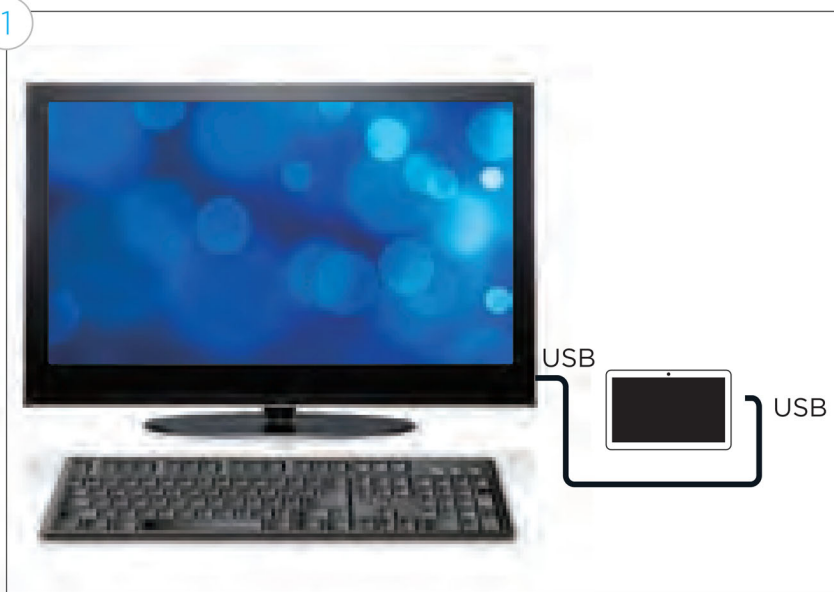
セットアップの終わりには、Googleの財布とクレジットカードを入力するように求められます。あなたが購入するときに、この手順をスキップして後で情報を入力することができます

## その他のアカウントの追加

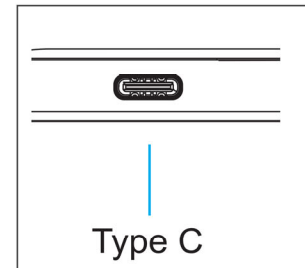
また、他のソーシャルネットワーキングとインストールされているアプリをメッセージングからアカウントを追加することができます。設定とtapaccountに移動

# コンピュータに接続する

1

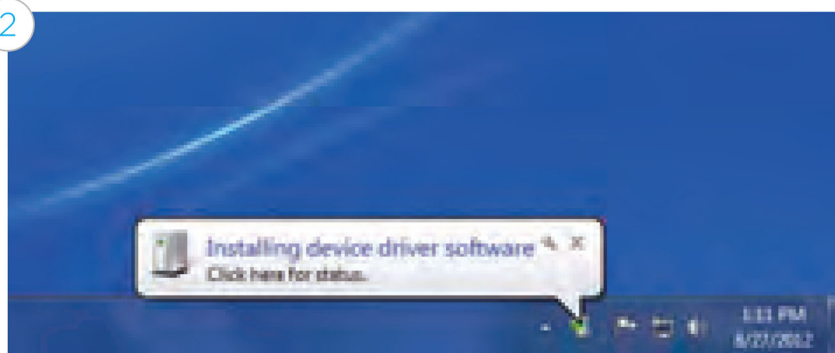


タイプCでコンピュータに接続してください



## Windows™

2



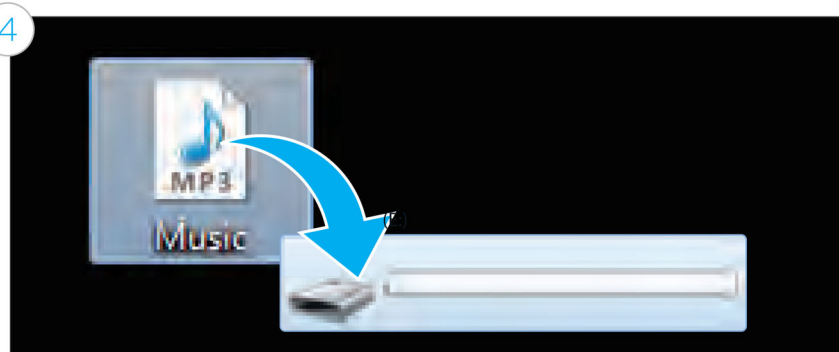
デバイスドライバ

3



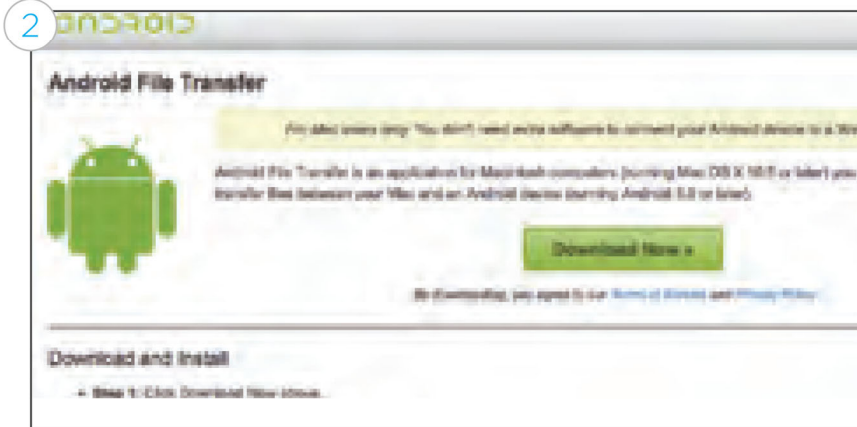
ファイルを表示するには

4



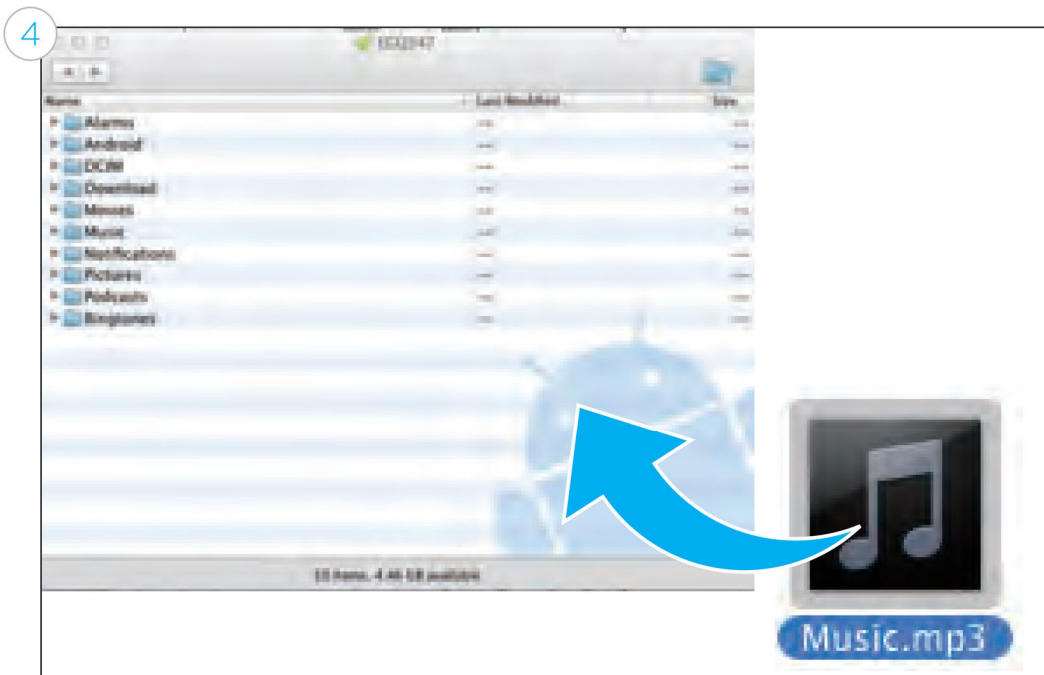
これで、AUSBフラッシュドライブを使用すると、タブレットからのファイルをドラッグアンドドロップすることができます

## Mac®



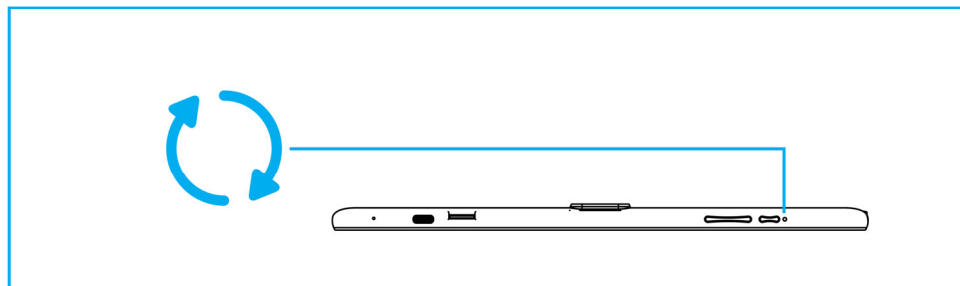
Mac用のAndroidファイル転送アプリケーションをインストールします。  
アンドロイド.今すぐダウンロードする

3 アプリケーションのインストール



あなたのタブレットを接続するとき、Androidファイル転送アプリケーションは自動的に起動します。ドラッグドロップのファイルを転送する

## リセット/復元



リセットクリップボタンなどのsmalObjectでリセットボタンを押してデバイスを

## 仕様

<b>OS</b>	Android™ 11
<b>Screen</b>	10.1" HD1280*800
<b>CPU</b>	RK3326S
<b>RAM</b>	2GB
<b>ROM</b>	64GB
<b>WiFi</b>	802.11b/g/n 2.4G Wifi
<b>Camera</b>	Front 2.0MP+ Back 8.0MP with flash light
<b>Battery</b>	6000mAh
<b>Video</b>	1080P

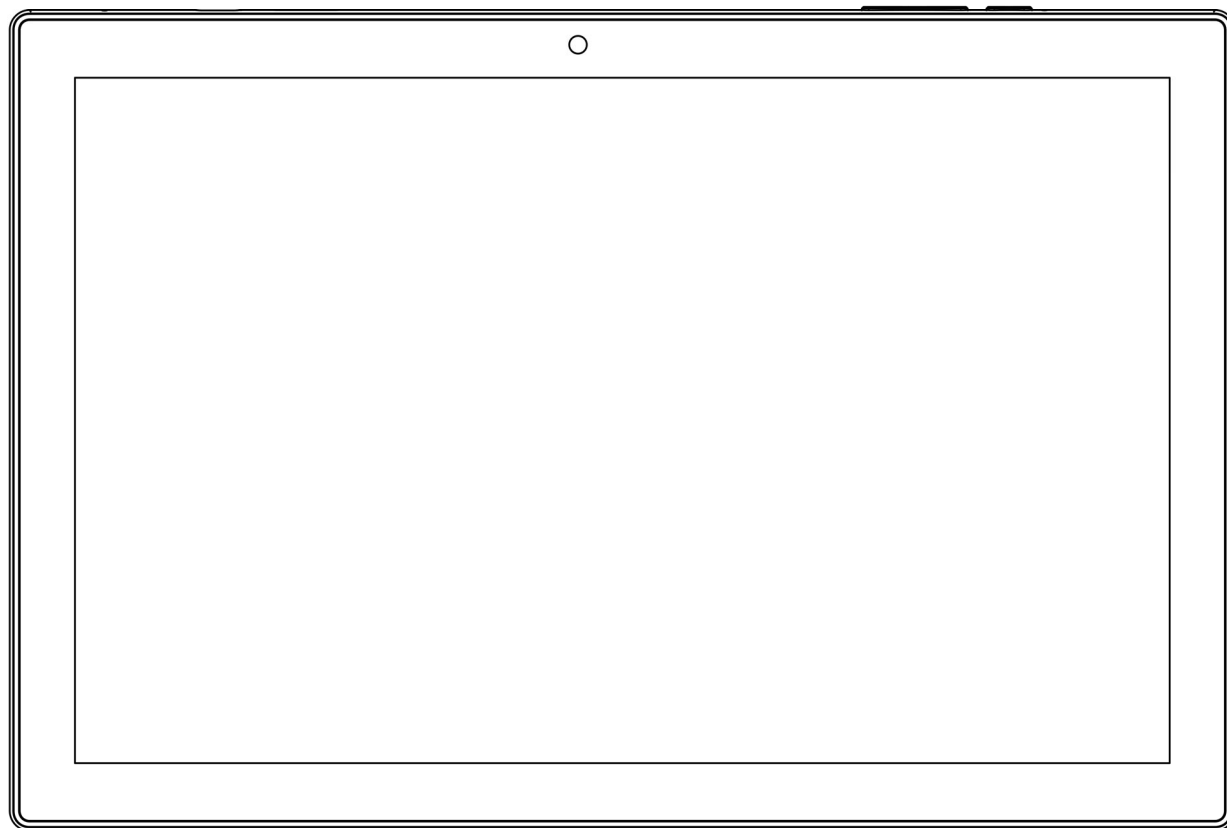
Google, Android, Google Play and other marks are trademarks of Google LLC.  
The Android robot is reproduced or modified from work created and shared by Google and used according to terms described in the Creative Commons 3.0 Attribution License.

Window is a registered trademark of Microsoft Corp. in the United States and other countries;  
Mac® and Finder® are registered trademark of Apple inc. Wi-Fi is a registered trademarks of the Wi-Fi Alliance.  
SCIENTIA is not affiliate with Microsoft, Apple, Inc., Google, Inc.,(including Android). The SCIENTIA brand and products are owned SCIENTIA.

# User Manual

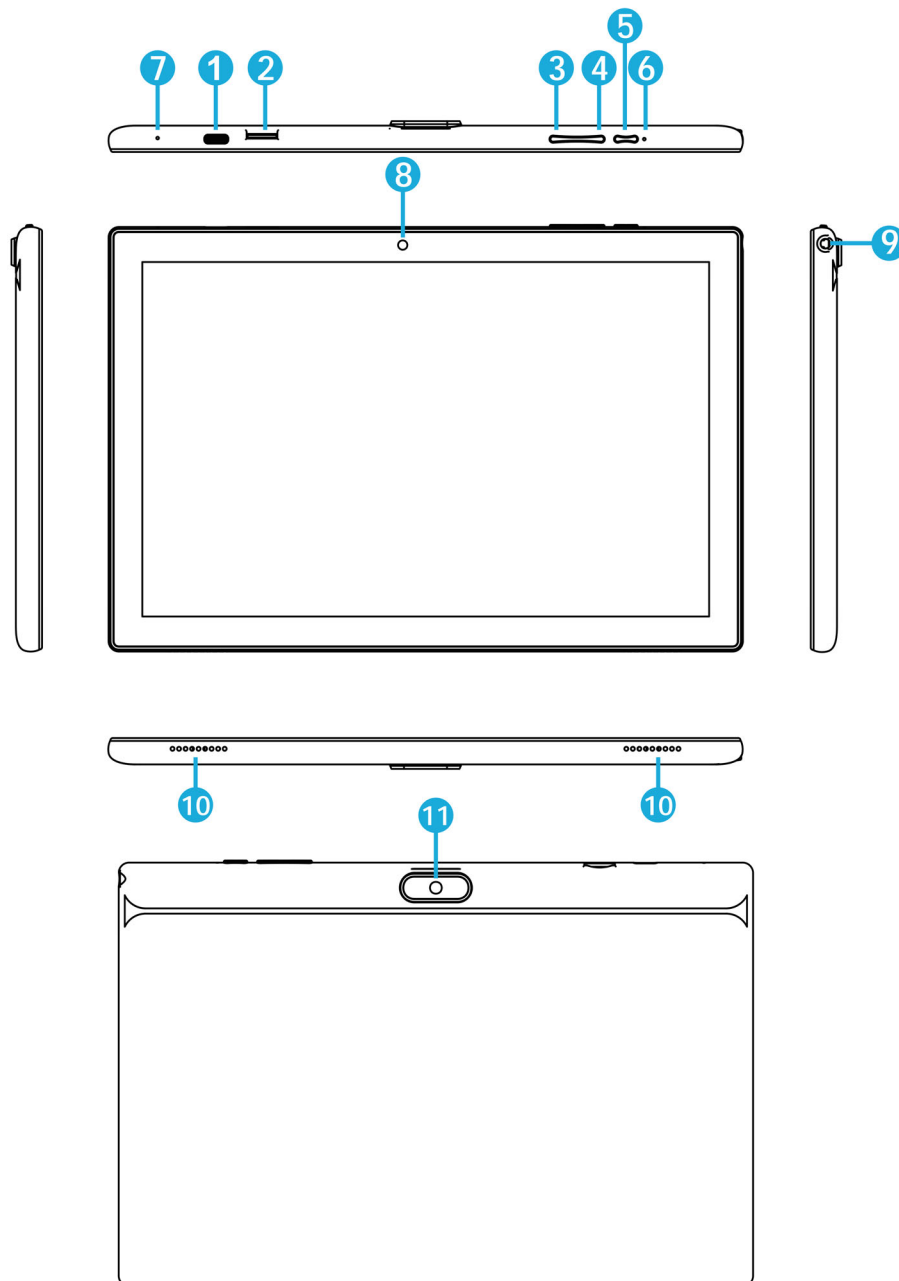
10.1inch Tablet PC

YQ10S





# Product overview



1. Type-C Port

2. Memory Card Slot

3. Volume -

4. Volume +

5. Power On/Off

6. Reset

7. Microphone

8. Front-facing Camera

9. Headphone Jack

10. Two Speakers

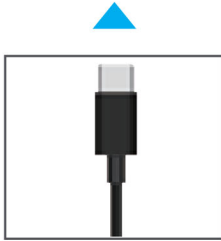
11. Back Camera

## Charging

Fully charge your tablet for 6 hours before the first use.



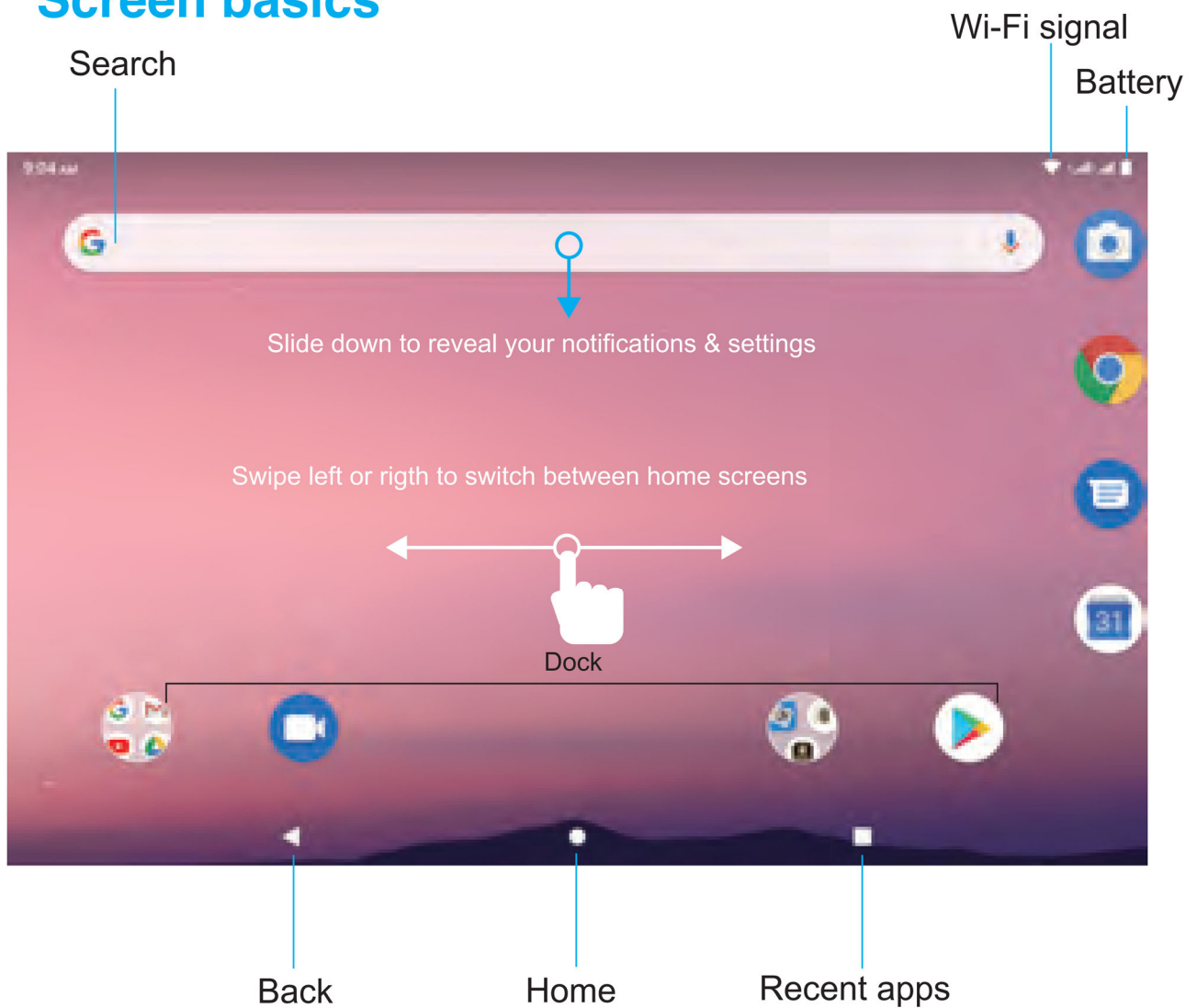
Use the included wall charger.



The battery indicator will show that your device is charging.

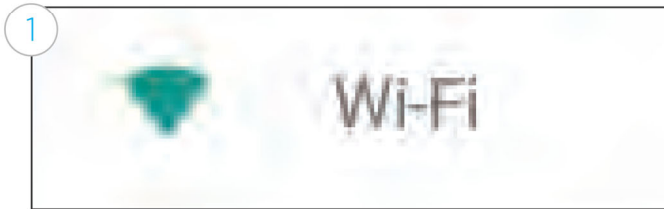


## Screen basics

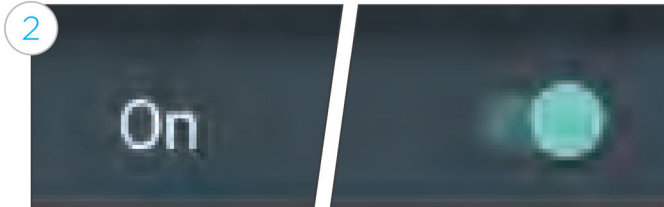


Hold Home and slide up to access Google™ Now

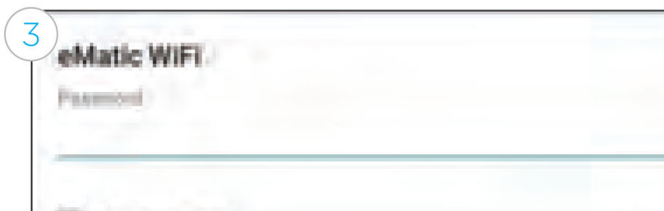
## Connecting to Wi-Fi <sup>®</sup>



Enter the settings app located in the apps menu, tap Wi-Fi.



Be sure Wi-Fi is turned on.



Choose your network and enter your password .

## Google account

The first time you see the Google play store app you will be prompted to create a Google account. If you already have a Gmail™ account. You have the option to sign in using your Gmail address and password. If you do not have a Gmail account, follow the prompts to create an account.

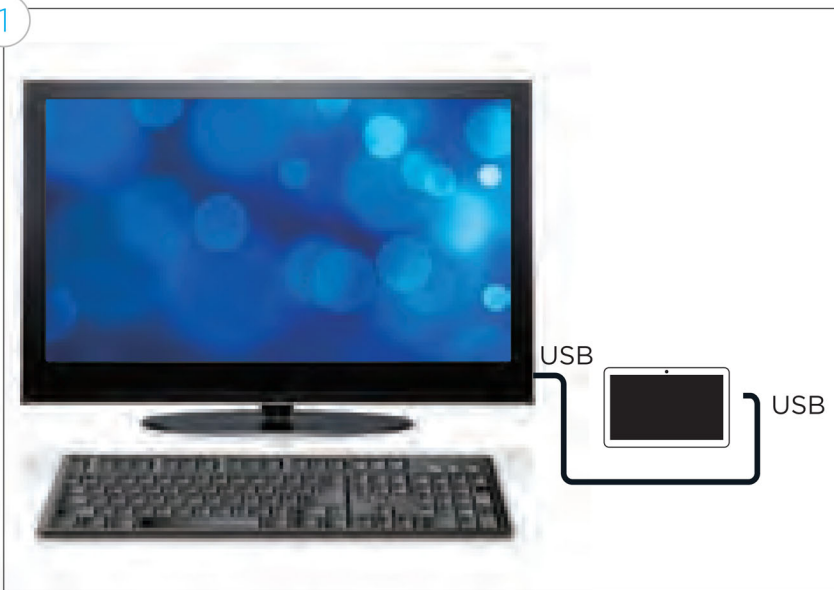
At the end of the setup, you will be asked to enter a credit card with Google wallet. You can skip this step for now and enter your information later when you make a purchase.

## Adding Other Accounts

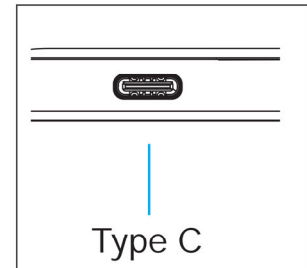
You can also add accounts from other social networking and messaging apps you have installed. Go to settings and tap accounts.

# Connecting to a computer

1

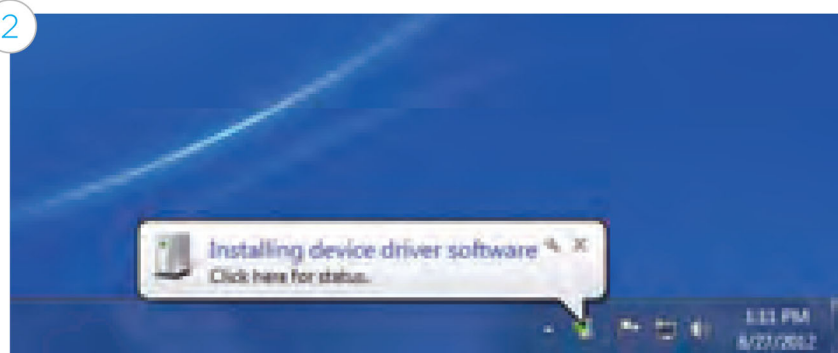


Connect to your computer by Type C



## Windows™

2



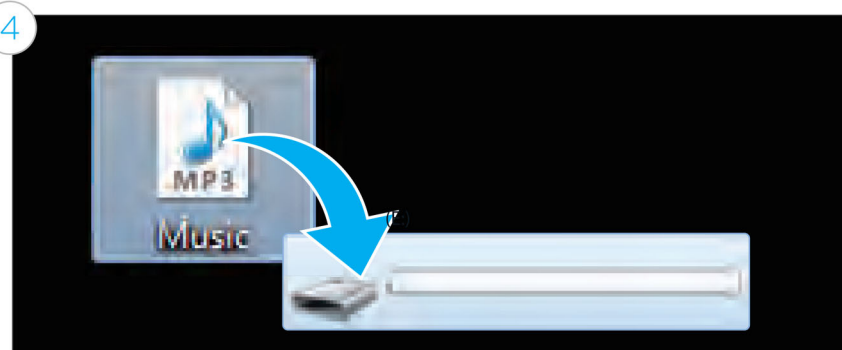
The device driver will install

3



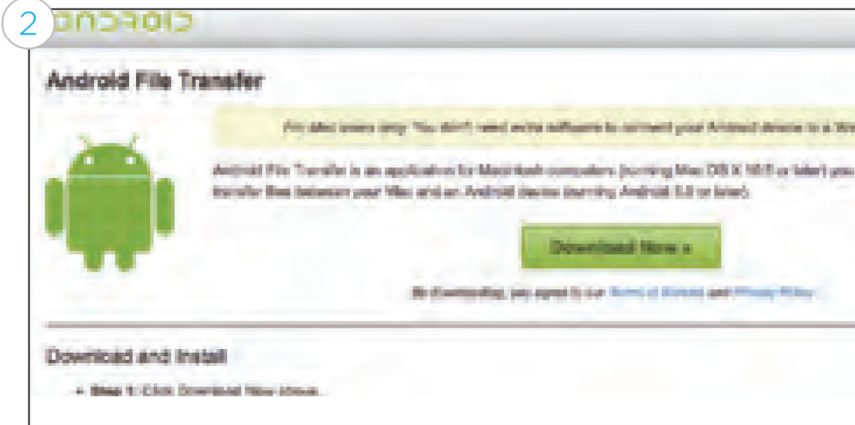
Choose open folder to view files or to select the removable disk

4



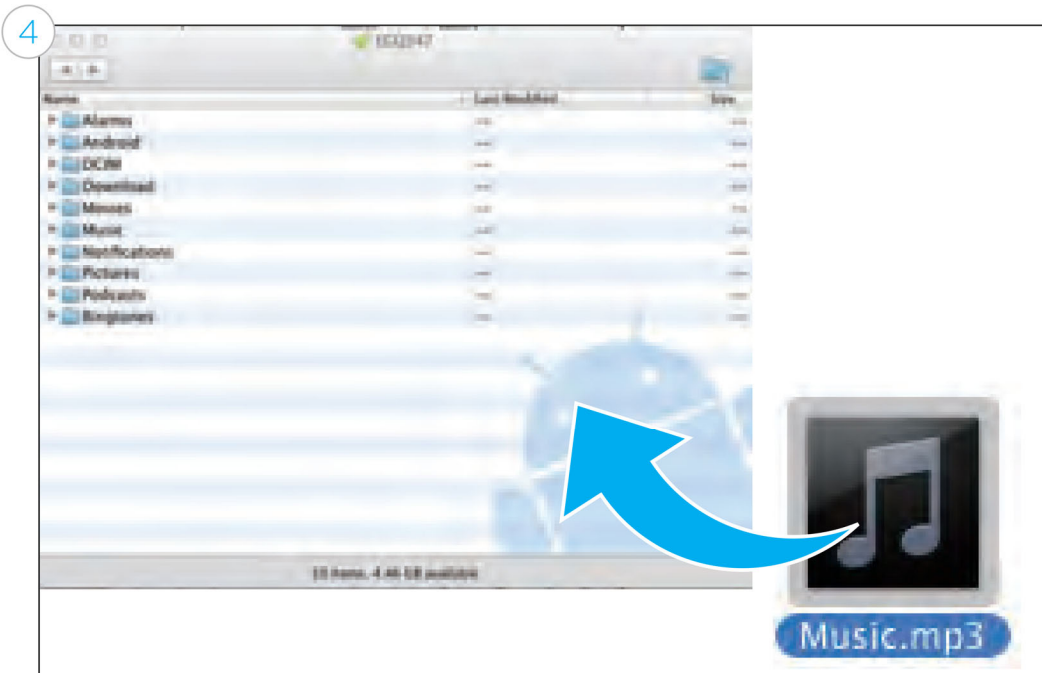
You will now be able to drag and drop files from your computer onto your tablet just as you would with a USB flash drive

Mac®



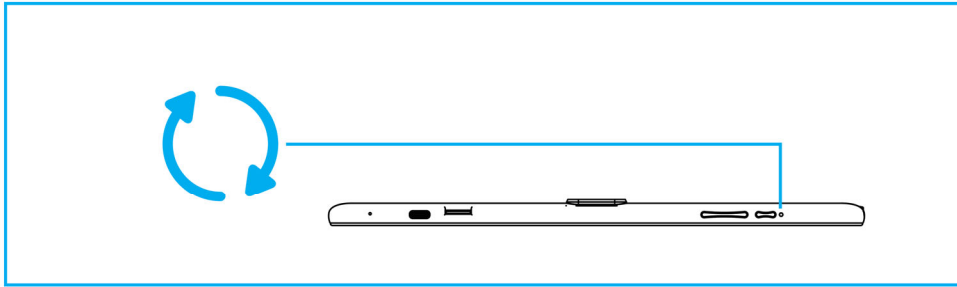
First install the android file transfer application for Mac. Go to [android.com/filetransfer](http://android.com/filetransfer) and choose download now.

3 Install the application



The Android™ file transfer application will launch automatically when you connect your tablet. Drag & Drop files to transfer.

## Reset/Restore



Reset Device by pressing the reset button with a small object, such as a paperclip.

## SPECIFICATION

◆ <b>OS</b>	Android™ 11
◆ <b>Screen</b>	10.1" HD1280*800
◆ <b>CPU</b>	RK3326S
◆ <b>RAM</b>	2GB
◆ <b>ROM</b>	64GB
◆ <b>WiFi</b>	802.11b/g/n 2.4G Wifi
◆ <b>Camera</b>	Front 2.0MP+ Back 8.0MP with flash light
◆ <b>Battery</b>	6000mAh
◆ <b>Video</b>	1080P

Google, Android, Google Play and other marks are trademarks of Google LLC.  
The Android robot is reproduced or modified from work created and shared by Google and used according to terms described in the Creative Commons 3.0 Attribution License.

Window is a registered trademark of Microsoft Corp. in the United States and other countries;  
Mac® and Finder® are registered trademark of Apple inc. Wi-Fi is a registered trademarks of the Wi-Fi Alliance.  
SCIENTIA is not affiliate with Microsoft, Apple, Inc., Google, Inc.,(including Android). The SCIENTIA brand and products are owned SCIENTIA.

## **FCC Statement**

This device complies with part 15 of the FCC rules. Operation is subject to the following two conditions: (1) this device may not cause harmful interference, and (2) this device must accept any interference received, including interference that may cause undesired operation.

Changes or modifications not expressly approved by the party responsible for compliance could void the user's authority to operate the equipment.

NOTE: This equipment has been tested and found to comply with the limits for a Class B digital device, pursuant to part 15 of the FCC Rules. These limits are designed to provide reasonable protection against harmful interference in a residential installation. This equipment generates uses and can radiate radio frequency energy and, if not installed and used in accordance with the instructions, may cause harmful interference to radio communications. However, there is no guarantee that interference will not occur in a particular installation. If this equipment does cause harmful interference to radio or television reception, which can be determined by turning the equipment off and on, the user is encouraged to try to correct the interference by one or more of the following measures:

- Reorient or relocate the receiving antenna.
- Increase the separation between the equipment and receiver.
- Connect the equipment into an outlet on a circuit different from that to which the receiver is connected.
- Consult the dealer or an experienced radio/TV technician for help.

The device has been evaluated to meet general RF exposure requirement. The device can be used in portable exposure condition without restriction.