

深圳市千目通讯科技有限公司

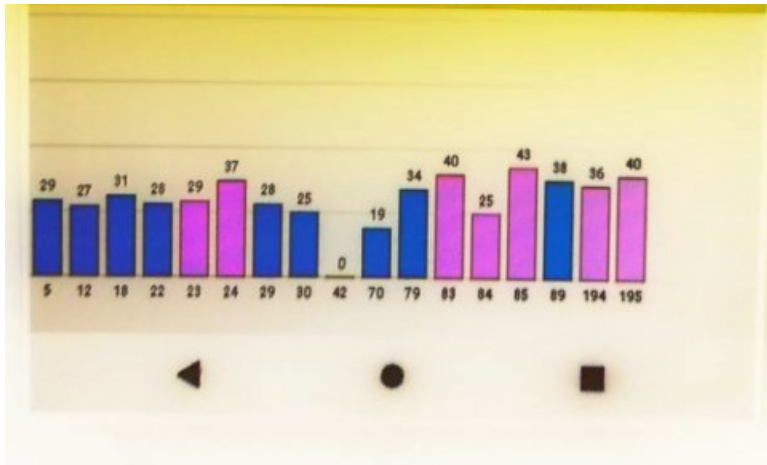
Shenzhen Qianmu Communication Technology Co.,Ltd.

Antenna acknowledgement

Applicable model	CP70K-4T-GWB		
client	Shenzhen peicheng technology co., ltd		
Specification description			
	Product content	specifications	Customer material code
Specification description	Three-in-one antenna	FPC black/character QM-CP70K-4T-W/G/B-V1.0	CP70KG004
Change resume			
serial number	date	version	Brief description of changes
one	2023-08-14	V1.0	New project
2			
three			

Supplier sample confirmation					
research and development	structure	check	decide		
			PASS FAIL		
Customer sample confirmation					
electron	structure	project	purchase	quality	check
Reasons for rejection or other precautions:					

1. Actual test of GPS/WIFI



GPS antenna measurement

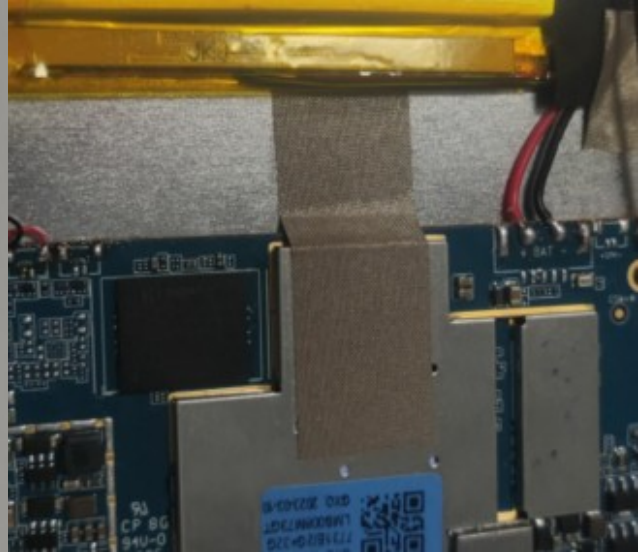


WiFi antenna measurement.

2. Environmental treatment and antenna placement instructions



Camera cable is shielded by conductive cloth



The main board is grounded with conductive cloth and screen.

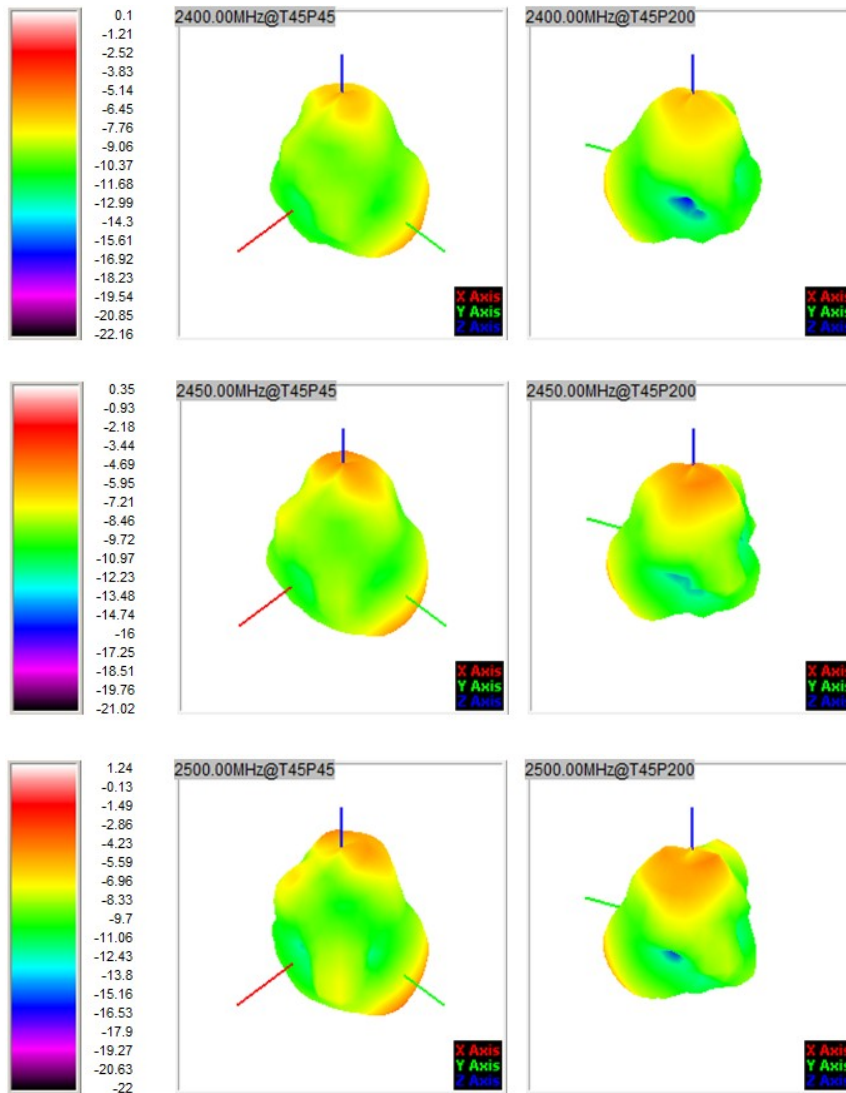


Three-in-one antenna

3、 Efficiency, gain and pattern of WIFI antenna

FETUKEJI

Frequency ID	1	2	3	4	5	6	7	8	9	10	11
Frequency (MHz)	2400.0	2410.0	2420.0	2430.0	2440.0	2450.0	2460.0	2470.0	2480.0	2490.0	2500.0
Point Values											
Ant. Port Input Pwr. (dBm)	0.00	0.00	0.00	0.00	0.00	0.00	0.00	0.00	0.00	0.00	0.00
Tot. Rad. Pwr. (dBm)	-6.36	-6.40	-6.33	-6.11	-6.07	-5.78	-5.83	-5.99	-5.91	-5.70	-5.64
Peak EIRP (dBm)	0.10	-0.12	-0.33	-0.16	0.05	0.35	0.31	0.33	0.59	0.99	1.24
Directivity (dBi)	6.47	6.28	5.99	5.96	6.12	6.10	6.15	6.32	6.50	6.69	6.88
Efficiency (dB)	-6.36	-6.40	-6.33	-6.11	-6.07	-5.78	-5.83	-5.99	-5.91	-5.70	-5.64
Efficiency (%)	23.10	22.90	23.30	24.50	24.70	26.50	26.10	25.20	25.70	26.90	27.30
Gain (dBi)	0.10	-0.12	-0.33	-0.16	0.05	0.35	0.31	0.33	0.59	0.99	1.24
NHPRP $\pm\pi/4$ (dBm)	-8.24	-8.30	-8.26	-8.08	-8.09	-7.82	-7.88	-8.02	-7.90	-7.66	-7.58
NHPRP $\pm\pi/6$ (dBm)	-9.73	-9.82	-9.79	-9.63	-9.66	-9.40	-9.47	-9.62	-9.52	-9.28	-9.21
NHPRP $\pm\pi/8$ (dBm)	-10.88	-10.99	-10.99	-10.83	-10.87	-10.62	-10.71	-10.87	-10.79	-10.56	-10.50
Upper Hem. PRP (dBm)	-9.30	-9.28	-9.21	-9.05	-9.06	-8.83	-8.94	-9.12	-9.04	-8.87	-8.83
Lower Hem. PRP (dBm)	-9.45	-9.55	-9.46	-9.20	-9.11	-8.74	-8.75	-8.89	-8.79	-8.55	-8.48
Upper Hem. PRP (%)	11.74	11.80	11.99	12.45	12.42	13.08	12.77	12.24	12.47	12.99	13.10
Lower Hem. PRP (%)	11.36	11.10	11.31	12.02	12.28	13.38	13.33	12.92	13.20	13.96	14.20



4、 structural drawings

